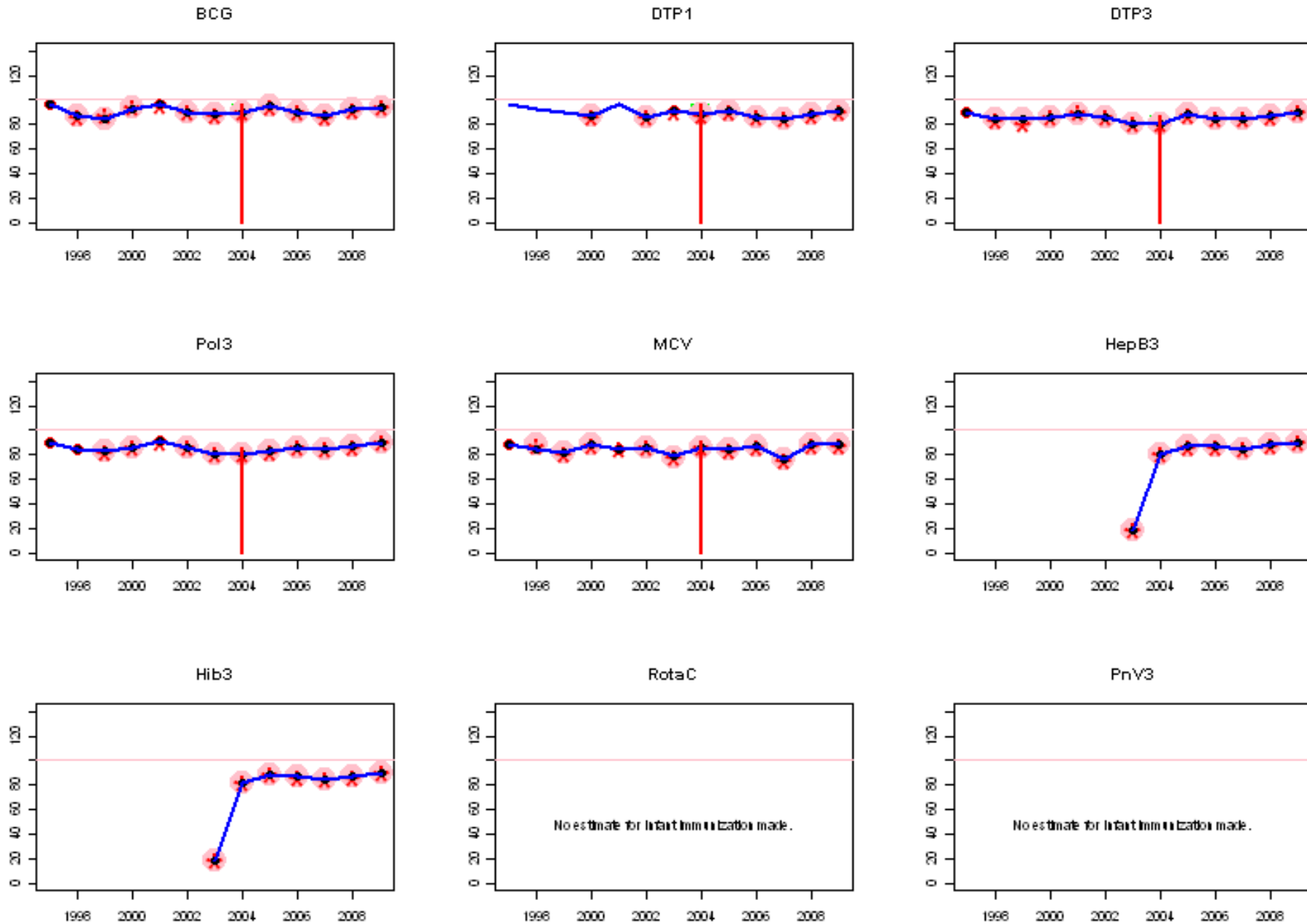
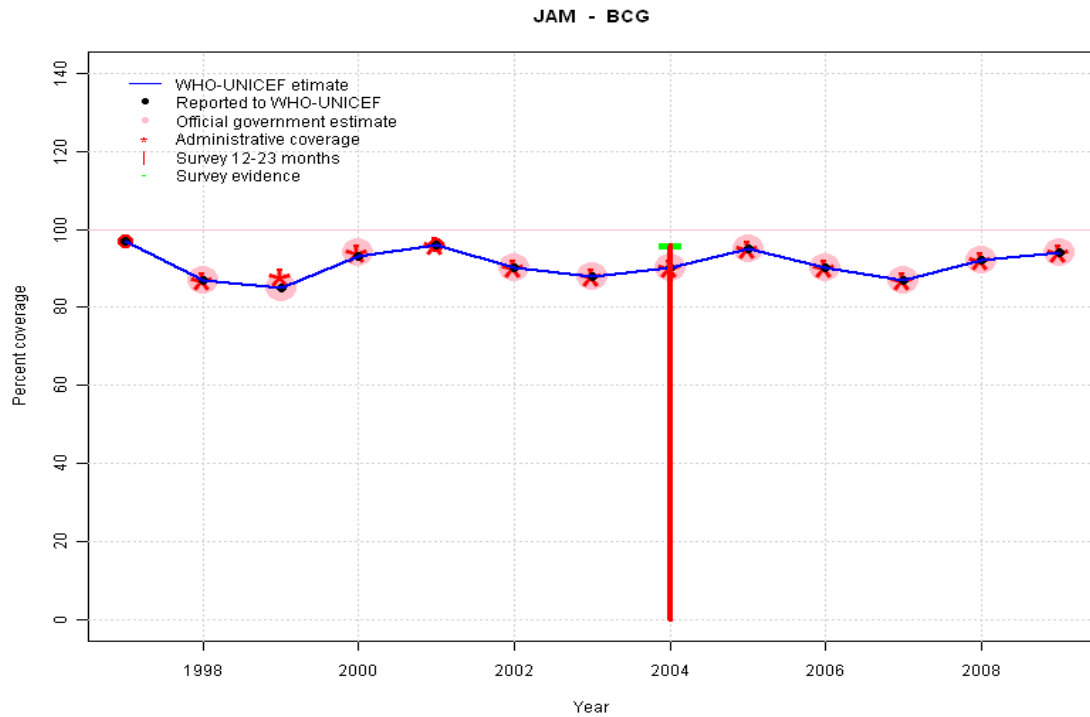


Jamaica: WHO and UNICEF estimates of immunization coverage, 1997 - 2009



Jamaica - BCG

Description:



1997: Legacy estimate.
 1998: Estimate based on reported data.
 1999: Estimate based on reported data.
 2000: Estimate based on reported data.
 2001: Estimate based on reported data.
 2002: Estimate based on reported data.
 2003: Estimate based on reported data.
 2004: Estimate based on reported data (90 percent) confirmed by survey (96 percent).
 2005: Estimate based on reported data.
 2006: Estimate based on reported data.
 2007: Estimate based on reported data.
 2008: Estimate based on reported data.
 2009: Estimate based on reported data.

	1997	1998	1999	2000	2001	2002	2003	2004	2005	2006	2007	2008	2009
Estimate	97	87	85	93	96	90	88	90	95	90	87	92	94
Reported	97	87	85	93	96	90	88	90	95	90	87	92	94
Official	NA	87	85	94	NA	90	88	90	95	90	87	92	94
Administrative	NA	87	88	94	96	90	88	90	95	90	87	92	94
Survey	NA	NA	NA	NA	NA	NA	NA	96	NA	NA	NA	NA	NA

Jamaica - DTP1

Description:

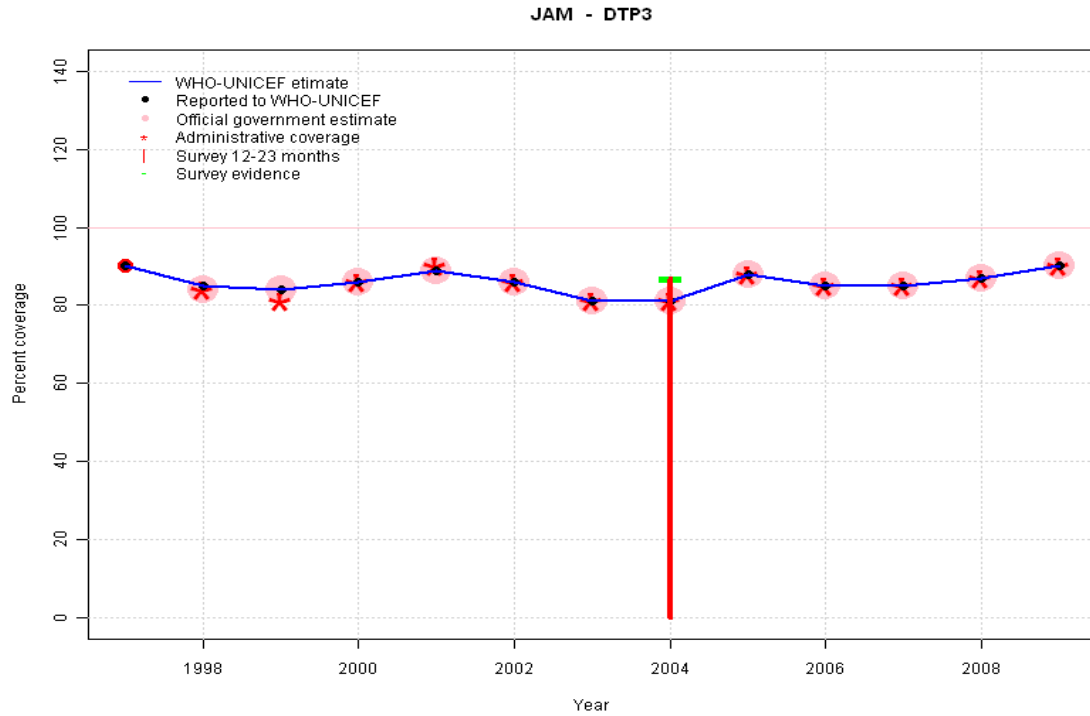


- 1997: Legacy estimate.
- 1998: Estimate interpolated between 1997 and 2000 estimates.
- 1999: Estimate interpolated between 1997 and 2000 estimates.
- 2000: Estimate based on reported data.
- 2001: Estimated DTP3 greater than estimated DTP1; DTP1 estimate based on the relationship between DTP1 and DTP3 from 282 surveys.
- 2002: Estimate based on reported data.
- 2003: Estimate based on reported data.
- 2004: Estimate based on reported data (88 percent) confirmed by survey (96 percent).
- 2005: Estimate based on reported data.
- 2006: Estimate based on reported data.
- 2007: Estimate based on reported data.
- 2008: Estimate based on reported data.
- 2009: Estimate based on reported data.

	1997	1998	1999	2000	2001	2002	2003	2004	2005	2006	2007	2008	2009
Estimate	96	93	90	87	96	86	91	88	91	86	85	88	91
Reported	NA	NA	NA	87	NA	86	91	88	91	86	85	88	91
Official	NA	NA	NA	87	NA	86	NA	88	91	86	85	88	91
Administrative	NA	NA	NA	87	NA	86	91	88	91	86	85	88	91
Survey	NA	NA	NA	NA	NA	NA	NA	96	NA	NA	NA	NA	NA

Jamaica - DTP3

Description:

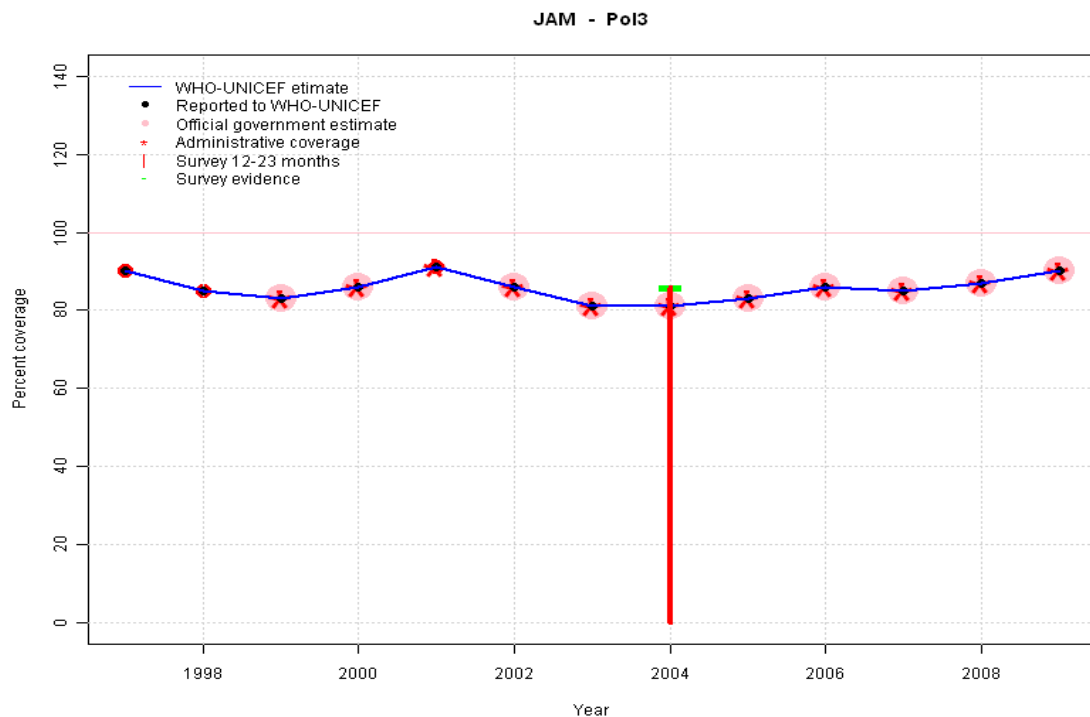


- 1997: Legacy estimate.
- 1998: Estimate based on reported data.
- 1999: Estimate based on reported data.
- 2000: Estimate based on reported data.
- 2001: Estimate based on reported data.
- 2002: Estimate based on reported data.
- 2003: Estimate based on reported data.
- 2004: Estimate based on reported data (81 percent) confirmed by survey (87 percent).
- 2005: Estimate based on reported data.
- 2006: Estimate based on reported data.
- 2007: Estimate based on reported data.
- 2008: Estimate based on reported data.
- 2009: Estimate based on reported data.

	1997	1998	1999	2000	2001	2002	2003	2004	2005	2006	2007	2008	2009
Estimate	90	85	84	86	89	86	81	81	88	85	85	87	90
Reported	90	85	84	86	89	86	81	81	88	85	85	87	90
Official	NA	84	84	86	89	86	81	81	88	85	85	87	90
Administrative	NA	84	81	86	90	86	81	81	88	85	85	87	90
Survey	NA	NA	NA	NA	NA	NA	NA	87	NA	NA	NA	NA	NA

Jamaica - Pol3

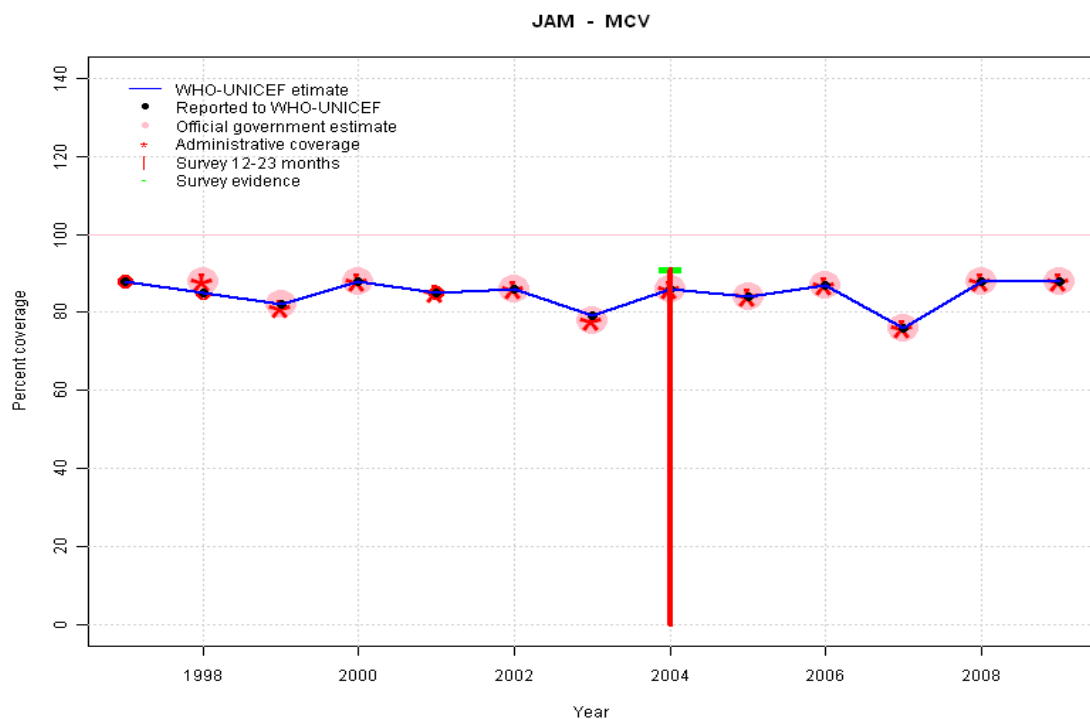
Description:



1997: Legacy estimate.
 1998: Estimate based on reported data.
 1999: Estimate based on reported data.
 2000: Estimate based on reported data.
 2001: Estimate based on reported data.
 2002: Estimate based on reported data.
 2003: Estimate based on reported data.
 2004: Estimate based on reported data (81 percent) confirmed by survey (86 percent).
 2005: Estimate based on reported data.
 2006: Estimate based on reported data.
 2007: Estimate based on reported data.
 2008: Estimate based on reported data.
 2009: Estimate based on reported data.

	1997	1998	1999	2000	2001	2002	2003	2004	2005	2006	2007	2008	2009
Estimate	90	85	83	86	91	86	81	81	83	86	85	87	90
Reported	90	85	83	86	91	86	81	81	83	86	85	87	90
Official	NA	NA	83	86	NA	86	81	81	83	86	85	87	90
Administrative	NA	NA	83	86	91	86	81	81	83	86	85	87	90
Survey	NA	NA	NA	NA	NA	NA	NA	86	NA	NA	NA	NA	NA

Jamaica - MCV



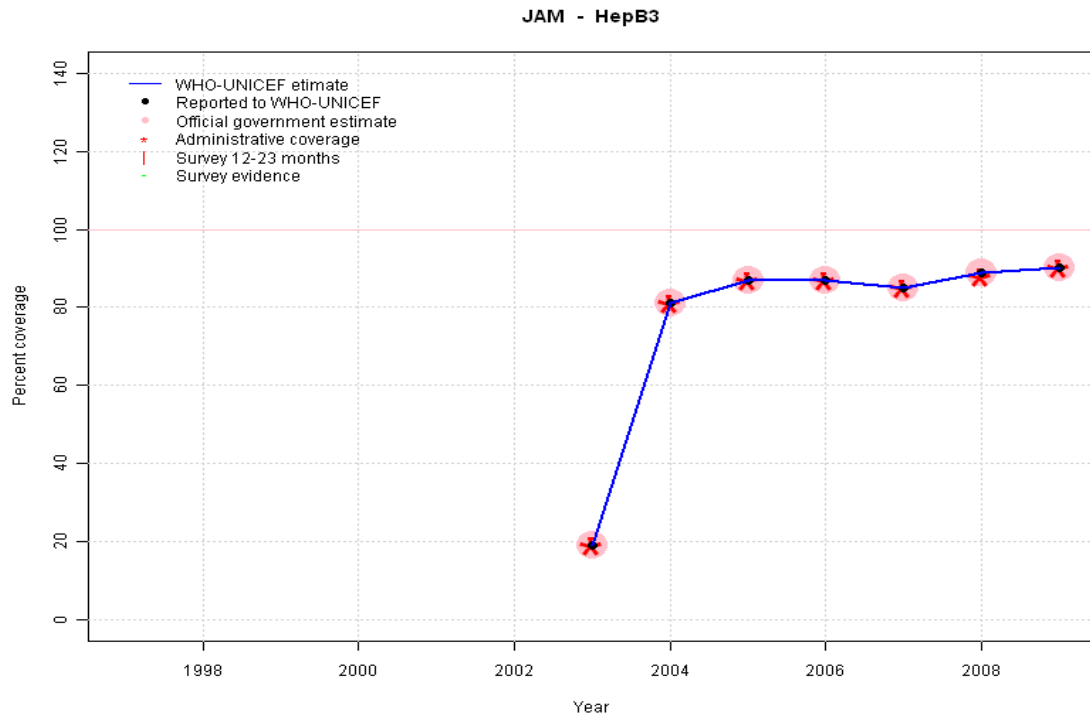
Description:

- 1997: Legacy estimate.
- 1998: Estimate based on reported data.
- 1999: Estimate based on reported data.
- 2000: Estimate based on reported data.
- 2001: Estimate based on reported data.
- 2002: Estimate based on reported data.
- 2003: Estimate based on reported data.
- 2004: Estimate based on reported data (86 percent) confirmed by survey (91 percent).
- 2005: Estimate based on reported data.
- 2006: Estimate based on reported data.
- 2007: Estimate based on reported data. Interruption in routine services because of hurricane Dean
- 2008: Estimate based on reported data.
- 2009: Estimate based on reported data.

	1997	1998	1999	2000	2001	2002	2003	2004	2005	2006	2007	2008	2009
Estimate	88	85	82	88	85	86	79	86	84	87	76	88	88
Reported	88	85	82	88	85	86	79	86	84	87	76	88	88
Official	NA	88	82	88	NA	86	78	86	84	87	76	88	88
Administrative	NA	88	81	88	85	86	78	86	84	87	76	88	88
Survey	NA	NA	NA	NA	NA	NA	NA	91	NA	NA	NA	NA	NA

Jamaica - HepB3

Description:



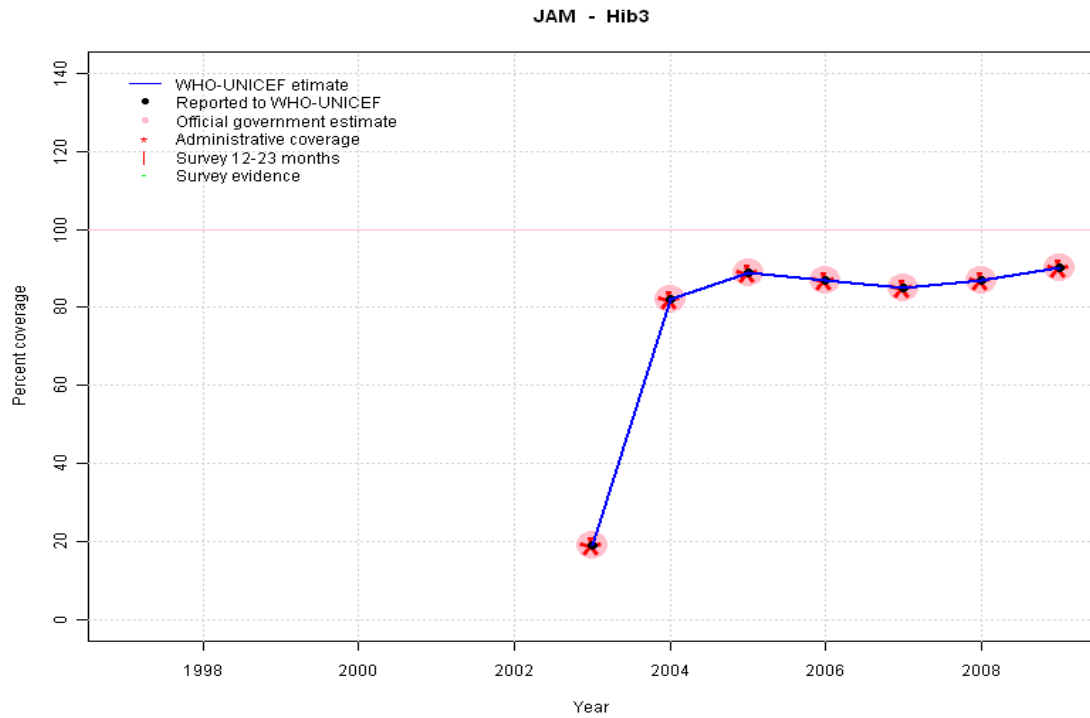
2003: Estimate based on reported data. HepB introduced in 2003.
 2004: Estimate based on reported data.
 2005: Estimate based on reported data.
 2006: Estimate based on reported data.
 2007: Estimate based on reported data.
 2008: Estimate based on reported data.
 2009: Estimate based on reported data.

	1997	1998	1999	2000	2001	2002	2003	2004	2005	2006	2007	2008	2009
Estimate	NA	NA	NA	NA	NA	NA	19	81	87	87	85	89	90
Reported	NA	NA	NA	NA	NA	NA	19	81	87	87	85	89	90
Official	NA	NA	NA	NA	NA	NA	19	81	87	87	85	89	90
Administrative	NA	NA	NA	NA	NA	NA	19	81	87	87	85	88	90
Survey	NA	NA	NA	NA	NA	NA	NA	NA	NA	NA	NA	NA	NA

Jamaica - Hib3

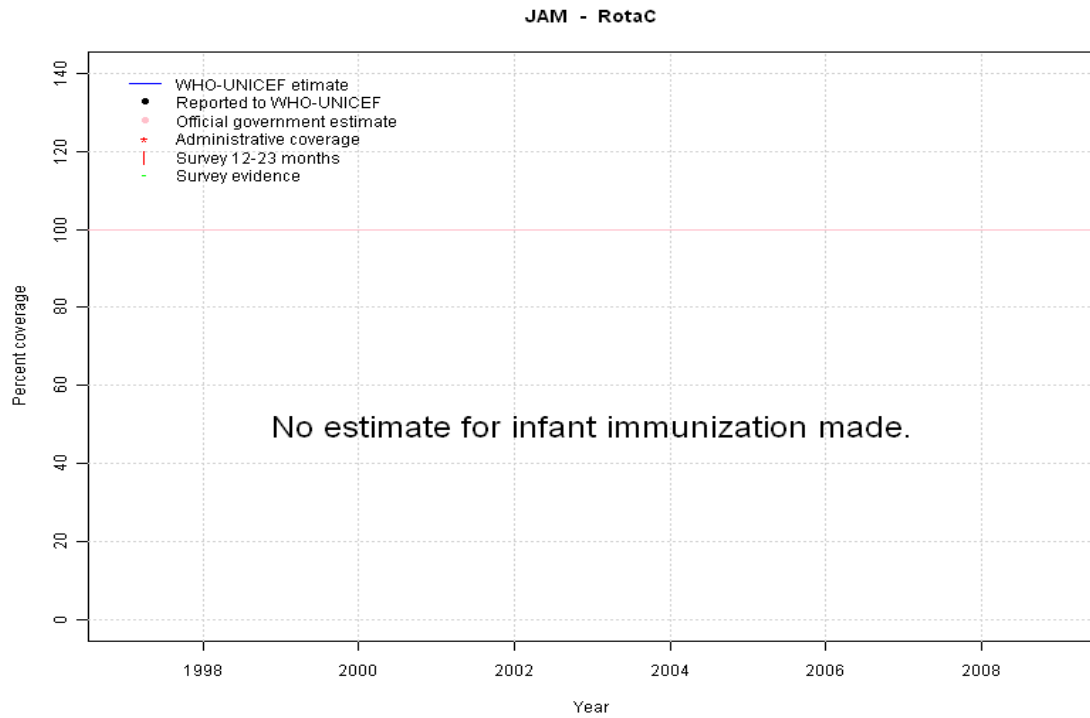
Description:

2003: Estimate based on reported data. Hib introduced in 2003
 2004: Estimate based on reported data.
 2005: Estimate based on reported data.
 2006: Estimate based on reported data.
 2007: Estimate based on reported data.
 2008: Estimate based on reported data.
 2009: Estimate based on reported data.



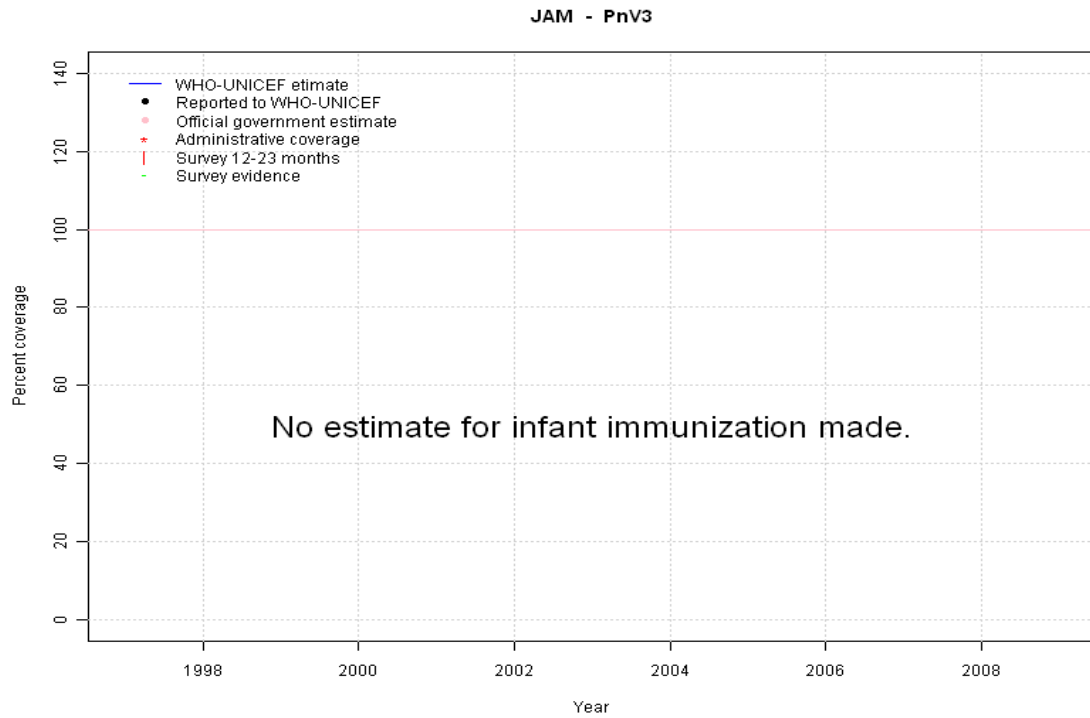
	1997	1998	1999	2000	2001	2002	2003	2004	2005	2006	2007	2008	2009
Estimate	NA	NA	NA	NA	NA	NA	19	82	89	87	85	87	90
Reported	NA	NA	NA	NA	NA	NA	19	82	89	87	85	87	90
Official	NA	NA	NA	NA	NA	NA	19	82	89	87	85	87	90
Administrative	NA	NA	NA	NA	NA	NA	19	82	89	87	85	87	90
Survey	NA	NA	NA	NA	NA	NA	NA	NA	NA	NA	NA	NA	NA

Jamaica - RotaC



	1997	1998	1999	2000	2001	2002	2003	2004	2005	2006	2007	2008	2009
Estimate	NA	NA	NA	NA	NA	NA	NA	NA	NA	NA	NA	NA	NA
Reported	NA	NA	NA	NA	NA	NA	NA	NA	NA	NA	NA	NA	NA
Official	NA	NA	NA	NA	NA	NA	NA	NA	NA	NA	NA	NA	NA
Administrative	NA	NA	NA	NA	NA	NA	NA	NA	NA	NA	NA	NA	NA
Survey	NA	NA	NA	NA	NA	NA	NA	NA	NA	NA	NA	NA	NA

Jamaica - PnV3



	1997	1998	1999	2000	2001	2002	2003	2004	2005	2006	2007	2008	2009
Estimate	NA	NA	NA	NA	NA	NA	NA	NA	NA	NA	NA	NA	NA
Reported	NA	NA	NA	NA	NA	NA	NA	NA	NA	NA	NA	NA	NA
Official	NA	NA	NA	NA	NA	NA	NA	NA	NA	NA	NA	NA	NA
Administrative	NA	NA	NA	NA	NA	NA	NA	NA	NA	NA	NA	NA	NA
Survey	NA	NA	NA	NA	NA	NA	NA	NA	NA	NA	NA	NA	NA

Jamaica - survey details

2004 Jamaica Multiple Indicator Cluster Survey 2005

Vaccine	Confirmation method	Coverage	Age cohort	Sample	Cards seen
BCG	Card	74	18-29 m	298	74
BCG	Card or History	96	18-29 m	298	74
BCG	History	22	18-29 m	298	74
BCG	C or H <12 months	94	18-29 m	298	74
DTP1	C or H <12 months	91	18-29 m	298	74
DTP1	Card	74	18-29 m	298	74
DTP1	Card or History	96	18-29 m	298	74
DTP1	History	22	18-29 m	298	74
DTP3	C or H <12 months	82	18-29 m	298	74
DTP3	Card	73	18-29 m	298	74
DTP3	Card or History	87	18-29 m	298	74
DTP3	History	14	18-29 m	298	74
MCV	History	21	18-29 m	298	74
MCV	C or H <12 months	87	18-29 m	298	74
MCV	Card or History	91	18-29 m	298	74
MCV	Card	70	18-29 m	298	74
Pol1	C or H <12 months	96	18-29 m	298	74

Pol1	Card	74	18-29 m	298	74
Pol1	Card or History	96	18-29 m	298	74
Pol1	History	22	18-29 m	298	74
Pol3	C or H <12 months	80	18-29 m	298	74
Pol3	Card	73	18-29 m	298	74
Pol3	Card or History	86	18-29 m	298	74
Pol3	History	13	18-29 m	298	74

2004 Survey of Childhood Vaccine Coverage in the Parishes of Jamaica

Vaccine	Confirmation method	Coverage	Age cohort	Sample	Cards seen
BCG	C or H <12 months	99	12-23 m	3744	100
DTP3	C or H <12 months	98	12-23 m	3744	100
HepB3	C or H <12 months	98	12-23 m	3744	100
Hib3	C or H <12 months	98	12-23 m	3744	100
MCV	C or H <12 months	94	12-23 m	3744	100
Pol3	C or H <12 months	97	12-23 m	3744	100

Further information and estimates for 1980-1996 are available at:

http://www.childinfo.org/immunization_countryreports.html

http://www.who.int/immunization_monitoring/routine/immunization_coverage/en/index4.html

Jamaica

WHO/UNICEF Estimates of Protection at Birth (PAB) against tetanus

In countries where tetanus is recommended for girls and women coverage is usually reported as "TT2+", i.e. the proportion of (pregnant) women who have received their second or superior TT dose in a given year. TT2 + coverage, however, can under-represent the actual proportion of births that are protected against tetanus as it does not include women who have previously received protective doses, women who received one dose without documentation of previous doses, and women who received doses in TT (or Td) supplemental immunization activities (SIA). In addition, girls who have received DTP in their childhood and are entering childbearing age, may be protected with TT booster doses.

WHO and UNICEF have developed a model that takes into account the above scenarios, and calculates the proportion of births in a given year that can be considered as having been protected against tetanus - "Protection at Birth".

In this model, annual cohorts of women are followed from infancy through their life. A proportion receive DTP in infancy (estimated based on the WHO-UNICEF estimates of DTP3 coverage). In addition some of these women also receive TT through routine services when they are pregnant and may also receive TT during SIAs. The model also adjusts reported data, taking into account coverage patterns in other years, and/or results available through surveys. The duration of protection is then calculated, based on WHO estimates of the duration of protection by doses ever received. The proportion of births that are protected against tetanus as a result of maternal immunization reflects the tetanus immunization received by the mother throughout her life rather than simply the TT immunizations received during the current pregnancy.

Year	PAB coverage estimate (%)
1997	
1998	
1999	
2000	51
2001	72
2002	71
2003	52
2004	59
2005	51
2006	53
2007	54
2008	58
2009	62

¹ This model is described in: Griffiths U., Wolfson L., Quddus A., Younus M., Hafiz R.. Incremental cost-effectiveness of supplementary immunization activities to prevent neo-natal tetanus in Pakistan. Bulletin of the World Health Organization 2004; 82:643-651.