



**WHO / UNICEF**

**Joint Monitoring Programme  
for Water Supply and Sanitation**

Estimates for the use of

**Improved  
Drinking-Water Sources**

Updated March 2010

---

**Jamaica**

---



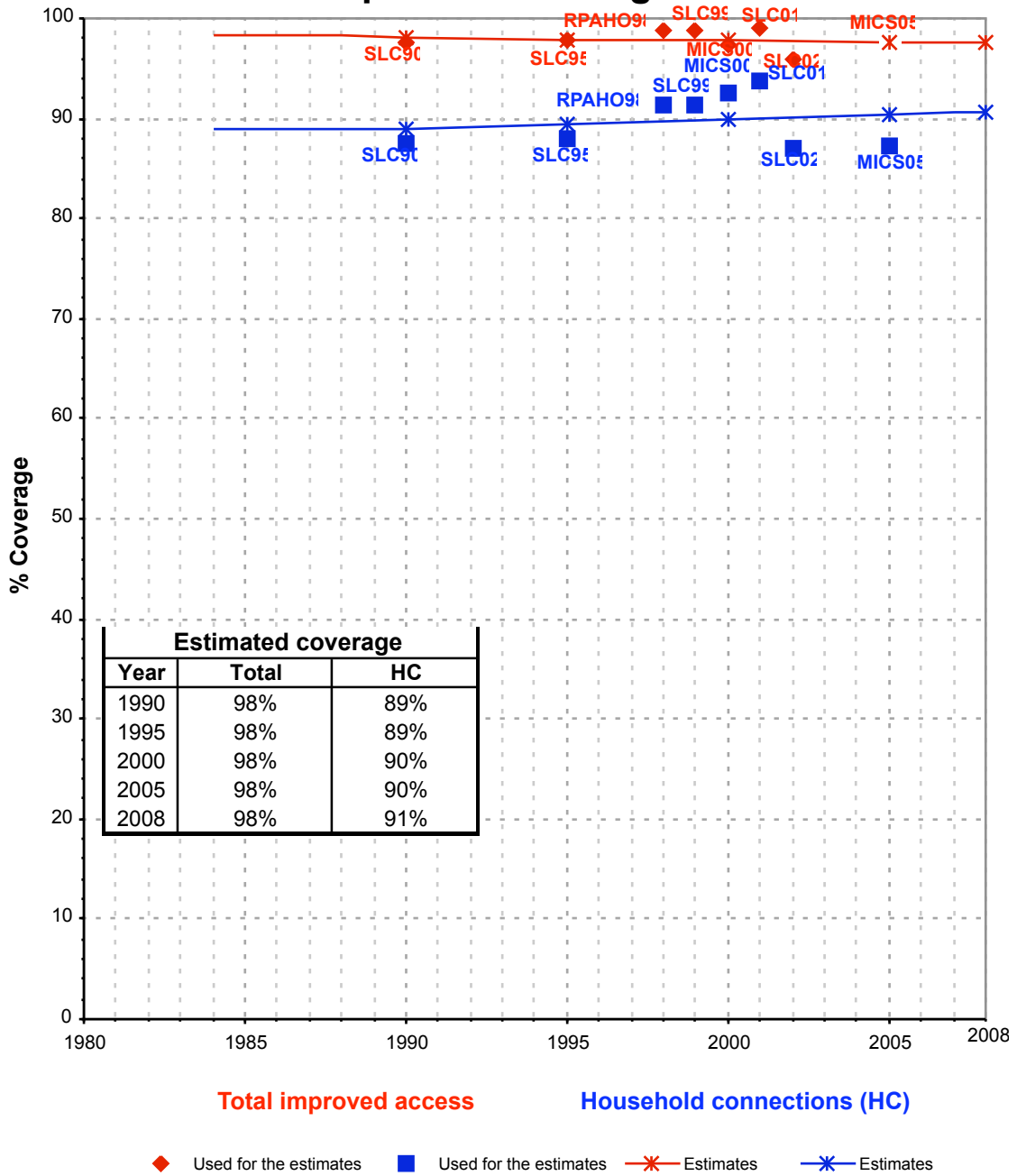






Jamaica			DRINKING WATER							
			URBAN				RURAL			
			House connection		Total		House connection		Total	
Source	Code	Year	Used	Not used	Used	Not used	Used	Not used	Used	Not used
Survey of Living Conditions	SLC90	1990	87.6		97.5		33.2		87.8	
Survey of Living Conditions	SLC95	1995	88.0		97.9		35.7		89.0	
PAHO	RPAHO98	1998	91.3		98.9		39.4		87.2	
Survey of Living Conditions	SLC99	1999	91.3		98.9		39.4		88.7	
Multiple Indicator Cluster Survey	MICS00	2000	92.4		97.3		46.0		82.8	
Survey of Living Conditions	SLC01	2001	93.6		98.9		44.8		93.2	
Survey of Living Conditions	SLC02	2002	87.1		95.9		40.3		88.4	
Multiple Indicator Cluster Survey	MICS05	2005	87.2		97.3		44.5		88.3	

# Jamaica - urban - Use of improved drinking water sources



# Jamaica - rural - Use of improved drinking water sources

