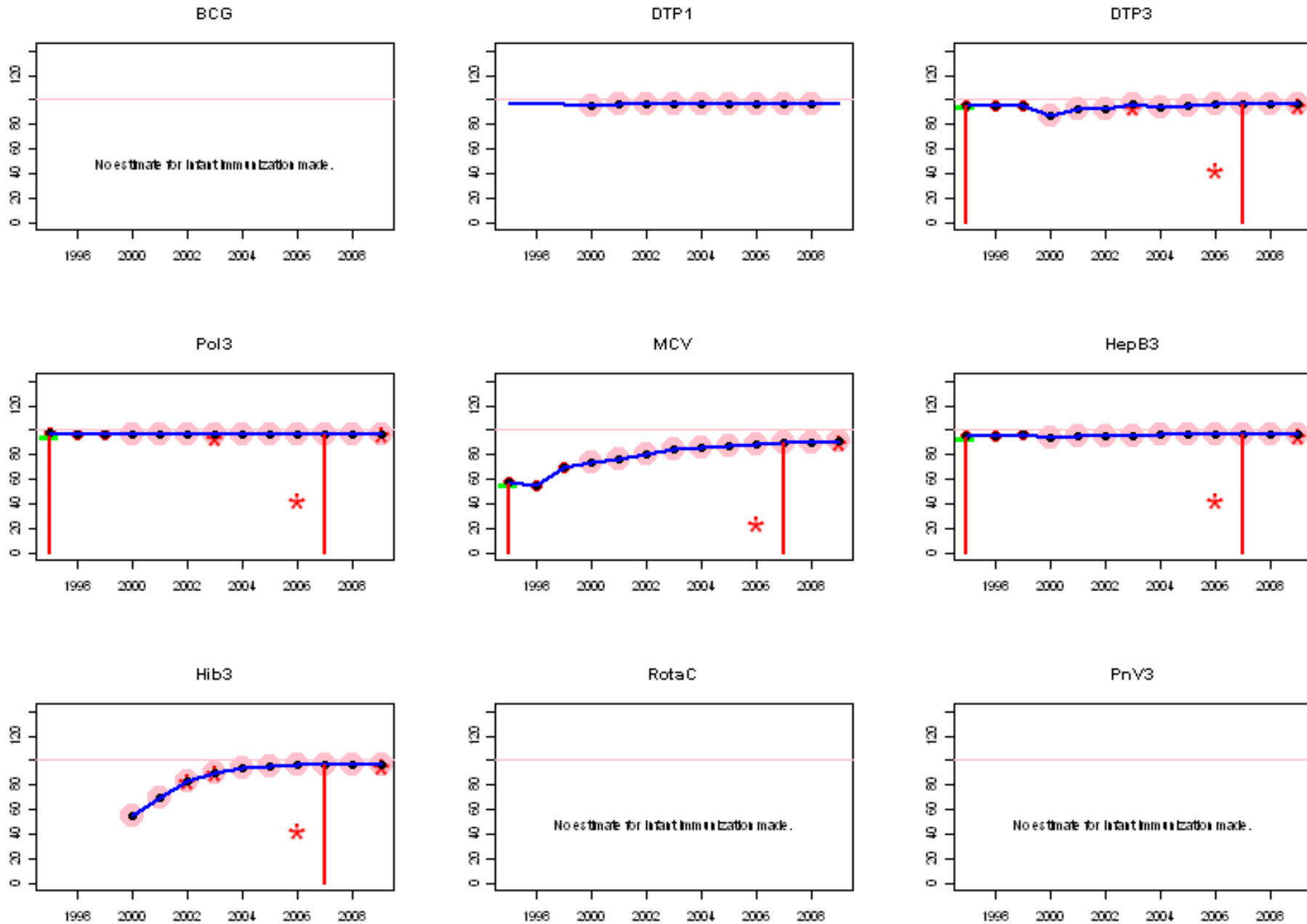
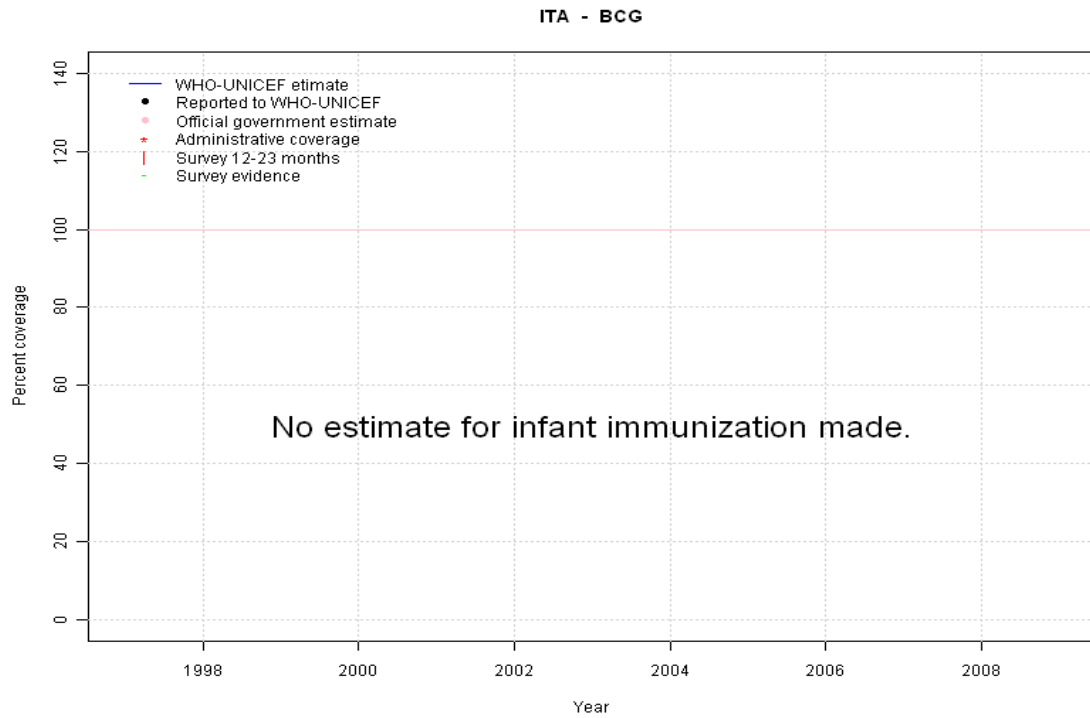


Italy: WHO and UNICEF estimates of immunization coverage, 1997 - 2009

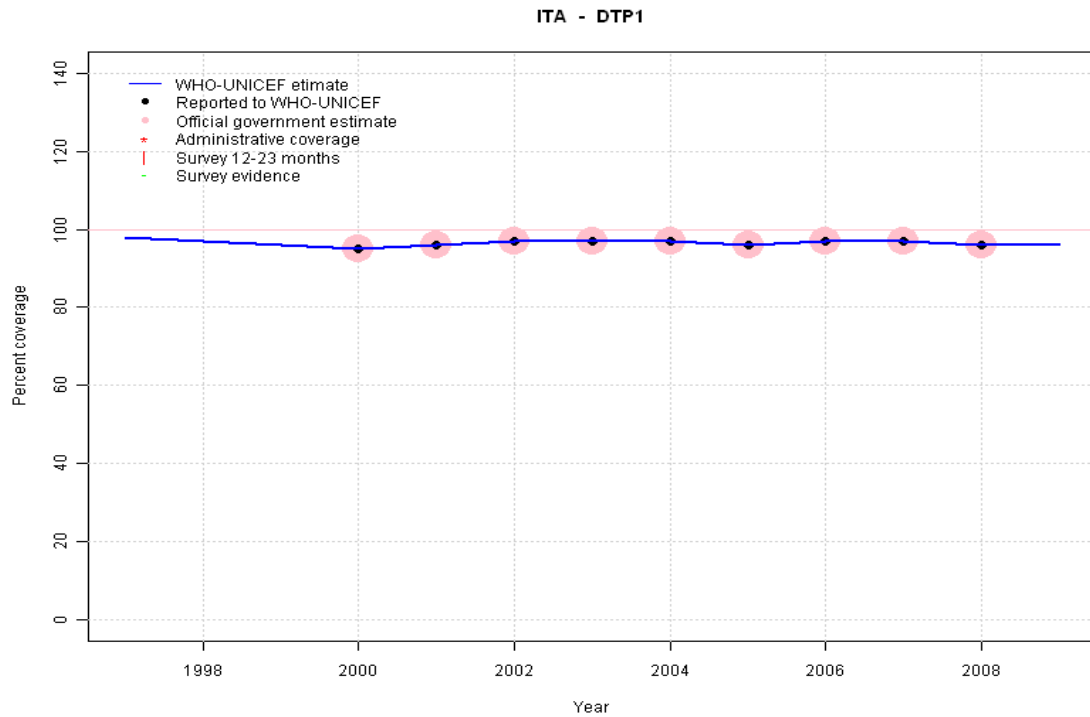


Italy - BCG



	1997	1998	1999	2000	2001	2002	2003	2004	2005	2006	2007	2008	2009
Estimate	NA	NA	NA	NA	NA	NA	NA	NA	NA	NA	NA	NA	NA
Reported	NA	NA	NA	NA	NA	NA	NA	NA	NA	NA	NA	NA	NA
Official	NA	NA	NA	NA	NA	NA	NA	NA	NA	NA	NA	NA	NA
Administrative	NA	NA	NA	NA	NA	NA	NA	NA	NA	NA	NA	NA	NA
Survey	NA	NA	NA	NA	NA	NA	NA	NA	NA	NA	NA	NA	NA

Italy - DTP1

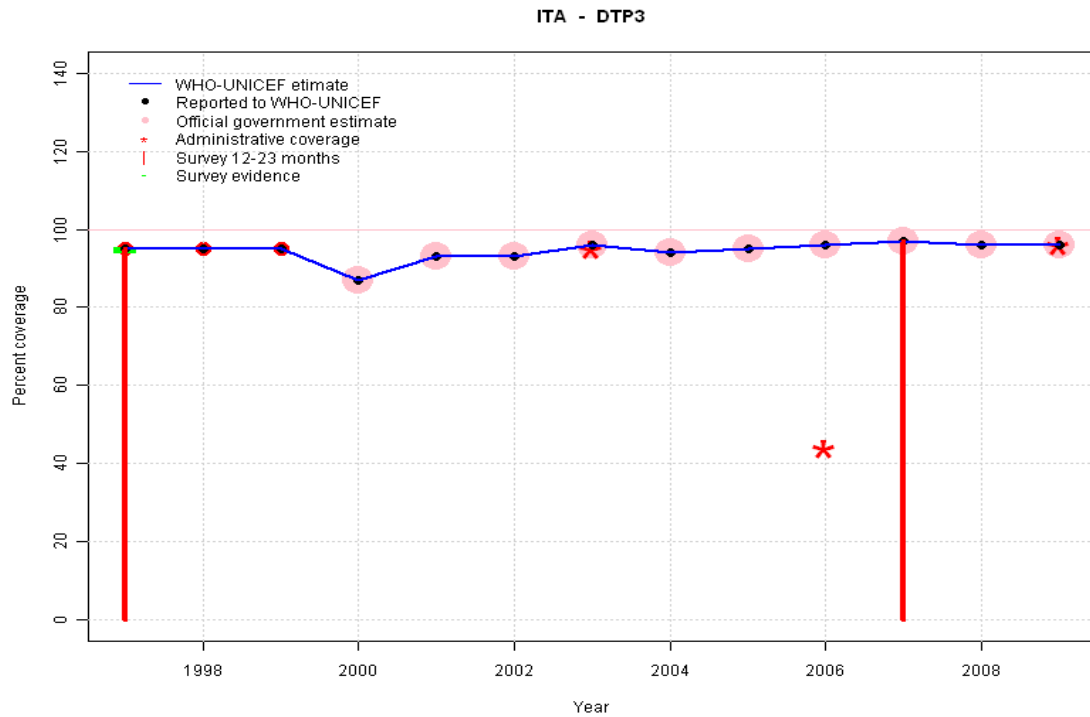


	1997	1998	1999	2000	2001	2002	2003	2004	2005	2006	2007	2008	2009
Estimate	98	97	96	95	96	97	97	97	96	97	97	96	96
Reported	NA	NA	NA	95	96	97	97	97	96	97	97	96	NA
Official	NA	NA	NA	95	96	97	97	97	96	97	97	96	NA
Administrative	NA	NA	NA	NA	NA	NA	NA	NA	NA	NA	NA	NA	NA
Survey	NA	NA	NA	NA	NA	NA	NA	NA	NA	NA	NA	NA	NA

Description:

- 1997: Legacy estimate. Estimate based on DTP coverage. Combination DT vaccine with no pertussis component is also offered.
- 1998: Estimate interpolated between 1997 and 2000 estimates. Estimate based on DTP coverage. Combination DT vaccine with no pertussis component is also offered.
- 1999: Estimate interpolated between 1997 and 2000 estimates. Estimate based on DTP coverage. Combination DT vaccine with no pertussis component is also offered.
- 2000: Estimate based on DTP coverage. Combination DT vaccine with no pertussis component is also offered.
- 2001: Estimate based on reported data. Estimate based on DTP coverage. Combination DT vaccine with no pertussis component is also offered.
- 2002: Estimate based on reported data. Estimate based on DTP coverage. Combination DT vaccine with no pertussis component is also offered.
- 2003: Estimate based on reported data. Estimate based on DTP coverage. Combination DT vaccine with no pertussis component is also offered.
- 2004: Estimate based on reported data. Estimate based on DTP coverage. Combination DT vaccine with no pertussis component is also offered.
- 2005: Estimate based on reported data. Estimate based on DTP coverage. Combination DT vaccine with no pertussis component is also offered.
- 2006: Estimate based on reported data. Estimate based on DTP coverage. Combination DT vaccine with no pertussis component is also offered.
- 2007: Estimate based on reported data. Estimate based on DTP coverage. Combination DT vaccine with no pertussis component is also offered.
- 2008: Estimate based on reported data. Estimate based on DTP coverage. Combination DT vaccine with no pertussis component is also offered. Administrative data is based on reports from 9 of 25 districts.
- 2009: Estimate based on trend in reported data. Missing or ignored reported value estimated by extrapolation from 2008 reported value of 96 percent. Estimate based on DTP coverage. Combination DT vaccine with no pertussis component is also offered.

Italy - DTP3



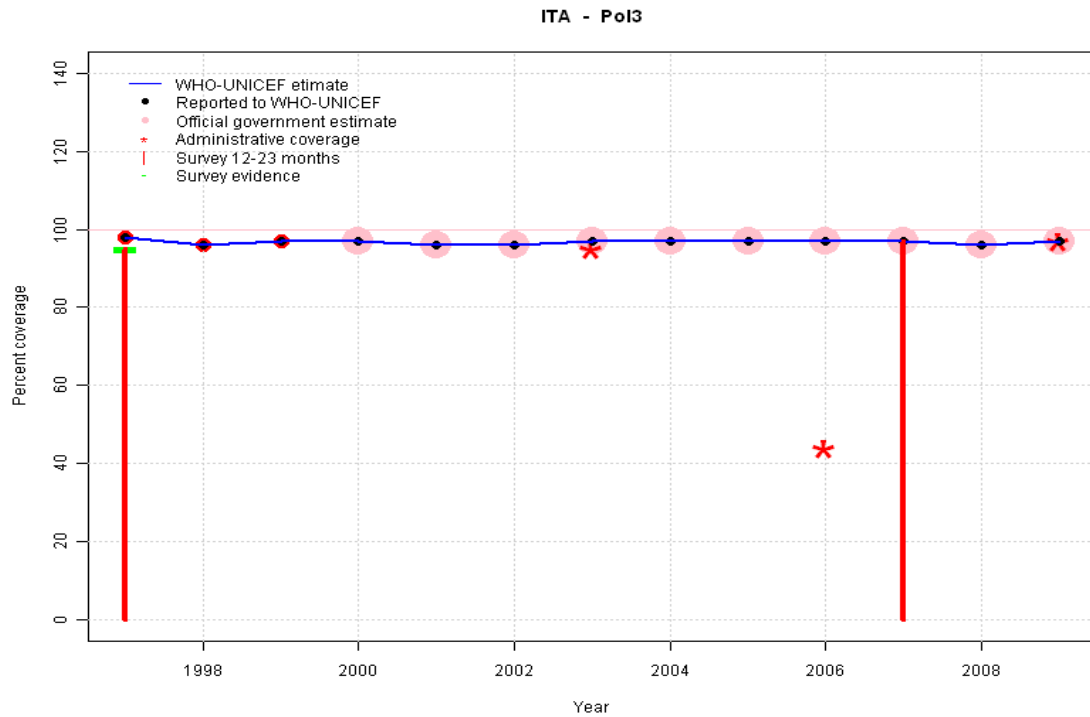
	1997	1998	1999	2000	2001	2002	2003	2004	2005	2006	2007	2008	2009
Estimate	95	95	95	87	93	93	96	94	95	96	97	96	96
Reported	95	95	95	87	93	93	96	94	95	96	97	96	96
Official	NA	NA	NA	87	93	93	96	94	95	96	97	96	96
Administrative	NA	NA	NA	NA	NA	NA	95	NA	NA	44	NA	NA	96
Survey	95	NA	NA	NA	NA	NA	NA	NA	NA	NA	97	NA	NA

Description:

- 1997: Legacy estimate. Estimate based on DTP coverage. Combination DT vaccine with no pertussis component is also offered.
- 1998: Estimate based on reported data. Estimate based on DTP coverage. Combination DT vaccine with no pertussis component is also offered.
- 1999: Estimate based on reported data. Estimate based on DTP coverage. Combination DT vaccine with no pertussis component is also offered.
- 2000: Estimate based on reported data. Estimate based on DTP coverage. Combination DT vaccine with no pertussis component is also offered.
- 2001: Estimate based on reported data. Estimate based on DTP coverage. Combination DT vaccine with no pertussis component is also offered.
- 2002: Estimate based on reported data. Estimate based on DTP coverage. Combination DT vaccine with no pertussis component is also offered.
- 2003: Estimate based on reported data. Estimate based on DTP coverage. Combination DT vaccine with no pertussis component is also offered.
- 2004: Estimate based on reported data. Estimate based on DTP coverage. Combination DT vaccine with no pertussis component is also offered.
- 2005: Estimate based on reported data. Estimate based on DTP coverage. Combination DT vaccine with no pertussis component is also offered.
- 2006: Estimate based on reported data. Estimate based on DTP coverage. Combination DT vaccine with no pertussis component is also offered.
- 2007: Estimate based on reported data (97 percent) confirmed by survey (97 percent). Estimate based on DTP coverage. Combination DT vaccine with no pertussis component is also offered.
- 2008: Estimate based on reported data. Estimate based on DTP coverage. Combination DT vaccine with no pertussis component is also offered. Administrative data is based on reports from 9 of 25 districts.
- 2009: Estimate based on reported data. Estimate based on DTP coverage. Combination DT vaccine with no pertussis component is also offered.

Italy - Pol3

Description:

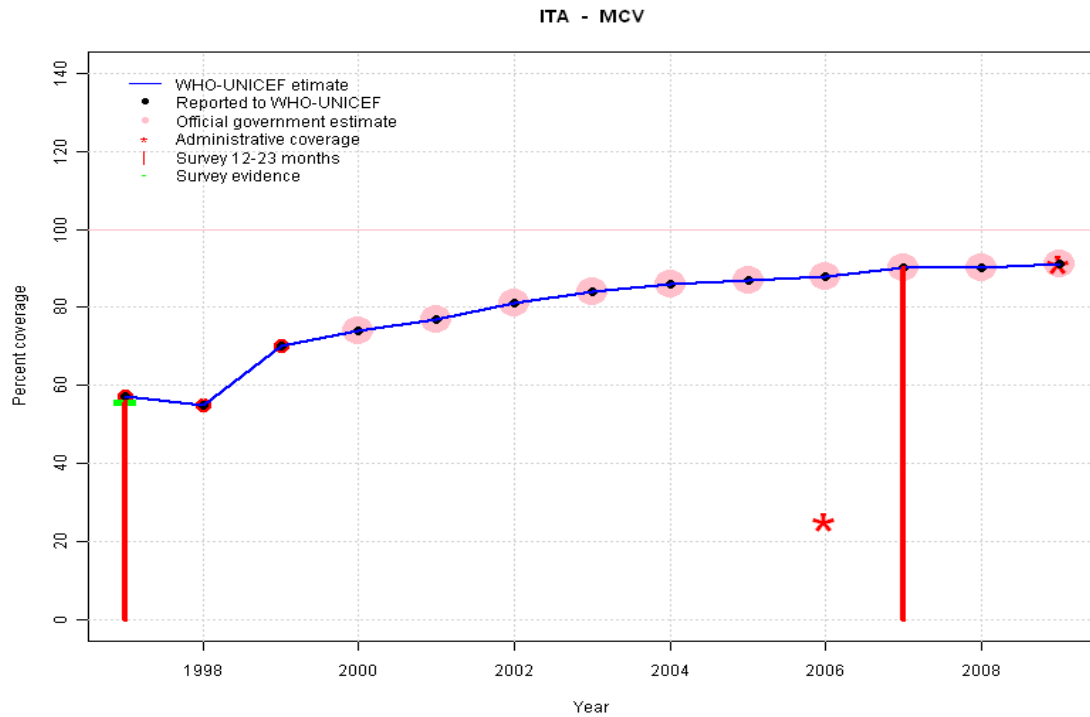


- 1997: Legacy estimate.
- 1998: Estimate based on reported data.
- 1999: Estimate based on reported data.
- 2000: Estimate based on reported data.
- 2001: Estimate based on reported data.
- 2002: Estimate based on reported data.
- 2003: Estimate based on reported data.
- 2004: Estimate based on reported data.
- 2005: Estimate based on reported data.
- 2006: Estimate based on reported data.
- 2007: Estimate based on reported data (97 percent) confirmed by survey (97 percent).
- 2008: Estimate based on reported data. Administrative data is based on reports from 9 of 25 districts.
- 2009: Estimate based on reported data.

	1997	1998	1999	2000	2001	2002	2003	2004	2005	2006	2007	2008	2009
Estimate	98	96	97	97	96	96	97	97	97	97	97	96	97
Reported	98	96	97	97	96	96	97	97	97	97	97	96	97
Official	NA	NA	NA	97	96	96	97	97	97	97	97	96	97
Administrative	NA	NA	NA	NA	NA	NA	95	NA	NA	44	NA	NA	97
Survey	95	NA	NA	NA	NA	NA	NA	NA	NA	NA	97	NA	NA

Italy - MCV

Description:

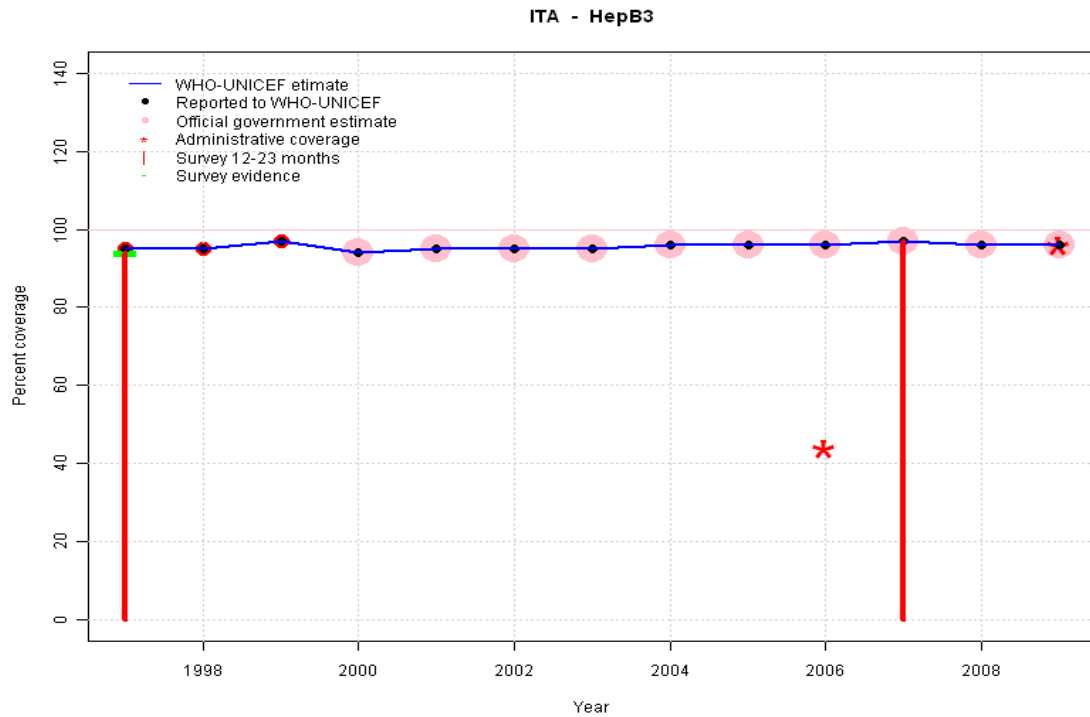


- 1997: Legacy estimate.
- 1998: Estimate based on reported data.
- 1999: Estimate based on reported data.
- 2000: Estimate based on reported data.
- 2001: Estimate based on reported data.
- 2002: Estimate based on reported data.
- 2003: Estimate based on reported data.
- 2004: Estimate based on reported data.
- 2005: Estimate based on reported data.
- 2006: Estimate based on reported data.
- 2007: Estimate based on reported data (90 percent) confirmed by survey (90 percent).
- 2008: Estimate based on reported data. Administrative data is based on reports from 9 of 25 districts.
- 2009: Estimate based on reported data.

	1997	1998	1999	2000	2001	2002	2003	2004	2005	2006	2007	2008	2009
Estimate	57	55	70	74	77	81	84	86	87	88	90	90	91
Reported	57	55	70	74	77	81	84	86	87	88	90	90	91
Official	NA	NA	NA	74	77	81	84	86	87	88	90	90	91
Administrative	NA	NA	NA	NA	NA	NA	NA	NA	NA	25	NA	NA	91
Survey	56	NA	NA	NA	NA	NA	NA	NA	NA	NA	90	NA	NA

Italy - HepB3

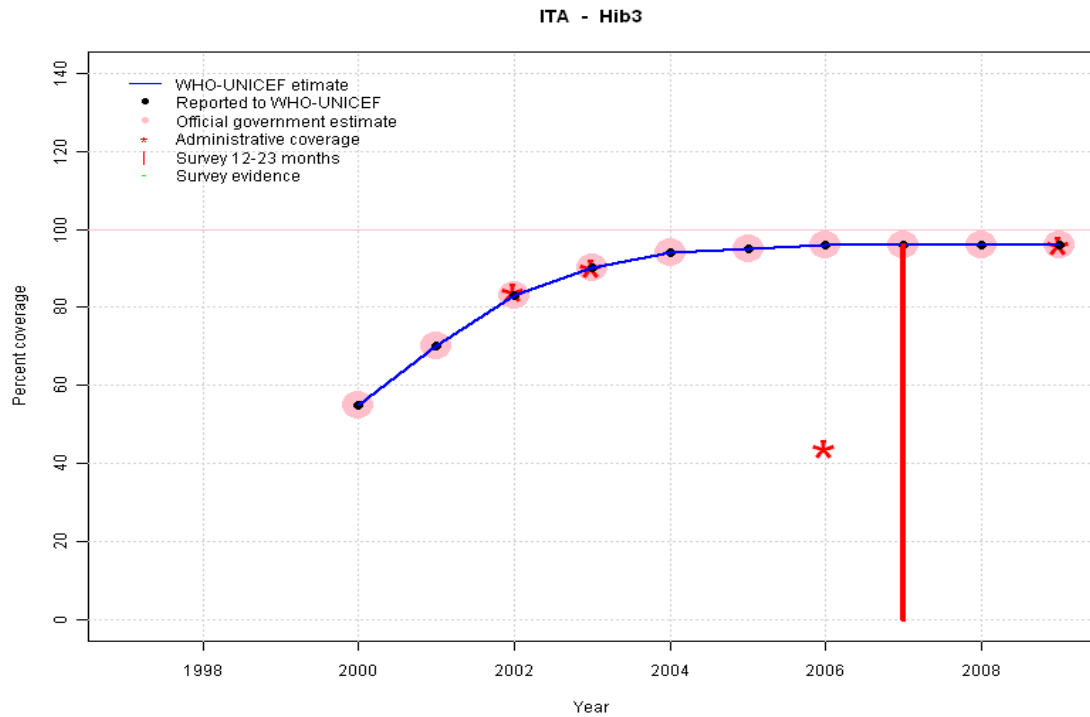
Description:



- 1997: Legacy estimate.
- 1998: Estimate based on reported data.
- 1999: Estimate based on reported data.
- 2000: Estimate based on reported data.
- 2001: Estimate based on reported data.
- 2002: Estimate based on reported data.
- 2003: Estimate based on reported data.
- 2004: Estimate based on reported data.
- 2005: Estimate based on reported data.
- 2006: Estimate based on reported data.
- 2007: Estimate based on reported data (97 percent) confirmed by survey (97 percent).
- 2008: Estimate based on reported data. Administrative data is based on reports from 9 of 25 districts.
- 2009: Estimate based on reported data.

	1997	1998	1999	2000	2001	2002	2003	2004	2005	2006	2007	2008	2009
Estimate	95	95	97	94	95	95	95	96	96	96	97	96	96
Reported	95	95	97	94	95	95	95	96	96	96	97	96	96
Official	NA	NA	NA	94	95	95	95	96	96	96	97	96	96
Administrative	NA	NA	NA	NA	NA	NA	NA	NA	NA	44	NA	NA	96
Survey	94	NA	NA	NA	NA	NA	NA	NA	NA	NA	97	NA	NA

Italy - Hib3

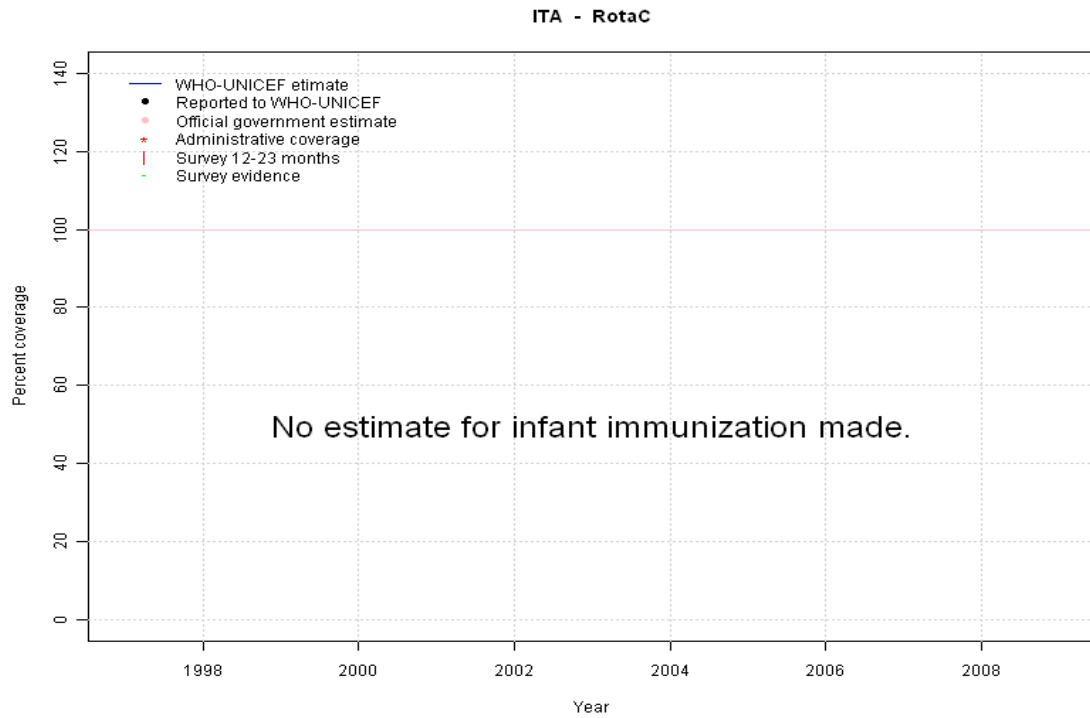


Description:

- 2000: Estimate based on trend in reported data. Hib introduced in 1999. Reporting started in 2000.
- 2001: Estimate based on trend in reported data.
- 2002: Estimate based on trend in reported data.
- 2003: Estimate based on trend in reported data.
- 2004: Estimate based on trend in reported data.
- 2005: Estimate based on trend in reported data.
- 2006: Estimate based on trend in reported data.
- 2007: Estimate based on reported data (96 percent) confirmed by survey (96 percent).
- 2008: Estimate based on reported data. Administrative data is based on reports from 9 of 25 districts.
- 2009: Estimate based on reported data.

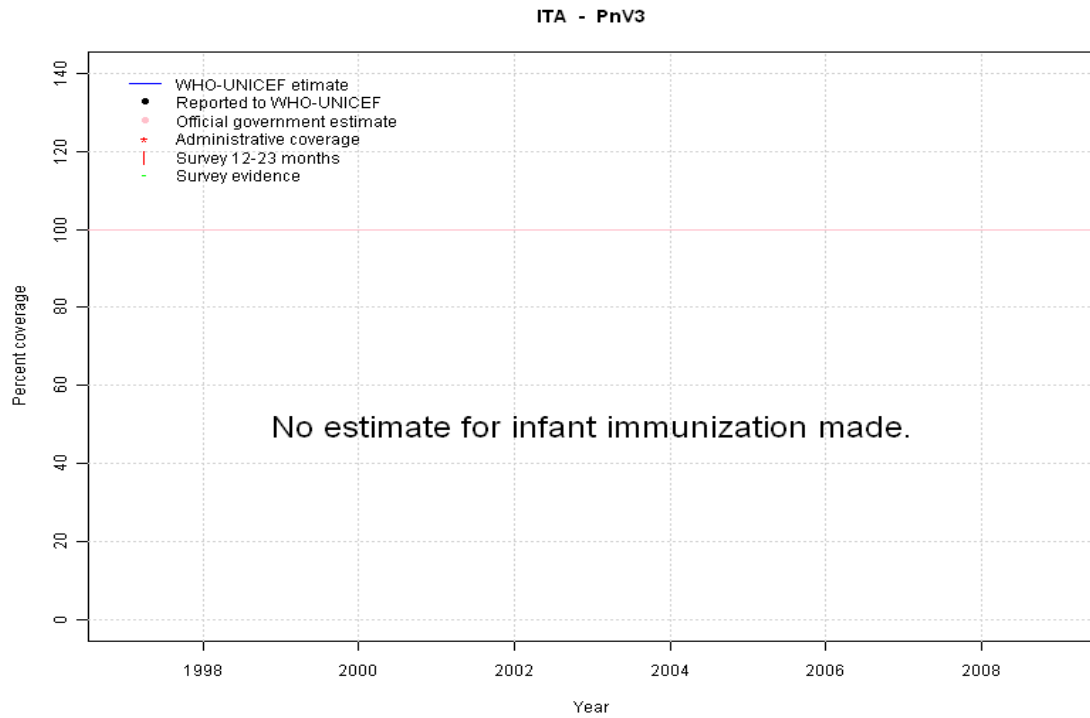
	1997	1998	1999	2000	2001	2002	2003	2004	2005	2006	2007	2008	2009
Estimate	NA	NA	NA	55	70	83	90	94	95	96	96	96	96
Reported	NA	NA	NA	55	70	83	90	94	95	96	96	96	96
Official	NA	NA	NA	55	70	83	90	94	95	96	96	96	96
Administrative	NA	NA	NA	NA	NA	84	90	NA	NA	44	NA	NA	96
Survey	NA	NA	NA	NA	NA	NA	NA	NA	NA	NA	96	NA	NA

Italy - RotaC



	1997	1998	1999	2000	2001	2002	2003	2004	2005	2006	2007	2008	2009
Estimate	NA	NA	NA	NA	NA	NA	NA	NA	NA	NA	NA	NA	NA
Reported	NA	NA	NA	NA	NA	NA	NA	NA	NA	NA	NA	NA	NA
Official	NA	NA	NA	NA	NA	NA	NA	NA	NA	NA	NA	NA	NA
Administrative	NA	NA	NA	NA	NA	NA	NA	NA	NA	NA	NA	NA	NA
Survey	NA	NA	NA	NA	NA	NA	NA	NA	NA	NA	NA	NA	NA

Italy - PnV3



	1997	1998	1999	2000	2001	2002	2003	2004	2005	2006	2007	2008	2009
Estimate	NA	NA	NA	NA	NA	NA	NA	NA	NA	NA	NA	NA	NA
Reported	NA	NA	NA	NA	NA	NA	NA	NA	NA	NA	NA	NA	NA
Official	NA	NA	NA	NA	NA	NA	NA	NA	NA	NA	NA	NA	NA
Administrative	NA	NA	NA	NA	NA	NA	NA	NA	NA	NA	NA	NA	NA
Survey	NA	NA	NA	NA	NA	NA	NA	NA	NA	NA	NA	NA	NA

Italy - survey details

2007 ICONA 2008: Indagine di COpertura vaccinale Nazionale nei bambini e negli adolescenti

Vaccine	Confirmation method	Coverage	Age cohort	Sample	Cards seen
DTP3	Card or History	97	12-23 m	3806	0
HepB3	Card or History	97	12-23 m	3806	0
Hib3	Card or History	96	12-23 m	3806	0
MCV	Card or History	90	15-26 m	3806	0
PnV3	Card or History	55	12-23 m	3806	0
Pol3	Card or History	97	12-23 m	3806	0

2001 ICONA Survey 2003

Vaccine	Confirmation method	Coverage	Age cohort	Sample	Cards seen
---------	---------------------	----------	------------	--------	------------

DTP3	Card	96	16-28 m	4602	0
HepB3	Card	96	16-28 m	4602	0
Hib3	Card	87	16-28 m	4602	0
MCV	Card	77	16-28 m	4602	0
Pol3	Card	96	16-28 m	4602	0

1997 ICONA: indagine nazionale sulla copertura vaccinale infantile 1996

Vaccine	Confirmation method	Coverage	Age cohort	Sample	Cards seen
DTP3	Card or History	95	12-24 m	4310	0
HepB3	Card or History	94	12-24 m	4310	0
MCV	Card or History	56	12-24 m	4310	0
Pol3	Card or History	95	12-24 m	4310	0

Further information and estimates for 1980-1996 are available at:

http://www.childinfo.org/immunization_countryreports.html

http://www.who.int/immunization_monitoring/routine/immunization_coverage/en/index4.html