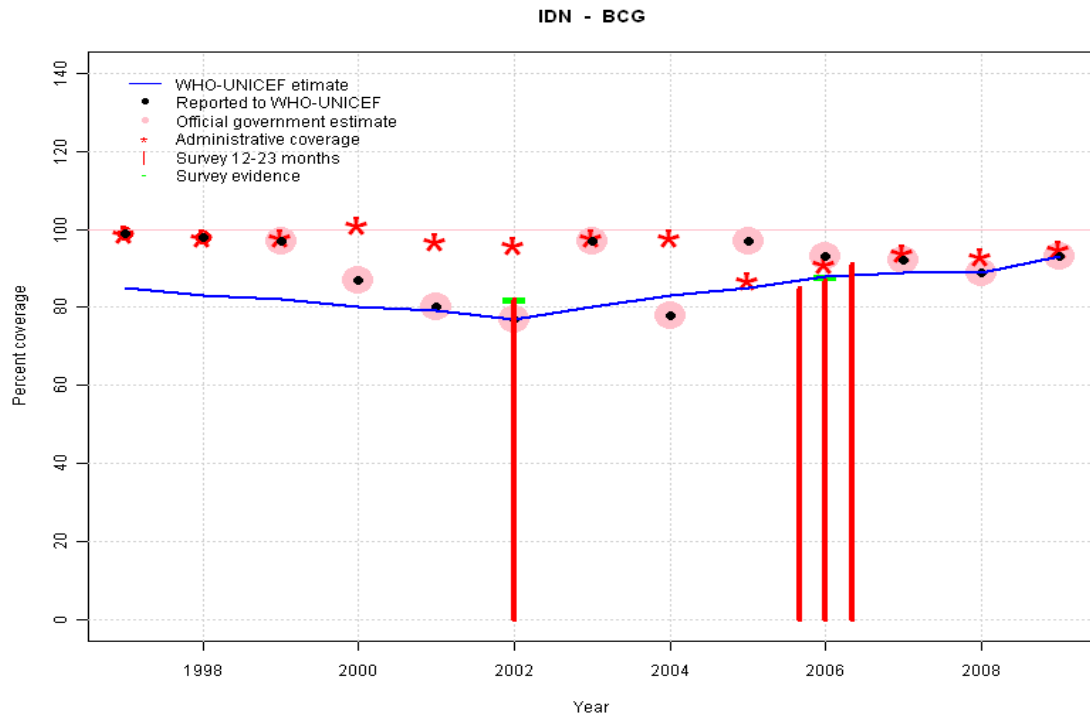


# Indonesia - BCG

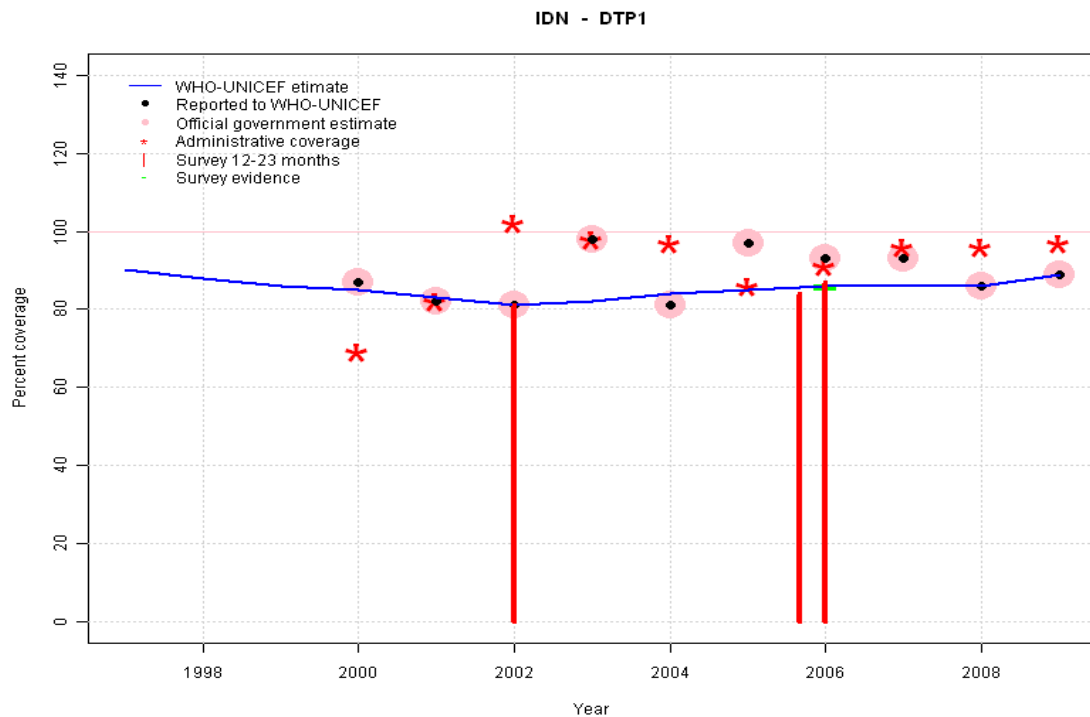


	1997	1998	1999	2000	2001	2002	2003	2004	2005	2006	2007	2008	2009
Estimate	85	83	82	80	79	77	80	83	85	88	89	89	93
Reported	99	98	97	87	80	77	97	78	97	93	92	89	93
Official	NA	NA	97	87	80	77	97	78	97	93	92	89	93
Administrative	99	98	98	101	97	96	98	98	87	91	94	93	95
Survey	NA	NA	NA	NA	NA	82	NA	NA	NA	88	NA	NA	NA

## Description:

- 1997: Legacy estimate.
- 1998: Estimate based on working group decision to interpolated between 1997 and 2002. Fluctuating and inconsistent data suggest poor reporting.
- 1999: Estimate based on working group decision to interpolated between 1997 and 2002. Fluctuating and inconsistent data suggest poor reporting.
- 2000: Estimate based on working group decision to interpolated between 1997 and 2002. Fluctuating and inconsistent data suggest poor reporting.
- 2001: Estimate based on working group decision to interpolated between 1997 and 2002. Fluctuating and inconsistent data suggest poor reporting.
- 2002: Estimate based on reported data (77 percent) confirmed by survey (82 percent).
- 2003: Estimate based on working group decision to interpolated between 2002 and 2006. Fluctuating and inconsistent data suggest poor reporting. 2003 reported data (97 percent) inconsistent with data from other years.
- 2004: Estimate based on working group decision to interpolated between 2002 and 2006. Fluctuating and inconsistent data suggest poor reporting. 2004 reported data (78 percent) inconsistent with data from other years.
- 2005: Estimate based on working group decision to interpolated between 2002 and 2006. Fluctuating and inconsistent data suggest poor reporting.
- 2006: Estimate is based on the averaged results of 3 surveys conducted in this year.
- 2007: Estimate interpolated between 2006 and 2008 estimates.
- 2008: National reports beginning in 2008 are based on administrative data calibrated to take into account the results of the 2007 EPI coverage survey. Estimate is based on the nationally reported data.
- 2009: Estimate based on reported data.

# Indonesia - DTP1

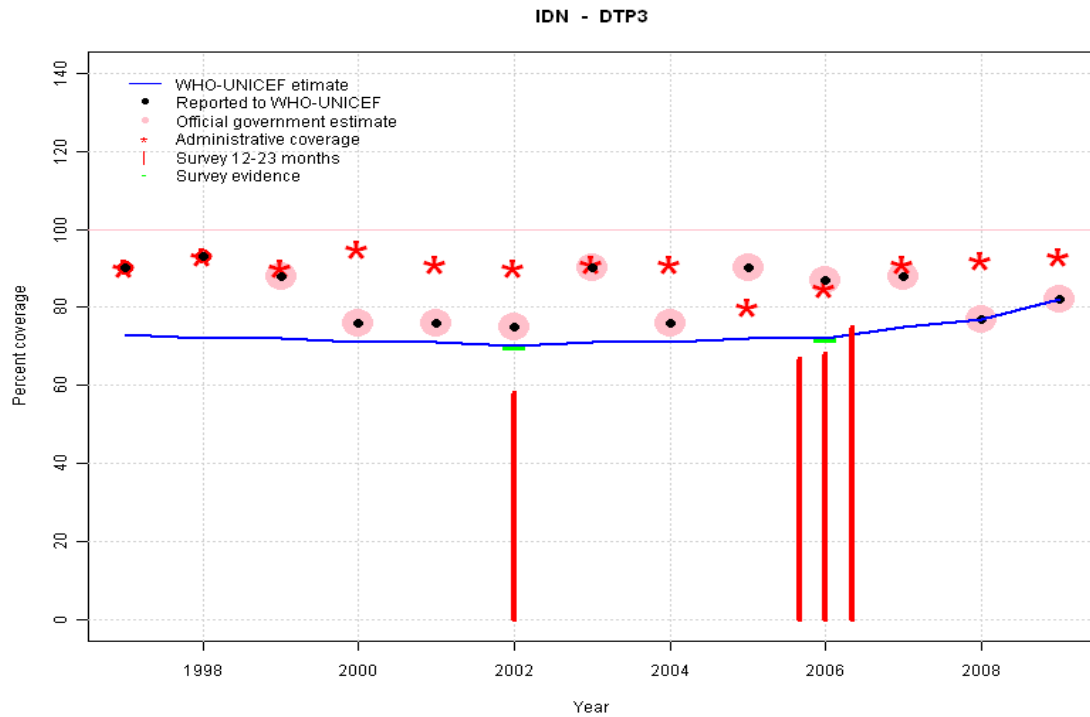


	1997	1998	1999	2000	2001	2002	2003	2004	2005	2006	2007	2008	2009
Estimate	90	88	86	85	83	81	82	84	85	86	86	86	89
Reported	NA	NA	NA	87	82	81	98	81	97	93	93	86	89
Official	NA	NA	NA	87	82	81	98	81	97	93	93	86	89
Administrative	NA	NA	NA	69	82	102	98	97	86	91	96	96	97
Survey	NA	NA	NA	NA	NA	81	NA	NA	NA	86	NA	NA	NA

## Description:

- 1997: Legacy estimate.
- 1998: Estimate based on working group decision to interpolated between 1997 and 2002. Fluctuating and inconsistent data suggest poor reporting.
- 1999: Estimate based on working group decision to interpolated between 1997 and 2002. Fluctuating and inconsistent data suggest poor reporting.
- 2000: Estimate based on working group decision to interpolated between 1997 and 2002. Fluctuating and inconsistent data suggest poor reporting.
- 2001: Estimate based on working group decision to interpolated between 1997 and 2002. Fluctuating and inconsistent data suggest poor reporting.
- 2002: Estimate based on reported data (81 percent) confirmed by survey (81 percent).
- 2003: Estimate based on working group decision to interpolated between 2002 and 2006. Fluctuating and inconsistent data suggest poor reporting. 2003 reported data (98 percent) inconsistent with data from other years.
- 2004: Estimate based on working group decision to interpolated between 2002 and 2006. Fluctuating and inconsistent data suggest poor reporting. 2004 reported data (81 percent) inconsistent with data from other years.
- 2005: Estimate based on working group decision to interpolated between 2002 and 2006. Fluctuating and inconsistent data suggest poor reporting.
- 2006: Estimate is based on the averaged results of two surveys conducted in this year.
- 2007: Estimate interpolated between 2006 and 2008 estimates.
- 2008: National reports beginning in 2008 are based on administrative data calibrated to take into account the results of the 2007 EPI coverage survey. Estimate is based on the nationally reported data.
- 2009: Estimate based on reported data.

# Indonesia - DTP3

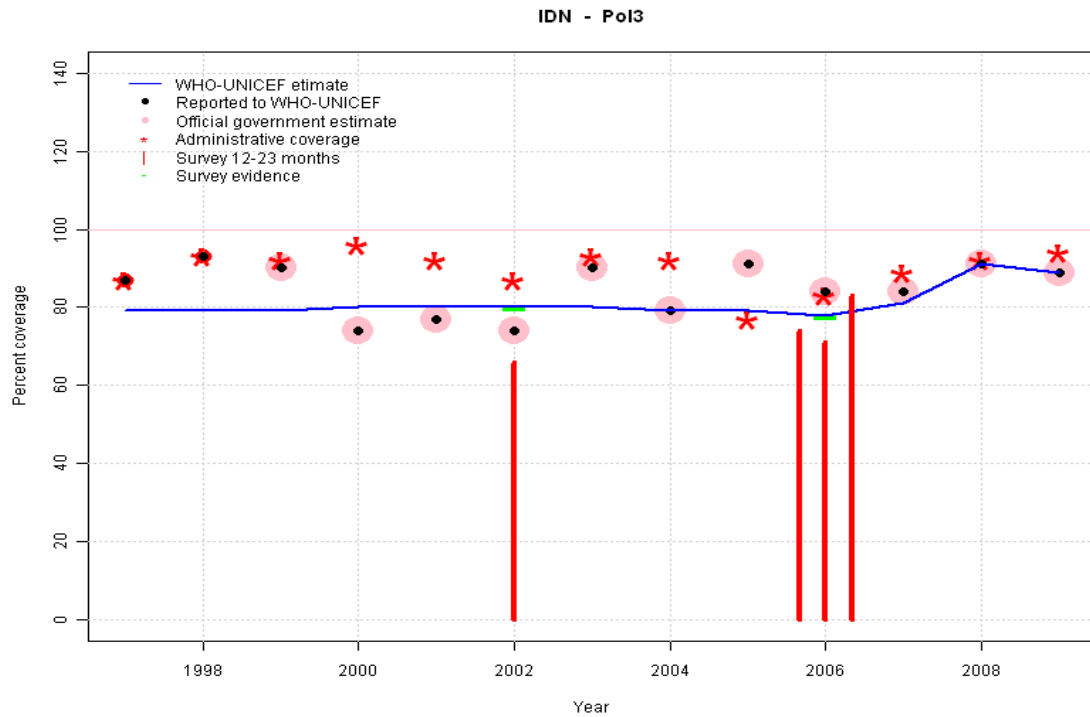


	1997	1998	1999	2000	2001	2002	2003	2004	2005	2006	2007	2008	2009
Estimate	73	72	72	71	71	70	71	71	72	72	75	77	82
Reported	90	93	88	76	76	75	90	76	90	87	88	77	82
Official	NA	NA	88	76	76	75	90	76	90	87	88	77	82
Administrative	90	93	90	95	91	90	91	91	80	85	91	92	93
Survey	NA	NA	NA	NA	NA	70	NA	NA	NA	72	NA	NA	NA

## Description:

- 1997: Legacy estimate.
- 1998: Estimate based on working group decision to interpolated between 1997 and 2002. Fluctuating and inconsistent data suggest poor reporting.
- 1999: Estimate based on working group decision to interpolated between 1997 and 2002. Fluctuating and inconsistent data suggest poor reporting.
- 2000: Estimate based on working group decision to interpolated between 1997 and 2002. Fluctuating and inconsistent data suggest poor reporting.
- 2001: Estimate based on working group decision to interpolated between 1997 and 2002. Fluctuating and inconsistent data suggest poor reporting.
- 2002: Estimate is based on survey results Survey results (58 percent) adjusted for recall bias to 70 percent based on first dose card or history coverage (81 percent) and documented drop-out between first (94 percent) and third (81 percent) doses.
- 2003: Estimate based on working group decision to interpolated between 2002 and 2006. Fluctuating and inconsistent data suggest poor reporting. 2003 reported data (90 percent) inconsistent with data from other years.
- 2004: Estimate based on working group decision to interpolated between 2002 and 2006. Fluctuating and inconsistent data suggest poor reporting. 2004 reported data (76 percent) inconsistent with data from other years.
- 2005: Estimate based on working group decision to interpolated between 2002 and 2006. Fluctuating and inconsistent data suggest poor reporting.
- 2006: Estimate is based on the averaged results of 3 surveys conducted in this year. Survey results (67 percent) adjusted for recall bias to 72 percent based on first dose card or history coverage (84 percent) and documented drop-out between first (36 percent) and third (31 percent) doses.
- 2007: Estimate interpolated between 2006 and 2008 estimates.
- 2008: National reports beginning in 2008 are based on administrative data calibrated to take into account the results of the 2007 EPI coverage survey. Estimate is based on the nationally reported data.
- 2009: Estimate based on reported data.

# Indonesia - Pol3



	1997	1998	1999	2000	2001	2002	2003	2004	2005	2006	2007	2008	2009
Estimate	79	79	79	80	80	80	80	79	79	78	81	91	89
Reported	87	93	90	74	77	74	90	79	91	84	84	91	89
Official	NA	NA	90	74	77	74	90	79	91	84	84	91	89
Administrative	87	93	92	96	92	87	93	92	77	83	89	92	94
Survey	NA	NA	NA	NA	NA	80	NA	NA	NA	78	NA	NA	NA

## Description:

1997: Legacy estimate.

1998: Estimate interpolated between 1997 and 2002 estimates.

1999: Estimate interpolated between 1997 and 2002 estimates.

2000: Estimate interpolated between 1997 and 2002 estimates.

2001: Estimate interpolated between 1997 and 2002 estimates.

2002: Estimate is based on survey results Survey results (66 percent) adjusted for recall bias to 80 percent based on first dose card or history coverage (87 percent) and documented drop-out between first (96 percent) and third (88 percent) doses.

2003: Estimate based on working group decision to interpolated between 2002 and 2006. Fluctuating and inconsistent data suggest poor reporting. 2003 reported data (90 percent) inconsistent with data from other years.

2004: Estimate based on working group decision to interpolated between 2002 and 2006. Fluctuating and inconsistent data suggest poor reporting. 2004 reported data (79 percent) inconsistent with data from other years.

2005: Estimate based on working group decision to interpolated between 2002 and 2006. Fluctuating and inconsistent data suggest poor reporting.

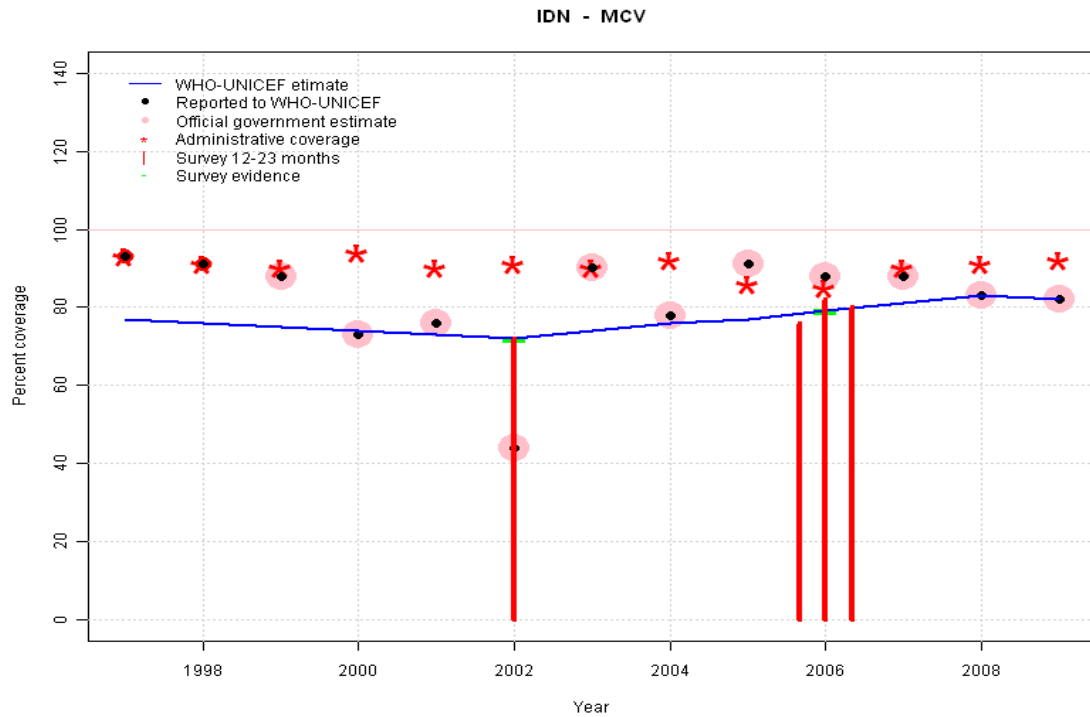
2006: Estimate is based on the averaged results of 3 surveys conducted in this year. Survey results (74 percent) adjusted for recall bias to 79 percent based on first dose card or history coverage (89 percent) and documented drop-out between first (36 percent) and third (32 percent) doses.

2007: Reported data (84 percent) calibrated to 2006 and 2008 levels.

2008: National reports beginning in 2008 are based on administrative data calibrated to take into account the results of the 2007 EPI coverage survey. Estimate is based on the nationally reported data.

2009: Estimate based on reported data.

# Indonesia - MCV



	1997	1998	1999	2000	2001	2002	2003	2004	2005	2006	2007	2008	2009
Estimate	77	76	75	74	73	72	74	76	77	79	81	83	82
Reported	93	91	88	73	76	44	90	78	91	88	88	83	82
Official	NA	NA	88	73	76	44	90	78	91	88	88	83	82
Administrative	93	91	90	94	90	91	90	92	86	85	90	91	92
Survey	NA	NA	NA	NA	NA	72	NA	NA	NA	79	NA	NA	NA

## Description:

1997: Legacy estimate.

1998: Estimate based on working group decision to interpolated between 1997 and 2002. Fluctuating and inconsistent data suggest poor reporting.

1999: Estimate based on working group decision to interpolated between 1997 and 2002. Fluctuating and inconsistent data suggest poor reporting.

2000: Estimate based on working group decision to interpolated between 1997 and 2002. Fluctuating and inconsistent data suggest poor reporting.

2001: Estimate based on working group decision to interpolated between 1997 and 2002. Fluctuating and inconsistent data suggest poor reporting.

2002: Estimate is based on survey results 2002 reported data (44 percent) inconsistent with data from other years.

2003: Estimate based on working group decision to interpolated between 2002 and 2006. Fluctuating and inconsistent data suggest poor reporting. 2003 reported data (90 percent) inconsistent with data from other years.

2004: Estimate based on working group decision to interpolated between 2002 and 2006. Fluctuating and inconsistent data suggest poor reporting. 2004 reported data (78 percent) inconsistent with data from other years.

2005: Estimate based on working group decision to interpolated between 2002 and 2006. Fluctuating and inconsistent data suggest poor reporting.

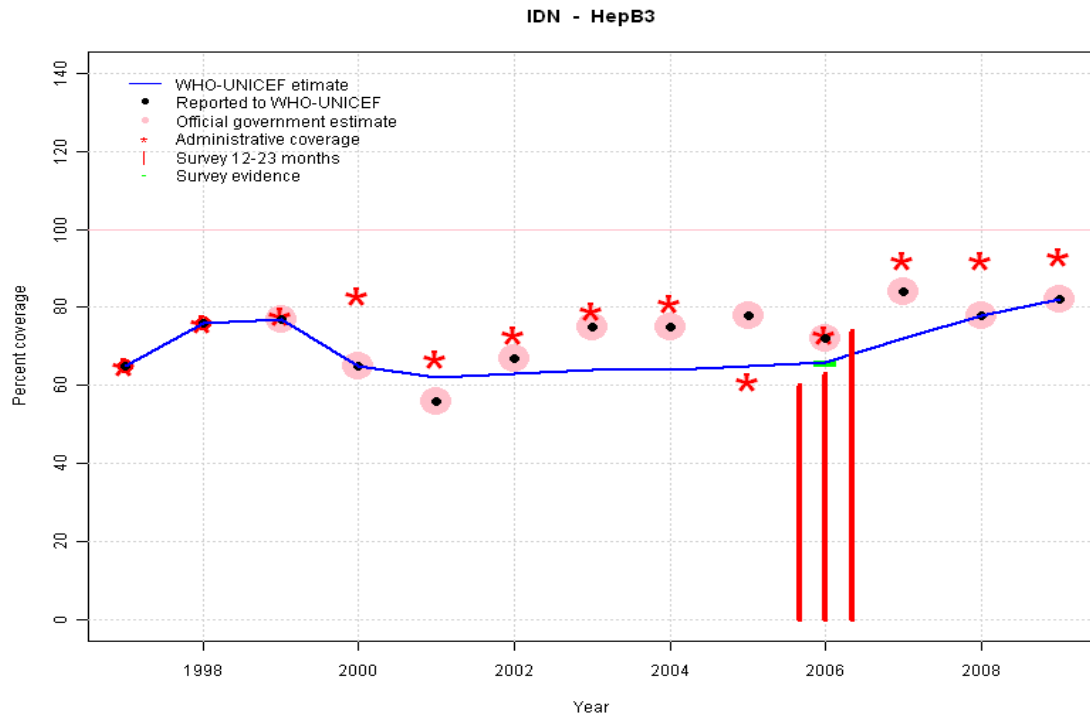
2006: Estimate is based on the averaged results of 3 surveys conducted in this year.

2007: Estimate interpolated between 2006 and 2008 estimates.

2008: National reports beginning in 2008 are based on administrative data calibrated to take into account the results of the 2007 EPI coverage survey. Estimate is based on the nationally reported data.

2009: Estimate based on reported data.

# Indonesia - HepB3

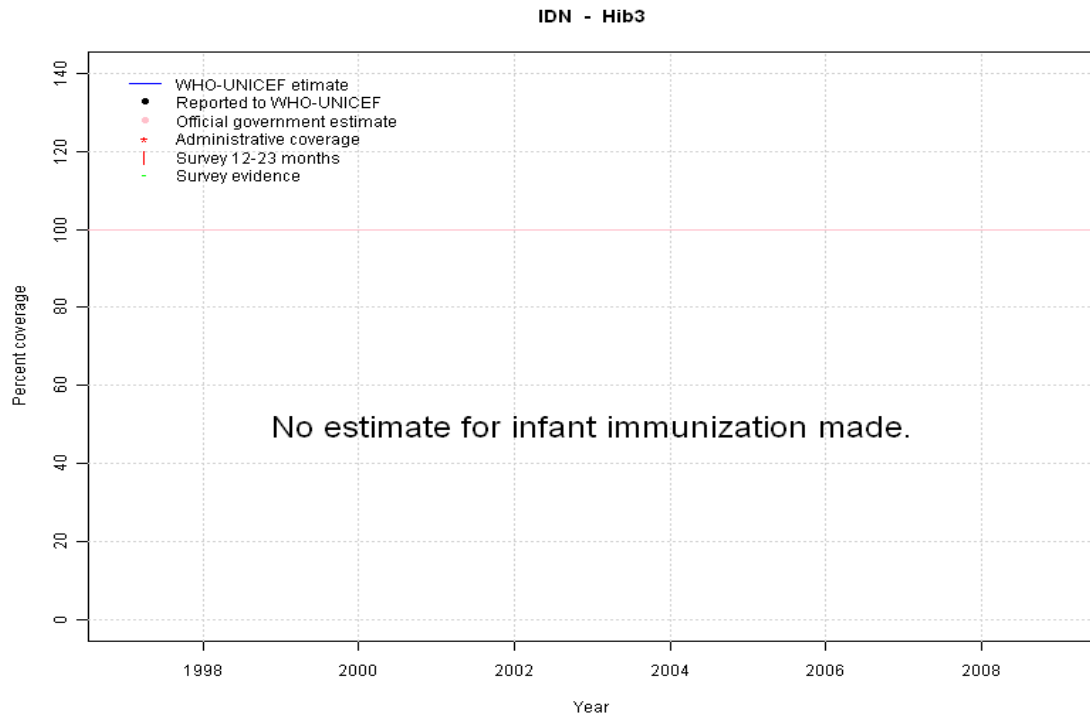


## Description:

- 1997: Legacy estimate.
- 1998: Estimate based on reported data.
- 1999: Estimate based on reported data.
- 2000: Estimate is based on the nationally reported data.
- 2001: Estimate is based on the results of the 2001 routine coverage survey (target group 12-35 months old).
- 2002: Estimate based on working group decision to interpolated between 2001 and 2006. Fluctuating and inconsistent data suggest poor reporting.
- 2003: Estimate based on working group decision to interpolated between 2001 and 2006. Fluctuating and inconsistent data suggest poor reporting.
- 2004: Estimate based on working group decision to interpolated between 2001 and 2006. Fluctuating and inconsistent data suggest poor reporting.
- 2005: Estimate based on working group decision to interpolated between 2001 and 2006. Fluctuating and inconsistent data suggest poor reporting.
- 2006: Estimate is based on the averaged results of 3 surveys conducted in this year.
- 2007: Estimate based on working group decision to interpolated between 2006 and 2008. Fluctuating and inconsistent data suggest poor reporting.
- 2008: National reports beginning in 2008 are based on administrative data calibrated to take into account the results of the 2007 EPI coverage survey. Estimate is based on the nationally reported data.
- 2009: Estimate based on reported data.

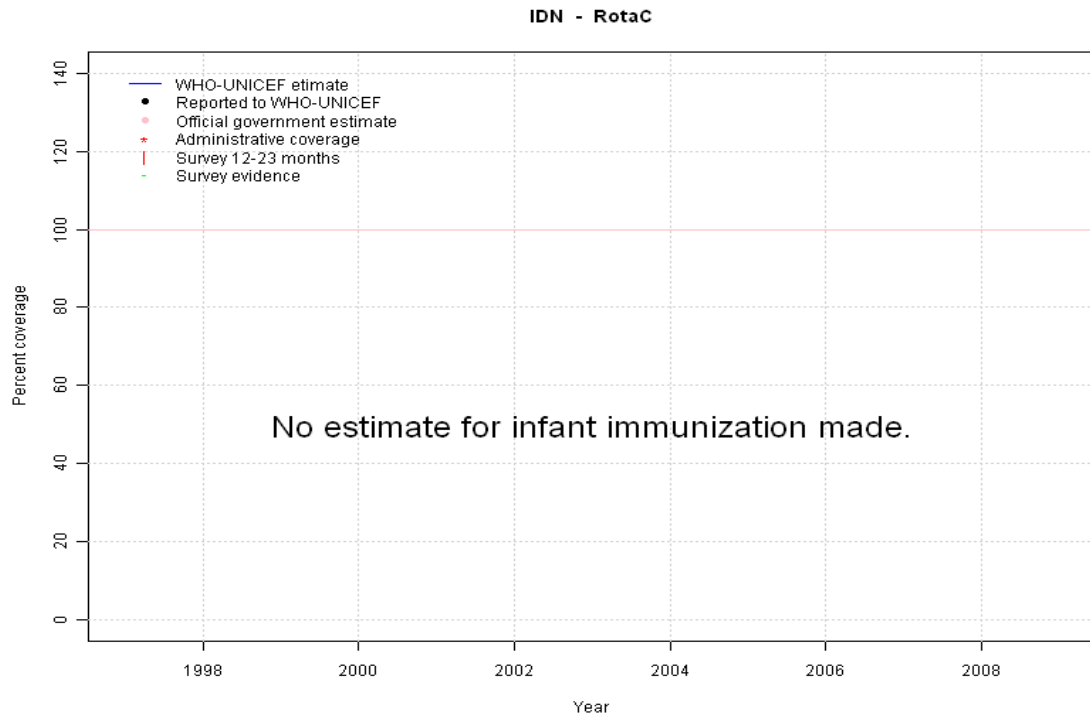
	1997	1998	1999	2000	2001	2002	2003	2004	2005	2006	2007	2008	2009
Estimate	65	76	77	65	62	63	64	64	65	66	72	78	82
Reported	65	76	77	65	56	67	75	75	78	72	84	78	82
Official	NA	NA	77	65	56	67	75	75	78	72	84	78	82
Administrative	65	76	78	83	67	73	79	81	61	73	92	92	93
Survey	NA	NA	NA	NA	NA	NA	NA	NA	NA	66	NA	NA	NA

# Indonesia - Hib3



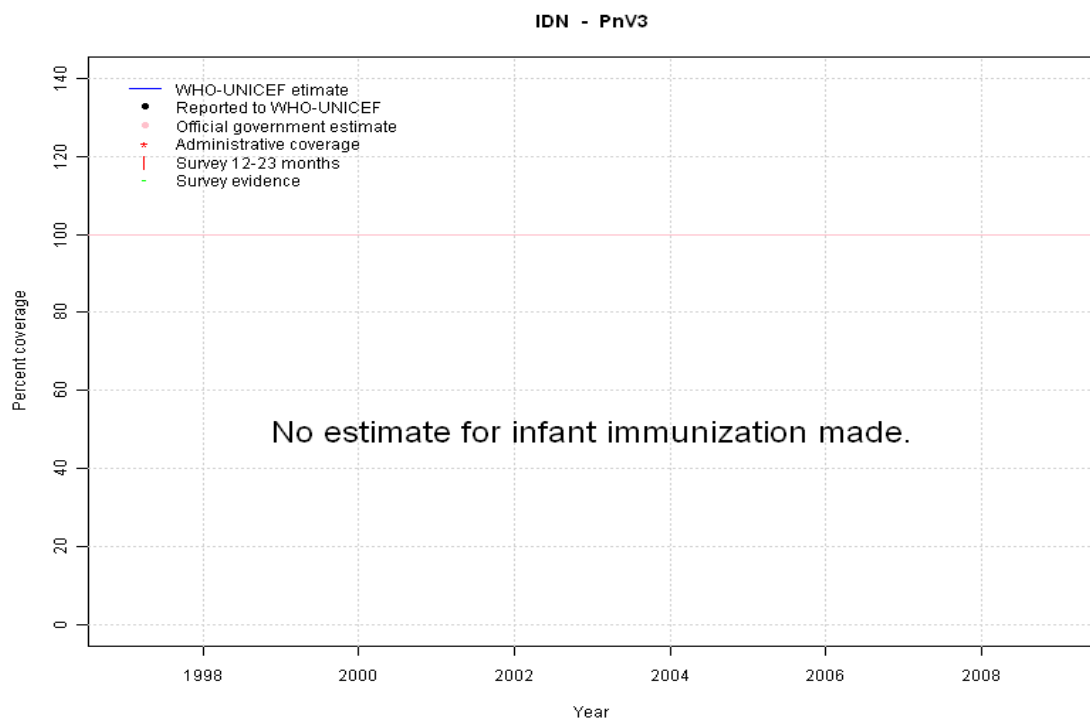
	1997	1998	1999	2000	2001	2002	2003	2004	2005	2006	2007	2008	2009
Estimate	NA	NA	NA	NA	NA	NA	NA	NA	NA	NA	NA	NA	NA
Reported	NA	NA	NA	NA	NA	NA	NA	NA	NA	NA	NA	NA	NA
Official	NA	NA	NA	NA	NA	NA	NA	NA	NA	NA	NA	NA	NA
Administrative	NA	NA	NA	NA	NA	NA	NA	NA	NA	NA	NA	NA	NA
Survey	NA	NA	NA	NA	NA	NA	NA	NA	NA	NA	NA	NA	NA

# Indonesia - RotaC



	1997	1998	1999	2000	2001	2002	2003	2004	2005	2006	2007	2008	2009
Estimate	NA	NA	NA	NA	NA	NA	NA	NA	NA	NA	NA	NA	NA
Reported	NA	NA	NA	NA	NA	NA	NA	NA	NA	NA	NA	NA	NA
Official	NA	NA	NA	NA	NA	NA	NA	NA	NA	NA	NA	NA	NA
Administrative	NA	NA	NA	NA	NA	NA	NA	NA	NA	NA	NA	NA	NA
Survey	NA	NA	NA	NA	NA	NA	NA	NA	NA	NA	NA	NA	NA

# Indonesia - PnV3



	1997	1998	1999	2000	2001	2002	2003	2004	2005	2006	2007	2008	2009
Estimate	NA	NA	NA	NA	NA	NA	NA	NA	NA	NA	NA	NA	NA
Reported	NA	NA	NA	NA	NA	NA	NA	NA	NA	NA	NA	NA	NA
Official	NA	NA	NA	NA	NA	NA	NA	NA	NA	NA	NA	NA	NA
Administrative	NA	NA	NA	NA	NA	NA	NA	NA	NA	NA	NA	NA	NA
Survey	NA	NA	NA	NA	NA	NA	NA	NA	NA	NA	NA	NA	NA

# Indonesia - survey details

## 2006 Indonesia Demographic and Health Survey 2007

Vaccine	Confirmation method	Coverage	Age cohort	Sample	Cards seen
BCG	C or H <12 months	84	12-23 m	3094	37
BCG	Card	35	12-23 m	3094	37
BCG	Card or History	85	12-23 m	3094	37
BCG	History	51	12-23 m	3094	37
DTP1	History	49	12-23 m	3094	37
DTP1	C or H <12 months	83	12-23 m	3094	37
DTP1	Card or History	84	12-23 m	3094	37
DTP1	Card	36	12-23 m	3094	37
DTP3	Card or History	67	12-23 m	3094	37
DTP3	C or H <12 months	64	12-23 m	3094	37
DTP3	History	35	12-23 m	3094	37
DTP3	Card	31	12-23 m	3094	37
HepB1	Card or History	80	12-23 m	3094	37
HepB3	Card or History	60	12-23 m	3094	37
MCV	C or H <12 months	67	12-23 m	3094	37
MCV	Card	31	12-23 m	3094	37
MCV	Card or History	76	12-23 m	3094	37
MCV	History	46	12-23 m	3094	37
Pol1	Card or History	89	12-23 m	3094	37
Pol1	Card	36	12-23 m	3094	37
Pol1	History	53	12-23 m	3094	37
Pol1	C or H <12 months	87	12-23 m	3094	37
Pol3	C or H <12 months	71	12-23 m	3094	37
Pol3	Card	32	12-23 m	3094	37
Pol3	Card or History	74	12-23 m	3094	37
Pol3	History	41	12-23 m	3094	37

## 2006 Report of Result of National Basic Health Research (RISKEDAS) 2007

Vaccine	Confirmation method	Coverage	Age cohort	Sample	Cards seen
BCG	Card or History	87	12-23 m	438	23
DTP3	Card or History	68	12-23 m	438	23
HepB3	Card or History	63	12-23 m	438	23
MCV	Card or History	82	12-23 m	438	23

Pol3	Card or History	71	12-23 m	438	23
------	-----------------	----	---------	-----	----

## 2006 Republic of Indonesia Immunization Coverage Survey 2007

Vaccine	Confirmation method	Coverage	Age cohort	Sample	Cards seen
BCG	Card or History	91	12-23 m	18204	52
DTP1	Card or History	87	12-23 m	18204	52
DTP3	Card or History	75	12-23 m	18204	52
HepB3	Card or History	74	12-23 m	18204	52
MCV	Card or History	80	12-23 m	18204	52
Pol3	Card or History	83	12-23 m	18204	52

## 2002 Indonesia Demographic and Health Survey 2002-2003

Vaccine	Confirmation method	Coverage	Age cohort	Sample	Cards seen
BCG	Card or History	82	12-23 m	2819	31
BCG	Card	93	12-23 m	2819	31
BCG	History	78	12-23 m	2819	31
DTP1	Card	94	12-23 m	2819	31
DTP1	Card or History	81	12-23 m	2819	31
DTP1	History	76	12-23 m	2819	31
DTP3	History	48	12-23 m	2819	31
DTP3	Card	81	12-23 m	2819	31
DTP3	Card or History	58	12-23 m	2819	31
MCV	History	68	12-23 m	2819	31
MCV	Card or History	72	12-23 m	2819	31
MCV	Card	71	12-23 m	2819	31
Pol1	Card	96	12-23 m	2819	31
Pol1	Card or History	87	12-23 m	2819	31
Pol1	History	84	12-23 m	2819	31
Pol3	Card	88	12-23 m	2819	31
Pol3	Card or History	66	12-23 m	2819	31
Pol3	History	56	12-23 m	2819	31

## 2001 NID + Routine Coverage Survey

Vaccine	Confirmation method	Coverage	Age cohort	Sample	Cards seen
---------	---------------------	----------	------------	--------	------------

## Indonesia - survey details

---

BCG	Card or History	76	12-35 m	0	66
DTP1	Card or History	77	12-35 m	0	66
DTP3	Card or History	67	12-35 m	0	66
HepB3	Card or History	62	12-35 m	0	66

MCV	Card or History	70	12-35 m	0	66
Pol3	Card or History	67	12-35 m	0	66

Further information and estimates for 1980-1996 are available at:

[http://www.childinfo.org/immunization\\_countryreports.html](http://www.childinfo.org/immunization_countryreports.html)

[http://www.who.int/immunization\\_monitoring/routine/immunization\\_coverage/en/index4.html](http://www.who.int/immunization_monitoring/routine/immunization_coverage/en/index4.html)

## Indonesia

### WHO/UNICEF Estimates of Protection at Birth (PAB) against tetanus

In countries where tetanus is recommended for girls and women coverage is usually reported as "TT2+", i.e. the proportion of (pregnant) women who have received their second or superior TT dose in a given year. TT2 + coverage, however, can under-represent the actual proportion of births that are protected against tetanus as it does not include women who have previously received protective doses, women who received one dose without documentation of previous doses, and women who received doses in TT (or Td) supplemental immunization activities (SIA). In addition, girls who have received DTP in their childhood and are entering childbearing age, may be protected with TT booster doses.

WHO and UNICEF have developed a model that takes into account the above scenarios, and calculates the proportion of births in a given year that can be considered as having been protected against tetanus - "Protection at Birth".

In this model, annual cohorts of women are followed from infancy through their life. A proportion receive DTP in infancy (estimated based on the WHO-UNICEF estimates of DTP3 coverage). In addition some of these women also receive TT through routine services when they are pregnant and may also receive TT during SIAs. The model also adjusts reported data, taking into account coverage patterns in other years, and/or results available through surveys. The duration of protection is then calculated, based on WHO estimates of the duration of protection by doses ever received. The proportion of births that are protected against tetanus as a result of maternal immunization reflects the tetanus immunization received by the mother throughout her life rather than simply the TT immunizations received during the current pregnancy.

Year	PAB coverage estimate (%)
1997	79
1998	80
1999	81
2000	82
2001	82
2002	82
2003	82
2004	82
2005	83
2006	83
2007	83
2008	79
2009	85

---

<sup>1</sup> This model is described in: Griffiths U., Wolfson L., Quddus A., Younus M., Hafiz R.. Incremental cost-effectiveness of supplementary immunization activities to prevent neo-natal tetanus in Pakistan. Bulletin of the World Health Organization 2004; 82:643-651.