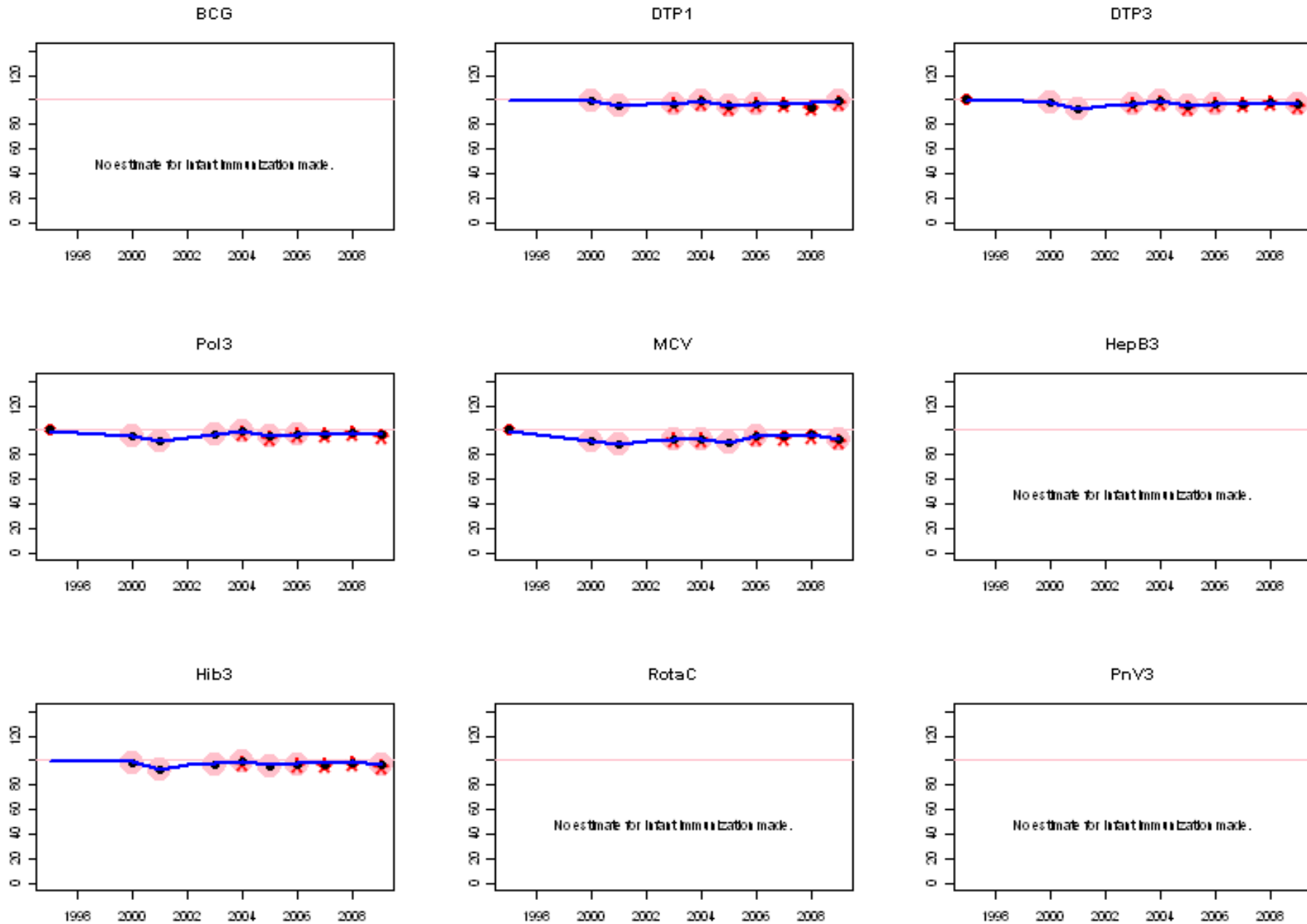
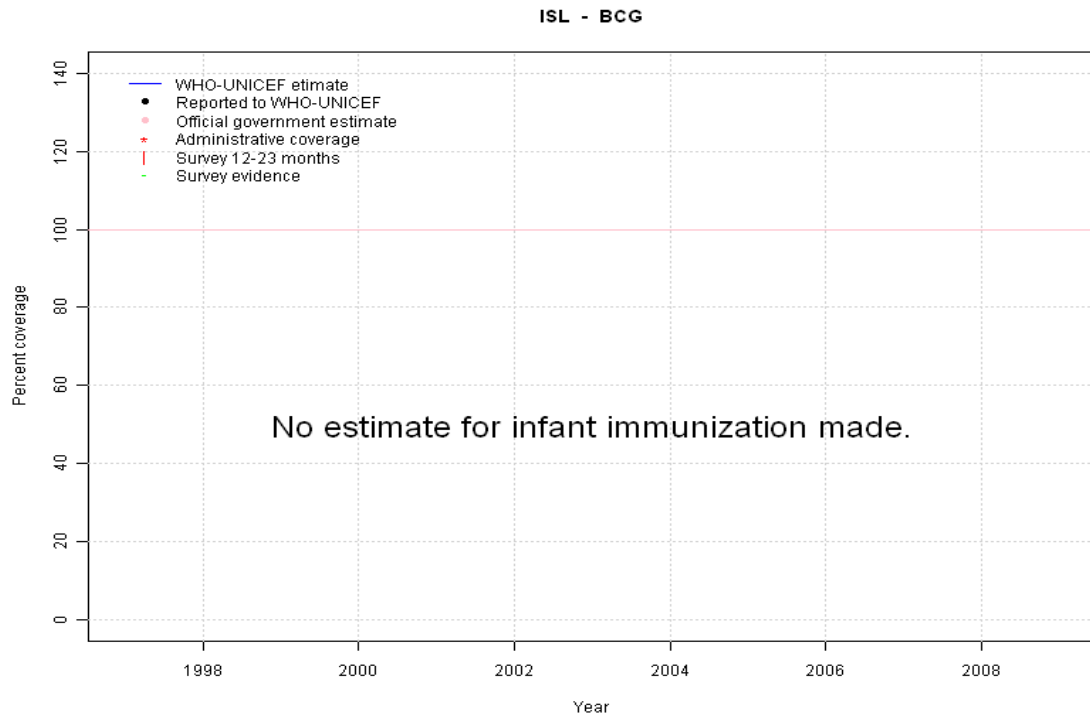


Iceland: WHO and UNICEF estimates of immunization coverage, 1997 - 2009



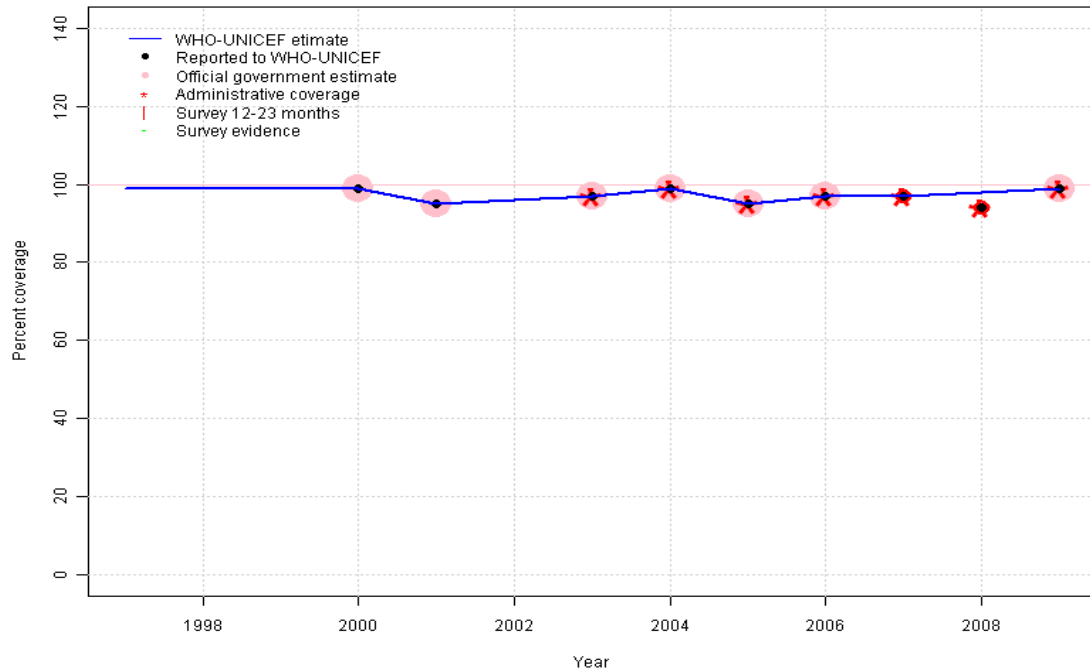
Iceland - BCG



	1997	1998	1999	2000	2001	2002	2003	2004	2005	2006	2007	2008	2009
Estimate	NA	NA	NA	NA	NA	NA	NA	NA	NA	NA	NA	NA	NA
Reported	NA	NA	NA	NA	NA	NA	NA	NA	NA	NA	NA	NA	NA
Official	NA	NA	NA	NA	NA	NA	NA	NA	NA	NA	NA	NA	NA
Administrative	NA	NA	NA	NA	NA	NA	NA	NA	NA	NA	NA	NA	NA
Survey	NA	NA	NA	NA	NA	NA	NA	NA	NA	NA	NA	NA	NA

Iceland - DTP1

ISL - DTP1



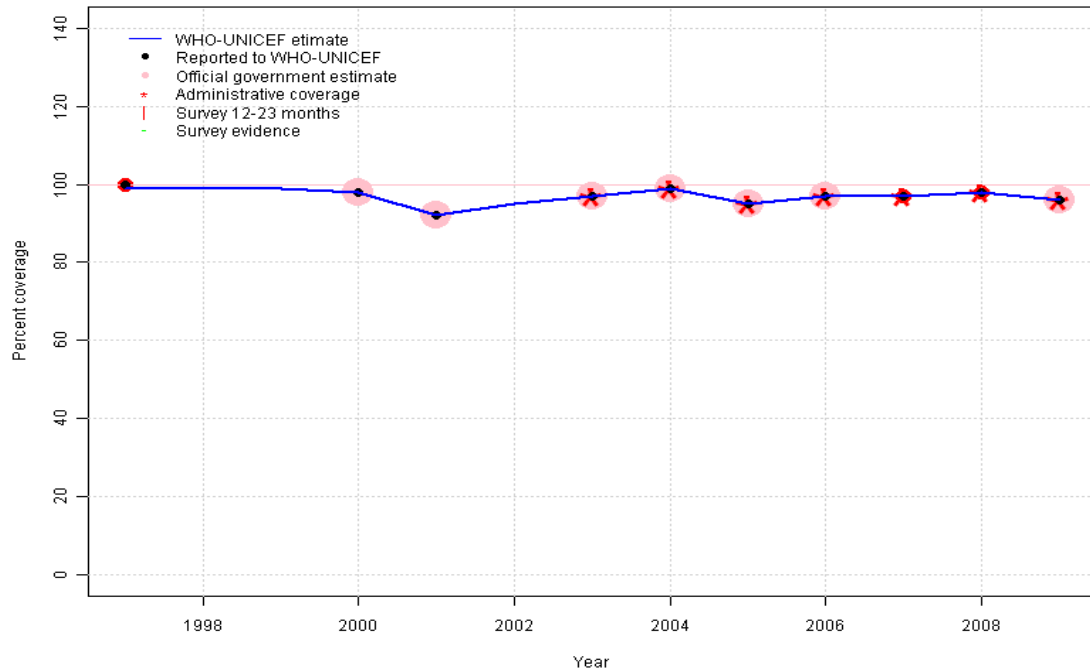
Description:

- 1997: Legacy estimate.
- 1998: Estimate based on trend in reported data. Missing or ignored reported value estimated by extrapolation from 2000 reported value of 99 percent.
- 1999: Estimate based on trend in reported data. Missing or ignored reported value estimated by extrapolation from 2000 reported value of 99 percent.
- 2000: Estimate based on reported data.
- 2001: Estimate based on reported data.
- 2002: Estimate based on trend in reported data. Missing or ignored reported value estimated by interpolation between reported values of 95 percent in 2001 and 97 percent in 2003.
- 2003: Estimate based on reported data.
- 2004: Estimate based on reported data.
- 2005: Estimate based on reported data.
- 2006: Estimate based on reported data.
- 2007: Estimate based on reported data.
- 2008: Estimated DTP3 greater than estimated DTP1; DTP1 estimate based on the relationship between DTP1 and DTP3 from 282 surveys.
- 2009: Estimate based on reported data.

	1997	1998	1999	2000	2001	2002	2003	2004	2005	2006	2007	2008	2009
Estimate	99	99	99	99	95	96	97	99	95	97	97	98	99
Reported	NA	NA	NA	99	95	NA	97	99	95	97	97	94	99
Official	NA	NA	NA	99	95	NA	97	99	95	97	NA	NA	99
Administrative	NA	NA	NA	NA	NA	NA	97	99	95	97	97	94	99
Survey	NA	NA	NA	NA	NA	NA	NA	NA	NA	NA	NA	NA	NA

Iceland - DTP3

ISL - DTP3



Description:

1997: Legacy estimate.

1998: Estimate based on trend in reported data. Missing or ignored reported value estimated by interpolation between reported values of 100 percent in 1997 and 98 percent in 2000.

1999: Estimate based on trend in reported data. Missing or ignored reported value estimated by interpolation between reported values of 100 percent in 1997 and 98 percent in 2000.

2000: Estimate based on reported data.

2001: Estimate based on reported data.

2002: Estimate based on trend in reported data. Missing or ignored reported value estimated by interpolation between reported values of 92 percent in 2001 and 97 percent in 2003.

2003: Estimate based on reported data.

2004: Estimate based on reported data.

2005: Estimate based on reported data.

2006: Estimate based on reported data.

2007: Estimate based on reported data.

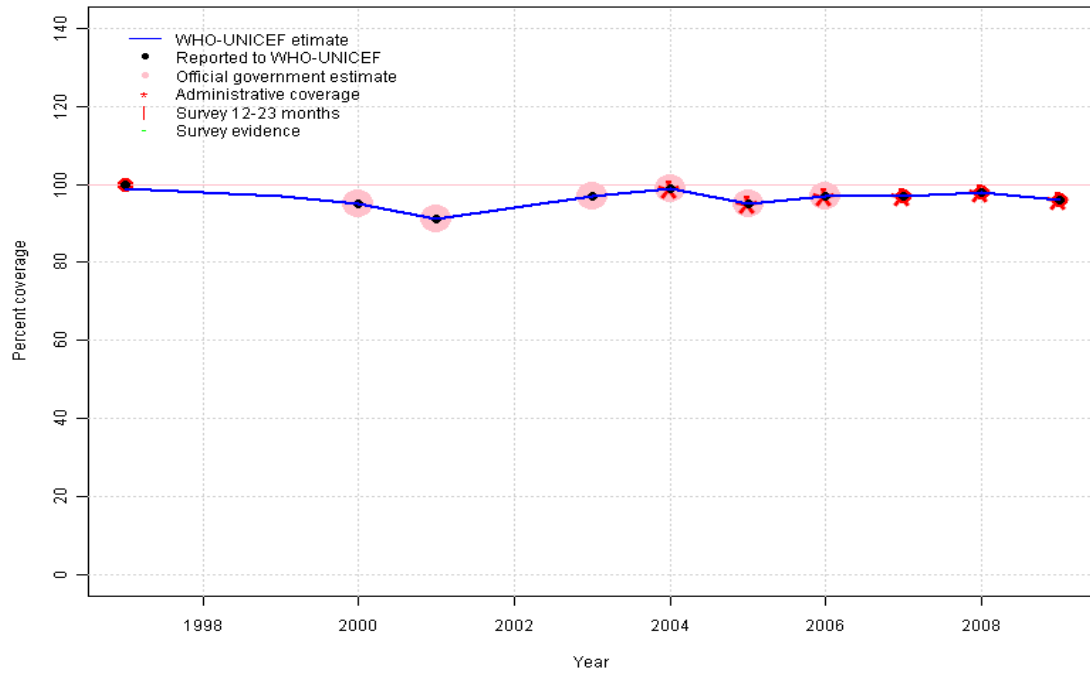
2008: Estimate based on reported data.

2009: Estimate based on reported data.

	1997	1998	1999	2000	2001	2002	2003	2004	2005	2006	2007	2008	2009
Estimate	99	99	99	98	92	95	97	99	95	97	97	98	96
Reported	100	NA	NA	98	92	NA	97	99	95	97	97	98	96
Official	NA	NA	NA	98	92	NA	97	99	95	97	NA	NA	96
Administrative	NA	NA	NA	NA	NA	NA	97	99	95	97	97	98	96
Survey	NA	NA	NA	NA	NA	NA	NA	NA	NA	NA	NA	NA	NA

Iceland - Pol3

ISL - Pol3



Description:

1997: Legacy estimate.

1998: Estimate based on trend in reported data. Missing or ignored reported value estimated by interpolation between reported values of 100 percent in 1997 and 95 percent in 2000.

1999: Estimate based on trend in reported data. Missing or ignored reported value estimated by interpolation between reported values of 100 percent in 1997 and 95 percent in 2000.

2000: Estimate based on reported data.

2001: Estimate based on reported data.

2002: Estimate based on trend in reported data. Missing or ignored reported value estimated by interpolation between reported values of 91 percent in 2001 and 97 percent in 2003.

2003: Estimate based on reported data.

2004: Estimate based on reported data.

2005: Estimate based on reported data.

2006: Estimate based on reported data.

2007: Estimate based on reported data.

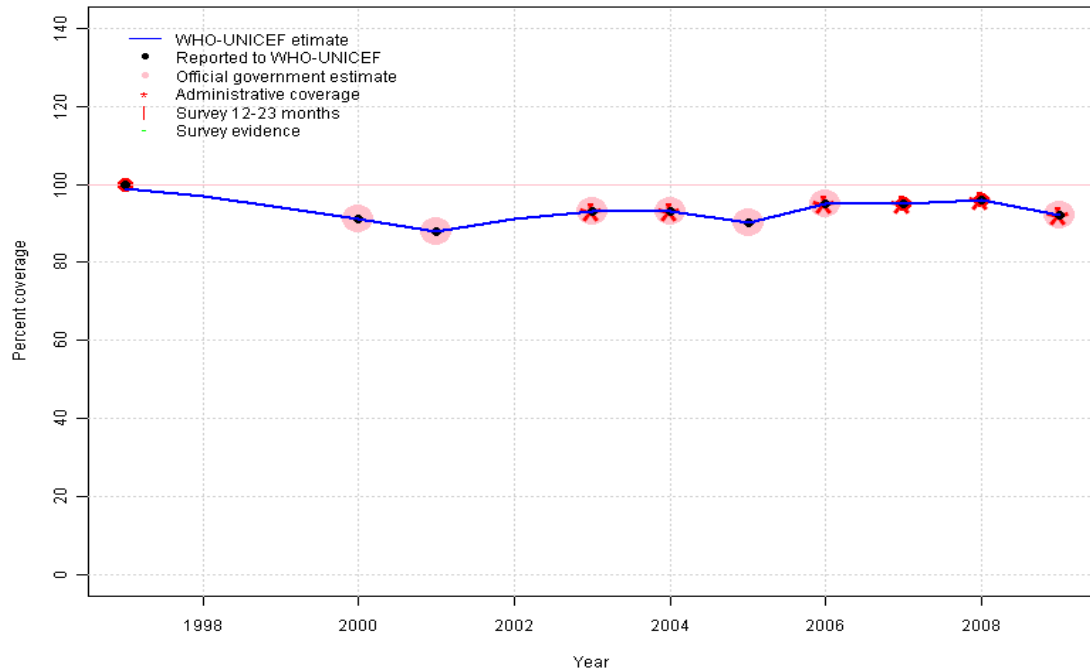
2008: Estimate based on reported data.

2009: Estimate based on reported data.

	1997	1998	1999	2000	2001	2002	2003	2004	2005	2006	2007	2008	2009
Estimate	99	98	97	95	91	94	97	99	95	97	97	98	96
Reported	100	NA	NA	95	91	NA	97	99	95	97	97	98	96
Official	NA	NA	NA	95	91	NA	97	99	95	97	NA	NA	NA
Administrative	NA	NA	NA	NA	NA	NA	NA	99	95	97	97	98	96
Survey	NA	NA	NA	NA	NA	NA	NA	NA	NA	NA	NA	NA	NA

Iceland - MCV

ISL - MCV

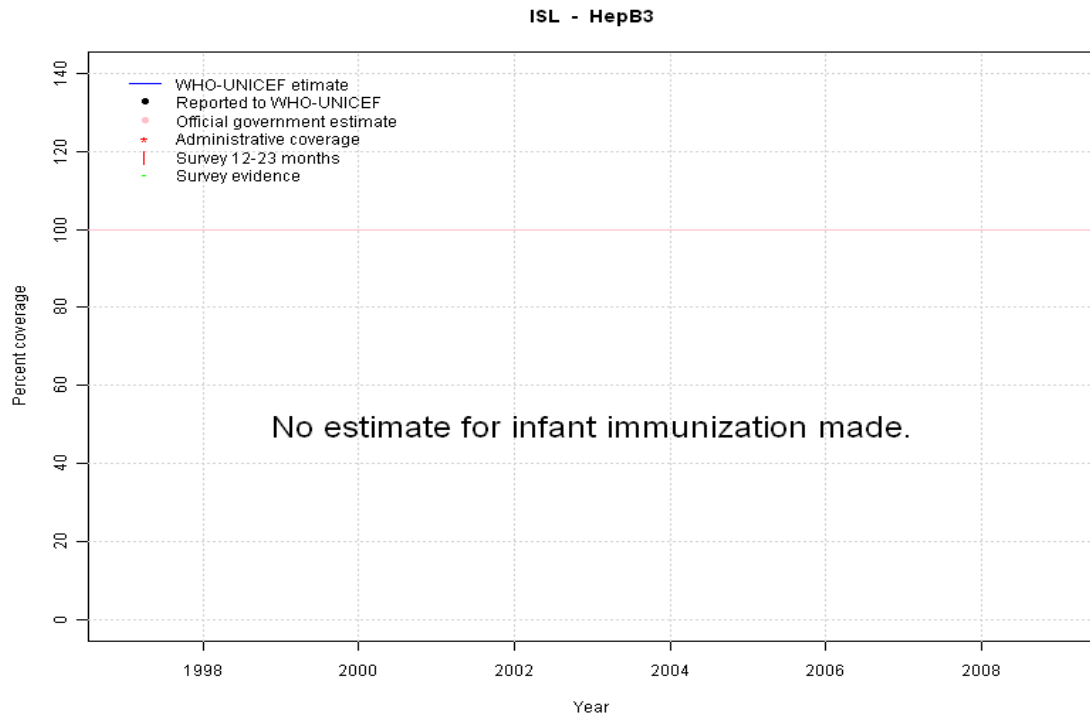


Description:

- 1997: Legacy estimate.
- 1998: Estimate based on trend in reported data. Missing or ignored reported value estimated by interpolation between reported values of 100 percent in 1997 and 91 percent in 2000.
- 1999: Estimate based on trend in reported data. Missing or ignored reported value estimated by interpolation between reported values of 100 percent in 1997 and 91 percent in 2000.
- 2000: Estimate based on reported data.
- 2001: Estimate based on reported data.
- 2002: Estimate based on trend in reported data. Missing or ignored reported value estimated by interpolation between reported values of 88 percent in 2001 and 93 percent in 2003.
- 2003: Estimate based on reported data.
- 2004: Estimate based on reported data.
- 2005: Estimate based on reported data.
- 2006: Estimate based on reported data.
- 2007: Estimate based on reported data.
- 2008: Estimate based on reported data.
- 2009: Estimate based on reported data.

	1997	1998	1999	2000	2001	2002	2003	2004	2005	2006	2007	2008	2009
Estimate	99	97	94	91	88	91	93	93	90	95	95	96	92
Reported	100	NA	NA	91	88	NA	93	93	90	95	95	96	92
Official	NA	NA	NA	91	88	NA	93	93	90	95	NA	NA	92
Administrative	NA	NA	NA	NA	NA	NA	93	93	NA	95	95	96	92
Survey	NA	NA	NA	NA	NA	NA	NA	NA	NA	NA	NA	NA	NA

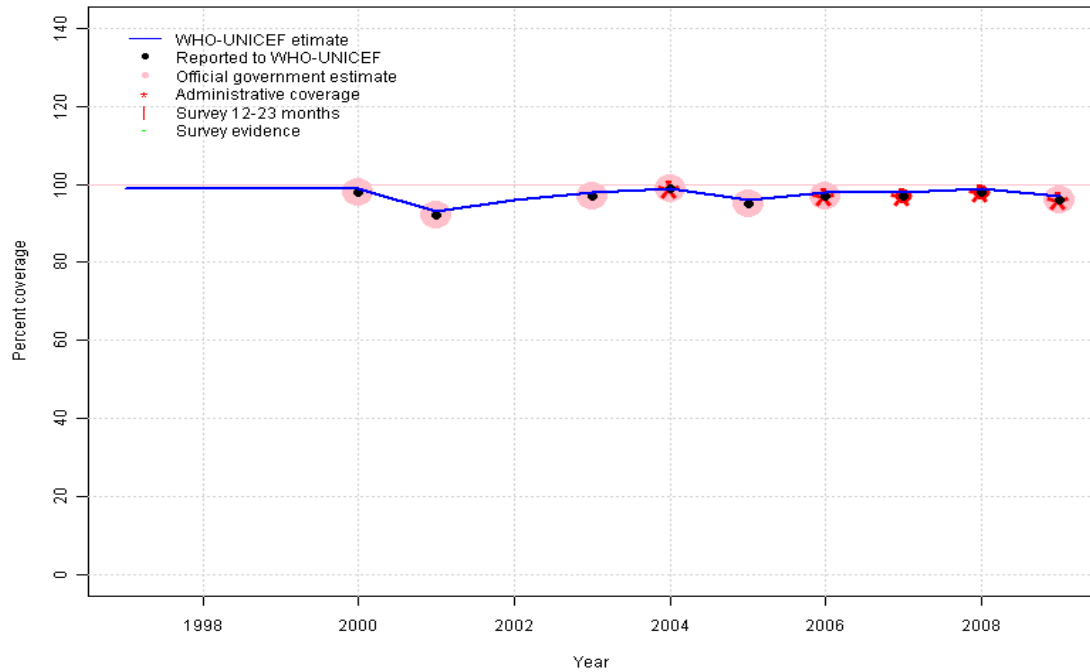
Iceland - HepB3



	1997	1998	1999	2000	2001	2002	2003	2004	2005	2006	2007	2008	2009
Estimate	NA	NA	NA	NA	NA	NA	NA	NA	NA	NA	NA	NA	NA
Reported	NA	NA	NA	NA	NA	NA	NA	NA	NA	NA	NA	NA	NA
Official	NA	NA	NA	NA	NA	NA	NA	NA	NA	NA	NA	NA	NA
Administrative	NA	NA	NA	NA	NA	NA	NA	NA	NA	NA	NA	NA	NA
Survey	NA	NA	NA	NA	NA	NA	NA	NA	NA	NA	NA	NA	NA

Iceland - Hib3

ISL - Hib3



	1997	1998	1999	2000	2001	2002	2003	2004	2005	2006	2007	2008	2009
Estimate	99	99	99	99	93	96	98	99	96	98	98	99	97
Reported	NA	NA	NA	98	92	NA	97	99	95	97	97	98	96
Official	NA	NA	NA	98	92	NA	97	99	95	97	NA	NA	96
Administrative	NA	NA	NA	NA	NA	NA	NA	99	NA	97	97	98	96
Survey	NA	NA	NA	NA	NA	NA	NA	NA	NA	NA	NA	NA	NA

Description:

1997: Legacy estimate.

1998: Estimate calibrated to 1997 level (99 percent) and reported coverage (98 percent).

1999: Estimate calibrated to 1997 level (99 percent) and reported coverage (98 percent).

2000: Estimate calibrated to 1997 level (99 percent) and reported coverage (98 percent).

2001: Estimate calibrated to 1997 level (99 percent) and reported coverage (92 percent).

2002: Estimate calibrated to 1997 level (99 percent) and reported coverage (95 percent).

2003: Estimate calibrated to 1997 level (99 percent) and reported coverage (97 percent).

2004: Estimate calibrated to 1997 level (99 percent) and reported coverage (99 percent).

2005: Estimate calibrated to 1997 level (99 percent) and reported coverage (95 percent).

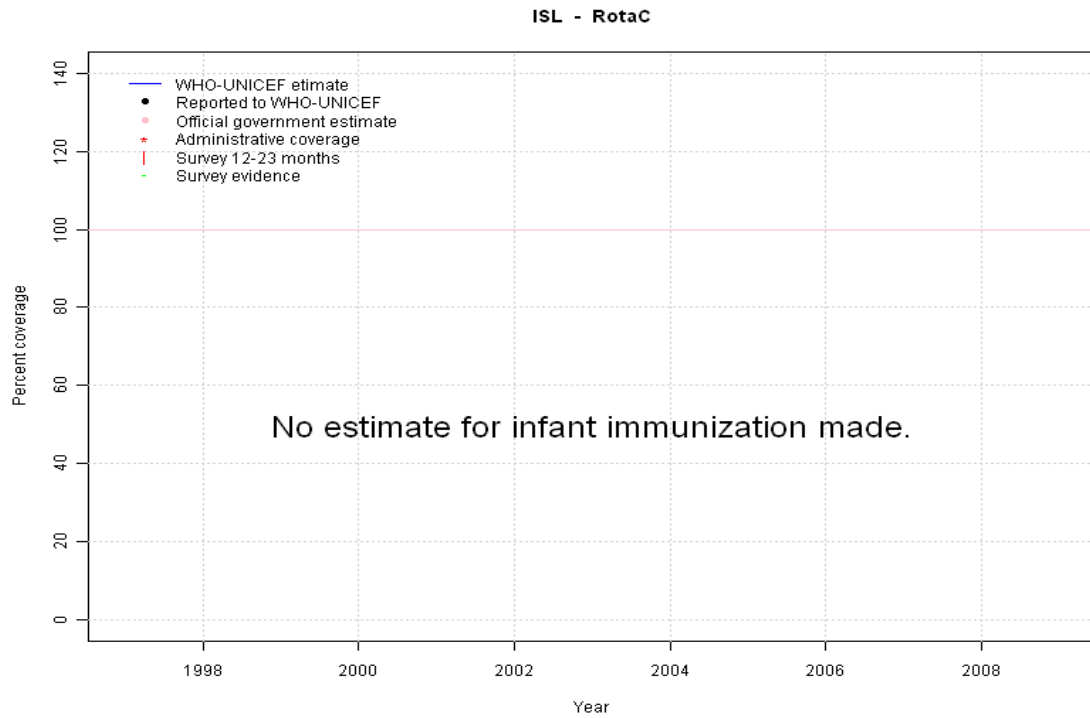
2006: Estimate calibrated to 1997 level (99 percent) and reported coverage (97 percent).

2007: Estimate calibrated to 1997 level (99 percent) and reported coverage (97 percent).

2008: Estimate calibrated to 1997 level (99 percent) and reported coverage (98 percent).

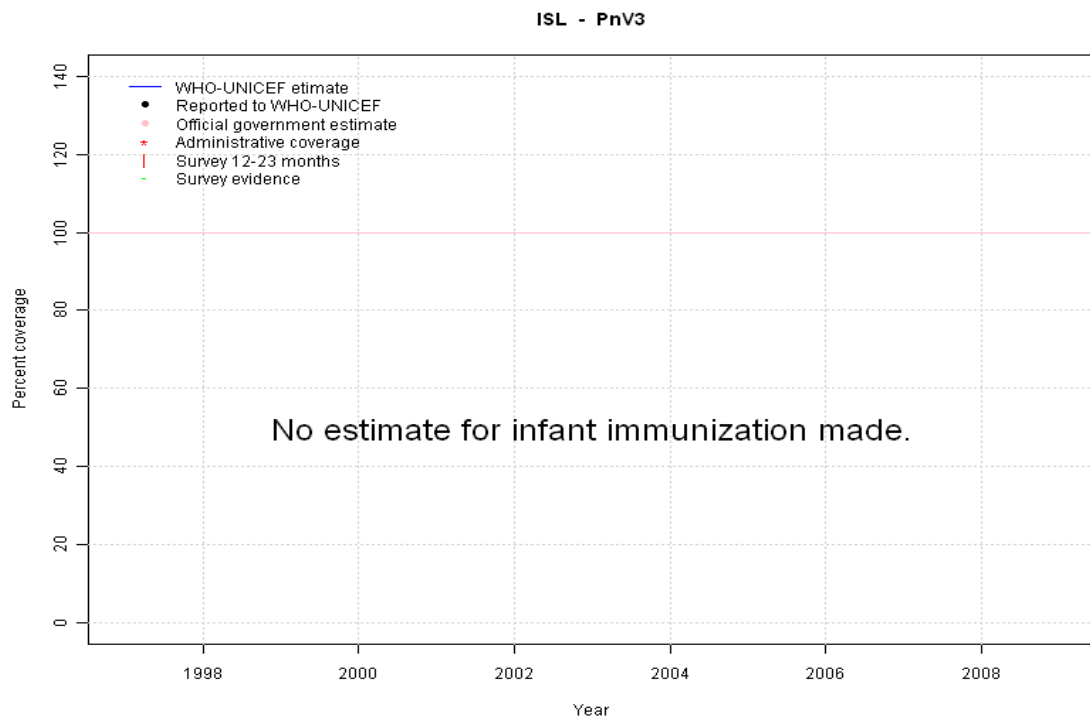
2009: Estimate calibrated to 1997 level (99 percent) and reported coverage (96 percent).

Iceland - RotaC



	1997	1998	1999	2000	2001	2002	2003	2004	2005	2006	2007	2008	2009
Estimate	NA	NA	NA	NA	NA	NA	NA	NA	NA	NA	NA	NA	NA
Reported	NA	NA	NA	NA	NA	NA	NA	NA	NA	NA	NA	NA	NA
Official	NA	NA	NA	NA	NA	NA	NA	NA	NA	NA	NA	NA	NA
Administrative	NA	NA	NA	NA	NA	NA	NA	NA	NA	NA	NA	NA	NA
Survey	NA	NA	NA	NA	NA	NA	NA	NA	NA	NA	NA	NA	NA

Iceland - PnV3



	1997	1998	1999	2000	2001	2002	2003	2004	2005	2006	2007	2008	2009
Estimate	NA	NA	NA	NA	NA	NA	NA	NA	NA	NA	NA	NA	NA
Reported	NA	NA	NA	NA	NA	NA	NA	NA	NA	NA	NA	NA	NA
Official	NA	NA	NA	NA	NA	NA	NA	NA	NA	NA	NA	NA	NA
Administrative	NA	NA	NA	NA	NA	NA	NA	NA	NA	NA	NA	NA	NA
Survey	NA	NA	NA	NA	NA	NA	NA	NA	NA	NA	NA	NA	NA

Further information and estimates for 1980-1996 are available at:

http://www.childinfo.org/immunization_countryreports.html

http://www.who.int/immunization_monitoring/routine/immunization_coverage/en/index4.html