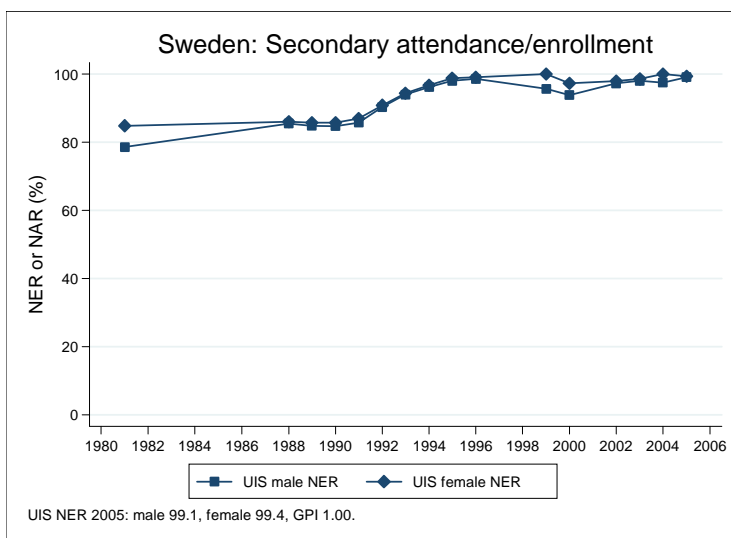
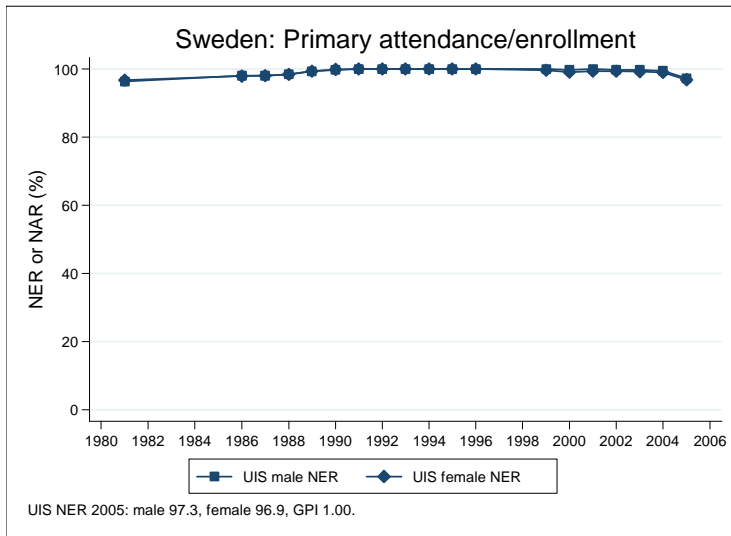
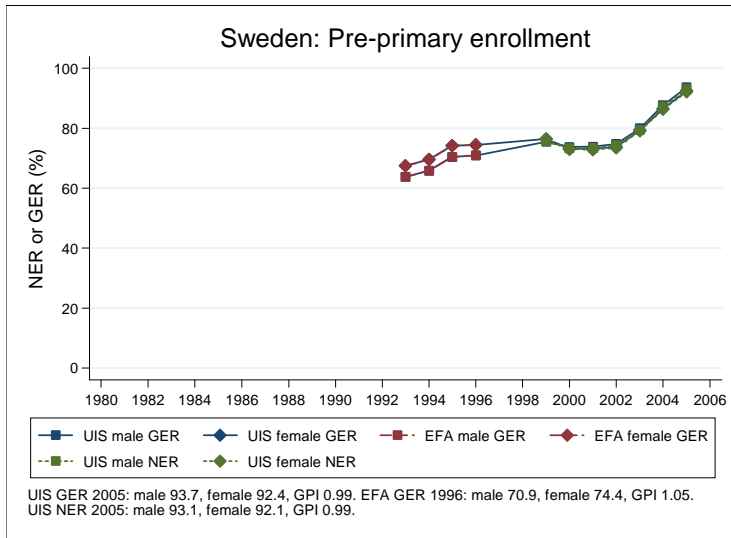
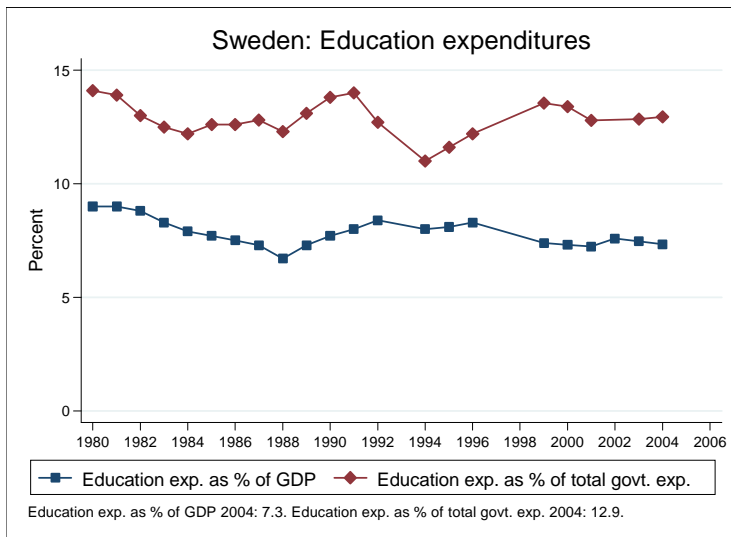
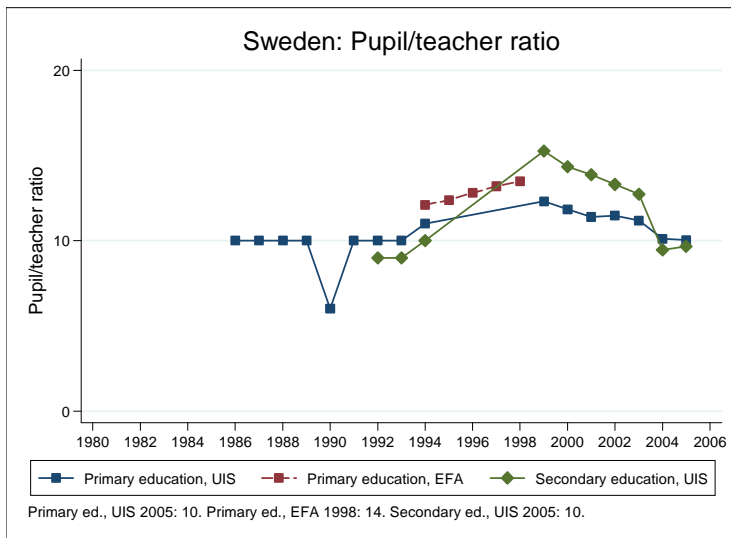
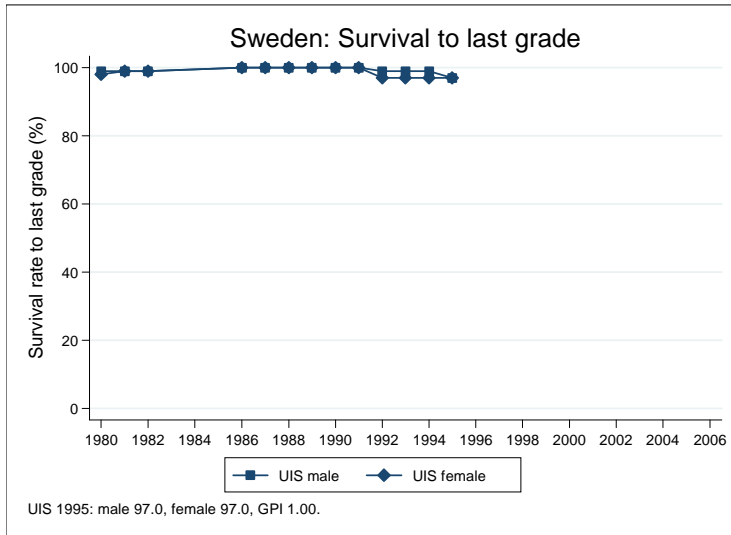


Education statistics: Sweden

UNICEF, Division of Policy and Practice, Statistics and Monitoring Section, www.childinfo.org, May 2008





Administrative data: UNESCO Institute for Statistics

Sweden

Population (1,000)	Total	Male	Female
Preschool age, 2006	350	180	170
Primary school age, 2006	656	336	320
Secondary school age, 2006	727	373	354
Total population, all ages, 2007	9119	4525	4594
Official school age (years)	Entrance age	Graduation age	Duration
Preschool, 2005	3	6	4
Primary school, 2005	7	12	6
Secondary school, 2005	13	18	6
Compulsory education, 2005	7	16	10
Net enrolment ratio (%)	Total	Male	Female
Preschool NER, 2005	92.6	93.1	92.1
Primary school NER, 2005	97.1	97.3	96.9
Secondary school NER, 2005	99.3	99.1	99.4
Gross enrolment ratio (%)	Total	Male	Female
Preschool GER, 2005	93.0	93.7	92.4
Primary school GER, 2005	97.5	97.6	97.4
Secondary school GER, 2005	103.1	103.4	102.8
Entrance and transition (%)	Total	Male	Female
Primary net intake rate, 2002	94.4	94.7	94.1
Primary gross intake rate, 2005	95.4	95.9	94.9
Primary entrants with ECCE			
Transition rate primary-secondary			
Repetition and completion	Total	Male	Female
Primary repetition rate (%)			
Secondary repetition rate (%)			
Survival rate to grade 5 (%), 1991	99.8	99.6	100.0
Survival rate to last primary grade (%)			
Primary completion rate (%), 1991	96.3	96.2	96.5
School life expectancy (years), 2005	12.0	12.1	12.0
Teaching staff	Pupil/teacher ratio	% trained teachers	% female teachers
Preschool, 2005	10.2		96.6
Primary school, 2005	10.1		81.3
Secondary school, 2005	9.7		57.6
Public expenditure per student as % of GDP per capita			
Primary school, 2004	25.7		
Secondary school, 2004	34.5		
Total public expenditure on education			
As % of GDP, 2004	7.3		
As % of total government expenditure, 2004	12.9		

Data sources:

Population: United Nations Population Division, *World Population Prospects: The 2006 Revision*, March 2007.

Education: UNESCO Institute for Statistics, Data Centre, <http://stats.uis.unesco.org/unesco/ReportFolders/ReportFolders.aspx>, January 2008.