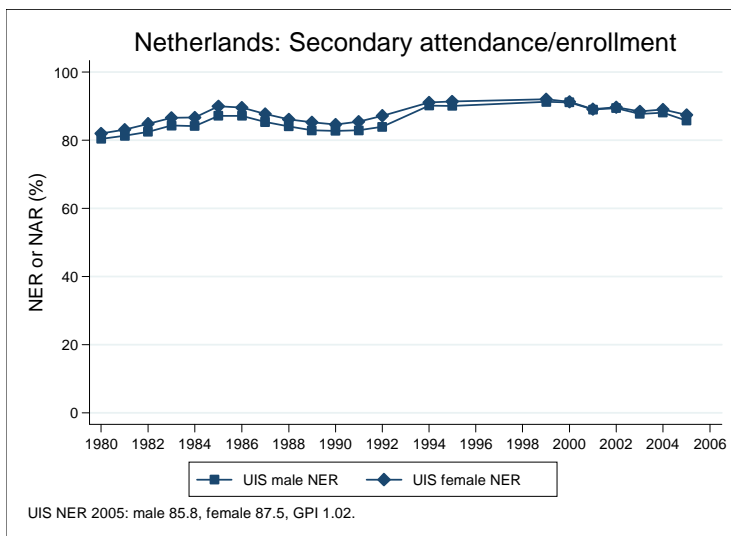
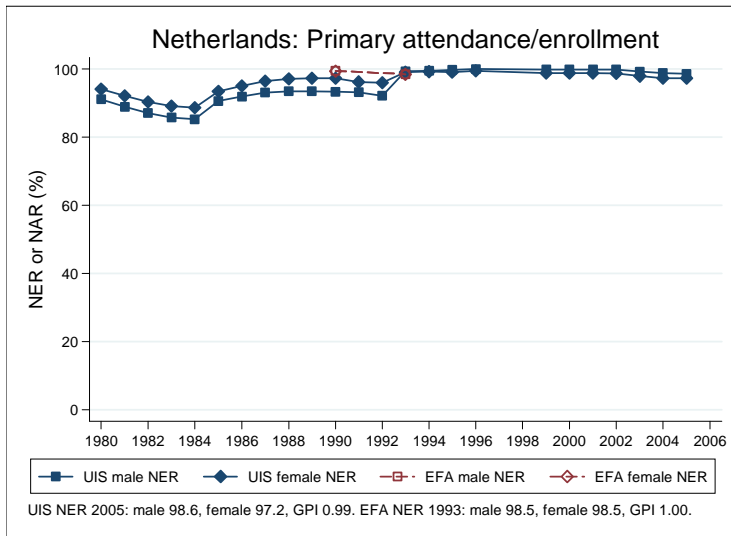
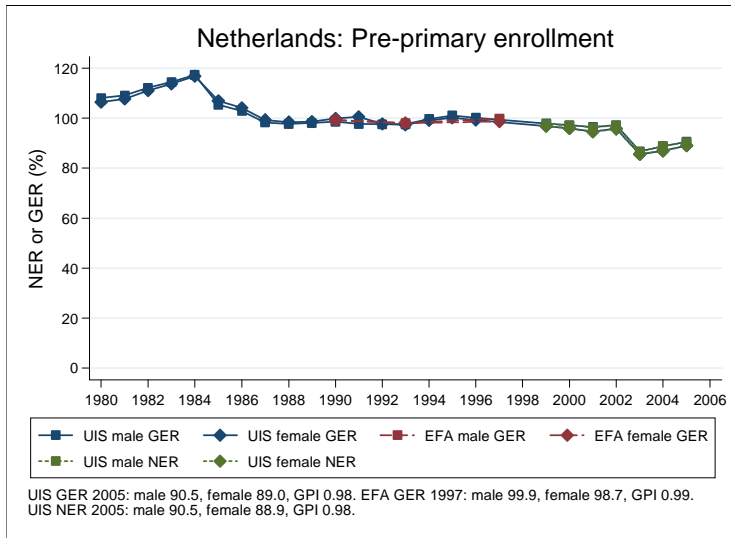
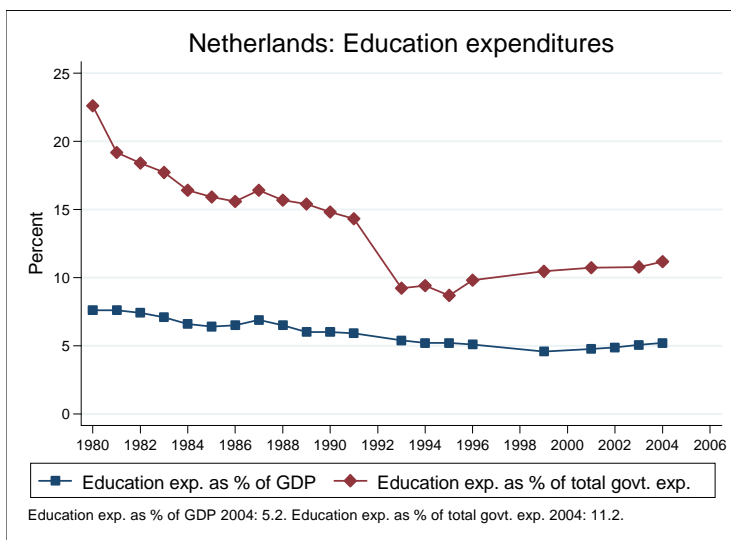
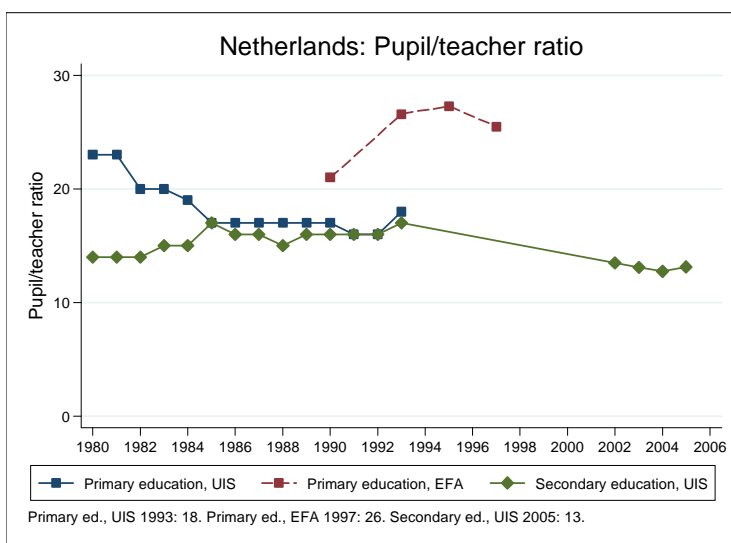
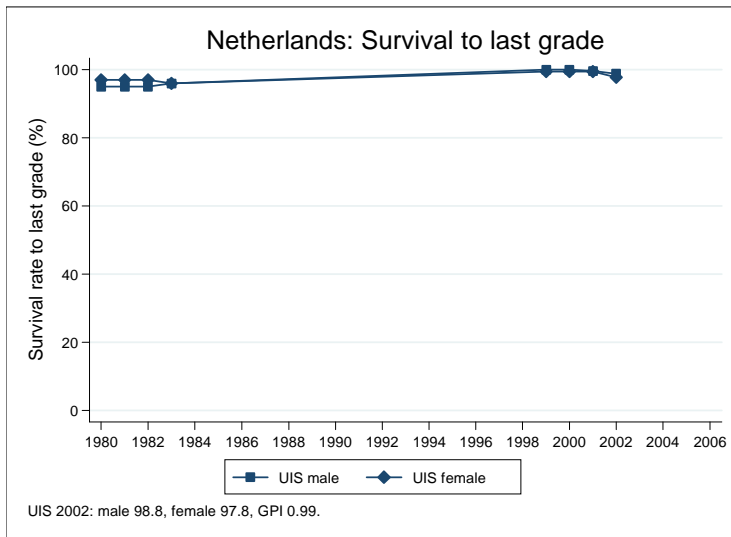


## Education statistics: Netherlands

UNICEF, Division of Policy and Practice, Statistics and Monitoring Section, www.childinfo.org, May 2008





## Administrative data: UNESCO Institute for Statistics

### Netherlands

| <b>Population (1,000)</b>                                    | <b>Total</b>               | <b>Male</b>               | <b>Female</b>            |
|--|----------------------------|---------------------------|--------------------------|
| Preschool age, 2006  | 395                        | 202                       | 193                      |
| Primary school age, 2006                                     | 1199                       | 613                       | 585                      |
| Secondary school age, 2006                                   | 1204                       | 615                       | 589                      |
| Total population, all ages, 2007                             | 16419                      | 8124                      | 8295                     |
| <b>Official school age (years)</b>                           | <b>Entrance age</b>        | <b>Graduation age</b>     | <b>Duration</b>          |
| Preschool, 2005  | 4                          | 5                         | 2                        |
| Primary school, 2005   | 6                          | 11                        | 6                        |
| Secondary school, 2005                                       | 12                         | 17                        | 6                        |
| Compulsory education, 2005                                   | 5                          | 17                        | 13                       |
| <b>Net enrolment ratio (%)</b>                               | <b>Total</b>               | <b>Male</b>               | <b>Female</b>            |
| Preschool NER, 2005  | 89.7                       | 90.5                      | 88.9                     |
| Primary school NER, 2005                                     | 97.9                       | 98.6                      | 97.2                     |
| Secondary school NER, 2005                                   | 86.6                       | 85.8                      | 87.5                     |
| <b>Gross enrolment ratio (%)</b>                             | <b>Total</b>               | <b>Male</b>               | <b>Female</b>            |
| Preschool GER, 2005  | 89.8                       | 90.5                      | 89.0                     |
| Primary school GER, 2005                                     | 106.5                      | 107.8                     | 105.2                    |
| Secondary school GER, 2005                                   | 118.0                      | 119.2                     | 116.7                    |
| <b>Entrance and transition (%)</b>                           | <b>Total</b>               | <b>Male</b>               | <b>Female</b>            |
| Primary net intake rate, 2003                                | 96.6                       | 97.4                      | 95.6                     |
| Primary gross intake rate, 2005                              | 100.4                      | 101.1                     | 99.6                     |
| Primary entrants with ECCE                                   |                            |                           |                          |
| Transition rate primary-secondary, 2003                      | 98.1                       | 96.4                      | 100.0                    |
| <b>Repetition and completion</b>                             | <b>Total</b>               | <b>Male</b>               | <b>Female</b>            |
| Primary repetition rate (%)                                  |                            |                           |                          |
| Secondary repetition rate (%), 2005                          | 4.6                        | 5.0                       | 4.1                      |
| Survival rate to grade 5 (%), 2004                           | 99.4                       | 98.9                      | 99.9                     |
| Survival rate to last primary grade (%), 2002                | 98.3                       | 98.8                      | 97.8                     |
| Primary completion rate (%), 2003                            | 99.6                       | 100.5                     | 98.6                     |
| School life expectancy (years), 2005                         | 13.5                       | 13.7                      | 13.4                     |
| <b>Teaching staff</b>  | <b>Pupil/teacher ratio</b> | <b>% trained teachers</b> | <b>% female teachers</b> |
| Preschool, 1991  | 17.2                       |                           | 100.0                    |
| Primary school, 1991   | 17.2                       |                           | 53.0                     |
| Secondary school, 2005                                       | 13.1                       |                           | 44.8                     |
| <b>Public expenditure per student as % of GDP per capita</b> |                            |                           |                          |
| Primary school, 2004   | 17.9                       |                           |                          |
| Secondary school, 2004                                       | 24.0                       |                           |                          |
| <b>Total public expenditure on education</b>                 |                            |                           |                          |
| As % of GDP, 2004  | 5.2                        |                           |                          |
| As % of total government expenditure, 2004                   | 11.2                       |                           |                          |

#### Data sources:

*Population:* United Nations Population Division, *World Population Prospects: The 2006 Revision*, March 2007.

*Education:* UNESCO Institute for Statistics, Data Centre, <http://stats.uis.unesco.org/unesco/ReportFolders/ReportFolders.aspx>, January 2008.