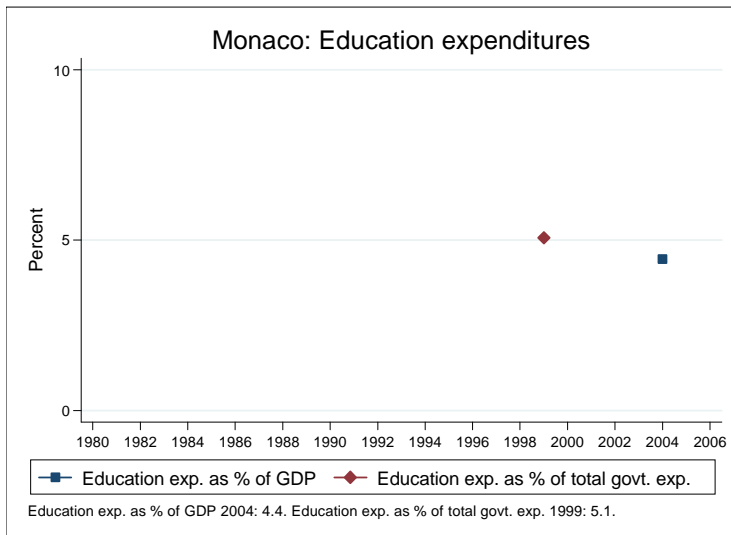
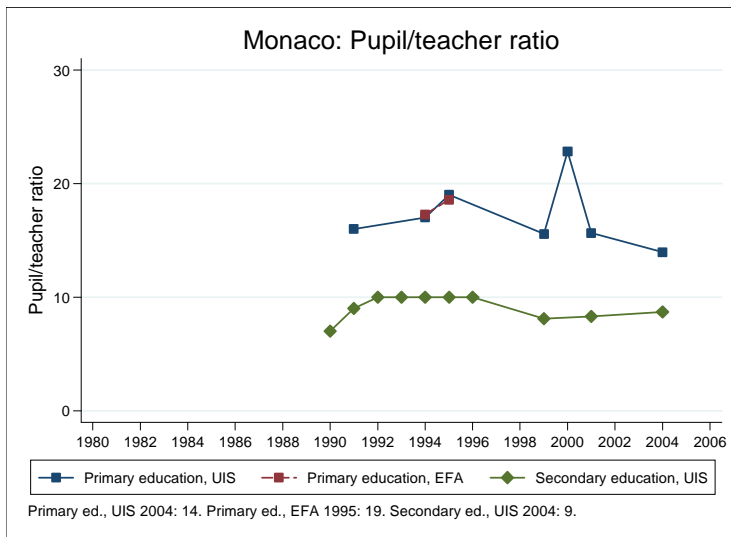
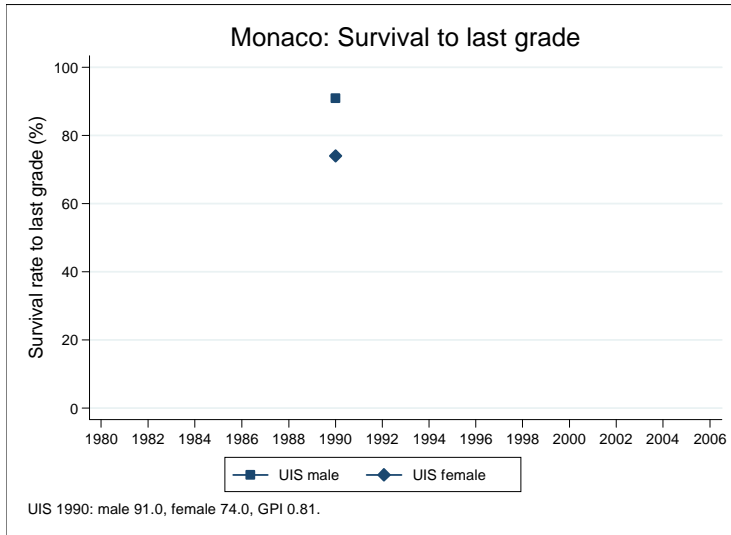


## Education statistics: Monaco

UNICEF, Division of Policy and Practice, Statistics and Monitoring Section, www.childinfo.org, May 2008



## Administrative data: UNESCO Institute for Statistics

### Monaco

| <b>Population (1,000)</b>                                    | <b>Total</b>               | <b>Male</b>               | <b>Female</b>            |
|--|----------------------------|---------------------------|--------------------------|
| Preschool age  |                            |                           |                          |
| Primary school age   |                            |                           |                          |
| Secondary school age   |                            |                           |                          |
| Total population, all ages                                   |                            |                           |                          |
| <b>Official school age (years)</b>                           | <b>Entrance age</b>        | <b>Graduation age</b>     | <b>Duration</b>          |
| Preschool, 2005  | 3                          | 5                         | 3                        |
| Primary school, 2005   | 6                          | 10                        | 5                        |
| Secondary school, 2005                                       | 11                         | 17                        | 7                        |
| Compulsory education, 2005                                   | 6                          | 15                        | 10                       |
| <b>Net enrolment ratio (%)</b>                               | <b>Total</b>               | <b>Male</b>               | <b>Female</b>            |
| Preschool NER  |                            |                           |                          |
| Primary school NER   |                            |                           |                          |
| Secondary school NER   |                            |                           |                          |
| <b>Gross enrolment ratio (%)</b>                             | <b>Total</b>               | <b>Male</b>               | <b>Female</b>            |
| Preschool GER  |                            |                           |                          |
| Primary school GER   |                            |                           |                          |
| Secondary school GER   |                            |                           |                          |
| <b>Entrance and transition (%)</b>                           | <b>Total</b>               | <b>Male</b>               | <b>Female</b>            |
| Primary net intake rate                                      |                            |                           |                          |
| Primary gross intake rate                                    |                            |                           |                          |
| Primary entrants with ECCE                                   |                            |                           |                          |
| Transition rate primary-secondary                            |                            |                           |                          |
| <b>Repetition and completion</b>                             | <b>Total</b>               | <b>Male</b>               | <b>Female</b>            |
| Primary repetition rate (%), 1991                            | 6.0                        | 6.4                       | 5.6                      |
| Secondary repetition rate (%)                                |                            |                           |                          |
| Survival rate to grade 5 (%), 1991                           | 82.9                       | 92.4                      | 74.5                     |
| Survival rate to last primary grade (%)                      |                            |                           |                          |
| Primary completion rate (%)                                  |                            |                           |                          |
| School life expectancy (years)                               |                            |                           |                          |
| <b>Teaching staff</b>  | <b>Pupil/teacher ratio</b> | <b>% trained teachers</b> | <b>% female teachers</b> |
| Preschool, 2004  | 16.6                       |                           | 100.0                    |
| Primary school, 2004   | 14.0                       |                           | 80.2                     |
| Secondary school, 2004                                       | 8.7                        |                           | 65.5                     |
| <b>Public expenditure per student as % of GDP per capita</b> |                            |                           |                          |
| Primary school   |                            |                           |                          |
| Secondary school   |                            |                           |                          |
| <b>Total public expenditure on education</b>                 |                            |                           |                          |
| As % of GDP, 2004  | 4.4                        |                           |                          |
| As % of total government expenditure, 1999                   | 5.1                        |                           |                          |

#### Data sources:

*Population:* United Nations Population Division, *World Population Prospects: The 2006 Revision*, March 2007.

*Education:* UNESCO Institute for Statistics, Data Centre, <http://stats.uis.unesco.org/unesco/ReportFolders/ReportFolders.aspx>, January 2008.