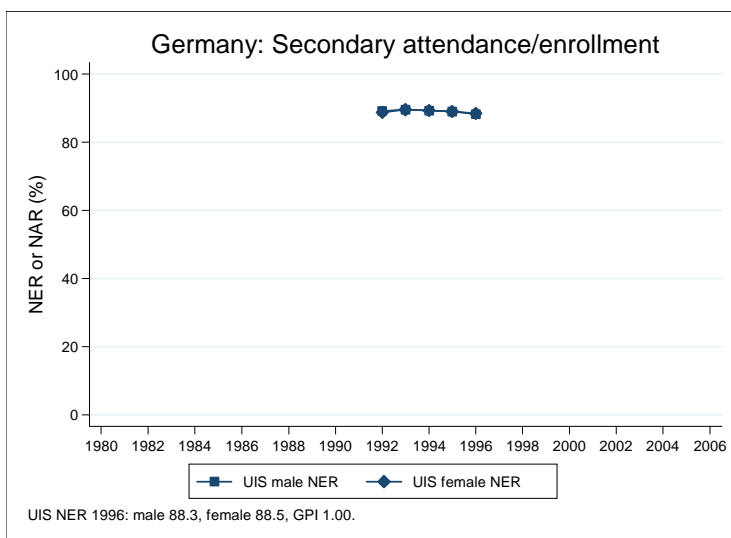
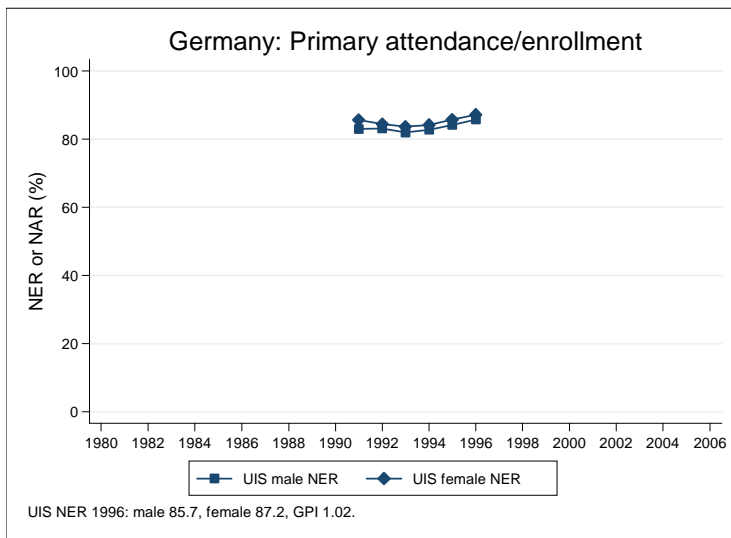
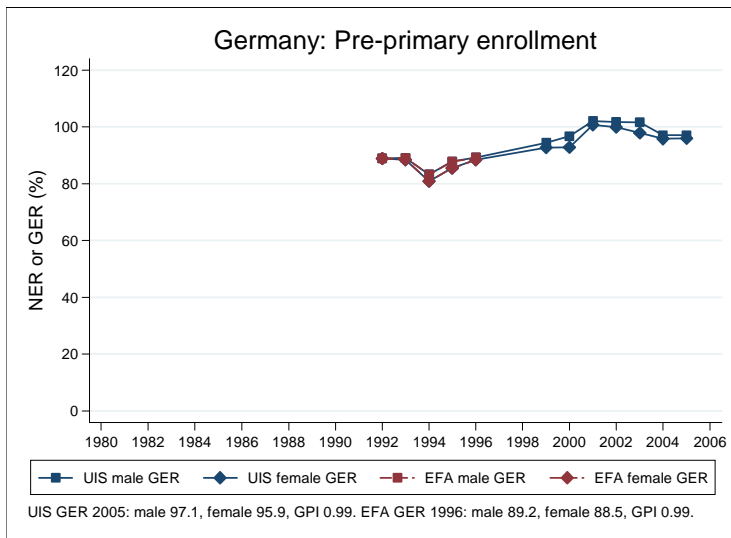
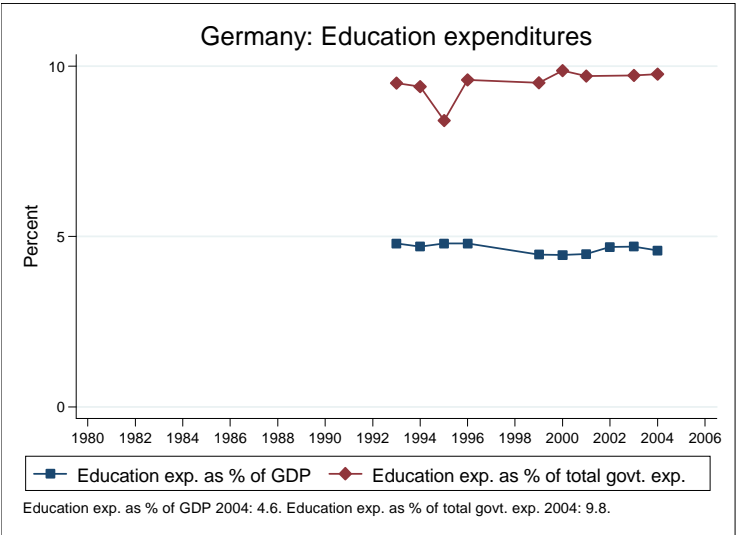
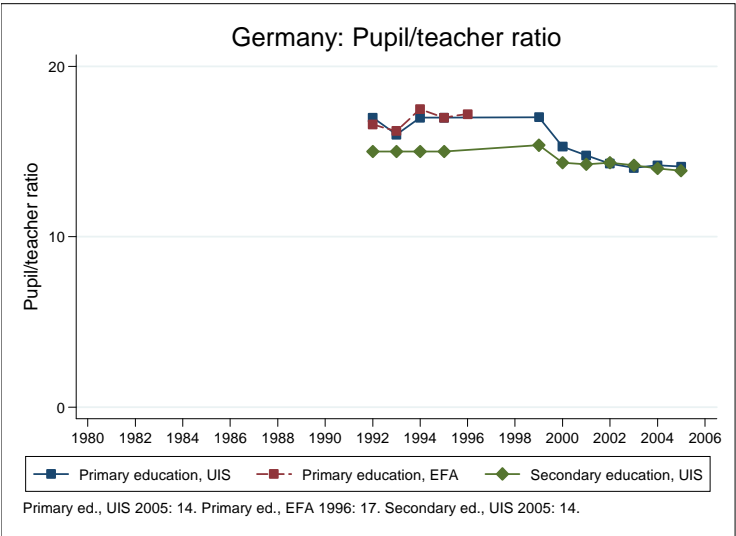
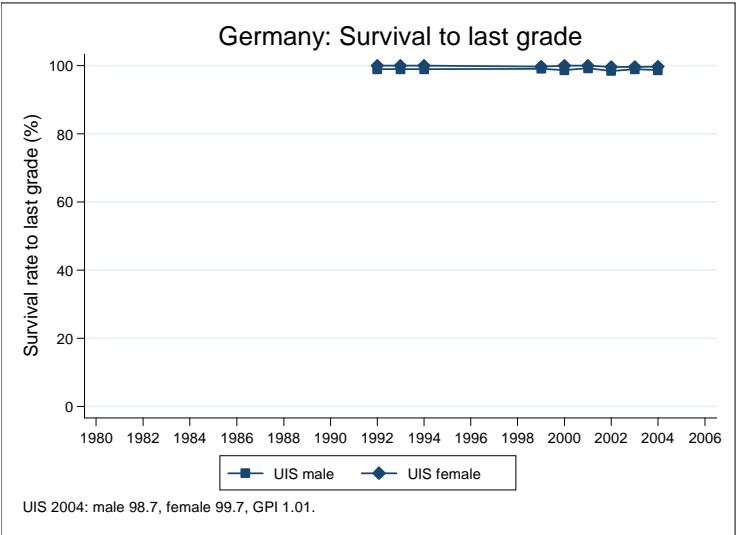


Education statistics: Germany

UNICEF, Division of Policy and Practice, Statistics and Monitoring Section, www.childinfo.org, May 2008





Administrative data: UNESCO Institute for Statistics

Germany

Population (1,000)	Total	Male	Female
Preschool age, 2006	2295	1178	1116
Primary school age, 2006	3224	1655	1569
Secondary school age, 2006	8128	4172	3956
Total population, all ages, 2007	82599	40390	42210
Official school age (years)	Entrance age	Graduation age	Duration
Preschool, 2005	3	5	3
Primary school, 2005	6	9	4
Secondary school, 2005	10	18	9
Compulsory education, 2005	6	18	13
Net enrolment ratio (%)	Total	Male	Female
Preschool NER			
Primary school NER, 1991	84.3	83.0	85.6
Secondary school NER			
Gross enrolment ratio (%)	Total	Male	Female
Preschool GER, 2005	96.5	97.1	95.9
Primary school GER, 2005	101.4	101.3	101.4
Secondary school GER, 2005	100.3	101.2	99.3
Entrance and transition (%)	Total	Male	Female
Primary net intake rate			
Primary gross intake rate, 2005	103.2	103.5	103.0
Primary entrants with ECCE			
Transition rate primary-secondary, 2004	99.1	99.2	99.0
Repetition and completion	Total	Male	Female
Primary repetition rate (%), 2005	1.4	1.5	1.3
Secondary repetition rate (%), 2005	3.0	3.4	2.5
Survival rate to grade 5 (%)			
Survival rate to last primary grade (%), 2004	99.2	98.7	99.7
Primary completion rate (%), 2005	94.6	94.5	94.7
School life expectancy (years), 2005	13.0	13.0	12.9
Teaching staff	Pupil/teacher ratio	% trained teachers	% female teachers
Preschool, 2005	11.8		98.3
Primary school, 2005	14.1		83.7
Secondary school, 2005	13.9		56.0
Public expenditure per student as % of GDP per capita			
Primary school, 2004	16.3		
Secondary school, 2004	21.7		
Total public expenditure on education			
As % of GDP, 2004	4.6		
As % of total government expenditure, 2004	9.8		

Data sources:

Population: United Nations Population Division, *World Population Prospects: The 2006 Revision*, March 2007.

Education: UNESCO Institute for Statistics, Data Centre, <http://stats.uis.unesco.org/unesco/ReportFolders/ReportFolders.aspx>, January 2008.