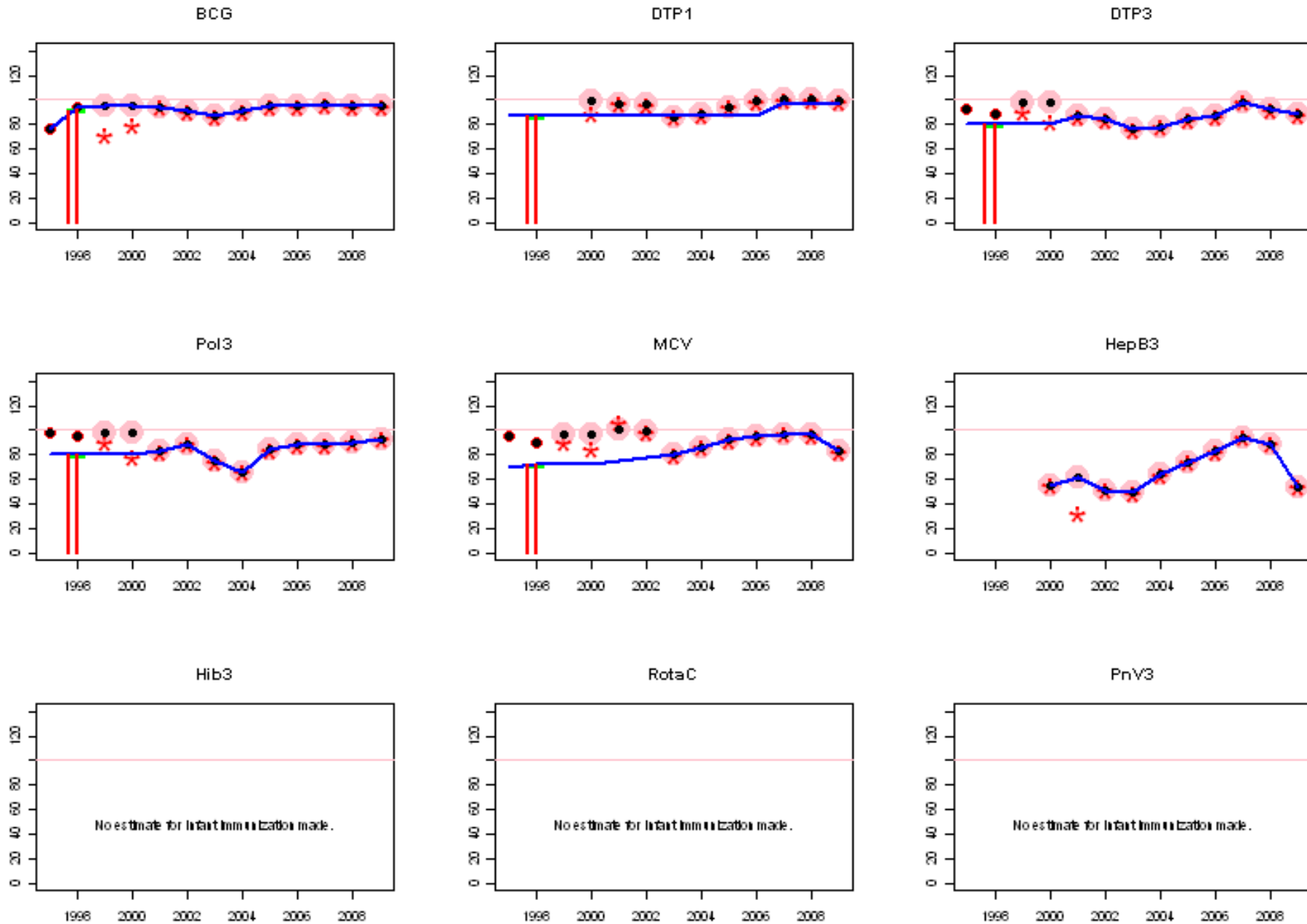
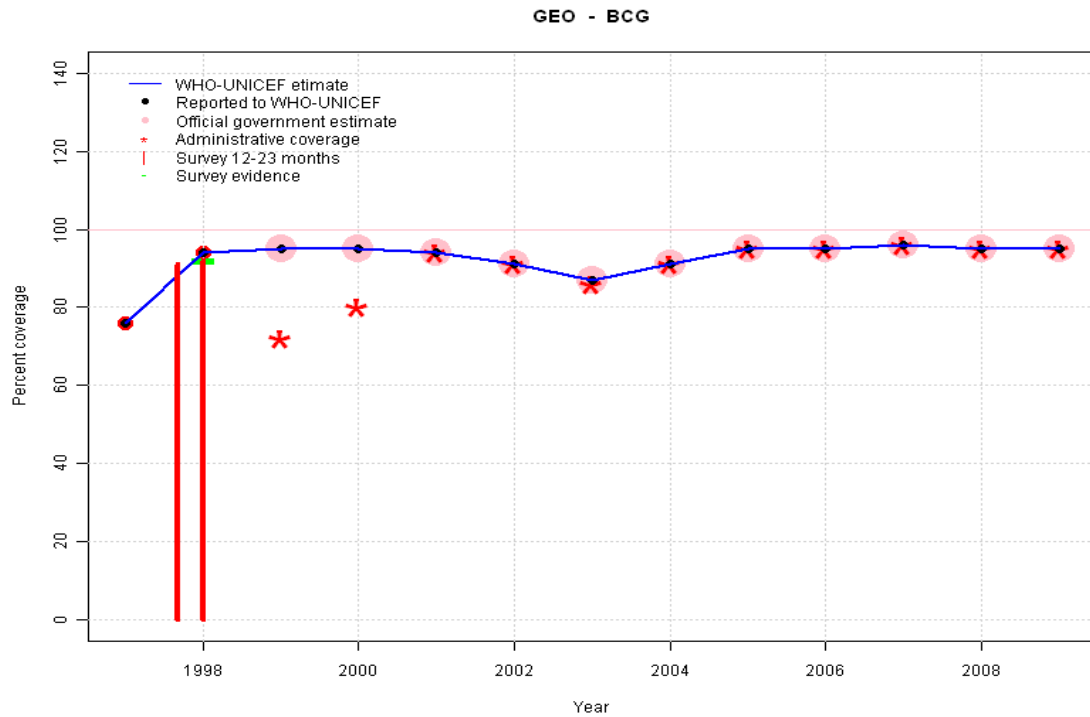


Georgia: WHO and UNICEF estimates of immunization coverage, 1997 - 2009



Georgia - BCG

Description:

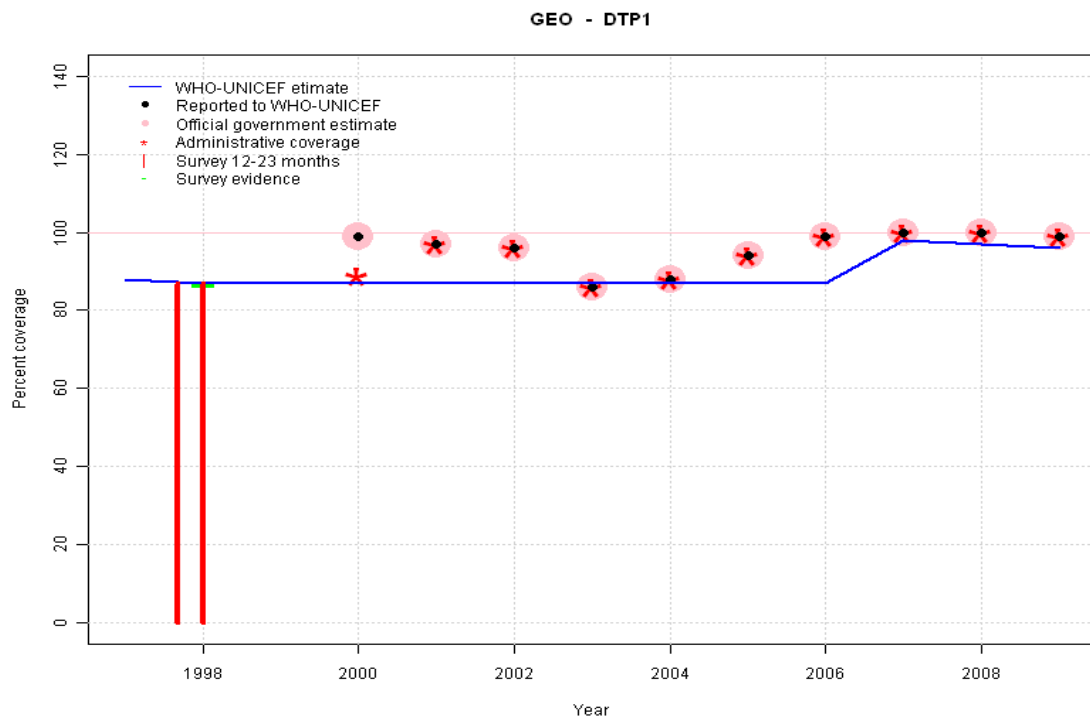


1997: Legacy estimate.
 1998: Estimate based on reported data (94 percent) confirmed by survey (92 percent). 2 surveys, results = 91, 92, mean = 92 percent.
 1999: Estimate based on reported data.
 2000: Estimate based on reported data.
 2001: Estimate based on reported data.
 2002: Estimate based on reported data.
 2003: Estimate based on reported data.
 2004: Estimate based on reported data.
 2005: Estimate based on reported data.
 2006: Estimate based on reported data.
 2007: Estimate based on reported data.
 2008: Estimate based on reported data.
 2009: Estimate based on reported data.

	1997	1998	1999	2000	2001	2002	2003	2004	2005	2006	2007	2008	2009
Estimate	76	94	95	95	94	91	87	91	95	95	96	95	95
Reported	76	94	95	95	94	91	87	91	95	95	96	95	95
Official	NA	NA	95	95	94	91	87	91	95	95	96	95	95
Administrative	NA	NA	72	80	94	91	86	91	95	95	96	95	95
Survey	NA	92	NA	NA	NA	NA	NA	NA	NA	NA	NA	NA	NA

Georgia - DTP1

Description:



1997: Legacy estimate.

1998: Estimate based on survey results. Reported data (99 percent) not consistent with survey results (87 percent). 2 surveys, results = 87, 87, mean = 87 percent.

1999: Estimate extrapolated from 1998 level (87 percent).

2000: Estimate extrapolated from 1998 level (87 percent).

2001: Estimate extrapolated from 1998 level (87 percent).

2002: Estimate extrapolated from 1998 level (87 percent).

2003: Estimate extrapolated from 1998 level (87 percent).

2004: Estimate extrapolated from 1998 level (87 percent).

2005: Estimate extrapolated from 1998 level (87 percent).

2006: Estimate extrapolated from 1998 level (87 percent).

2007: Estimated DTP3 greater than estimated DTP1; DTP1 estimate based on the relationship between DTP1 and DTP3 from 282 surveys.

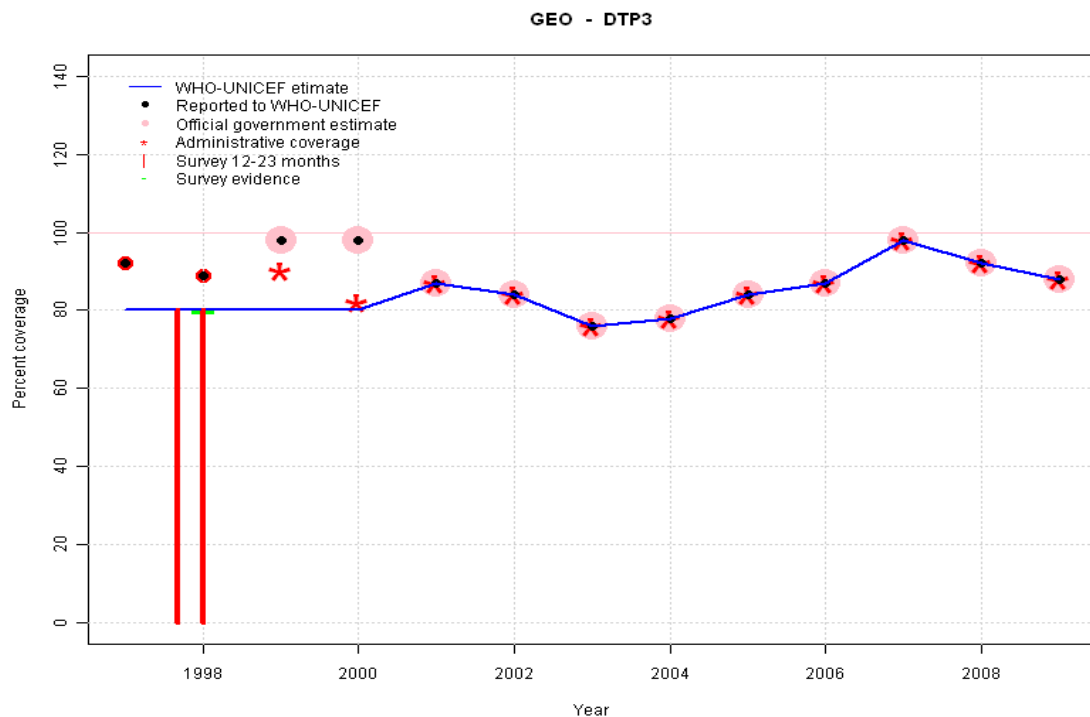
2008: Estimated DTP3 greater than estimated DTP1; DTP1 estimate based on the relationship between DTP1 and DTP3 from 282 surveys.

2009: Estimated DTP3 greater than estimated DTP1; DTP1 estimate based on the relationship between DTP1 and DTP3 from 282 surveys.

	1997	1998	1999	2000	2001	2002	2003	2004	2005	2006	2007	2008	2009
Estimate	88	87	87	87	87	87	87	87	87	87	98	97	96
Reported	NA	NA	NA	99	97	96	86	88	94	99	100	100	99
Official	NA	NA	NA	99	97	96	86	88	94	99	100	100	99
Administrative	NA	NA	NA	89	97	96	86	88	94	99	100	100	99
Survey	NA	87	NA	NA	NA	NA	NA	NA	NA	NA	NA	NA	NA

Georgia - DTP3

Description:

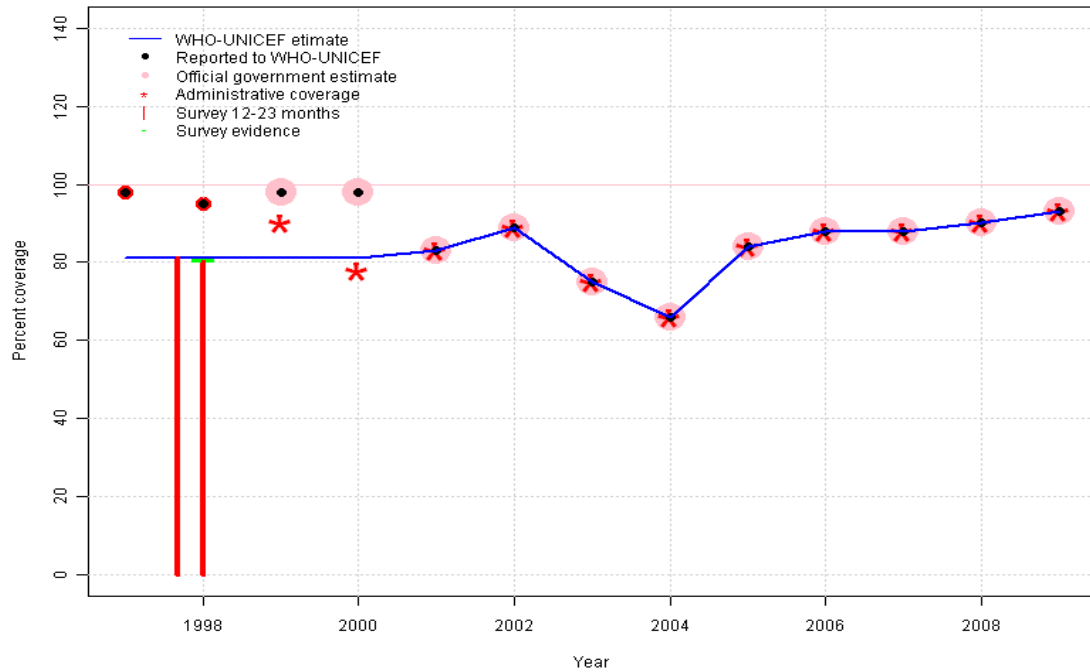


- 1997: Legacy estimate.
- 1998: Estimate based on survey. Survey does not support reported for other anti-gens.
- 1999: Estimate interpolated between 1998 and 2000 estimates.
- 2000: Estimate based on 1998 survey results. Reported data includes immunizations given after 12 months of age.
- 2001: Estimate based on reported data which includes only timely doses.
- 2002: Estimate based on reported data.
- 2003: Estimate based on reported data.
- 2004: Estimate based on reported data.
- 2005: Estimate based on reported data.
- 2006: Estimate based on reported data.
- 2007: Estimate based on reported data.
- 2008: Estimate based on reported data.
- 2009: Estimate based on reported data.

	1997	1998	1999	2000	2001	2002	2003	2004	2005	2006	2007	2008	2009
Estimate	80	80	80	80	87	84	76	78	84	87	98	92	88
Reported	92	89	98	98	87	84	76	78	84	87	98	92	88
Official	NA	NA	98	98	87	84	76	78	84	87	98	92	88
Administrative	NA	NA	90	82	87	84	76	78	84	87	98	92	88
Survey	NA	80	NA	NA	NA	NA	NA	NA	NA	NA	NA	NA	NA

Georgia - Pol3

GEO - Pol3



Description:

1997: Legacy estimate.

1998: Estimate based on survey results. Reported data (95 percent) not consistent with survey results (81 percent). 2 surveys, results = 81, 80, mean = 81 percent.

1999: Estimate interpolated between 1998 and 2000 estimates.

2000: Estimate based on 1998 survey results. Reported data includes immunizations given after 12 months of age.

2001: Estimate based on reported data which includes only timely doses.

2002: Estimate based on reported data.

2003: Estimate based on reported data.

2004: Estimate based on reported data.

2005: Estimate based on reported data.

2006: Estimate based on reported data.

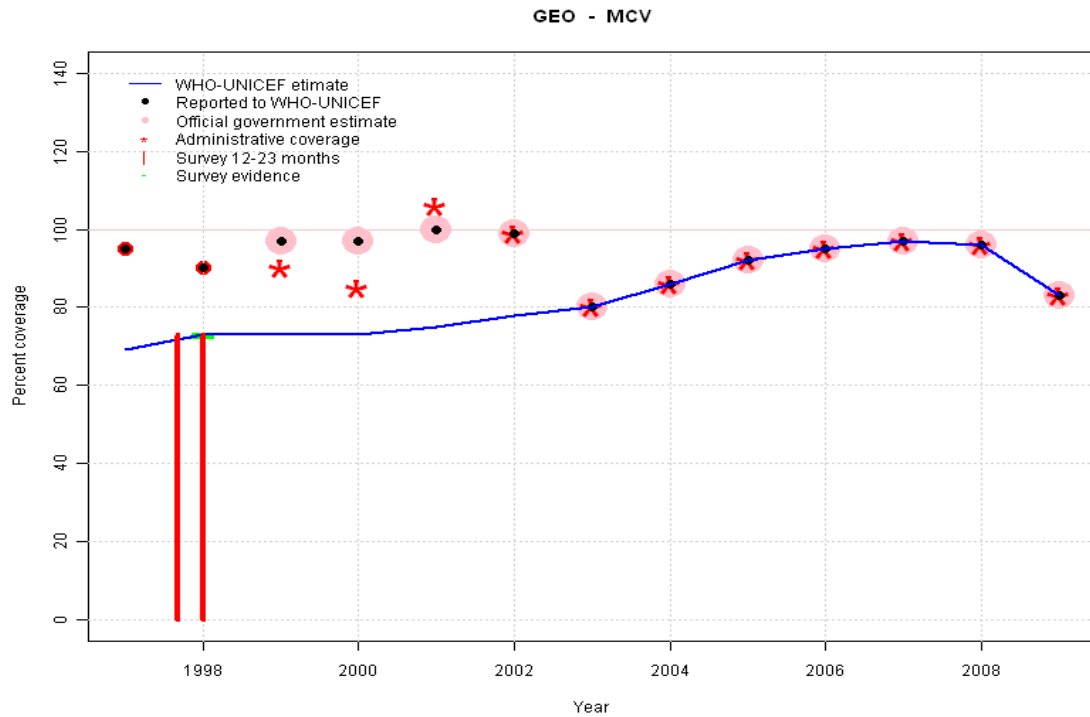
2007: Estimate based on reported data.

2008: Estimate based on reported data.

2009: Estimate based on reported data.

	1997	1998	1999	2000	2001	2002	2003	2004	2005	2006	2007	2008	2009
Estimate	81	81	81	81	83	89	75	66	84	88	88	90	93
Reported	98	95	98	98	83	89	75	66	84	88	88	90	93
Official	NA	NA	98	98	83	89	75	66	84	88	88	90	93
Administrative	NA	NA	90	78	83	89	75	66	84	88	88	90	93
Survey	NA	81	NA	NA	NA	NA	NA	NA	NA	NA	NA	NA	NA

Georgia - MCV



	1997	1998	1999	2000	2001	2002	2003	2004	2005	2006	2007	2008	2009
Estimate	69	73	73	73	75	78	80	86	92	95	97	96	83
Reported	95	90	97	97	100	99	80	86	92	95	97	96	83
Official	NA	NA	97	97	100	99	80	86	92	95	97	96	83
Administrative	NA	NA	90	85	106	99	80	86	92	95	97	96	83
Survey	NA	73	NA	NA	NA	NA	NA	NA	NA	NA	NA	NA	NA

Description:

1997: Legacy estimate.

1998: Estimate based on survey results. Reported data (90 percent) not consistent with survey results (73 percent). 2 surveys, results = 73, 73, mean = 73 percent.

1999: Estimate interpolated between 1998 and 2000 estimates.

2000: Estimate based on 1998 survey results. Reported data includes immunizations given after 12 months of age.

2001: Estimate interpolated between 2000 and 2003 estimates. 2001 reported data (100 percent) ignored by working group. Estimate based on 1998 survey results. Reported data likely includes doses administered during campaign.

2002: Estimate interpolated between 2000 and 2003 estimates. 2002 reported data (99 percent) ignored by working group. Estimate based on 1998 survey results. Reported data likely includes doses administered during campaign.

2003: Estimate based on 2003 reported data which includes only timely doses.

2004: Estimate based on reported data.

2005: Estimate based on reported data.

2006: Estimate based on reported data.

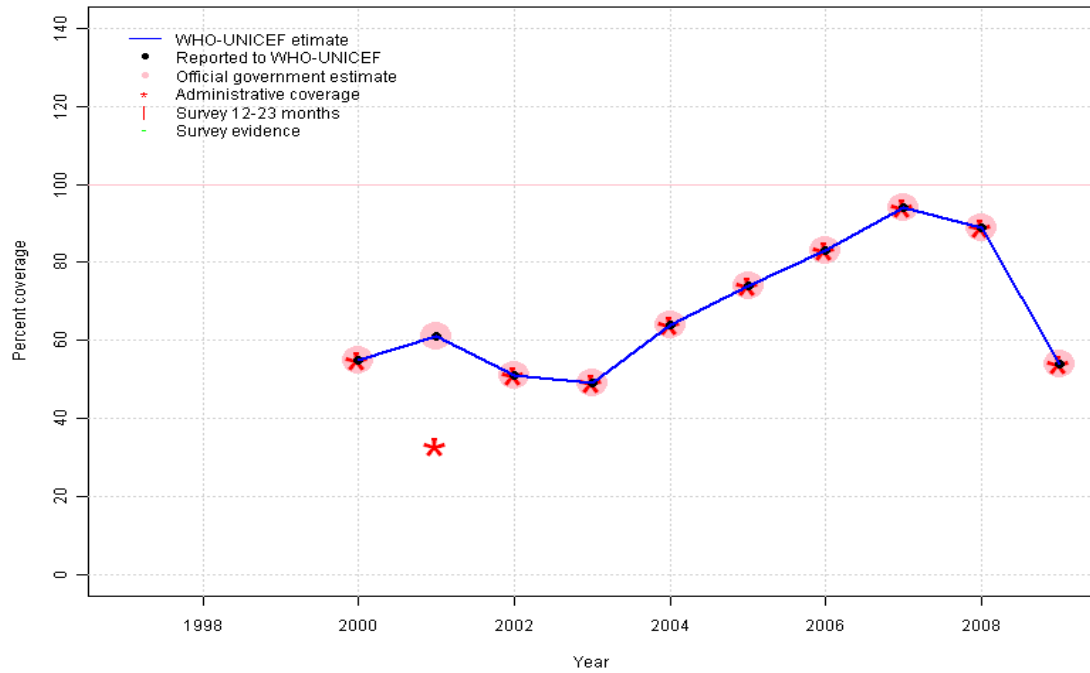
2007: Estimate based on reported data.

2008: Estimate based on reported data.

2009: Estimate based on reported data. Decline in 2009 is due to 3 months (March - May) vaccine shortage in 59 rayons.

Georgia - HepB3

GEO - HepB3

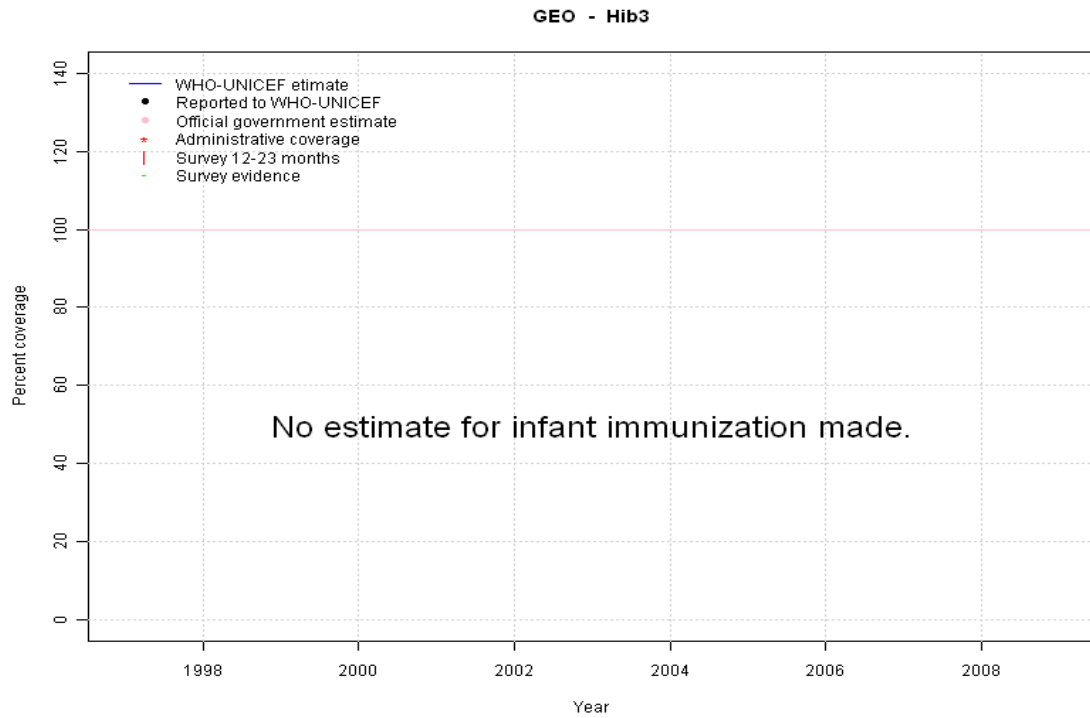


Description:

- 2000: Estimate based on reported data. HepB partially introduced in 2000 nationally in 2001 reporting started in 2000.
- 2001: Estimate based on reported data.
- 2002: Estimate based on reported data.
- 2003: Estimate based on reported data.
- 2004: Estimate based on reported data.
- 2005: Estimate based on reported data.
- 2006: Estimate based on reported data.
- 2007: Estimate based on reported data.
- 2008: Estimate based on reported data.
- 2009: Estimate based on reported data. Decline in 2009 is due to 3 months (Jan - March) vaccine shortage in 56 rayons.

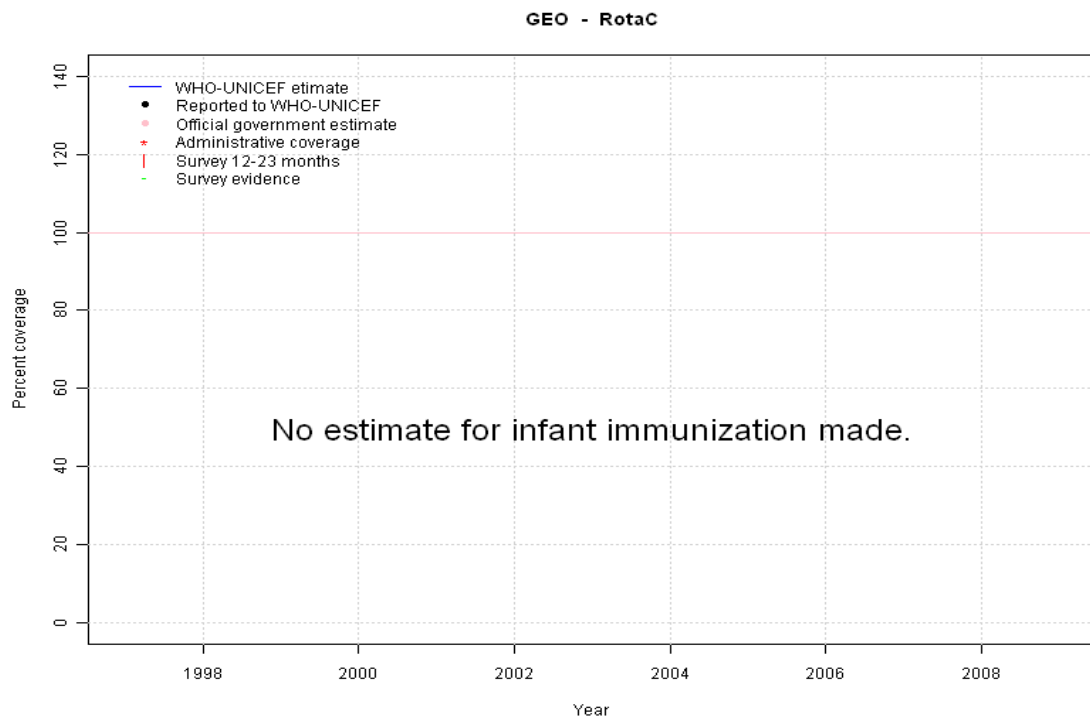
	1997	1998	1999	2000	2001	2002	2003	2004	2005	2006	2007	2008	2009
Estimate	NA	NA	NA	55	61	51	49	64	74	83	94	89	54
Reported	NA	NA	NA	55	61	51	49	64	74	83	94	89	54
Official	NA	NA	NA	55	61	51	49	64	74	83	94	89	54
Administrative	NA	NA	NA	55	33	51	49	64	74	83	94	89	54
Survey	NA	NA	NA	NA	NA	NA	NA	NA	NA	NA	NA	NA	NA

Georgia - Hib3



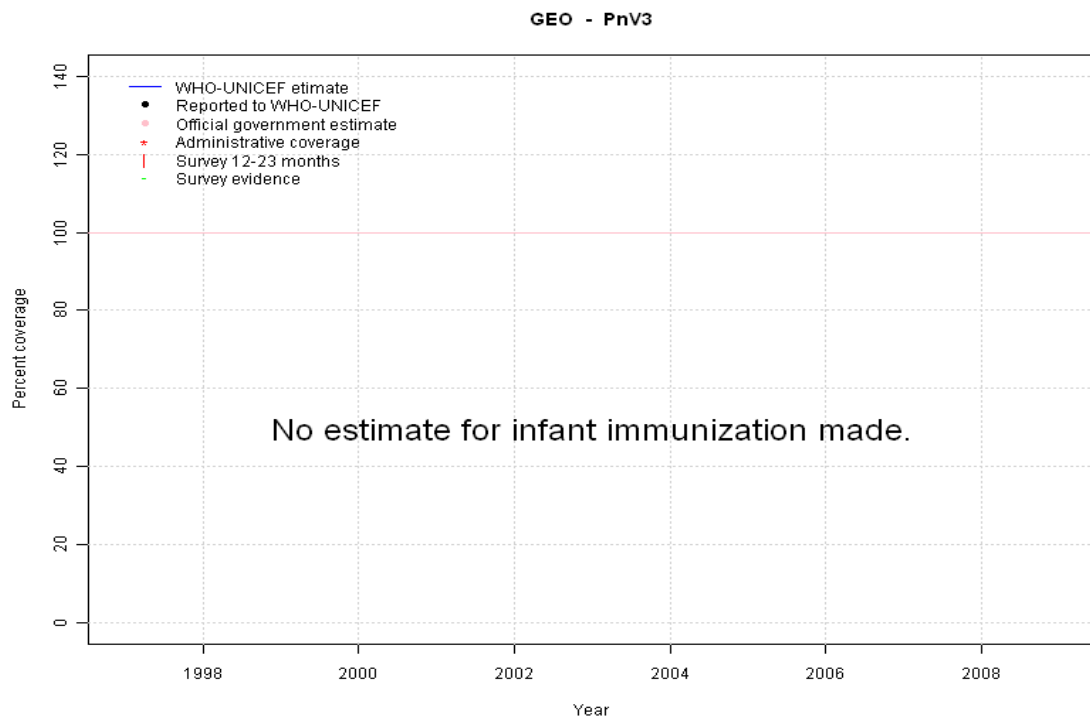
	1997	1998	1999	2000	2001	2002	2003	2004	2005	2006	2007	2008	2009
Estimate	NA	NA	NA	NA	NA	NA	NA	NA	NA	NA	NA	NA	NA
Reported	NA	NA	NA	NA	NA	NA	NA	NA	NA	NA	NA	NA	NA
Official	NA	NA	NA	NA	NA	NA	NA	NA	NA	NA	NA	NA	NA
Administrative	NA	NA	NA	NA	NA	NA	NA	NA	NA	NA	NA	NA	NA
Survey	NA	NA	NA	NA	NA	NA	NA	NA	NA	NA	NA	NA	NA

Georgia - RotaC



	1997	1998	1999	2000	2001	2002	2003	2004	2005	2006	2007	2008	2009
Estimate	NA	NA	NA	NA	NA	NA	NA	NA	NA	NA	NA	NA	NA
Reported	NA	NA	NA	NA	NA	NA	NA	NA	NA	NA	NA	NA	NA
Official	NA	NA	NA	NA	NA	NA	NA	NA	NA	NA	NA	NA	NA
Administrative	NA	NA	NA	NA	NA	NA	NA	NA	NA	NA	NA	NA	NA
Survey	NA	NA	NA	NA	NA	NA	NA	NA	NA	NA	NA	NA	NA

Georgia - PnV3



	1997	1998	1999	2000	2001	2002	2003	2004	2005	2006	2007	2008	2009
Estimate	NA	NA	NA	NA	NA	NA	NA	NA	NA	NA	NA	NA	NA
Reported	NA	NA	NA	NA	NA	NA	NA	NA	NA	NA	NA	NA	NA
Official	NA	NA	NA	NA	NA	NA	NA	NA	NA	NA	NA	NA	NA
Administrative	NA	NA	NA	NA	NA	NA	NA	NA	NA	NA	NA	NA	NA
Survey	NA	NA	NA	NA	NA	NA	NA	NA	NA	NA	NA	NA	NA

Georgia - survey details

1998 Georgia, Multiple Indicator Cluster Survey 1999, 2000

Pol3 Card or History 81 15-27 m 718 0

Vaccine	Confirmation method	Coverage	Age cohort	Sample	Cards seen
BCG	Card or History	91	15-27 m	718	0
BCG	C or H <12 months	80	15-27 m	718	0
DTP1	C or H <12 months	75	15-27 m	718	0
DTP1	Card or History	87	15-27 m	718	0
DTP3	C or H <12 months	61	15-27 m	718	0
DTP3	Card or History	80	15-27 m	718	0
MCV	Card or History	73	15-27 m	718	0
MCV	C or H <12 months	48	15-27 m	718	0
Pol1	Card or History	86	15-27 m	718	0
Pol1	C or H <12 months	74	15-27 m	718	0
Pol3	C or H <12 months	62	15-27 m	718	0

1998 Immunization Programme Evaluation, Georgia November 1999, 2000

Vaccine	Confirmation method	Coverage	Age cohort	Sample	Cards seen
BCG	Card or History	92	15-26 m	718	86
DTP1	Card or History	87	15-26 m	718	86
DTP3	Card or History	80	15-26 m	718	86
MCV	Card or History	73	15-26 m	718	86
Pol1	Card or History	87	15-26 m	718	86
Pol3	Card or History	80	15-26 m	718	86

Further information and estimates for 1980-1996 are available at:

http://www.childinfo.org/immunization_countryreports.html

http://www.who.int/immunization_monitoring/routine/immunization_coverage/en/index4.html