



WHO / UNICEF

**Joint Monitoring Programme
for Water Supply and Sanitation**

Estimates for the use of

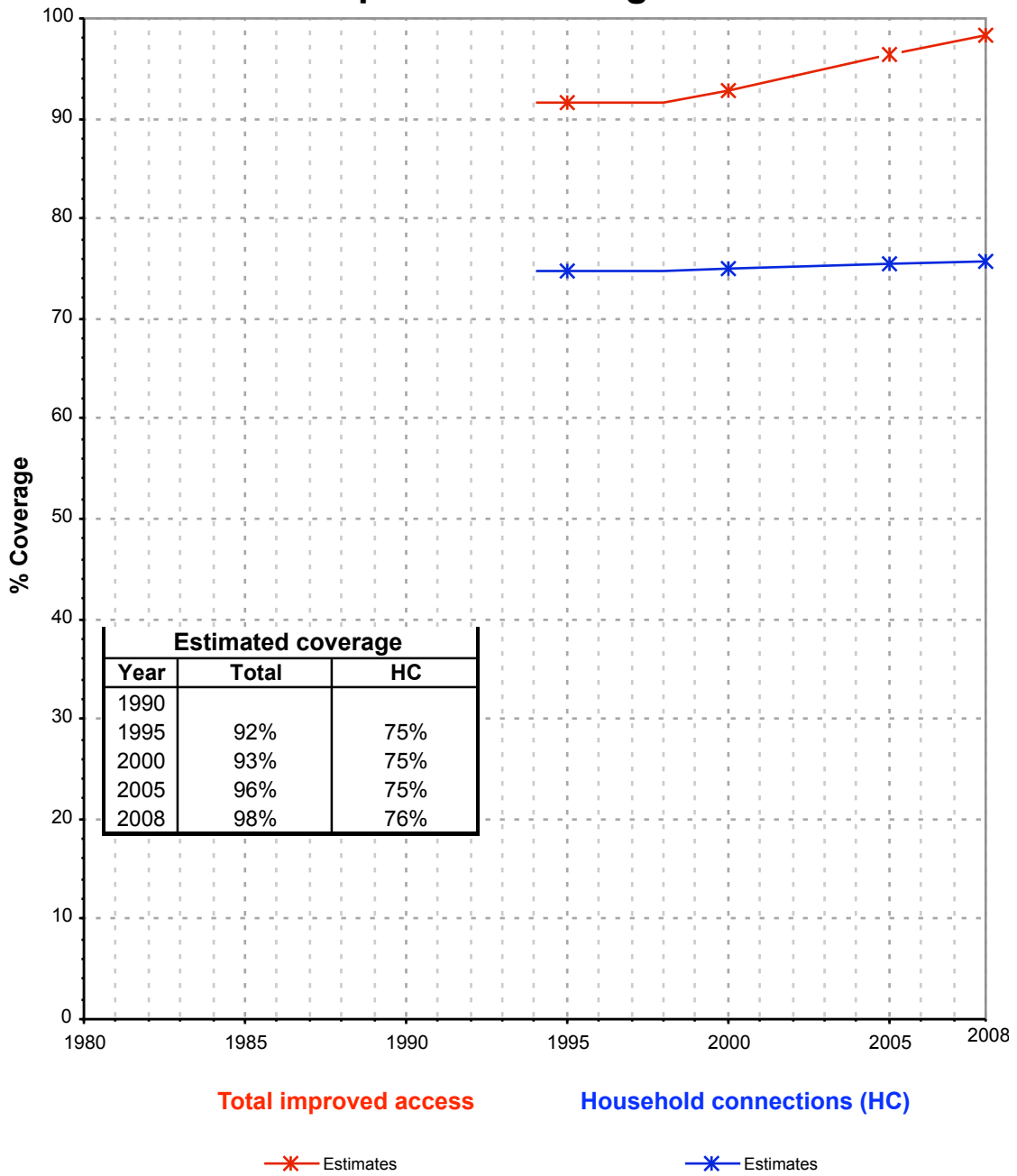
**Improved
Drinking-Water Sources**

Updated March 2010

Guyana

Guyana			DRINKING WATER							
			URBAN				RURAL			
			House connection		Total		House connection		Total	
Source	Code	Year	Used	Not used	Used	Not used	Used	Not used	Used	Not used
Multiple Indicator Cluster Survey	MICS00	2000	79.2		96.2		47.5		85.9	
Aid Indicator Survey	AIS05	2005	70.1		98.3		58.0		93.0	
Multiple Indicator Cluster Survey	MICS06	2006	81.6		97.1		58.4		89.0	
Population and Housing Census - 2002	CEN02	2002	70.2		88.8		67.5		88.7	

Guyana - urban - Use of improved drinking water sources



Guyana - rural - Use of improved drinking water sources

