



WHO / UNICEF

**Joint Monitoring Programme
for Water Supply and Sanitation**

Coverage Estimates
Improved Sanitation

Updated in July 2008

Gambia

Estimate

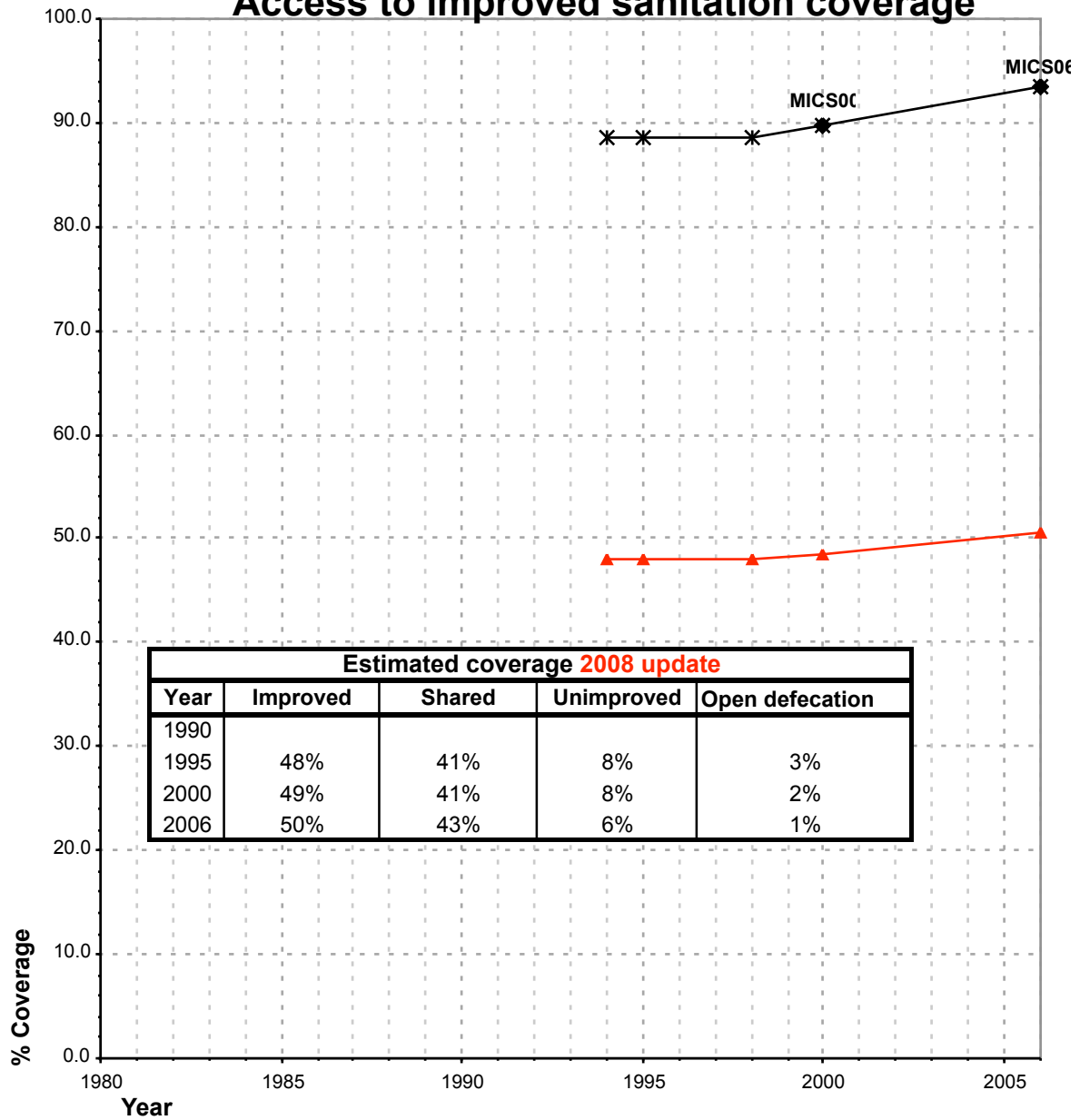
FORM6/WHO	1999	
(Population in thousands)		
SANITATION	Urban	Rural
Population served with household connections to conventional sewers	137.5	0
Population without household connections but served with adequate, private or shared on-site system	30.12	239.38
Total population served	167.62	239.38
Total population unserved	240.48	452.52
Total population	408.1	691.9
Population with adequate sanitation	41%	35%
% House connections	34%	0%

Source: Global Water Supply and Sanitation Assessment 2000. Water Supply and Sanitation Sector Questionnaire - 1999. Form 6 sent to WHO.

Gambia			SANITATION								OPEN DEFECCATION			
			URBAN				RURAL				Urban		Rural	
			HC		Total		HC		Total		Used for estimates	Not used for estimates	Used for estimates	Not used for estimates
Source	Code	Year	Used for estimates	Not used for estimates	Used for estimates	Not used for estimates	Used for estimates	Not used for estimates	Used for estimates	Not used for estimates	Used for estimates	Not used for estimates		
The International Drinking Water Supply and Sanitation Decade. Review of National Baseline Data (as at December 1980). WHO 1984	WHO80	1980												
The International Drinking Water Supply and Sanitation Decade. Review of National Progress (as at December 1983). WHO 1986.	WHO83	1983												
The International Drinking Water Supply and Sanitation Decade. Review of Mid-Decade Progress (as at December 1985). WHO 1987.	WHO85	1985												
The International Drinking Water Supply and Sanitation Decade. Review of National Progress (as at December 1988). WHO 1990.	WHO88	1988												
The International Drinking Water Supply and Sanitation Decade. End of Decade Review (as at December 1990). WHO1992.	WHO90	1990		30.0		100.0						27.0		
Water Supply and Sanitation Sector Monitoring Report - 1996. Sector Status as of 31 December 1994. WHO/UNICEF 1996.	JMP96	1993				83.0						23.0		
Multiple Indicator Cluster Survey 1996. Central Statistics Department in Collaboration with UNICEF 1996.	MICS96	1996												
Global Water Supply and Sanitation Assessment 2000. Water Supply and Sanitation Sector Questionnaire - 1999. (Form 6 sent to WHO)	JMP99	1999		33.7		41.1		0.0				34.6		
The Gambia, Multiple Indicator Cluster Survey Report 2000. Government of The Gambia in collaboration with UNICEF.	MICS00	2000	4.5		89.8		0.1		70.0		1.7		11.9	
Multiple Cluster Indicator Survey, 2006	MICS06	2006	7.7		93.4		0.6		78.3		0.7		6.7	

insufficient data

Gambia - urban - Access to improved sanitation coverage



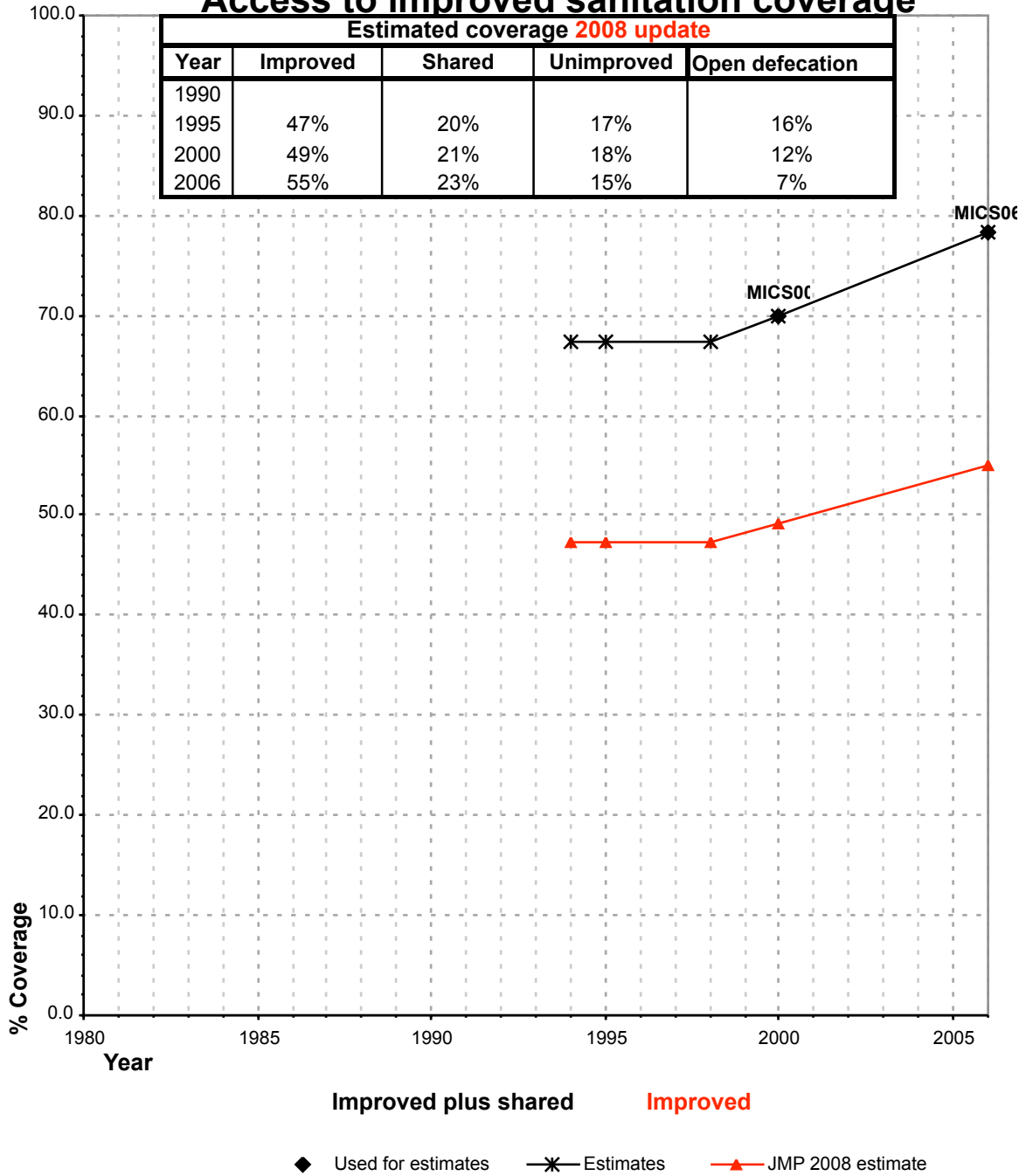
Estimated coverage 2008 update				
Year	Improved	Shared	Unimproved	Open defecation
1990				
1995	48%	41%	8%	3%
2000	49%	41%	8%	2%
2006	50%	43%	6%	1%

Improved plus shared Improved

◆ Used for estimates *— Estimates ▲— JMP 2008 estimate

Shared facilities :
The proportion of the population using a shared improved sanitation facility is based on the MICS06

Gambia - rural - Access to improved sanitation coverage



Shared facilities :
 The proportion of the population using a shared improved sanitation facility is based on the MICS06