



WHO / UNICEF

**Joint Monitoring Programme
for Water Supply and Sanitation**

Coverage Estimates
Improved Sanitation

Updated in July 2008

Guinea

Surveys

DHS 1992		
SANITATION	Urban	Rural
Flush toilet	17.8	1.1
Improved Pit ²	23.1	10.3
Simple Pit ¹	52.8	39.8
Nature	5.9	4.8
Other/Not Defined	0.6	0.8
TOTAL	100	100
Access to improved sanitation	41%	11%

Source: Guinea Demographic and Health Survey 1992.

MICS 1996		
SANITATION	Urban	Rural
Flush toilet	8.5	1.2
Protected Latrine ³	45.6	17.8
Unprotected Latrine	40.9	42.4
No Facilities	5	38.6
Not Specified	0	0
TOTAL	100	100
protected latrines/all latrines	0.53	0.30
sanitation	54%	19%

Source: Guinea Multiple Indicator Cluster Survey 1996

DHS (EDSG-II) 1999		
SANITATION	Urban	Rural
Chasse d'eau	7.7	0.2
Fosse Amelieoree/latrine	47.6	5.0
Fosse Sommaire	39.3	42.2
Pas de toilettes	3.4	50.9
ND	2.0	1.6
TOTAL	100.0	99.9
Access to improved sanitation	55%	5%
% House connections		

Source: Guinée, Enquête démographique et de santé, 1999

Urban and Rural Sanitation - Guinea

MICS		2003	
SANITATION	Urban	Rural	Total
Chasse d'eau	9.4	0.8	4.2
Latrine Ameliorée	68.0	16.2	36.6
Latrine Non ameliorée Pas de toilettes ou brousse ou champ	19.8	48.6	37.3
ND	1.8	33.7	21.1
Autre	0.6	0.2	0.3
	0.2	0.6	0.5
TOTAL	99.8	100.1	100.0
Access to improved sanitation	77%	17%	41%
% House connections			

Source: Guinée, Enquête a Indicateurs Multiples (MICS 2004)

DHS		2005	
SANITATION	Urban	Rural	
Chasse d'eau	7.0	0.4	
Fosse/Latrine ventilee ameliorées	3.1	1.5	
Fosse/Latrine couvertes	49.8	12.8	
Fosse/Latrine non couvertes	37.7	43.6	
Pas de toilette/nature	2.2	41.5	
ND	0.2	0.2	
TOTAL	100.0	100.0	
Access to improved sanitation	60%	15%	
% House connections			

Source: Guinée, EDSG-III 2005

Census		
Proportion shared improved facilities/all improved facilities	0.54	0.19
Census	1996	
(Population in thousands)		
Sanitation	Urban	Rural
Private sewerage connection	0	0
Private septic tank	352	91
Shared latrine	1255	430
Private latrine	401	1522
No Facilities	76	2853
Other / not specified	55	122
Total population (1996)	2140	5017
Proportion latrines improved based on MICS96	873.2	577.0
Access to improved sanitation	57%	13%
% House connections	0%	0%

Source: National census 1996 as recorded on the Global Water Supply and Sanitation Assessment 2000. Water Supply and Sanitation Sector Questionnaire - 1999.

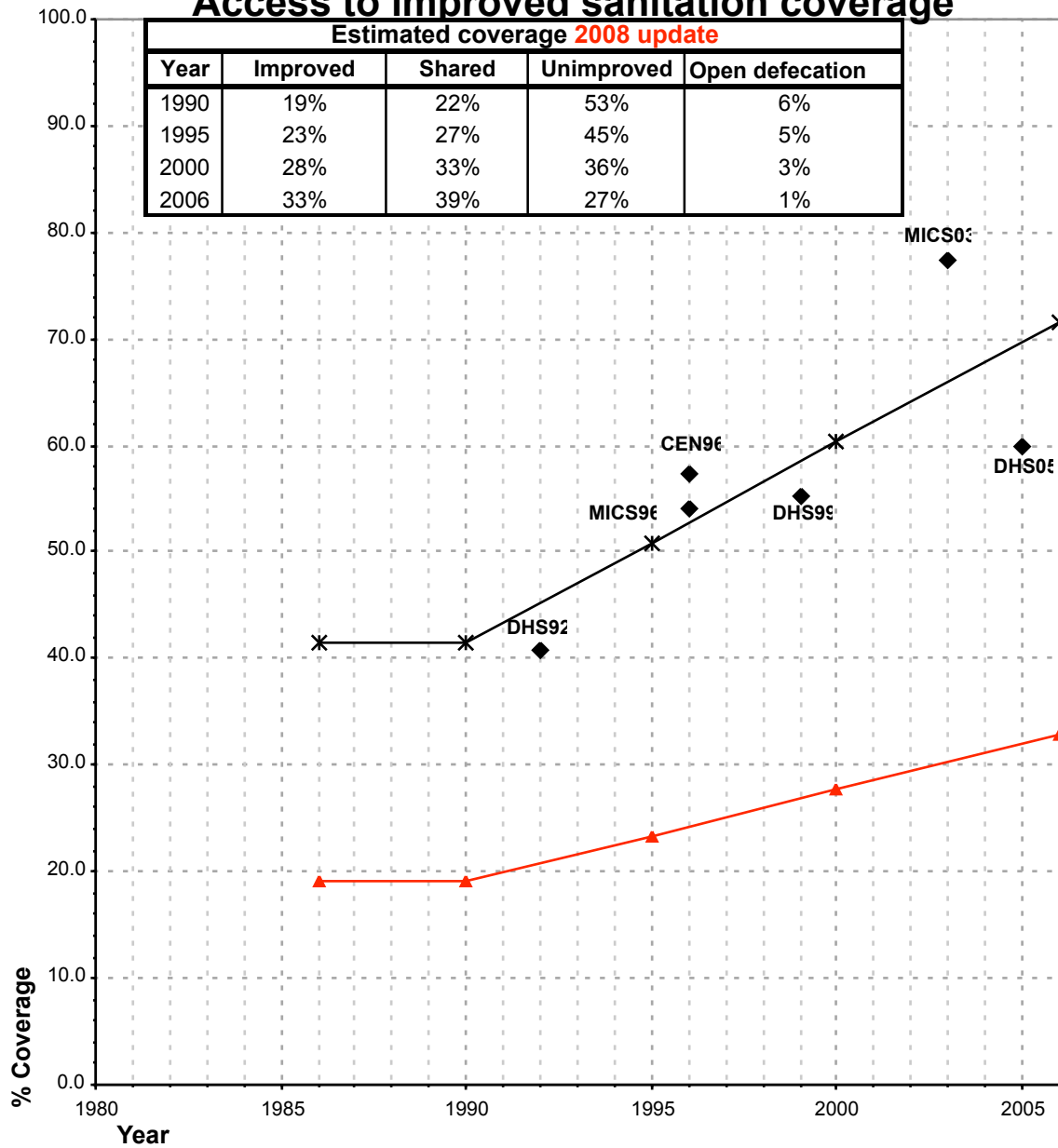
Estimate

FORM6/WHO		1999	
(Population in thousands)			
SANITATION	Urban	Rural	
Population served with household connections to conventional sewers	188	0	
Population without household connections but served with adequate, private or shared on-site system	2013	2238	
Total population served	2201	2238	
Total population unserved	144	3272	
Total population	2345	5510	
Access to improved sanitation	94%	41%	
% House connections	8%	0%	

Source: *Global Water Supply and Sanitation Assessment 2000. Water Supply and Sanitation Sector Questionnaire - 1999 (Form 6 as sent to WHO).*

Guinea			SANITATION								OPEN DEFECCATION				
			URBAN				RURAL								
			Source	Code	Year	HC		Total		HC		Total		Urban	
Used for estimates	Not used for estimates	Used for estimates				Not used for estimates	Used for estimates	Not used for estimates	Used for estimates	Not used for estimates	Used for estimates	Not used for estimates	Used for estimates	Not used for estimates	
The International Drinking Water Supply and Sanitation Decade. Review of National Baseline Data (as at December 1980). WHO 1984	WHO80	1980		13.0		54.0									
The International Drinking Water Supply and Sanitation Decade. Review of Mid-Decade Progress (as at December 1985). WHO 1987.	WHO85	1985		9.0											
The International Drinking Water Supply and Sanitation Decade. Review of National Progress (as at December 1988). WHO 1990.	WHO88	1988		9.0		65.0									
The International Drinking Water Supply and Sanitation Decade. End of Decade Review (as at December 1990). WHO1992.	WHO90	1990												0.0	
Water Supply and Sanitation Sector Monitoring Report 1993 (Sector Status as of 31 December 1991)	JMP93	1991				84.0								5.0	
Guinea Demographic and Health Survey 1992.	DHS92	1992			40.9					11.4				5.9	48.0
Guinea 1996 Census (as reported in form 4 of the Global Water Supply and Sanitation Assessment 2000. Water Supply and Sanitation Sector Questionnaire - 1999).	CEN96	1996	0.0		57.2		0.0			13.3				3.6	56.9
Multiple Indicator Cluster Survey, Guinea 1996.	MICS96	1996			54.1					19.0				5.0	38.6
Global Water Supply and Sanitation Assessment 2000. Water Supply and Sanitation Sector Q	JMP99	1999		8.0		94.0		0.0						41.0	
Guinée, Enquête démographique et de santé, 1999	DHS99	1999			55.3					5.2				3.4	50.9
Multiple Indicator Cluster Survey, Guinea 2003.	MICS03	2003			77.4					17.0				1.8	33.7
Guinea, Demographic and Health Survey (EDSG-III) 2005	DHS05	2005			59.9					14.7				2.2	41.5

Guinea - urban - Access to improved sanitation coverage



Improved plus shared

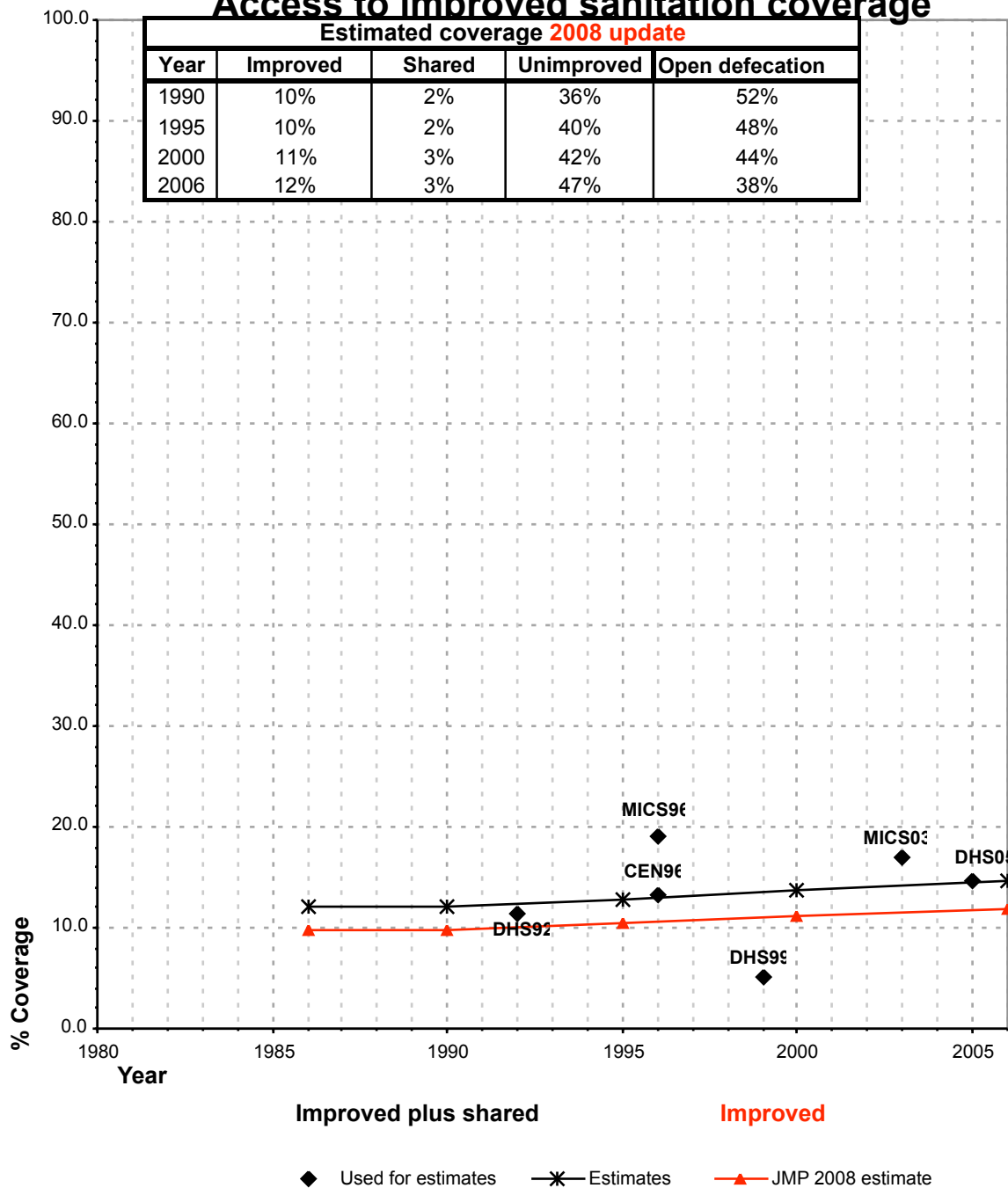
Improved

◆ Used for estimates *— Estimates ▲ JMP 2008 estimate

Shared facilities :

The proportion of the population using a shared improved sanitation facility is based on the Census

Guinea - rural - Access to improved sanitation coverage



Shared facilities :
The proportion of the population using a shared improved sanitation facility is based on the Census