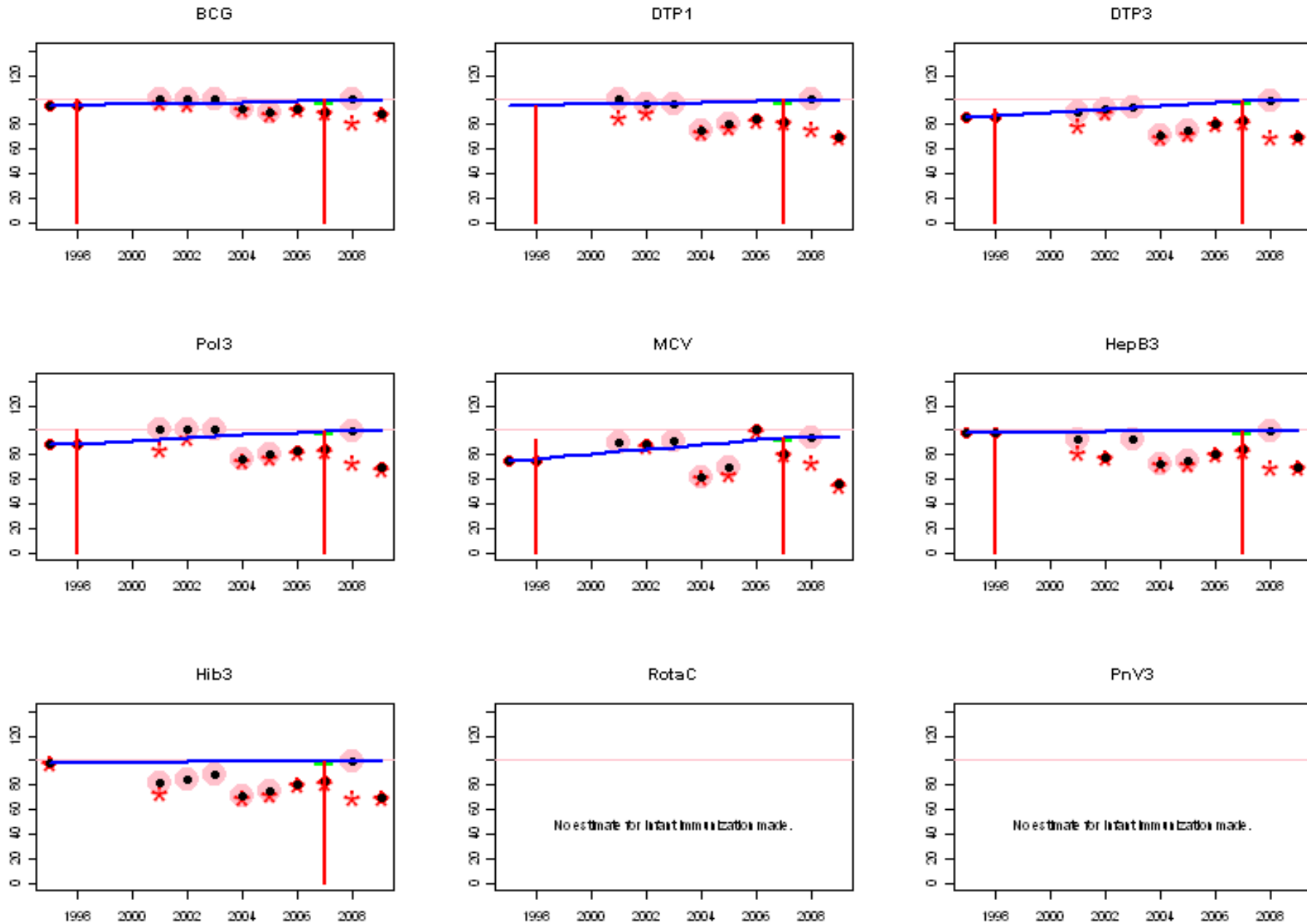
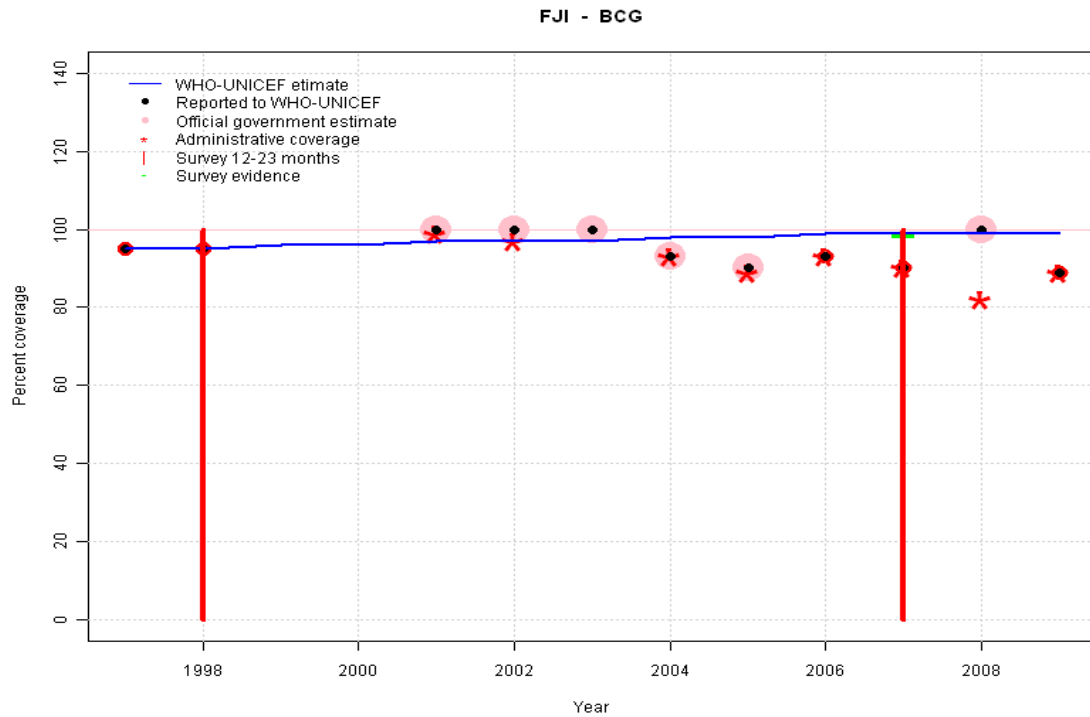


Fiji: WHO and UNICEF estimates of immunization coverage, 1997 - 2009



Fiji - BCG



	1997	1998	1999	2000	2001	2002	2003	2004	2005	2006	2007	2008	2009
Estimate	95	95	96	96	97	97	97	98	98	99	99	99	99
Reported	95	95	NA	NA	100	100	100	93	90	93	90	100	89
Official	NA	NA	NA	NA	100	100	100	93	90	NA	NA	100	NA
Administrative	NA	NA	NA	NA	99	97	NA	93	89	93	90	82	89
Survey	NA	NA	NA	NA	NA	NA	NA	NA	NA	NA	99	NA	NA

Description:

1997: Legacy estimate.

1998: Estimate based on working group decision to interpolated between 1997 and 2007. Fluctuating and inconsistent data across antigens suggest poor reporting. Survey results of 100 percent with sample size 0 ignored; sample size less than 300.

1999: Estimate based on working group decision to interpolated between 1997 and 2007. Fluctuating and inconsistent data across antigens suggest poor reporting.

2000: Estimate based on working group decision to interpolated between 1997 and 2007. Fluctuating and inconsistent data across antigens suggest poor reporting.

2001: Estimate based on working group decision to interpolated between 1997 and 2007. Fluctuating and inconsistent data across antigens suggest poor reporting.

2002: Estimate based on working group decision to interpolated between 1997 and 2007. Fluctuating and inconsistent data across antigens suggest poor reporting.

2003: Estimate based on working group decision to interpolated between 1997 and 2007. Fluctuating and inconsistent data across antigens suggest poor reporting.

2004: Estimate based on working group decision to interpolated between 1997 and 2007. Fluctuating and inconsistent data across antigens suggest poor reporting.

2005: Estimate based on working group decision to interpolated between 1997 and 2007. Fluctuating and inconsistent data across antigens suggest poor reporting.

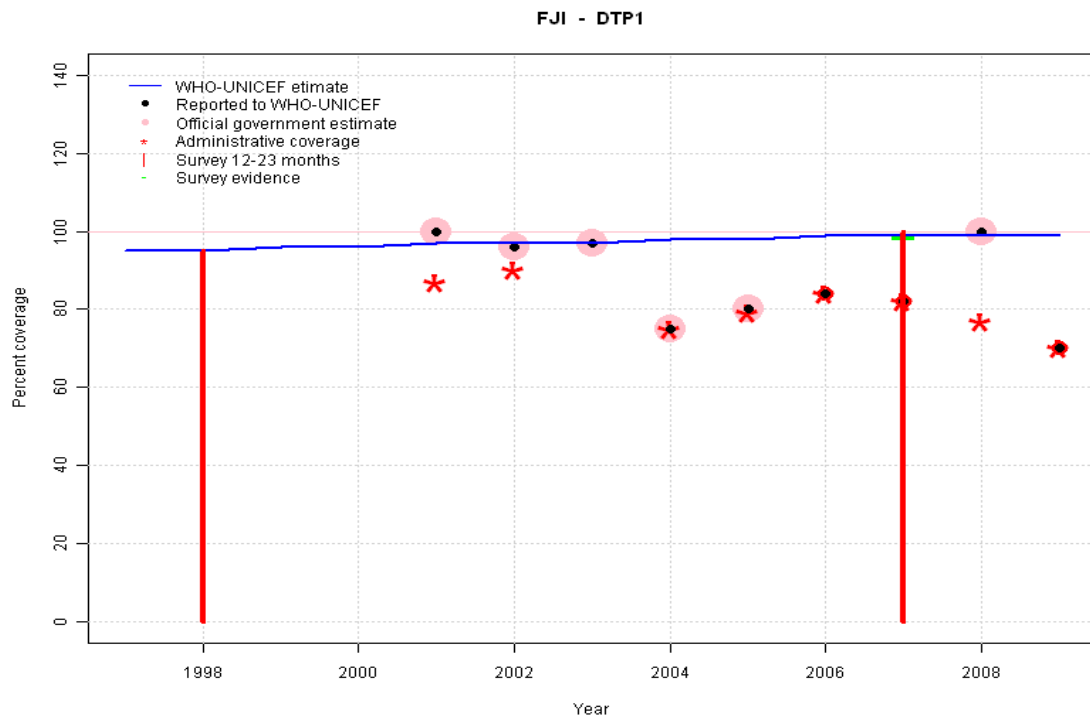
2006: Estimate based on working group decision to interpolated between 1997 and 2007. Fluctuating and inconsistent data across antigens suggest poor reporting.

2007: Estimate based on survey results to maintain consistency with other vaccines.

2008: Estimate extrapolated from 2007 level (99 percent).

2009: Estimate extrapolated from 2007 level (99 percent). 2009 reported data (89 percent) inconsistent with data from other years.

Fiji - DTP1

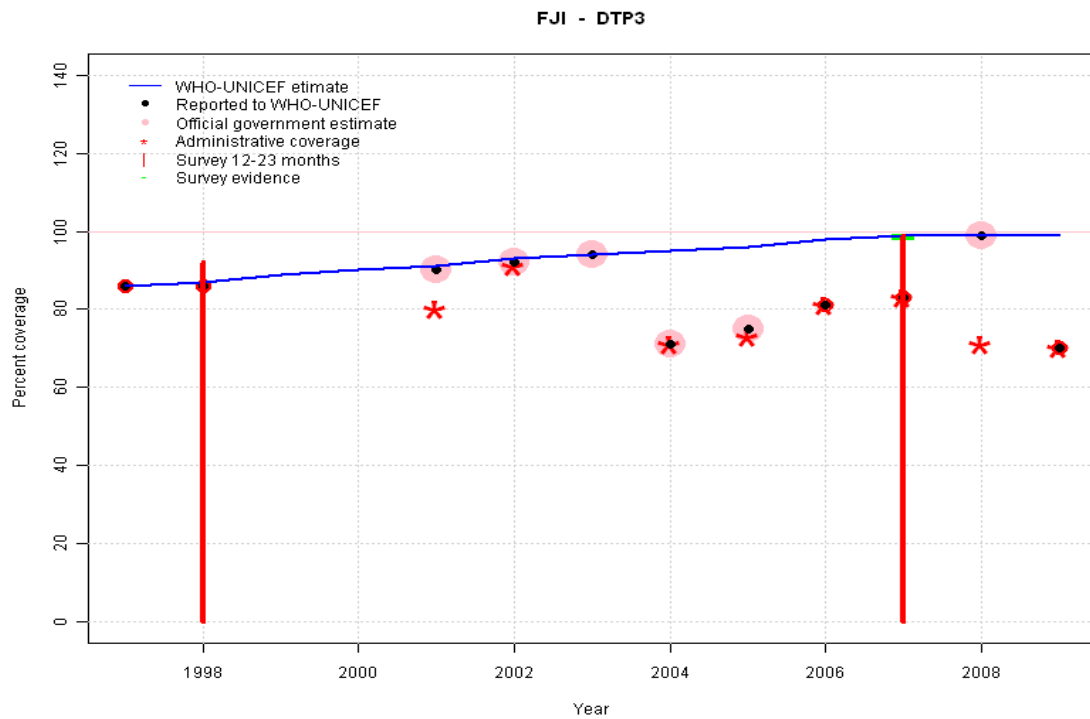


	1997	1998	1999	2000	2001	2002	2003	2004	2005	2006	2007	2008	2009
Estimate	95	95	96	96	97	97	97	98	98	99	99	99	99
Reported	NA	NA	NA	NA	100	96	97	75	80	84	82	100	70
Official	NA	NA	NA	NA	100	96	97	75	80	NA	NA	100	NA
Administrative	NA	NA	NA	NA	87	90	NA	75	79	84	82	77	70
Survey	NA	NA	NA	NA	NA	NA	NA	NA	NA	NA	99	NA	NA

Description:

- 1997: Legacy estimate.
- 1998: Estimate interpolated between 1997 and 2007 estimates. Survey results of 95 percent with sample size 0 ignored; sample size less than 300.
- 1999: Estimate interpolated between 1997 and 2007 estimates.
- 2000: Estimate interpolated between 1997 and 2007 estimates.
- 2001: Estimate interpolated between 1997 and 2007 estimates.
- 2002: Estimate interpolated between 1997 and 2007 estimates.
- 2003: Estimate interpolated between 1997 and 2007 estimates.
- 2004: Estimate interpolated between 1997 and 2007 estimates.
- 2005: Estimate interpolated between 1997 and 2007 estimates.
- 2006: Estimate interpolated between 1997 and 2007 estimates.
- 2007: Estimate based on survey results. Reported data (82 percent) not consistent with survey results (99 percent).
- 2008: Estimate extrapolated from 2007 level (99 percent). 2008 reported data (100 percent) inconsistent with data from other years.
- 2009: Estimate extrapolated from 2007 level (99 percent). 2009 reported data (70 percent) inconsistent with data from other years.

Fiji - DTP3



	1997	1998	1999	2000	2001	2002	2003	2004	2005	2006	2007	2008	2009
Estimate	86	87	89	90	91	93	94	95	96	98	99	99	99
Reported	86	86	NA	NA	90	92	94	71	75	81	83	99	70
Official	NA	NA	NA	NA	90	92	94	71	75	NA	NA	99	NA
Administrative	NA	NA	NA	NA	80	91	NA	71	73	81	83	71	70
Survey	NA	NA	NA	NA	NA	NA	NA	NA	NA	NA	99	NA	NA

Description:

1997: Legacy estimate.

1998: Estimate interpolated between 1997 and 2007 estimates. Survey results of 92 percent with sample size 0 ignored; sample size less than 300.

1999: Estimate interpolated between 1997 and 2007 estimates.

2000: Estimate interpolated between 1997 and 2007 estimates.

2001: Estimate interpolated between 1997 and 2007 estimates.

2002: Estimate interpolated between 1997 and 2007 estimates.

2003: Estimate interpolated between 1997 and 2007 estimates.

2004: Estimate interpolated between 1997 and 2007 estimates.

2005: Estimate interpolated between 1997 and 2007 estimates.

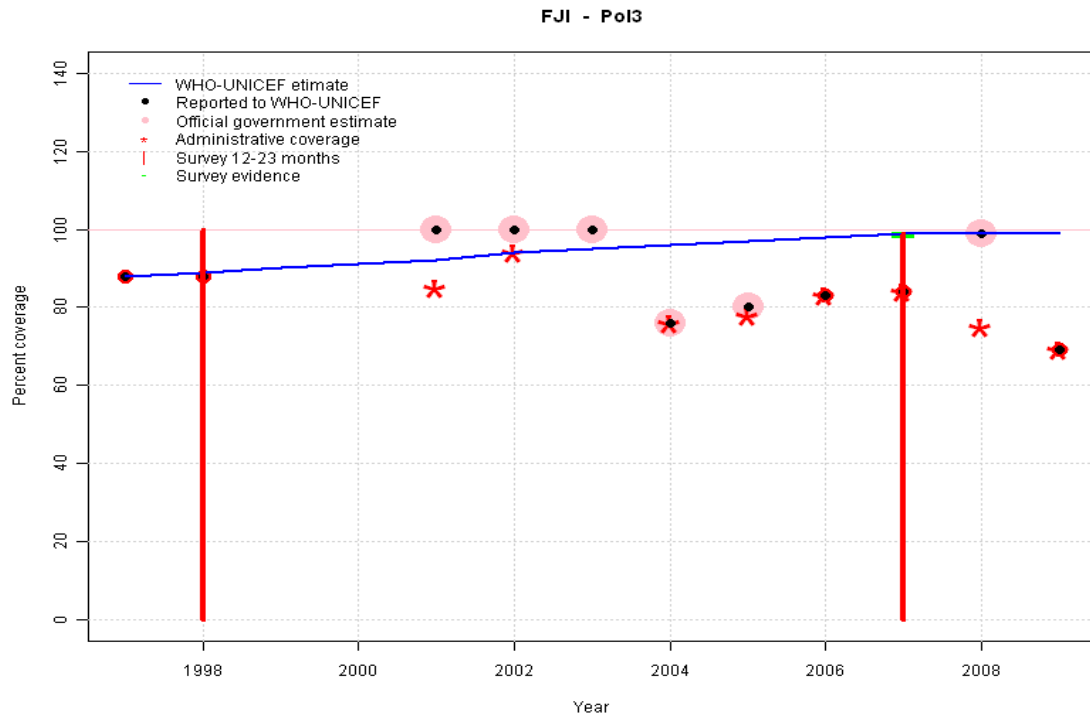
2006: Estimate interpolated between 1997 and 2007 estimates.

2007: Estimate based on survey results. Reported data (83 percent) not consistent with survey results (99 percent). Survey results (99 percent) adjusted for recall bias to 99 percent based on first dose card or history coverage (100 percent) and documented drop-out between first (80 percent) and third (79 percent) doses.

2008: Estimate extrapolated from 2007 level (99 percent). 2008 reported data (99 percent) inconsistent with data from other years.

2009: Estimate extrapolated from 2007 level (99 percent). 2009 reported data (70 percent) inconsistent with data from other years.

Fiji - Pol3

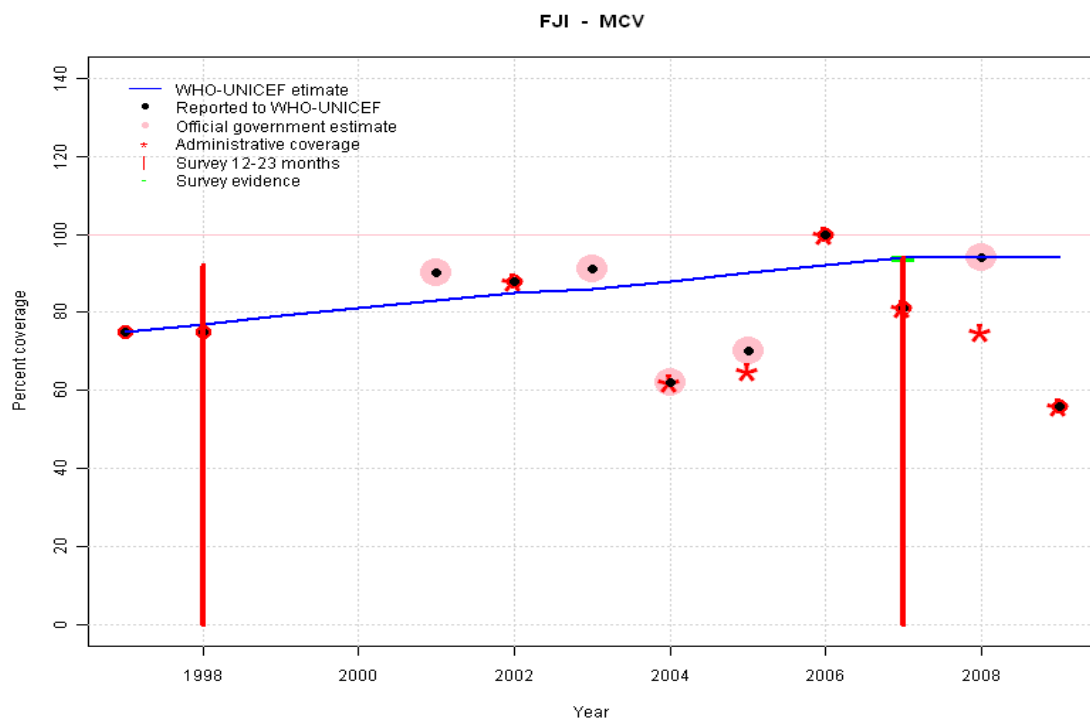


	1997	1998	1999	2000	2001	2002	2003	2004	2005	2006	2007	2008	2009
Estimate	88	89	90	91	92	94	95	96	97	98	99	99	99
Reported	88	88	NA	NA	100	100	100	76	80	83	84	99	69
Official	NA	NA	NA	NA	100	100	100	76	80	NA	NA	99	NA
Administrative	NA	NA	NA	NA	85	94	NA	76	78	83	84	75	69
Survey	NA	NA	NA	NA	NA	NA	NA	NA	NA	NA	99	NA	NA

Description:

- 1997: Legacy estimate.
- 1998: Estimate interpolated between 1997 and 2007 estimates. Survey results of 100 percent with sample size 0 ignored; sample size less than 300.
- 1999: Estimate interpolated between 1997 and 2007 estimates.
- 2000: Estimate interpolated between 1997 and 2007 estimates.
- 2001: Estimate interpolated between 1997 and 2007 estimates.
- 2002: Estimate interpolated between 1997 and 2007 estimates.
- 2003: Estimate interpolated between 1997 and 2007 estimates.
- 2004: Estimate interpolated between 1997 and 2007 estimates.
- 2005: Estimate interpolated between 1997 and 2007 estimates.
- 2006: Estimate interpolated between 1997 and 2007 estimates.
- 2007: Estimate based on survey results. Reported data (84 percent) not consistent with survey results (99 percent). Survey results (99 percent) adjusted for recall bias to 99 percent based on first dose card or history coverage (100 percent) and documented drop-out between first (80 percent) and third (79 percent) doses.
- 2008: Estimate extrapolated from 2007 level (99 percent). 2008 reported data (99 percent) inconsistent with data from other years.
- 2009: Estimate extrapolated from 2007 level (99 percent). 2009 reported data (69 percent) inconsistent with data from other years.

Fiji - MCV



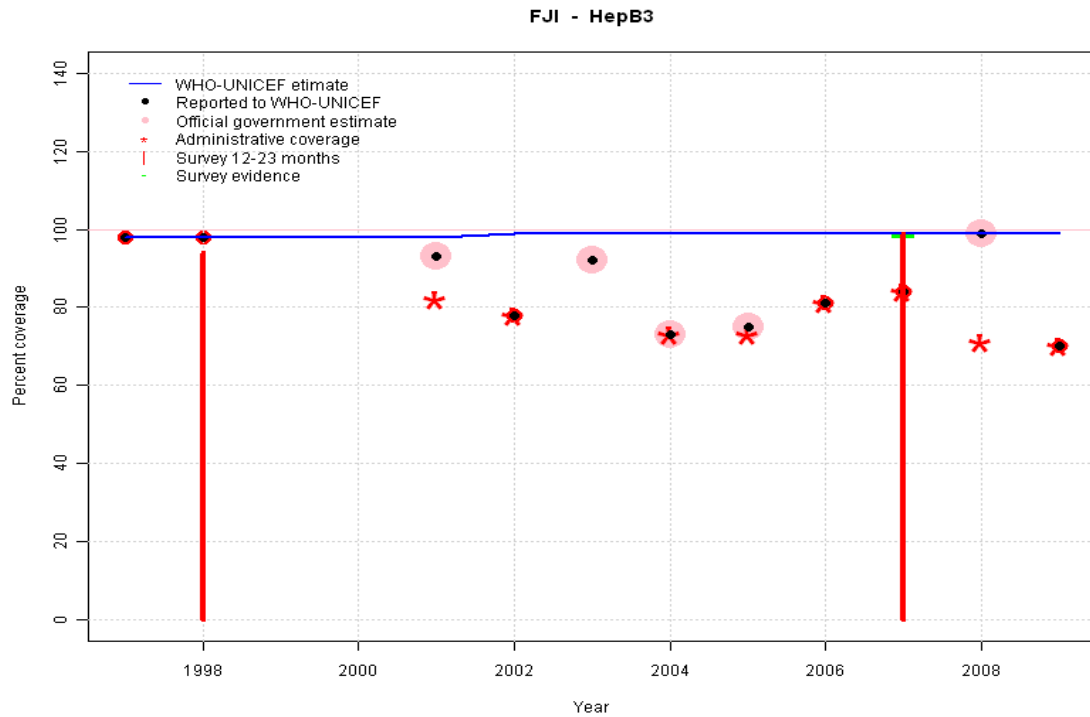
	1997	1998	1999	2000	2001	2002	2003	2004	2005	2006	2007	2008	2009
Estimate	75	77	79	81	83	85	86	88	90	92	94	94	94
Reported	75	75	NA	NA	90	88	91	62	70	100	81	94	56
Official	NA	NA	NA	NA	90	NA	91	62	70	NA	NA	94	NA
Administrative	NA	NA	NA	NA	NA	88	NA	62	65	100	81	75	56
Survey	NA	NA	NA	NA	NA	NA	NA	NA	NA	NA	94	NA	NA

Description:

- 1997: Legacy estimate.
- 1998: Estimate interpolated between 1997 and 2007 estimates. Survey results of 92 percent with sample size 0 ignored; sample size less than 300.
- 1999: Estimate interpolated between 1997 and 2007 estimates.
- 2000: Estimate interpolated between 1997 and 2007 estimates.
- 2001: Estimate interpolated between 1997 and 2007 estimates.
- 2002: Estimate interpolated between 1997 and 2007 estimates.
- 2003: Estimate interpolated between 1997 and 2007 estimates.
- 2004: Estimate interpolated between 1997 and 2007 estimates.
- 2005: Estimate interpolated between 1997 and 2007 estimates.
- 2006: Estimate interpolated between 1997 and 2007 estimates. 2006 reported data (100 percent) inconsistent with data from other years.
- 2007: Estimate based on survey results. Reported data (70 percent) not consistent with survey results (94 percent). 2007 reported data (81 percent) inconsistent with data from other years.
- 2008: Estimate extrapolated from 2007 level (94 percent). 2008 reported data (94 percent) inconsistent with data from other years.
- 2009: Estimate extrapolated from 2007 level (94 percent). 2009 reported data (56 percent) inconsistent with data from other years.

Fiji - HepB3

Description:

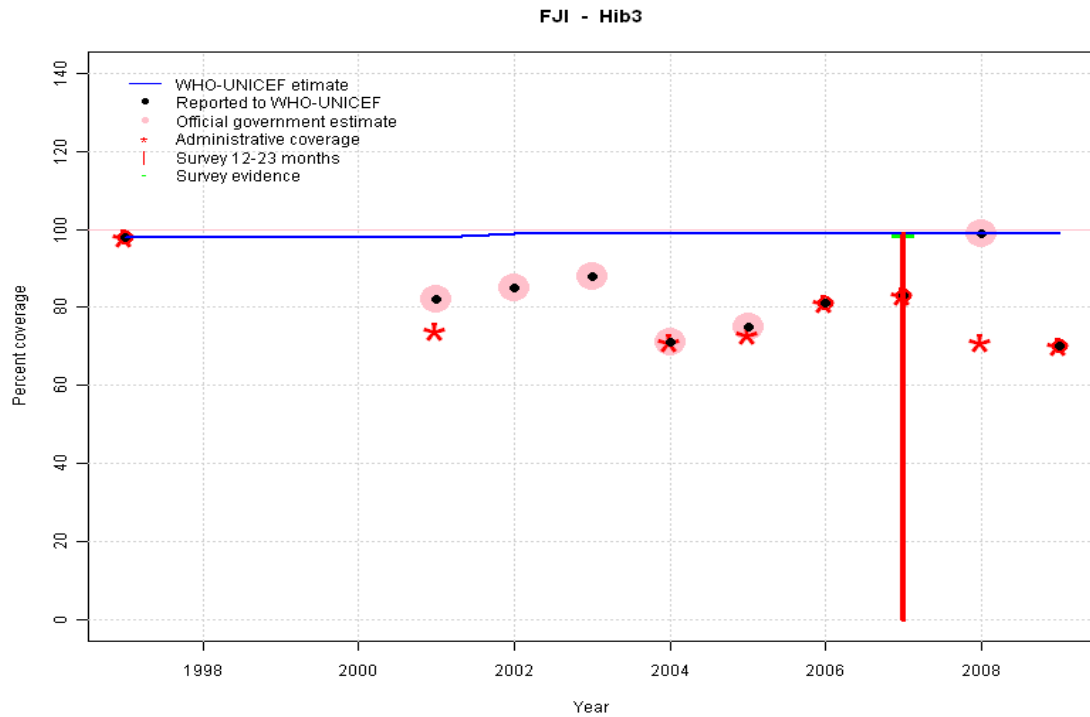


- 1997: Legacy estimate.
- 1998: Estimate interpolated between 1997 and 2007 estimates. Survey results of 94 percent with sample size 0 ignored; sample size less than 300.
- 1999: Estimate interpolated between 1997 and 2007 estimates.
- 2000: Estimate interpolated between 1997 and 2007 estimates.
- 2001: Estimate interpolated between 1997 and 2007 estimates.
- 2002: Estimate interpolated between 1997 and 2007 estimates. 2002 reported data (78 percent) inconsistent with data from other years.
- 2003: Estimate interpolated between 1997 and 2007 estimates. 2003 reported data (92 percent) inconsistent with data from other years.
- 2004: Estimate interpolated between 1997 and 2007 estimates.
- 2005: Estimate interpolated between 1997 and 2007 estimates.
- 2006: Estimate interpolated between 1997 and 2007 estimates.
- 2007: Estimate based on survey results. Reported data (84 percent) not consistent with survey results (99 percent).
- 2008: Estimate extrapolated from 2007 level (99 percent). 2008 reported data (99 percent) inconsistent with data from other years.
- 2009: Estimate extrapolated from 2007 level (99 percent). 2009 reported data (70 percent) inconsistent with data from other years.

	1997	1998	1999	2000	2001	2002	2003	2004	2005	2006	2007	2008	2009
Estimate	98	98	98	98	98	99	99	99	99	99	99	99	99
Reported	98	98	NA	NA	93	78	92	73	75	81	84	99	70
Official	NA	NA	NA	NA	93	NA	92	73	75	NA	NA	99	NA
Administrative	NA	NA	NA	NA	82	78	NA	73	73	81	84	71	70
Survey	NA	NA	NA	NA	NA	NA	NA	NA	NA	NA	99	NA	NA

Fiji - Hib3

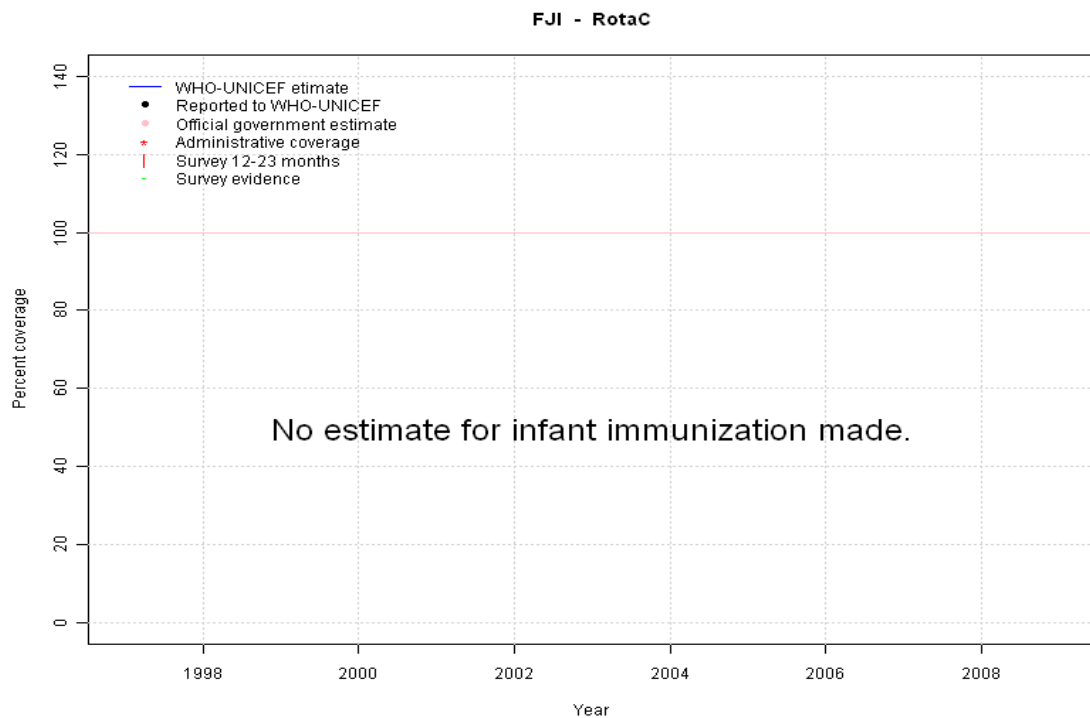
Description:



- 1997: Legacy estimate. Hib introduced in 1997 Vaccine presentation is DTP-HepB-Hib.
- 1998: Estimate interpolated between 1997 and 2007 estimates.
- 1999: Estimate interpolated between 1997 and 2007 estimates.
- 2000: Estimate interpolated between 1997 and 2007 estimates.
- 2001: Estimate interpolated between 1997 and 2007 estimates.
- 2002: Estimate interpolated between 1997 and 2007 estimates.
- 2003: Estimate interpolated between 1997 and 2007 estimates.
- 2004: Estimate interpolated between 1997 and 2007 estimates.
- 2005: Estimate interpolated between 1997 and 2007 estimates.
- 2006: Estimate interpolated between 1997 and 2007 estimates.
- 2007: Estimate based on survey results. Reported data (83 percent) not consistent with survey results (99 percent). Survey results (99 percent) adjusted for recall bias to 99 percent based on first dose card or history coverage (100 percent) and documented drop-out between first (80 percent) and third (79 percent) doses.
- 2008: Estimate extrapolated from 2007 level (99 percent). 2008 reported data (99 percent) inconsistent with data from other years.
- 2009: Estimate extrapolated from 2007 level (99 percent). 2009 reported data (70 percent) inconsistent with data from other years.

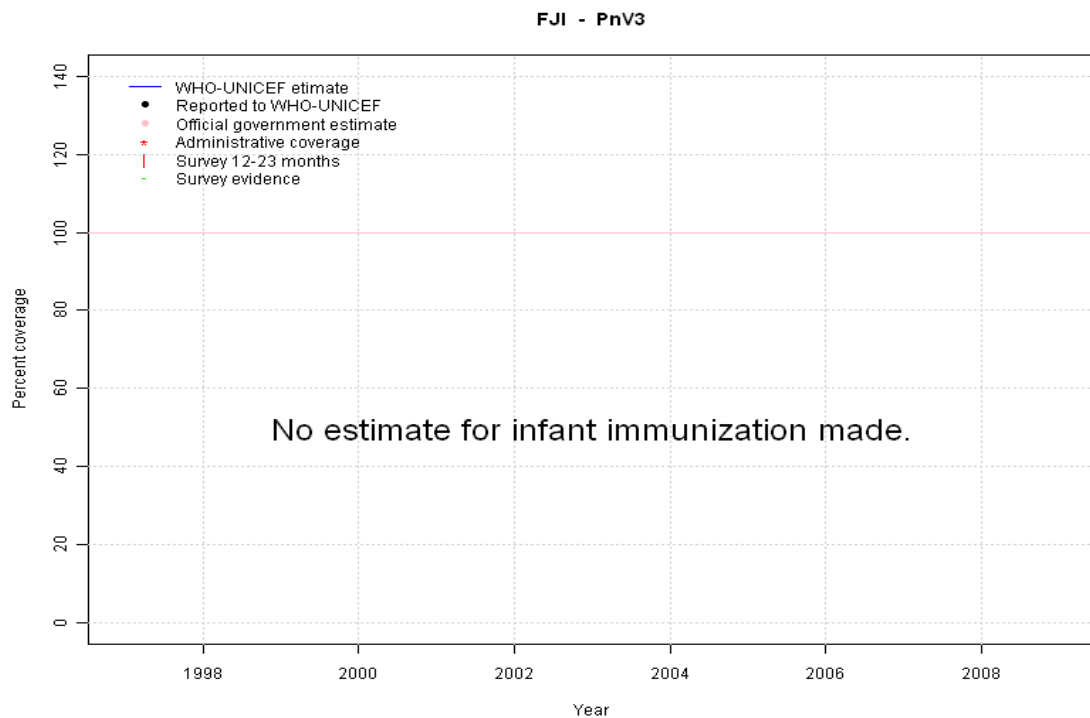
	1997	1998	1999	2000	2001	2002	2003	2004	2005	2006	2007	2008	2009
Estimate	98	98	98	98	98	99	99	99	99	99	99	99	99
Reported	98	NA	NA	NA	82	85	88	71	75	81	83	99	70
Official	NA	NA	NA	NA	82	85	88	71	75	NA	NA	99	NA
Administrative	98	NA	NA	NA	74	NA	NA	71	73	81	83	71	70
Survey	NA	NA	NA	NA	NA	NA	NA	NA	NA	NA	99	NA	NA

Fiji - RotaC



	1997	1998	1999	2000	2001	2002	2003	2004	2005	2006	2007	2008	2009
Estimate	NA	NA	NA	NA	NA	NA	NA	NA	NA	NA	NA	NA	NA
Reported	NA	NA	NA	NA	NA	NA	NA	NA	NA	NA	NA	NA	NA
Official	NA	NA	NA	NA	NA	NA	NA	NA	NA	NA	NA	NA	NA
Administrative	NA	NA	NA	NA	NA	NA	NA	NA	NA	NA	NA	NA	NA
Survey	NA	NA	NA	NA	NA	NA	NA	NA	NA	NA	NA	NA	NA

Fiji - PnV3



	1997	1998	1999	2000	2001	2002	2003	2004	2005	2006	2007	2008	2009
Estimate	NA	NA	NA	NA	NA	NA	NA	NA	NA	NA	NA	NA	NA
Reported	NA	NA	NA	NA	NA	NA	NA	NA	NA	NA	NA	NA	NA
Official	NA	NA	NA	NA	NA	NA	NA	NA	NA	NA	NA	NA	NA
Administrative	NA	NA	NA	NA	NA	NA	NA	NA	NA	NA	NA	NA	NA
Survey	NA	NA	NA	NA	NA	NA	NA	NA	NA	NA	NA	NA	NA

Fiji - survey details

2007 Fiji National Immunisation Coverage Survey 2008

Vaccine	Confirmation method	Coverage	Age cohort	Sample	Cards seen
BCG	Card	80	15-26 m	1200	78
BCG	Card or History	100	15-26 m	1200	78
DTP1	Card or History	100	15-26 m	1200	78
DTP1	Card	80	15-26 m	1200	78
DTP3	Card or History	99	15-26 m	1200	78
DTP3	Card	79	15-26 m	1200	78
HepB1	Card or History	100	15-26 m	1200	78
HepB1	Card	80	15-26 m	1200	78
HepB3	Card or History	99	15-26 m	1200	78
HepB3	Card	79	15-26 m	1200	78
Hib1	Card	80	15-26 m	1200	78
Hib1	Card or History	100	15-26 m	1200	78
Hib3	Card	79	15-26 m	1200	78
Hib3	Card or History	99	15-26 m	1200	78
MCV	Card	76	15-26 m	1200	78
MCV	Card or History	94	15-26 m	1200	78
Pol1	Card	80	15-26 m	1200	78
Pol1	Card or History	100	15-26 m	1200	78
Pol3	Card	79	15-26 m	1200	78
Pol3	Card or History	99	15-26 m	1200	78

2004 Fiji Immunization Coverage Survey Report 2005

Vaccine	Confirmation method	Coverage	Age cohort	Sample	Cards seen
BCG	Card	99	12-23 m	630	94
DTP3	Card	83	12-23 m	630	94
HepB3	Card	92	12-23 m	630	94
MCV	Card	80	12-23 m	630	94
Pol3	Card	76	12-23 m	630	94

1998 Fiji National EPI Survey 1999

Vaccine	Confirmation method	Coverage	Age cohort	Sample	Cards seen
BCG	Card or History	100	12-23 m	0	0
DTP1	Card or History	95	12-23 m	0	0
DTP3	Card or History	92	12-23 m	0	0
HepB3	Card or History	94	12-23 m	0	0
MCV	Card or History	92	12-23 m	0	0
Pol3	Card or History	100	12-23 m	0	0

Further information and estimates for 1980-1996 are available at:

http://www.childinfo.org/immunization_countryreports.html

http://www.who.int/immunization_monitoring/routine/immunization_coverage/en/index4.html

Fiji

WHO/UNICEF Estimates of Protection at Birth (PAB) against tetanus

In countries where tetanus is recommended for girls and women coverage is usually reported as "TT2+", i.e. the proportion of (pregnant) women who have received their second or superior TT dose in a given year. TT2 + coverage, however, can under-represent the actual proportion of births that are protected against tetanus as it does not include women who have previously received protective doses, women who received one dose without documentation of previous doses, and women who received doses in TT (or Td) supplemental immunization activities (SIA). In addition, girls who have received DTP in their childhood and are entering childbearing age, may be protected with TT booster doses.

WHO and UNICEF have developed a model that takes into account the above scenarios, and calculates the proportion of births in a given year that can be considered as having been protected against tetanus - "Protection at Birth".

In this model, annual cohorts of women are followed from infancy through their life. A proportion receive DTP in infancy (estimated based on the WHO-UNICEF estimates of DTP3 coverage). In addition some of these women also receive TT through routine services when they are pregnant and may also receive TT during SIAs. The model also adjusts reported data, taking into account coverage patterns in other years, and/or results available through surveys. The duration of protection is then calculated, based on WHO estimates of the duration of protection by doses ever received. The proportion of births that are protected against tetanus as a result of maternal immunization reflects the tetanus immunization received by the mother throughout her life rather than simply the TT immunizations received during the current pregnancy.

Year	PAB coverage estimate (%)
1997	86
1998	85
1999	84
2000	84
2001	83
2002	92
2003	92
2004	93
2005	93
2006	93
2007	94
2008	94
2009	94

¹ This model is described in: Griffiths U., Wolfson L., Quddus A., Younus M., Hafiz R.. Incremental cost-effectiveness of supplementary immunization activities to prevent neo-natal tetanus in Pakistan. Bulletin of the World Health Organization 2004; 82:643-651.