



WHO / UNICEF

**Joint Monitoring Programme
for Water Supply and Sanitation**

Coverage Estimates
Improved Sanitation

Updated in July 2008

Eritrea

Eritrea

Survey

DHS	1995	
SANITATION	Urban	Rural
Own flush toilet	29.9	0.1
Shared flush toilet	15.2	0.0
Ventilated improved pit	2.7	0.1
Traditional pit toilet	18.2	0.7
No facility/ bush	33.9	99.0
Missing info.	0.0	0.1
TOTAL	99.9	100.0
50% of traditional latrines estimated to be improved	9.1	0.4
% Use of an improved sanitation facility	42%	1%

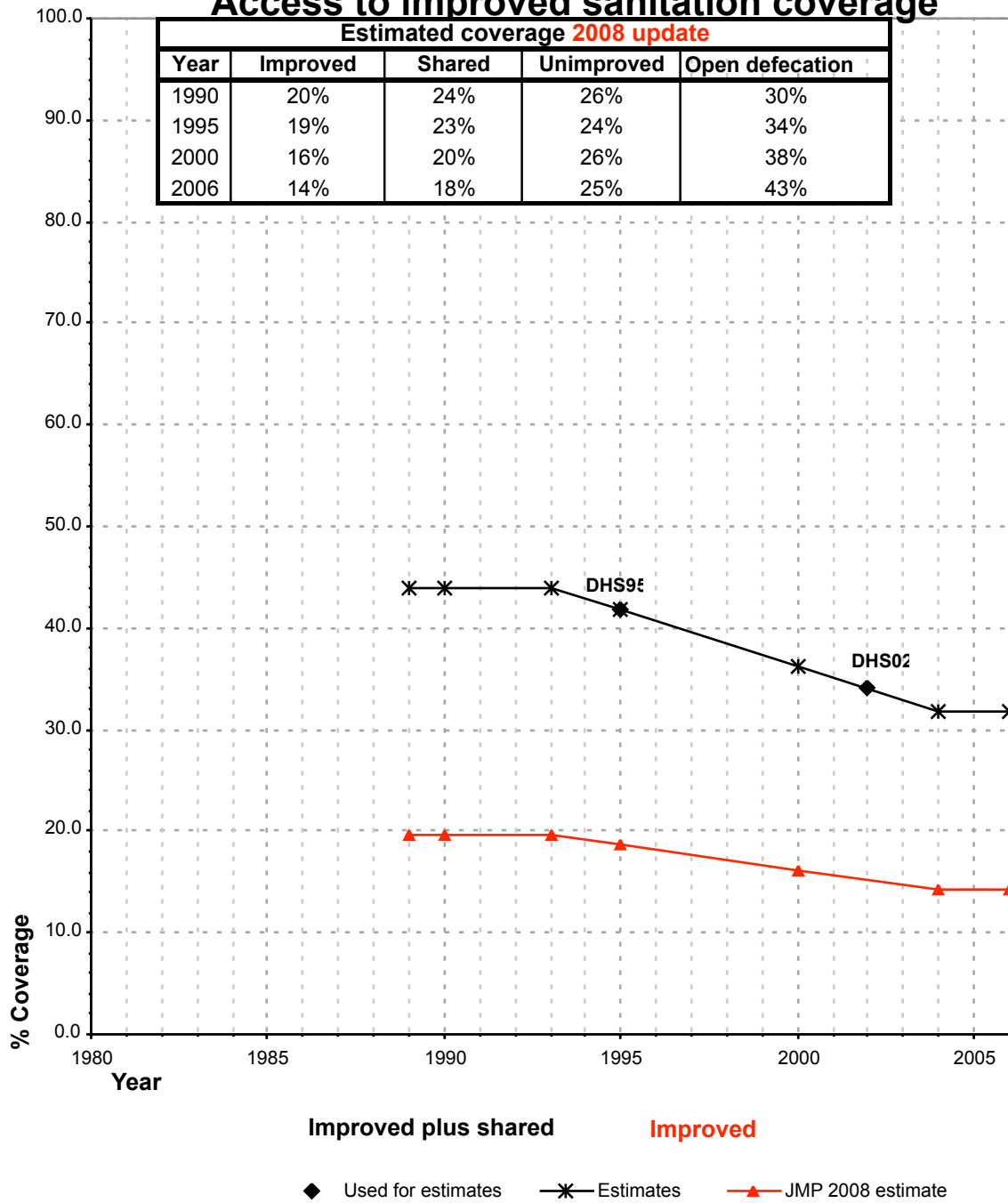
Source: DHS 1995, Eritrea

DHS	2002	
SANITATION	Urban	Rural
Proportion shared improved facilities/all improved facilities	0.55	0.12
Own flush toilet	23.0	0.4
Shared flush toilet	18.8	0.3
VIP latrine	3.2	1.5
Traditional pit toilet	15.6	1.3
No facility, bush,field	39.4	96.4
TOTAL	100.0	99.9
50% of traditional latrines estimated to be improved	7.8	0.7
% Use of an improved sanitation facility	34%	3%
% House connections		

Source: Eritrea Demographic and Health Survey 2002.

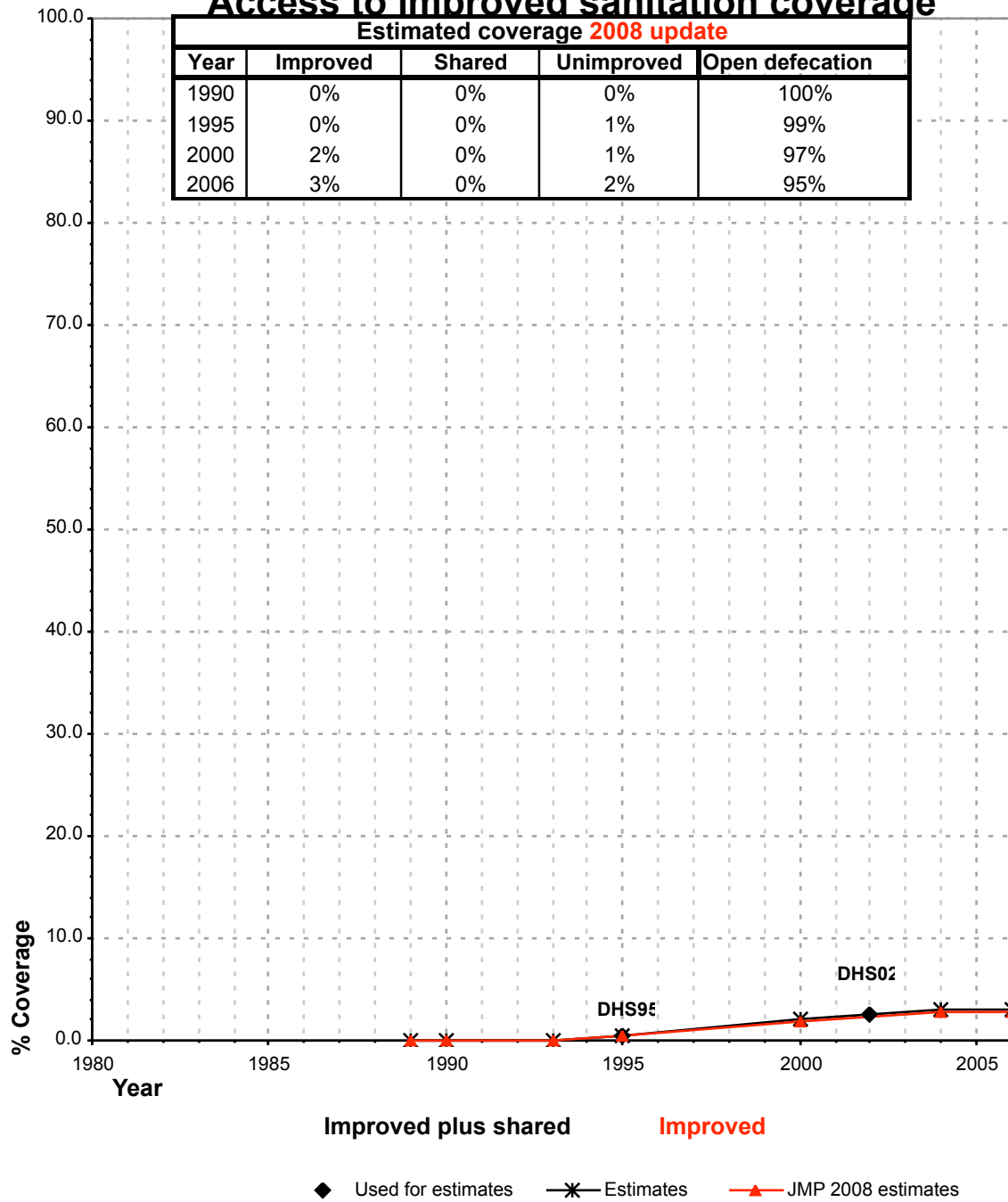
Eritrea			SANITATION								OPEN DEFECCATION			
			URBAN				RURAL							
			HC		Total		HC		Total		Urban		Rural	
Source	Code	Year	Used for estimates	Not used for estimates	Used for estimates	Not used for estimates	Used for estimates	Not used for estimates	Used for estimates	Not used for estimates	Used for estimates	Not used for estimates	Used for estimates	Not used for estimates
Demographic and Health Survey, Eritrea. 1995	DHS95	1995			41.7				0.6				33.9	99
Global Water Supply and Sanitation Assessment 2000. Water Supply and Sanitation Sector Questionnaire - 1999. (Form 6 sent to WHO)	JMP99	1999				#REF!					#REF!			
Eritrea Demographic and Health Survey 2002.	DHS02	2002			34.0				2.6				39.4	96.4

Eritrea - urban - Access to improved sanitation coverage



Shared facilities :
The proportion of the population using a shared improved sanitation facility is based on the DHS02

Eritrea - rural - Access to improved sanitation coverage



Shared facilities :

The proportion of the population using a shared improved sanitation facility is based on the DHS02