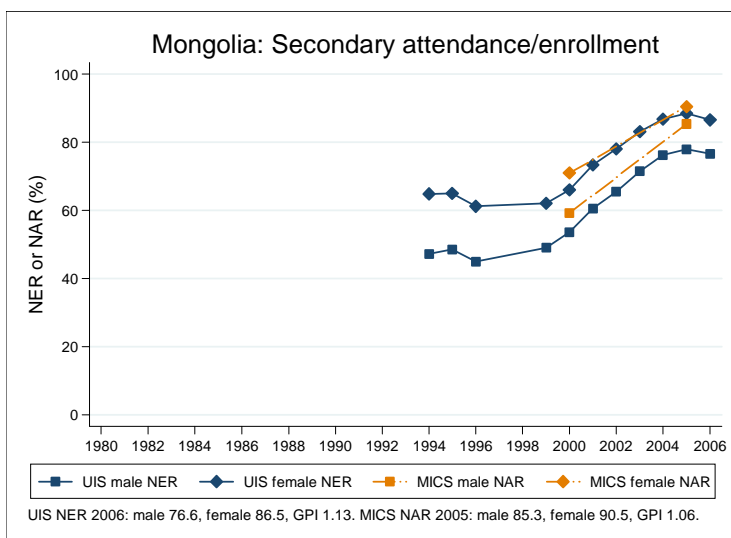
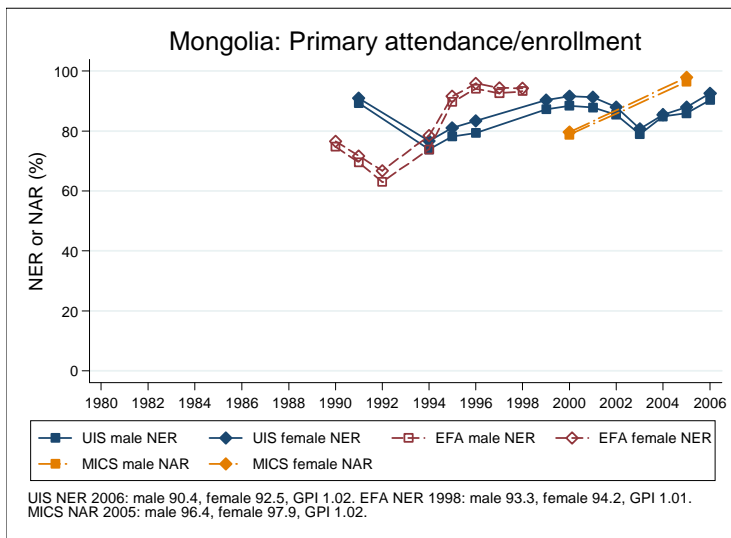
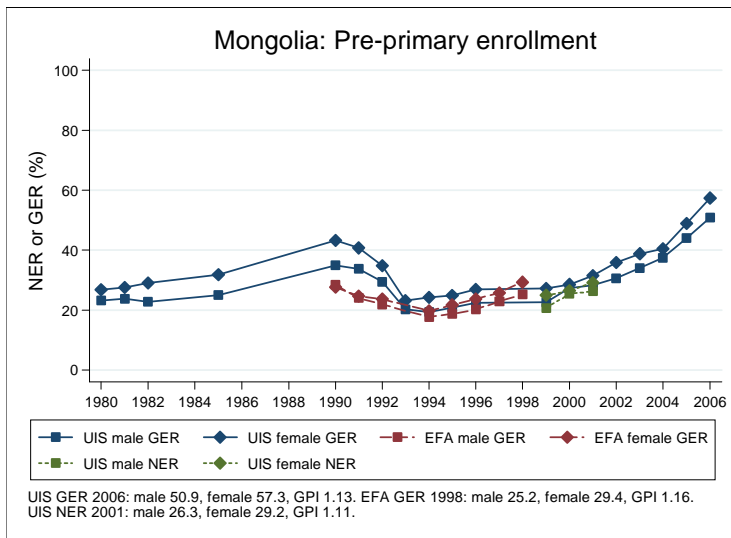
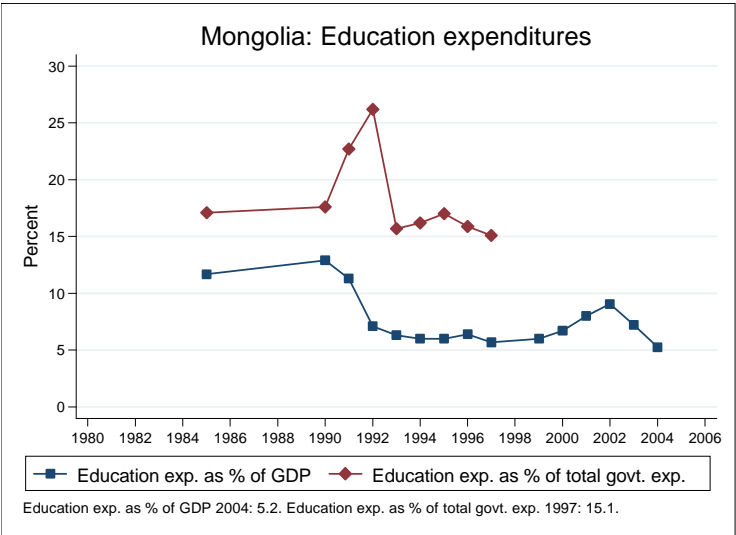
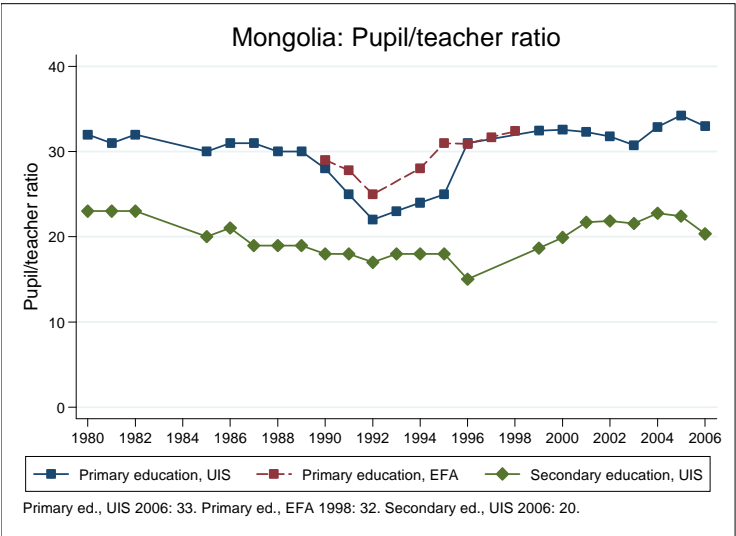
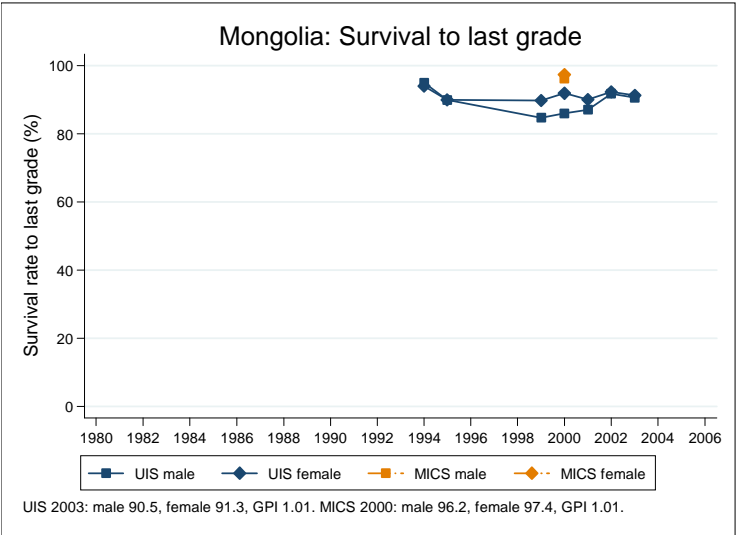


Education statistics: Mongolia

UNICEF, Division of Policy and Practice, Statistics and Monitoring Section, www.childinfo.org, May 2008





Administrative data: UNESCO Institute for Statistics

Mongolia

| Population (1,000) | Total | Male | Female |
|--|----------------------------|---------------------------|--------------------------|
| Preschool age, 2006 | 176 | 90 | 86 |
| Primary school age, 2006 | 248 | 127 | 121 |
| Secondary school age, 2006 | 368 | 187 | 181 |
| Total population, all ages, 2007 | 2629 | 1311 | 1318 |
| Official school age (years) | Entrance age | Graduation age | Duration |
| Preschool, 2006 | 3 | 6 | 4 |
| Primary school, 2006 | 7 | 11 | 5 |
| Secondary school, 2006 | 12 | 17 | 6 |
| Compulsory education, 2006 | 7 | 15 | 9 |
| Net enrolment ratio (%) | Total | Male | Female |
| Preschool NER, 2006 | 46.6 | 26.3 | 29.2 |
| Primary school NER, 2006 | 91.4 | 90.4 | 92.5 |
| Secondary school NER, 2006 | 81.5 | 76.6 | 86.5 |
| Gross enrolment ratio (%) | Total | Male | Female |
| Preschool GER, 2006 | 54.1 | 50.9 | 57.3 |
| Primary school GER, 2006 | 100.5 | 99.4 | 101.7 |
| Secondary school GER, 2006 | 89.5 | 84.4 | 94.7 |
| Entrance and transition (%) | Total | Male | Female |
| Primary net intake rate, 2004 | 59.1 | 60.6 | 57.6 |
| Primary gross intake rate, 2004 | 118.2 | 117.3 | 119.1 |
| Primary entrants with ECCE | | | |
| Transition rate primary-secondary, 2005 | 97.0 | 95.4 | 98.6 |
| Repetition and completion | Total | Male | Female |
| Primary repetition rate (%), 2004 | 0.6 | 0.7 | 0.6 |
| Secondary repetition rate (%), 2005 | 2.9 | 3.2 | 2.6 |
| Survival rate to grade 5 (%) | | | |
| Survival rate to last primary grade (%), 2003 | 90.9 | 90.5 | 91.3 |
| Primary completion rate (%), 2006 | 108.8 | 107.6 | 110.0 |
| School life expectancy (years), 2006 | 10.4 | 10.1 | 10.8 |
| Teaching staff | Pupil/teacher ratio | % trained teachers | % female teachers |
| Preschool, 2006 | 29.0 | 98.4 | 98.6 |
| Primary school, 2006 | 33.0 | 92.9 | 94.9 |
| Secondary school, 2006 | 20.3 | | 73.3 |
| Public expenditure per student as % of GDP per capita | | | |
| Primary school, 2004 | 14.0 | | |
| Secondary school, 2004 | 13.0 | | |
| Total public expenditure on education | | | |
| As % of GDP, 2004 | 5.2 | | |
| As % of total government expenditure, 1991 | 22.7 | | |

Data sources:

Population: United Nations Population Division, *World Population Prospects: The 2006 Revision*, March 2007.

Education: UNESCO Institute for Statistics, Data Centre, <http://stats.uis.unesco.org/unesco/ReportFolders/ReportFolders.aspx>, January 2008.

Survey data: Mongolia 2000 MICS

Mongolia

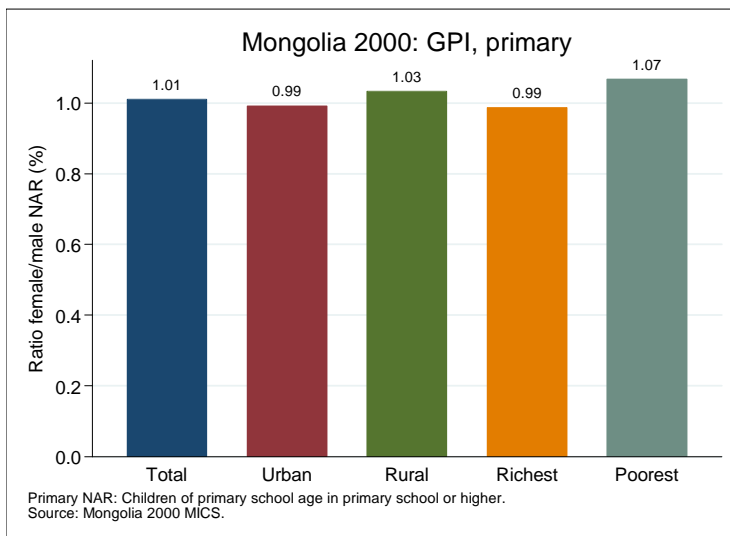
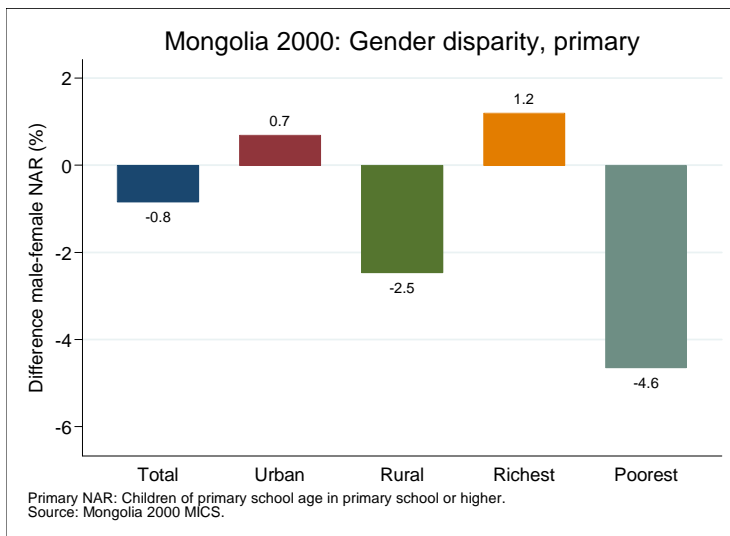
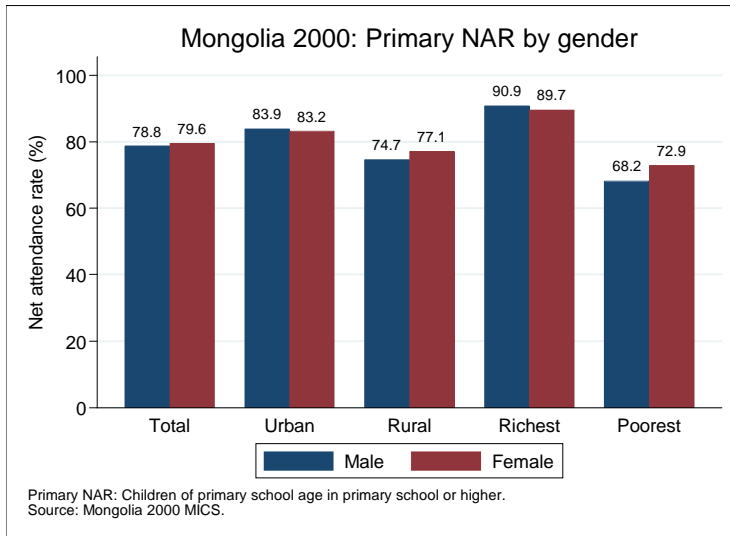
| Net attendance rate (%) | Total | Male | Female | Urban | Rural | Richest | Poorest |
|--------------------------------------|--------------|-------------|---------------|--------------|--------------|----------------|----------------|
| Primary school NAR | 79.2 | 78.8 | 79.6 | 83.6 | 75.9 | 90.2 | 70.6 |
| Secondary school NAR | 65.5 | 59.3 | 70.9 | 73.8 | 59.3 | 82.3 | 45.5 |
| Gross attendance rate (%) | Total | Male | Female | Urban | Rural | Richest | Poorest |
| Primary school GAR | 95.2 | 94.7 | 95.7 | 97.4 | 93.5 | 102.6 | 85.6 |
| Secondary school GAR | 67.8 | 61.8 | 73.0 | 77.3 | 60.7 | 85.0 | 47.7 |
| Primary age in school (%) | Total | Male | Female | Urban | Rural | Richest | Poorest |
| Primary school | 76.5 | 76.0 | 76.9 | 79.6 | 74.2 | 85.5 | 69.4 |
| Secondary school | 2.7 | 2.7 | 2.7 | 4.0 | 1.8 | 4.8 | 1.2 |
| Preschool | 5.2 | 5.6 | 4.8 | 4.7 | 5.6 | 3.0 | 5.8 |
| Non-formal education | | | | | | | |
| Secondary age in school (%) | Total | Male | Female | Urban | Rural | Richest | Poorest |
| Secondary school | 63.9 | 57.9 | 69.2 | 72.2 | 57.8 | 79.2 | 45.0 |
| Higher education | 1.6 | 1.4 | 1.8 | 1.6 | 1.6 | 3.1 | 0.5 |
| Primary school | 12.7 | 13.8 | 11.8 | 11.4 | 13.7 | 9.6 | 12.6 |
| Preschool | 0.2 | 0.2 | 0.2 | 0.2 | 0.2 | 0.2 | 0.0 |
| Non-formal education | | | | | | | |
| Entrance and transition (%) | Total | Male | Female | Urban | Rural | Richest | Poorest |
| Primary net intake rate | 34.4 | 32.5 | 36.1 | 42.3 | 29.0 | 51.3 | 20.3 |
| Primary gross intake rate | 77.1 | 80.4 | 74.0 | 84.9 | 71.7 | 92.9 | 64.5 |
| Primary entrants with ECCE | 71.2 | 70.0 | 72.3 | 78.8 | 65.0 | 86.7 | 49.4 |
| Transition rate prim.-sec. | 92.7 | 93.8 | 91.7 | 97.1 | 90.0 | 98.5 | 94.4 |
| Repetition and completion (%) | Total | Male | Female | Urban | Rural | Richest | Poorest |
| Primary repetition rate | 4.5 | 4.1 | 4.8 | 2.0 | 6.3 | 0.9 | 5.5 |
| Primary dropout rate | 1.1 | 1.3 | 1.0 | 0.7 | 1.5 | 0.5 | 2.7 |
| Secondary repetition rate | 0.0 | 0.0 | 0.0 | 0.0 | 0.0 | 0.0 | 0.0 |
| Secondary dropout rate | 2.3 | 3.2 | 1.6 | 1.7 | 2.8 | 0.4 | 4.4 |
| Survival rate to grade 5 | 95.0 | 94.4 | 95.5 | 96.9 | 93.5 | 98.6 | 88.4 |
| Survival rate to last prim. grade | 96.8 | 96.2 | 97.4 | 98.6 | 95.4 | 98.6 | 89.7 |

Primary school NAR: children of primary school age in primary school or higher.

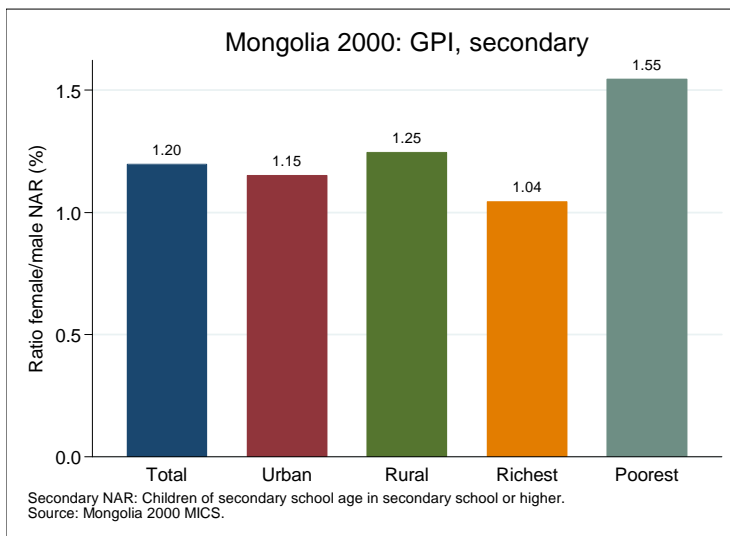
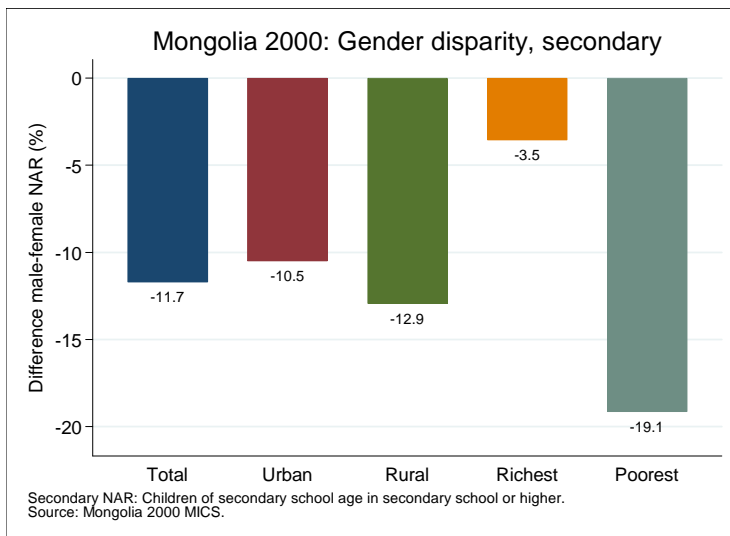
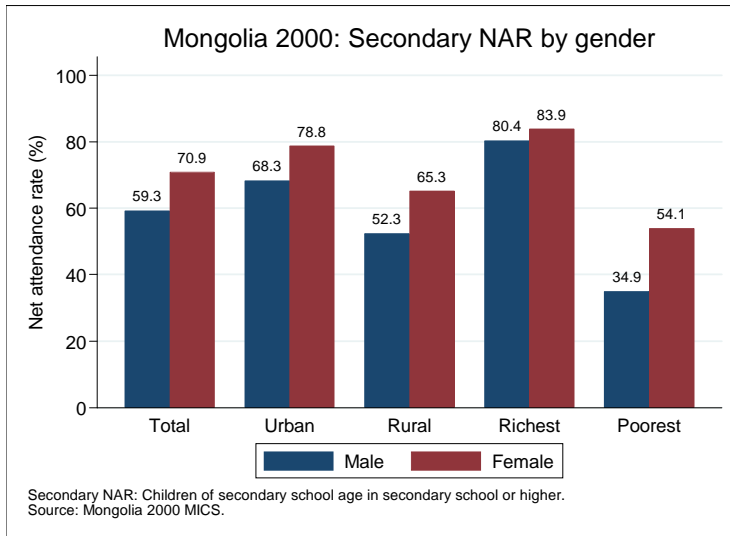
Secondary school NAR: children of secondary school age in secondary school or higher.

Data source: Mongolia 2000 MICS.

Gender disparity in primary school (survey data)



Gender disparity in secondary school (survey data)



Projections to 2015

