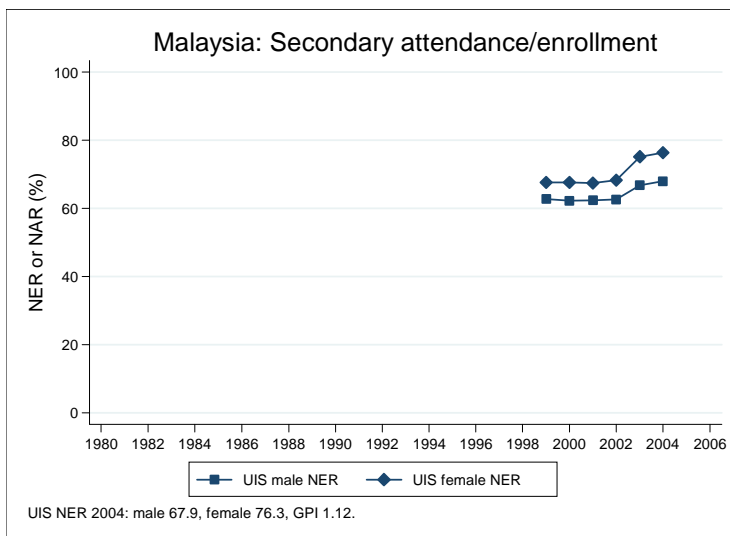
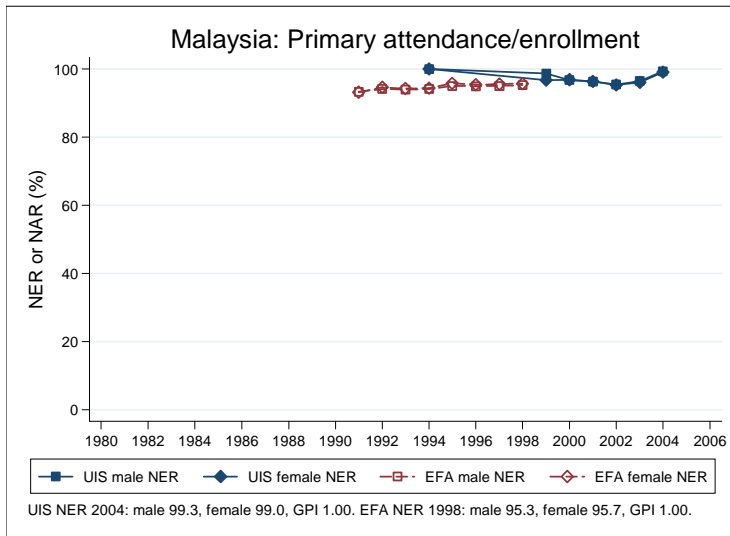
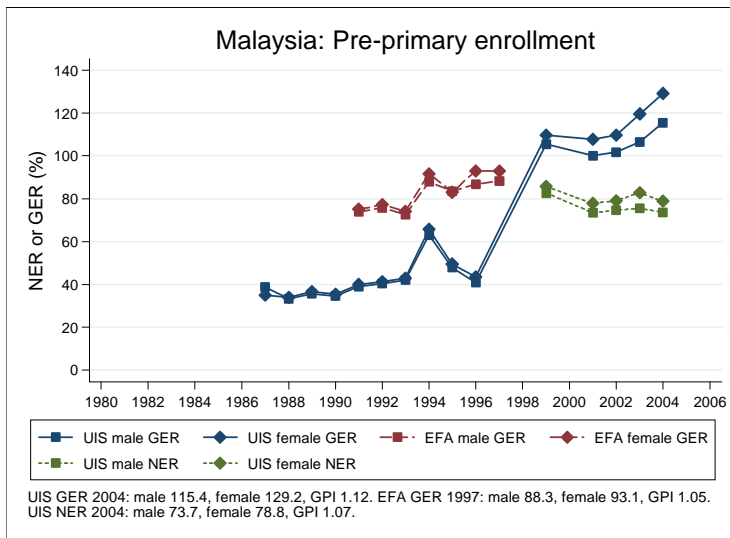
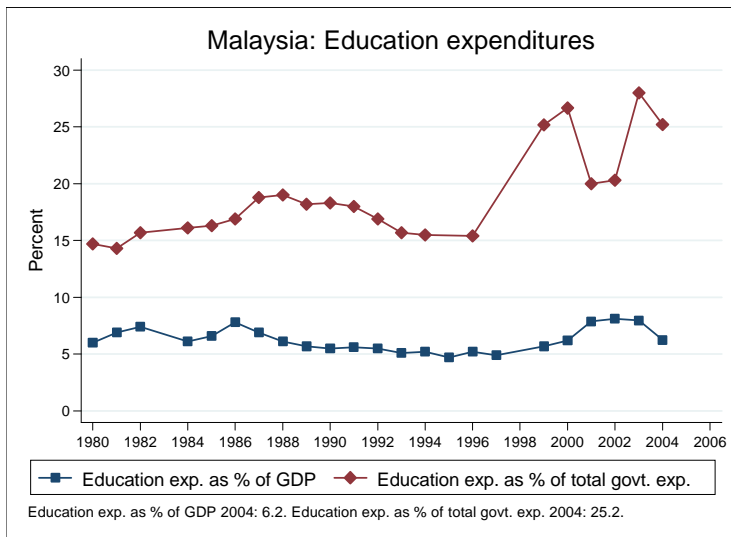
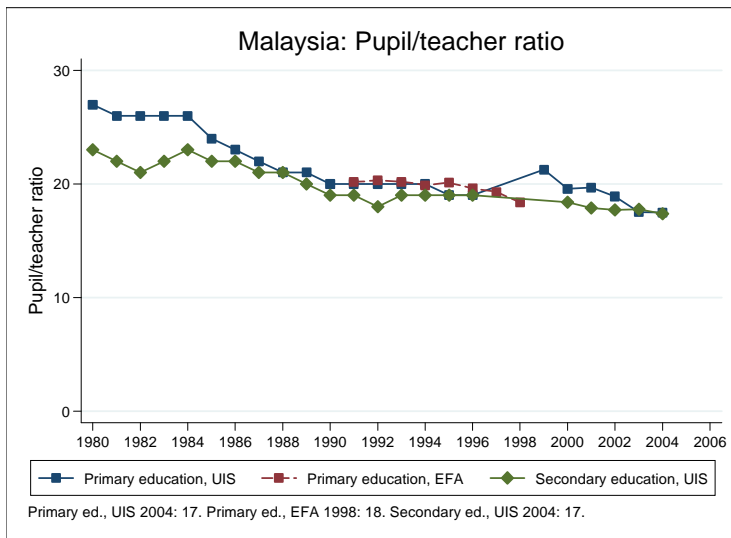
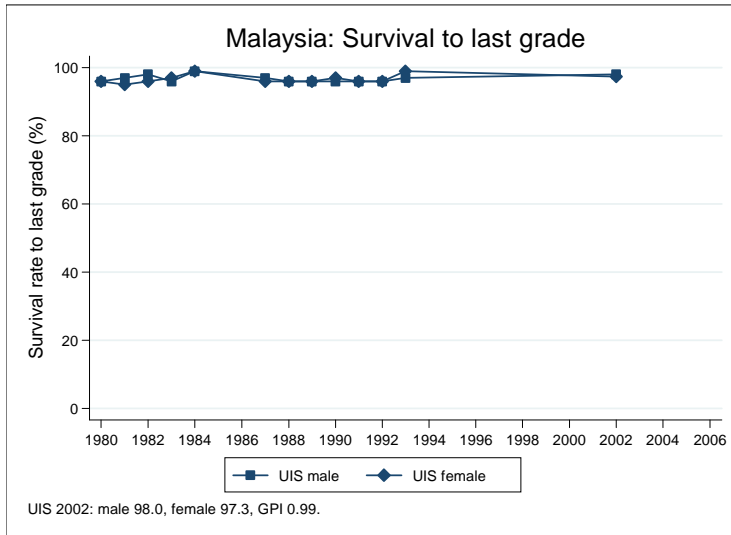


## Education statistics: Malaysia

UNICEF, Division of Policy and Practice, Statistics and Monitoring Section, www.childinfo.org, May 2008





## Administrative data: UNESCO Institute for Statistics

### Malaysia

<b>Population (1,000)</b>	<b>Total</b>	<b>Male</b>	<b>Female</b>
Preschool age, 2006	536	276	260
Primary school age, 2006	3201	1642	1558
Secondary school age, 2006	3634	1854	1779
Total population, all ages, 2007	26572	13497	13075
<b>Official school age (years)</b>	<b>Entrance age</b>	<b>Graduation age</b>	<b>Duration</b>
Preschool, 2005	5	5	1
Primary school, 2005	6	11	6
Secondary school, 2005	12	18	7
Compulsory education, 2005	6	11	6
<b>Net enrolment ratio (%)</b>	<b>Total</b>	<b>Male</b>	<b>Female</b>
Preschool NER, 2004	76.2	73.7	78.8
Primary school NER, 2004	99.2	99.3	99.0
Secondary school NER, 2004	72.0	67.9	76.3
<b>Gross enrolment ratio (%)</b>	<b>Total</b>	<b>Male</b>	<b>Female</b>
Preschool GER, 2004	122.1	115.4	129.2
Primary school GER, 2004	99.5	99.7	99.3
Secondary school GER, 2004	72.3	68.3	76.5
<b>Entrance and transition (%)</b>	<b>Total</b>	<b>Male</b>	<b>Female</b>
Primary net intake rate			
Primary gross intake rate, 2004	101.2	101.6	100.8
Primary entrants with ECCE, 2004	74.1	70.7	77.7
Transition rate primary-secondary, 1999	99.0	98.1	100.0
<b>Repetition and completion</b>	<b>Total</b>	<b>Male</b>	<b>Female</b>
Primary repetition rate (%)			
Secondary repetition rate (%)			
Survival rate to grade 5 (%), 2002	98.4	98.7	98.0
Survival rate to last primary grade (%), 2002	97.7	98.0	97.3
Primary completion rate (%), 2004	95.1	95.2	94.9
School life expectancy (years), 2004	11.0	10.7	11.3
<b>Teaching staff</b>	<b>Pupil/teacher ratio</b>	<b>% trained teachers</b>	<b>% female teachers</b>
Preschool, 2004	22.8		96.1
Primary school, 2004	17.5		66.9
Secondary school, 2004	17.4	52.7	63.6
<b>Public expenditure per student as % of GDP per capita</b>			
Primary school, 2004	14.5		
Secondary school, 2004	21.1		
<b>Total public expenditure on education</b>			
As % of GDP, 2004	6.2		
As % of total government expenditure, 2004	25.2		

#### Data sources:

*Population:* United Nations Population Division, *World Population Prospects: The 2006 Revision*, March 2007.

*Education:* UNESCO Institute for Statistics, Data Centre, <http://stats.uis.unesco.org/unesco/ReportFolders/ReportFolders.aspx>, January 2008.