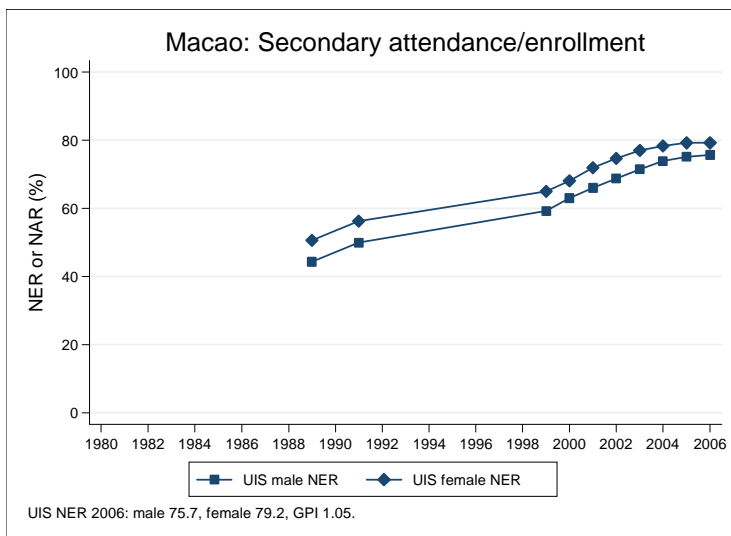
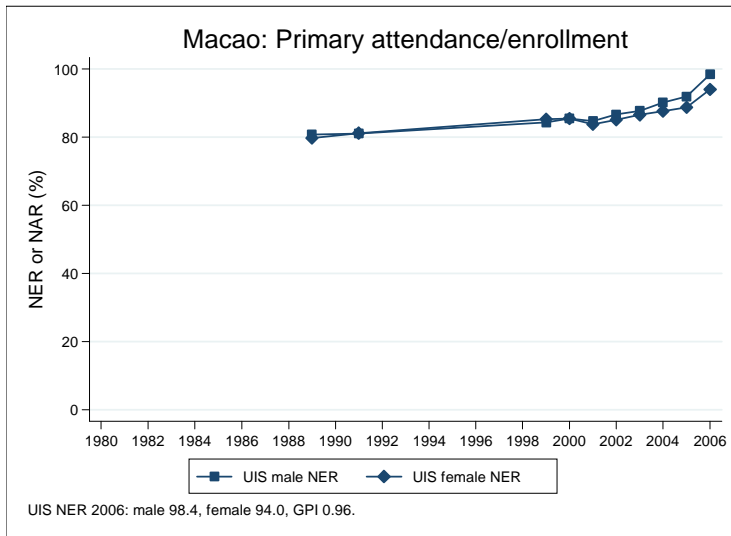
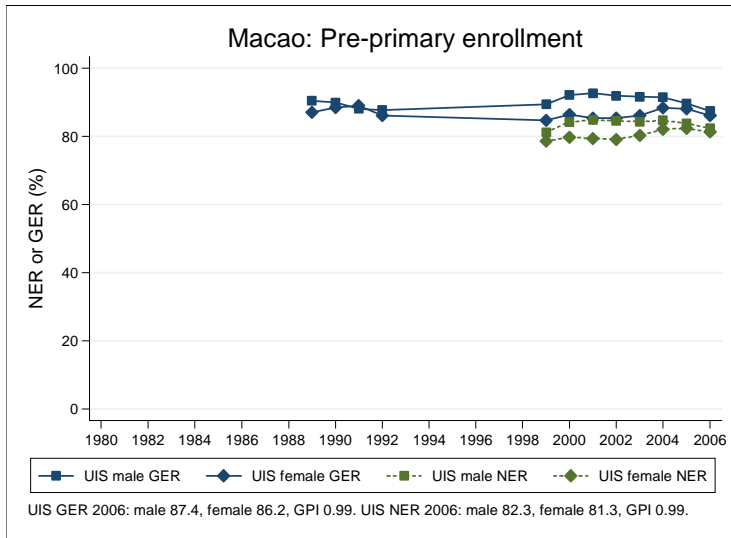
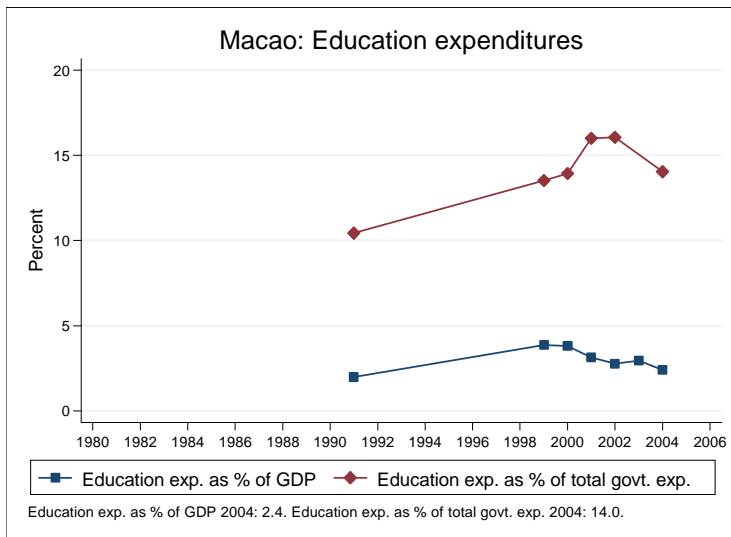
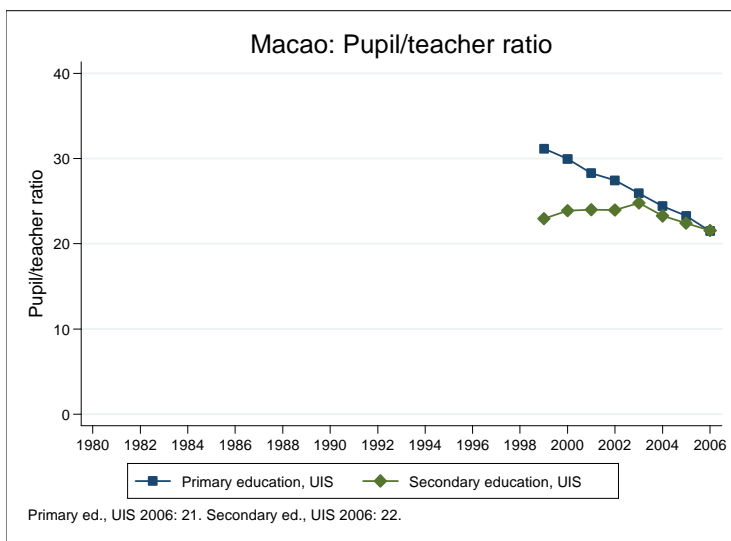
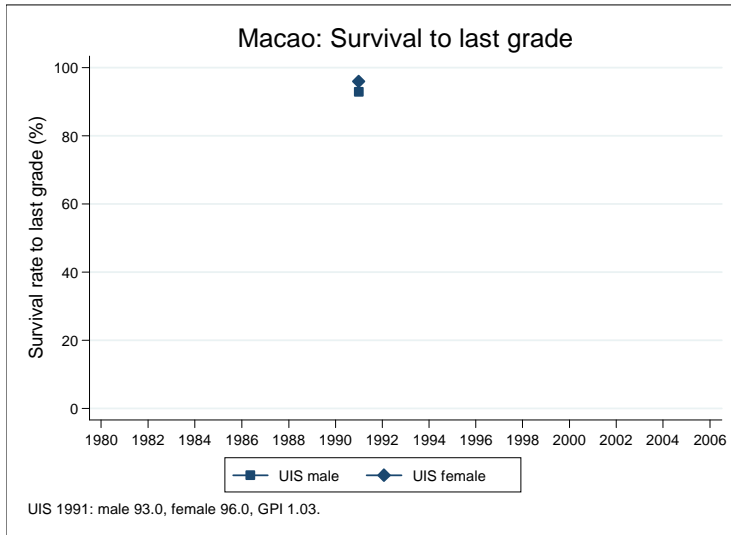


Education statistics: Macao

UNICEF, Division of Policy and Practice, Statistics and Monitoring Section, www.childinfo.org, May 2008





Administrative data: UNESCO Institute for Statistics

Macao

| Population (1,000) | Total | Male | Female |
|--|----------------------------|---------------------------|--------------------------|
| Preschool age, 2006 | 12 | 6 | 6 |
| Primary school age, 2006 | 33 | 17 | 16 |
| Secondary school age, 2006 | 47 | 24 | 23 |
| Total population, all ages, 2007 | 481 | 230 | 251 |
| Official school age (years) | Entrance age | Graduation age | Duration |
| Preschool, 2006 | 3 | 5 | 3 |
| Primary school, 2006 | 6 | 11 | 6 |
| Secondary school, 2006 | 12 | 17 | 6 |
| Compulsory education, 2006 | 5 | 14 | 10 |
| Net enrolment ratio (%) | Total | Male | Female |
| Preschool NER, 2006 | 81.8 | 82.3 | 81.3 |
| Primary school NER, 2006 | 96.3 | 98.4 | 94.0 |
| Secondary school NER, 2006 | 77.5 | 75.7 | 79.2 |
| Gross enrolment ratio (%) | Total | Male | Female |
| Preschool GER, 2006 | 86.8 | 87.4 | 86.2 |
| Primary school GER, 2006 | 105.6 | 109.0 | 101.9 |
| Secondary school GER, 2006 | 97.9 | 97.7 | 98.2 |
| Entrance and transition (%) | Total | Male | Female |
| Primary net intake rate, 2006 | 78.4 | 77.5 | 79.4 |
| Primary gross intake rate, 2006 | 95.3 | 94.3 | 96.2 |
| Primary entrants with ECCE, 2006 | 96.9 | 97.1 | 96.7 |
| Transition rate primary-secondary, 2005 | 89.8 | 87.0 | 92.9 |
| Repetition and completion | Total | Male | Female |
| Primary repetition rate (%), 2006 | 5.7 | 7.0 | 4.2 |
| Secondary repetition rate (%), 2006 | 10.3 | 12.4 | 8.1 |
| Survival rate to grade 5 (%), 2002 | 99.7 | 99.4 | 100.0 |
| Survival rate to last primary grade (%) | | | |
| Primary completion rate (%), 2006 | 103.6 | 104.3 | 102.8 |
| School life expectancy (years), 2006 | 12.2 | 12.4 | 12.0 |
| Teaching staff | Pupil/teacher ratio | % trained teachers | % female teachers |
| Preschool, 2006 | 22.6 | 97.5 | 100.0 |
| Primary school, 2006 | 21.5 | 88.9 | 87.4 |
| Secondary school, 2006 | 21.5 | 68.0 | 58.9 |
| Public expenditure per student as % of GDP per capita | | | |
| Primary school, 2003 | 7.9 | | |
| Secondary school, 2000 | 12.0 | | |
| Total public expenditure on education | | | |
| As % of GDP, 2004 | 2.4 | | |
| As % of total government expenditure, 2004 | 14.0 | | |

Data sources:

Population: United Nations Population Division, *World Population Prospects: The 2006 Revision*, March 2007.

Education: UNESCO Institute for Statistics, Data Centre, <http://stats.uis.unesco.org/unesco/ReportFolders/ReportFolders.aspx>, January 2008.