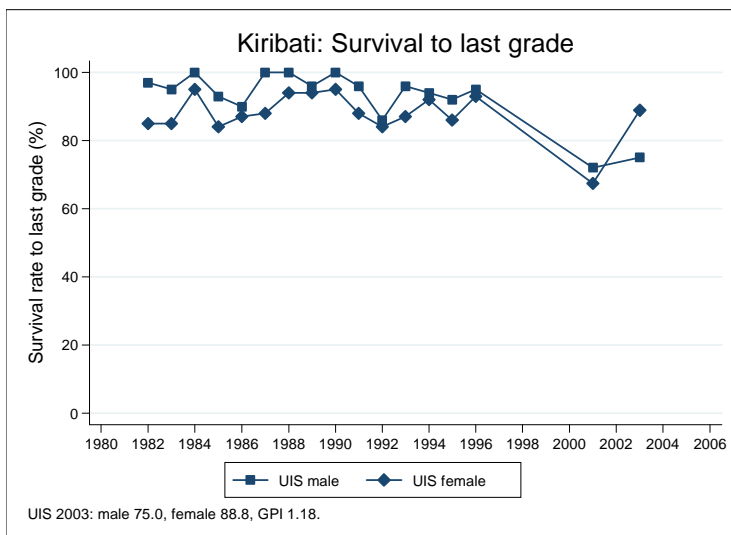
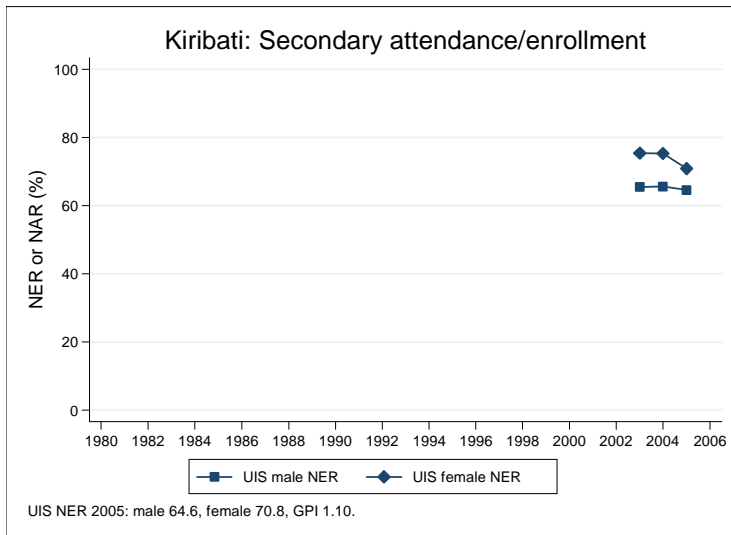
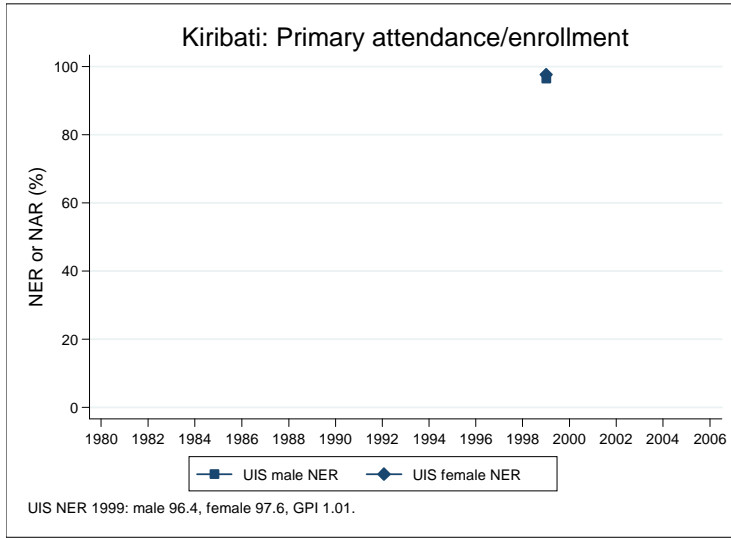
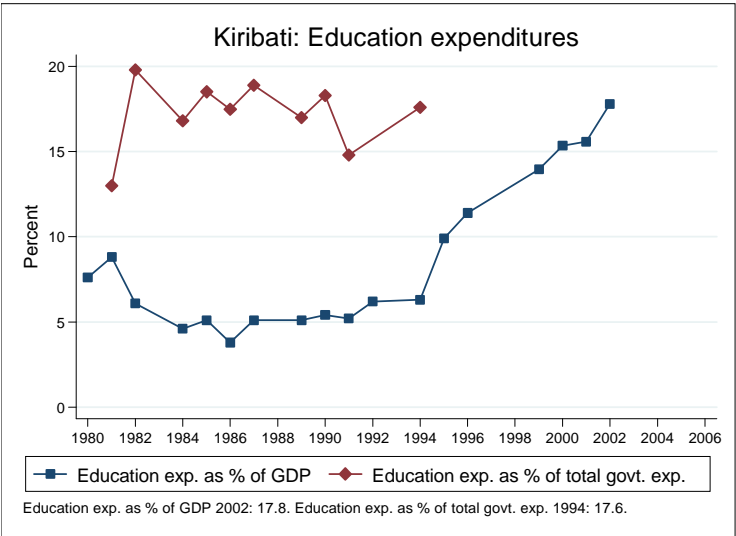
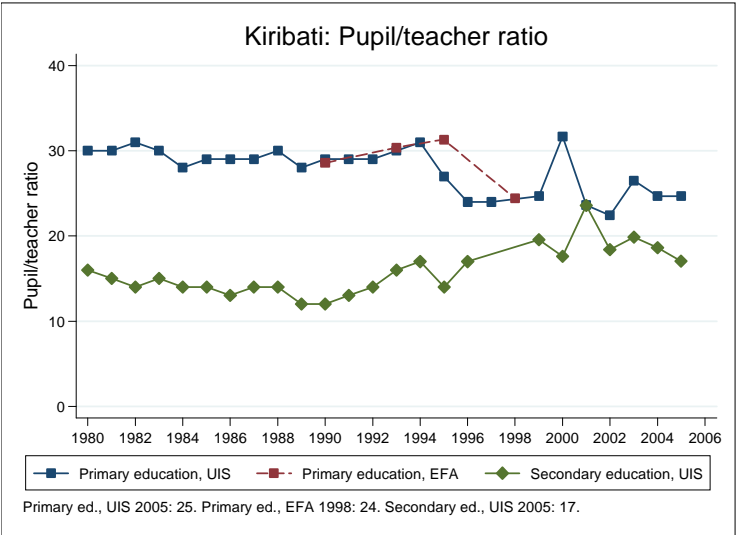


Education statistics: Kiribati

UNICEF, Division of Policy and Practice, Statistics and Monitoring Section, www.childinfo.org, May 2008





Administrative data: UNESCO Institute for Statistics

Kiribati

Population (1,000)	Total	Male	Female
Preschool age, 2005	7	3	3
Primary school age, 2005	14	7	7
Secondary school age, 2005	13	7	6
Total population, all ages			
Official school age (years)	Entrance age	Graduation age	Duration
Preschool, 2005	3	5	3
Primary school, 2005	6	11	6
Secondary school, 2005	12	17	6
Compulsory education, 2005	6	15	10
Net enrolment ratio (%)	Total	Male	Female
Preschool NER			
Primary school NER, 2002	97.4	96.4	97.6
Secondary school NER, 2005	67.6	64.6	70.8
Gross enrolment ratio (%)	Total	Male	Female
Preschool GER, 2004	74.6		
Primary school GER, 2005	112.2	111.3	113.2
Secondary school GER, 2005	87.1	81.9	92.5
Entrance and transition (%)	Total	Male	Female
Primary net intake rate			
Primary gross intake rate, 2005	114.8	114.4	115.3
Primary entrants with ECCE			
Transition rate primary-secondary			
Repetition and completion	Total	Male	Female
Primary repetition rate (%), 1991	0.6	0.6	0.6
Secondary repetition rate (%)			
Survival rate to grade 5 (%), 2003	81.9	76.2	88.4
Survival rate to last primary grade (%), 2003	81.4	75.0	88.8
Primary completion rate (%), 2005	128.7	132.4	125.0
School life expectancy (years), 2005	12.1	11.7	12.5
Teaching staff	Pupil/teacher ratio	% trained teachers	% female teachers
Preschool			
Primary school, 2005	24.7		75.2
Secondary school, 2005	17.0		47.4
Public expenditure per student as % of GDP per capita			
Primary school, 2001	31.7		
Secondary school			
Total public expenditure on education			
As % of GDP, 2002	17.8		
As % of total government expenditure			

Data sources:

Population: United Nations Population Division, *World Population Prospects: The 2006 Revision*, March 2007.

Education: UNESCO Institute for Statistics, Data Centre, <http://stats.uis.unesco.org/unesco/ReportFolders/ReportFolders.aspx>, January 2008.