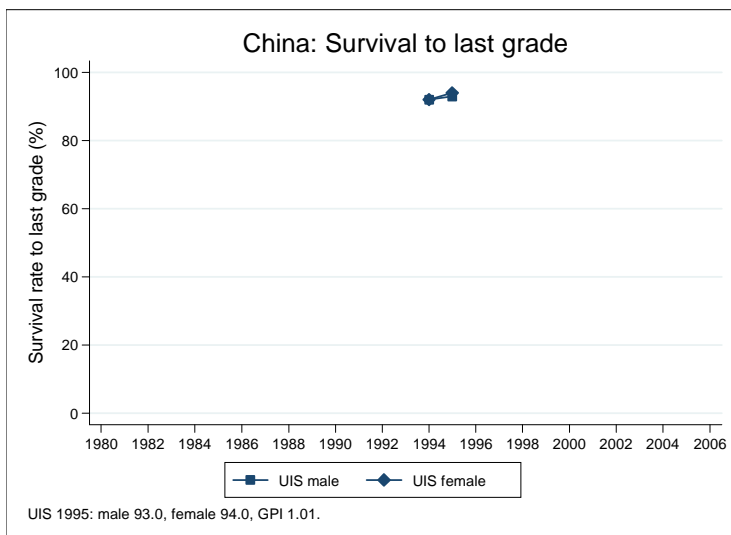
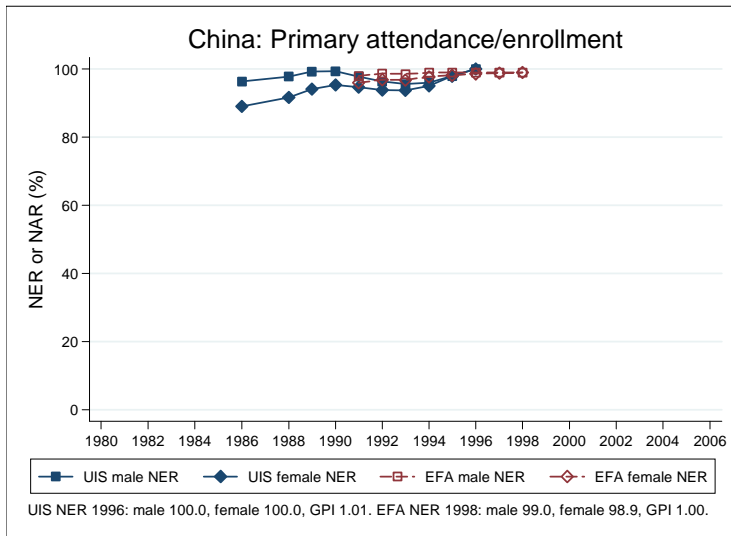
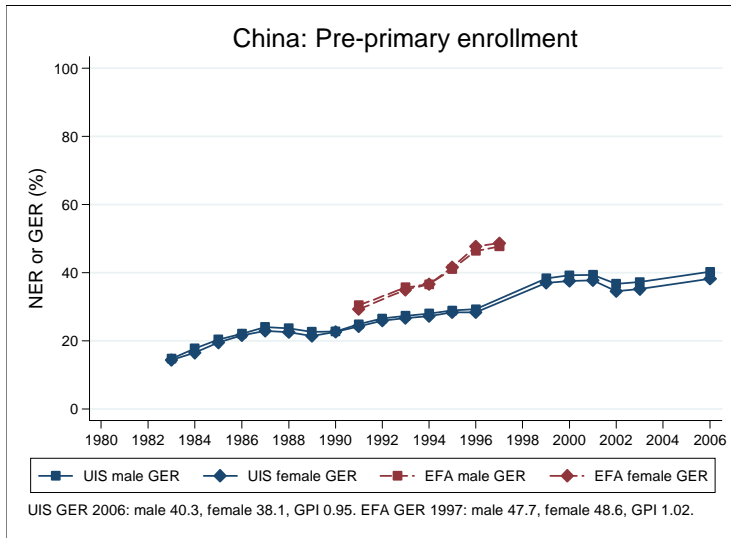
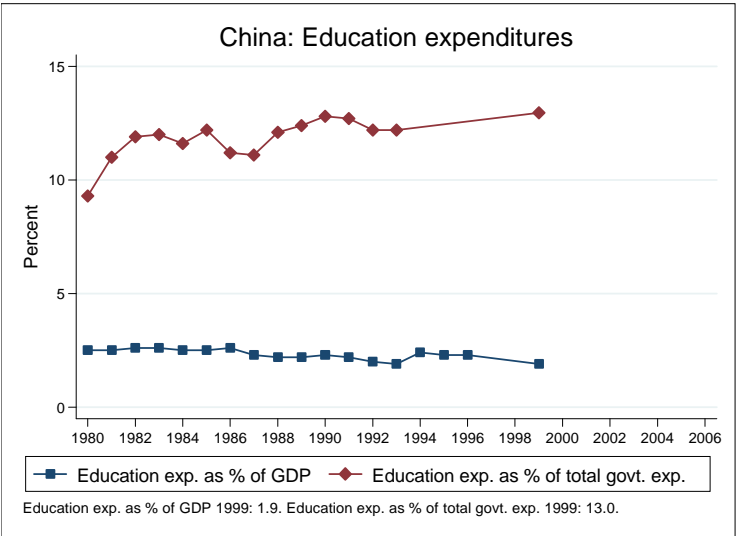
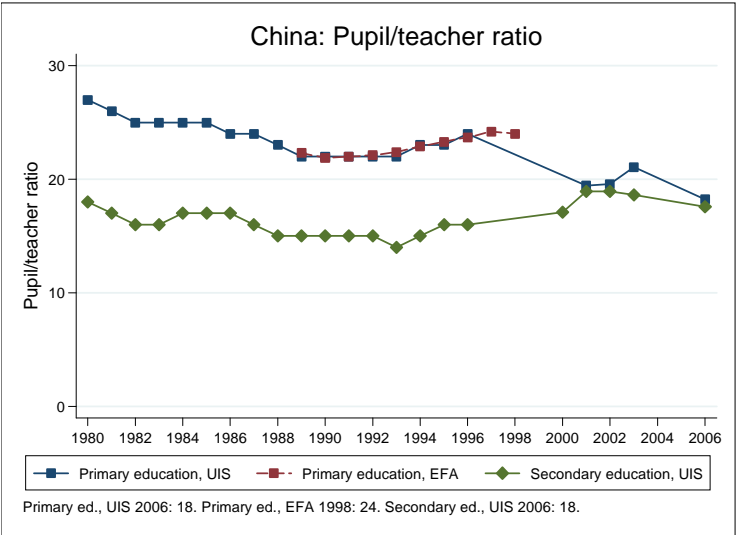


Education statistics: China

UNICEF, Division of Policy and Practice, Statistics and Monitoring Section, www.childinfo.org, May 2008





Administrative data: UNESCO Institute for Statistics

China

Population (1,000)	Total	Male	Female
Preschool age, 2006	55465	29680	25785
Primary school age, 2006	97931	51977	45954
Secondary school age, 2006	134016	70415	63601
Total population, all ages, 2007	1328630	686153	642477
Official school age (years)	Entrance age	Graduation age	Duration
Preschool, 2006	4	6	3
Primary school, 2006	7	11	5
Secondary school, 2006	12	17	6
Compulsory education, 2006	6	14	9
Net enrolment ratio (%)	Total	Male	Female
Preschool NER			
Primary school NER, 1991	98.0	99.7	96.1
Secondary school NER			
Gross enrolment ratio (%)	Total	Male	Female
Preschool GER, 2006	39.3	40.3	38.1
Primary school GER, 2006	111.2	111.5	110.9
Secondary school GER, 2006	75.5	75.2	75.8
Entrance and transition (%)	Total	Male	Female
Primary net intake rate			
Primary gross intake rate, 2006	87.7	88.1	87.2
Primary entrants with ECCE			
Transition rate primary-secondary			
Repetition and completion	Total	Male	Female
Primary repetition rate (%), 1991	6.1		
Secondary repetition rate (%)			
Survival rate to grade 5 (%), 1991	86.0	57.6	78.3
Survival rate to last primary grade (%)			
Primary completion rate (%), 1991	105.2		
School life expectancy (years), 2006	10.1	10.1	10.1
Teaching staff	Pupil/teacher ratio	% trained teachers	% female teachers
Preschool, 2006	22.9		97.7
Primary school, 2006	18.3	96.8	55.2
Secondary school, 2006	17.5		45.0
Public expenditure per student as % of GDP per capita			
Primary school			
Secondary school, 1999	11.5		
Total public expenditure on education			
As % of GDP, 1999	1.9		
As % of total government expenditure, 1999	13.0		

Data sources:

Population: United Nations Population Division, *World Population Prospects: The 2006 Revision*, March 2007.

Education: UNESCO Institute for Statistics, Data Centre, <http://stats.uis.unesco.org/unesco/ReportFolders/ReportFolders.aspx>, January 2008.