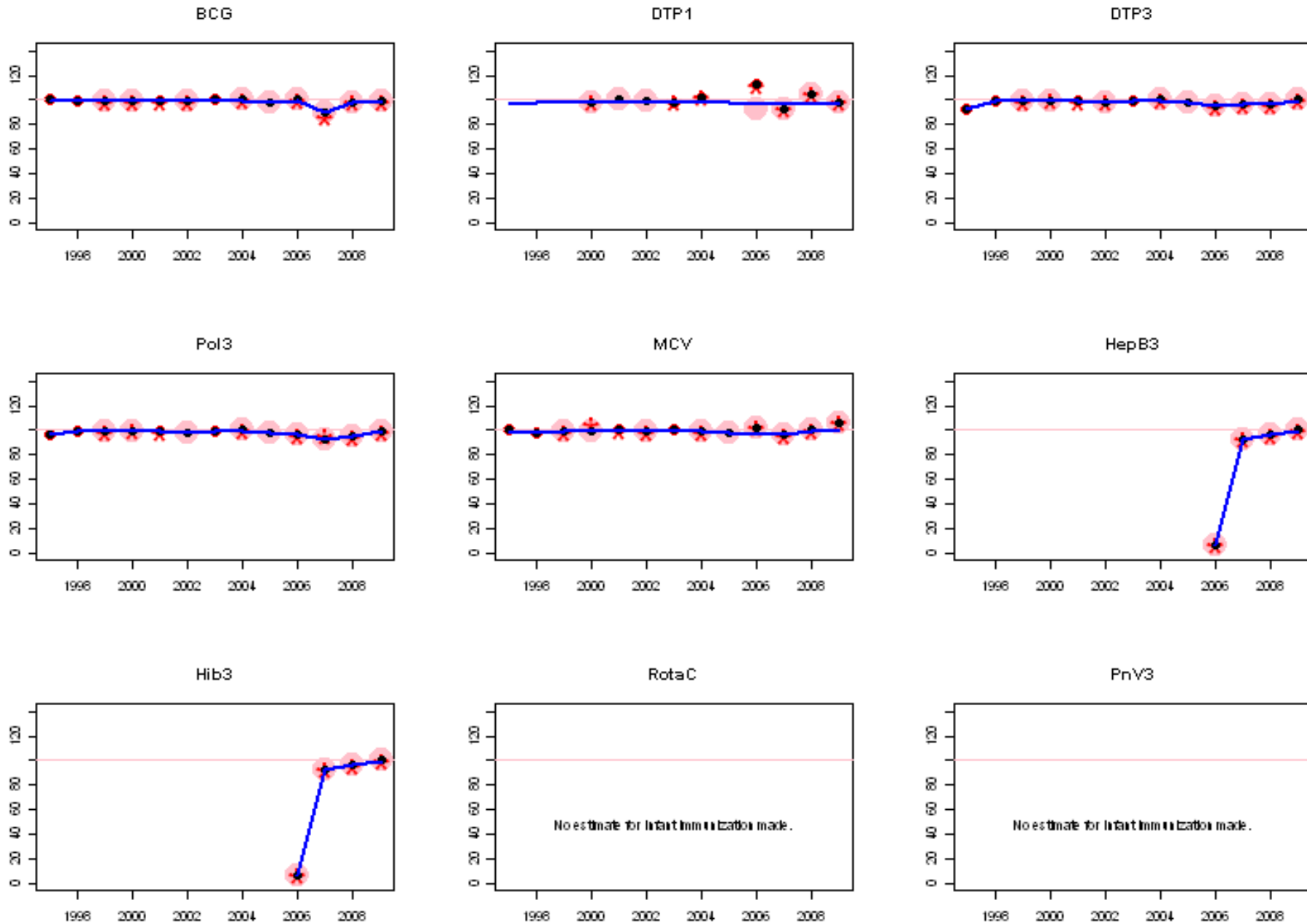
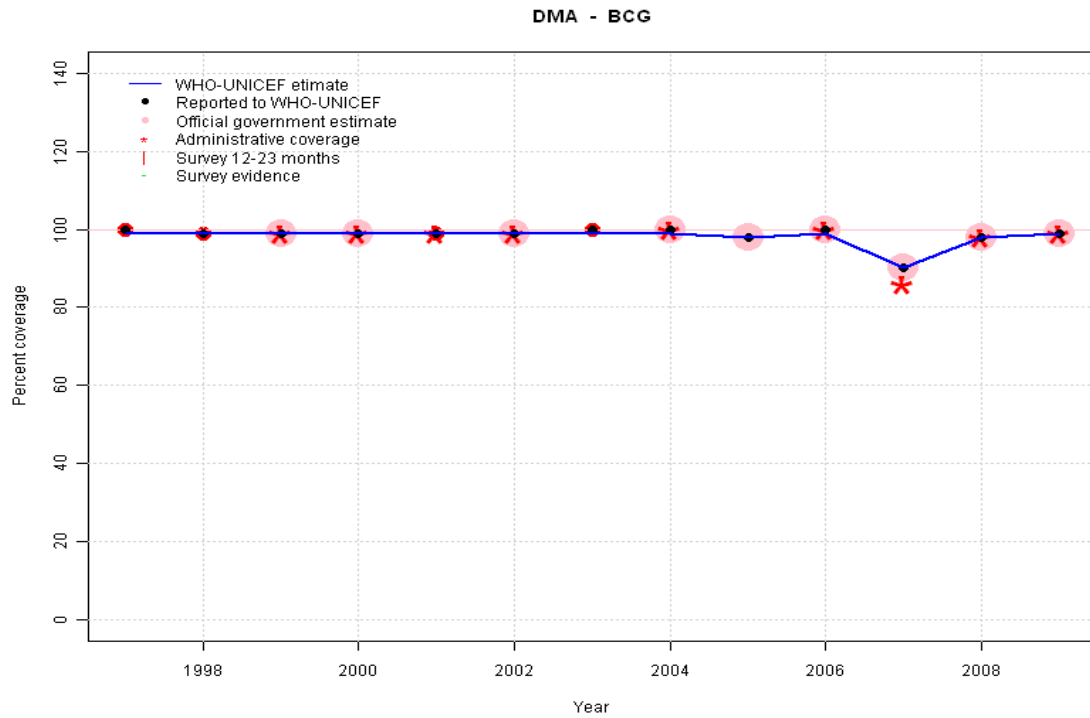


Dominica: WHO and UNICEF estimates of immunization coverage, 1997 - 2009



Dominica - BCG

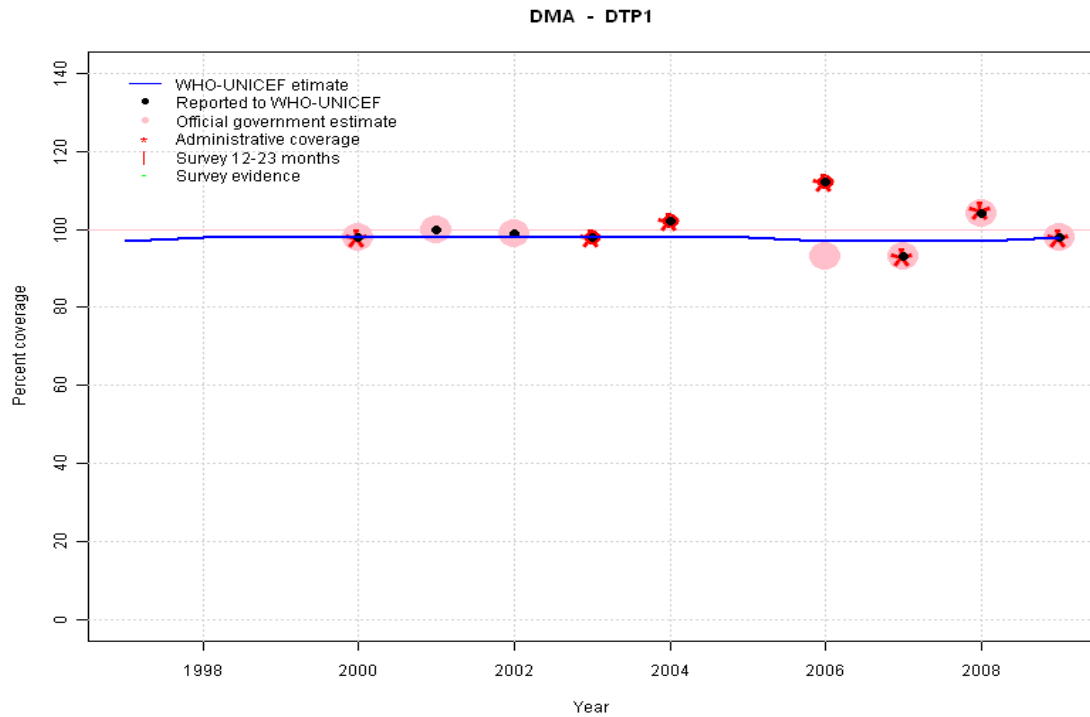
Description:



1997: Legacy estimate.
 1998: Estimate based on reported data.
 1999: Estimate based on reported data.
 2000: Estimate based on reported data.
 2001: Estimate based on reported data.
 2002: Estimate based on reported data.
 2003: Estimate based on reported data.
 2004: Estimate based on reported data.
 2005: Estimate based on reported data.
 2006: Estimate based on reported data.
 2007: Estimate based on reported data.
 2008: Estimate based on reported data.
 2009: Estimate based on reported data.

	1997	1998	1999	2000	2001	2002	2003	2004	2005	2006	2007	2008	2009
Estimate	99	99	99	99	99	99	99	99	98	99	90	98	99
Reported	100	99	99	99	99	99	100	100	98	100	90	98	99
Official	NA	NA	99	99	NA	99	NA	100	98	100	90	98	99
Administrative	NA	NA	99	99	99	99	NA	100	NA	100	86	98	99
Survey	NA	NA	NA	NA	NA	NA	NA	NA	NA	NA	NA	NA	NA

Dominica - DTP1



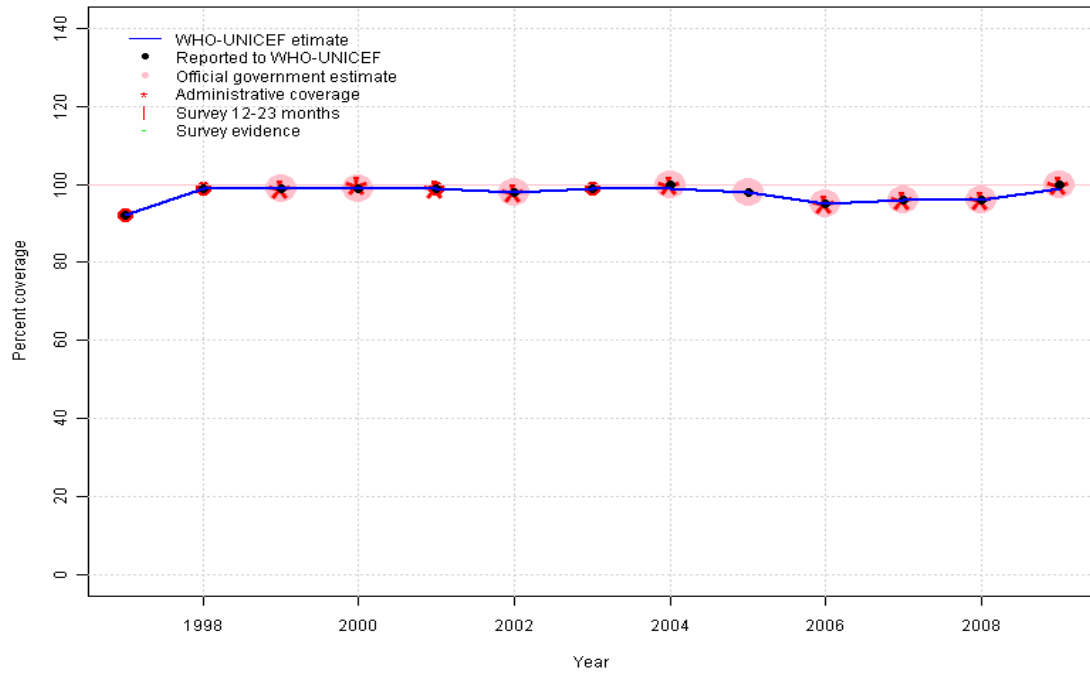
	1997	1998	1999	2000	2001	2002	2003	2004	2005	2006	2007	2008	2009
Estimate	97	98	98	98	98	98	98	98	98	97	97	97	98
Reported	NA	NA	NA	98	100	99	98	102	NA	112	93	104	98
Official	NA	NA	NA	98	100	99	NA	NA	NA	93	93	104	98
Administrative	NA	NA	NA	98	NA	NA	98	102	NA	112	93	105	98
Survey	NA	NA	NA	NA	NA	NA	NA	NA	NA	NA	NA	NA	NA

Description:

- 1997: Legacy estimate.
- 1998: Estimated DTP3 greater than estimated DTP1; DTP1 estimate based on the relationship between DTP1 and DTP3 from 282 surveys.
- 1999: Estimated DTP3 greater than estimated DTP1; DTP1 estimate based on the relationship between DTP1 and DTP3 from 282 surveys.
- 2000: Estimated DTP3 greater than estimated DTP1; DTP1 estimate based on the relationship between DTP1 and DTP3 from 282 surveys.
- 2001: Estimated DTP3 greater than estimated DTP1; DTP1 estimate based on the relationship between DTP1 and DTP3 from 282 surveys.
- 2002: Estimate calibrated to 1997 level (97 percent) and reported coverage (99 percent).
- 2003: Estimated DTP3 greater than estimated DTP1; DTP1 estimate based on the relationship between DTP1 and DTP3 from 282 surveys.
- 2004: Estimated DTP3 greater than estimated DTP1; DTP1 estimate based on the relationship between DTP1 and DTP3 from 282 surveys.
- 2005: Estimated DTP3 greater than estimated DTP1; DTP1 estimate based on the relationship between DTP1 and DTP3 from 282 surveys.
- 2006: Estimate calibrated to 1997 level (97 percent) and reported coverage (98 percent). 2006 reported data (112 percent) ignored; greater than 100 percent.
- 2007: Estimate calibrated to 1997 level (97 percent) and reported coverage (98 percent). 2007 reported data (93 percent) inconsistent with data from other years.
- 2008: Estimate calibrated to 1997 level (97 percent) and reported coverage (98 percent). 2008 reported data (104 percent) ignored; greater than 100 percent.
- 2009: Estimated DTP3 greater than estimated DTP1; DTP1 estimate based on the relationship between DTP1 and DTP3 from 282 surveys.

Dominica - DTP3

DMA - DTP3



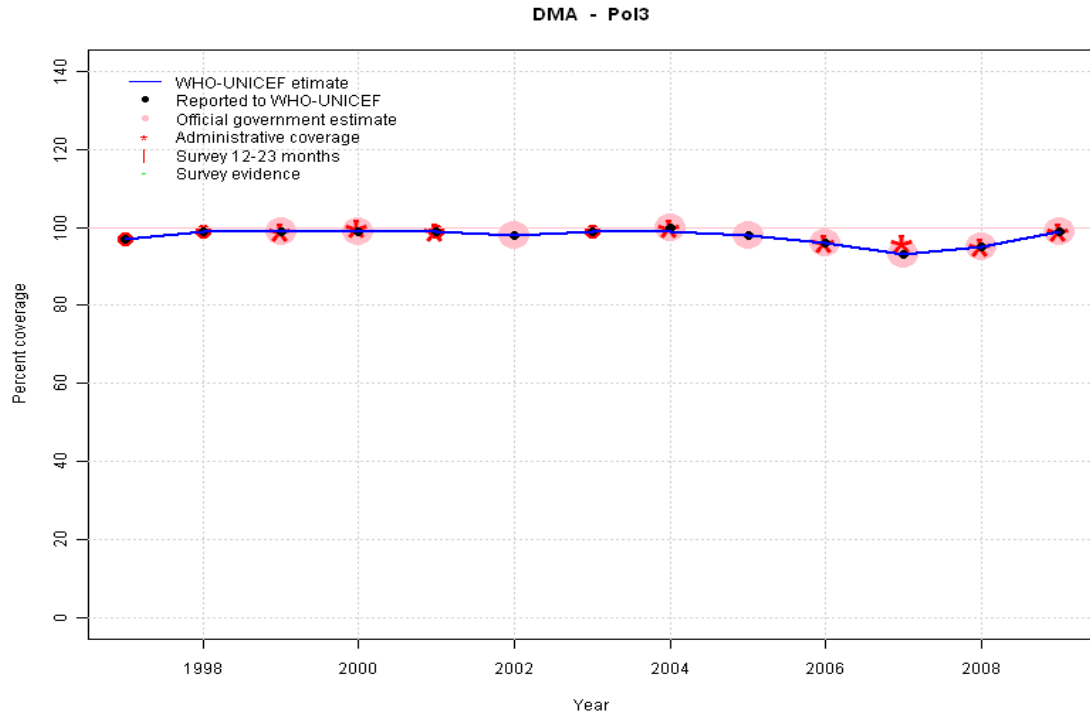
Description:

- 1997: Legacy estimate.
- 1998: Estimate based on reported data.
- 1999: Estimate based on reported data.
- 2000: Estimate based on reported data.
- 2001: Estimate based on reported data.
- 2002: Estimate based on reported data.
- 2003: Estimate based on reported data.
- 2004: Estimate based on reported data.
- 2005: Estimate based on reported data.
- 2006: Estimate based on reported data.
- 2007: Estimate based on reported data.
- 2008: Estimate based on reported data.
- 2009: Estimate based on reported data.

	1997	1998	1999	2000	2001	2002	2003	2004	2005	2006	2007	2008	2009
Estimate	92	99	99	99	99	98	99	99	98	95	96	96	99
Reported	92	99	99	99	99	98	99	100	98	95	96	96	100
Official	NA	NA	99	99	NA	98	NA	100	98	95	96	96	100
Administrative	NA	NA	99	100	99	98	NA	100	NA	95	96	96	100
Survey	NA	NA	NA	NA	NA	NA	NA	NA	NA	NA	NA	NA	NA

Dominica - Pol3

Description:

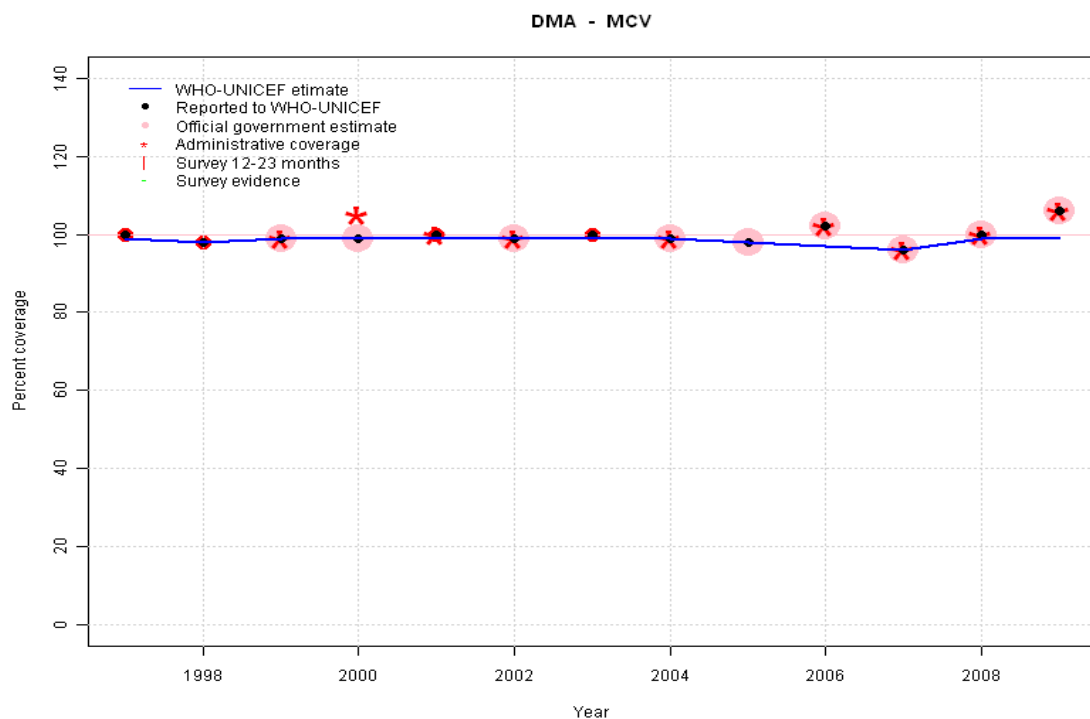


1997: Legacy estimate.
 1998: Estimate based on reported data.
 1999: Estimate based on reported data.
 2000: Estimate based on reported data.
 2001: Estimate based on reported data.
 2002: Estimate based on reported data.
 2003: Estimate based on reported data.
 2004: Estimate based on reported data.
 2005: Estimate based on reported data.
 2006: Estimate based on reported data.
 2007: Estimate based on reported data.
 2008: Estimate based on reported data.
 2009: Estimate based on reported data.

	1997	1998	1999	2000	2001	2002	2003	2004	2005	2006	2007	2008	2009
Estimate	97	99	99	99	99	98	99	99	98	96	93	95	99
Reported	97	99	99	99	99	98	99	100	98	96	93	95	99
Official	NA	NA	99	99	NA	98	NA	100	98	96	93	95	99
Administrative	NA	NA	99	100	99	NA	NA	100	NA	96	96	95	99
Survey	NA	NA	NA	NA	NA	NA	NA	NA	NA	NA	NA	NA	NA

Dominica - MCV

Description:



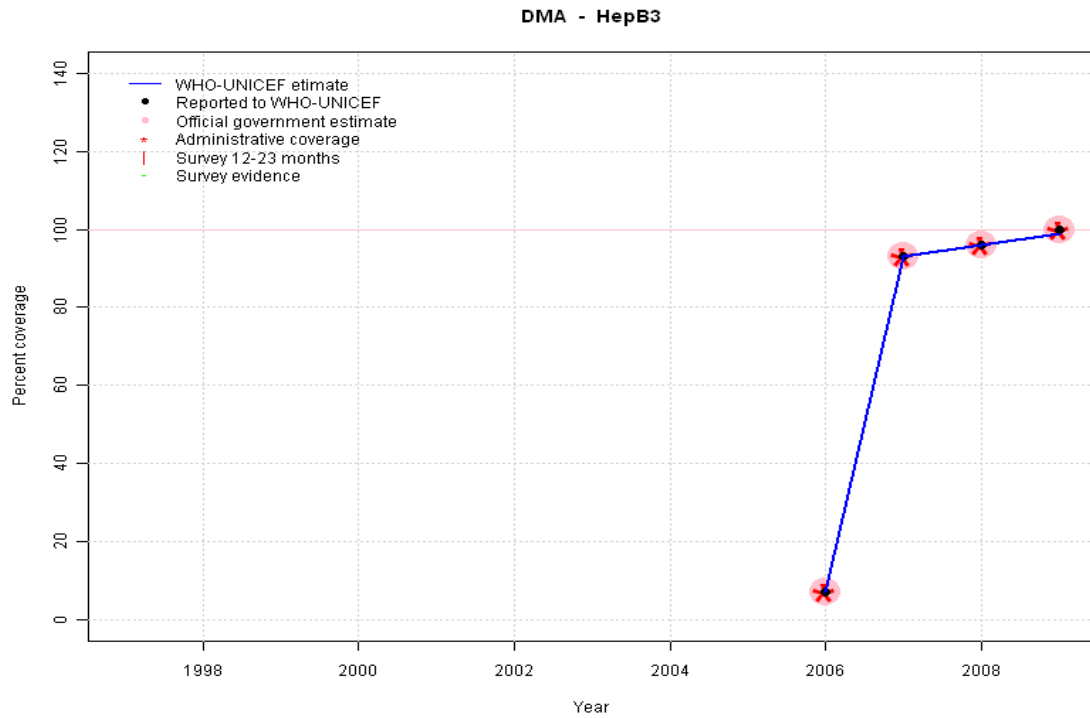
- 1997: Legacy estimate.
- 1998: Estimate based on reported data.
- 1999: Estimate based on reported data.
- 2000: Estimate based on reported data.
- 2001: Estimate based on reported data.
- 2002: Estimate based on reported data.
- 2003: Estimate based on reported data.
- 2004: Estimate based on reported data.
- 2005: Estimate based on reported data.
- 2006: Estimate based on trend in reported data. Missing or ignored reported value estimated by interpolation between reported values of 98 percent in 2005 and 96 percent in 2007. 2006 reported data (102 percent) ignored; greater than 100 percent.
- 2007: Estimate based on reported data.
- 2008: Estimate based on reported data.
- 2009: Estimate based on trend in reported data. Missing or ignored reported value estimated by extrapolation from 2008 reported value of 99 percent. 2009 reported data (106 percent) ignored; greater than 100 percent.

	1997	1998	1999	2000	2001	2002	2003	2004	2005	2006	2007	2008	2009
Estimate	99	98	99	99	99	99	99	99	98	97	96	99	99
Reported	100	98	99	99	100	99	100	99	98	102	96	100	106
Official	NA	NA	99	99	NA	99	NA	99	98	102	96	100	106
Administrative	NA	NA	99	105	100	99	NA	99	NA	102	96	100	106
Survey	NA	NA	NA	NA	NA	NA	NA	NA	NA	NA	NA	NA	NA

Dominica - HepB3

Description:

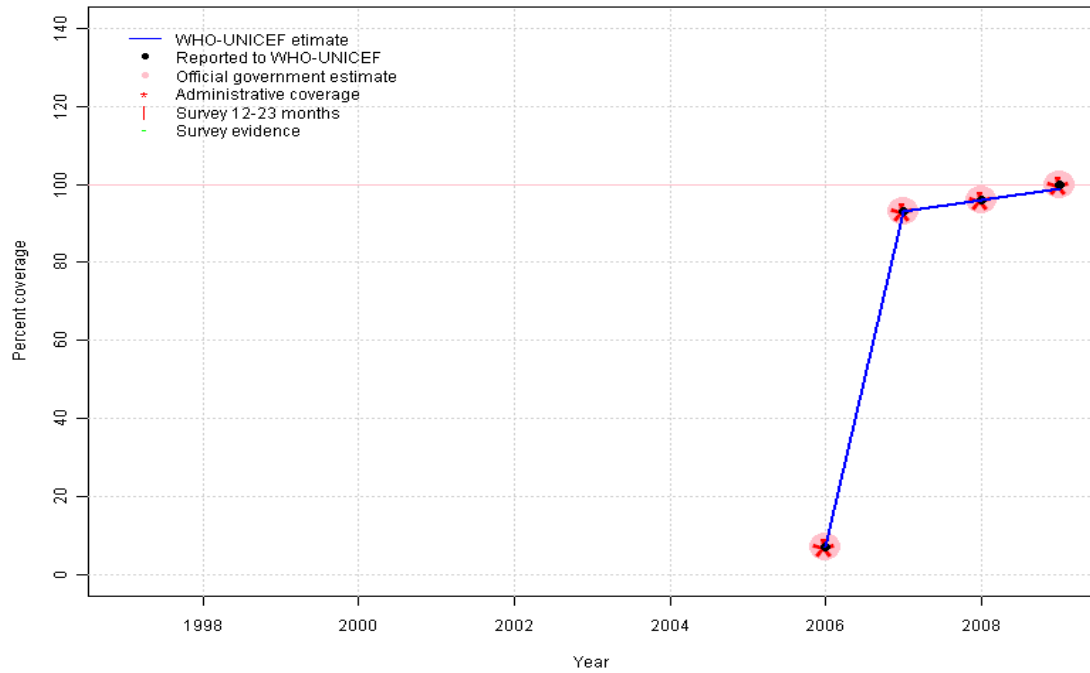
2006: Estimate based on reported data. HepB introduced in 2006
 2007: Estimate based on reported data.
 2008: Estimate based on reported data.
 2009: Estimate based on reported data.



	1997	1998	1999	2000	2001	2002	2003	2004	2005	2006	2007	2008	2009
Estimate	NA	NA	NA	NA	NA	NA	NA	NA	NA	7	93	96	99
Reported	NA	NA	NA	NA	NA	NA	NA	NA	NA	7	93	96	100
Official	NA	NA	NA	NA	NA	NA	NA	NA	NA	7	93	96	100
Administrative	NA	NA	NA	NA	NA	NA	NA	NA	NA	7	93	96	100
Survey	NA	NA	NA	NA	NA	NA	NA	NA	NA	NA	NA	NA	NA

Dominica - Hib3

DMA - Hib3



Description:

2006: Estimate based on reported data. Hib introduced in 2006 Vaccine presentation is DTP-HepB-Hib.

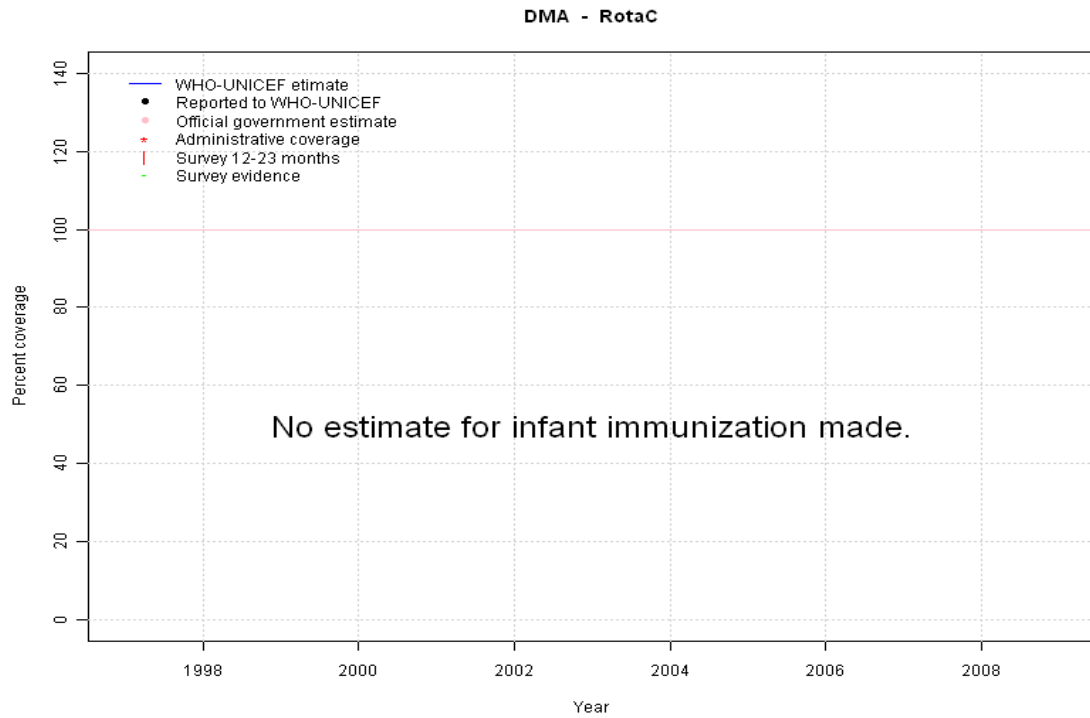
2007: Estimate based on reported data.

2008: Estimate based on reported data.

2009: Estimate based on reported data.

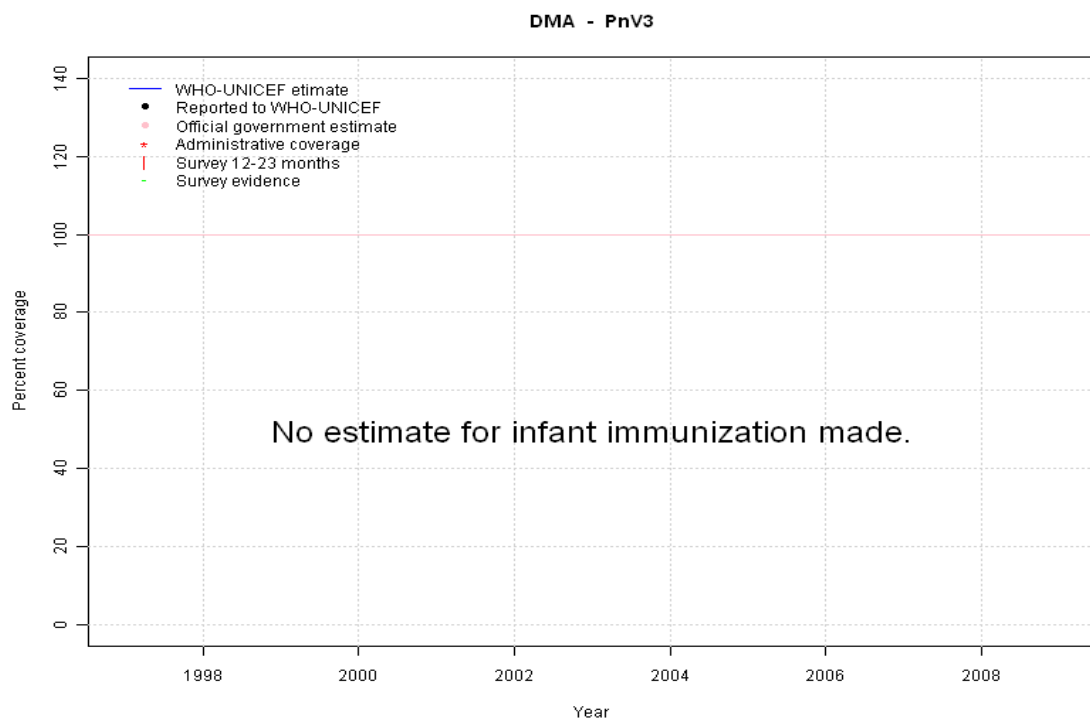
	1997	1998	1999	2000	2001	2002	2003	2004	2005	2006	2007	2008	2009
Estimate	NA	NA	NA	NA	NA	NA	NA	NA	NA	7	93	96	99
Reported	NA	NA	NA	NA	NA	NA	NA	NA	NA	7	93	96	100
Official	NA	NA	NA	NA	NA	NA	NA	NA	NA	7	93	96	100
Administrative	NA	NA	NA	NA	NA	NA	NA	NA	NA	7	93	96	100
Survey	NA	NA	NA	NA	NA	NA	NA	NA	NA	NA	NA	NA	NA

Dominica - RotaC



	1997	1998	1999	2000	2001	2002	2003	2004	2005	2006	2007	2008	2009
Estimate	NA	NA	NA	NA	NA	NA	NA	NA	NA	NA	NA	NA	NA
Reported	NA	NA	NA	NA	NA	NA	NA	NA	NA	NA	NA	NA	NA
Official	NA	NA	NA	NA	NA	NA	NA	NA	NA	NA	NA	NA	NA
Administrative	NA	NA	NA	NA	NA	NA	NA	NA	NA	NA	NA	NA	NA
Survey	NA	NA	NA	NA	NA	NA	NA	NA	NA	NA	NA	NA	NA

Dominica - PnV3



	1997	1998	1999	2000	2001	2002	2003	2004	2005	2006	2007	2008	2009
Estimate	NA	NA	NA	NA	NA	NA	NA	NA	NA	NA	NA	NA	NA
Reported	NA	NA	NA	NA	NA	NA	NA	NA	NA	NA	NA	NA	NA
Official	NA	NA	NA	NA	NA	NA	NA	NA	NA	NA	NA	NA	NA
Administrative	NA	NA	NA	NA	NA	NA	NA	NA	NA	NA	NA	NA	NA
Survey	NA	NA	NA	NA	NA	NA	NA	NA	NA	NA	NA	NA	NA

Further information and estimates for 1980-1996 are available at:

http://www.childinfo.org/immunization_countryreports.html

http://www.who.int/immunization_monitoring/routine/immunization_coverage/en/index4.html