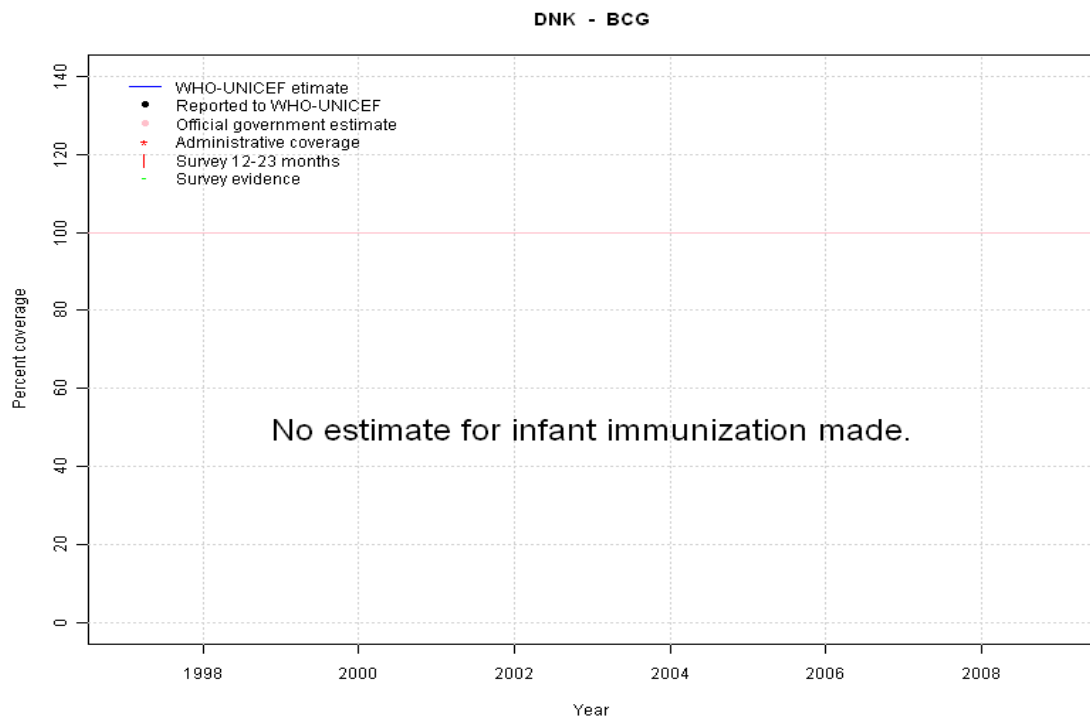


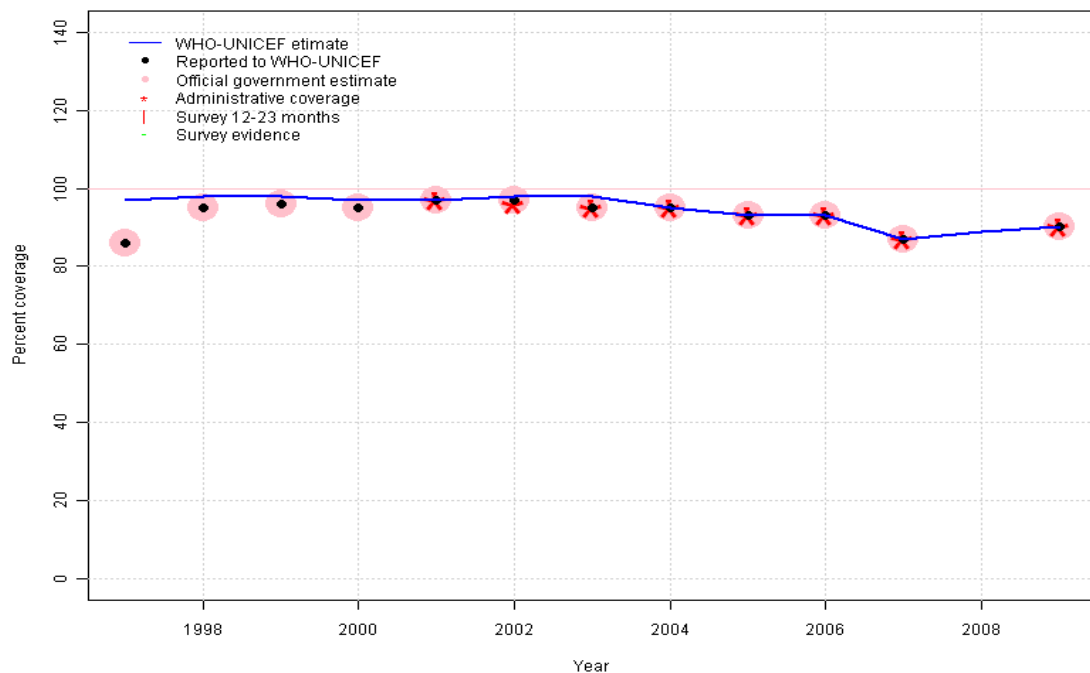
Denmark - BCG



	1997	1998	1999	2000	2001	2002	2003	2004	2005	2006	2007	2008	2009
Estimate	NA	NA	NA	NA	NA	NA	NA	NA	NA	NA	NA	NA	NA
Reported	NA	NA	NA	NA	NA	NA	NA	NA	NA	NA	NA	NA	NA
Official	NA	NA	NA	NA	NA	NA	NA	NA	NA	NA	NA	NA	NA
Administrative	NA	NA	NA	NA	NA	NA	NA	NA	NA	NA	NA	NA	NA
Survey	NA	NA	NA	NA	NA	NA	NA	NA	NA	NA	NA	NA	NA

Denmark - DTP1

DNK - DTP1



	1997	1998	1999	2000	2001	2002	2003	2004	2005	2006	2007	2008	2009
Estimate	97	98	98	97	97	98	98	95	93	93	87	89	90
Reported	86	95	96	95	97	97	95	95	93	93	87	NA	90
Official	86	95	96	95	97	97	95	95	93	93	87	NA	90
Administrative	NA	NA	NA	NA	97	96	95	95	93	93	87	NA	90
Survey	NA	NA	NA	NA	NA	NA	NA	NA	NA	NA	NA	NA	NA

Description:

1997: Legacy estimate.

1998: Estimated DTP3 greater than estimated DTP1; DTP1 estimate based on the relationship between DTP1 and DTP3 from 282 surveys.

1999: Estimated DTP3 greater than estimated DTP1; DTP1 estimate based on the relationship between DTP1 and DTP3 from 282 surveys.

2000: Estimate interpolated between 1997 and 2001 estimates.

2001: Estimate is based on the reported data.

2002: Estimated DTP3 greater than estimated DTP1; DTP1 estimate based on the relationship between DTP1 and DTP3 from 282 surveys.

2003: Estimated DTP3 greater than estimated DTP1; DTP1 estimate based on the relationship between DTP1 and DTP3 from 282 surveys.

2004: Estimate based on reported data.

2005: Estimate based on reported data.

2006: Estimate based on reported data.

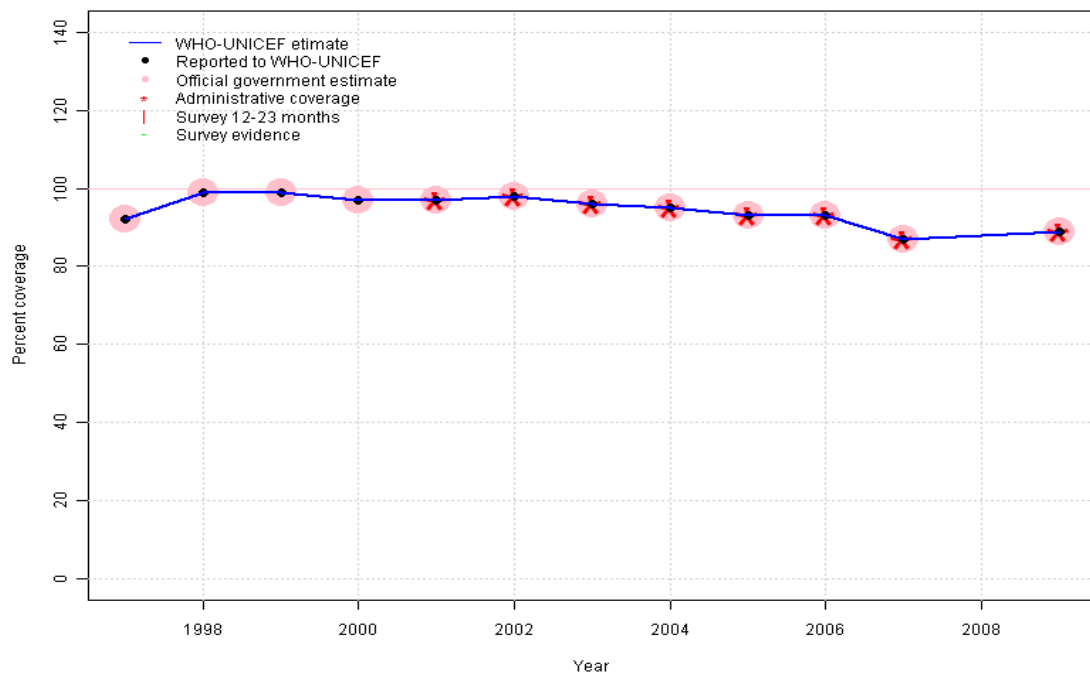
2007: Estimate based on reported data.

2008: Estimate based on trend in reported data. Missing or ignored reported value estimated by interpolation between reported values of 87 percent in 2007 and 90 percent in 2009.

2009: Estimate based on reported data.

Denmark - DTP3

DNK - DTP3



Description:

1997: Legacy estimate.

1998: Estimate based on reported data.

1999: Estimate based on reported data.

2000: Estimate based on reported data.

2001: Estimate based on reported data.

2002: Estimate based on reported data.

2003: Estimate based on reported data.

2004: Estimate based on reported data.

2005: Estimate based on reported data.

2006: Estimate based on reported data.

2007: Estimate based on reported data.

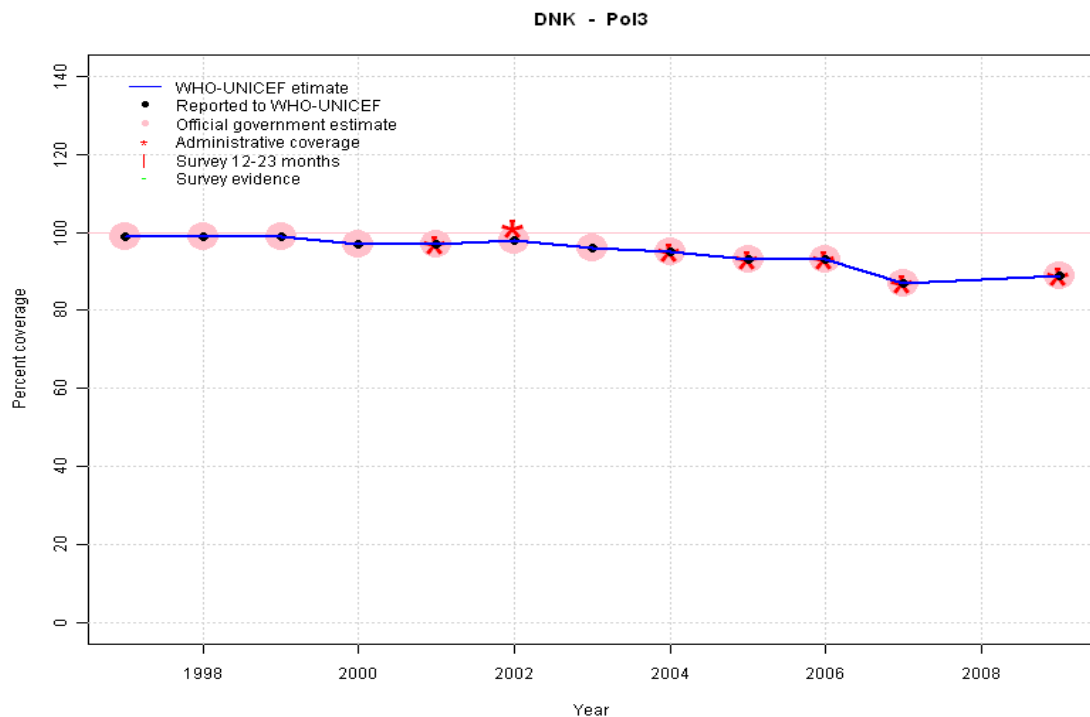
2008: Estimate based on trend in reported data. Missing or ignored reported value estimated by interpolation between reported values of 87 percent in 2007 and 89 percent in 2009.

2009: Estimate based on reported data.

	1997	1998	1999	2000	2001	2002	2003	2004	2005	2006	2007	2008	2009
Estimate	92	99	99	97	97	98	96	95	93	93	87	88	89
Reported	92	99	99	97	97	98	96	95	93	93	87	NA	89
Official	92	99	99	97	97	98	96	95	93	93	87	NA	89
Administrative	NA	NA	NA	NA	97	98	96	95	93	93	87	NA	89
Survey	NA	NA	NA	NA	NA	NA	NA	NA	NA	NA	NA	NA	NA

Denmark - Pol3

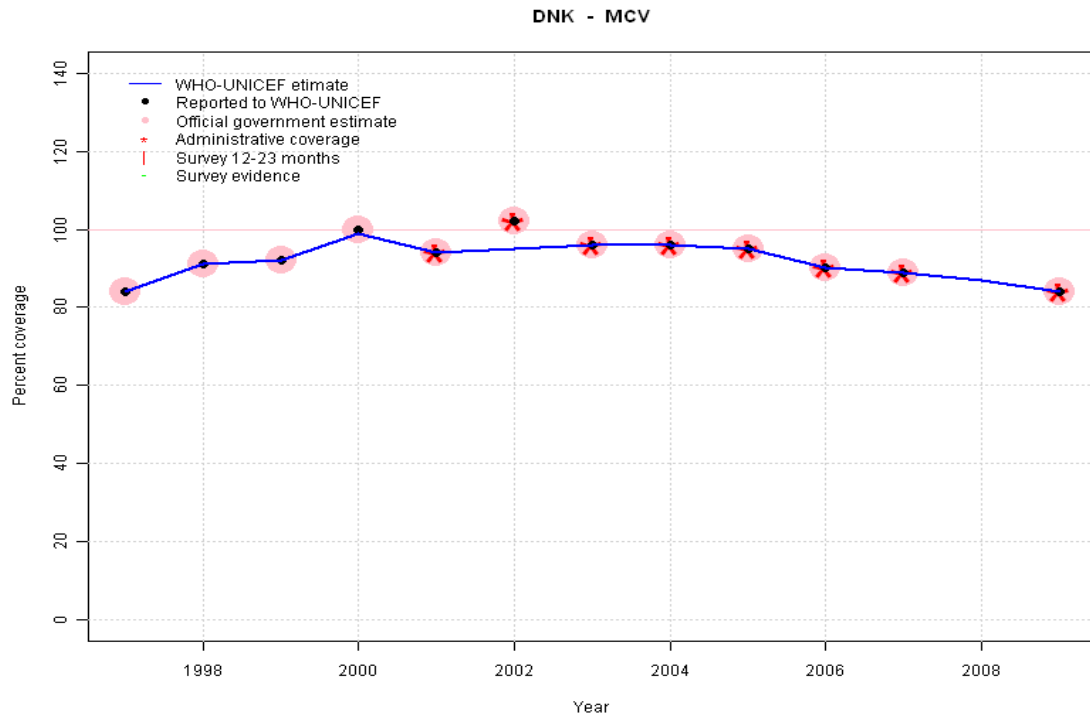
Description:



1997: Legacy estimate.
 1998: Estimate based on reported data.
 1999: Estimate based on reported data.
 2000: Estimate based on reported data.
 2001: Estimate based on reported data.
 2002: Estimate based on reported data.
 2003: Estimate based on reported data.
 2004: Estimate based on reported data.
 2005: Estimate based on reported data.
 2006: Estimate based on reported data.
 2007: Estimate based on reported data.
 2008: Estimate based on trend in reported data. Missing or ignored reported value estimated by interpolation between reported values of 87 percent in 2007 and 89 percent in 2009.
 2009: Estimate based on reported data.

	1997	1998	1999	2000	2001	2002	2003	2004	2005	2006	2007	2008	2009
Estimate	99	99	99	97	97	98	96	95	93	93	87	88	89
Reported	99	99	99	97	97	98	96	95	93	93	87	NA	89
Official	99	99	99	97	97	98	96	95	93	93	87	NA	89
Administrative	NA	NA	NA	NA	97	101	NA	95	93	93	87	NA	89
Survey	NA	NA	NA	NA	NA	NA	NA	NA	NA	NA	NA	NA	NA

Denmark - MCV



Description:

1997: Legacy estimate.

1998: Estimate based on reported data.

1999: Estimate based on reported data.

2000: Estimate based on reported data.

2001: Estimate based on reported data.

2002: Estimate based on trend in reported data. Missing or ignored reported value estimated by interpolation between reported values of 94 percent in 2001 and 96 percent in 2003. 2002 reported data (102 percent) ignored; greater than 100 percent.

2003: Estimate based on reported data.

2004: Estimate based on reported data.

2005: Estimate based on reported data.

2006: Estimate based on reported data.

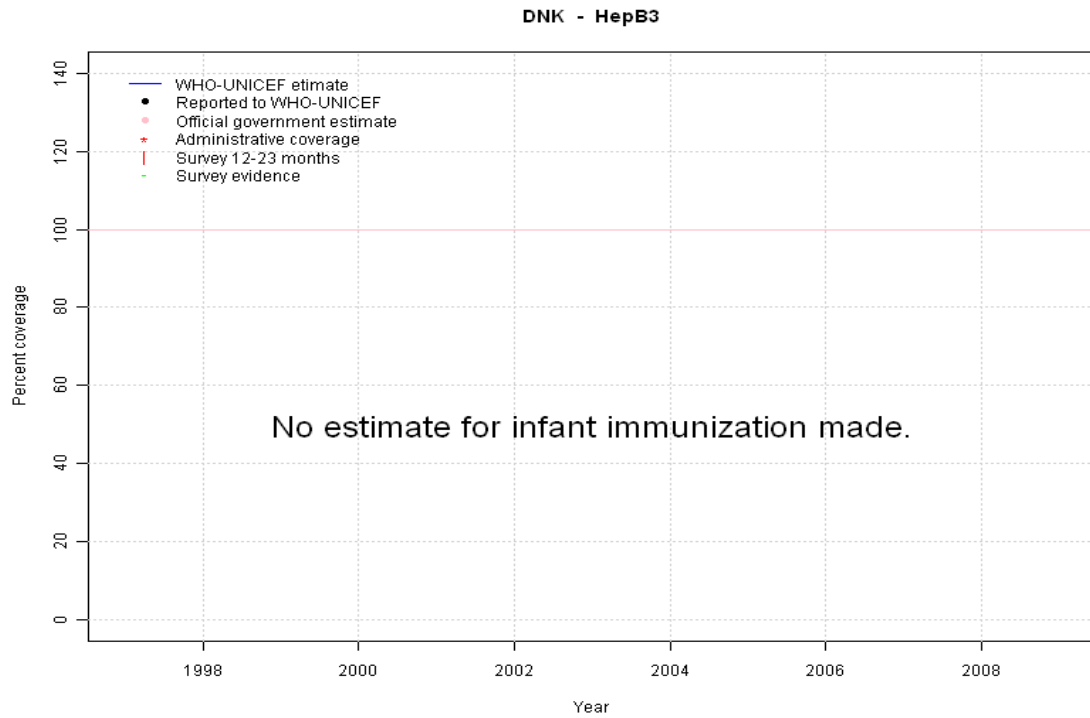
2007: Estimate based on reported data.

2008: Estimate based on trend in reported data. Missing or ignored reported value estimated by interpolation between reported values of 89 percent in 2007 and 84 percent in 2009.

2009: Estimate based on reported data.

	1997	1998	1999	2000	2001	2002	2003	2004	2005	2006	2007	2008	2009
Estimate	84	91	92	99	94	95	96	96	95	90	89	87	84
Reported	84	91	92	100	94	102	96	96	95	90	89	NA	84
Official	84	91	92	100	94	102	96	96	95	90	89	NA	84
Administrative	NA	NA	NA	NA	94	102	96	96	95	90	89	NA	84
Survey	NA	NA	NA	NA	NA	NA	NA	NA	NA	NA	NA	NA	NA

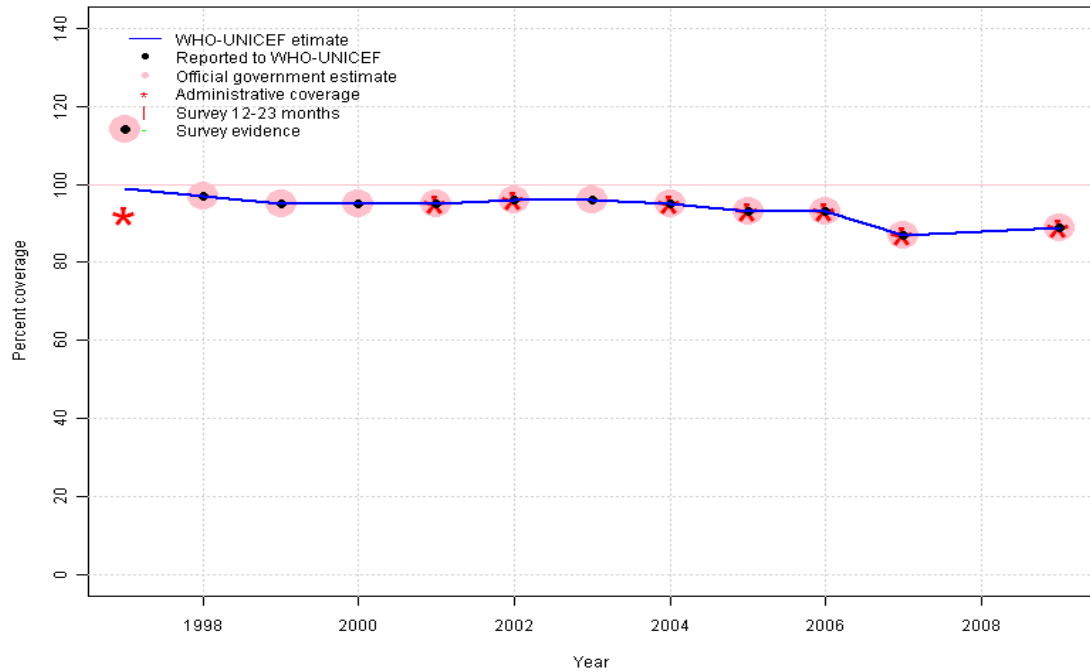
Denmark - HepB3



	1997	1998	1999	2000	2001	2002	2003	2004	2005	2006	2007	2008	2009
Estimate	NA	NA	NA	NA	NA	NA	NA	NA	NA	NA	NA	NA	NA
Reported	NA	NA	NA	NA	NA	NA	NA	NA	NA	NA	NA	NA	NA
Official	NA	NA	NA	NA	NA	NA	NA	NA	NA	NA	NA	NA	NA
Administrative	NA	NA	NA	NA	NA	NA	NA	NA	NA	NA	NA	NA	NA
Survey	NA	NA	NA	NA	NA	NA	NA	NA	NA	NA	NA	NA	NA

Denmark - Hib3

DNK - Hib3



Description:

1997: Legacy estimate. 1997 reported data (114 percent) ignored; greater than 100 percent.

1998: Estimate is based on the reported data.

1999: Estimate based on reported data.

2000: Estimate based on reported data.

2001: Estimate based on reported data.

2002: Estimate based on reported data.

2003: Estimate based on reported data.

2004: Estimate based on reported data.

2005: Estimate based on reported data.

2006: Estimate based on reported data.

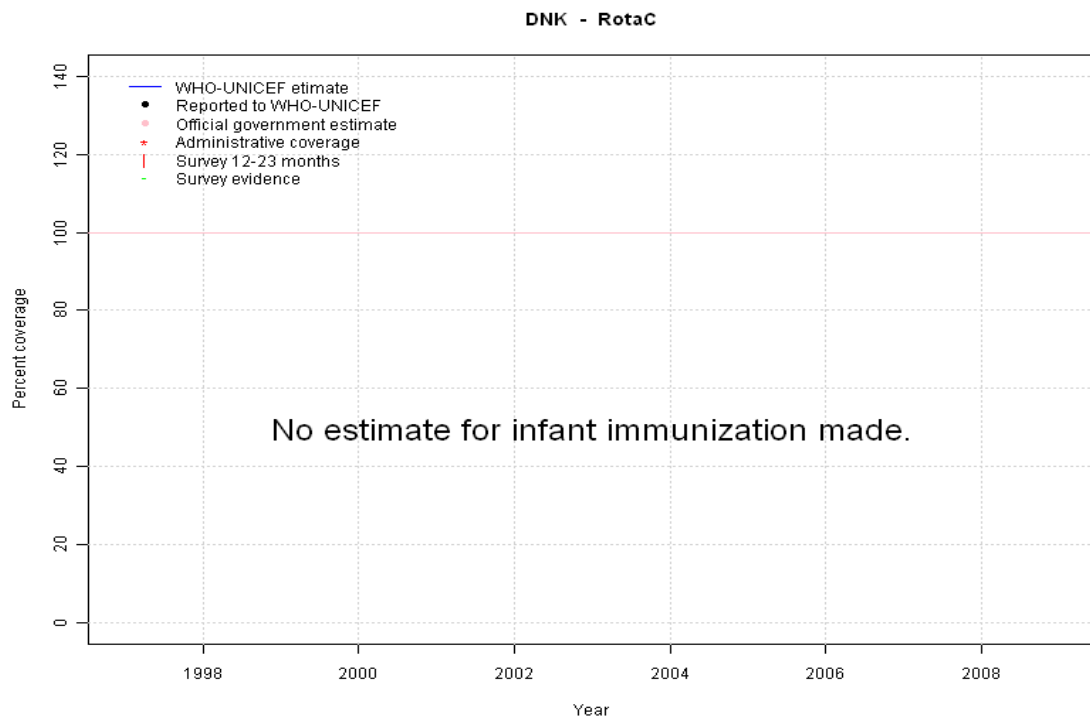
2007: Estimate based on reported data.

2008: Estimate based on trend in reported data. Missing or ignored reported value estimated by interpolation between reported values of 87 percent in 2007 and 89 percent in 2009.

2009: Estimate based on reported data.

	1997	1998	1999	2000	2001	2002	2003	2004	2005	2006	2007	2008	2009
Estimate	99	97	95	95	95	96	96	95	93	93	87	88	89
Reported	114	97	95	95	95	96	96	95	93	93	87	NA	89
Official	114	97	95	95	95	96	96	95	93	93	87	NA	89
Administrative	92	NA	NA	NA	95	96	NA	95	93	93	87	NA	89
Survey	NA	NA	NA	NA	NA	NA	NA	NA	NA	NA	NA	NA	NA

Denmark - RotaC

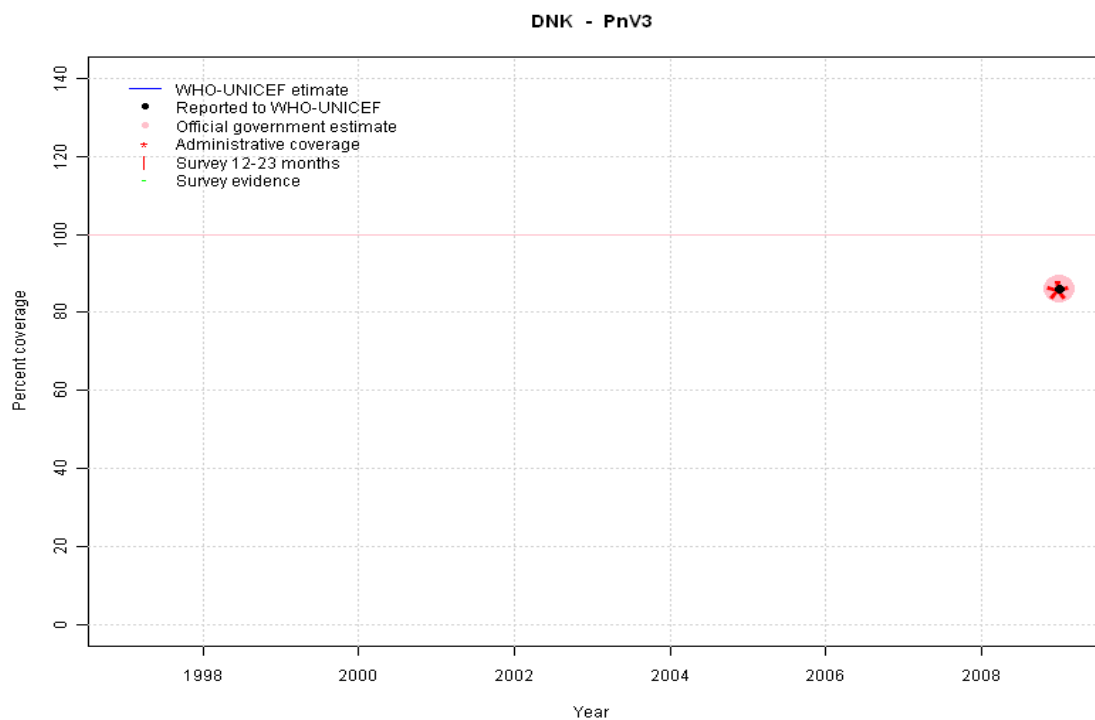


	1997	1998	1999	2000	2001	2002	2003	2004	2005	2006	2007	2008	2009
Estimate	NA	NA	NA	NA	NA	NA	NA	NA	NA	NA	NA	NA	NA
Reported	NA	NA	NA	NA	NA	NA	NA	NA	NA	NA	NA	NA	NA
Official	NA	NA	NA	NA	NA	NA	NA	NA	NA	NA	NA	NA	NA
Administrative	NA	NA	NA	NA	NA	NA	NA	NA	NA	NA	NA	NA	NA
Survey	NA	NA	NA	NA	NA	NA	NA	NA	NA	NA	NA	NA	NA

Denmark - PnV3

Description:

2009: Estimate based on reported data. PCV introduced in 2007 reporting started in 2009



	1997	1998	1999	2000	2001	2002	2003	2004	2005	2006	2007	2008	2009
Estimate	NA	NA	NA	NA	NA	NA	NA	NA	NA	NA	NA	NA	86
Reported	NA	NA	NA	NA	NA	NA	NA	NA	NA	NA	NA	NA	86
Official	NA	NA	NA	NA	NA	NA	NA	NA	NA	NA	NA	NA	86
Administrative	NA	NA	NA	NA	NA	NA	NA	NA	NA	NA	NA	NA	86
Survey	NA	NA	NA	NA	NA	NA	NA	NA	NA	NA	NA	NA	NA

Further information and estimates for 1980-1996 are available at:

http://www.childinfo.org/immunization_countryreports.html

http://www.who.int/immunization_monitoring/routine/immunization_coverage/en/index4.html