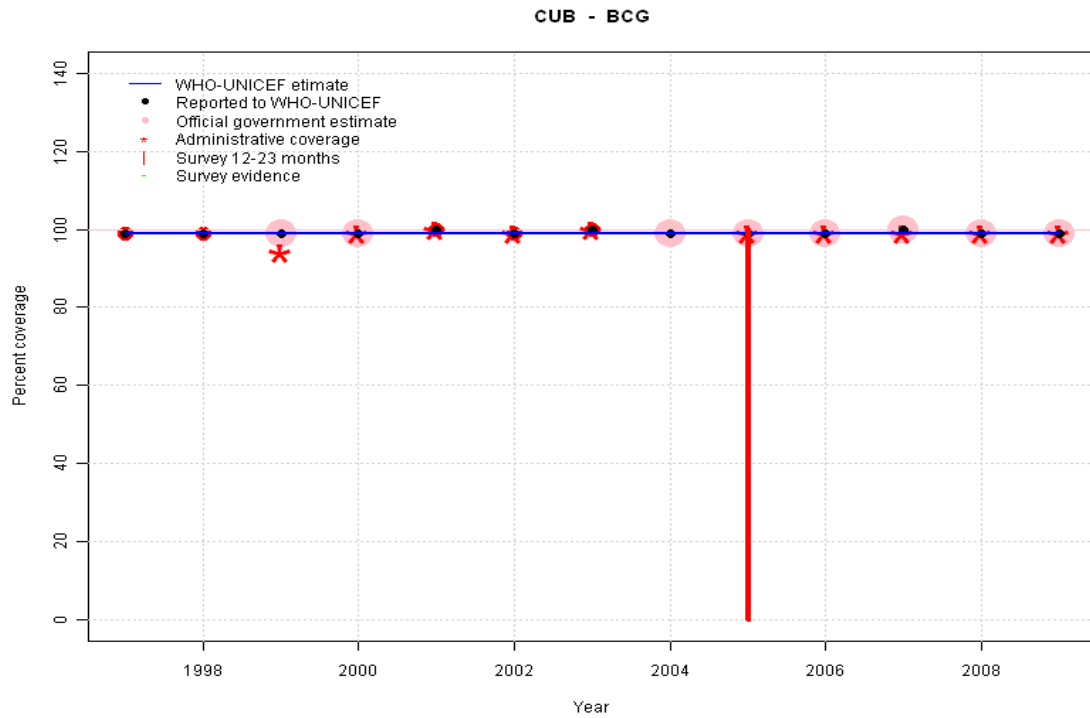


Cuba - BCG

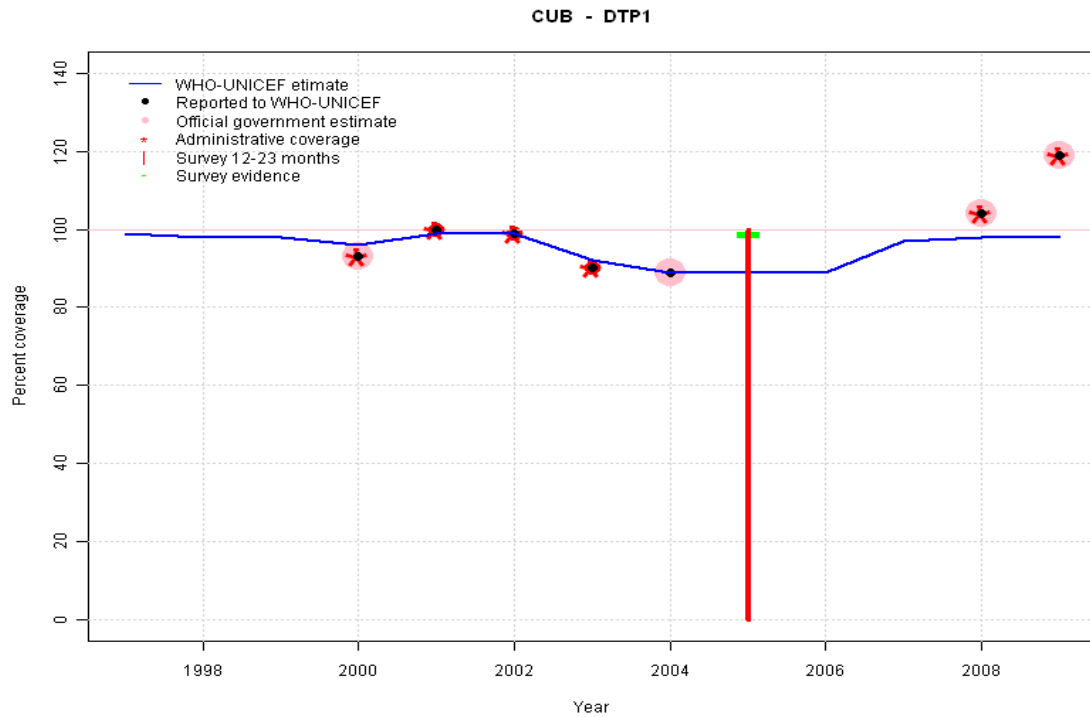
Description:



1997: Legacy estimate.
 1998: Estimate based on reported data.
 1999: Estimate based on reported data.
 2000: Estimate based on reported data.
 2001: Estimate based on reported data.
 2002: Estimate based on reported data.
 2003: Estimate based on reported data.
 2004: Estimate based on reported data.
 2005: Estimate based on reported data (99 percent) confirmed by survey (99 percent).
 2006: Estimate based on reported data.
 2007: Estimate based on reported data.
 2008: Estimate based on reported data.
 2009: Estimate based on reported data.

	1997	1998	1999	2000	2001	2002	2003	2004	2005	2006	2007	2008	2009
Estimate	99	99	99	99	99	99	99	99	99	99	99	99	99
Reported	99	99	99	99	100	99	100	99	99	99	100	99	99
Official	NA	NA	99	99	NA	NA	NA	99	99	99	100	99	99
Administrative	NA	NA	94	99	100	99	100	NA	99	99	99	99	99
Survey	NA	NA	NA	NA	NA	NA	NA	NA	99	NA	NA	NA	NA

Cuba - DTP1



Description:

1997: Legacy estimate.

1998: Estimated DTP3 greater than estimated DTP1; DTP1 estimate based on the relationship between DTP1 and DTP3 from 282 surveys.

1999: Reported data (93 percent) calibrated to 1997 and 2005 levels. Missing or ignored reported value estimated by extrapolation from 2000 reported value of 93 percent.

2000: Reported data (93 percent) calibrated to 1997 and 2005 levels.

2001: Reported data (99 percent) calibrated to 1997 and 2005 levels.

2002: Reported data (99 percent) calibrated to 1997 and 2005 levels.

2003: Reported data (90 percent) calibrated to 1997 and 2005 levels.

2004: Reported data (89 percent) calibrated to 1997 and 2005 levels.

2005: Estimate based on interpolated value between reported data. Survey (99 percent) confirms trend in reported data.

2006: Estimate based on trend in reported data. Missing or ignored reported value estimated by extrapolation from 2004 reported value of 89 percent.

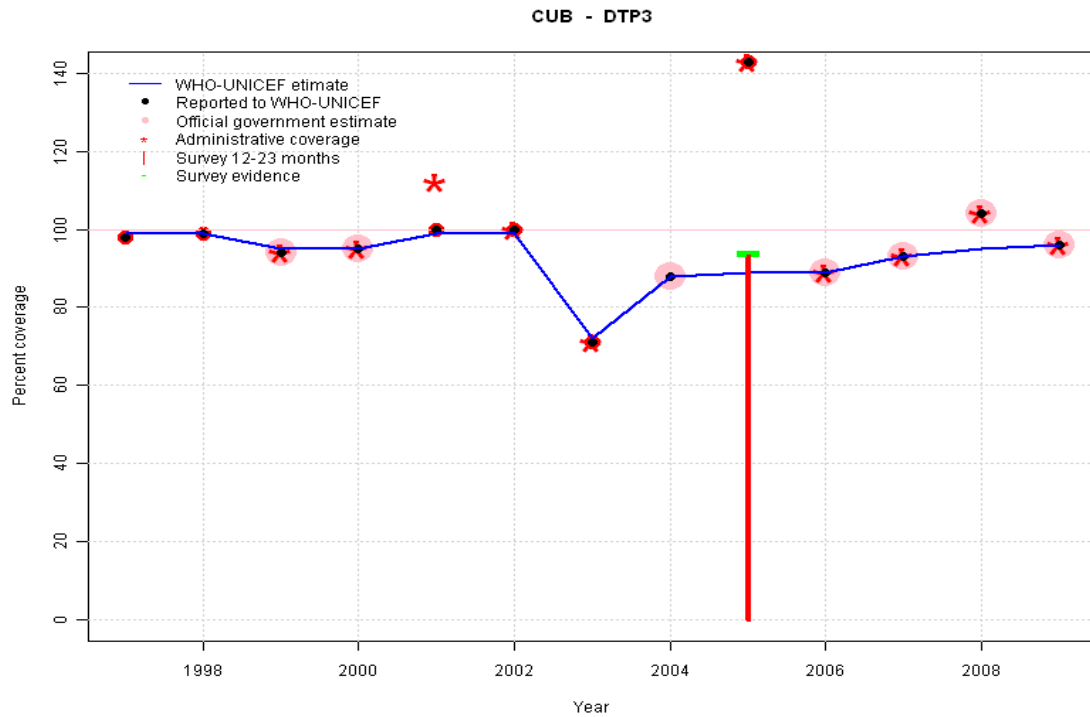
2007: Estimated DTP3 greater than estimated DTP1; DTP1 estimate based on the relationship between DTP1 and DTP3 from 282 surveys.

2008: Estimated DTP3 greater than estimated DTP1; DTP1 estimate based on the relationship between DTP1 and DTP3 from 282 surveys.

2009: Estimated DTP3 greater than estimated DTP1; DTP1 estimate based on the relationship between DTP1 and DTP3 from 282 surveys.

	1997	1998	1999	2000	2001	2002	2003	2004	2005	2006	2007	2008	2009
Estimate	99	98	98	96	99	99	92	89	89	89	97	98	98
Reported	NA	NA	NA	93	100	99	90	89	NA	NA	NA	104	119
Official	NA	NA	NA	93	NA	NA	NA	89	NA	NA	NA	104	119
Administrative	NA	NA	NA	93	100	99	90	NA	NA	NA	NA	104	119
Survey	NA	NA	NA	NA	NA	NA	NA	NA	99	NA	NA	NA	NA

Cuba - DTP3



	1997	1998	1999	2000	2001	2002	2003	2004	2005	2006	2007	2008	2009
Estimate	99	99	95	95	99	99	72	88	89	89	93	95	96
Reported	98	99	94	95	100	100	71	88	143	89	93	104	96
Official	NA	NA	94	95	NA	NA	NA	88	NA	89	93	104	96
Administrative	NA	NA	94	95	112	100	71	NA	143	89	93	104	96
Survey	NA	NA	NA	NA	NA	NA	NA	NA	94	NA	NA	NA	NA

Description:

1997: Legacy estimate.

1998: Reported data (99 percent) calibrated to 1997 and 2005 levels.

1999: Reported data (94 percent) calibrated to 1997 and 2005 levels.

2000: Reported data (95 percent) calibrated to 1997 and 2005 levels.

2001: Reported data (99 percent) calibrated to 1997 and 2005 levels.

2002: Reported data (99 percent) calibrated to 1997 and 2005 levels.

2003: Reported data (71 percent) calibrated to 1997 and 2005 levels. Decline attributed to interruption of vaccine supply. Catch-up campaign conducted in 2005.

2004: Reported data (88 percent) calibrated to 1997 and 2005 levels.

2005: Estimate based on interpolated value between reported data. Survey (94 percent) confirms trend in reported data. Survey results (93 percent) adjusted for recall bias to 94 percent based on first dose card or history coverage (100 percent) and documented drop-out between first (97 percent) and third (91 percent) doses. 2005 reported data (143 percent) ignored; greater than 100 percent. 2005 reported data (143 percent) inconsistent with data from other years.

2006: Estimate based on reported data.

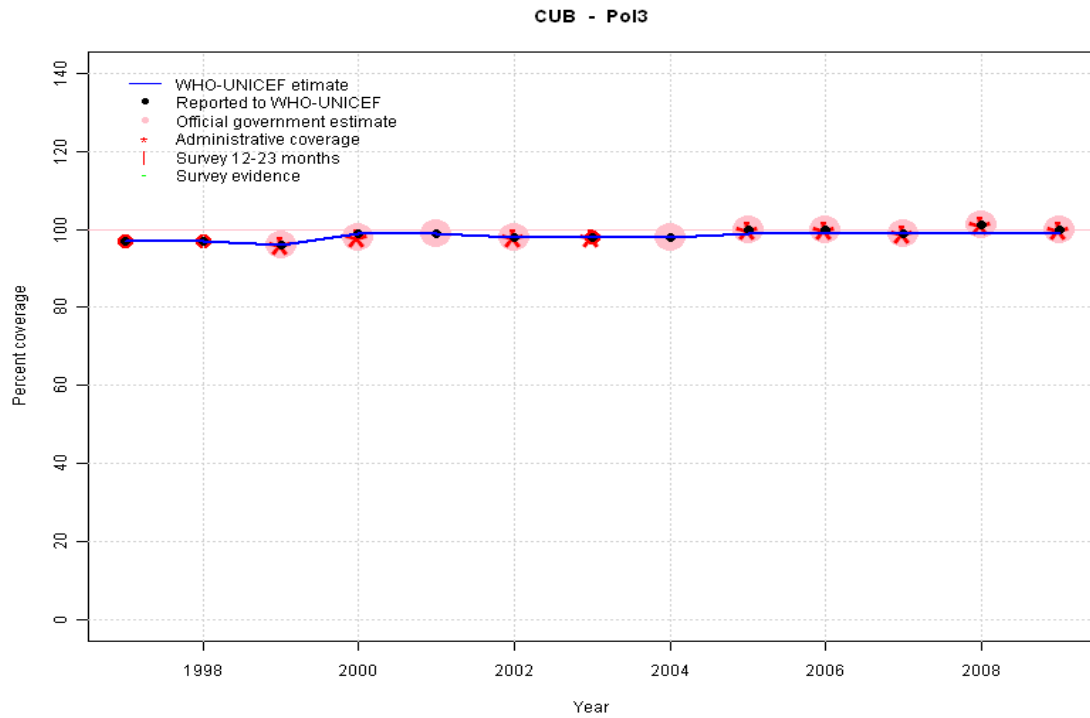
2007: Estimate based on reported data.

2008: Estimate based on trend in reported data. Missing or ignored reported value estimated by interpolation between reported values of 93 percent in 2007 and 96 percent in 2009. 2008 reported data (104 percent) ignored; greater than 100 percent.

2009: Estimate based on reported data.

Cuba - Pol3

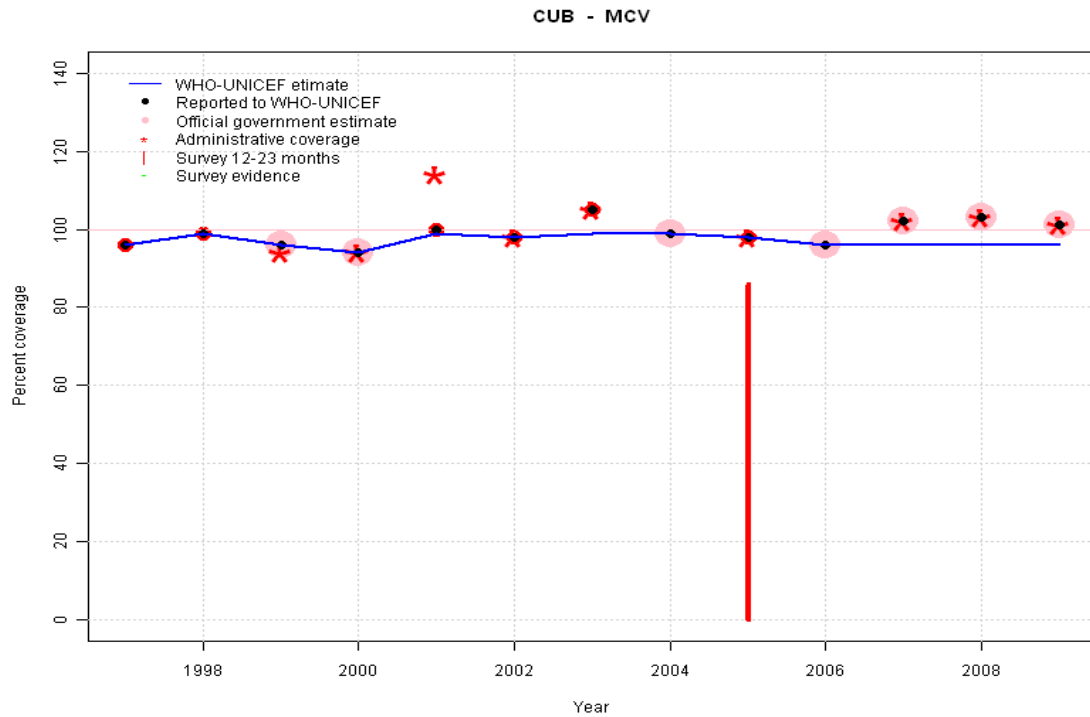
Description:



- 1997: Legacy estimate.
- 1998: Estimate based on reported data.
- 1999: Estimate based on reported data.
- 2000: Estimate based on reported data.
- 2001: Estimate based on reported data.
- 2002: Estimate based on reported data.
- 2003: Estimate based on reported data.
- 2004: Estimate based on reported data.
- 2005: Estimate based on reported data.
- 2006: Estimate based on reported data.
- 2007: Estimate based on reported data.
- 2008: Estimate based on trend in reported data. Missing or ignored reported value estimated by interpolation between reported values of 99 percent in 2007 and 100 percent in 2009. 2008 reported data (101 percent) ignored; greater than 100 percent.
- 2009: Estimate based on reported data.

	1997	1998	1999	2000	2001	2002	2003	2004	2005	2006	2007	2008	2009
Estimate	97	97	96	99	99	98	98	98	99	99	99	99	99
Reported	97	97	96	99	99	98	98	98	100	100	99	101	100
Official	NA	NA	96	98	99	98	NA	98	100	100	99	101	100
Administrative	NA	NA	96	98	NA	98	98	NA	100	100	99	101	100
Survey	NA	NA	NA	NA	NA	NA	NA	NA	NA	NA	NA	NA	NA

Cuba - MCV



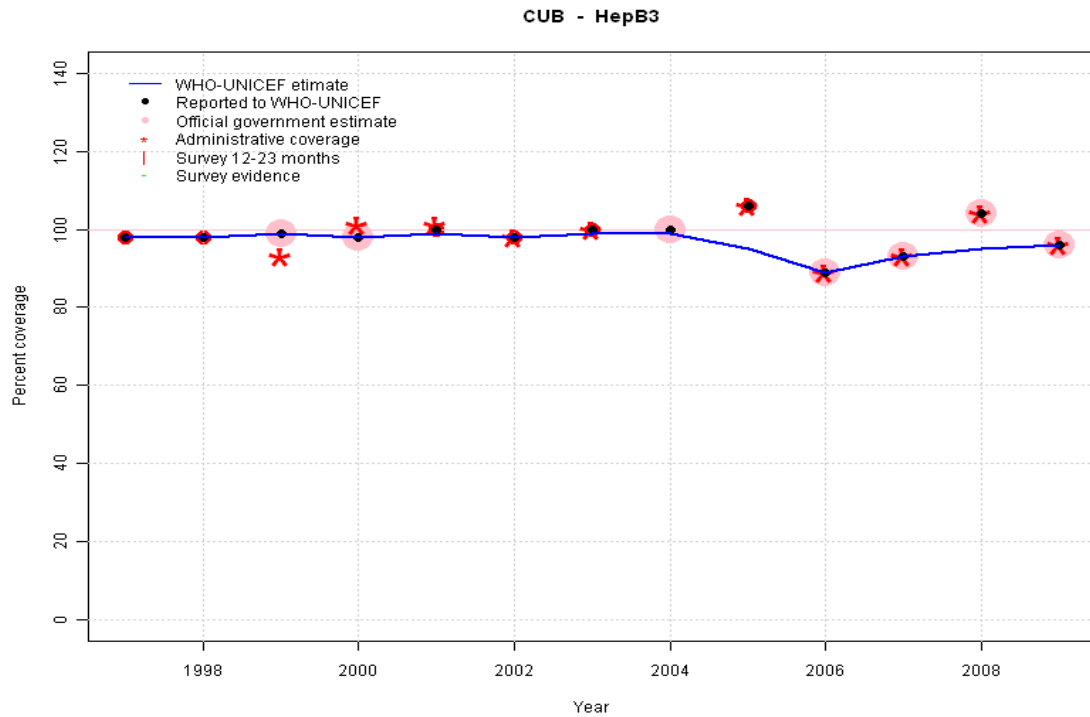
	1997	1998	1999	2000	2001	2002	2003	2004	2005	2006	2007	2008	2009
Estimate	96	99	96	94	99	98	99	99	98	96	96	96	96
Reported	96	99	96	94	100	98	105	99	98	96	102	103	101
Official	NA	NA	96	94	NA	NA	NA	99	NA	96	102	103	101
Administrative	NA	NA	94	94	114	98	105	NA	98	NA	102	103	101
Survey	NA	NA	NA	NA	NA	NA	NA	NA	NA	NA	NA	NA	NA

Description:

- 1997: Legacy estimate.
- 1998: Estimate based on reported data.
- 1999: Estimate based on reported data.
- 2000: Estimate based on reported data.
- 2001: Estimate based on reported data.
- 2002: Estimate based on reported data.
- 2003: Estimate based on trend in reported data. Missing or ignored reported value estimated by interpolation between reported values of 98 percent in 2002 and 99 percent in 2004. 2003 reported data (105 percent) ignored; greater than 100 percent.
- 2004: Estimate based on reported data.
- 2005: Estimate based on reported data. Survey results of 86 percent ignored by working group. Measles vaccination is recommended between 12 and 23 months of age. Survey cohort under-estimates coverage.
- 2006: Estimate based on reported data.
- 2007: Estimate based on trend in reported data. Missing or ignored reported value estimated by extrapolation from 2006 reported value of 96 percent. 2007 reported data (102 percent) ignored; greater than 100 percent.
- 2008: Estimate based on trend in reported data. Missing or ignored reported value estimated by extrapolation from 2006 reported value of 96 percent. 2008 reported data (103 percent) ignored; greater than 100 percent.
- 2009: Estimate based on trend in reported data. Missing or ignored reported value estimated by extrapolation from 2006 reported value of 96 percent. 2009 reported data (101 percent) ignored; greater than 100 percent.

Cuba - HepB3

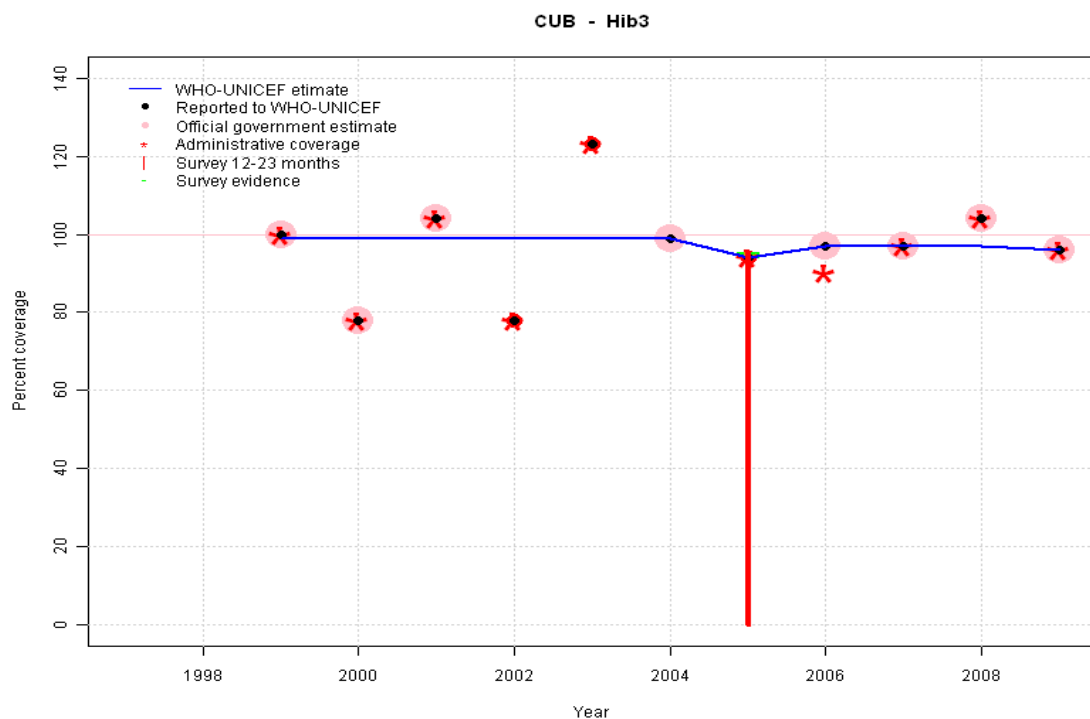
Description:



- 1997: Legacy estimate.
- 1998: Estimate based on reported data.
- 1999: Estimate based on reported data.
- 2000: Estimate based on reported data.
- 2001: Estimate based on reported data.
- 2002: Estimate based on reported data.
- 2003: Estimate based on reported data.
- 2004: Estimate based on reported data.
- 2005: Estimate based on trend in reported data. Missing or ignored reported value estimated by interpolation between reported values of 100 percent in 2004 and 89 percent in 2006. 2005 reported data (106 percent) ignored; greater than 100 percent.
- 2006: Estimate based on reported data.
- 2007: Estimate based on reported data.
- 2008: Estimate based on trend in reported data. Missing or ignored reported value estimated by interpolation between reported values of 93 percent in 2007 and 96 percent in 2009. 2008 reported data (104 percent) ignored; greater than 100 percent.
- 2009: Estimate based on reported data.

	1997	1998	1999	2000	2001	2002	2003	2004	2005	2006	2007	2008	2009
Estimate	98	98	99	98	99	98	99	99	95	89	93	95	96
Reported	98	98	99	98	100	98	100	100	106	89	93	104	96
Official	NA	NA	99	98	NA	NA	NA	100	NA	89	93	104	96
Administrative	NA	NA	93	101	101	98	100	NA	106	89	93	104	96
Survey	NA	NA	NA	NA	NA	NA	NA	NA	NA	NA	NA	NA	NA

Cuba - Hib3

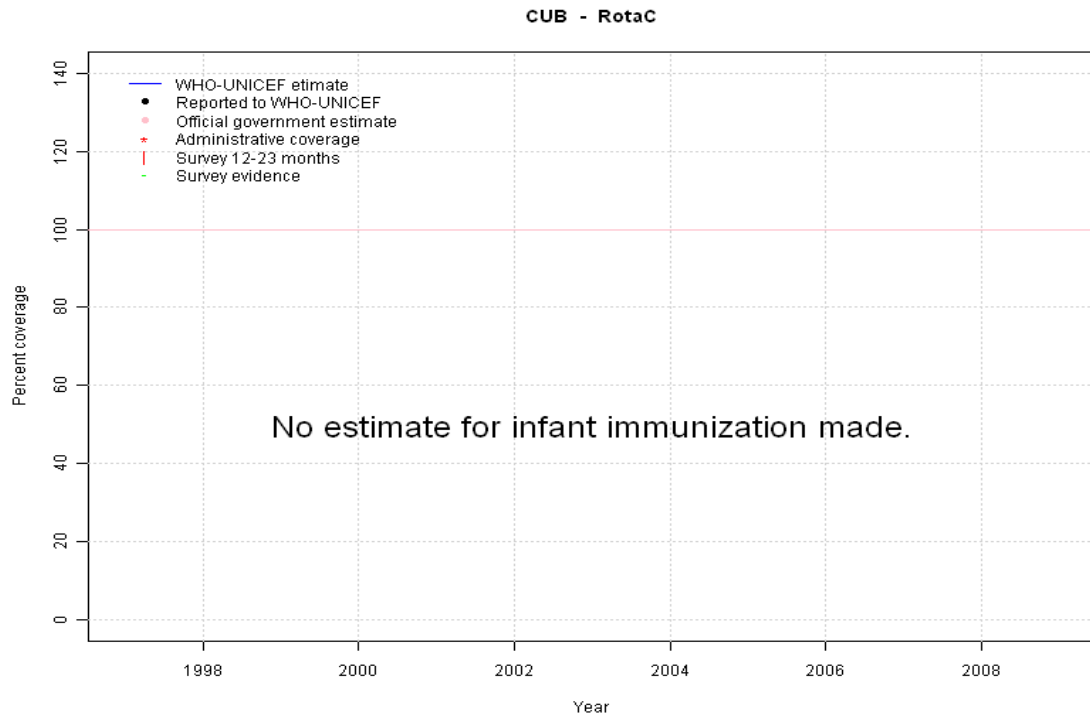


	1997	1998	1999	2000	2001	2002	2003	2004	2005	2006	2007	2008	2009
Estimate	NA	NA	99	99	99	99	99	99	94	97	97	97	96
Reported	NA	NA	100	78	104	78	123	99	94	97	97	104	96
Official	NA	NA	100	78	104	NA	NA	99	NA	97	97	104	96
Administrative	NA	NA	100	78	104	78	123	NA	94	90	97	104	96
Survey	NA	NA	NA	NA	NA	NA	NA	NA	95	NA	NA	NA	NA

Description:

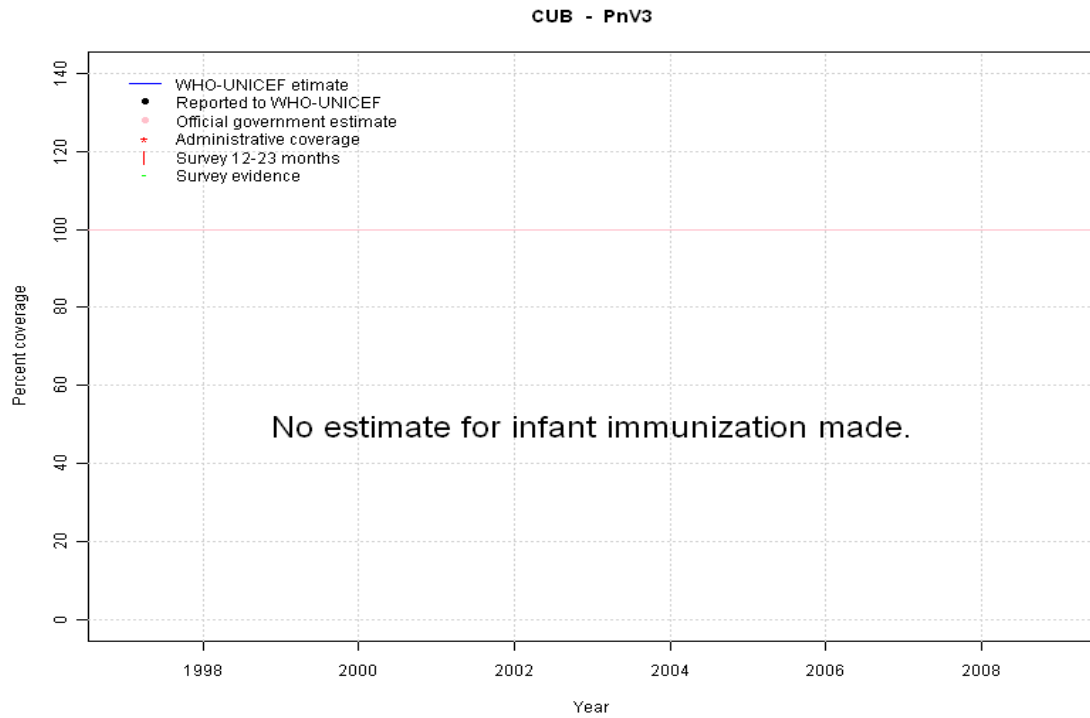
- 1999: Estimate based on trend in reported data. Hib introduced in 1999
- 2000: Estimate based on trend in reported data. Missing or ignored reported value estimated by interpolation between reported values of 100 percent in 1999 and 99 percent in 2004. 2000 reported data (78 percent) inconsistent with data from other years.
- 2001: Estimate based on trend in reported data. Missing or ignored reported value estimated by interpolation between reported values of 100 percent in 1999 and 99 percent in 2004. 2001 reported data (104 percent) ignored; greater than 100 percent. 2001 reported data (104 percent) inconsistent with data from other years.
- 2002: Estimate based on trend in reported data. Missing or ignored reported value estimated by interpolation between reported values of 100 percent in 1999 and 99 percent in 2004. 2002 reported data (78 percent) inconsistent with data from other years.
- 2003: Estimate based on trend in reported data. Missing or ignored reported value estimated by interpolation between reported values of 100 percent in 1999 and 99 percent in 2004. 2003 reported data (123 percent) ignored; greater than 100 percent. 2003 reported data (123 percent) inconsistent with data from other years.
- 2004: Estimate based on trend in reported data.
- 2005: Estimate based on reported data (94 percent) confirmed by survey (95 percent).
- 2006: Estimate based on reported data.
- 2007: Estimate based on reported data.
- 2008: Estimate based on trend in reported data. Missing or ignored reported value estimated by interpolation between reported values of 97 percent in 2007 and 96 percent in 2009. 2008 reported data (104 percent) ignored; greater than 100 percent.
- 2009: Estimate based on reported data.

Cuba - RotaC



	1997	1998	1999	2000	2001	2002	2003	2004	2005	2006	2007	2008	2009
Estimate	NA	NA	NA	NA	NA	NA	NA	NA	NA	NA	NA	NA	NA
Reported	NA	NA	NA	NA	NA	NA	NA	NA	NA	NA	NA	NA	NA
Official	NA	NA	NA	NA	NA	NA	NA	NA	NA	NA	NA	NA	NA
Administrative	NA	NA	NA	NA	NA	NA	NA	NA	NA	NA	NA	NA	NA
Survey	NA	NA	NA	NA	NA	NA	NA	NA	NA	NA	NA	NA	NA

Cuba - PnV3



	1997	1998	1999	2000	2001	2002	2003	2004	2005	2006	2007	2008	2009
Estimate	NA	NA	NA	NA	NA	NA	NA	NA	NA	NA	NA	NA	NA
Reported	NA	NA	NA	NA	NA	NA	NA	NA	NA	NA	NA	NA	NA
Official	NA	NA	NA	NA	NA	NA	NA	NA	NA	NA	NA	NA	NA
Administrative	NA	NA	NA	NA	NA	NA	NA	NA	NA	NA	NA	NA	NA
Survey	NA	NA	NA	NA	NA	NA	NA	NA	NA	NA	NA	NA	NA

Cuba - survey details

2005 La Encuesta de Indicadores Múltiples por Conglomerados
2006 de Cuba

Vaccine	Confirmation method	Coverage	Age cohort	Sample	Cards seen
BCG	Card	98	12-23 m	1840	98
BCG	Card or History	100	12-23 m	1840	98
BCG	History	2	12-23 m	1840	98
BCG	C or H <12 months	100	12-23 m	1840	98
DTP1	C or H <12 months	99	12-23 m	1840	98
DTP1	Card	97	12-23 m	1840	98
DTP1	Card or History	100	12-23 m	1840	98
DTP1	History	2	12-23 m	1840	98
DTP3	History	2	12-23 m	1840	98
DTP3	C or H <12 months	86	12-23 m	1840	98

DTP3	Card	91	12-23 m	1840	98
DTP3	Card or History	93	12-23 m	1840	98
Hib3	Card	93	12-23 m	1840	98
Hib3	Card or History	95	12-23 m	1840	98
Hib3	History	2	12-23 m	1840	98
Hib3	C or H <12 months	89	12-23 m	1840	98
MCV	C or H <12 months	83	12-23 m	1840	98
MCV	Card	83	12-23 m	1840	98
MCV	Card or History	86	12-23 m	1840	98
MCV	History	3	12-23 m	1840	98
Pol1	History	30	12-23 m	1840	98
Pol1	C or H <12 months	92	12-23 m	1840	98
Pol1	Card	65	12-23 m	1840	98
Pol1	Card or History	95	12-23 m	1840	98

Further information and estimates for 1980-1996 are available at:

http://www.childinfo.org/immunization_countryreports.html

http://www.who.int/immunization_monitoring/routine/immunization_coverage/en/index4.html