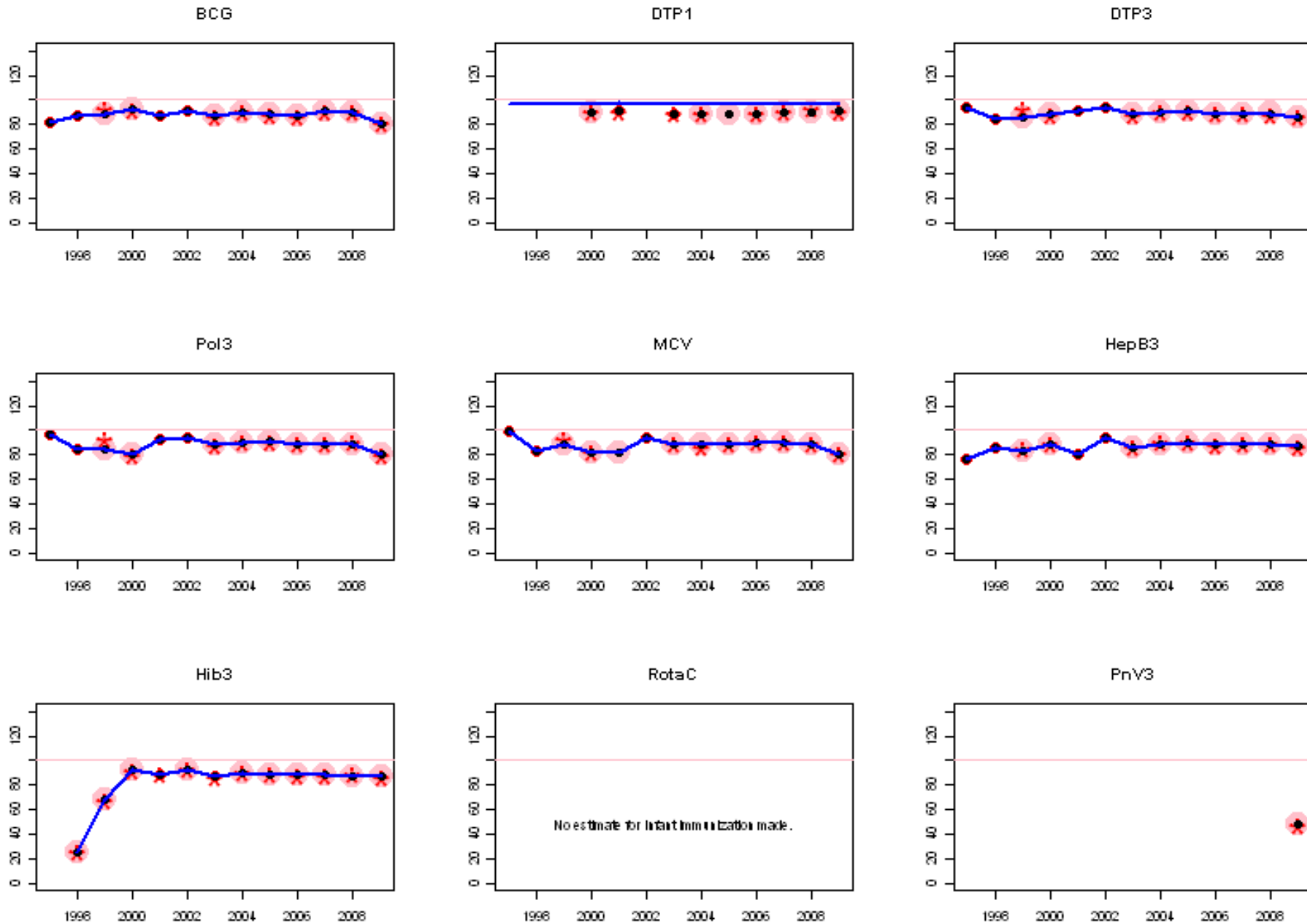
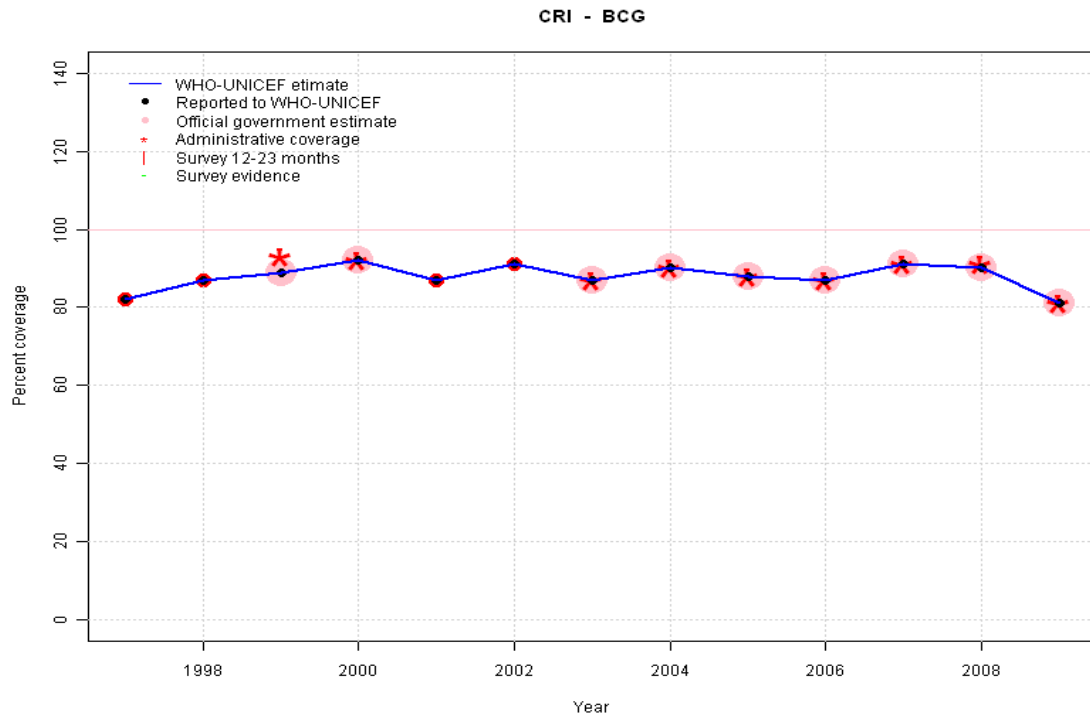


Costa Rica: WHO and UNICEF estimates of immunization coverage, 1997 - 2009



Costa Rica - BCG

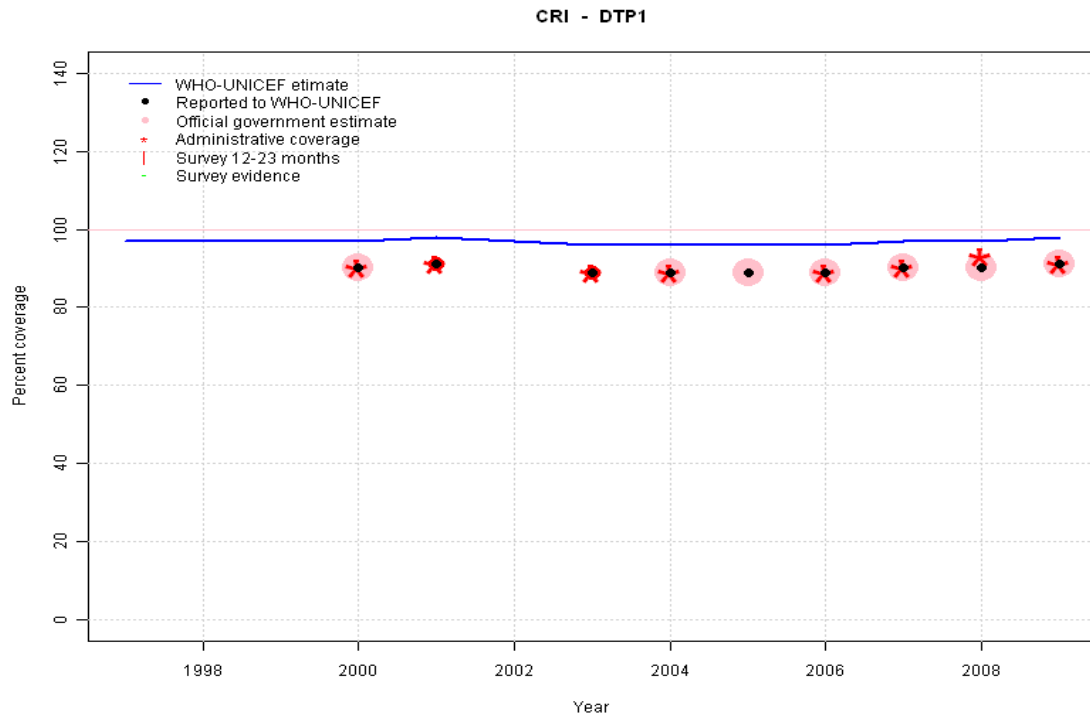
Description:



- 1997: Legacy estimate.
- 1998: Estimate based on reported data.
- 1999: Estimate based on reported data.
- 2000: Estimate based on reported data.
- 2001: Estimate based on reported data.
- 2002: Estimate based on reported data.
- 2003: Estimate based on reported data.
- 2004: Estimate based on reported data.
- 2005: Estimate based on reported data.
- 2006: Estimate based on reported data.
- 2007: Estimate based on reported data.
- 2008: Estimate based on reported data.
- 2009: Estimate based on reported data. Decline is due to change in BCG vaccination procedure in some hospitals (HIV testing required before vaccination)

	1997	1998	1999	2000	2001	2002	2003	2004	2005	2006	2007	2008	2009
Estimate	82	87	89	92	87	91	87	90	88	87	91	90	81
Reported	82	87	89	92	87	91	87	90	88	87	91	90	81
Official	NA	NA	89	92	NA	NA	87	90	88	87	91	90	81
Administrative	NA	NA	93	92	NA	NA	87	90	88	87	91	91	81
Survey	NA	NA	NA	NA	NA	NA	NA	NA	NA	NA	NA	NA	NA

Costa Rica - DTP1



	1997	1998	1999	2000	2001	2002	2003	2004	2005	2006	2007	2008	2009
Estimate	97	97	97	97	98	97	96	96	96	96	97	97	98
Reported	NA	NA	NA	90	91	NA	89	89	89	89	90	90	91
Official	NA	NA	NA	90	NA	NA	NA	89	89	89	90	90	91
Administrative	NA	NA	NA	90	91	NA	89	89	NA	89	90	93	91
Survey	NA	NA	NA	NA	NA	NA	NA	NA	NA	NA	NA	NA	NA

Description:

1997: Legacy estimate.

1998: Estimate calibrated to 1997 level (97 percent) and reported coverage (90 percent).

1999: Estimate calibrated to 1997 level (97 percent) and reported coverage (90 percent).

2000: Estimate calibrated to 1997 level (97 percent) and reported coverage (90 percent).

2001: Estimate calibrated to 1997 level (97 percent) and reported coverage (91 percent).

2002: Estimate calibrated to 1997 level (97 percent) and reported coverage (90 percent).

2003: Estimate calibrated to 1997 level (97 percent) and reported coverage (89 percent).

2004: Estimate calibrated to 1997 level (97 percent) and reported coverage (89 percent).

2005: Estimate calibrated to 1997 level (97 percent) and reported coverage (89 percent).

2006: Estimate calibrated to 1997 level (97 percent) and reported coverage (89 percent).

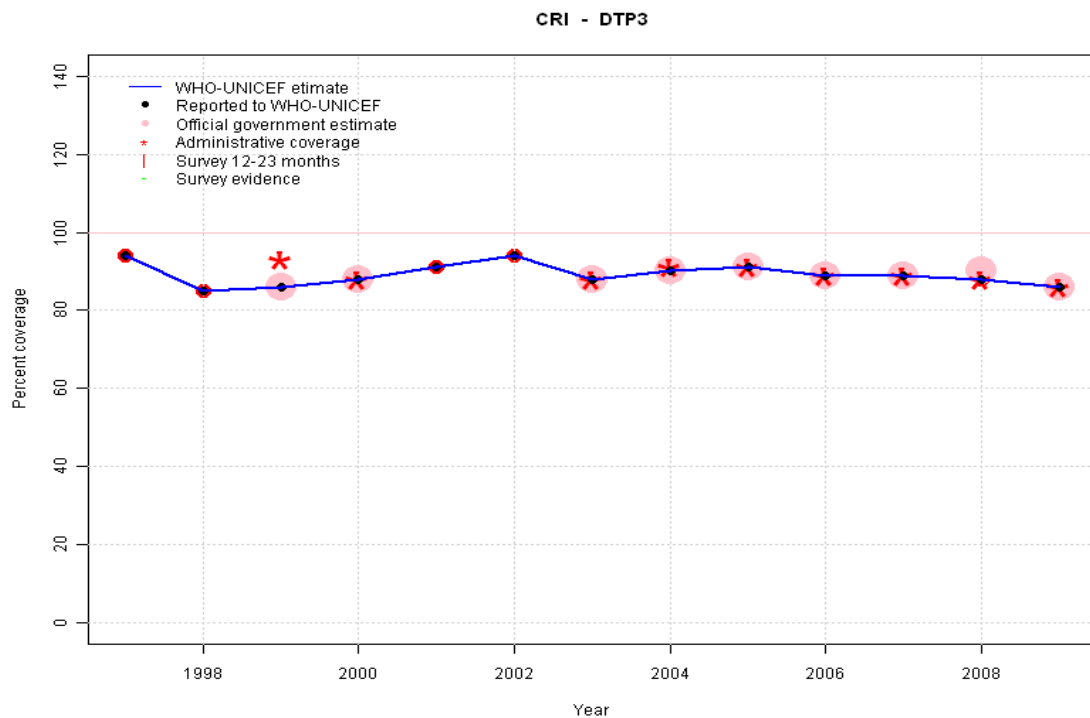
2007: Estimate calibrated to 1997 level (97 percent) and reported coverage (90 percent).

2008: Estimate calibrated to 1997 level (97 percent) and reported coverage (90 percent).

2009: Estimate calibrated to 1997 level (97 percent) and reported coverage (91 percent).

Costa Rica - DTP3

Description:

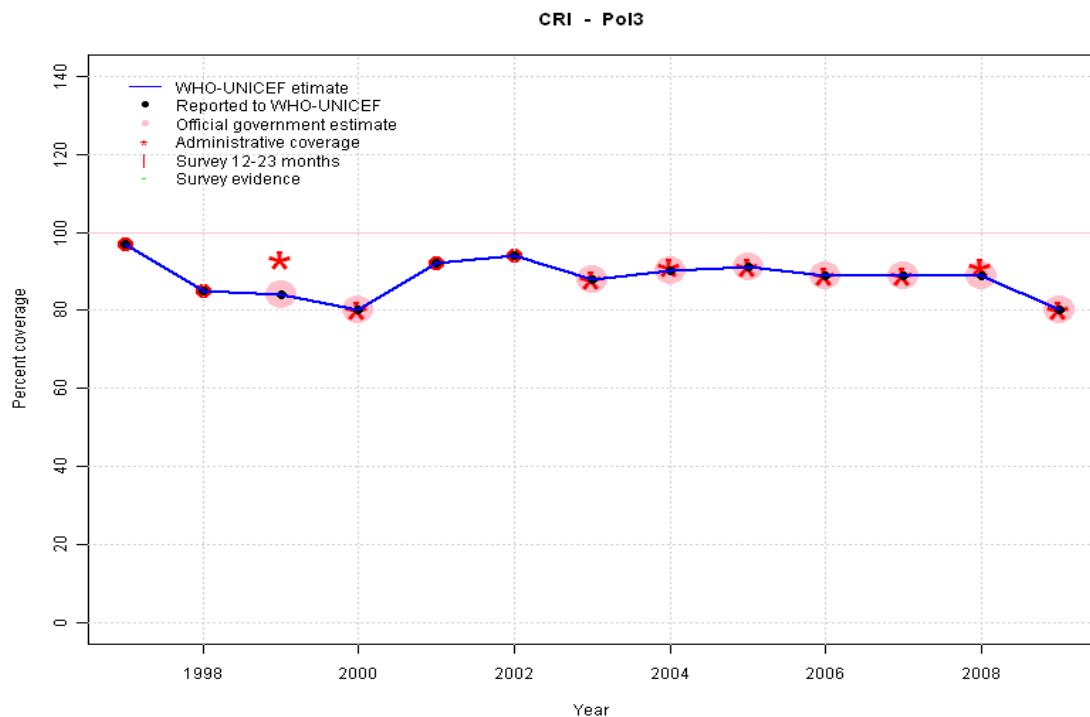


- 1997: Legacy estimate.
- 1998: Estimate based on reported data.
- 1999: Estimate based on reported data.
- 2000: Estimate based on reported data.
- 2001: Estimate based on reported data.
- 2002: Estimate based on reported data.
- 2003: Estimate based on reported data.
- 2004: Estimate based on reported data.
- 2005: Estimate based on reported data.
- 2006: Estimate based on reported data.
- 2007: Estimate based on reported data.
- 2008: Estimate based on reported data.
- 2009: Estimate based on reported data.

	1997	1998	1999	2000	2001	2002	2003	2004	2005	2006	2007	2008	2009
Estimate	94	85	86	88	91	94	88	90	91	89	89	88	86
Reported	94	85	86	88	91	94	88	90	91	89	89	88	86
Official	NA	NA	86	88	NA	NA	88	90	91	89	89	90	86
Administrative	NA	NA	93	88	NA	NA	88	91	91	89	89	88	86
Survey	NA	NA	NA	NA	NA	NA	NA	NA	NA	NA	NA	NA	NA

Costa Rica - Pol3

Description:

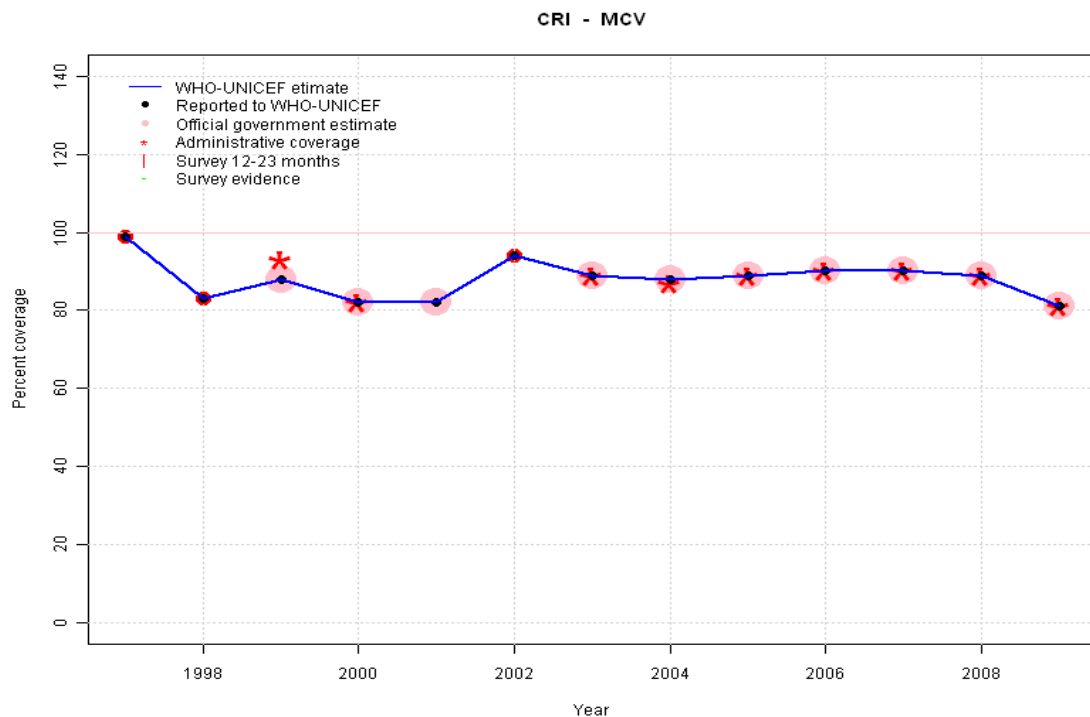


- 1997: Legacy estimate.
- 1998: Estimate based on reported data.
- 1999: Estimate based on reported data.
- 2000: Estimate based on reported data.
- 2001: Estimate based on reported data.
- 2002: Estimate based on reported data.
- 2003: Estimate based on reported data.
- 2004: Estimate based on reported data.
- 2005: Estimate based on reported data.
- 2006: Estimate based on reported data.
- 2007: Estimate based on reported data.
- 2008: Estimate based on reported data.
- 2009: Estimate based on reported data. Vaccine stock out for 3-6 months

	1997	1998	1999	2000	2001	2002	2003	2004	2005	2006	2007	2008	2009
Estimate	97	85	84	80	92	94	88	90	91	89	89	89	80
Reported	97	85	84	80	92	94	88	90	91	89	89	89	80
Official	NA	NA	84	80	NA	NA	88	90	91	89	89	89	80
Administrative	NA	NA	93	80	NA	NA	88	91	91	89	89	91	80
Survey	NA	NA	NA	NA	NA	NA	NA	NA	NA	NA	NA	NA	NA

Costa Rica - MCV

Description:



1997: Legacy estimate.
 1998: Estimate based on reported data.
 1999: Estimate based on reported data.
 2000: Estimate based on reported data.
 2001: Estimate based on reported data.
 2002: Estimate based on reported data.
 2003: Estimate based on reported data.
 2004: Estimate based on reported data.
 2005: Estimate based on reported data.
 2006: Estimate based on reported data.
 2007: Estimate based on reported data.
 2008: Estimate based on reported data.
 2009: Estimate based on reported data.

	1997	1998	1999	2000	2001	2002	2003	2004	2005	2006	2007	2008	2009
Estimate	99	83	88	82	82	94	89	88	89	90	90	89	81
Reported	99	83	88	82	82	94	89	88	89	90	90	89	81
Official	NA	NA	88	82	82	NA	89	88	89	90	90	89	81
Administrative	NA	NA	93	82	NA	NA	89	87	89	90	90	89	81
Survey	NA	NA	NA	NA	NA	NA	NA	NA	NA	NA	NA	NA	NA

Costa Rica - HepB3

Description:

1997: Legacy estimate. HepB introduced nationally in 2000 reporting started in 1997.

1998: Estimate based on reported data.

1999: Estimate based on reported data.

2000: Estimate based on reported data.

2001: Estimate based on reported data.

2002: Estimate based on reported data.

2003: Estimate based on reported data.

2004: Estimate based on reported data.

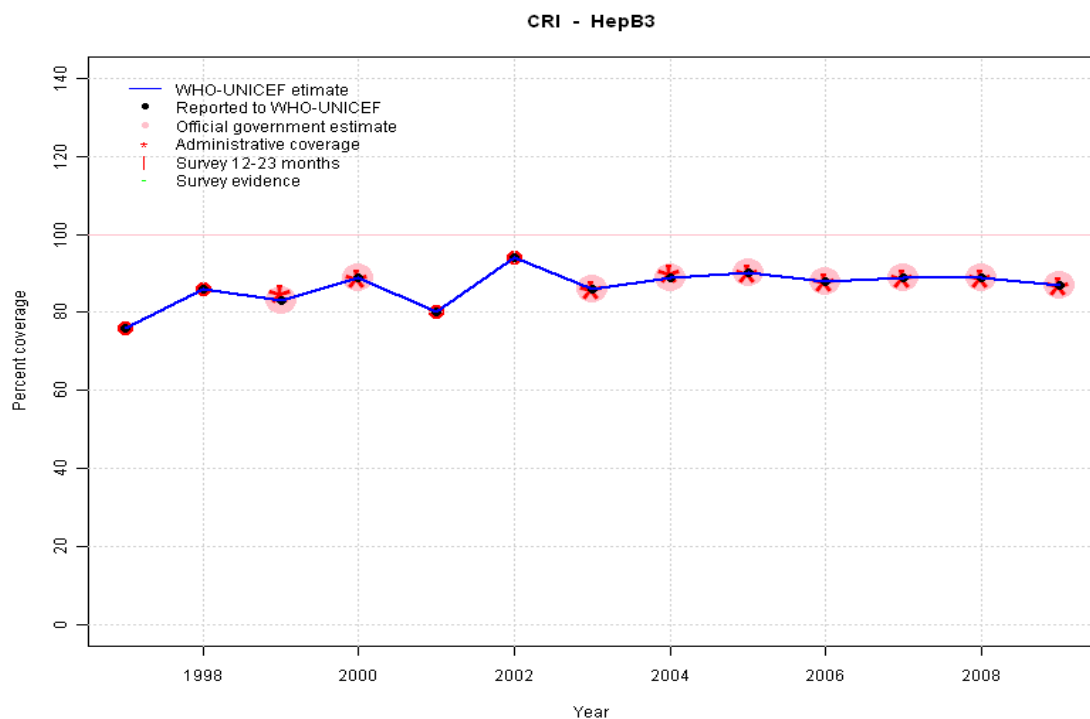
2005: Estimate based on reported data.

2006: Estimate based on reported data.

2007: Estimate based on reported data.

2008: Estimate based on reported data.

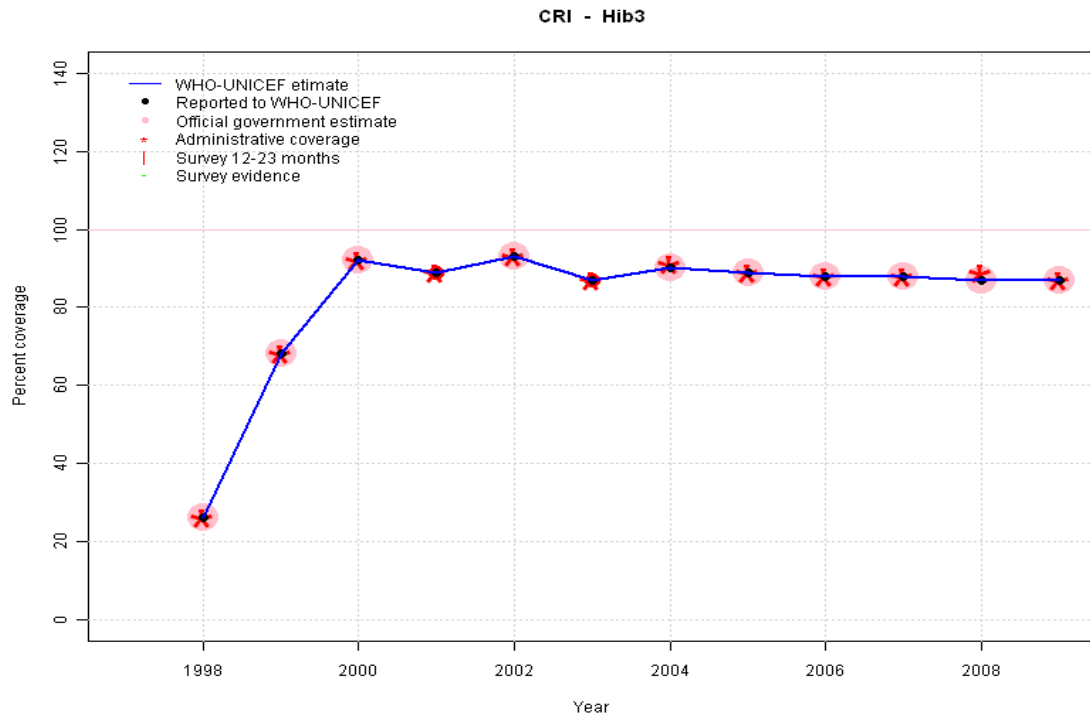
2009: Estimate based on reported data.



	1997	1998	1999	2000	2001	2002	2003	2004	2005	2006	2007	2008	2009
Estimate	76	86	83	89	80	94	86	89	90	88	89	89	87
Reported	76	86	83	89	80	94	86	89	90	88	89	89	87
Official	NA	NA	83	89	NA	NA	86	89	90	88	89	89	87
Administrative	NA	NA	85	89	NA	NA	86	90	90	88	89	89	87
Survey	NA	NA	NA	NA	NA	NA	NA	NA	NA	NA	NA	NA	NA

Costa Rica - Hib3

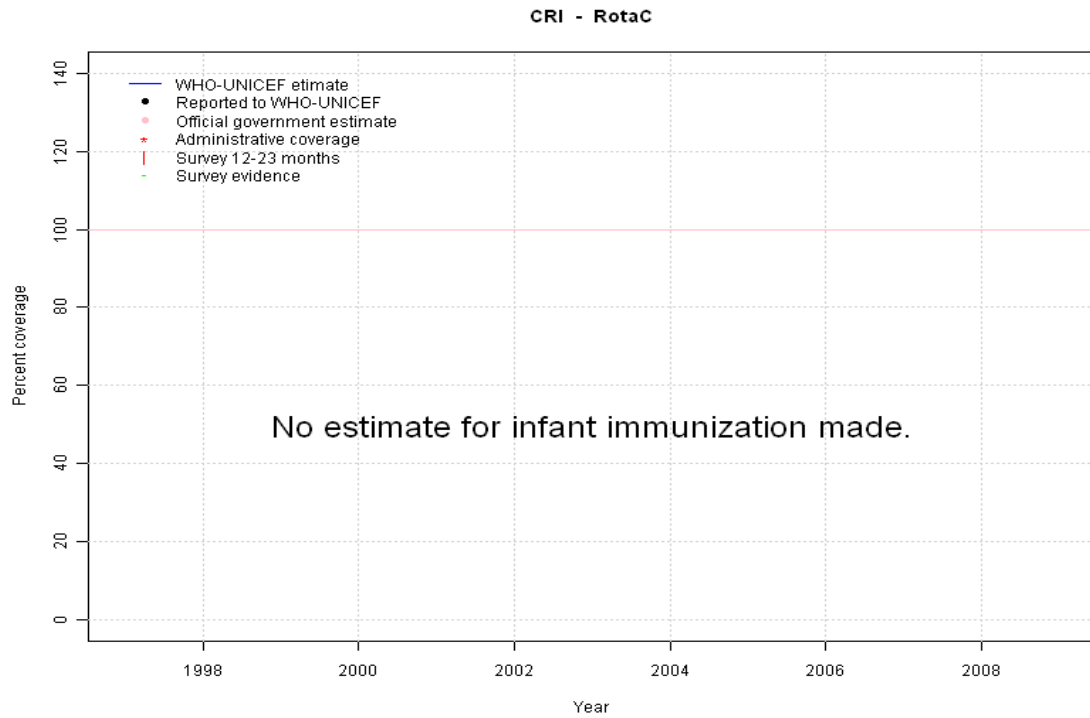
Description:



1998: Estimate based on reported data. Hib introduced in 1998
 1999: Estimate based on reported data.
 2000: Estimate based on reported data.
 2001: Estimate based on reported data.
 2002: Estimate based on reported data.
 2003: Estimate based on reported data.
 2004: Estimate based on reported data.
 2005: Estimate based on reported data.
 2006: Estimate based on reported data.
 2007: Estimate based on reported data.
 2008: Estimate based on reported data.
 2009: Estimate based on reported data.

	1997	1998	1999	2000	2001	2002	2003	2004	2005	2006	2007	2008	2009
Estimate	NA	26	68	92	89	93	87	90	89	88	88	87	87
Reported	NA	26	68	92	89	93	87	90	89	88	88	87	87
Official	NA	26	68	92	NA	93	NA	90	89	88	88	87	87
Administrative	NA	26	68	92	89	93	87	91	89	88	88	89	87
Survey	NA	NA	NA	NA	NA	NA	NA	NA	NA	NA	NA	NA	NA

Costa Rica - RotaC

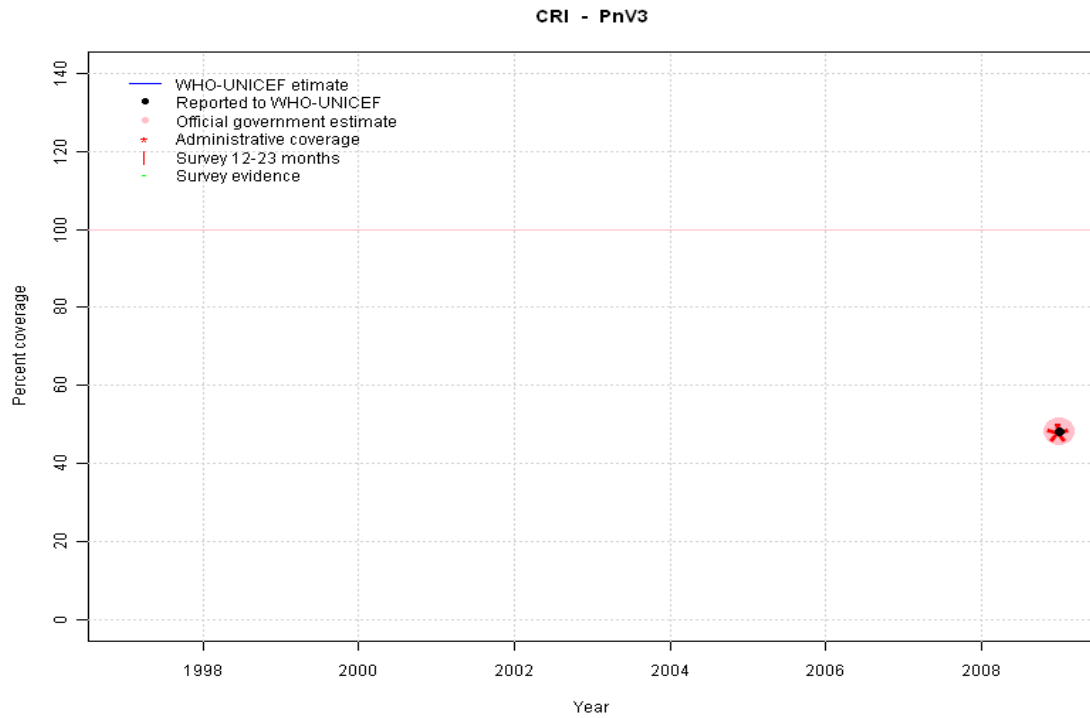


	1997	1998	1999	2000	2001	2002	2003	2004	2005	2006	2007	2008	2009
Estimate	NA	NA	NA	NA	NA	NA	NA	NA	NA	NA	NA	NA	NA
Reported	NA	NA	NA	NA	NA	NA	NA	NA	NA	NA	NA	NA	NA
Official	NA	NA	NA	NA	NA	NA	NA	NA	NA	NA	NA	NA	NA
Administrative	NA	NA	NA	NA	NA	NA	NA	NA	NA	NA	NA	NA	NA
Survey	NA	NA	NA	NA	NA	NA	NA	NA	NA	NA	NA	NA	NA

Costa Rica - PnV3

Description:

2009: Estimate based on reported data.



	1997	1998	1999	2000	2001	2002	2003	2004	2005	2006	2007	2008	2009
Estimate	NA	NA	NA	NA	NA	NA	NA	NA	NA	NA	NA	NA	48
Reported	NA	NA	NA	NA	NA	NA	NA	NA	NA	NA	NA	NA	48
Official	NA	NA	NA	NA	NA	NA	NA	NA	NA	NA	NA	NA	48
Administrative	NA	NA	NA	NA	NA	NA	NA	NA	NA	NA	NA	NA	48
Survey	NA	NA	NA	NA	NA	NA	NA	NA	NA	NA	NA	NA	NA

Further information and estimates for 1980-1996 are available at:

http://www.childinfo.org/immunization_countryreports.html

http://www.who.int/immunization_monitoring/routine/immunization_coverage/en/index4.html