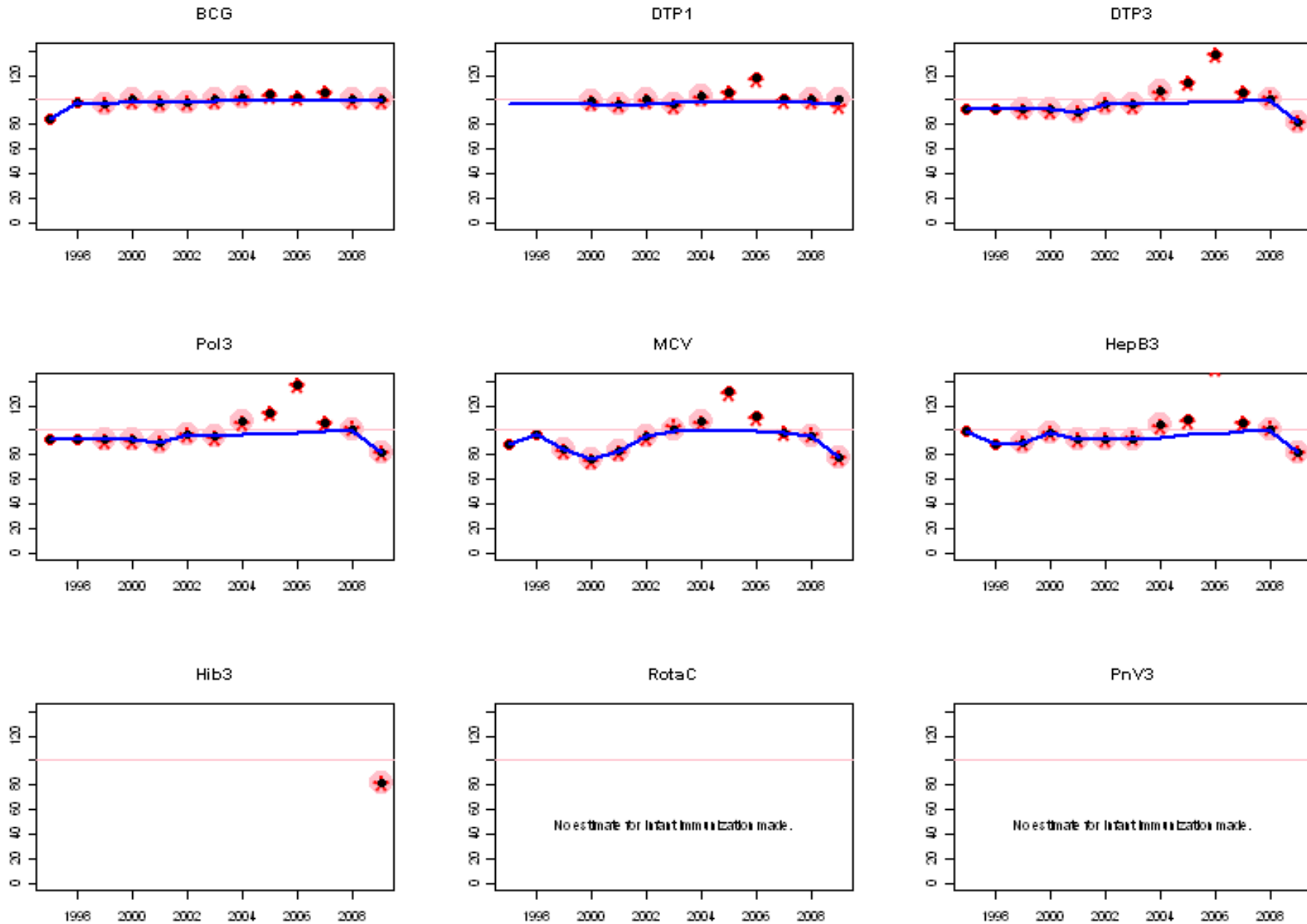
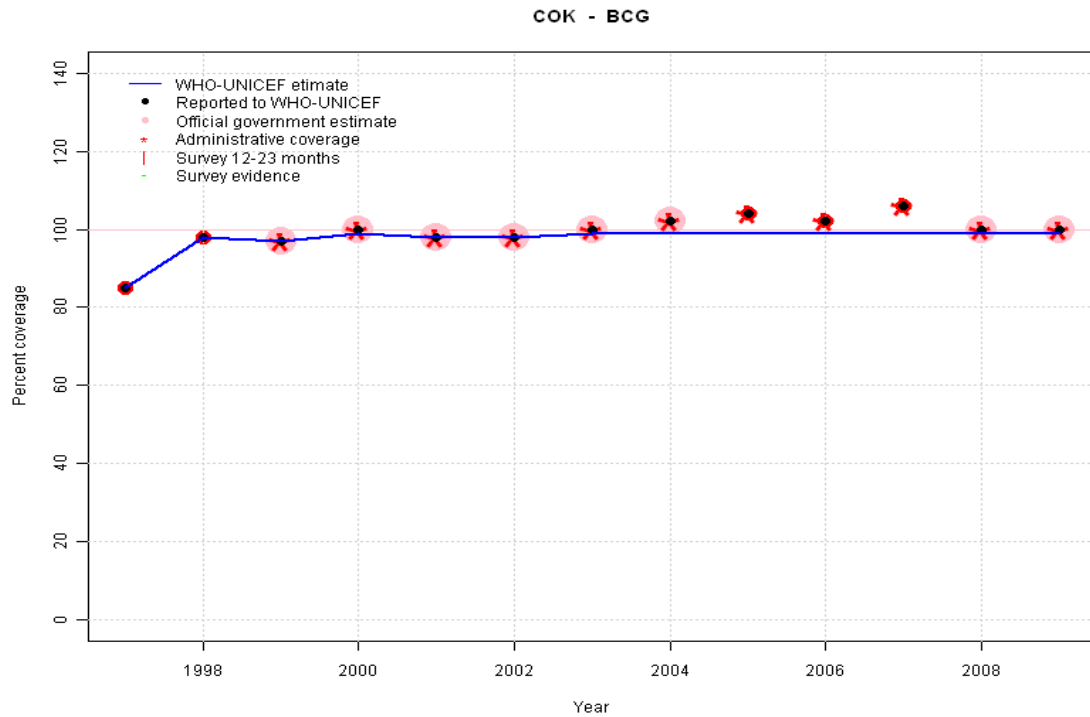


Cook Islands: WHO and UNICEF estimates of immunization coverage, 1997 - 2009



Cook Islands - BCG



	1997	1998	1999	2000	2001	2002	2003	2004	2005	2006	2007	2008	2009
Estimate	85	98	97	99	98	98	99	99	99	99	99	99	99
Reported	85	98	97	100	98	98	100	102	104	102	106	100	100
Official	NA	NA	97	100	98	98	100	102	NA	NA	NA	100	100
Administrative	NA	NA	97	100	98	98	100	102	104	102	106	100	100
Survey	NA	NA	NA	NA	NA	NA	NA	NA	NA	NA	NA	NA	NA

Description:

1997: Legacy estimate.

1998: Estimate based on reported data.

1999: Estimate based on reported data.

2000: Estimate based on reported data.

2001: Estimate based on reported data.

2002: Estimate based on reported data.

2003: Estimate based on reported data.

2004: Estimate based on trend in reported data. Missing or ignored reported value estimated by interpolation between reported values of 100 percent in 2003 and 100 percent in 2008. 2004 reported data (102 percent) ignored; greater than 100 percent.

2005: Estimate based on trend in reported data. Missing or ignored reported value estimated by interpolation between reported values of 100 percent in 2003 and 100 percent in 2008. 2005 reported data (104 percent) ignored; greater than 100 percent.

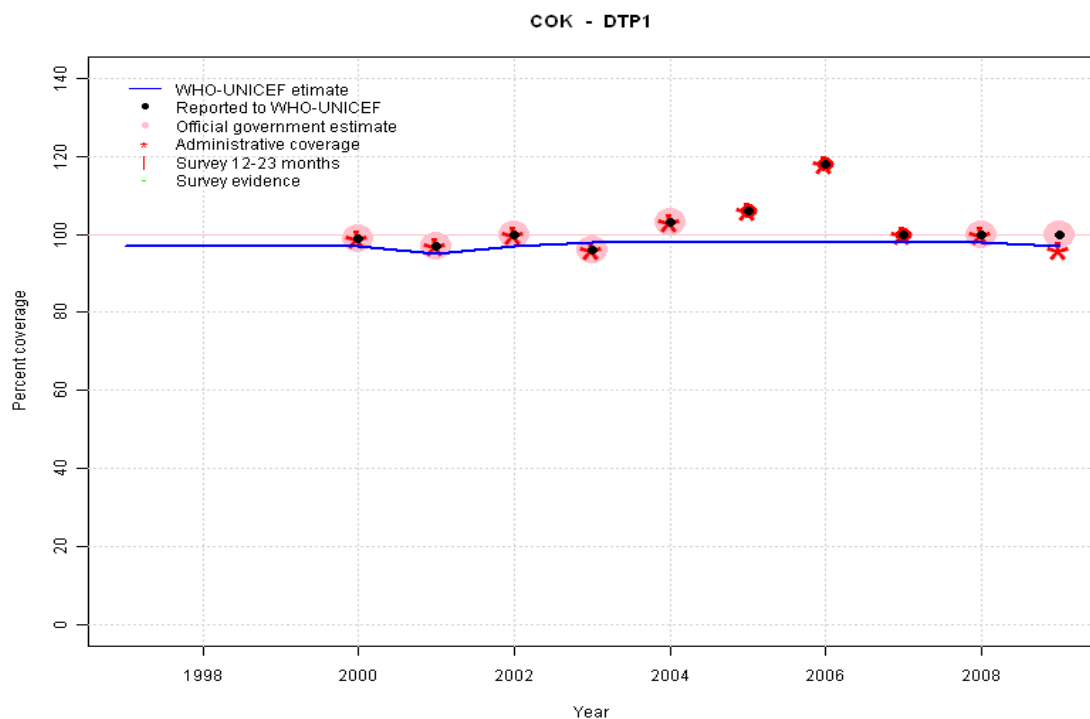
2006: Estimate based on trend in reported data. Missing or ignored reported value estimated by interpolation between reported values of 100 percent in 2003 and 100 percent in 2008. 2006 reported data (102 percent) ignored; greater than 100 percent.

2007: Estimate based on trend in reported data. Missing or ignored reported value estimated by interpolation between reported values of 100 percent in 2003 and 100 percent in 2008. 2007 reported data (106 percent) ignored; greater than 100 percent.

2008: Estimate based on reported data.

2009: Estimate based on reported data.

Cook Islands - DTP1

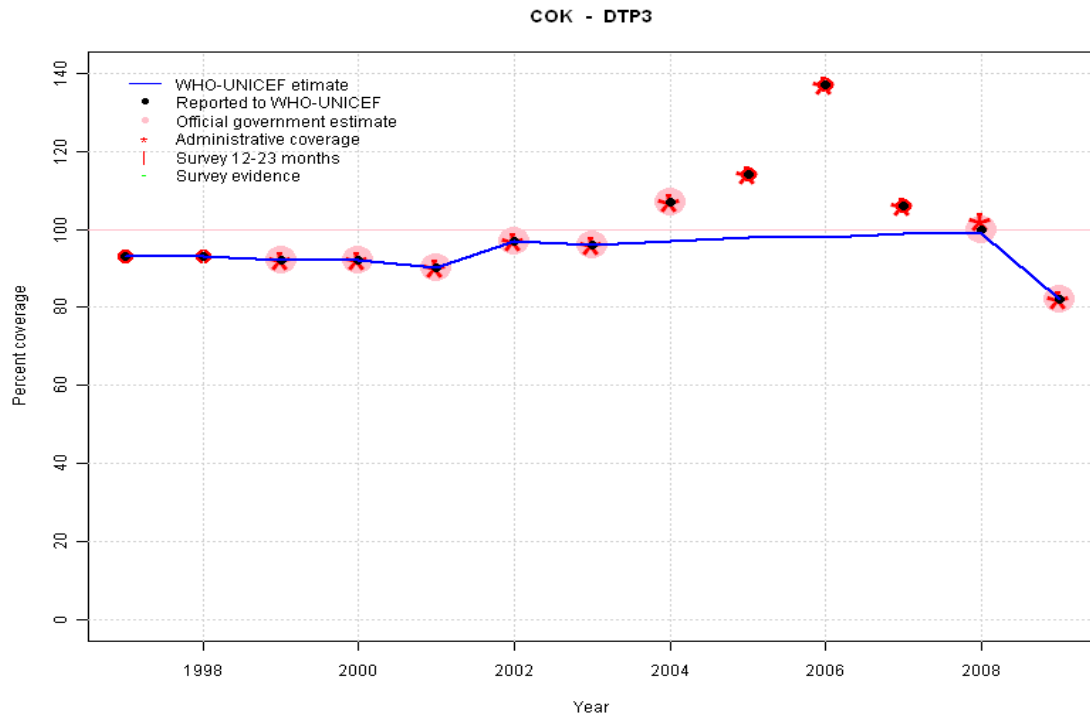


Description:

- 1997: Legacy estimate.
- 1998: Estimate calibrated to 1997 level (97 percent) and reported coverage (99 percent).
- 1999: Estimate calibrated to 1997 level (97 percent) and reported coverage (99 percent).
- 2000: Estimate calibrated to 1997 level (97 percent) and reported coverage (99 percent).
- 2001: Estimate calibrated to 1997 level (97 percent) and reported coverage (97 percent).
- 2002: Estimate calibrated to 1997 level (97 percent) and reported coverage (99 percent).
- 2003: Estimated DTP3 greater than estimated DTP1; DTP1 estimate based on the relationship between DTP1 and DTP3 from 282 surveys.
- 2004: Estimated DTP3 greater than estimated DTP1; DTP1 estimate based on the relationship between DTP1 and DTP3 from 282 surveys.
- 2005: Estimated DTP3 greater than estimated DTP1; DTP1 estimate based on the relationship between DTP1 and DTP3 from 282 surveys.
- 2006: Estimated DTP3 greater than estimated DTP1; DTP1 estimate based on the relationship between DTP1 and DTP3 from 282 surveys.
- 2007: Estimated DTP3 greater than estimated DTP1; DTP1 estimate based on the relationship between DTP1 and DTP3 from 282 surveys.
- 2008: Estimated DTP3 greater than estimated DTP1; DTP1 estimate based on the relationship between DTP1 and DTP3 from 282 surveys.
- 2009: Estimate calibrated to 1997 level (97 percent) and reported coverage (99 percent).

	1997	1998	1999	2000	2001	2002	2003	2004	2005	2006	2007	2008	2009
Estimate	97	97	97	97	95	97	98	98	98	98	98	98	97
Reported	NA	NA	NA	99	97	100	96	103	106	118	100	100	100
Official	NA	NA	NA	99	97	100	96	103	NA	NA	NA	100	100
Administrative	NA	NA	NA	99	97	100	96	103	106	118	100	100	96
Survey	NA	NA	NA	NA	NA	NA	NA	NA	NA	NA	NA	NA	NA

Cook Islands - DTP3



	1997	1998	1999	2000	2001	2002	2003	2004	2005	2006	2007	2008	2009
Estimate	93	93	92	92	90	97	96	97	98	98	99	99	82
Reported	93	93	92	92	90	97	96	107	114	137	106	100	82
Official	NA	NA	92	92	90	97	96	107	NA	NA	NA	100	82
Administrative	NA	NA	92	92	90	97	96	107	114	137	106	102	82
Survey	NA	NA	NA	NA	NA	NA	NA	NA	NA	NA	NA	NA	NA

Description:

1997: Legacy estimate.

1998: Estimate based on reported data.

1999: Estimate based on reported data.

2000: Estimate based on reported data.

2001: Estimate based on reported data.

2002: Estimate based on reported data.

2003: Estimate based on reported data.

2004: Estimate based on trend in reported data. Missing or ignored reported value estimated by interpolation between reported values of 96 percent in 2003 and 100 percent in 2008. 2004 reported data (107 percent) ignored; greater than 100 percent.

2005: Estimate based on trend in reported data. Missing or ignored reported value estimated by interpolation between reported values of 96 percent in 2003 and 100 percent in 2008. 2005 reported data (114 percent) ignored; greater than 100 percent.

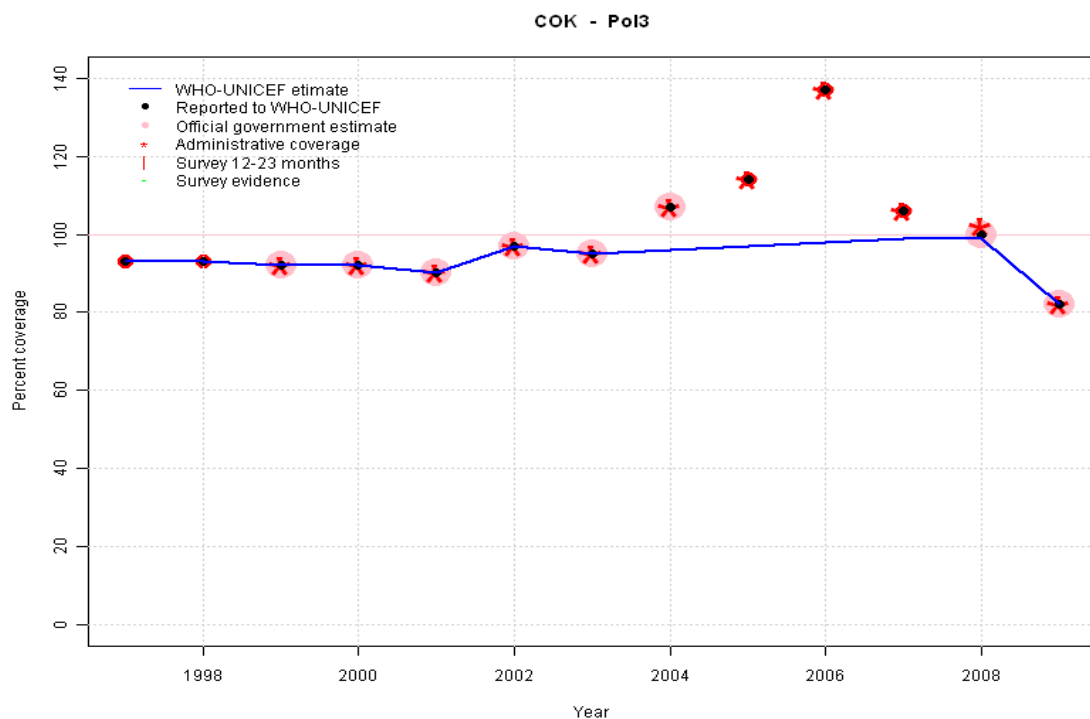
2006: Estimate based on trend in reported data. Missing or ignored reported value estimated by interpolation between reported values of 96 percent in 2003 and 100 percent in 2008. 2006 reported data (137 percent) ignored; greater than 100 percent.

2007: Estimate based on trend in reported data. Missing or ignored reported value estimated by interpolation between reported values of 96 percent in 2003 and 100 percent in 2008. 2007 reported data (106 percent) ignored; greater than 100 percent.

2008: Estimate based on reported data.

2009: Estimate based on reported data. Pentavalent DTP-HebB-Hib vaccine introduced in June 2009.

Cook Islands - Pol3



	1997	1998	1999	2000	2001	2002	2003	2004	2005	2006	2007	2008	2009
Estimate	93	93	92	92	90	97	95	96	97	98	99	99	82
Reported	93	93	92	92	90	97	95	107	114	137	106	100	82
Official	NA	NA	92	92	90	97	95	107	NA	NA	NA	100	82
Administrative	NA	NA	92	92	90	97	95	107	114	137	106	102	82
Survey	NA	NA	NA	NA	NA	NA	NA	NA	NA	NA	NA	NA	NA

Description:

1997: Legacy estimate.

1998: Estimate based on reported data.

1999: Estimate based on reported data.

2000: Estimate based on reported data.

2001: Estimate based on reported data.

2002: Estimate based on reported data.

2003: Estimate based on reported data.

2004: Estimate based on trend in reported data. Missing or ignored reported value estimated by interpolation between reported values of 95 percent in 2003 and 100 percent in 2008. 2004 reported data (107 percent) ignored; greater than 100 percent.

2005: Estimate based on trend in reported data. Missing or ignored reported value estimated by interpolation between reported values of 95 percent in 2003 and 100 percent in 2008. 2005 reported data (114 percent) ignored; greater than 100 percent.

2006: Estimate based on trend in reported data. Missing or ignored reported value estimated by interpolation between reported values of 95 percent in 2003 and 100 percent in 2008. 2006 reported data (137 percent) ignored; greater than 100 percent.

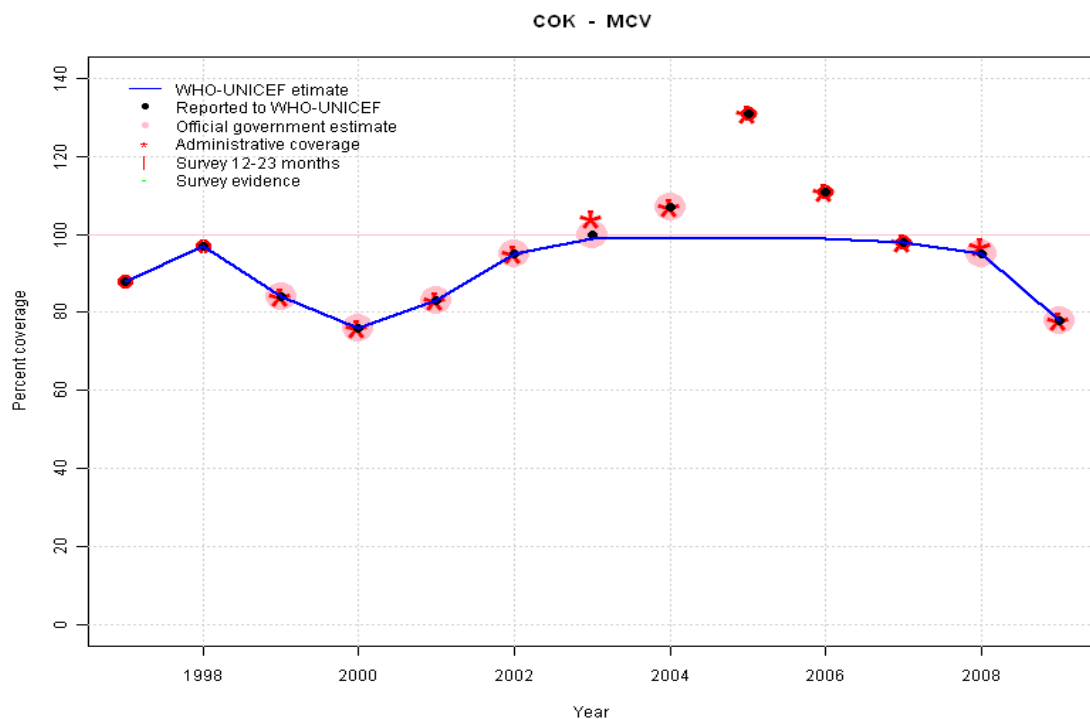
2007: Estimate based on trend in reported data. Missing or ignored reported value estimated by interpolation between reported values of 95 percent in 2003 and 100 percent in 2008. 2007 reported data (106 percent) ignored; greater than 100 percent.

2008: Estimate based on reported data.

2009: Estimate based on reported data. The country adopted a new OPV schedule in June 2009.

Cook Islands - MCV

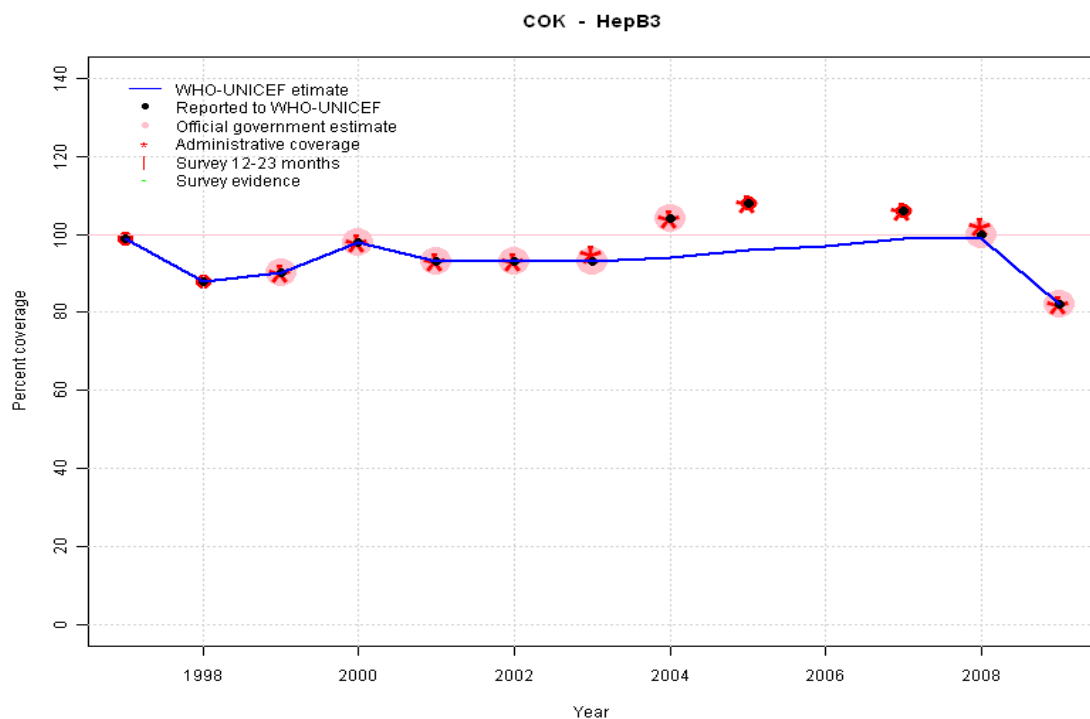
Description:



- 1997: Legacy estimate.
- 1998: Estimate based on reported data.
- 1999: Estimate based on reported data.
- 2000: Estimate based on reported data.
- 2001: Estimate based on reported data.
- 2002: Estimate based on reported data.
- 2003: Estimate based on reported data.
- 2004: Estimate based on trend in reported data. Missing or ignored reported value estimated by interpolation between reported values of 100 percent in 2003 and 98 percent in 2007. 2004 reported data (107 percent) ignored; greater than 100 percent.
- 2005: Estimate based on trend in reported data. Missing or ignored reported value estimated by interpolation between reported values of 100 percent in 2003 and 98 percent in 2007. 2005 reported data (131 percent) ignored; greater than 100 percent.
- 2006: Estimate based on trend in reported data. Missing or ignored reported value estimated by interpolation between reported values of 100 percent in 2003 and 98 percent in 2007. 2006 reported data (111 percent) ignored; greater than 100 percent.
- 2007: Estimate based on reported data.
- 2008: Estimate based on reported data.
- 2009: Estimate based on reported data. MMR vaccine introduced in June 2009.

	1997	1998	1999	2000	2001	2002	2003	2004	2005	2006	2007	2008	2009
Estimate	88	97	84	76	83	95	99	99	99	99	98	95	78
Reported	88	97	84	76	83	95	100	107	131	111	98	95	78
Official	NA	NA	84	76	83	95	100	107	NA	NA	NA	95	78
Administrative	NA	NA	84	76	83	95	104	107	131	111	98	97	78
Survey	NA	NA	NA	NA	NA	NA	NA	NA	NA	NA	NA	NA	NA

Cook Islands - HepB3



	1997	1998	1999	2000	2001	2002	2003	2004	2005	2006	2007	2008	2009
Estimate	99	88	90	98	93	93	93	94	96	97	99	99	82
Reported	99	88	90	98	93	93	93	104	108	151	106	100	82
Official	NA	NA	90	98	93	93	93	104	NA	NA	NA	100	82
Administrative	NA	NA	90	98	93	93	95	104	108	151	106	102	82
Survey	NA	NA	NA	NA	NA	NA	NA	NA	NA	NA	NA	NA	NA

Description:

1997: Legacy estimate.

1998: Estimate based on reported data.

1999: Estimate based on reported data.

2000: Estimate based on reported data.

2001: Estimate based on reported data.

2002: Estimate based on reported data.

2003: Estimate based on reported data.

2004: Estimate based on trend in reported data. Missing or ignored reported value estimated by interpolation between reported values of 93 percent in 2003 and 100 percent in 2008. 2004 reported data (104 percent) ignored; greater than 100 percent.

2005: Estimate based on trend in reported data. Missing or ignored reported value estimated by interpolation between reported values of 93 percent in 2003 and 100 percent in 2008. 2005 reported data (108 percent) ignored; greater than 100 percent.

2006: Estimate based on trend in reported data. Missing or ignored reported value estimated by interpolation between reported values of 93 percent in 2003 and 100 percent in 2008. 2006 reported data (151 percent) ignored; greater than 100 percent.

2007: Estimate based on trend in reported data. Missing or ignored reported value estimated by interpolation between reported values of 93 percent in 2003 and 100 percent in 2008. 2007 reported data (106 percent) ignored; greater than 100 percent.

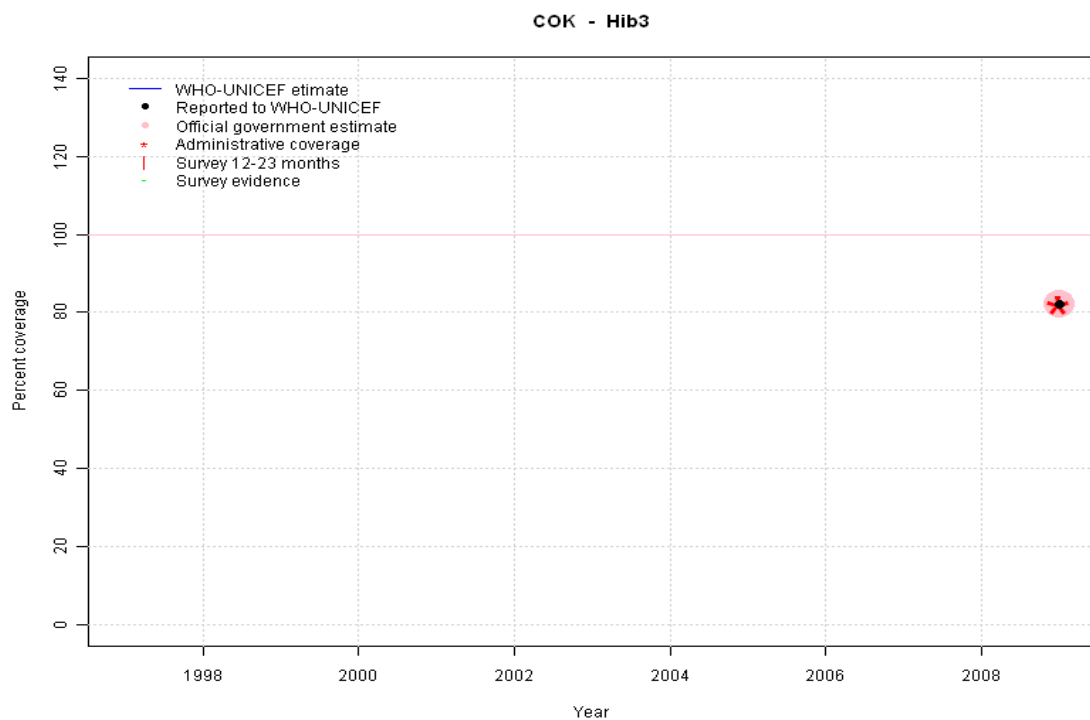
2008: Estimate based on reported data.

2009: Estimate based on reported data. Pentavalent DTP-HebB-Hib vaccine introduced in June 2009.

Cook Islands - Hib3

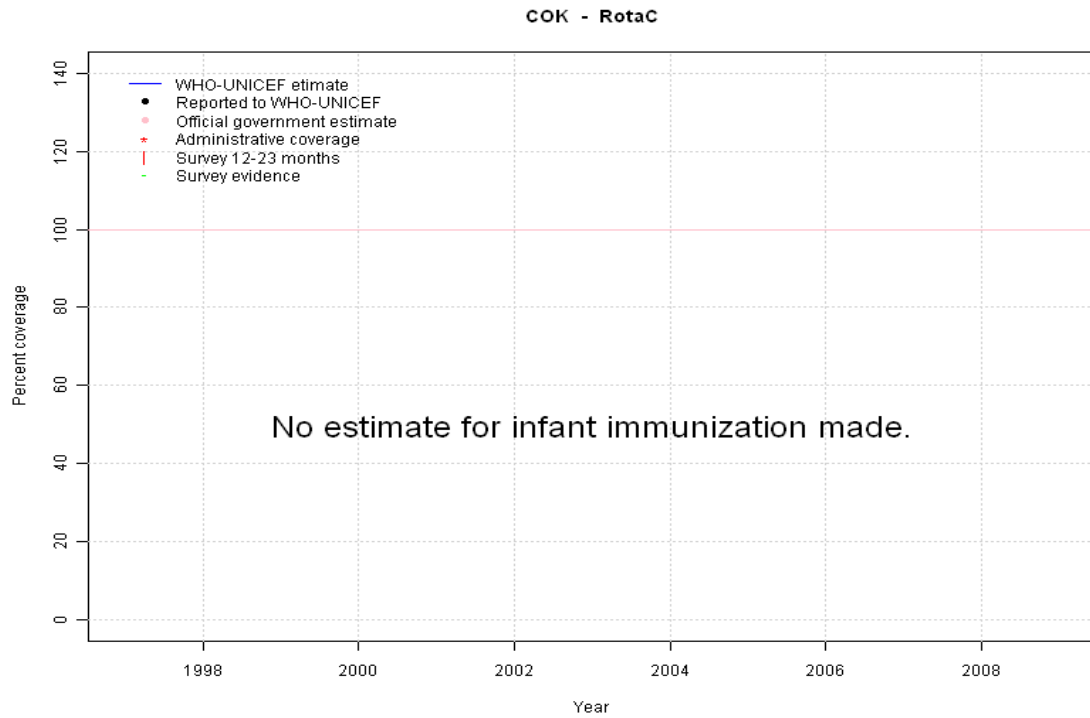
Description:

2009: Estimate based on reported data. Hib introduced in 2009, Pentavalent DTP-HebB-Hib vaccine introduced in June 2009.



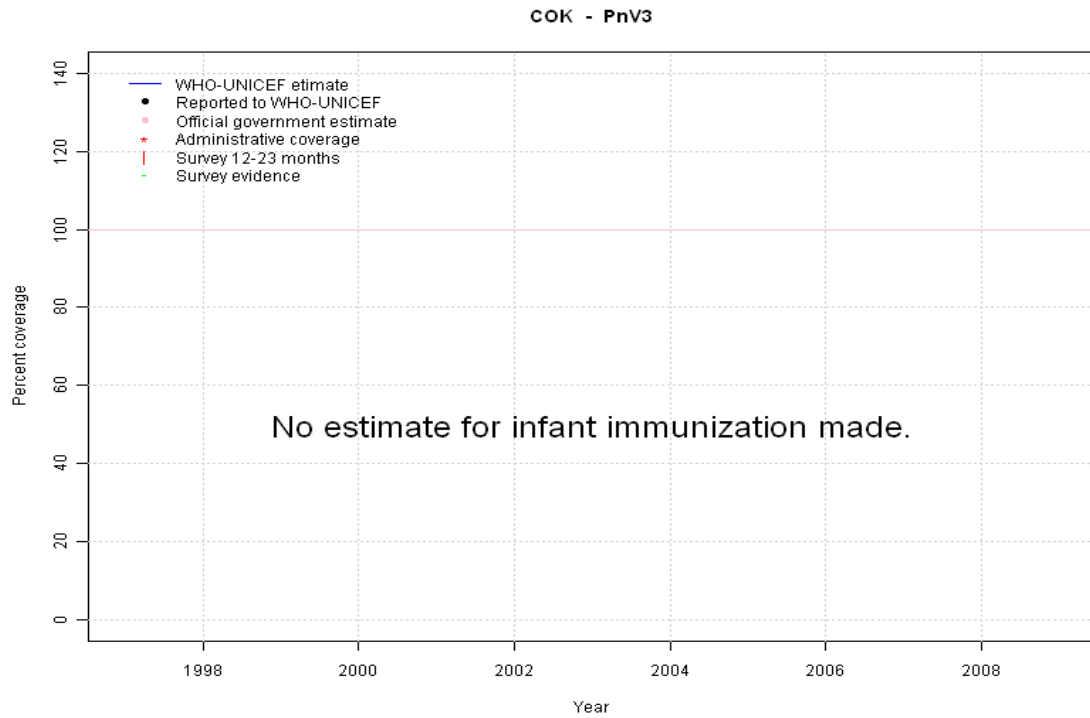
	1997	1998	1999	2000	2001	2002	2003	2004	2005	2006	2007	2008	2009
Estimate	NA	NA	NA	NA	NA	NA	NA	NA	NA	NA	NA	NA	82
Reported	NA	NA	NA	NA	NA	NA	NA	NA	NA	NA	NA	NA	82
Official	NA	NA	NA	NA	NA	NA	NA	NA	NA	NA	NA	NA	82
Administrative	NA	NA	NA	NA	NA	NA	NA	NA	NA	NA	NA	NA	82
Survey	NA	NA	NA	NA	NA	NA	NA	NA	NA	NA	NA	NA	NA

Cook Islands - RotaC



	1997	1998	1999	2000	2001	2002	2003	2004	2005	2006	2007	2008	2009
Estimate	NA	NA	NA	NA	NA	NA	NA	NA	NA	NA	NA	NA	NA
Reported	NA	NA	NA	NA	NA	NA	NA	NA	NA	NA	NA	NA	NA
Official	NA	NA	NA	NA	NA	NA	NA	NA	NA	NA	NA	NA	NA
Administrative	NA	NA	NA	NA	NA	NA	NA	NA	NA	NA	NA	NA	NA
Survey	NA	NA	NA	NA	NA	NA	NA	NA	NA	NA	NA	NA	NA

Cook Islands - PnV3



	1997	1998	1999	2000	2001	2002	2003	2004	2005	2006	2007	2008	2009
Estimate	NA	NA	NA	NA	NA	NA	NA	NA	NA	NA	NA	NA	NA
Reported	NA	NA	NA	NA	NA	NA	NA	NA	NA	NA	NA	NA	NA
Official	NA	NA	NA	NA	NA	NA	NA	NA	NA	NA	NA	NA	NA
Administrative	NA	NA	NA	NA	NA	NA	NA	NA	NA	NA	NA	NA	NA
Survey	NA	NA	NA	NA	NA	NA	NA	NA	NA	NA	NA	NA	NA

Further information and estimates for 1980-1996 are available at:

http://www.childinfo.org/immunization_countryreports.html

http://www.who.int/immunization_monitoring/routine/immunization_coverage/en/index4.html