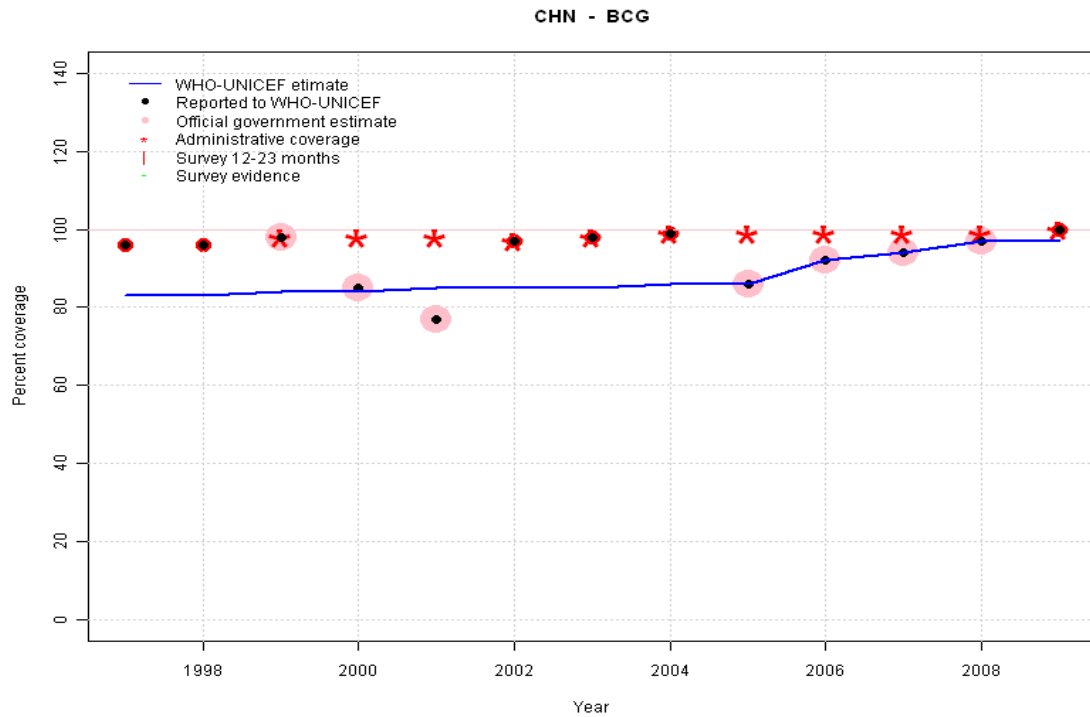


China - BCG



	1997	1998	1999	2000	2001	2002	2003	2004	2005	2006	2007	2008	2009
Estimate	83	83	84	84	85	85	85	86	86	92	94	97	97
Reported	96	96	98	85	77	97	98	99	86	92	94	97	100
Official	NA	NA	98	85	77	NA	NA	NA	86	92	94	97	NA
Administrative	NA	NA	98	98	98	97	98	99	99	99	99	99	100
Survey	NA	NA	NA	NA	NA	NA	NA	NA	NA	NA	NA	NA	NA

Description:

1997: Legacy estimate.

1998: Estimate based on working group decision to interpolated between 1997 and 2005. Fluctuation in officially reported data reflects different methods of correction for missing data.

1999: Estimate based on working group decision to interpolated between 1997 and 2005. Fluctuation in officially reported data reflects different methods of correction for missing data.

2000: Estimate based on working group decision to interpolated between 1997 and 2005. Fluctuation in officially reported data reflects different methods of correction for missing data.

2001: Estimate based on working group decision to interpolated between 1997 and 2005. Fluctuation in officially reported data reflects different methods of correction for missing data.

2002: Estimate based on working group decision to interpolated between 1997 and 2005. Fluctuation in officially reported data reflects different methods of correction for missing data.

2003: Estimate based on working group decision to interpolated between 1997 and 2005. Fluctuation in officially reported data reflects different methods of correction for missing data.

2004: Estimate based on working group decision to interpolated between 1997 and 2005. Fluctuation in officially reported data reflects different methods of correction for missing data.

2005: Improved methodology incorporates adjustment for missing data.

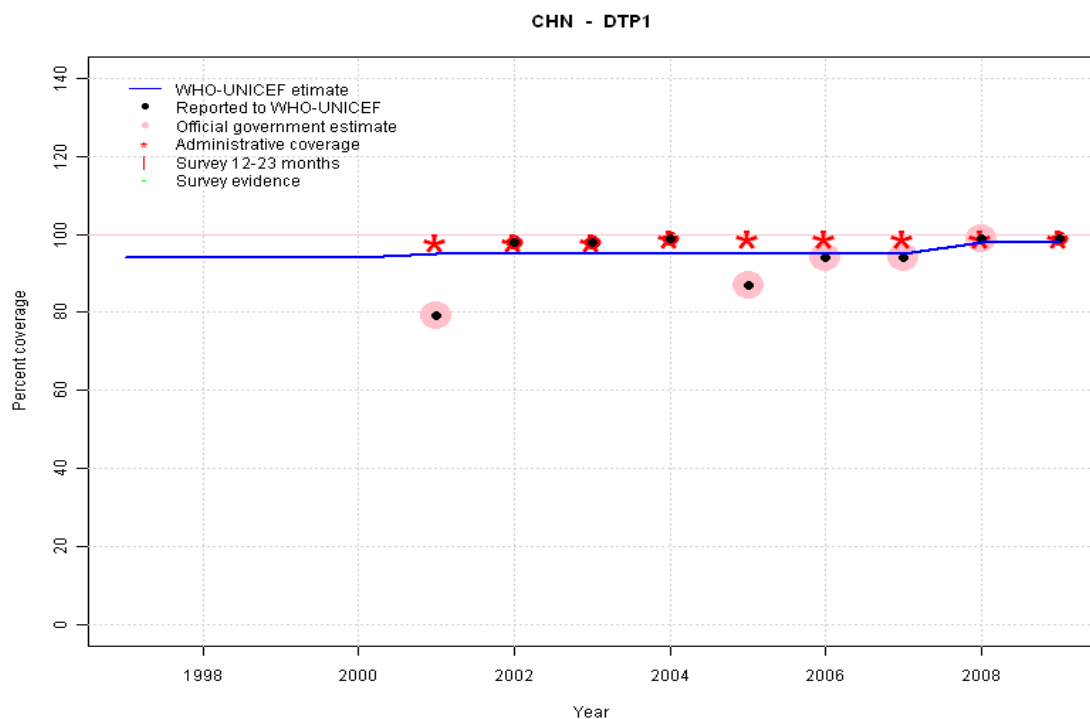
2006: Estimate based on reported data.

2007: Estimate based on reported data.

2008: Estimate based on reported data.

2009: Estimate based on trend in reported data. Missing or ignored reported value estimated by extrapolation from 2008 reported value of 97 percent. 2009 reported data (100 percent) ignored by working group. National report does not incorporate adjustment for missing data; estimate based on the 2008 value.

China - DTP1



	1997	1998	1999	2000	2001	2002	2003	2004	2005	2006	2007	2008	2009
Estimate	94	94	94	94	95	95	95	95	95	95	95	98	98
Reported	NA	NA	NA	NA	79	98	98	99	87	94	94	99	99
Official	NA	NA	NA	NA	79	NA	NA	NA	87	94	94	99	NA
Administrative	NA	NA	NA	NA	98	98	98	99	99	99	99	99	99
Survey	NA	NA	NA	NA	NA	NA	NA	NA	NA	NA	NA	NA	NA

Description:

1997: Legacy estimate.

1998: Estimate based on working group decision to interpolated between 1997 and 2005. Fluctuation in officially reported data reflects different methods of correction for missing data.

1999: Estimate based on working group decision to interpolated between 1997 and 2005. Fluctuation in officially reported data reflects different methods of correction for missing data.

2000: Estimate based on working group decision to interpolated between 1997 and 2005. Fluctuation in officially reported data reflects different methods of correction for missing data.

2001: Estimate based on working group decision to interpolated between 1997 and 2005. Fluctuation in officially reported data reflects different methods of correction for missing data.

2002: Estimate based on working group decision to interpolated between 1997 and 2005. Fluctuation in officially reported data reflects different methods of correction for missing data.

2003: Estimate based on working group decision to interpolated between 1997 and 2005. Fluctuation in officially reported data reflects different methods of correction for missing data.

2004: Estimate based on working group decision to interpolated between 1997 and 2005. Fluctuation in officially reported data reflects different methods of correction for missing data.

2005: Improved methodology incorporates adjustment for missing data.

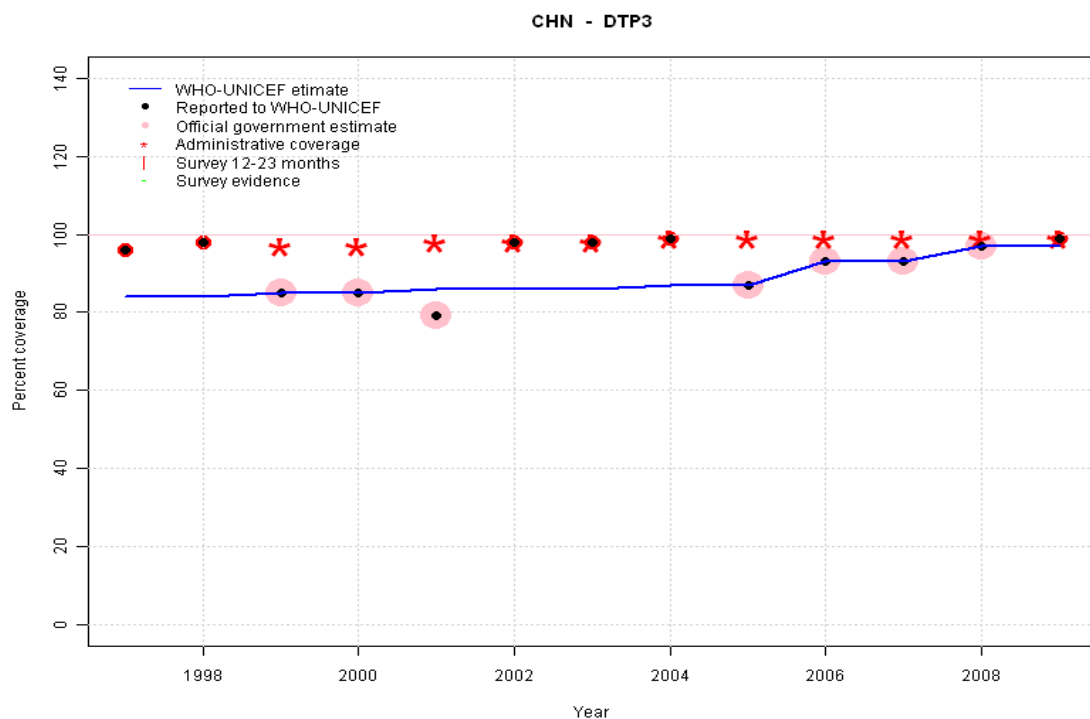
2006: Estimate extrapolated from 2005 level (95 percent).

2007: Estimate extrapolated from 2005 level (95 percent).

2008: Estimated DTP3 greater than estimated DTP1; DTP1 estimate based on the relationship between DTP1 and DTP3 from 282 surveys.

2009: Estimated DTP3 greater than estimated DTP1; DTP1 estimate based on the relationship between DTP1 and DTP3 from 282 surveys.

China - DTP3

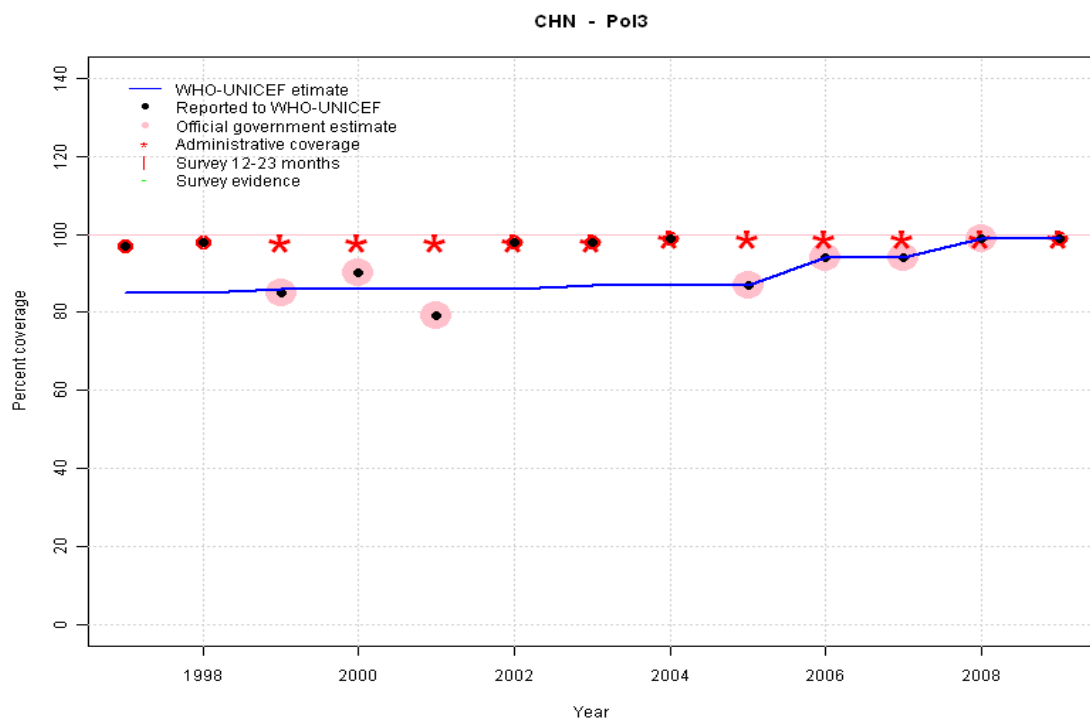


	1997	1998	1999	2000	2001	2002	2003	2004	2005	2006	2007	2008	2009
Estimate	84	84	85	85	86	86	86	87	87	93	93	97	97
Reported	96	98	85	85	79	98	98	99	87	93	93	97	99
Official	NA	NA	85	85	79	NA	NA	NA	87	93	93	97	NA
Administrative	NA	NA	97	97	98	98	98	99	99	99	99	99	99
Survey	NA	NA	NA	NA	NA	NA	NA	NA	NA	NA	NA	NA	NA

Description:

- 1997: Legacy estimate.
- 1998: Estimate based on working group decision to interpolated between 1997 and 2005. Fluctuation in officially reported data reflects different methods of correction for missing data.
- 1999: Estimate based on working group decision to interpolated between 1997 and 2005. Fluctuation in officially reported data reflects different methods of correction for missing data.
- 2000: Estimate based on working group decision to interpolated between 1997 and 2005. Fluctuation in officially reported data reflects different methods of correction for missing data.
- 2001: Estimate based on working group decision to interpolated between 1997 and 2005. Fluctuation in officially reported data reflects different methods of correction for missing data.
- 2002: Estimate based on working group decision to interpolated between 1997 and 2005. Fluctuation in officially reported data reflects different methods of correction for missing data.
- 2003: Estimate based on working group decision to interpolated between 1997 and 2005. Fluctuation in officially reported data reflects different methods of correction for missing data.
- 2004: Estimate based on working group decision to interpolated between 1997 and 2005. Fluctuation in officially reported data reflects different methods of correction for missing data.
- 2005: Improved methodology incorporates adjustment for missing data.
- 2006: Estimate based on reported data.
- 2007: Estimate based on reported data.
- 2008: Estimate based on reported data.
- 2009: Estimate based on trend in reported data. Missing or ignored reported value estimated by extrapolation from 2008 reported value of 97 percent. 2009 reported data (99 percent) ignored by working group. National report does not incorporate adjustment for missing data; estimate based on the 2008 value.

China - Pol3



	1997	1998	1999	2000	2001	2002	2003	2004	2005	2006	2007	2008	2009
Estimate	85	85	86	86	86	86	87	87	87	94	94	99	99
Reported	97	98	85	90	79	98	98	99	87	94	94	99	99
Official	NA	NA	85	90	79	NA	NA	NA	87	94	94	99	NA
Administrative	NA	NA	98	98	98	98	98	99	99	99	99	99	99
Survey	NA	NA	NA	NA	NA	NA	NA	NA	NA	NA	NA	NA	NA

Description:

1997: Legacy estimate.

1998: Estimate based on working group decision to interpolated between 1997 and 2005. Fluctuation in officially reported data reflects different methods of correction for missing data.

1999: Estimate based on working group decision to interpolated between 1997 and 2005. Fluctuation in officially reported data reflects different methods of correction for missing data.

2000: Estimate based on working group decision to interpolated between 1997 and 2005. Fluctuation in officially reported data reflects different methods of correction for missing data.

2001: Estimate based on working group decision to interpolated between 1997 and 2005. Fluctuation in officially reported data reflects different methods of correction for missing data. 2001 reported data (79 percent) inconsistent with data from other years.

2002: Estimate based on working group decision to interpolated between 1997 and 2005. Fluctuation in officially reported data reflects different methods of correction for missing data.

2003: Estimate based on working group decision to interpolated between 1997 and 2005. Fluctuation in officially reported data reflects different methods of correction for missing data.

2004: Estimate based on working group decision to interpolated between 1997 and 2005. Fluctuation in officially reported data reflects different methods of correction for missing data.

2005: Improved methodology incorporates adjustment for missing data.

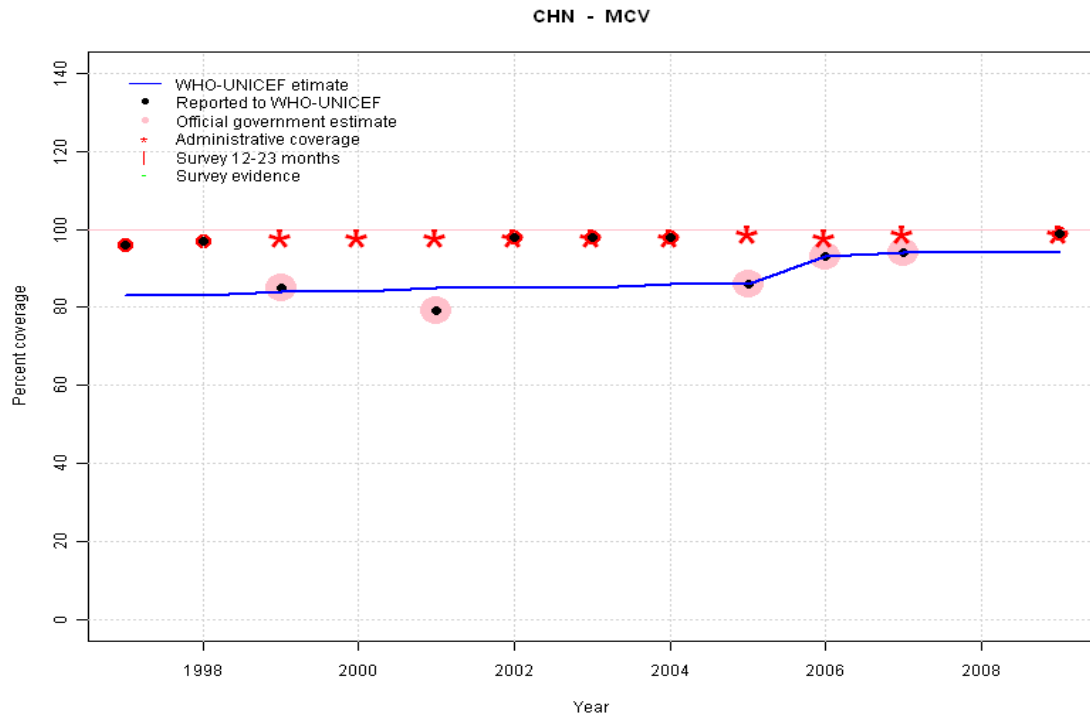
2006: Estimate based on reported data.

2007: Estimate based on reported data.

2008: Estimate based on reported data.

2009: Estimate based on trend in reported data. Missing or ignored reported value estimated by extrapolation from 2008 reported value of 99 percent. 2009 reported data (99 percent) ignored by working group. National report does not incorporate adjustment for missing data; estimate based on the 2008 value.

China - MCV



	1997	1998	1999	2000	2001	2002	2003	2004	2005	2006	2007	2008	2009
Estimate	83	83	84	84	85	85	85	86	86	93	94	94	94
Reported	96	97	85	NA	79	98	98	98	86	93	94	NA	99
Official	NA	NA	85	NA	79	NA	NA	NA	86	93	94	NA	NA
Administrative	NA	NA	98	98	98	98	98	98	99	98	99	NA	99
Survey	NA	NA	NA	NA	NA	NA	NA	NA	NA	NA	NA	NA	NA

Description:

1997: Legacy estimate.

1998: Estimate based on working group decision to interpolated between 1997 and 2005. Fluctuation in officially reported data reflects different methods of correction for missing data.

1999: Estimate based on working group decision to interpolated between 1997 and 2005. Fluctuation in officially reported data reflects different methods of correction for missing data.

2000: Estimate based on working group decision to interpolated between 1997 and 2005. Fluctuation in officially reported data reflects different methods of correction for missing data.

2001: Estimate based on working group decision to interpolated between 1997 and 2005. Fluctuation in officially reported data reflects different methods of correction for missing data.

2002: Estimate based on working group decision to interpolated between 1997 and 2005. Fluctuation in officially reported data reflects different methods of correction for missing data.

2003: Estimate based on working group decision to interpolated between 1997 and 2005. Fluctuation in officially reported data reflects different methods of correction for missing data.

2004: Estimate based on working group decision to interpolated between 1997 and 2005. Fluctuation in officially reported data reflects different methods of correction for missing data.

2005: Improved methodology incorporates adjustment for missing data.

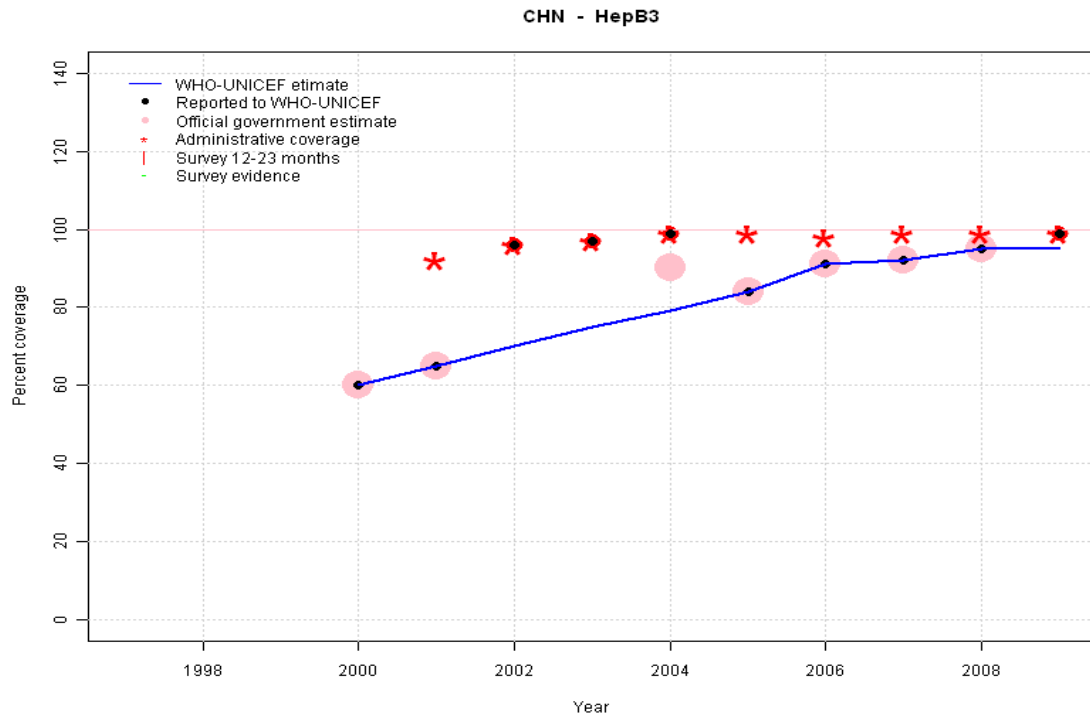
2006: Estimate based on reported data.

2007: Estimate based on reported data.

2008: Estimate based on trend in reported data. Missing or ignored reported value estimated by extrapolation from 2007 reported value of 94 percent.

2009: Estimate based on trend in reported data. Missing or ignored reported value estimated by extrapolation from 2007 reported value of 94 percent. 2009 reported data (99 percent) ignored by working group. National report does not incorporate adjustment for missing data; estimate based on the 2008 value.

China - HepB3

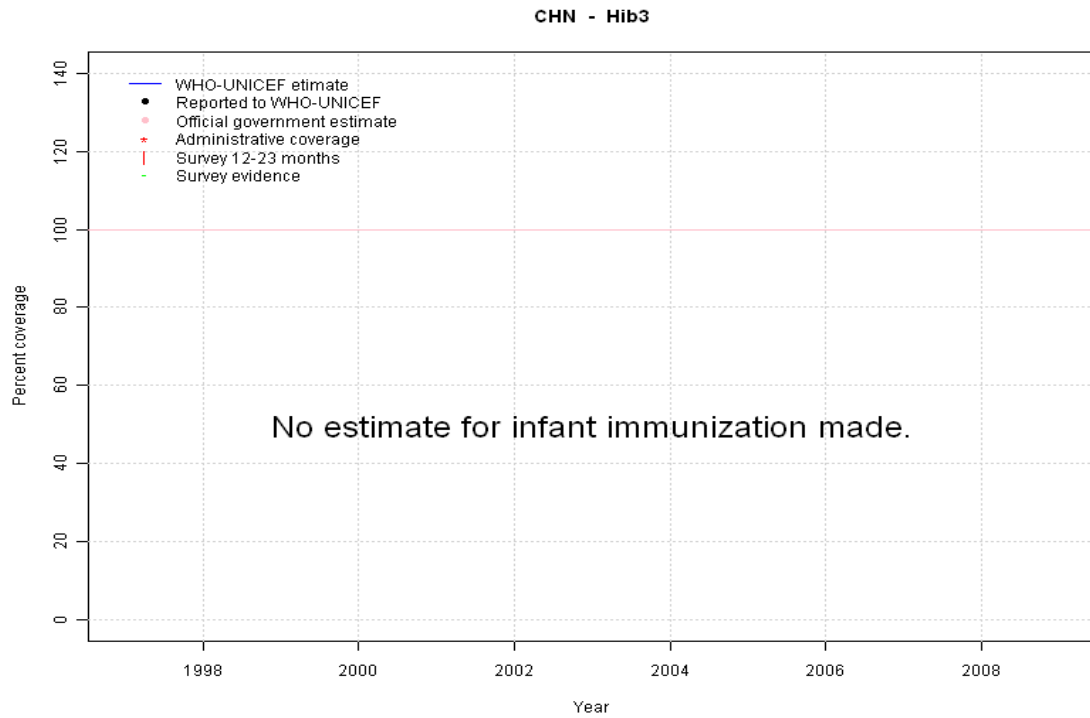


Description:

- 2000: Coverage represents sub-national introduction HepB nationally introduced in 2002 reporting started in 2000. Vaccine presentation is HepB .
- 2001: Coverage represents sub-national introduction
- 2002: Estimate based on working group decision to interpolated between 2001 and 2005. Fluctuation in officially reported data reflects different methods of correction for missing data.
- 2003: Estimate based on working group decision to interpolated between 2001 and 2005. Fluctuation in officially reported data reflects different methods of correction for missing data.
- 2004: Estimate based on working group decision to interpolated between 2001 and 2005. Fluctuation in officially reported data reflects different methods of correction for missing data.
- 2005: Improved methodology incorporates adjustment for missing data.
- 2006: Estimate based on reported data.
- 2007: Estimate based on reported data.
- 2008: Estimate based on reported data.
- 2009: Estimate based on trend in reported data. Missing or ignored reported value estimated by extrapolation from 2008 reported value of 95 percent. 2009 reported data (99 percent) ignored by working group. National report does not incorporate adjustment for missing data; estimate based on the 2008 value.

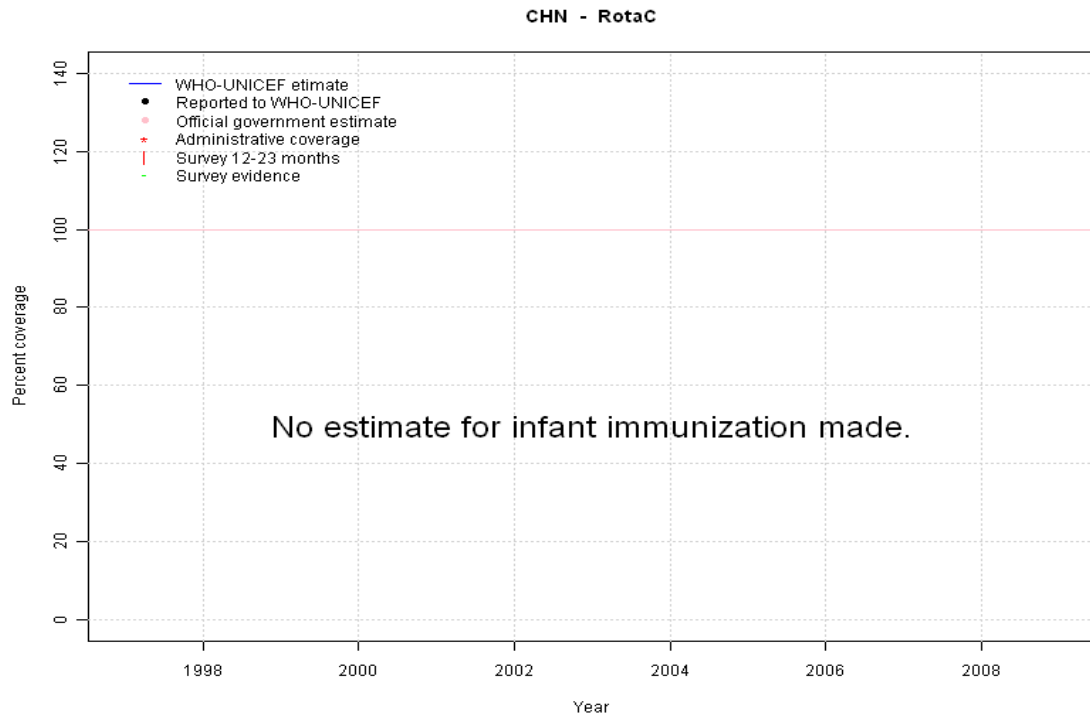
	1997	1998	1999	2000	2001	2002	2003	2004	2005	2006	2007	2008	2009
Estimate	NA	NA	NA	60	65	70	75	79	84	91	92	95	95
Reported	NA	NA	NA	60	65	96	97	99	84	91	92	95	99
Official	NA	NA	NA	60	65	NA	NA	90	84	91	92	95	NA
Administrative	NA	NA	NA	NA	92	96	97	99	99	98	99	99	99
Survey	NA	NA	NA	NA	NA	NA	NA	NA	NA	NA	NA	NA	NA

China - Hib3



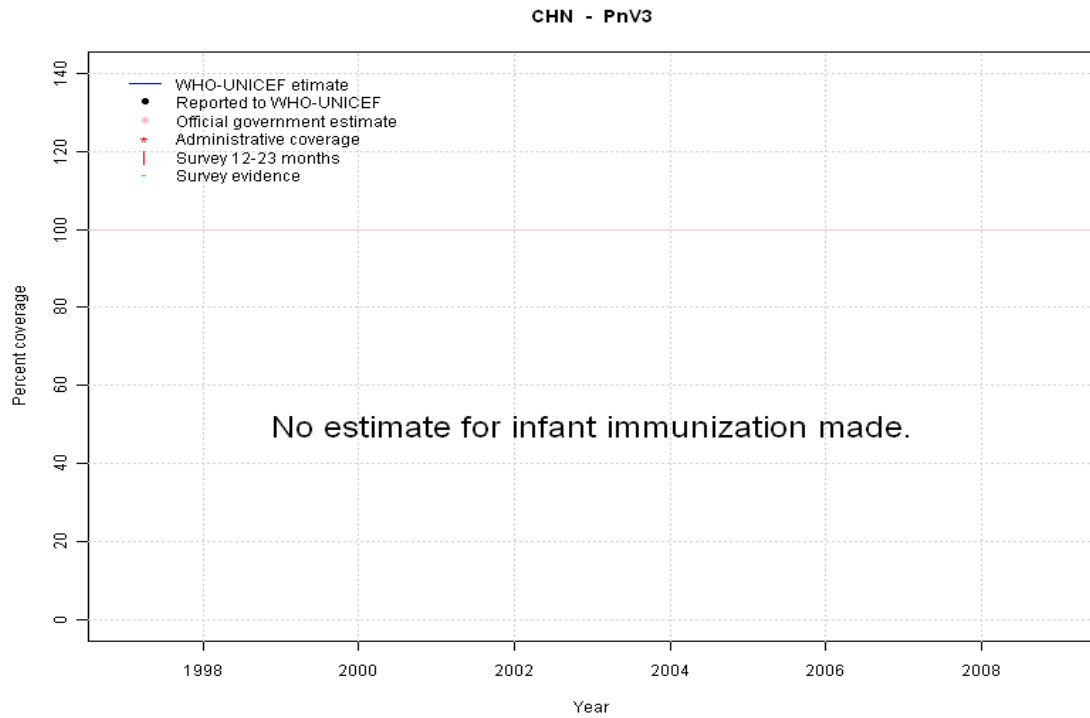
	1997	1998	1999	2000	2001	2002	2003	2004	2005	2006	2007	2008	2009
Estimate	NA	NA	NA	NA	NA	NA	NA	NA	NA	NA	NA	NA	NA
Reported	NA	NA	NA	NA	NA	NA	NA	NA	NA	NA	NA	NA	NA
Official	NA	NA	NA	NA	NA	NA	NA	NA	NA	NA	NA	NA	NA
Administrative	NA	NA	NA	NA	NA	NA	NA	NA	NA	NA	NA	NA	NA
Survey	NA	NA	NA	NA	NA	NA	NA	NA	NA	NA	NA	NA	NA

China - RotaC



	1997	1998	1999	2000	2001	2002	2003	2004	2005	2006	2007	2008	2009
Estimate	NA	NA	NA	NA	NA	NA	NA	NA	NA	NA	NA	NA	NA
Reported	NA	NA	NA	NA	NA	NA	NA	NA	NA	NA	NA	NA	NA
Official	NA	NA	NA	NA	NA	NA	NA	NA	NA	NA	NA	NA	NA
Administrative	NA	NA	NA	NA	NA	NA	NA	NA	NA	NA	NA	NA	NA
Survey	NA	NA	NA	NA	NA	NA	NA	NA	NA	NA	NA	NA	NA

China - PnV3



	1997	1998	1999	2000	2001	2002	2003	2004	2005	2006	2007	2008	2009
Estimate	NA	NA	NA	NA	NA	NA	NA	NA	NA	NA	NA	NA	NA
Reported	NA	NA	NA	NA	NA	NA	NA	NA	NA	NA	NA	NA	NA
Official	NA	NA	NA	NA	NA	NA	NA	NA	NA	NA	NA	NA	NA
Administrative	NA	NA	NA	NA	NA	NA	NA	NA	NA	NA	NA	NA	NA
Survey	NA	NA	NA	NA	NA	NA	NA	NA	NA	NA	NA	NA	NA

China - survey details

2004 2004????????????

Vaccine	Confirmation method	Coverage	Age cohort	Sample	Cards seen
BCG	Card <12 months	98	12-23 m	155954	96
BCG	Card	98	12-23 m	155954	96
DTP3	Card	93	12-23 m	155954	96
DTP3	Card <12 months	93	12-23 m	155954	96

HepB3	Card <12 months	90	12-23 m	171188	96
HepB3	Card	85	12-23 m	171188	96
MCV	Card <12 months	93	12-23 m	155954	96
MCV	Card	93	12-23 m	155954	96
Pol3	Card <12 months	94	12-23 m	155954	96
Pol3	Card	94	12-23 m	155954	96

Further information and estimates for 1980-1996 are available at:

http://www.childinfo.org/immunization_countryreports.html

http://www.who.int/immunization_monitoring/routine/immunization_coverage/en/index4.html