

Children and AIDS fact sheet: Dominican Republic

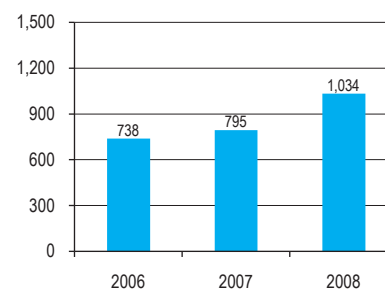
Estimated adult HIV prevalence rate 1.1%

Source: UNAIDS, 2008

PREVENT MOTHER-TO-CHILD TRANSMISSION OF HIV

Antenatal care coverage	99%
Source: DHS, 2007	
Estimated number of births per year	224,000
Source: UN Population Division, 2008	
Estimated number of HIV+ pregnant women	1,900
Source: UNAIDS/WHO, 2009	
Number and % of HIV+ pregnant women receiving ARVs for PMTCT	1,034
Source: MOH, 2008	
	[<1,000 – 2,800]*
	[37% – >95%]*

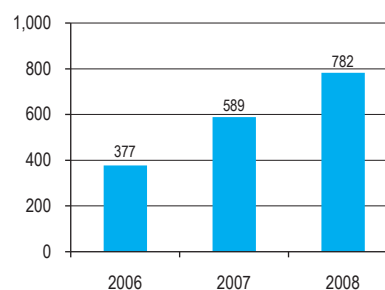
Number of HIV+ pregnant women receiving ARVs for PMTCT



PROVIDE PAEDIATRIC HIV TREATMENT

Estimated number of children living with HIV	2,700
Source: UNAIDS, 2008	
Number and % of infants born to HIV+ women receiving cotrimoxazole prophylaxis within 2 months of birth	–
Number and % of infants born to HIV+ women receiving a virological test for HIV diagnosis within 2 months of birth	391 21%
Source: MOH, 2008	
Estimated number of children in need of ART	–
Number and % of children in need receiving ART	782
Source: MOH, 2008	

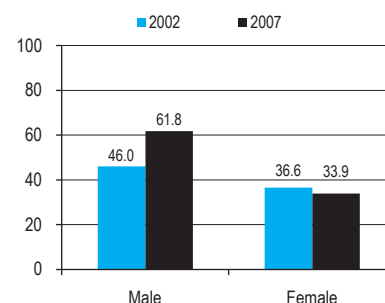
Number of children in need receiving ART



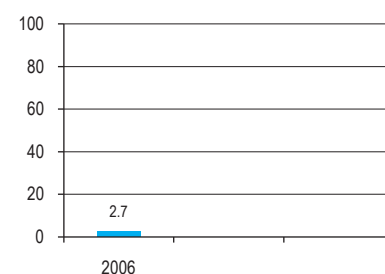
PREVENT INFECTION AMONG ADOLESCENTS AND YOUNG PEOPLE

Estimated HIV prevalence among young people aged 15–24	M: 0.3%	F: 0.6%
Source: UNAIDS, 2008		
HIV prevalence among most-at-risk populations	FSW: 2.7%	IDU: –
Source: UNAIDS, 2008		
Knowledge of HIV prevention among young people aged 15–24	M: 33.7%	F: 40.8%
Source: DHS, 2007		
Sex before age 15 among young people aged 15–19	M: 21.1%	F: 14.0%
Source: DHS, 2007		
% of young people aged 15–24 who had sex with more than one partner in the last 12 months	M: 23.0%	F: 4.5%
Source: DHS, 2007		
Condom use at last sex among young people aged 15–24 with multiple partners	M: 61.8%	F: 33.9%
Source: DHS, 2007		
% of sex workers who used a condom with their most recent client	M: –	F: –
% of IDUs who used sterile equipment at last injection		–
% of men who used a condom the last time they had sex with a male partner		79%
Source: UNAIDS, 2008		

% of young people aged 15–24 with multiple partners and who used a condom at last sex



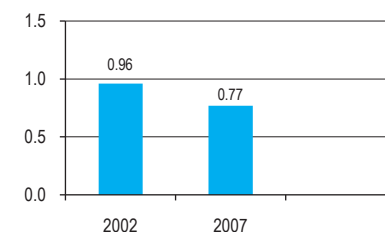
HIV prevalence among female sex workers (%)



PROTECT AND SUPPORT CHILDREN AFFECTED BY HIV AND AIDS

Estimated number of children orphaned by all causes	170,000
Source: UNAIDS, 2008	
Estimated number of children orphaned by AIDS	–
Estimated number of double orphans by all causes	6,600
Source: UNAIDS, 2008	
Orphan school attendance ratio	0.77
Source: DHS, 2007	
% of orphans receiving external support	–

Orphan school attendance ratio



M/F = male/female; FSW = female sex workers; IDU = injecting drug users. Dash (–) means data not available.
* Represents the uncertainty range around the estimates.