



**WHO / UNICEF**

**Joint Monitoring Programme  
for Water Supply and Sanitation**

Estimates for the use of

**Improved  
Drinking-Water Sources**

Updated March 2010

---

**Cuba**

---



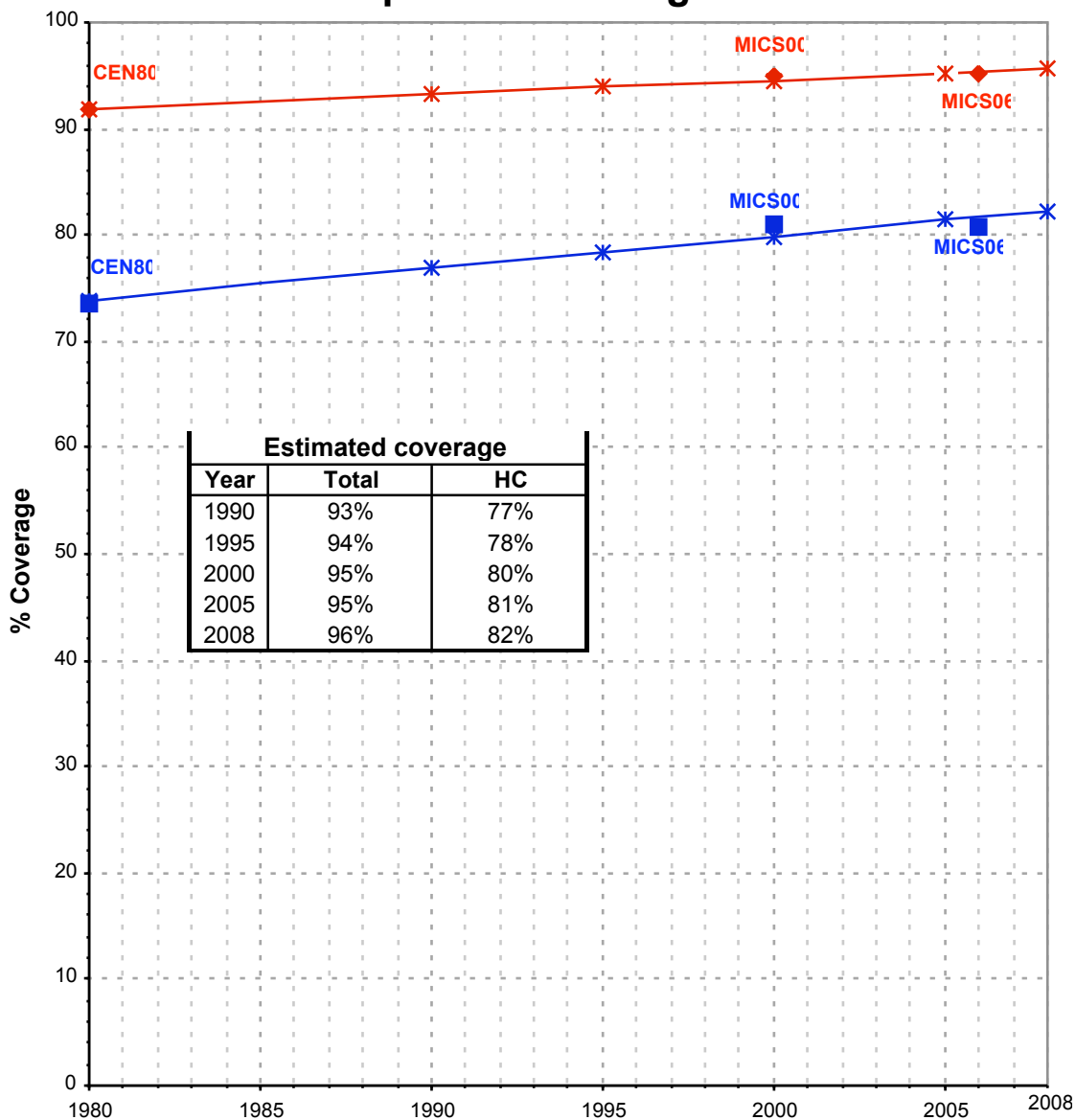
Access to drinking water sources		JMP99			Cuba			Access to drinking water sources		MICS00			Cuba						
Global Water Supply and Sanitation Assessment 2000.					Demographic and Health Survey														
Water Supply and Sanitation Sector Questionnaire - 1999. Form 6 sent to WHO.					1998					Informe preliminar					2000				
Original denomination	Classification	Urban	Rural	Total	Original denomination	Classification	Urban	Rural	Total	Original denomination	Classification	Urban	Rural	Total					
Population served with household connection.	<b>Tap water</b>	83.8	41.3			<b>Tap water</b>	83.1	47.2	73.9		<b>Tap water</b>	81.1	45.9	72.1					
	House connections					House connections					House connections								
	Piped water into dwelling					Tubería hasta vivienda					Piped water into dwelling	73.2	29.6	62.1					
	Piped water to yard/plot					Tubería hasta patio o lote					Piped water to yard/plot	7.9	16.3	10.0					
	Public tap, standpipe					Grifo público					Public tap, standpipe	2.0	1.3	1.8					
	Other										Other								
Population without household connection but with reasonable access to a public.	<b>Ground water</b>	14.8	40.7			<b>Ground water</b>	12.4	43.3	20.4		<b>Ground water</b>	11.6	29.8	16.3					
	Protected ground water	14.8	40.7			Protected ground water	11.6	29.8	16.3		Protected ground water	11.6	29.8	16.3					
	Unprotected ground water					Unprotected ground water	0.8	13.5	4.1		Unprotected ground water	0.8	13.5	4.1					
	Protected wells or springs					Pozo o manantial protegido					Protected wells or springs	3.4	11.9	5.6					
	Private										Private								
	Public										Public								
	Other										Other								
	Unprotected wells or springs					Pozo o manantial sin proteger					Unprotected wells or springs	0.8	13.5	4.1					
	Private										Private								
	Public										Public								
	Other										Other								
	<b>All wells</b>										<b>All wells</b>	8.2	17.9	10.7					
	Private										Private								
	Public										Public								
	Other										Other								
	Tubewell, borehole					Pozo con tubería/ con bomba					Tubewell, borehole	8.2	17.9	10.7					
	Private										Private								
	Public										Public								
	Other										Other								
	<b>Traditional wells</b>										<b>Traditional wells</b>								
	Private										Private								
	Public										Public								
	Other										Other								
	Protected well										Protected well								
	Private										Private								
	Public										Public								
	Other										Other								
	Unprotected well										Unprotected well								
	Private										Private								
	Public										Public								
	Other										Other								
	<b>All springs</b>										<b>All springs</b>								
	Private										Private								
	Public										Public								
	Other										Other								
	Protected spring										Protected spring								
	Private										Private								
	Public										Public								
	Other										Other								
	Unprotected spring										Unprotected spring								
	Private										Private								
	Public										Public								
	Other										Other								
	<b>Rainwater</b>					<b>Rainwater</b>	0.2	0.7	0.3		<b>Rainwater</b>	0.2	0.7	0.3					
	Covered cistern/tank					Recolección de agua lluvia					Covered cistern/tank	0.2	0.7	0.3					
	Uncovered cistern/tank										Uncovered cistern/tank								
	<b>Bottled water</b>					<b>Bottled water</b>	0.3	0.2	0.3		<b>Bottled water</b>	0.3	0.2	0.3					
	with other improved					Agua embotellada					with other improved								
	without other improved					Charca/estanque, río o arroyo					without other improved	0.3	0.2	0.3					
	<b>Surface water</b>					<b>Surface water</b>	0.2	2.1	0.7		<b>Surface water</b>	0.2	2.1	0.7					
	River										River								
	Lake										Lake								
	Dam										Dam								
	Pond										Pond								
	Stream										Stream								
	Irrigation channel										Irrigation channel								
	Other										Other								
	<b>Other improved sources</b>					<b>Other improved sources</b>					<b>Other improved sources</b>								
	Other										Other								
	Other										Other								
Total population unserved	<b>Other non-improved</b>	1.3	18.0			<b>Other non-improved</b>	3.7	6.5	4.4		<b>Other non-improved</b>	3.7	6.5	4.4					
	Cart with small tank/drum					Cart with small tank/drum					Cart with small tank/drum								
	Tanker truck provided					Camiontanque, vendedor					Tanker truck provided	3.4	6.1	4.1					
	Other					Otra					Other	0.3	0.4	0.3					
	Other										Other								
	<b>DK/missing</b>					<b>DK/missing</b>					<b>DK/missing</b>								
	<b>Total</b>	100.0	100.0			<b>Total</b>	99.9	100.0	100.0		<b>Total</b>	99.9	100.0	100.0					
<b>Calculations</b>						<b>Calculations</b>													
<b>Estimations</b>						<b>Estimations</b>													
<b>Access to improved drinking water sources :</b>		99%	82%		<b>Access to improved drinking water sources :</b>		95%	78%	91%	<b>Access to improved drinking water sources :</b>		81%	46%	72%					
<b>Access to house connections :</b>		84%	41%		<b>Access to house connections :</b>		81%	46%	72%	<b>Access to house connections :</b>		81%	46%	72%					
Used for the estimates :		No	No		Used for the estimates :		Yes	Yes		Used for the estimates :		Yes	Yes						
Used for the estimates :		No	No		Used for the estimates :		Yes	Yes		Used for the estimates :		Yes	Yes						
<b>Ratios</b>	HC / Tap water	100%	100%		<b>Ratios</b>	HC / Tap water	98%	97%		<b>Ratios</b>	HC / Tap water	98%	97%						
	Public tap / Tap water					Public tap / Tap water	2%	3%			Public tap / Tap water	2%	3%						
	Tubewell + protected well / All wells					Tubewell + protected well / All wells					Tubewell + protected well / All wells								
	Protected wells / Traditional wells					Protected wells / Traditional wells					Protected wells / Traditional wells								
	Tubewell / All wells					Tubewell / All wells	100%	100%			Tubewell / All wells	100%	100%						
	Protected springs / All springs					Protected springs / All springs					Protected springs / All springs								
	Protect. well & spring / well & spring					Protect. well & spring / well & spring	94%	69%			Protect. well & spring / well & spring	94%	69%						
Number of people covered by the survey					Number of people covered by the survey					Number of people covered by the survey									
Number of households covered by the survey					Number of households covered by the survey					Number of households covered by the survey									
Total population:		8342.7	2575.7		Total population:					Total population:									
<b>Comments</b>					<b>Comments</b>					<b>Comments</b>									

Access to drinking water sources		WHO01			Cuba			Access to drinking water sources		INRH07			Cuba		
Revision of world health statistics					Instituto Nacional de Recurso Hidraulicos					World health report, WHO 2003					
					2001								2007		
Original denomination	Classification	Urban	Rural	Total	Original denomination	Classification	Urban	Rural	Total						
x	<b>Tap water</b>	85.0	42.0			<b>Tap water</b>	88.2	41.2							
	House connections	85.0	42.0		Conexion domiciliaria	House connections									
	Piped water into dwelling					Piped water into dwelling									
	Piped water to yard/plot					Piped water to yard/plot									
	Public tap, standpipe					Public tap, standpipe									
	Other					Other									
	<b>Ground water</b>					Facil acceso	<b>Ground water</b>	7.8	35.5						
	Protected ground water						Protected ground water								
	Unprotected ground water						Unprotected ground water								
	Protected wells or springs						Protected wells or springs								
	Private						Private								
	Public						Public								
	Other						Other								
	Unprotected wells or springs						Unprotected wells or springs								
	Private						Private								
	Public						Public								
	Other						Other								
	<b>All wells</b>						<b>All wells</b>								
	Private						Private								
	Public						Public								
	Other						Other								
	Tubewell, borehole						Tubewell, borehole								
	Private						Private								
	Public						Public								
	Other						Other								
	<b>Traditional wells</b>						<b>Traditional wells</b>								
	Private						Private								
	Public						Public								
	Other						Other								
	Protected well						Protected well								
	Private						Private								
	Public						Public								
	Other						Other								
	Unprotected well						Unprotected well								
	Private						Private								
	Public						Public								
	Other						Other								
	<b>All springs</b>						<b>All springs</b>								
	Private						Private								
	Public						Public								
	Other						Other								
	Protected spring						Protected spring								
	Private						Private								
	Public						Public								
	Other						Other								
	Unprotected spring						Unprotected spring								
	Private						Private								
	Public						Public								
	Other						Other								
	<b>Rainwater</b>						<b>Rainwater</b>								
Covered cistern/tank						Covered cistern/tank									
Uncovered cistern/tank						Uncovered cistern/tank									
<b>Bottled water</b>						<b>Bottled water</b>									
with other improved						with other improved									
without other improved						without other improved									
<b>Surface water</b>						<b>Surface water</b>									
River						River									
Lake						Lake									
Dam						Dam									
Pond						Pond									
Stream						Stream									
Irrigation channel						Irrigation channel									
Other						Other									
<b>Other improved sources</b>						<b>Other improved sources</b>									
Other						Other									
Other						Other									
<b>Other non-improved</b>						<b>Other non-improved</b>	2.9	10.8							
Cart with small tank/drum						Cart with small tank/drum									
Tanker truck provided					Servicio publico	Tanker truck provided	2.9	10.8							
Other						Other									
Other						Other									
<b>DK/missing</b>						<b>DK/missing</b>									
<b>Total</b>		85.0	42.0			<b>Total</b>	98.9	87.5							
<b>Calculations</b>						<b>Calculations</b>									
<b>Estimations</b>						<b>Estimations</b>									
						Improved groundwater, based on MICS00	7.3	24.4							
<b>Access to improved drinking water sources : 85% 42%</b>					<b>Access to improved drinking water sources : 95% 66%</b>										
<b>Access to house connections : 85% 42%</b>					<b>Access to house connections : 88% 41%</b>										
Used for the estimates : No No					Used for the estimates : No No										
Used for the estimates : No No					Used for the estimates : No No										
<b>Ratios</b>	HC / Tap water	100%	100%			HC / Tap water	100%	100%							
	Public tap / Tap water					Public tap / Tap water									
	Tubewell + protected well / All wells					Tubewell + protected well / All wells									
	Protected wells / Traditional wells					Protected wells / Traditional wells									
	Tubewell / All wells					Tubewell / All wells									
	Protected springs / All springs					Protected springs / All springs									
	Protect. well & spring / well & spring					Protect. well & spring / well & spring									
Number of people covered by the survey					Number of people covered by the survey										
Number of households covered by the survey					Number of households covered by the survey										
Total population					Total population										
<b>Comments</b>					<b>Comments</b>										

Access to drinking water sources		MICS06		Cuba	
Multiple Indicator Cluster Survey				2006	
Original denomination	Classification	Urban	Rural	Total	
<b>Tap water</b>		82.6	61.2	74.7	
<b>House connections</b>		80.6	49.8	73.0	
Tuberai al hogar	Piped water into dwelling	70.8	30.3	60.6	
Tuberia en el patio/parcela	Piped water to yard/plot	10.0	19.5	12.4	
Llave publica	Public tap, standpipe	1.8	1.4	1.7	
	Other				
<b>Ground water</b>		13.3	39.5	19.9	
	Protected ground water	12.3	30.1	16.8	
	Unprotected ground water	1.0	9.4	3.1	
	Protected wells or springs	12.3	30.1	16.8	
	Private				
	Public	7.0	20.0	10.3	
	Other	0.1	0.1	0.1	
	Unprotected wells or springs	1.0	9.4	3.1	
	Private				
	Public	1.0	7.8	2.7	
	Other	0.0	1.6	0.4	
	<b>All wells</b>	8.1	29.5	13.5	
	Private				
	Public	8.0	27.8	13.0	
	Other	0.1	1.7	0.5	
	Tubewell, borehole				
	Private				
	Public				
	Other				
	<b>Traditional wells</b>	8.1	29.5	13.5	
	Private				
	Public	8.0	27.8	13.0	
	Other	0.1	1.7	0.5	
	Protected well	7.1	20.1	10.4	
	Private				
	Public	7.0	20.0	10.3	
	Other	0.1	0.1	0.1	
Pozo protegido	Unprotected well	1.0	9.4	3.1	
Arroyo protegido	Private				
	Public	1.0	7.8	2.7	
	Other	0.0	1.6	0.4	
Pozo sin protego	<b>All springs</b>	5.2	10.0	6.4	
Arroyo sin protego	Private				
	Public				
	Other				
Manantial/Noria	Protected spring	5.2	10.0	6.4	
	Private				
	Public				
	Other				
	Unprotected spring				
	Private				
	Public				
	Other				
	<b>Rainwater</b>	0.0	0.1	0.1	
Collection the agua lluvia	Covered cistern/tank	0.0	0.1	0.1	
	Uncovered cistern/tank				
	<b>Bottled water</b>	0.2	0.0	0.1	
Agua embasada	with other improved	0.2	0.0	0.1	
Agua embasada	without other improved	0.0	0.0	0.0	
Agua de superficie	<b>Surface water</b>	0.2	2.0	0.7	
	River				
	Lake				
	Dam				
	Pond				
	Stream				
	Irrigation channel				
	Other				
	<b>Other improved sources</b>				
	Other				
	Other				
	<b>Other non-improved</b>	3.8	6.9	4.6	
Carro con sifon	Cart with small tank/drum	0.6	1.7	0.9	
Camion	Tanker truck provided	2.7	4.9	3.3	
Otro	Other	0.5	0.3	0.4	
	Other				
	<b>DK/missing</b>				
	<b>Total</b>	100.1	99.7	100.1	
<b>Calculations</b>					
<b>Estimations</b>					
<b>Access to improved drinking water sources :</b>		<b>95%</b>	<b>81%</b>	<b>92%</b>	
<b>Access to house connections :</b>		<b>81%</b>	<b>50%</b>	<b>73%</b>	
Used for the estimates		Yes	Yes		
Used for the estimates		Yes	Yes		
<b>Ratios</b>	HC / Tap water	98%	97%		
	Public tap / Tap water	2%	3%		
	Tubewell + protected well / All wells				
	Protected wells / Traditional wells	88%	68%		
	Tubewell / All wells				
	Protected springs / All springs	100%	100%		
	Protect. well & spring / well & spring	92%	76%		
Number of people covered by the survey					
Number of households covered by the survey					
Total population					
<b>Comments</b>					

Cuba			DRINKING WATER							
			URBAN				RURAL			
			House connection		Total		House connection		Total	
Source	Code	Year	Used	Not used	Used	Not used	Used	Not used	Used	Not used
National Census	CEN80	1980	73.6		91.7		15.8		31.9	
The International Drinking Water Supply and Sanitation Decade	WHO90	1990								
Global Water Supply and Sanitation Assessment 2000.	JMP99	1998		83.8		98.7		41.3		82.0
Demographic and Health Survey	MICS00	2000	81.1		94.9		45.9		77.7	
Revision of world health statistics	WHO01	2001		85.0				42.0		
Instituto Nacional de Recurso Hidraulicos	INRH07	2007		88.2		95.5		41.2		65.6
Multiple Indicator Cluster Survey	MICS06	2006	80.8		95.1		49.8		81.4	

# Cuba - urban - Use of improved drinking water sources



Total improved access

Household connections (HC)

◆ Used for the estimates   
 ■ Used for the estimates   
 ✱ Estimates   
 ✱ Estimates

# Cuba - rural - Use of improved drinking water sources

