



WHO / UNICEF

**Joint Monitoring Programme
for Water Supply and Sanitation**

Coverage Estimates
Improved Sanitation

Updated in July 2008

Colombia

Urban and Rural Sanit

Survey

DHS		1990	
SANITATION	Urban	Rural	
Inodoro-alcantarillado	89.3	16.9	
Inodoro-pozo septico	5.0	33.3	
Letrina	2.5	9.1	
No tiene sanitario	2.8	36.2	
Otro	0.4	4.5	
TOTAL	100.0	100.0	
50% of letrina considered improved	0.0	0.0	
% Use of an improved sanitation facility	94%	50%	
% Sewerage connections	89%	17%	

Open defecation 3% 36%

Source: Encuesta de Prevalencia, Demografía y Salud, 1990

DHS		1995	
SANITATION	Urban	Rural	
Inodoro (alcantarilla)	90.0	13.3	
Inodoro (pozo septico)	4.8	22.6	
Inodoro a otros	1.0	10.2	
Letrina	1.5	10.7	
No tiene sanitario	2.5	41.4	
Otro/ no sabe	0.1	1.7	
TOTAL	99.9	99.9	
50% of letrina considered improved	0.8	5.4	
% Use of an improved sanitation facility	96%	41%	
% Sewerage connections	90%	13%	

Open defecation 3% 41%

Source: Colombia Demographic & Health Survey 1995

RPAHO		1997	
ENCV			
SANITATION	Urban	Rural	
Inodoro a alcantarillado	87.6	30.1	
Inodoro a tanque septico	7.2	27.6	
Inodoro sin connexion	1.6	10.2	
Letrina o bajar a {low tide?}	1.8	9.0	
No tiene	1.7	23.1	
TOTAL	99.9	100.0	
50% of letrina considered improved	0.9	4.5	
% Use of an improved sanitation facility	96%	62%	
% Sewerage connections	88%	30%	

Open defecation 2% 23%

Source: Desigualdades en el acceso, uso y gasto con el agua potable en America Latina y el Caribe, Colombia, PAHO, Feb 2001, using data of ENCV 1997

DHS		2000	
SANITATION	Urban	Rural	
Inodoro a alcantarillado	90.7	14.3	
Inodoro a pozo septico	4.2	32.6	
quebrada, campo abierto	1.3	11.3	
Letrina (pozo negro, hoyo)	2.4	13.0	
No tiene servicio sa	1.4	28.7	
TOTAL	100.0	99.9	
considered improved	1.2	6.5	
% Use of an improved sanitation facility	96%	53%	
% Sewerage conne	91%	14%	

Open defecation 1% 29%

Source: Salud sexual y reproductiva en Colombia, Encuesta Nacional de Demografía y Salud, 2000

Sanitation - Colombia

DHS		2005	
Proportion shared improved facilities/all improved facilities		0.13	0.11
SANITATION	Urban	Rural	
Inodoro a alcantarillado	92.0	25.3	
Inodoro a pozo septico	4.9	37.9	
Inodoro sin connexion	0.9	6.3	
Letrina (pozo negro, hoyo)	0.4	5.0	
Bajamar	0.5	2.4	
No tiene servicio sanitario	1.1	22.7	
Otro	0.0	0.3	
TOTAL	99.8	99.9	
50% of letrina considered improved	0.2	2.5	
% Use of an improved sanitation facility	97%	66%	
% Sewerage connections	92%	25%	
Open defecation	1%	23%	

Source: Encuesta Nacional de Demografía y Salud, 2005

Census		1993	
SANITATION	Urban	Rural	
Private flush to sewer	66.8	11.5	
Private flush to septic tank	7.5	21.7	
Shared flush to sewer	11.8	0.8	
Shared flush to septic tank	1.3	1.5	
Private latrine	4.6	13.8	
Shared latrine	1.1	0.9	
Bajamar [expelled to ditch or stream]	1.5	3.1	
Doesn't have	5.3	46.8	
TOTAL	100.0	100.0	
50% of Pit considered Improved	2.9	7.3	
% Use of an improved sanitation facility	90%	43%	
% Sewerage connections	67%	11%	
Open defecation	7%	50%	

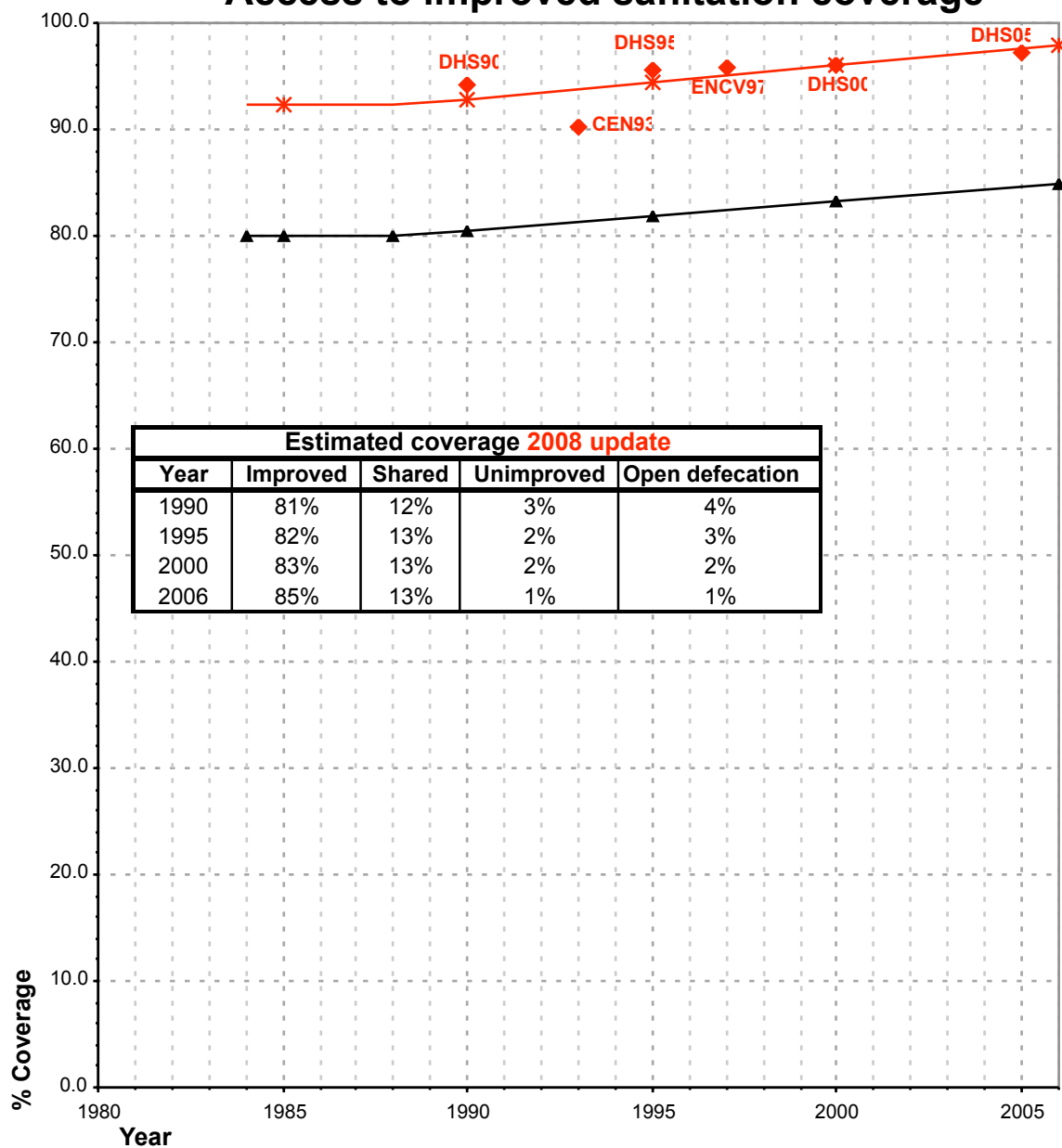
Source: Colombia census 1993 (10% micro dataset from IPUMS).

Estimate		
FORM6/WHO		1999
(Population in thousands)		
SANITATION	Urban	Rural
Population served with household connections to conventional sewers	18494	2393
Population without household connections but served with adequate, private or shared on-site system		
Total population served	18494	2393
Total population unserved	9568	9560
Total population	28062	11953
% Use of an improved sanitation facility	66%	20%
% Sewerage connections	66%	20%
Open defecation		

Source: Global Water Supply and Sanitation Assessment 2000. Water Supply and Sanitation Sector Questionnaire - 1999 (Form 6 -sent to WHO)

Colombia			SANITATION											
			URBAN				RURAL				OPEN DEFECATION			
			HC		Total		HC		Total		Urban		Rural	
Source	Code	Year	Used for estimates	Not used for estimates	Used for estimates	Not used for estimates	Used for estimates	Not used for estimates	Used for estimates	Not used for estimates	Used for estimates	Not used for estimates	Used for estimates	Not used for estimates
The International Drinking Water Supply and Sanitation Decade. Review of National Baseline Data (as at December 1980). WHO 1984	WHO80	1980		61.0		100.0					4.0			
The International Drinking Water Supply and Sanitation Decade. Review of National Progress (as at December 1983). WHO 1986.	WHO83	1983		62.0		96.0					13.0			
The International Drinking Water Supply and Sanitation Decade. Review of Mid-Decade Progress (as at December 1985). WHO 1987.	WHO85	1985		55.0							12.0			
The International Drinking Water Supply and Sanitation Decade. Review of National Progress (as at December 1988). WHO 1990.	WHO88	1988		54.0		85.0					18.0			
The International Drinking Water Supply and Sanitation Decade. End of Decade Review (as at December 1990). WHO1992.	WHO90	1990		51.0		84.0					18.0			
Encuesta de Prevalencia, Demografia y Salud, 1990	DHS90	1990	89.3		94.3		16.9		50.2		2.8		36.2	
Water Supply and Sanitation Sector Monitoring Report 1993 (Sector Status as of 31 December 1991)	JMP93	1991												
Water Supply and Sanitation Sector Monitoring Report - 1996. Sector Status as of 31 December 1994. WHO/UNICEF 1996.	JMP96	1993				76.0					33.0			
Colombia Demographic & Health Survey, 1995.	DHS95	1995	90.0		95.6		13.3		41.3		2.5		41.4	
Desigualdades en el acceso, uso y gasto con el agua potable en America Latina y el Caribe, Colombia, PAHO, Feb 2001, using data of ENCV 1997	ENCV97	1997	87.6		95.8		30.1		62.2		1.7		23.1	
Global Water Supply and Sanitation Assessment 2000. Water Supply and Sanitation Sector Questionnaire - 1999. (Form 6 sent to WHO)	JMP99	1998		79.0		97.0		17.0		51.0				
Salud sexual y reproductiva en Colombia, Encuesta Nacional de Demografia y Salud, 2000	DHS00	2000	90.7		96.1		14.3		53.5		1.4		28.7	
Encuesta Nacional de Demografia y Salud, 2005	DHS05	2005	92.0		97.3		25.3		65.8		1.1		22.7	
Source: Colombia census 1993 (10% micro dataset from IPUMS).	CEN93	1993	66.8		90.3		11.5		42.8		6.8		49.8	

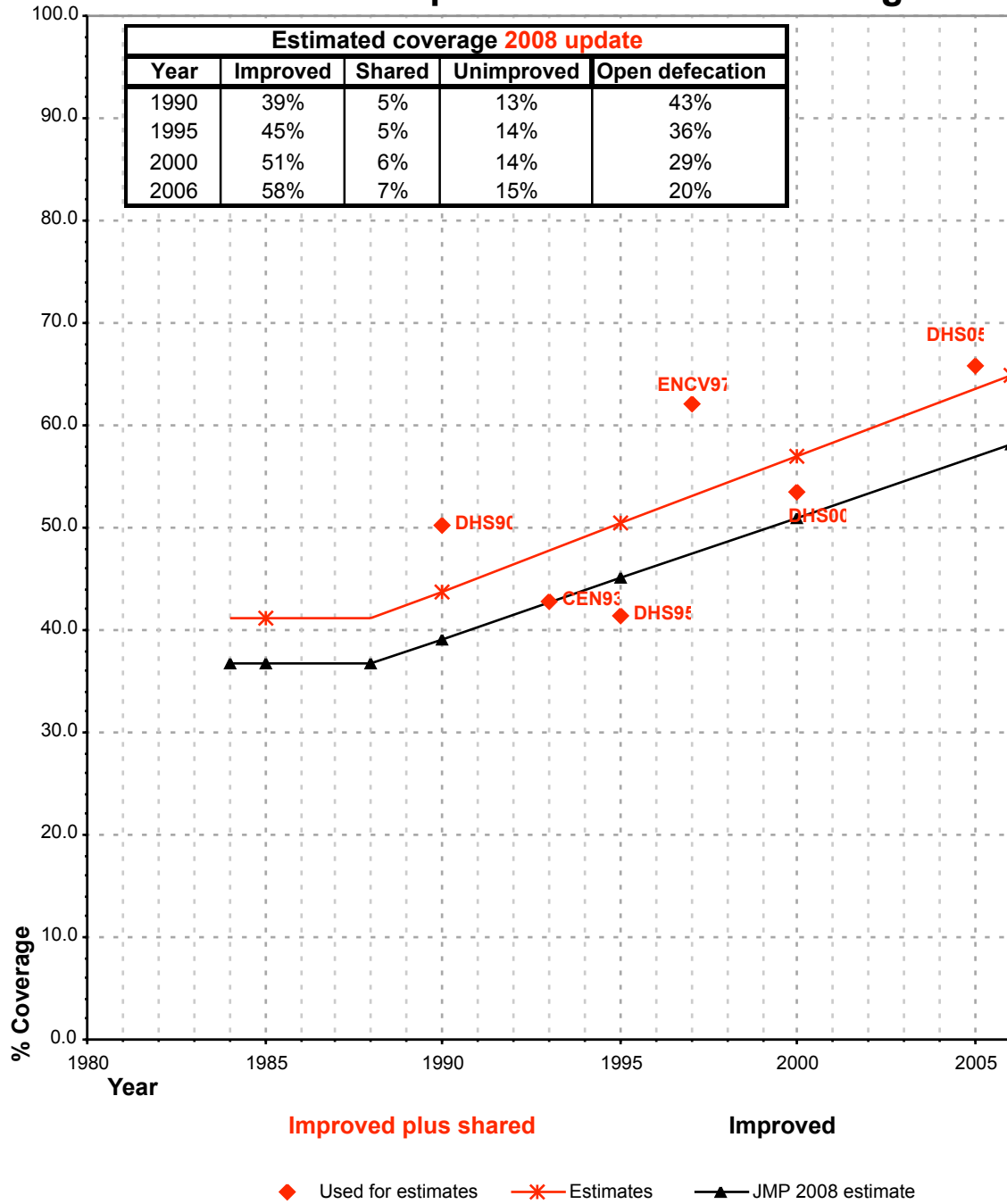
Colombia - urban - Access to improved sanitation coverage



◆ Improved plus shared ▲ Improved
◆ Used for estimates ✱ Estimates ▲ JMP 2008 estimate

Shared facilities :
 The proportion of the population using a shared improved sanitation facility is based on the DHS05

Colombia - rural - Access to improved sanitation coverage



Shared facilities :
The proportion of the population using a shared improved sanitation facility is based on the DHS05