



WHO / UNICEF

**Joint Monitoring Programme
for Water Supply and Sanitation**

Coverage Estimates
Improved Sanitation

Updated in July 2008

Cote d'Ivoire

EPM		1985		
SANITATION	Urban	Rural	Total	
Chasse d'eau 1	51.8	1.0	22.7	
Latrine a fosse 2	43.4	33.9	38.0	
Pas de W.C.	4.9	65.1	39.3	
TOTAL	100.0	100.0	100.0	
Latrine a fosse adjusted for open pit based on MICS00	28.8	26.6		
50% of adjusted latrine a fosse considered improved	14.4	13.3		
Estimated sewerage connection based on WHS03	30.8	0.4		
% Use of an improved sanitation facility	66%	14%	?	
% Sewerage connections	31%	0%		

Source: Enquete permanente aupres des menages, Resultats

EPM		1986		
SANITATION	Urban	Rural	Total	
Chasse d'eau 1	45.3	0.6	19.3	
Latrine a fosse 2	48.6	33.3	40.5	
Pas de W.C.	5.7	66.1	40.0	
Autre	0.5	0.0	0.2	
TOTAL	100.0	100.0	100.0	
Latrine a fosse adjusted for open pit based on MICS00	32.2	26.1		
50% of adjusted latrine a fosse considered improved	16.1	13.1		
Estimated sewerage connection based on WHS03	27.0	0.2		
% Use of an improved sanitation facility	61%	14%	?	
% Sewerage connections	27%	0%		

Source: Enquete permanente aupres des menages, Resultats

Urban and Rural Sanitation - Cote d'Ivoire

LSMS		1988	
SANITATION	Urban	Rural	
Chasse d'eau privée	26.9	0.5	
Chasse d'eau partagée	11.3	1.7	
Latrine à fosse privée	8.4	6.7	
Latrine à fosse partagée	44.4	20.4	
Pas de WC	8.8	70.7	
Autre	0.1	0.0	
TOTAL	99.9	100.0	
Latrine a fosse adjusted for open pit based on MICS00	35.0	18.0	
50% of adjusted latrine a fosse considered improved	17.5	9.0	
Estimated sewerage connection based on WHS03	22.7	1.3	
% Use of an improved sanitation facility	56%	11%	
% Sewerage connections	23%	1%	

Source: LIVING STANDARDS MEASUREMENT STUDY SURVEY Côte d'Ivoire 1988

DHS		1994	
SANITATION	Urban	Rural	
Chasse d'eau personnelle	19.7	1.4	
Chasse d'eau commune	9.6	0.9	
Improved Pit	34.7	12.7	
Simple Pit*	24.0	16.4	
Latrine Bucket	4.6	67.6	
No Facilities	7.2	0.9	
Other	0.1	0.0	
TOTAL	99.9	99.9	
Simple Pit adjusted for open pit based on MICS00	15.9	12.9	
50% of adjusted simple pit considered improved	8.0	6.4	
Estimated sewerage connection based on WHS03	17.4	1.4	
% Use of an improved sanitation facility	72%	21%	
% Sewerage connections	17%	1%	

Source: Cote d'Ivoire Demographic and Health Survey

Survey

DHS		1999		
SANITATION	Urban	Rural	Total	
Chasse d'eau	24.7	2.1	11.0	
Latrines ameliores	23.9	6.7	14.0	
Latrine sommaires	47.5	35.7	41.0	
No Facilities	3.6	55.3	34.0	
ND	0.2	0.1		
TOTAL	99.9	99.9	100.0	
Latrine sommaire adjusted for open pit based on MICS00	31.5	28.0		
50% of adjusted latrine sommaire considered improved	15.8	14.0		
Estimated sewerage connection based on WHS03	14.7	0.9		
% Use of an improved sanitation facility	64%	23%		
% Sewerage connections	15%	1%		

Source: Cote d'Ivoire Demographic and Health Survey

MICS		2000	
SANITATION	Urban	Rural	
Flush to sewage system/septic tank*	28.2	1.4	
Pour flush latrine	24.9	2.6	
Traditional pit latrine	27.4	32.7	
Open pit	13.9	9.0	
No facilities/bush/field	4.4	52.1	
Other	1.1	2.1	
TOTAL	99	100	
Proportion traditional latrines of traditional latrines and open pit	0.66	0.78	
50% of traditional latrines considered improved	13.7	16.4	
Estimated sewerage connection based on WHS03	16.8	0.6	
% Use of an improved sanitation facility	67%	20%	
% Sewerage connections	17%	1%	

Source: Enquête à Indicateurs Multiples, 2000

Urban and Rural Sanitation - Cote d'Ivoire (cont)

WHS		2003	
Proportion shared improved facilities/all improved facilities		0.37	0.27
SANITATION		n	Rural
Private domestic connection to sewage system		18.5	2.0
Shared domestic connection to sewage system		2.0	0.3
Private flush to septic tank		7.7	2.7
Shared flush to septic tank		6.3	0.7
Private pour flush latrine		6.8	3.8
Shared pour flush latrine		8.8	2.3
Private covered dry latrine (with privacy)		9.7	21.2
Shared covered dry latrine (with privacy)		8.5	7.9
Uncovered dry latrine (without privacy)		13.2	18.2
Bucket latrine (where fresh excreta are manually removed)		0.4	0.8
No facilities (open defecation)		15.8	39.0
Other		2.4	1.0
TOTAL		100.0	100.0
Ratio of private among domestic connections and flush		0.76	0.82
ratio sewerage/sewerage and septic tank		0.60	0.41
% Use of an improved sanitation facility		68%	41%
% Sewerage connections		20%	2%

Source: World Health Survey, WHO, 2003.

AIS		2005	
SANITATION		Urban	Rural
Chasse d'eau		29.2	6.0
Fosse/Latrine ameliorees		9.2	3.6
Latrine rudimentaires		56.8	39.7
Pas de toilettes/nature		4.6	50.3
ND		0.2	0.3
TOTAL		100.0	99.9
Latrine rudimentaire adjusted for open pit based on MICS00		37.7	31.1
50% of adjusted latrine rudimentaire considered improved		18.8	15.6
Estimated sewerage connection based on MICS06		11.3	0.0
% Use of an improved sanitation facility		57%	25%
% Sewerage connections		11%	0%

Source: Cote d'Ivoire Demographic and Health Survey 1998-99

Estimate

MICS		2006	
Proportion shared improved facilities/all improved facilities		0.39	0.51
SANITATION	Urban	Rural	
Chasse branchée a l'égoût	12.0	0.0	
Chasse branchée a fosse septique	18.9	1.9	
Chasse branchée a puits perdu	9.5	3.6	
Latrines améliorées ventilées	2.3	0.8	
Toilettes a compostage	0.0	0.0	
Latrines traditionnelles	41.0	30.6	
Chasse branchée a autre chose	3.4	0.3	
Chasse branchée a endroit inconnu/pas sûre	0.0	0.0	
Latrines a trou ouvert (tranchée)	7.3	6.8	
Seaux/tinettes	0.0	0.1	
Toilette suspendues/latrines suspendues	0.0	0.0	
Pas de toilettes/dans la nature	5.2	55.7	
Autres	0.1	0.2	
Manquant	0.2	0.1	
TOTAL	99.9	100.1	
50% of traditional latrines considered improved	20.5	15.3	
ratio sewerage/sewerage and septic tank	0.39	0.00	
% Use of an improved sanitation facility	63%	22%	
% Sewerage connections	12%	0%	

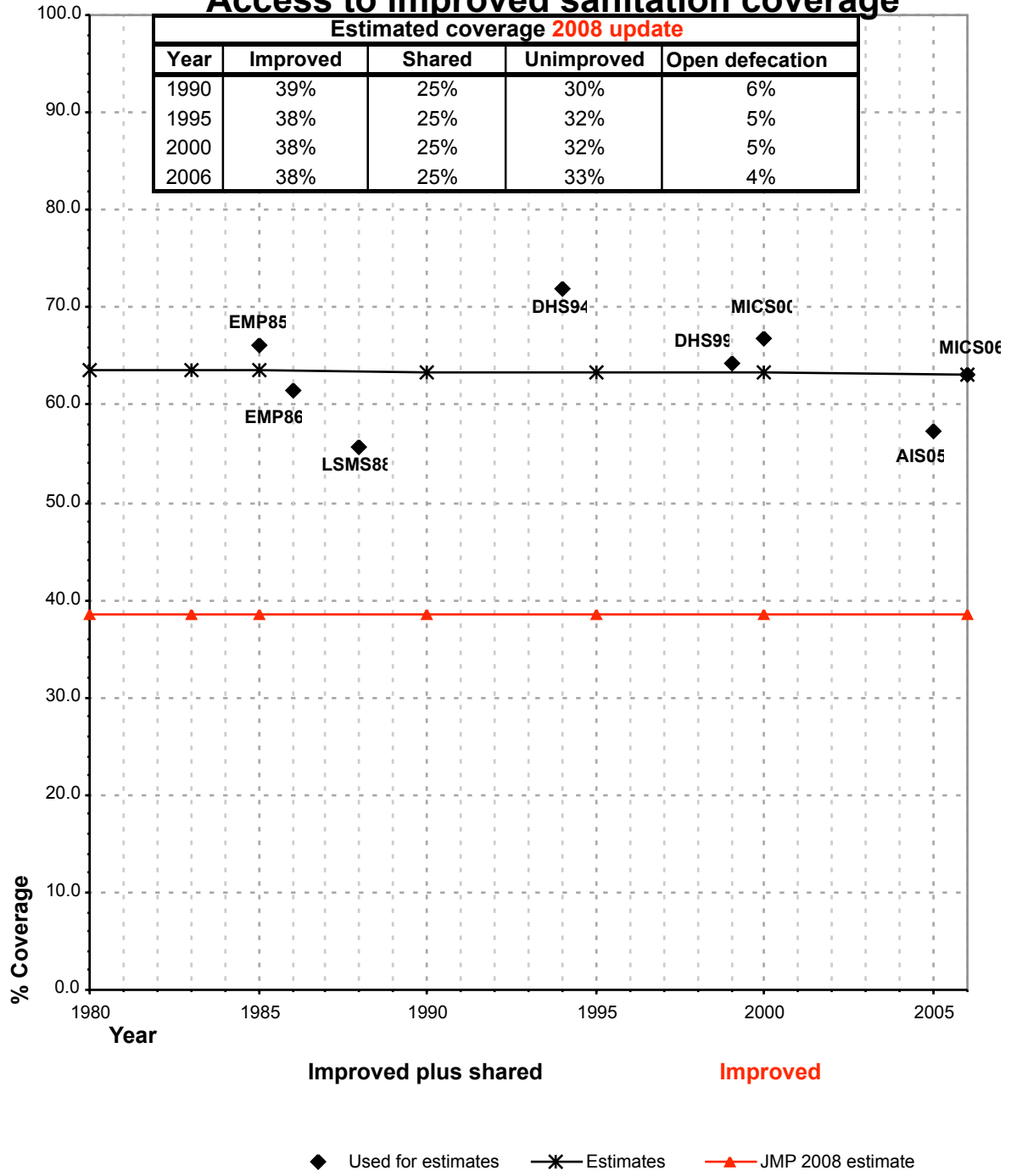
Source: Enquête à Indicateurs Multiples, 2006

FORM6/WHO		1999	
SANITATION	Urban	Rural	
Population served with household connections to conventional sewers	109.0	0.0	
connections but served with adequate,	826.7	627.3	
Total population served	935.7	627.3	
Total population unserved	81.6	839.8	
Total population	1017.2	1467.1	
Access to improved sanitation	0%	0%	
% House connections	11%	0%	

Source: Global Water Supply and Sanitation Assessment 2000.

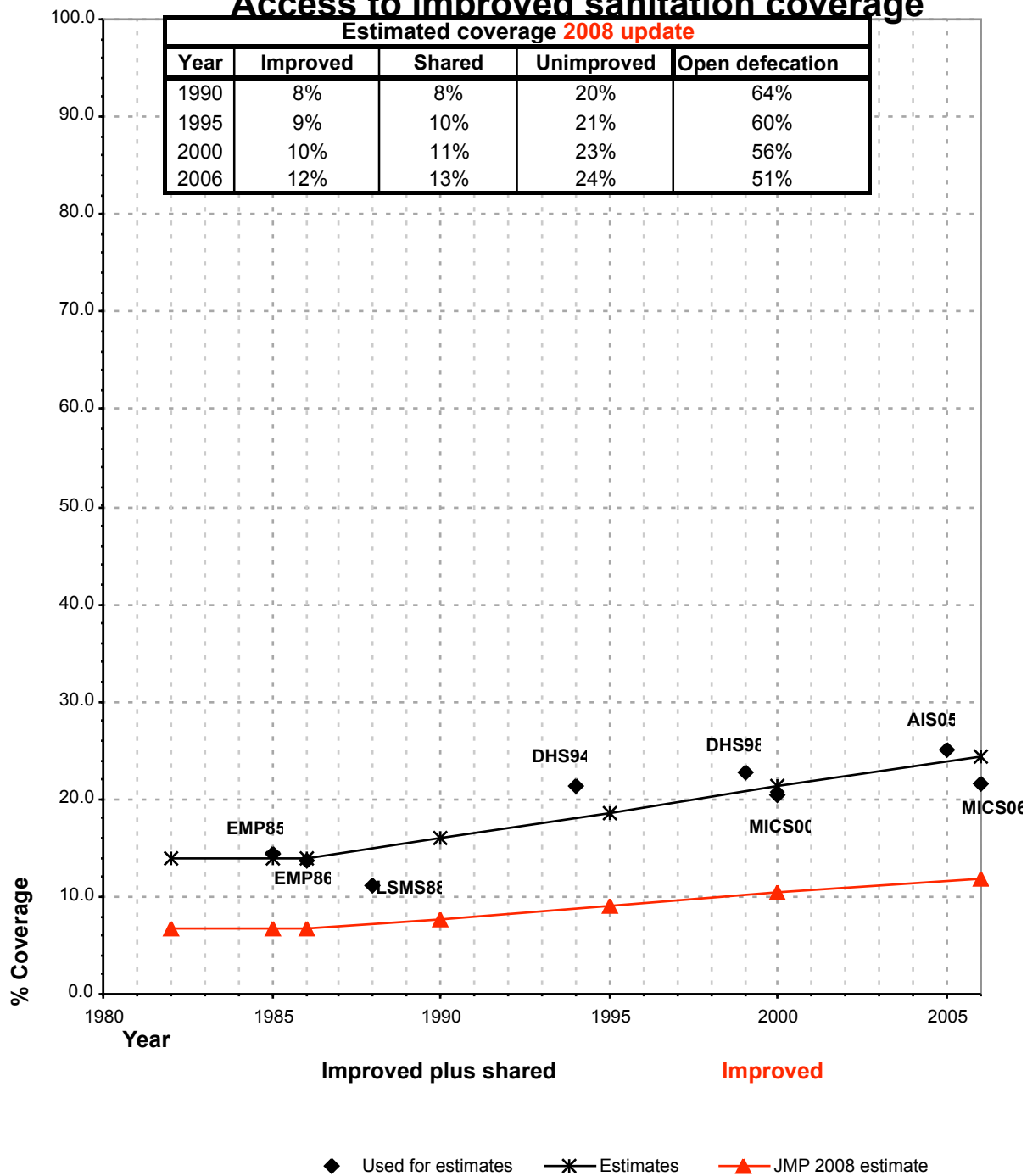
Côte d'Ivoire			SANITATION								OPEN DEFECTION			
			URBAN				RURAL				Urban		Rural	
			HC		Total		HC		Total		Used for estimates	Not used for estimates	Used for estimates	Not used for estimates
Source	Code	Year	Used for estimates	Not used for estimates	Used for estimates	Not used for estimates	Used for estimates	Not used for estimates	Used for estimates	Not used for estimates	Used for estimates	Not used for estimates		
Enquête permanente aupres des menages, Resultats Provisoires, Annee d'enquete 1985, Republique de Cote d'Ivoire, Min. de l'Economie et des Finances, Direction de la Statistique.	EPM85	1985	30.8		66.1		0.4		14.3		4.9	65.1		
Enquete permanente aupres des menages, Resultats Provisoires, Annee d'enquete 1985, Republique de Cote d'Ivoire, Min. de l'Economie et des Finances, Direction de la Statistique.	EPM86	1986	27.0		61.4		0.2		13.7		5.7	66.1		
The International Drinking Water Supply and Sanitation Decade. Review of National Progress (as at December 1988). WHO 1990.	WHO88	1988				69.0				20.0				
The International Drinking Water Supply and Sanitation Decade. End of Decade Review (as at December 1990). WHO1992.	WHO90	1990				81.0				100.0				
Water Supply and Sanitation Sector Monitoring Report 1993 (Sector Status as of 31 December 1991)	JMP93	1991				59.0				62.0				
Water Supply and Sanitation Sector Monitoring Report - 1996. Sector Status as of 31 December 1994. WHO/UNICEF 1996.	JMP96	1994				59.0				51.0				
Cote d'Ivoire Demographic and Health Survey 1994	DHS94	1994	17.4		72.0		1.4		21.4					
Cote d'Ivoire Demographic and Health Survey 1998	DHS99	1999	14.7		64.4		0.9		22.8		3.6	55.3		
Global Water Supply and Sanitation Assessment 2000. Water Supply and Sanitation Sector Qu	JMP99	1999		10.7		92.0		0.0		43.0				
Enquête à Indicateurs Multiples, 2000	MICS00	2000	16.8		66.8		0.6		20.4		4.4	52.1		
LIVING STANDARDS MEASUREMENT STUDY SURVEY, Côte d'Ivoire, 1988	LSMS88	1988	22.7		55.7		1.3		11.2		8.8	70.7		
World Health Survey, WHO, 2003.	WHS03	2003		20.5		68.2		2.4		41.0		15.8	39.0	
Cote d'Ivoire AIS, 2005	AIS05	2005	11.3		57.2		0.0		25.2		4.6	50.3		
Enquête à Indicateurs Multiples, 2006	MICS06	2006	12.0		63.2		0.0		21.6		5.2	55.7		

Côte d'Ivoire - urban - Access to improved sanitation coverage



Shared facilities :
The proportion of the population using a shared improved sanitation facility is based on the MICS06

Côte d'Ivoire - rural - Access to improved sanitation coverage



Total access : Some of the households included in the WHS sample from rural areas could not be interviewed because of the political situation. WHS has therefore not been used for the rural estimate

Shared facilities :

The proportion of the population using a shared improved sanitation facility is