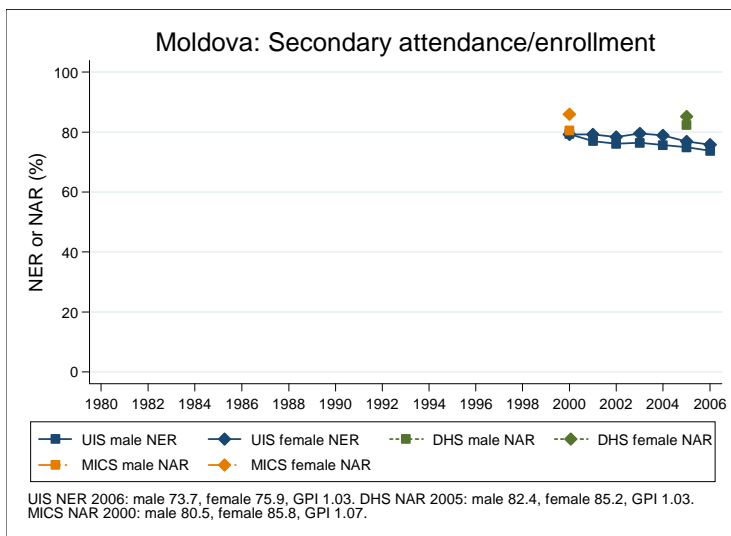
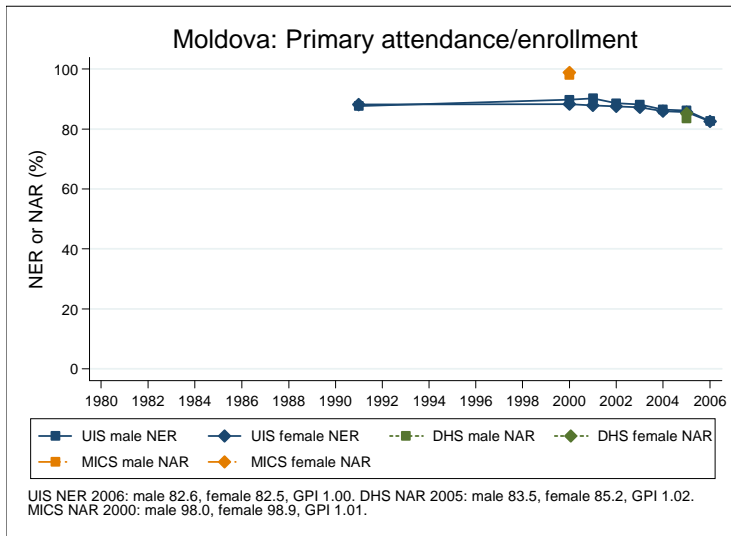
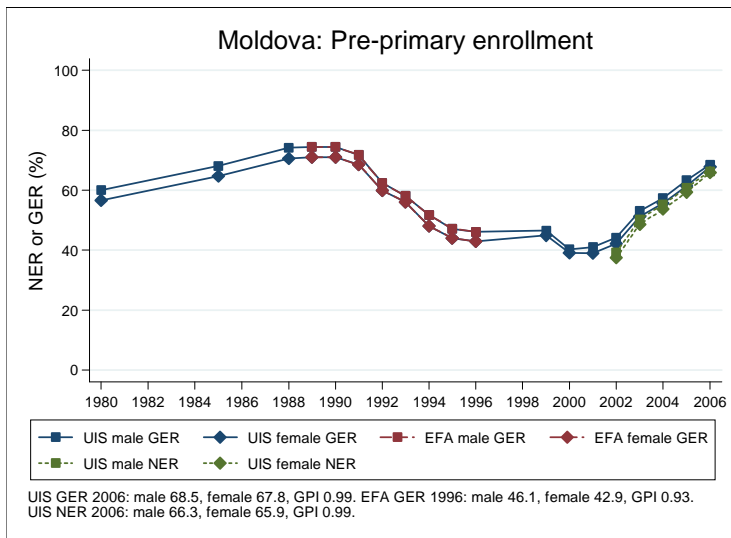
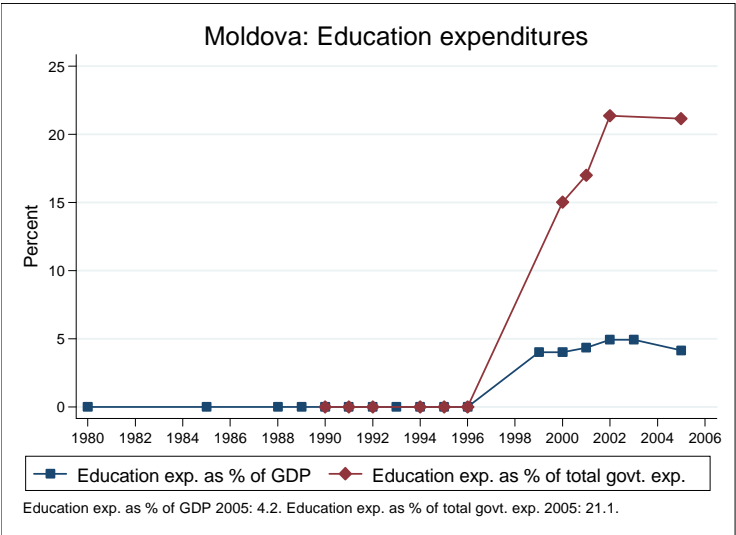
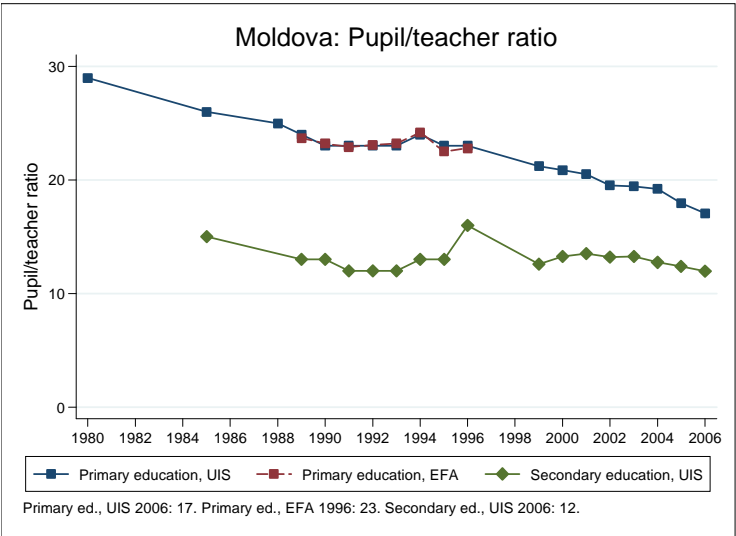
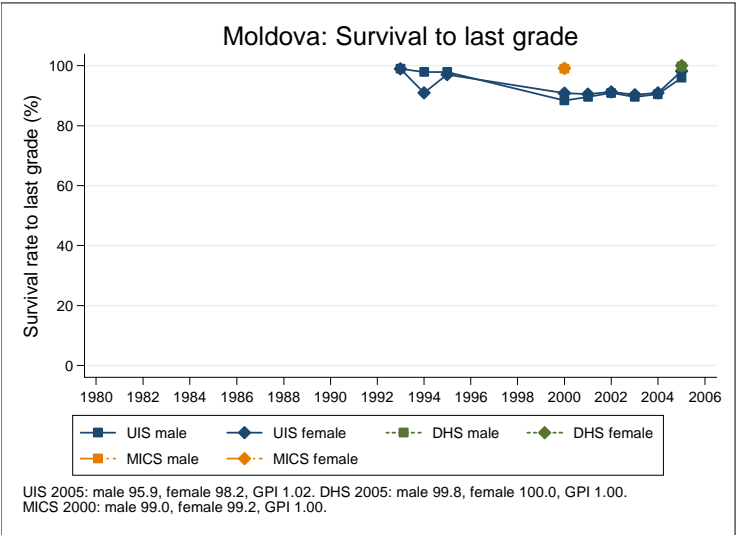


Education statistics: Moldova

UNICEF, Division of Policy and Practice, Statistics and Monitoring Section, www.childinfo.org, May 2008





Administrative data: UNESCO Institute for Statistics

Moldova

Population (1,000)	Total	Male	Female
Preschool age, 2006	150	77	73
Primary school age, 2006	188	96	92
Secondary school age, 2006	448	228	220
Total population, all ages, 2007	3794	1815	1979
Official school age (years)	Entrance age	Graduation age	Duration
Preschool, 2006	3	6	4
Primary school, 2006	7	10	4
Secondary school, 2006	11	17	7
Compulsory education, 2006	7	15	9
Net enrolment ratio (%)	Total	Male	Female
Preschool NER, 2006	66.1	66.3	65.9
Primary school NER, 2006	82.6	82.6	82.5
Secondary school NER, 2006	74.8	73.7	75.9
Gross enrolment ratio (%)	Total	Male	Female
Preschool GER, 2006	68.2	68.5	67.8
Primary school GER, 2006	90.9	91.4	90.4
Secondary school GER, 2006	82.3	80.9	83.7
Entrance and transition (%)	Total	Male	Female
Primary net intake rate, 2006	64.2	65.0	63.3
Primary gross intake rate, 2006	88.7	90.1	87.1
Primary entrants with ECCE			
Transition rate primary-secondary, 2005	98.6	98.3	98.9
Repetition and completion	Total	Male	Female
Primary repetition rate (%), 2002	0.9	0.9	0.9
Secondary repetition rate (%), 2002	0.9	1.0	0.9
Survival rate to grade 5 (%)			
Survival rate to last primary grade (%), 2005	97.0	95.9	98.2
Primary completion rate (%), 2006	90.3	89.9	90.8
School life expectancy (years), 2006	9.4	9.3	9.5
Teaching staff	Pupil/teacher ratio	% trained teachers	% female teachers
Preschool, 2006	9.9	90.0	100.0
Primary school, 2006	17.0		96.8
Secondary school, 2006	12.0		75.5
Public expenditure per student as % of GDP per capita			
Primary school, 2005	14.9		
Secondary school, 2005	21.6		
Total public expenditure on education			
As % of GDP, 2005	4.2		
As % of total government expenditure, 2005	21.1		

Data sources:

Population: United Nations Population Division, *World Population Prospects: The 2006 Revision*, March 2007.

Education: UNESCO Institute for Statistics, Data Centre, <http://stats.uis.unesco.org/unesco/ReportFolders/ReportFolders.aspx>, January 2008.

Survey data: Moldova 2005 DHS

Moldova

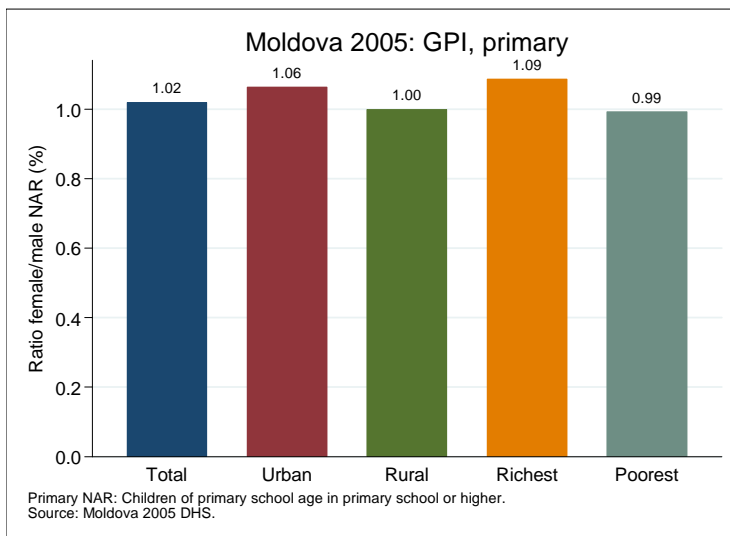
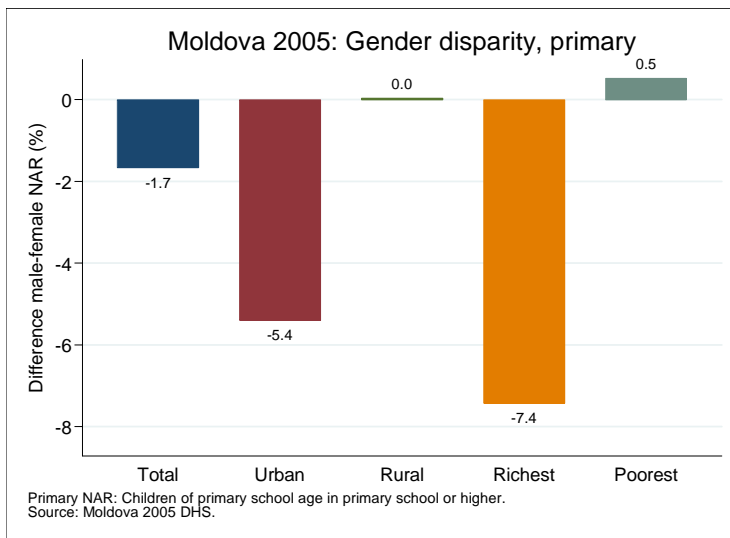
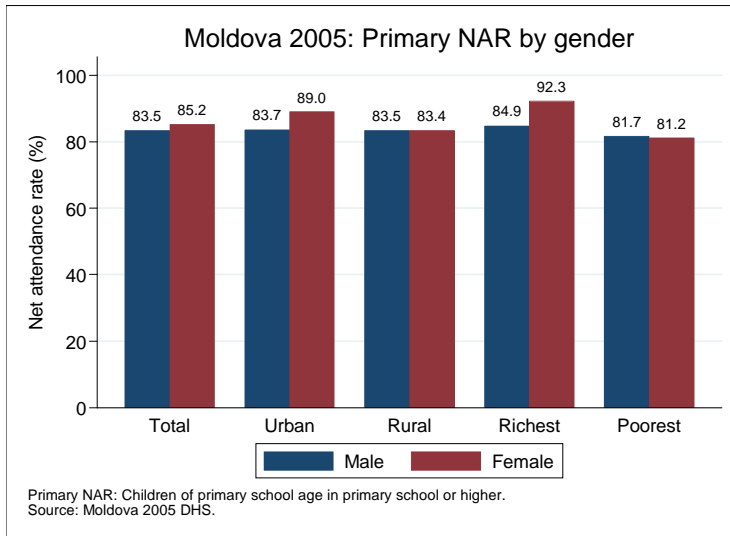
Net attendance rate (%)	Total	Male	Female	Urban	Rural	Richest	Poorest
Primary school NAR	84.4	83.5	85.2	86.2	83.4	88.4	81.4
Secondary school NAR	83.7	82.4	85.2	88.0	81.6	90.9	71.4
Gross attendance rate (%)	Total	Male	Female	Urban	Rural	Richest	Poorest
Primary school GAR	105.7	104.4	107.1	106.0	105.6	104.8	111.5
Secondary school GAR	99.5	95.9	103.2	112.7	92.7	119.7	78.7
Primary age in school (%)	Total	Male	Female	Urban	Rural	Richest	Poorest
Primary school	82.8	81.9	83.6	84.5	81.9	86.9	80.1
Secondary school	1.6	1.6	1.6	1.7	1.5	1.5	1.3
Preschool	12.5	12.5	12.4	11.0	13.2	10.4	14.2
Non-formal education							
Secondary age in school (%)	Total	Male	Female	Urban	Rural	Richest	Poorest
Secondary school	83.7	82.3	85.1	87.8	81.6	90.6	71.4
Higher education	0.1	0.0	0.1	0.2	0.0	0.3	0.0
Primary school	9.1	9.0	9.3	8.2	9.6	7.1	12.9
Preschool	0.0	0.0	0.1	0.0	0.1	0.0	0.2
Non-formal education							
Entrance and transition (%)	Total	Male	Female	Urban	Rural	Richest	Poorest
Primary net intake rate	33.8	29.7	37.8	41.0	30.3	45.3	27.0
Primary gross intake rate	92.4	97.1	87.7	91.2	93.0	96.7	85.9
Primary entrants with ECCE	84.5	82.9	86.2	90.5	81.6	89.2	74.1
Transition rate prim.-sec.	99.6	99.3	100.0	99.2	99.8	99.4	100.0
Repetition and completion (%)	Total	Male	Female	Urban	Rural	Richest	Poorest
Primary repetition rate	0.9	1.0	0.7	0.6	1.0	0.2	0.8
Primary dropout rate	0.0	0.1	0.0	0.1	0.0	0.2	0.0
Secondary repetition rate	1.1	1.1	1.1	0.8	1.3	1.1	0.9
Secondary dropout rate	5.2	6.3	4.2	3.8	6.1	2.9	10.6
Survival rate to grade 5	99.9	99.8	100.0	99.7	100.0	99.3	100.0
Survival rate to last prim. grade	99.9	99.8	100.0	99.7	100.0	99.3	100.0

Primary school NAR: children of primary school age in primary school or higher.

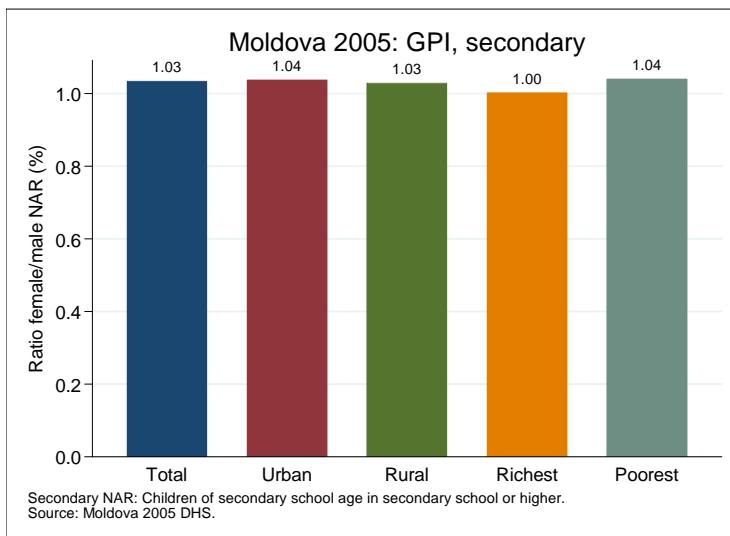
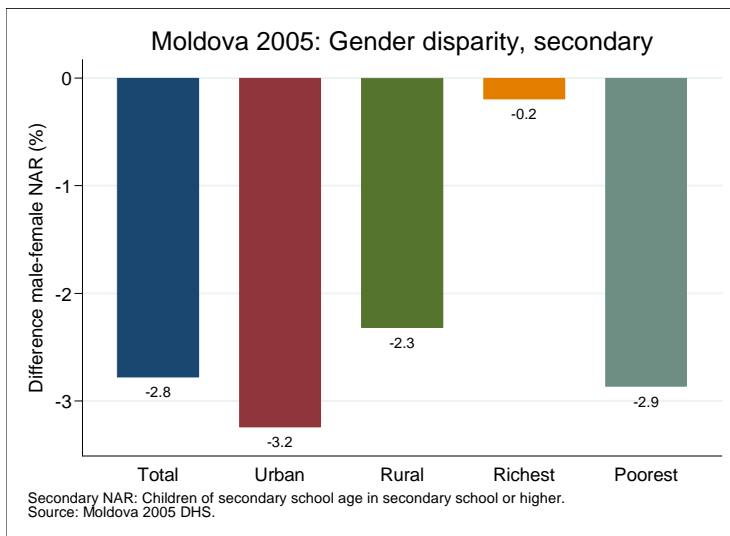
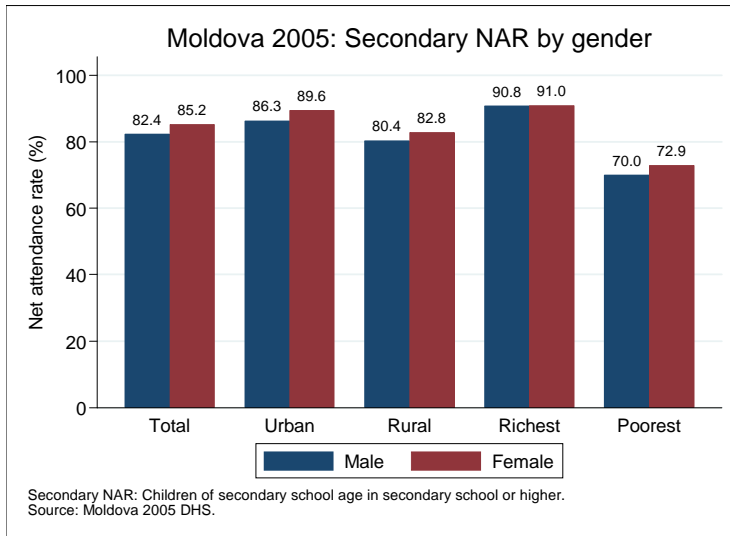
Secondary school NAR: children of secondary school age in secondary school or higher.

Data source: Moldova 2005 DHS.

Gender disparity in primary school (survey data)



Gender disparity in secondary school (survey data)



Projections to 2015

