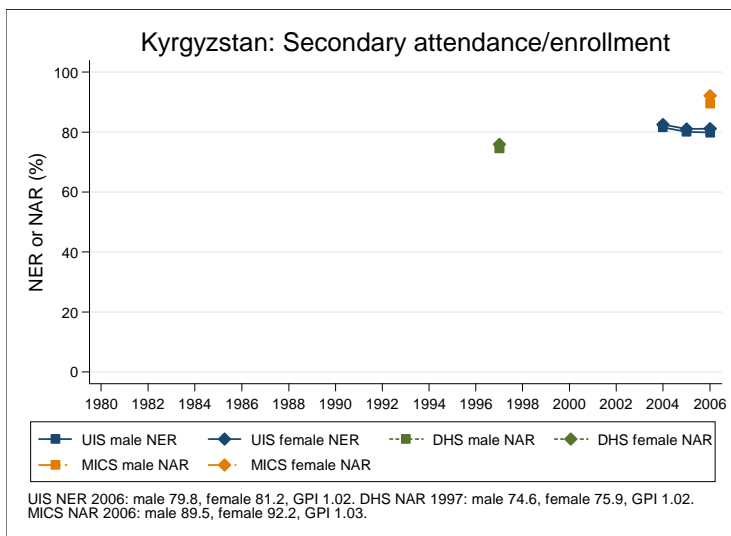
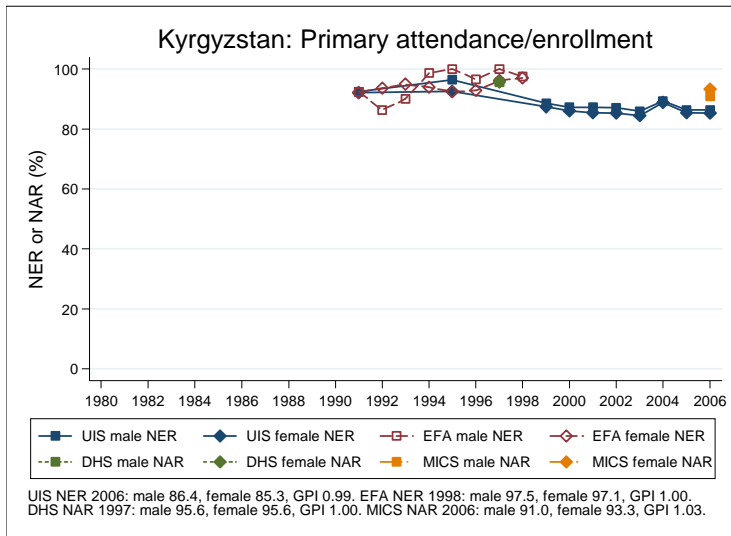
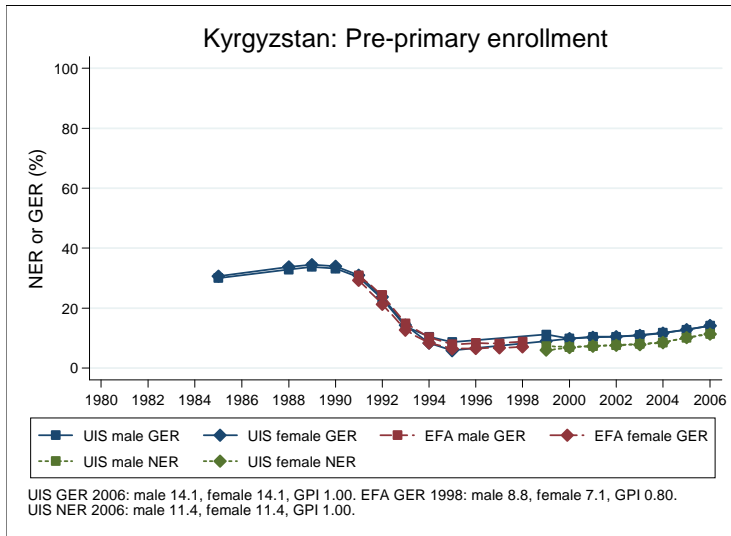
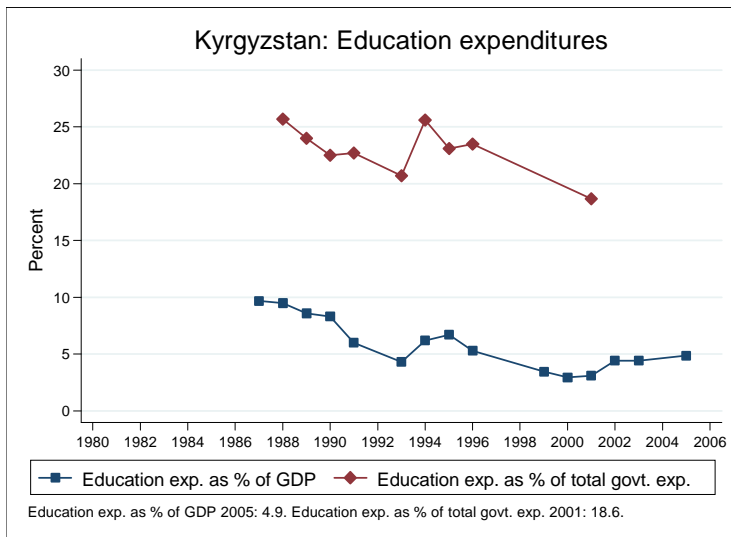
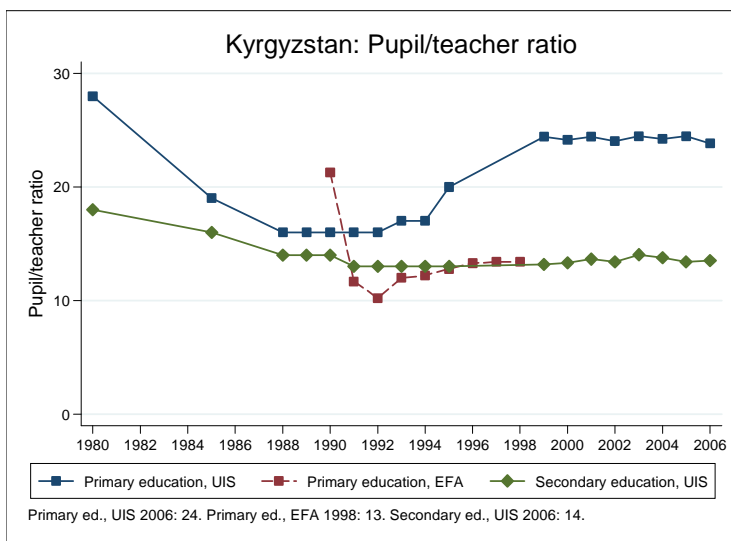
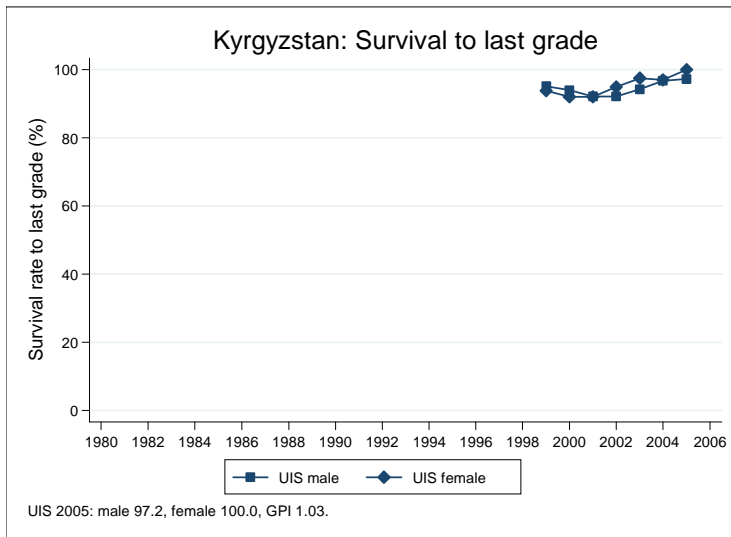


Education statistics: Kyrgyzstan

UNICEF, Division of Policy and Practice, Statistics and Monitoring Section, www.childinfo.org, May 2008





Administrative data: UNESCO Institute for Statistics

Kyrgyzstan

Population (1,000)	Total	Male	Female
Preschool age, 2006	405	207	199
Primary school age, 2006	438	223	215
Secondary school age, 2006	832	423	409
Total population, all ages, 2007	5317	2621	2696
Official school age (years)	Entrance age	Graduation age	Duration
Preschool, 2006	3	6	4
Primary school, 2006	7	10	4
Secondary school, 2006	11	17	7
Compulsory education, 2006	7	15	9
Net enrolment ratio (%)	Total	Male	Female
Preschool NER, 2006	11.4	11.4	11.4
Primary school NER, 2006	85.9	86.4	85.3
Secondary school NER, 2006	80.5	79.8	81.2
Gross enrolment ratio (%)	Total	Male	Female
Preschool GER, 2006	14.1	14.1	14.1
Primary school GER, 2006	96.7	97.2	96.2
Secondary school GER, 2006	86.4	85.8	86.9
Entrance and transition (%)	Total	Male	Female
Primary net intake rate, 2006	59.4	60.5	58.3
Primary gross intake rate, 2006	97.4	98.1	96.7
Primary entrants with ECCE, 2006	12.8	12.7	12.8
Transition rate primary-secondary, 2005	99.9	99.9	99.9
Repetition and completion	Total	Male	Female
Primary repetition rate (%)			
Secondary repetition rate (%)			
Survival rate to grade 5 (%)			
Survival rate to last primary grade (%), 2005	98.6	97.2	100.0
Primary completion rate (%), 2006	99.4	99.1	99.7
School life expectancy (years), 2006	10.0	9.9	10.0
Teaching staff	Pupil/teacher ratio	% trained teachers	% female teachers
Preschool, 2006	23.9	41.0	99.8
Primary school, 2006	23.8	61.3	96.6
Secondary school, 2006	13.5	77.9	73.0
Public expenditure per student as % of GDP per capita			
Primary school, 2002	7.6		
Secondary school, 2002	14.3		
Total public expenditure on education			
As % of GDP, 2005	4.9		
As % of total government expenditure, 2001	18.6		

Data sources:

Population: United Nations Population Division, *World Population Prospects: The 2006 Revision*, March 2007.

Education: UNESCO Institute for Statistics, Data Centre, <http://stats.uis.unesco.org/unesco/ReportFolders/ReportFolders.aspx>, January 2008.

Survey data: Kyrgyzstan 1997 DHS

Kyrgyzstan

Net attendance rate (%)	Total	Male	Female	Urban	Rural	Richest	Poorest
Primary school NAR	95.6	95.6	95.6	95.2	95.8	96.6	94.0
Secondary school NAR	75.2	74.6	75.9	79.5	73.8	82.0	71.7
Gross attendance rate (%)	Total	Male	Female	Urban	Rural	Richest	Poorest
Primary school GAR	111.6	111.2	112.0	108.2	112.9	110.9	107.8
Secondary school GAR	76.8	76.0	77.6	80.4	75.5	81.1	74.1
Primary age in school (%)	Total	Male	Female	Urban	Rural	Richest	Poorest
Primary school	94.4	94.6	94.3	94.1	94.6	95.8	92.5
Secondary school	1.2	1.0	1.4	1.1	1.2	0.8	1.5
Preschool							
Non-formal education							
Secondary age in school (%)	Total	Male	Female	Urban	Rural	Richest	Poorest
Secondary school	73.8	73.6	74.0	75.3	73.3	77.2	71.7
Higher education	1.4	1.0	1.9	4.1	0.5	4.8	0.0
Primary school	10.9	10.7	11.2	10.1	11.2	9.7	11.0
Preschool							
Non-formal education							
Entrance and transition (%)	Total	Male	Female	Urban	Rural	Richest	Poorest
Primary net intake rate							
Primary gross intake rate							
Primary entrants with ECCE							
Transition rate prim.-sec.							
Repetition and completion (%)	Total	Male	Female	Urban	Rural	Richest	Poorest
Primary repetition rate							
Primary dropout rate							
Secondary repetition rate							
Secondary dropout rate							
Survival rate to grade 5*	100.0	100.0	100.0	100.0	100.0	100.0	100.0
Survival rate to last prim. grade							

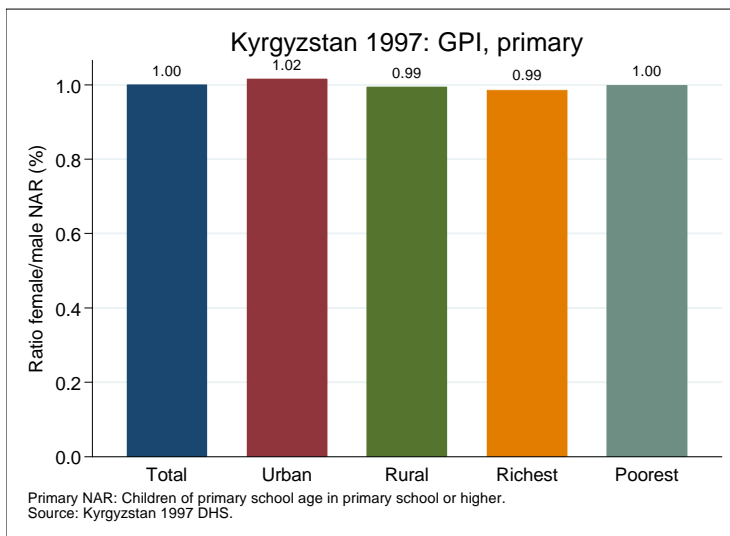
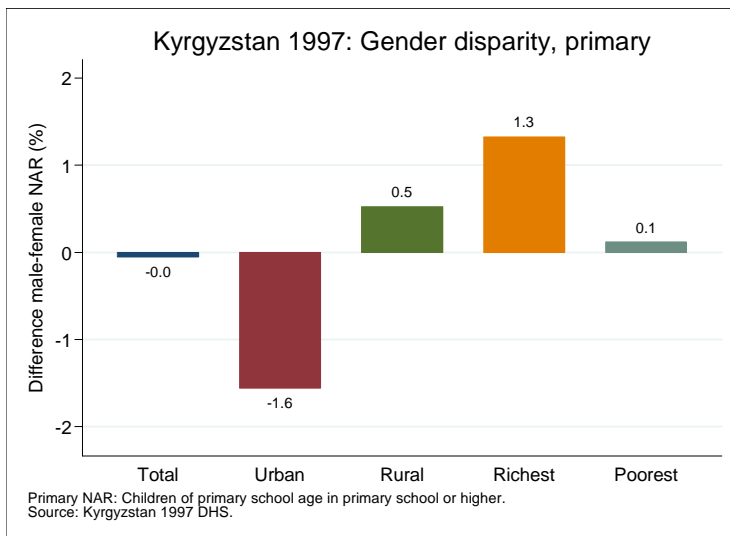
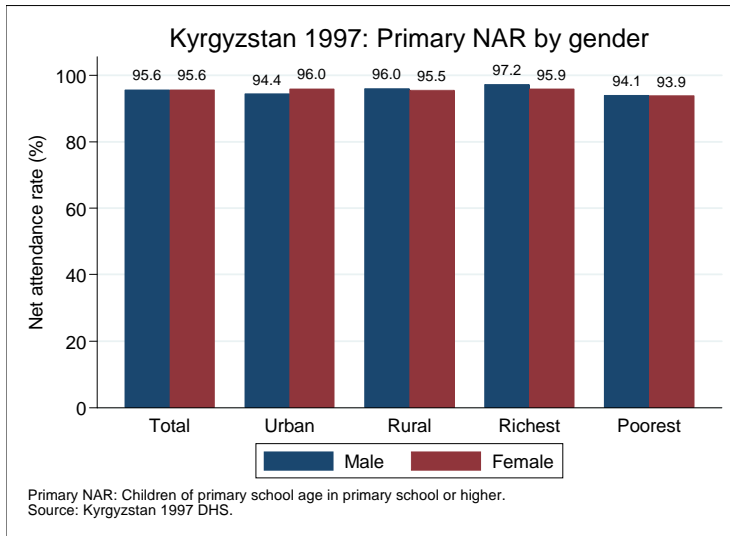
Primary school NAR: children of primary school age in primary school or higher.

Secondary school NAR: children of secondary school age in secondary school or higher.

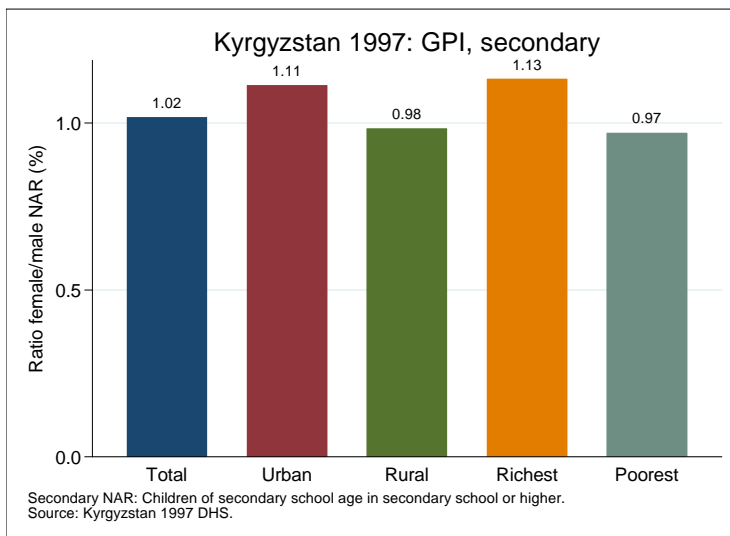
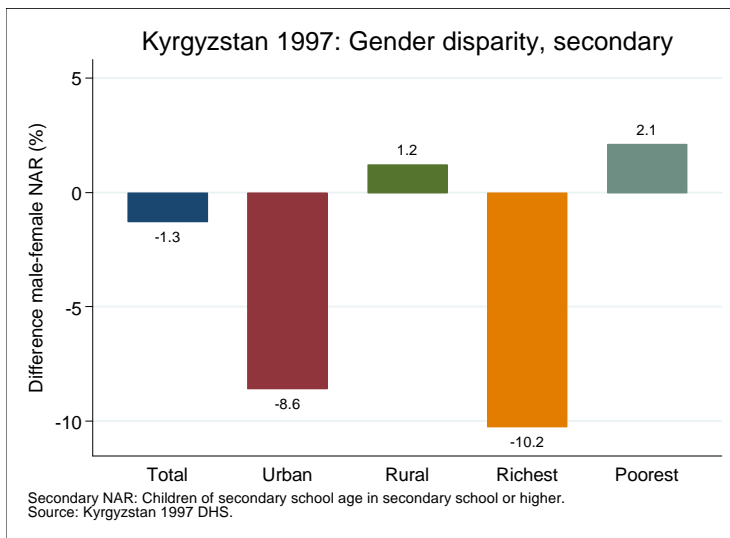
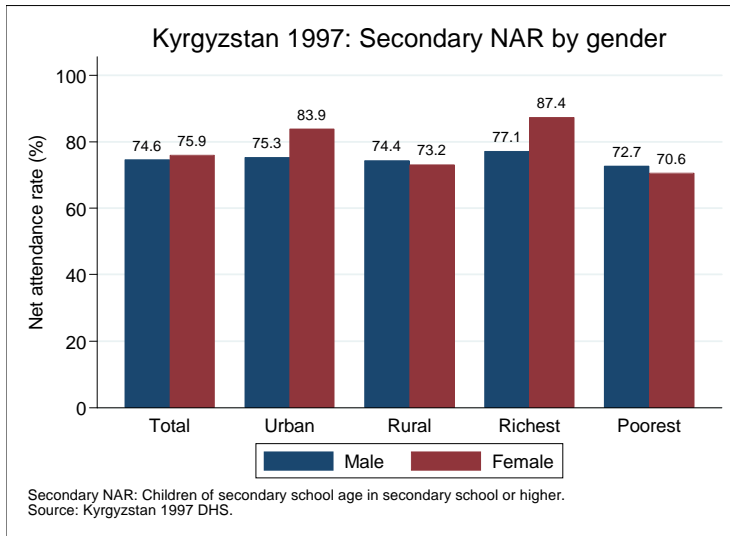
Data source: Kyrgyzstan 1997 DHS.

* Percent of schooled 15- to 17-year-olds with 4 or more years of education.

Gender disparity in primary school (survey data)



Gender disparity in secondary school (survey data)



Projections to 2015

