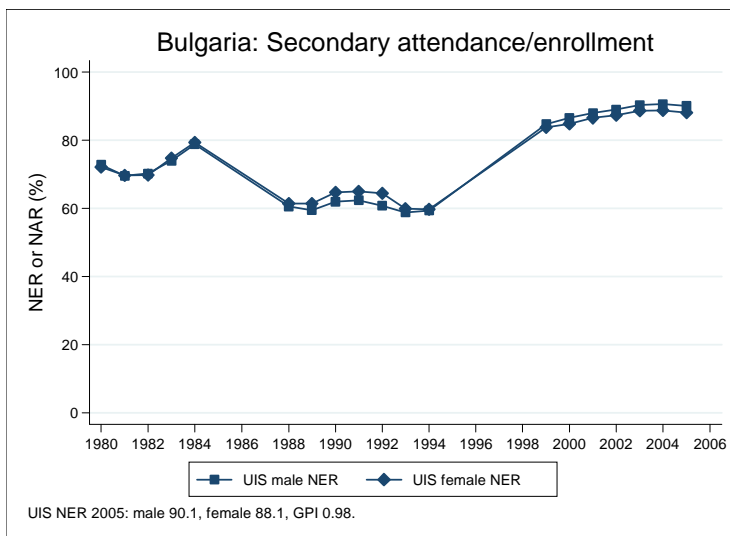
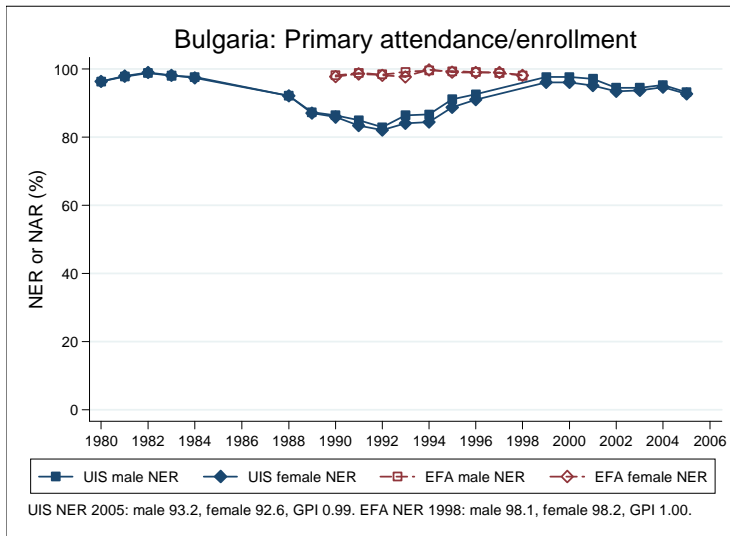
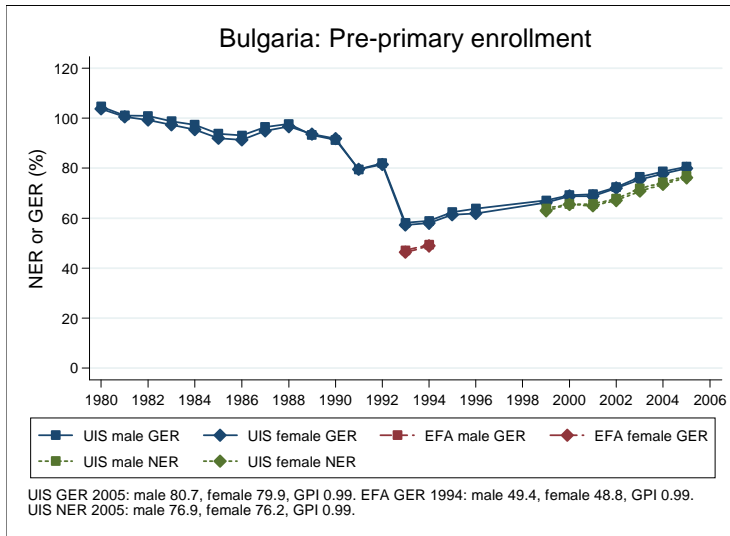
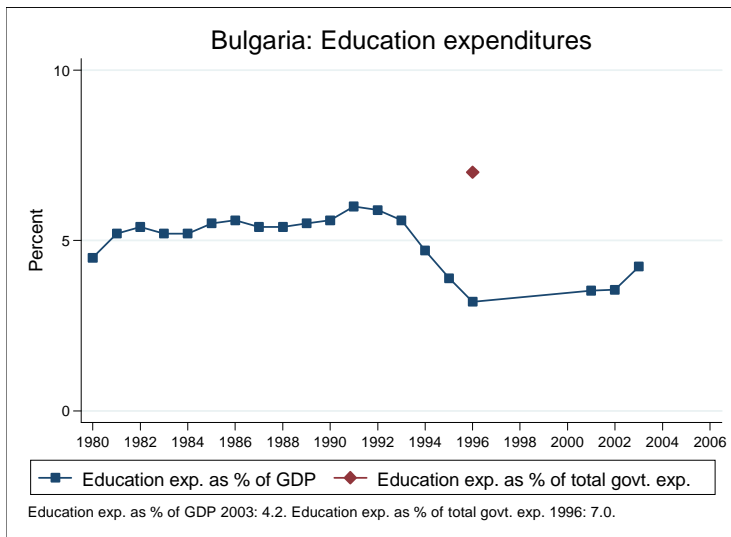
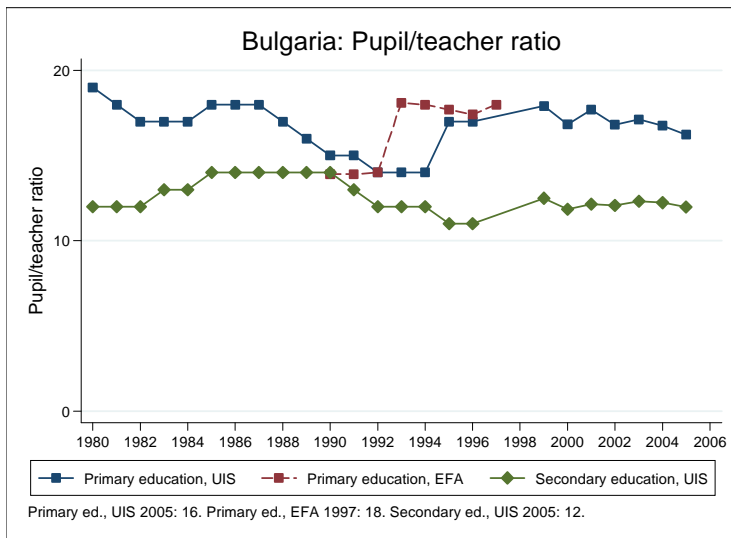
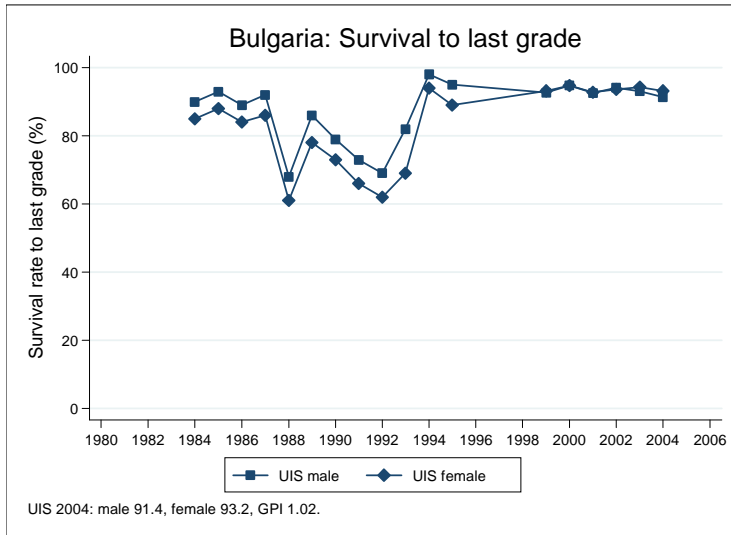


Education statistics: Bulgaria

UNICEF, Division of Policy and Practice, Statistics and Monitoring Section, www.childinfo.org, May 2008





Administrative data: UNESCO Institute for Statistics

Bulgaria

| Population (1,000) | Total | Male | Female |
|--|----------------------------|---------------------------|--------------------------|
| Preschool age, 2006 | 251 | 129 | 122 |
| Primary school age, 2006 | 272 | 140 | 133 |
| Secondary school age, 2006 | 629 | 322 | 307 |
| Total population, all ages, 2007 | 7639 | 3700 | 3939 |
| Official school age (years) | Entrance age | Graduation age | Duration |
| Preschool, 2005 | 3 | 6 | 4 |
| Primary school, 2005 | 7 | 10 | 4 |
| Secondary school, 2005 | 11 | 17 | 7 |
| Compulsory education, 2005 | 7 | 14 | 8 |
| Net enrolment ratio (%) | Total | Male | Female |
| Preschool NER, 2005 | 76.6 | 76.9 | 76.2 |
| Primary school NER, 2005 | 92.9 | 93.2 | 92.6 |
| Secondary school NER, 2005 | 89.1 | 90.1 | 88.1 |
| Gross enrolment ratio (%) | Total | Male | Female |
| Preschool GER, 2005 | 80.3 | 80.7 | 79.9 |
| Primary school GER, 2005 | 102.0 | 102.6 | 101.3 |
| Secondary school GER, 2005 | 104.5 | 106.8 | 102.2 |
| Entrance and transition (%) | Total | Male | Female |
| Primary net intake rate, 2002 | 85.8 | 85.5 | 86.1 |
| Primary gross intake rate, 2005 | 95.7 | 96.8 | 94.5 |
| Primary entrants with ECCE | | | |
| Transition rate primary-secondary, 2004 | 95.6 | 95.3 | 95.9 |
| Repetition and completion | Total | Male | Female |
| Primary repetition rate (%), 2005 | 2.3 | 2.7 | 2.0 |
| Secondary repetition rate (%), 2005 | 1.8 | 2.4 | 1.3 |
| Survival rate to grade 5 (%), 1991 | 90.6 | 91.0 | 90.2 |
| Survival rate to last primary grade (%), 2004 | 92.3 | 91.4 | 93.2 |
| Primary completion rate (%), 2005 | 98.6 | 98.4 | 98.7 |
| School life expectancy (years), 2005 | 11.3 | 11.4 | 11.1 |
| Teaching staff | Pupil/teacher ratio | % trained teachers | % female teachers |
| Preschool, 2005 | 11.5 | | 99.8 |
| Primary school, 2005 | 16.2 | | 92.8 |
| Secondary school, 2005 | 12.0 | | 77.2 |
| Public expenditure per student as % of GDP per capita | | | |
| Primary school, 2003 | 19.0 | | |
| Secondary school, 2003 | 20.9 | | |
| Total public expenditure on education | | | |
| As % of GDP, 2003 | 4.2 | | |
| As % of total government expenditure | | | |

Data sources:

Population: United Nations Population Division, *World Population Prospects: The 2006 Revision*, March 2007.

Education: UNESCO Institute for Statistics, Data Centre, <http://stats.uis.unesco.org/unesco/ReportFolders/ReportFolders.aspx>, January 2008.