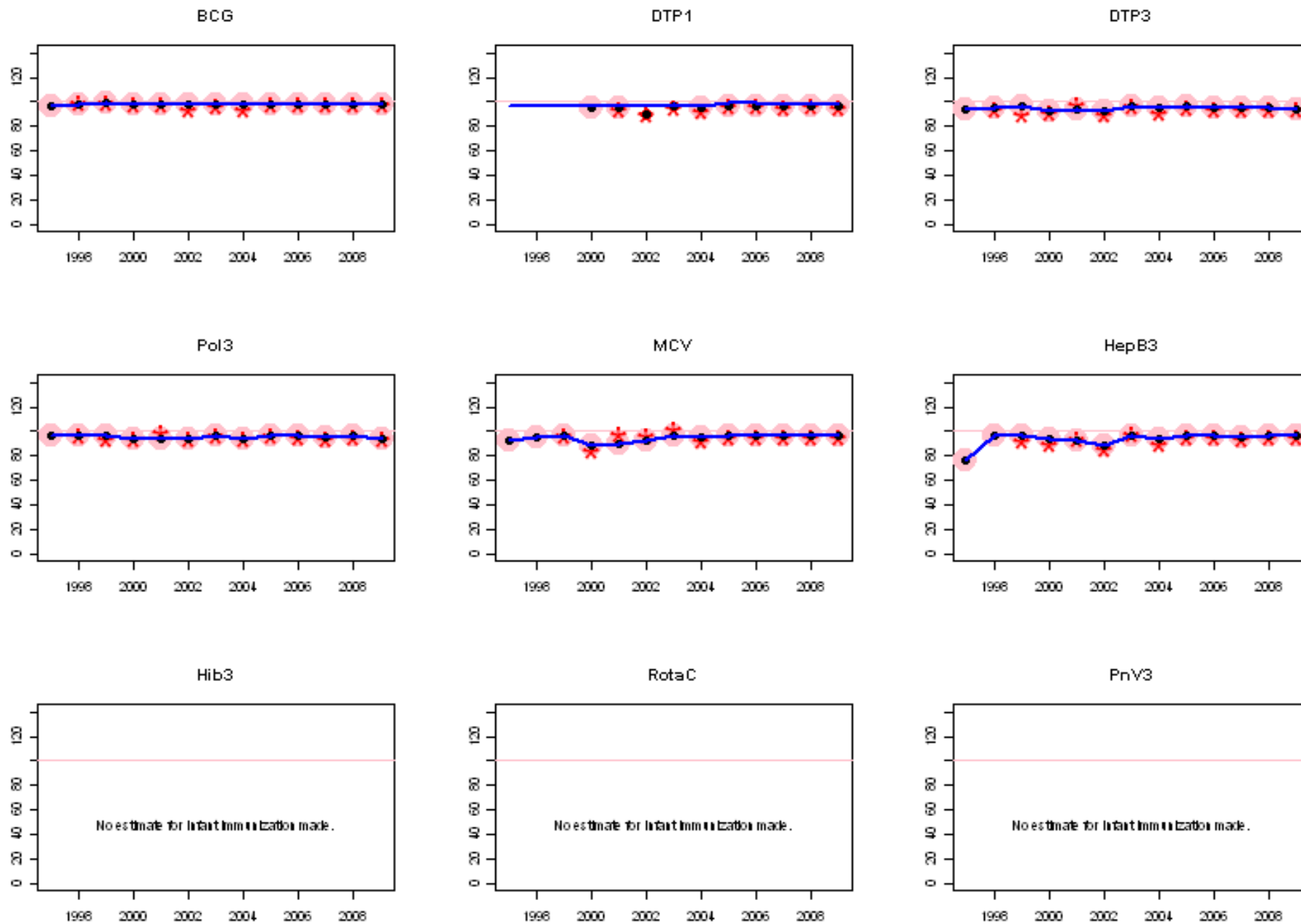
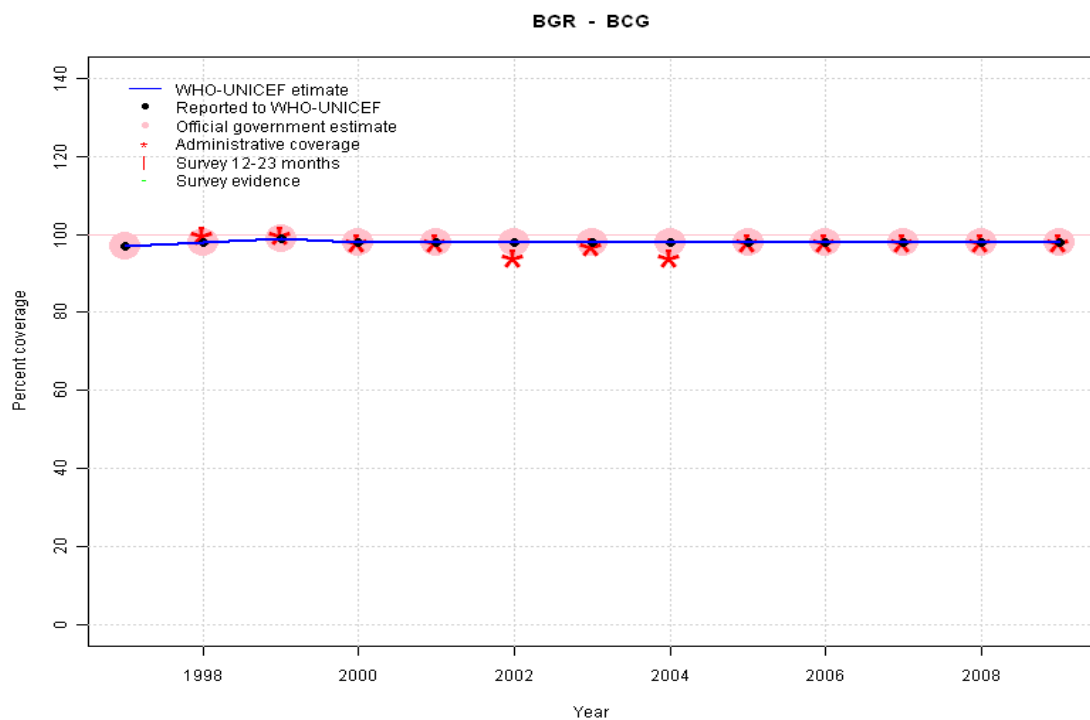


Bulgaria: WHO and UNICEF estimates of immunization coverage, 1997 - 2009



Bulgaria - BCG

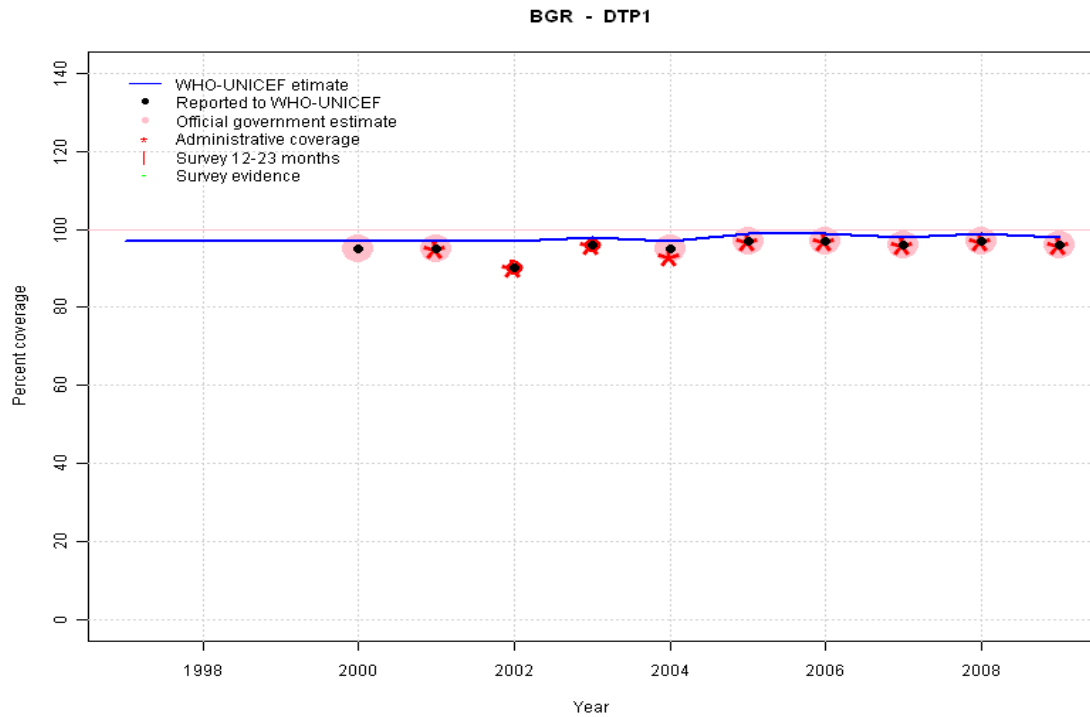
Description:



1997: Legacy estimate.
 1998: Estimate based on reported data.
 1999: Estimate based on reported data.
 2000: Estimate based on reported data.
 2001: Estimate based on reported data.
 2002: Estimate based on reported data.
 2003: Estimate based on reported data.
 2004: Estimate based on reported data.
 2005: Estimate based on reported data.
 2006: Estimate based on reported data.
 2007: Estimate based on reported data.
 2008: Estimate based on reported data.
 2009: Estimate based on reported data.

| | 1997 | 1998 | 1999 | 2000 | 2001 | 2002 | 2003 | 2004 | 2005 | 2006 | 2007 | 2008 | 2009 |
|----------------|------|------|------|------|------|------|------|------|------|------|------|------|------|
| Estimate | 97 | 98 | 99 | 98 | 98 | 98 | 98 | 98 | 98 | 98 | 98 | 98 | 98 |
| Reported | 97 | 98 | 99 | 98 | 98 | 98 | 98 | 98 | 98 | 98 | 98 | 98 | 98 |
| Official | 97 | 98 | 99 | 98 | 98 | 98 | 98 | 98 | 98 | 98 | 98 | 98 | 98 |
| Administrative | NA | 100 | 100 | 98 | 98 | 94 | 97 | 94 | 98 | 98 | 98 | 98 | 98 |
| Survey | NA | NA | NA | NA | NA | NA | NA | NA | NA | NA | NA | NA | NA |

Bulgaria - DTP1



| | 1997 | 1998 | 1999 | 2000 | 2001 | 2002 | 2003 | 2004 | 2005 | 2006 | 2007 | 2008 | 2009 |
|----------------|------|------|------|------|------|------|------|------|------|------|------|------|------|
| Estimate | 97 | 97 | 97 | 97 | 97 | 97 | 98 | 97 | 99 | 99 | 98 | 99 | 98 |
| Reported | NA | NA | NA | 95 | 95 | 90 | 96 | 95 | 97 | 97 | 96 | 97 | 96 |
| Official | NA | NA | NA | 95 | 95 | NA | NA | 95 | 97 | 97 | 96 | 97 | 96 |
| Administrative | NA | NA | NA | NA | 95 | 90 | 96 | 93 | 97 | 97 | 96 | 97 | 96 |
| Survey | NA | NA | NA | NA | NA | NA | NA | NA | NA | NA | NA | NA | NA |

Description:

1997: Legacy estimate.

1998: Estimate calibrated to 1997 level (97 percent) and reported coverage (95 percent).

1999: Estimate calibrated to 1997 level (97 percent) and reported coverage (95 percent).

2000: Estimate calibrated to 1997 level (97 percent) and reported coverage (95 percent).

2001: Estimate calibrated to 1997 level (97 percent) and reported coverage (95 percent).

2002: Estimated DTP3 greater than estimated DTP1; DTP1 estimate based on the relationship between DTP1 and DTP3 from 282 surveys.

2003: Estimate calibrated to 1997 level (97 percent) and reported coverage (96 percent).

2004: Estimate calibrated to 1997 level (97 percent) and reported coverage (95 percent).

2005: Estimate calibrated to 1997 level (97 percent) and reported coverage (97 percent).

2006: Estimate calibrated to 1997 level (97 percent) and reported coverage (97 percent).

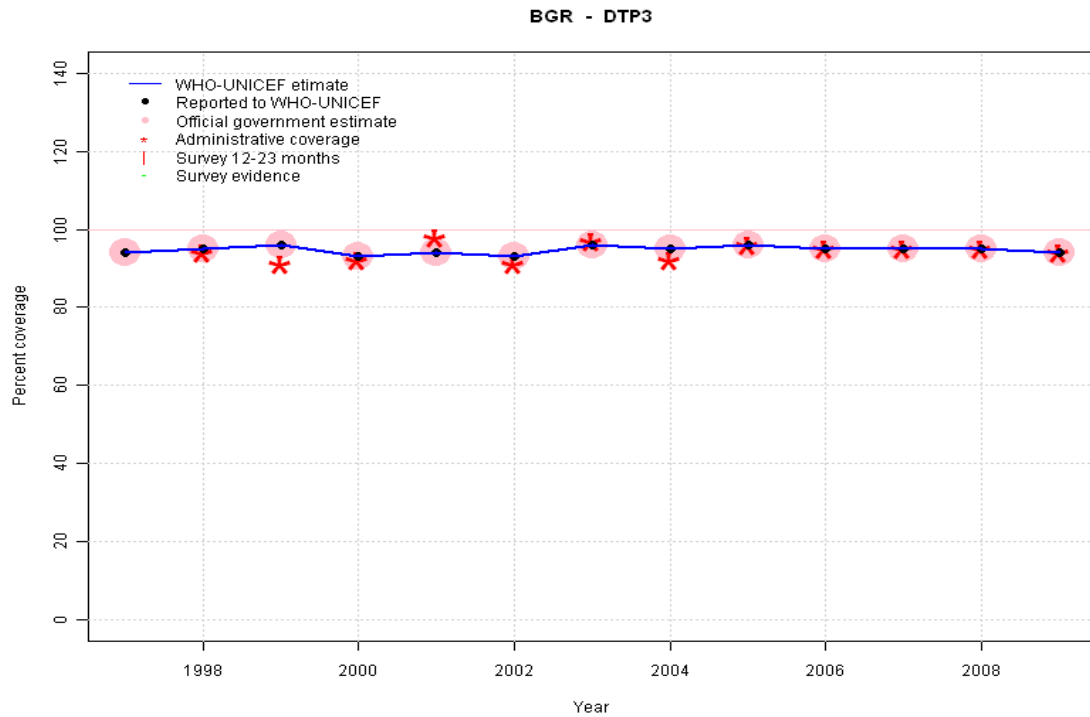
2007: Estimate calibrated to 1997 level (97 percent) and reported coverage (96 percent).

2008: Estimate calibrated to 1997 level (97 percent) and reported coverage (97 percent).

2009: Estimate calibrated to 1997 level (97 percent) and reported coverage (96 percent).

Bulgaria - DTP3

Description:

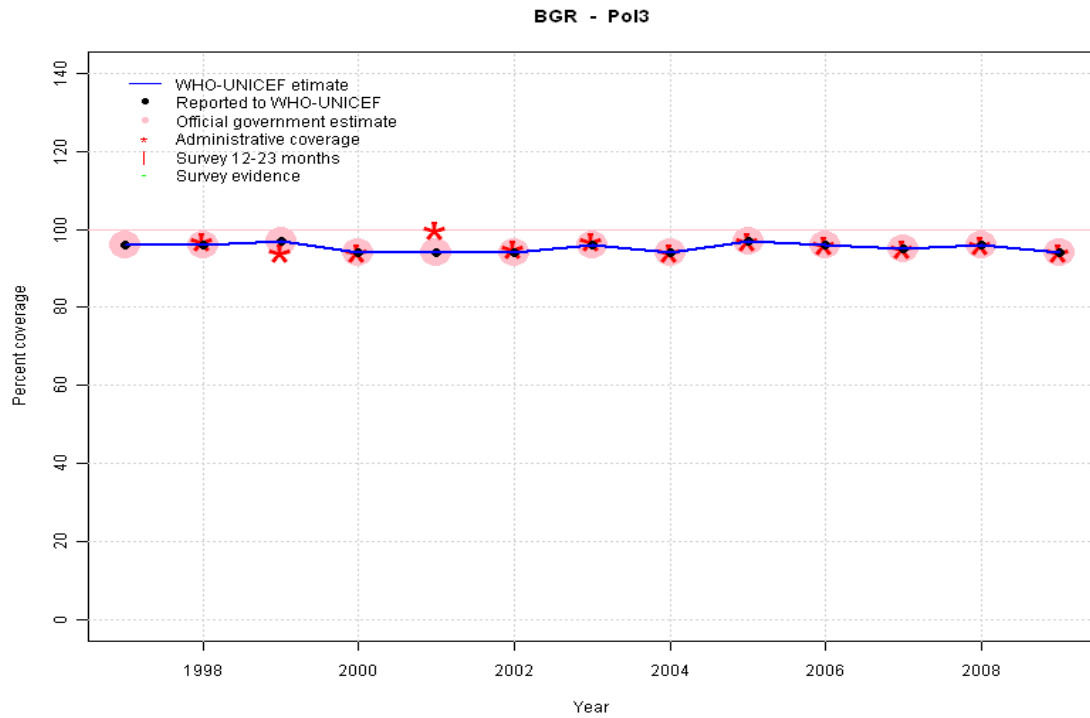


1997: Legacy estimate.
 1998: Estimate based on reported data.
 1999: Estimate based on reported data.
 2000: Estimate based on reported data.
 2001: Estimate based on reported data.
 2002: Estimate based on reported data.
 2003: Estimate based on reported data.
 2004: Estimate based on reported data.
 2005: Estimate based on reported data.
 2006: Estimate based on reported data.
 2007: Estimate based on reported data.
 2008: Estimate based on reported data.
 2009: Estimate based on reported data.

| | 1997 | 1998 | 1999 | 2000 | 2001 | 2002 | 2003 | 2004 | 2005 | 2006 | 2007 | 2008 | 2009 |
|----------------|------|------|------|------|------|------|------|------|------|------|------|------|------|
| Estimate | 94 | 95 | 96 | 93 | 94 | 93 | 96 | 95 | 96 | 95 | 95 | 95 | 94 |
| Reported | 94 | 95 | 96 | 93 | 94 | 93 | 96 | 95 | 96 | 95 | 95 | 95 | 94 |
| Official | 94 | 95 | 96 | 93 | 94 | 93 | 96 | 95 | 96 | 95 | 95 | 95 | 94 |
| Administrative | NA | 94 | 91 | 92 | 98 | 91 | 97 | 92 | 96 | 95 | 95 | 95 | 94 |
| Survey | NA | NA | NA | NA | NA | NA | NA | NA | NA | NA | NA | NA | NA |

Bulgaria - Pol3

Description:

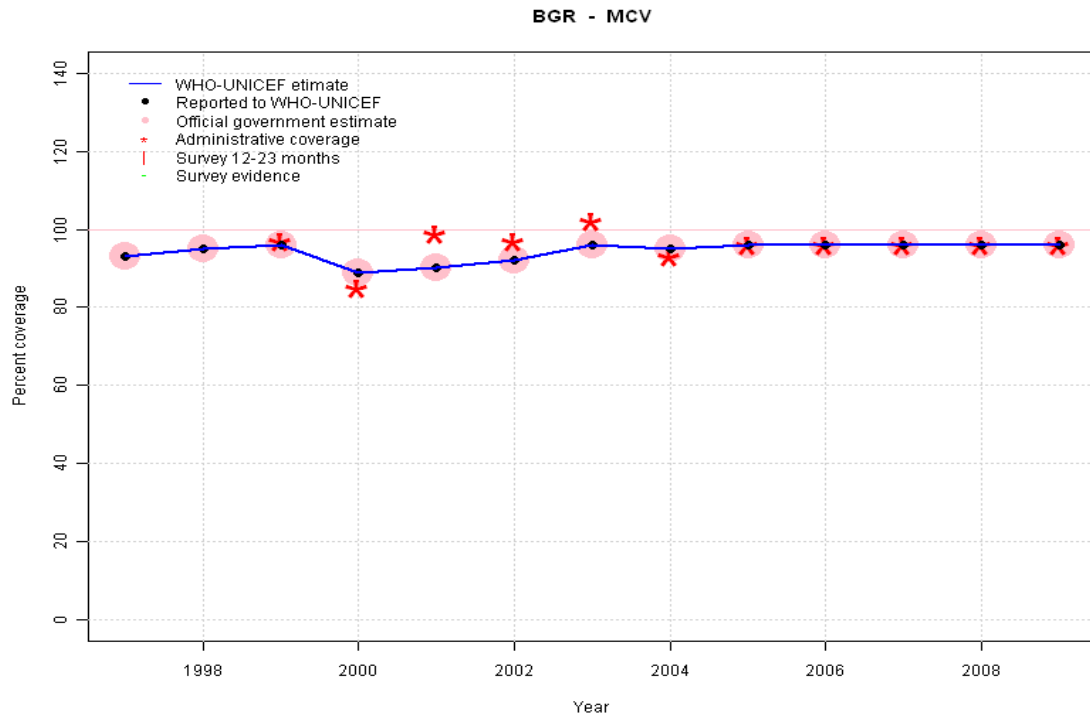


1997: Legacy estimate.
 1998: Estimate based on reported data.
 1999: Estimate based on reported data.
 2000: Estimate based on reported data.
 2001: Estimate based on reported data.
 2002: Estimate based on reported data.
 2003: Estimate based on reported data.
 2004: Estimate based on reported data.
 2005: Estimate based on reported data.
 2006: Estimate based on reported data.
 2007: Estimate based on reported data.
 2008: Estimate based on reported data.
 2009: Estimate based on reported data.

| | 1997 | 1998 | 1999 | 2000 | 2001 | 2002 | 2003 | 2004 | 2005 | 2006 | 2007 | 2008 | 2009 |
|----------------|------|------|------|------|------|------|------|------|------|------|------|------|------|
| Estimate | 96 | 96 | 97 | 94 | 94 | 94 | 96 | 94 | 97 | 96 | 95 | 96 | 94 |
| Reported | 96 | 96 | 97 | 94 | 94 | 94 | 96 | 94 | 97 | 96 | 95 | 96 | 94 |
| Official | 96 | 96 | 97 | 94 | 94 | 94 | 96 | 94 | 97 | 96 | 95 | 96 | 94 |
| Administrative | NA | 97 | 94 | 94 | 100 | 95 | 97 | 94 | 97 | 96 | 95 | 96 | 94 |
| Survey | NA | NA | NA | NA | NA | NA | NA | NA | NA | NA | NA | NA | NA |

Bulgaria - MCV

Description:

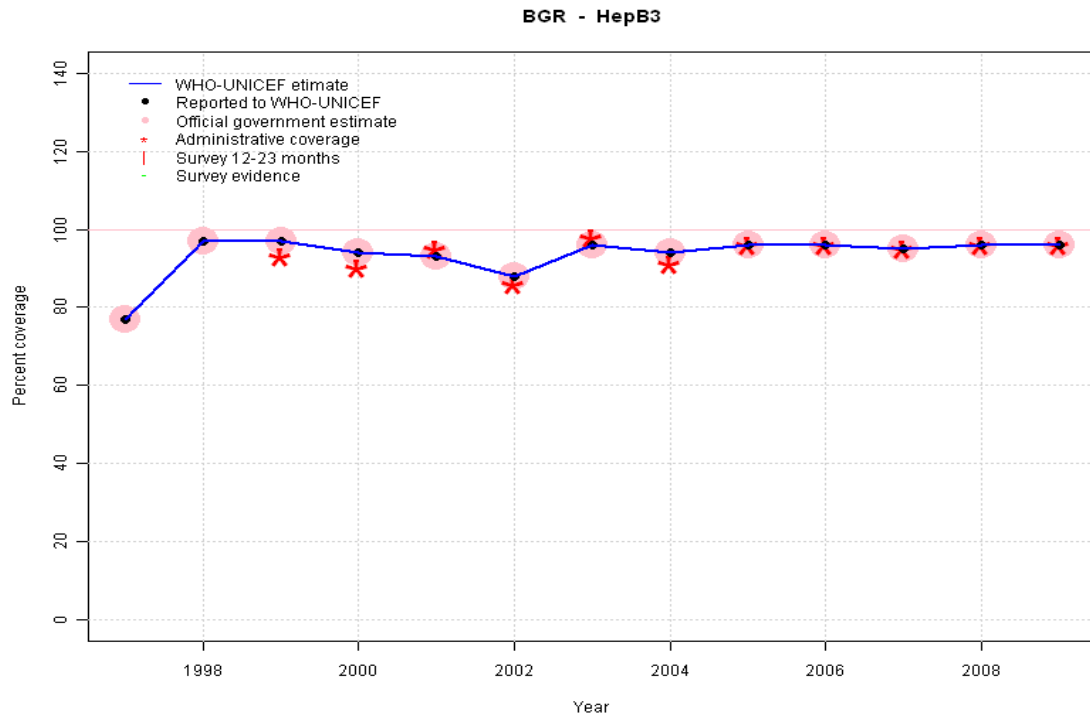


1997: Legacy estimate.
 1998: Estimate based on reported data.
 1999: Estimate based on reported data.
 2000: Estimate based on reported data.
 2001: Estimate based on reported data.
 2002: Estimate based on reported data.
 2003: Estimate based on reported data.
 2004: Estimate based on reported data.
 2005: Estimate based on reported data.
 2006: Estimate based on reported data.
 2007: Estimate based on reported data.
 2008: Estimate based on reported data.
 2009: Estimate based on reported data.

| | 1997 | 1998 | 1999 | 2000 | 2001 | 2002 | 2003 | 2004 | 2005 | 2006 | 2007 | 2008 | 2009 |
|----------------|------|------|------|------|------|------|------|------|------|------|------|------|------|
| Estimate | 93 | 95 | 96 | 89 | 90 | 92 | 96 | 95 | 96 | 96 | 96 | 96 | 96 |
| Reported | 93 | 95 | 96 | 89 | 90 | 92 | 96 | 95 | 96 | 96 | 96 | 96 | 96 |
| Official | 93 | 95 | 96 | 89 | 90 | 92 | 96 | 95 | 96 | 96 | 96 | 96 | 96 |
| Administrative | NA | NA | 97 | 85 | 99 | 97 | 102 | 93 | 96 | 96 | 96 | 96 | 96 |
| Survey | NA | NA | NA | NA | NA | NA | NA | NA | NA | NA | NA | NA | NA |

Bulgaria - HepB3

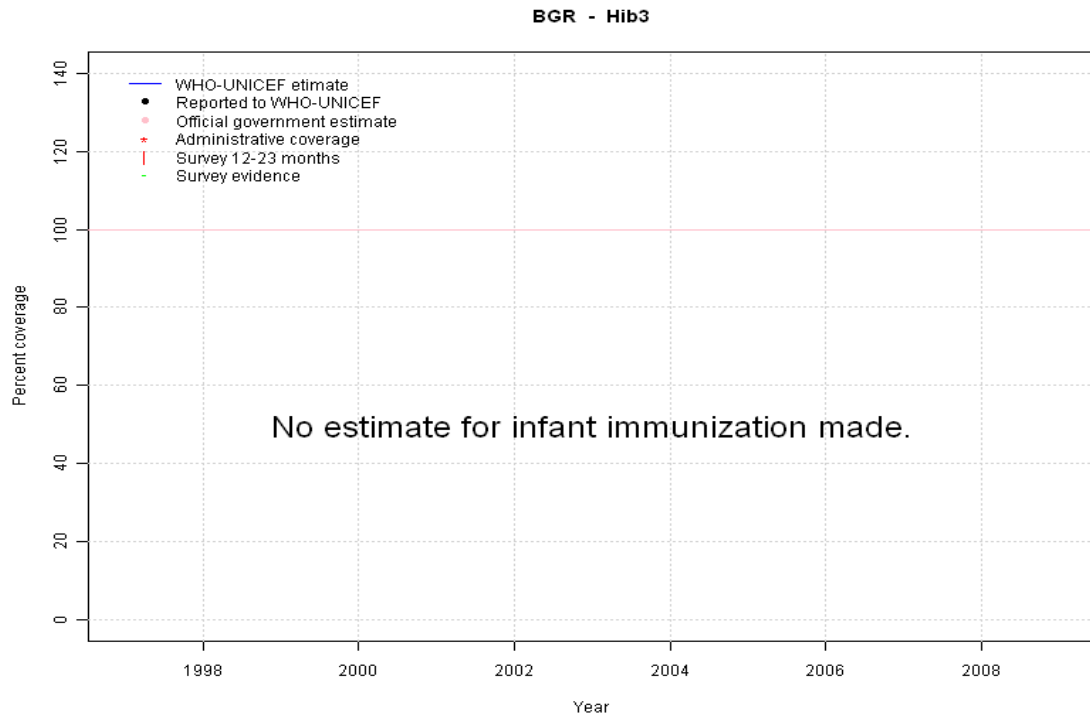
Description:



1997: Legacy estimate.
 1998: Estimate based on reported data.
 1999: Estimate based on reported data.
 2000: Estimate based on reported data.
 2001: Estimate based on reported data.
 2002: Estimate based on reported data.
 2003: Estimate based on reported data.
 2004: Estimate based on reported data.
 2005: Estimate based on reported data.
 2006: Estimate based on reported data.
 2007: Estimate based on reported data.
 2008: Estimate based on reported data.
 2009: Estimate based on reported data.

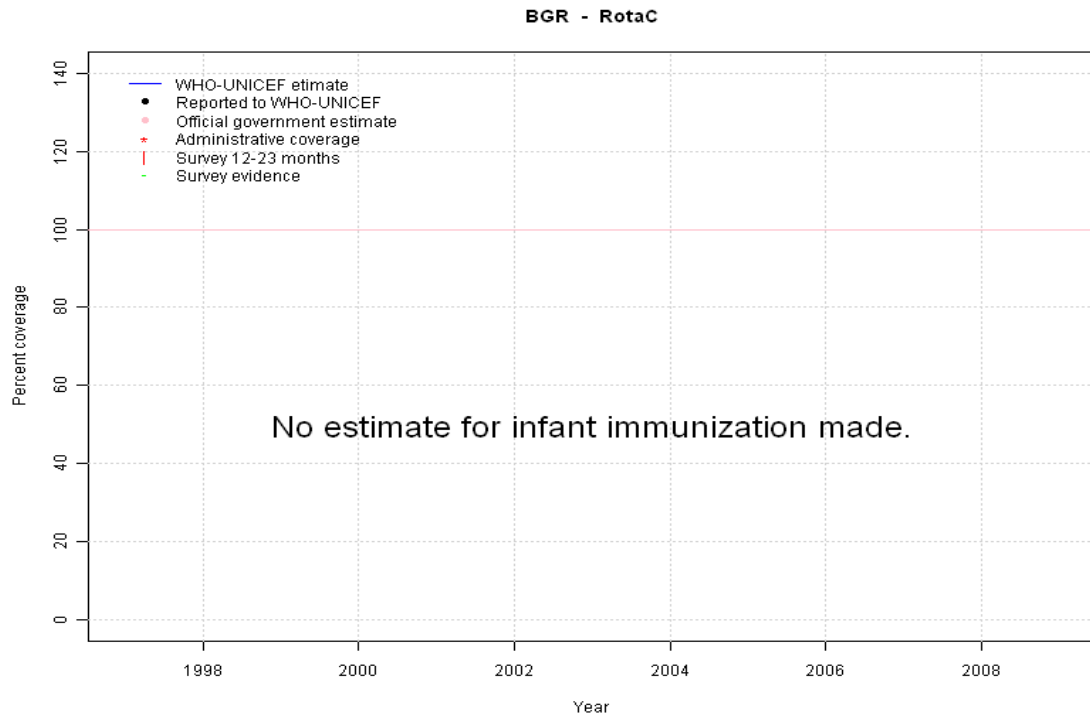
| | 1997 | 1998 | 1999 | 2000 | 2001 | 2002 | 2003 | 2004 | 2005 | 2006 | 2007 | 2008 | 2009 |
|----------------|------|------|------|------|------|------|------|------|------|------|------|------|------|
| Estimate | 77 | 97 | 97 | 94 | 93 | 88 | 96 | 94 | 96 | 96 | 95 | 96 | 96 |
| Reported | 77 | 97 | 97 | 94 | 93 | 88 | 96 | 94 | 96 | 96 | 95 | 96 | 96 |
| Official | 77 | 97 | 97 | 94 | 93 | 88 | 96 | 94 | 96 | 96 | 95 | 96 | 96 |
| Administrative | NA | NA | 93 | 90 | 95 | 86 | 98 | 91 | 96 | 96 | 95 | 96 | 96 |
| Survey | NA | NA | NA | NA | NA | NA | NA | NA | NA | NA | NA | NA | NA |

Bulgaria - Hib3



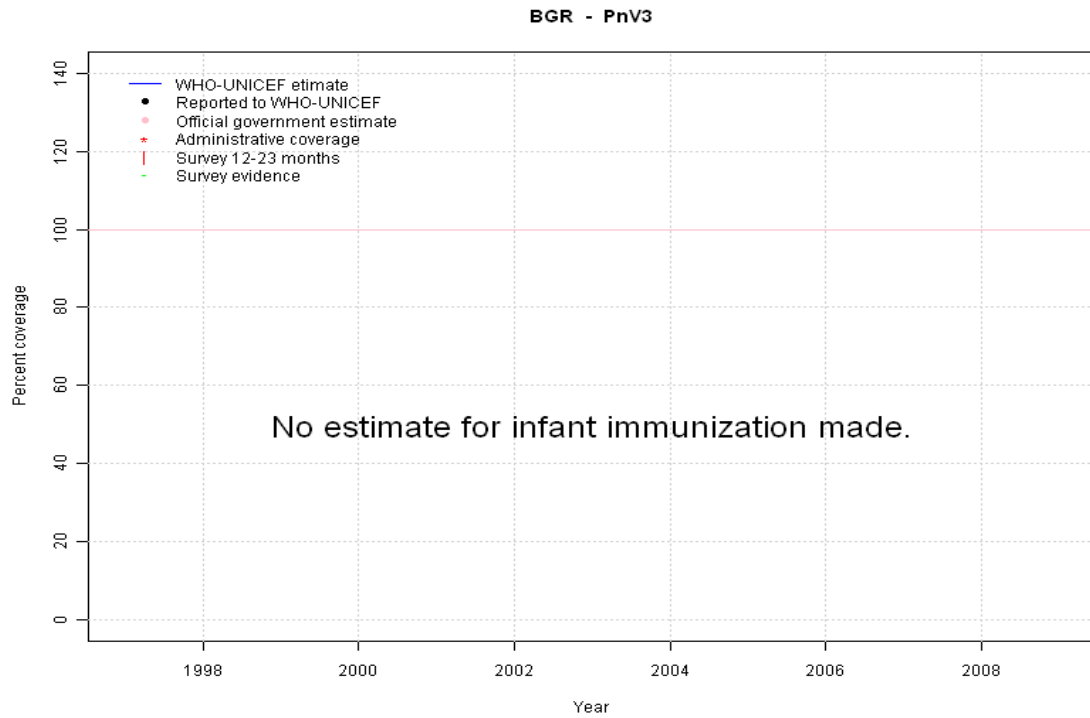
| | 1997 | 1998 | 1999 | 2000 | 2001 | 2002 | 2003 | 2004 | 2005 | 2006 | 2007 | 2008 | 2009 |
|----------------|------|------|------|------|------|------|------|------|------|------|------|------|------|
| Estimate | NA | NA | NA | NA | NA | NA | NA | NA | NA | NA | NA | NA | NA |
| Reported | NA | NA | NA | NA | NA | NA | NA | NA | NA | NA | NA | NA | NA |
| Official | NA | NA | NA | NA | NA | NA | NA | NA | NA | NA | NA | NA | NA |
| Administrative | NA | NA | NA | NA | NA | NA | NA | NA | NA | NA | NA | NA | NA |
| Survey | NA | NA | NA | NA | NA | NA | NA | NA | NA | NA | NA | NA | NA |

Bulgaria - RotaC



| | 1997 | 1998 | 1999 | 2000 | 2001 | 2002 | 2003 | 2004 | 2005 | 2006 | 2007 | 2008 | 2009 |
|----------------|------|------|------|------|------|------|------|------|------|------|------|------|------|
| Estimate | NA | NA | NA | NA | NA | NA | NA | NA | NA | NA | NA | NA | NA |
| Reported | NA | NA | NA | NA | NA | NA | NA | NA | NA | NA | NA | NA | NA |
| Official | NA | NA | NA | NA | NA | NA | NA | NA | NA | NA | NA | NA | NA |
| Administrative | NA | NA | NA | NA | NA | NA | NA | NA | NA | NA | NA | NA | NA |
| Survey | NA | NA | NA | NA | NA | NA | NA | NA | NA | NA | NA | NA | NA |

Bulgaria - PnV3



| | 1997 | 1998 | 1999 | 2000 | 2001 | 2002 | 2003 | 2004 | 2005 | 2006 | 2007 | 2008 | 2009 |
|----------------|------|------|------|------|------|------|------|------|------|------|------|------|------|
| Estimate | NA | NA | NA | NA | NA | NA | NA | NA | NA | NA | NA | NA | NA |
| Reported | NA | NA | NA | NA | NA | NA | NA | NA | NA | NA | NA | NA | NA |
| Official | NA | NA | NA | NA | NA | NA | NA | NA | NA | NA | NA | NA | NA |
| Administrative | NA | NA | NA | NA | NA | NA | NA | NA | NA | NA | NA | NA | NA |
| Survey | NA | NA | NA | NA | NA | NA | NA | NA | NA | NA | NA | NA | NA |

Further information and estimates for 1980-1996 are available at:

http://www.childinfo.org/immunization_countryreports.html

http://www.who.int/immunization_monitoring/routine/immunization_coverage/en/index4.html