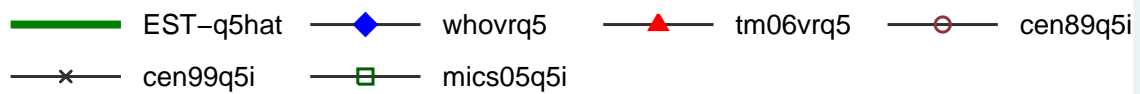
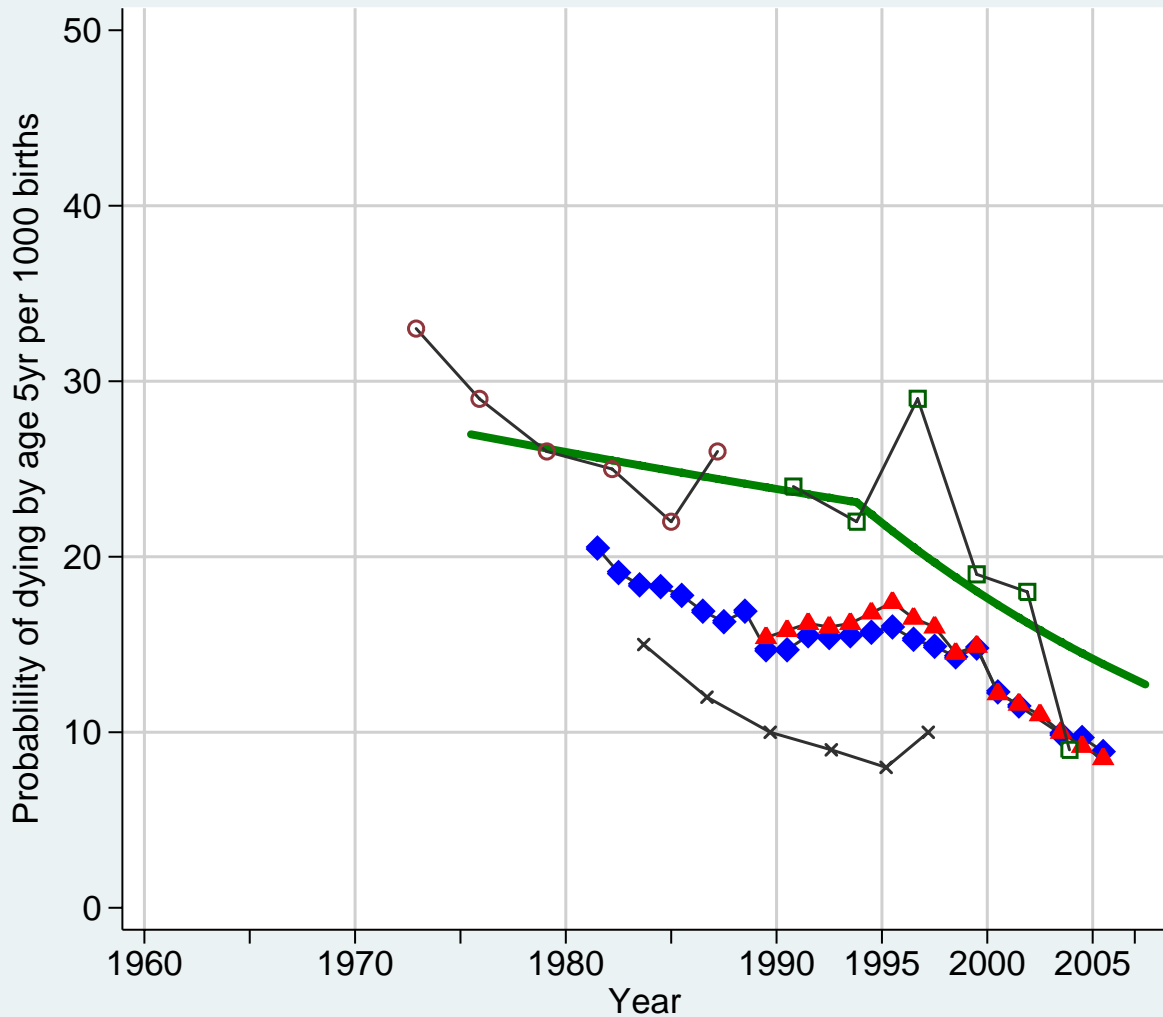


Belarus

Under-5 mortality data and estimated trend

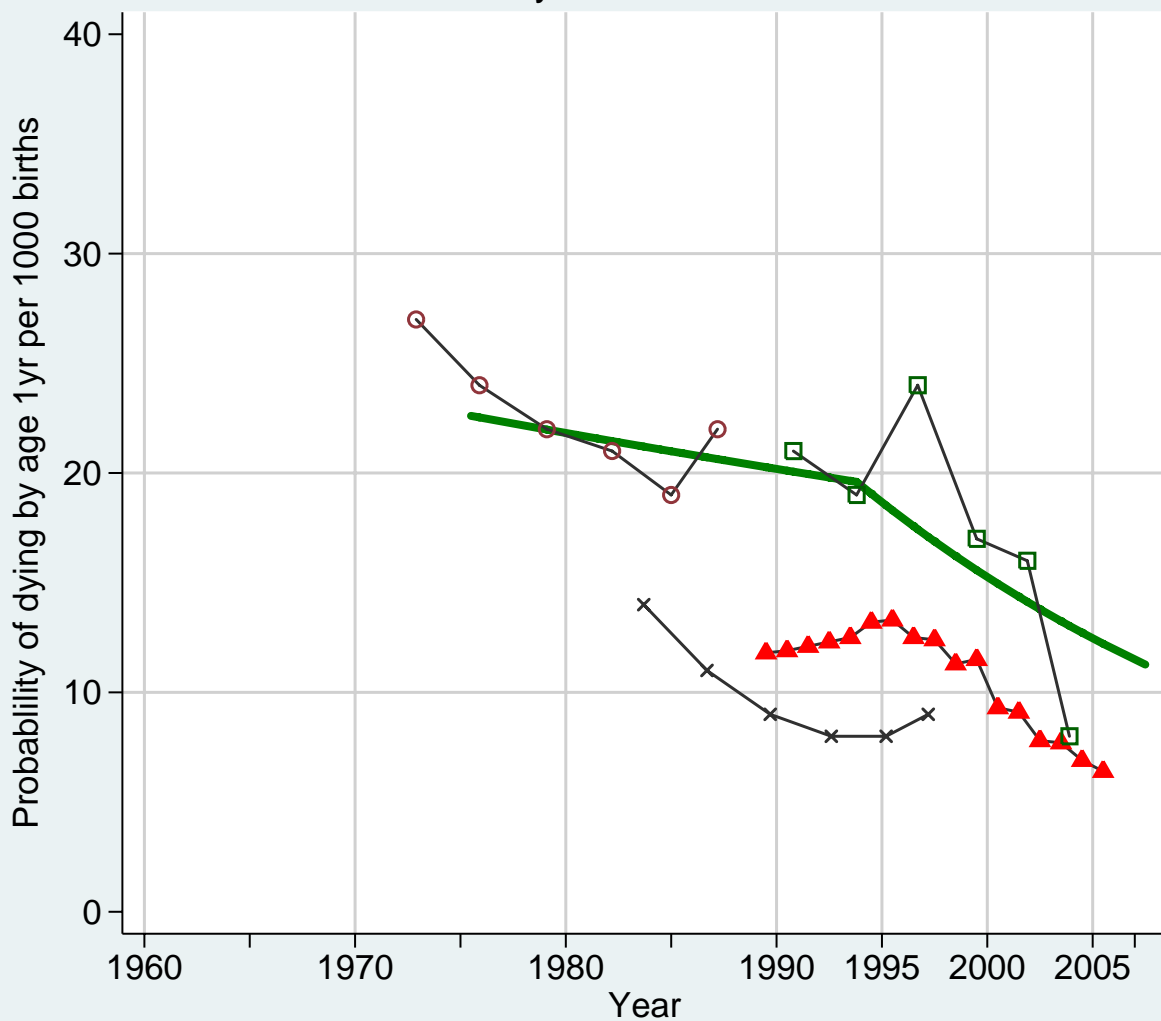


Cen99 with zero weights, VR with 1/4 normal, others with normal weights

2007.5.15 (ebest4)

Belarus

Infant mortality data and estimated trend



— EST-q1hat ▲ tm06vrq1 ○ cen89q1i × cen99q1i
—□— mics05q1i

q1 estimates derived from q5 estimates using Coale–Demeny West LT

2007.5.16 (ebest4)

Belarus child mortality estimates

Final version - 2007.5.15

<u>date</u>	<u>q1hat</u>	<u>q5hat</u>	<u>q1reg</u>
1960.5			
1965.5			
1970.5			
1975.5	22.6	27.0	22.7
1980.5	21.7	25.9	22.1
1985.5	20.9	24.8	21.5
1990.5	20.1	23.8	20.9
1995.5	18.3	21.5	19.0
2000.5	15.0	17.3	15.5
2005.5	12.2	13.9	12.6
2007.5	11.3	12.7	11.6

West LT

Note:

q1hat and q5hat are estimates for q1 and q5 respectively; q1reg are regression estimates before final step.

Belarus data sources

Acronym	Description
whovrq5	WHO vital registration U5MR data
tmvrq1	TransMONEE vital registration IMR data
tmvrq5	TransMONEE vital registration U5MR data
cen89q1i	Census 1989 indirect IMR data
cen89q5i	Census 1989 indirect U5MR data
cen99q1i	Census 1999 indirect IMR data
cen99q5i	Census 1999 indirect U5MR data
mics05q1i	MICS 2005 indirect IMR data
mics05q5i	MICS 2005 indirect U5MR data
IMR	Infant mortality rate
U5MR	Under-5 mortality rate
MICS	Multiple Indicator Cluster Survey

Notes

Using West model life table as appropriate, although no direct evidence to support
Using revised mics05 data, recd as of 15 May 2007