



WHO / UNICEF

**Joint Monitoring Programme
for Water Supply and Sanitation**

**Coverage Estimates
Improved Sanitation**

Updated in July 2008

Bolivia

Urban and Rural Sanitation - Bolivia

DHS 1989		
SANITATION	Urban	Rural
Domestic connection	42.1	3.8
Connection to septic tank	15.7	3.1
Latrine	16.4	15.2
Other	25.8	77.8
Missing information	0.1	0.1
TOTAL	100.0	100.0
50% latrine considered improved	8.2	7.6
% Use of an improved sanitation facility	66%	15%
% Sewerage connections	42%	4%
Open defecation	26%	78%

Source: DHS Bolivia, 1989

DHS 1994		
SANITATION	Urban	Rural
Domestic connection to sewage system	40.6	1.6
Domestic connection to septic tank	13.7	2.5
Latrine with soakaway	19.2	33.0
No facility, brushwood, field	26.0	62.4
No information	0.5	0.6
TOTAL	100.0	100.1
50% of latrine with soakaway considered improved	9.6	16.5
% Use of an improved sanitation facility	64%	21%
% Sewerage connections	41%	2%
Open defecation	26%	62%

Source: DHS Bolivia, 1994

MICS 1996		
SANITATION	Urban	Rural
Toilet with connection to sewage system	52.5	1.4
Toilet with septic tank	20.8	3.9
Pit latrine	11.0	32.9
No facility	10.7	58.1
Other	5.0	3.6
Missing information	0.0	0.1
TOTAL	100.0	100.0
50% of pit latrine considered improved	5.5	16.5
ratio sewerage/sewerage plus septic tank	0.72	0.26
% Use of an improved sanitation facility	79%	22%
% Sewerage connections	53%	1%
Open defecation	11%	58%

Source: Ministry of Human Dev., National Epidemiology Office under UNICEF, Bolivia MICS 1996

Survey

DHS		1998	
Proportion shared improved facilities/all improved facilities		0.29	0.13
SANITATION	Urban	Rural	
Private flush toilet	34.8	1.9	
Shared flush toilet	9.9	0.5	
Private/ shared	0.4	0.0	
Private latrine	20.6	28.9	
Shared latrine	16.3	3.7	
Private / shared latrine	0.3	0.3	
No facility	17.6	64.5	
Missing information	0.1	0.2	
TOTAL	100.0	100.0	
50% of latrine considered improved	18.6	16.5	
Estimated sewerage based on MICS96	32.3	0.6	
Access to improved sanitation	64%	19%	
% Sewerage connections	32%	1%	
Open defecation	18%	65%	

Source: DHS Bolivia, 1998

MICS		2000	
SANITATION	Urban	Rural	
Sanitario con sistema de alcantarillado o pozo septico	68.8	8.9	
Letrina con agua fluida	6.7	1.0	
Letrina mejorada/ ecologica (VIP)	2.9	1.9	
Letrina tradicional	11.7	31.2	
Bacin	0.4	0.0	
No tiene sanitario, o matorral o campo	6.7	52.6	
Otro	2.8	4.3	
TOTAL	100.0	99.9	
50% of latrina traditional considered improved	5.9	15.6	
Estimated sewerage based on DHS03	56.9	3.7	
Access to improved sanitation	84%	27%	
% Sewerage connections	57%	4%	
Open defecation	7%	53%	

Source: Encuesta de multiples indicadores por conglomerados 2000 (MICS 2000), La Paz, Informe preliminar, febrero 2001

DHS		2003	
SANITATION	Urban	Rural	
Alcantarillado	49.0	2.6	
Cámara séptica	10.2	3.7	
Pozo ciego	22.9	33.6	
No tiene servicio sanitario	17.7	60.1	
Sin información	0.2	0.1	
TOTAL	100.0	100.1	
50% of pozo ciego considered improved	11.5	16.8	
ratio sewerage/sewerage plus septic tank	0.83	0.41	
% Use of an improved sanitation facility	71%	23%	
% Sewerage connections	49%	3%	
Open defecation	18%	60%	

Source: Bolivia Demographic and Health Survey 2003.

Urban and Rural Sanitation - Bolivia

Census

Census	1992	
(Population in thousands)		
SANITATION	Urban	Rural
Conexion al alcantarillado	1310	25
Conexion a camara septica	458	59
Insufficient information (no info on latrines) to calculate population with access to improved sanitation		
Ninguno {none}	1343	2211
Otro	504	384
Total population	3111	2295
% Use of an improved sanitation facility	57%	4%
% Sewerage connections	42%	1%
Open defecation	43%	96%

CENSUS	2002	
(Population in thousands)		
SANITATION	Urban	Rural
Alcantarillado	48.2	1.9
Camera septica	13.2	4.2
A pozo ciego	22.3	29.0
No tiene bano	15.4	63.7
A la superficie	0.9	1.1
TOTAL	100.0	99.9
50% of pozo ciego considered improved	11.2	14.5
% Use of an improved sanitation facility	73%	21%
% Sewerage connections	48%	2%
Open defecation	15%	64%

Source: Encuesta de Hogares, 2002

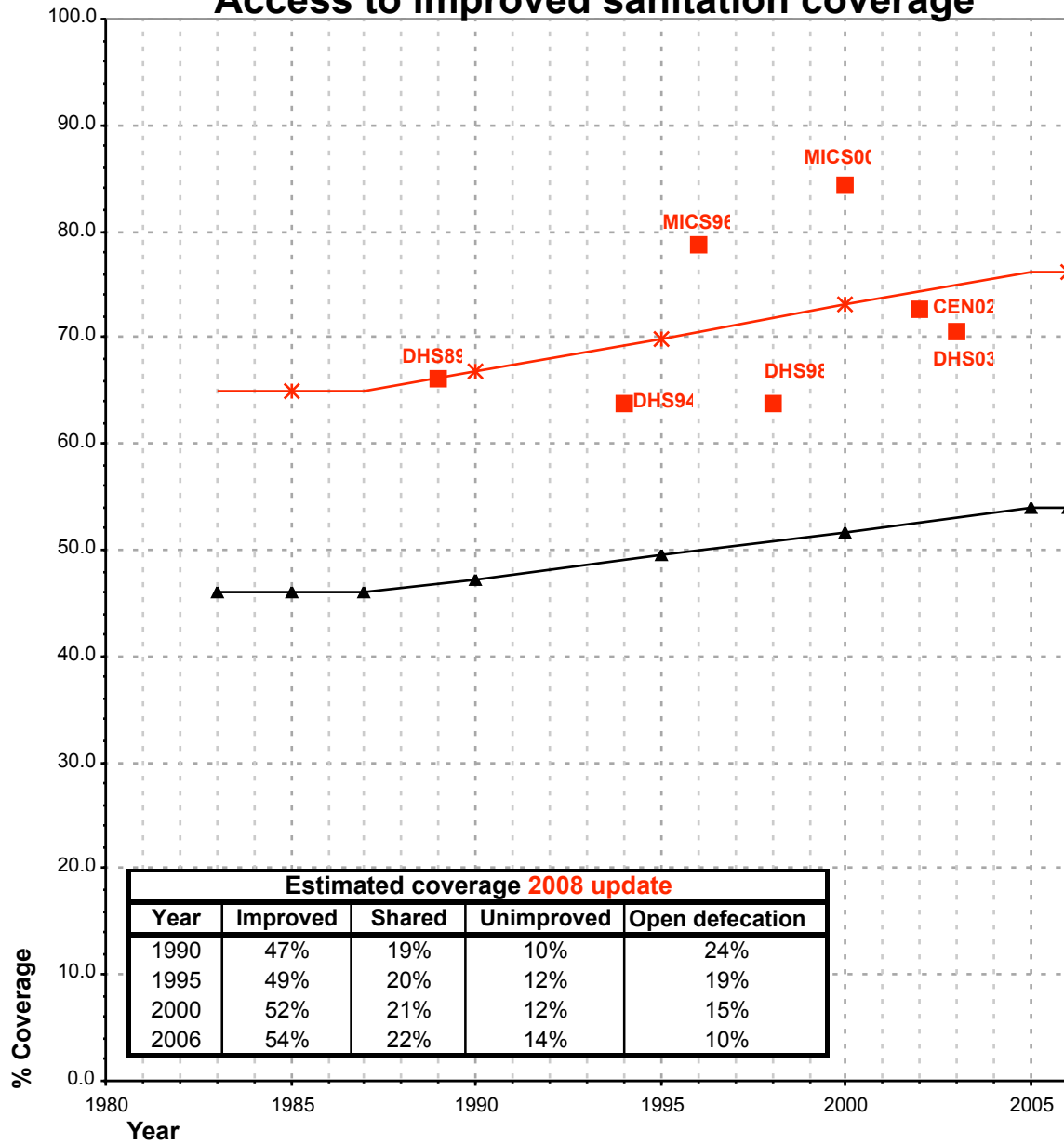
Estimate

FORM6/WHO	1999	
(Population in thousands)		
SANITATION	Urban	Rural
Population served with household connections to conventional sewers	2151	76
Population without household connections but served with adequate, private or shared on-site system	1774	1046
Total population served	3925	1122
Total population unserved	845	2058
Total population	4770	3180
% Use of an improved sanitation facility	82%	35%
% Sewerage connections	45%	2%

Source: Global Water Supply and Sanitation Assessment 2000. Water Supply and Sanitation Sector Questionnaire - 1999. (Form 6 sent to WHO)

Bolivia			SANITATION										OPEN DEFECACTION			
			URBAN				RURAL									
			HC		Total		HC		Total		Urban		Rural			
Source	Code	Year	Used for estimates	Not used for estimates	Used for estimates	Not used for estimates	Used for estimates	Not used for estimates	Used for estimates	Not used for estimates	Used for estimates	Not used for estimates	Used for estimates	Not used for estimates		
The International Drinking Water Supply and Sanitation Decade. Review of National Baseline Data (as at December 1980). WHO 1984	WHO80	1980		23.0		37.0				4.0						
The International Drinking Water Supply and Sanitation Decade. Review of National Progress (as at December 1983). WHO 1986.	WHO83	1983		28.0		40.0				9.0						
The International Drinking Water Supply and Sanitation Decade. Review of Mid-Decade Progress (as at December 1985). WHO 1987.	WHO85	1985		31.0		51.0				22.0						
The International Drinking Water Supply and Sanitation Decade. Review of National Progress (as at December 1988). WHO 1990.	WHO88	1988		40.0		55.0				13.0						
Demographic and Health Survey, 1989.	DHS89	1989	42.1		66.0		3.8		14.5		25.8		77.8			
The International Drinking Water Supply and Sanitation Decade. End of Decade Review (as at December 1990). WHO1992.	WHO90	1990				38.0				14.0						
Water Supply and Sanitation Sector Monitoring Report 1993 (Sector Status as of 31 December 1991)	JMP93	1991				40.0				13.0						
Census 1992	CEN92	1992	42.1				1.1					43.2		96.3		
Water Supply and Sanitation Sector Monitoring Report - 1996. Sector Status as of 31 December 1994. WHO/UNICEF 1996.	JMP96	1994				58.0				16.0						
Demographic and Health Survey, 1994	DHS94	1994	40.6		63.9		1.6		20.6		26.0		62.4			
Ministry of Human Development, National Epidemiology Directorate under UNICEF, Bolivia MICS 1996	MICS96	1996	52.5		78.8		1.4		21.8		10.7		58.1			
Demographic and Health Survey, 1996	DHS98	1998			63.7				18.9		17.6		64.5			
Global Water Supply and Sanitation Assessment 2000. Water Supply and Sanitation Sector Questionnaire - 1999. (Form 6 sent to WHO)	JMP99	1998		45.1		82.0		2.4		35.0						
Encuesta de multiples indicadores por conglomerados 2000 (MICS 2000), La Paz, Informe preliminar, febrero 2001	MICS00	2000	56.9		84.3		3.7		27.4		6.7		52.6			
Bolivia Demographic and Health Survey 2003.	DHS03	2003	49.0		70.7		2.6		23.1		17.7		60.1			
Encuesta de Hogares, 2002	CEN02	2002	48.2		72.6		1.9		20.6		15.4		63.7			

Bolivia - urban - Access to improved sanitation coverage



Improved plus shared

Improved

■ Used for estimates

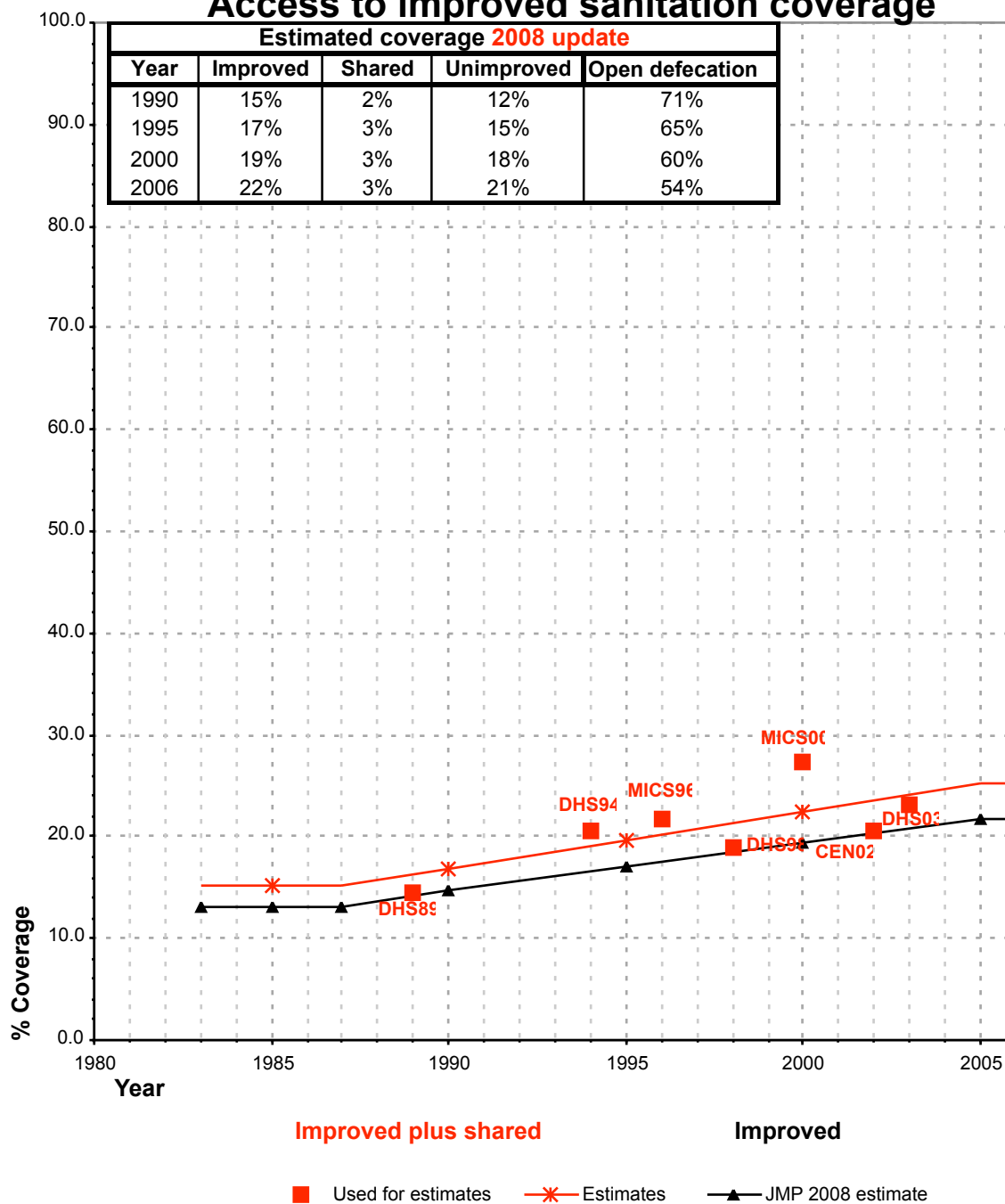
✱ Estimates

▲ JMP 2008 estimate

Shared facilities :

The proportion of the population using a shared improved sanitation facility is based on the DHS98

Bolivia - rural - Access to improved sanitation coverage



Shared facilities :
The proportion of the population using a shared improved sanitation facility is based on the DHS98