



**WHO / UNICEF**

**Joint Monitoring Programme  
for Water Supply and Sanitation**

Coverage Estimates

**Improved Drinking Water**

Updated in July 2008

---

**Bangladesh**

---

## Urban and Rural Water - Bangladesh

DHS 1994				MICS 1994				1995	
Water	Urban	Rural	Total	Water	Urban	Rural	Total	Rural	Total
Piped into residence	26.7	0.3	3.3	Tubewell	64.2	93.3	90.4	92.7	89.8
Piped outside residence	10.1	0.2	1.3	Tap	35.8	0.2	3.8	0.2	3.7
Tube well	62.0	91.0	87.7	Ringwell	0.1	3.4	3.1	3.8	3.4
Surface well/Other well	0.8	4.4	4.0	Other	0.6	3.6	3.3	3.6	3.3
River/stream	0.1	0.8	0.7	<b>Total</b>	<b>101</b>	<b>101</b>	<b>101</b>	<b>100</b>	<b>100</b>
Pond/lake	0.4	3.1	2.8	50% - Ringwell	0.1	1.7	1.6	1.9	1.7
Other	0.0	0.1	0.1	Estimation of non contaminated wells (20% wells)	51.4	76.0	73.6	75.7	73.2
Missing/DK	0.0	0.1	0.1	Access to improved drinking water source - Deduct. of arsenic contaminated	87%	76%	77%	76%	77%
<b>Total</b>	<b>100</b>	<b>100</b>	<b>100</b>	Estimated house connections	26%	0%		0%	
50% - Surface well	0.4	2.2	2.0						
Ratio of piped into residence	0.73	0.60	0.72						
Estimation of non contaminated wells (20% wells)	49.9	74.6	71.8						
Access to improved drinking water source - Deduct. of arsenic contaminated	87%	75%	76%						
% House connections	27%	0%	3%						

<b>MICS</b>			
<b>1996</b>			
<b>Water</b>	<b>Urban</b>	<b>Rural</b>	<b>Total</b>
Tubewell	64.5	94.9	91.9
Tap	36.2	0.5	4.1
Ringwell	0.5	2.7	2.5
Other	0.8	3.6	3.3
<b>Total</b>	<b>102</b>	<b>102</b>	<b>102</b>
50% - Ringwell	0.3	1.4	1.3
Estimation of non contaminated wells (20% wells)	51.8	77.0	74.5
Access to improved drinking water source - Deduct. of arsenic contaminated	88%	78%	79%
Estimated house connections	30%	0%	

<b>DHS</b>			
<b>1997</b>			
<b>Water</b>	<b>Urban</b>	<b>Rural</b>	<b>Total</b>
Piped into residence	32.1	0.4	4
Piped outside residence	7.1	0.3	1.1
Tube well	60	94	90.2
Surface well	0.2	2.2	2
Pond/lake	0.4	2.3	2.1
River/stream	0.1	0.5	0.5
Other	0.1	0.2	0.2
<b>Total</b>	<b>100</b>	<b>99.9</b>	<b>100.1</b>
50% - Surface well improved	0.1	1.1	1
Ratio of piped into residence	0.82	0.57	0.78
Estimation of non contaminated wells (20% all wells)	48.1	76.1	73.0
Access to improved drinking water source - Deduct. 20% arsenic contaminated wells	87%	77%	78%
% House connections	32%	0%	4%

## Survey

Bangladesh - SVRS - 98		
Water	Urban	Rural
House connection	9013	6945
Public standpipe	5846	0
Tubewell	19384	81303
Pucca well	278	1018
Kutcha well	69	1574
Others	209	1760
<b>Total</b>	<b>34799</b>	<b>92600</b>
50% - Kutcha well improved	35	787
Estimation of non contaminated wells (20% of wells)	15757.2	66486.4
Access to improved drinking water source - Deduct. of 20% arsenic contaminated wells	88%	79%
% House connections	26%	8%

MICS 1999			
Water	Urban	Rural	Total
Tubewell/Tap/Ringwell	99.6	97.7	97.9
Pond/ River/ Other	0.5	3.3	3.0
<b>NB: Multiple responses were possible</b>			
<b>Total</b>	<b>100.1</b>	<b>101</b>	<b>101</b>
50% - Ringwell based on MICS96	0.3	1.4	1.3
Tubewell/Tap/Ringwell minus 50% Ringwell	99.4	96.4	96.7
access to improved drinking water source (incl. 50% Ringwell)	99%	96%	97%

Progotir Pathey		2000		
Water	Urban	Rural	Total	
Tubewell/Tap/Ringwell	99.5	97.3	97.5	
Pond/ River/ Other	0.5	3.3	3.0	
<b>NB: Multiple responses were possible</b>				
<b>Total</b>	<b>100</b>	<b>101</b>	<b>101</b>	
50% - Ringwell based on MICS	96.0	0.0	0.0	
Tubewell/Tap/Ringwell minus 50% Ringwell	99.5	97.3	97.5	
access to improved drinking water source (incl. 50% Ringwell)	100%	97%	98%	

DHS	
Water	
Piped into residence	
Piped outside residence	
Tube well	
Surface well	
Pond/lake	
River/stream	
Other	
<b>Total</b>	
Estimation of protected surface wells based on WHS03	
Estimation of non contaminated wells (-20% of all wells)	
Access to improved drinking water source - Deduct. of 20% arsenic contaminated wells	
<b>% House connections</b>	

Source: Bangladesh Demographic and Health Survey 2000

<b>WHS</b>		<b>2003</b>	
<b>WATER</b>	<b>Urban</b>	<b>Rural</b>	
Piped water through house connection or yard	25.3	0.6	
Public standpipe	7.2	0.5	
Protected tube well or bore hole	66.7	93.2	
Protected dug well or protected spring	0.7	2.1	
Rainwater (into tank or cistern )	0.0	0.1	
Unprotected dug well or spring	0.1	0.9	
Water taken directly from pond-water or stream	0.1	2.6	
<b>TOTAL</b>	<b>100.0</b>	<b>100.0</b>	
Ratio of protected /dug wells and springs	0.91	0.70	
Ratio of protected /all wells and springs	1.00	0.99	
Estimation of non contaminated wells (-20% of all wells)	53.9	76.2	
Access to improved drinking water source - Deduct. of 20% arsenic contaminated wells	<b>86%</b>	<b>77%</b>	
<b>% House connections</b>	<b>25%</b>	<b>1%</b>	

Source: World Health Survey, WHO, 2003.

<b>DHS</b>	
<b>WATER</b>	<b>Urban</b>
Piped inside dwelling	23.3
Piped outside dwelling	7.8
Tubewell	65.5
Deep tubewell	2.4
Shallow tubewell	0.1
Surface well/other well	0.1
Pond/tank/lake	0.8
River/stream	0.1
<b>TOTAL</b>	<b>100.1</b>
50% - Surface well	0.1
Estimation of non contaminated wells (Deduct. of 20% of all wells)	54.8
Access to improved drinking water source - Deduct. of 20% arsenic contaminated wells	<b>86%</b>
<b>% House connections</b>	<b>23%</b>

Source: Bangladesh Demographic and Health Survey 2004

--

MICS		2006	
WATER	Urban	Rural	
Piped into dwelling	14.3	0.1	
Piped into yard or plot	8.1	0.2	
Public tap/standpipe	5.0	0.3	
Tubewell/borehole	71.5	95.6	
Protected well	0.1	0.6	
Protected spring	0.0	0.1	
Rainwater collection	0.0	0.1	
Unprotected well	0.0	0.6	
Unprotected spring	0.0	0.2	
Surface water	0.5	2.2	
Bottled water	0.0	0.0	
Other	0.2	0.1	
Missing	0.0	0.0	
TOTAL	99.7	100.1	
50% - Surface well	0.1	0.4	
Estimation of non contaminated wells (Deduct. of 20% of all wells)	62.2	76.8	
Access to improved drinking water source (Deduct. of 20% arsenic contaminated wells)	85%	78%	
% House connections	14%	0%	

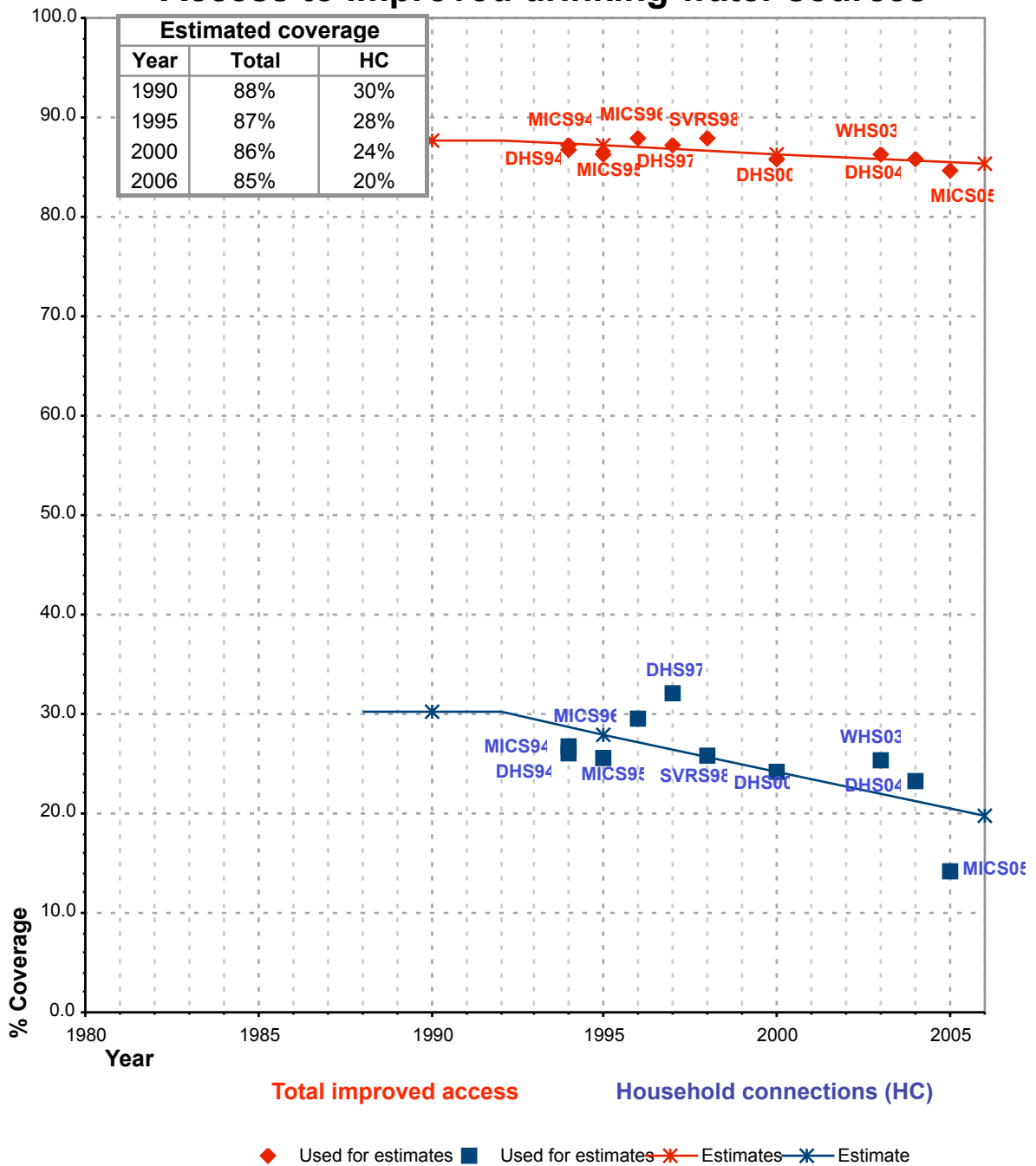
Source: Bangladesh Multiple Cluster Indicator Survey (MICS)

Estimate		
----------	--	--

FORM-6/WHO	1999	
Water	Urban	Rural
Population in millions		
Population served with household connection	9.95	0
Population without household connection but with reasonable access to a public water point	24.17	89.45
Total population served	34.12	89.45
Total population unserved	0.68	3.15
Total population	34.8	92.6
access to improved drinking water source	98%	97%
% House connections	29%	0%

Bangladesh			DRINKING WATER							
			URBAN				RURAL			
			HC		Total		HC		Total	
Source	Code	Year	Used for estimates	Not used for estimates	Used for estimates	Not used for estimates	Used for estimates	Not used for estimates	Used for estimates	Not used for estimates
The International Drinking Water Supply and Sanitation Decade. Review of National Baseline Data (as at December 1980). WHO 1984	WHO80	1980				26.0				40.0
The International Drinking Water Supply and Sanitation Decade. Review of National Progress (as at December 1983). WHO 1986.	WHO83	1983		23.0		29.0				43.0
The International Drinking Water Supply and Sanitation Decade. Review of National Progress (as at December 1988). WHO 1990.	WHO88	1988		11.0		37.0				89.0
The International Drinking Water Supply and Sanitation Decade. End of Decade Review (as at December 1990). WHO1992.	WHO90	1990		31.0		39.0				89.0
Water Supply and Sanitation Sector Monitoring Report 1993 (Sector Status as of 31 December 1991)	JMP93	1991				82.0				81.0
Demographic and Health Survey, Bangladesh, 1994	DHS94	1994	26.7		86.7		0.3		75.1	
Multi-Indicator Cluster Survey, 1994, Bangladesh	MICS94	1994	26.0		87.2		0.1		76.2	
Water Supply and Sanitation Sector Monitoring Report - 1996. Sector Status as of 31 December 1994. WHO/UNICEF 1996.	JMP96	1994				100.0				97.0
Multi-Indicator Cluster Survey, 1995, Bangladesh	MICS95	1995	25.5		86.4		0.1		75.9	
Multi-Indicator Cluster Survey, 1996, Bangladesh	MICS96	1996	29.6		88.0		0.3		77.5	
Demographic and Health Survey, Bangladesh, 1997	DHS97	1997	32.1		87.3		0.4		76.8	
	SVRS98	1998	25.9		88.0			7.5	79.3	
Global Water Supply and Sanitation Assessment 2000. Water Supply and Sanitation Sector Questionnaire - 1999. (Form 6 sent to WHO)	JMP99	1999		28.6		98.0		0.0		97.0
Multi-Indicator Cluster Survey, 1999, Bangladesh Burea of Statistics & UNICEF	MICS99	1999				99.4				96.4
Progotir Pathay, 2000, Bangladesh Burea of Statistics & UNICEF	PP00	2000				100.0				96.0
Bangladesh Demographic and Health Survey 2000.	DHS00	2000	24.2		85.7		0.1		77.2	
World Health Survey, WHO, 2003	WHS03	2003	25.3		86.4		0.6		77.5	
Bangladesh Maternal health services and Maternal Mortality survey 2001	MHS01	2001								
Bangladesh Demographic and Health Survey 2004.	DHS04	2004	23.3		85.9		0.0		77.6	
Multi-Indicator Cluster Survey, 2005, Bangladesh Burea of Statistics & UNICEF	MICS05	2005	14.3		84.7		0.1		77.9	

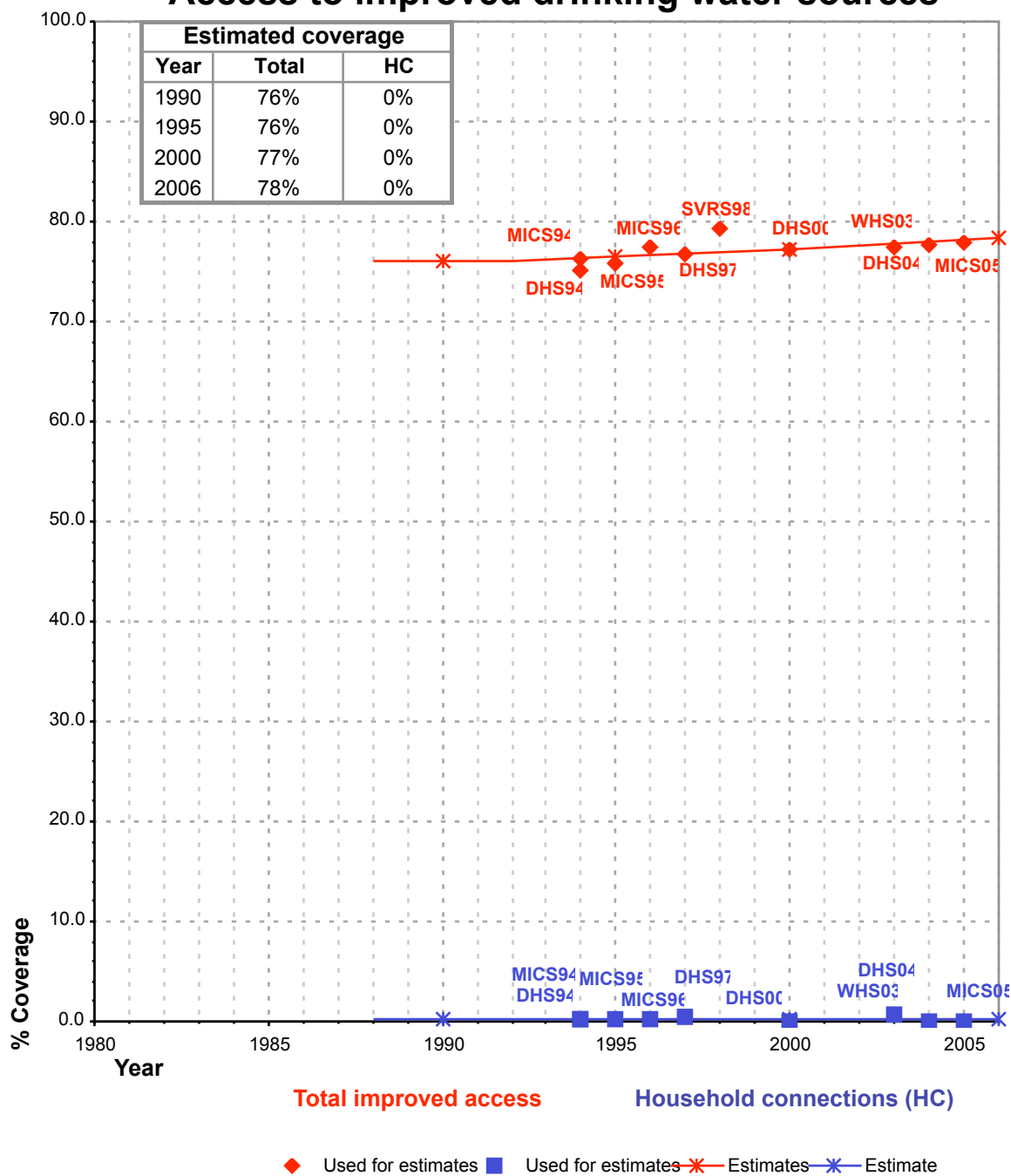
# Bangladesh - urban - Access to improved drinking water sources



**Total access** : Deduction has been made of 27% of all wells for arsenic contamination reasons.

**Household connections** :

# Bangladesh - rural - Access to improved drinking water sources



**Total access :** Deduction has been made of 27% of all wells for arsenic contamination reasons.

**Household connections :**