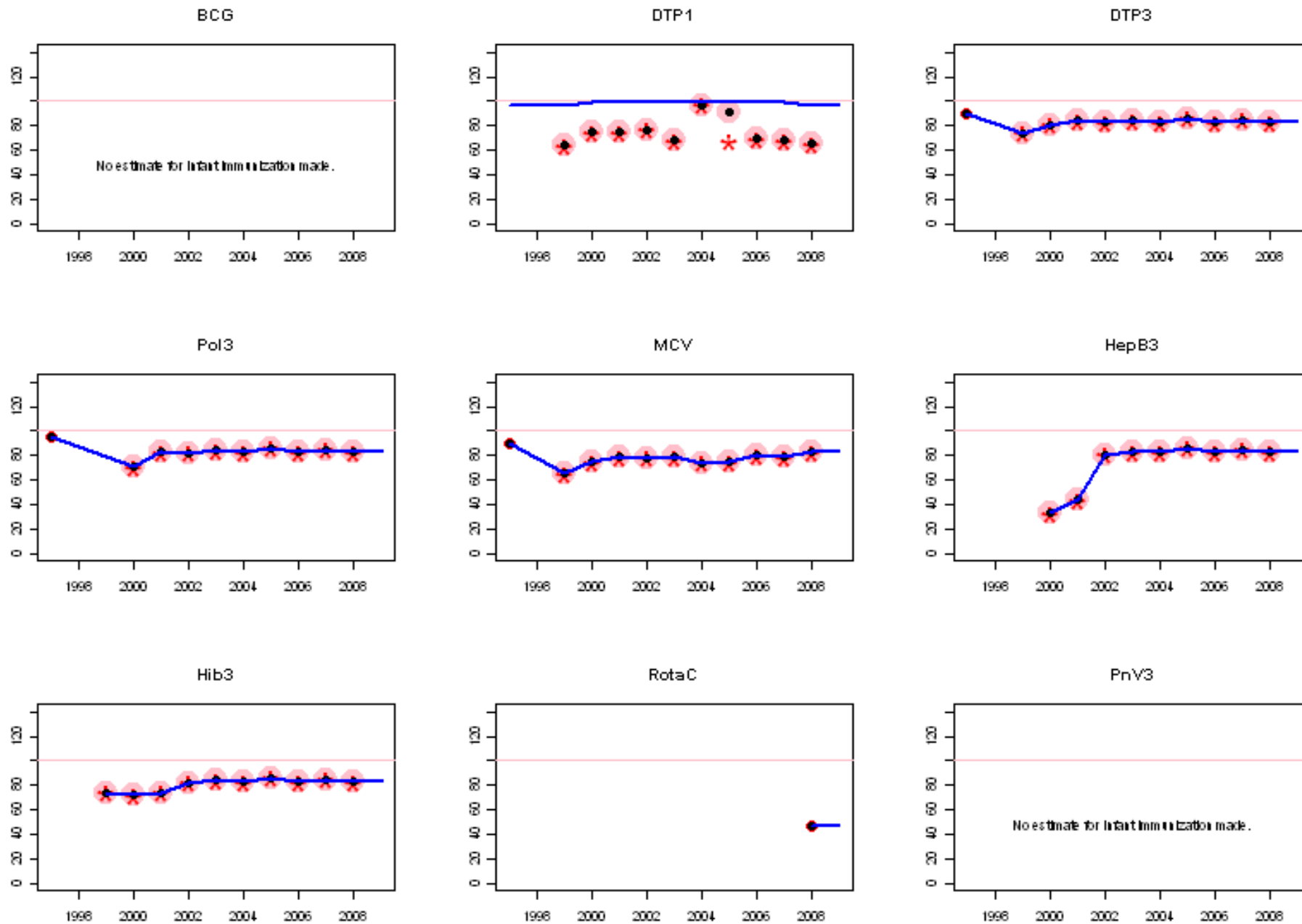
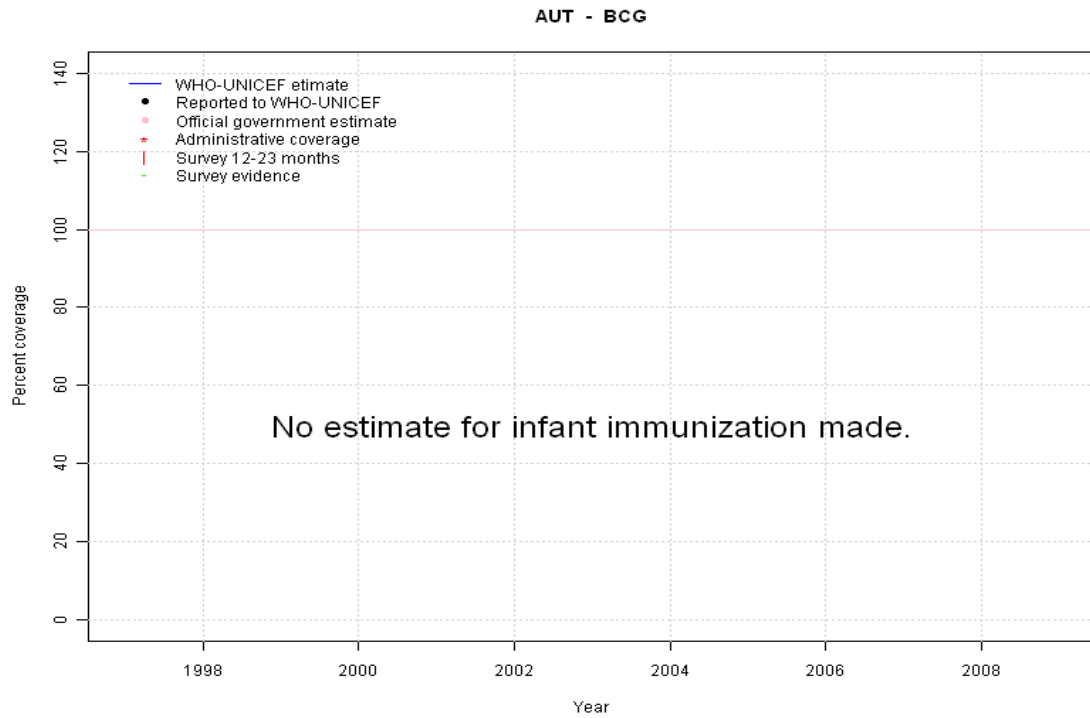


Austria: WHO and UNICEF estimates of immunization coverage, 1997 - 2009

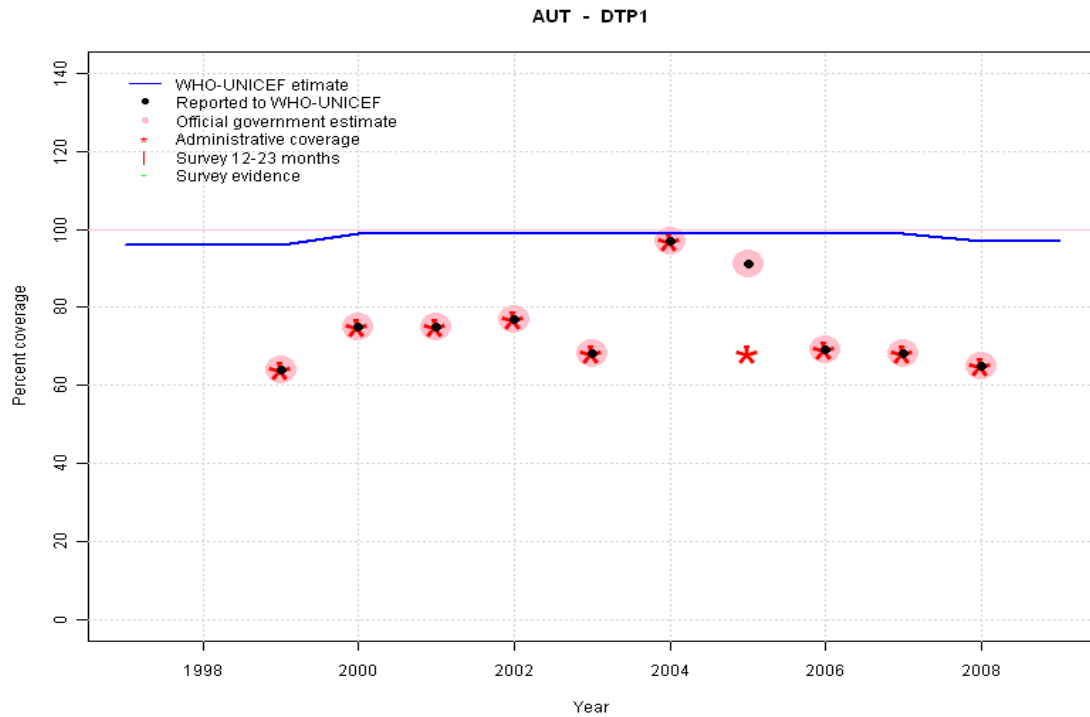


Austria - BCG



	1997	1998	1999	2000	2001	2002	2003	2004	2005	2006	2007	2008	2009
Estimate	NA	NA	NA	NA	NA	NA	NA	NA	NA	NA	NA	NA	NA
Reported	NA	NA	NA	NA	NA	NA	NA	NA	NA	NA	NA	NA	NA
Official	NA	NA	NA	NA	NA	NA	NA	NA	NA	NA	NA	NA	NA
Administrative	NA	NA	NA	NA	NA	NA	NA	NA	NA	NA	NA	NA	NA
Survey	NA	NA	NA	NA	NA	NA	NA	NA	NA	NA	NA	NA	NA

Austria - DTP1



	1997	1998	1999	2000	2001	2002	2003	2004	2005	2006	2007	2008	2009
Estimate	96	96	96	99	99	99	99	99	99	99	99	97	97
Reported	NA	NA	64	75	75	77	68	97	91	69	68	65	NA
Official	NA	NA	64	75	75	77	68	97	91	69	68	65	NA
Administrative	NA	NA	64	75	75	77	68	97	68	69	68	65	NA
Survey	NA	NA	NA	NA	NA	NA	NA	NA	NA	NA	NA	NA	NA

Description:

1997: Legacy estimate.

1998: Estimate calibrated to 1997 level (96 percent) and reported coverage (64 percent).

1999: Estimate calibrated to 1997 level (96 percent) and reported coverage (64 percent).

2000: Estimate calibrated to 1997 level (96 percent) and reported coverage (75 percent).

2001: Estimate calibrated to 1997 level (96 percent) and reported coverage (75 percent).

2002: Estimate calibrated to 1997 level (96 percent) and reported coverage (77 percent).

2003: Estimate calibrated to 1997 level (96 percent) and reported coverage (68 percent).

2004: Estimate calibrated to 1997 level (96 percent) and reported coverage (97 percent).

2005: Estimate calibrated to 1997 level (96 percent) and reported coverage (91 percent).

2006: Estimate calibrated to 1997 level (96 percent) and reported coverage (69 percent).

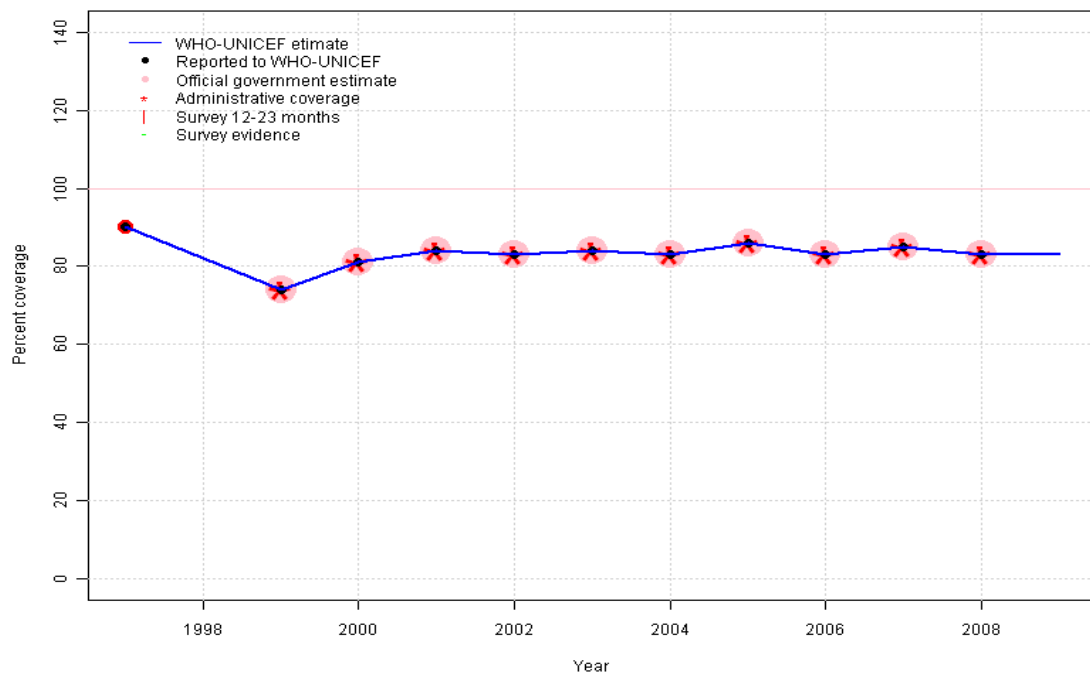
2007: Estimate calibrated to 1997 level (96 percent) and reported coverage (68 percent).

2008: Estimate calibrated to 1997 level (96 percent) and reported coverage (65 percent).

2009: Estimate calibrated to 1997 level (96 percent) and reported coverage (65 percent).

Austria - DTP3

AUT - DTP3



Description:

1997: Legacy estimate.

1998: Estimate based on trend in reported data. Missing or ignored reported value estimated by interpolation between reported values of 90 percent in 1997 and 74 percent in 1999.

1999: Estimate based on reported data.

2000: Estimate based on reported data.

2001: Estimate based on reported data.

2002: Estimate based on reported data.

2003: Estimate based on reported data.

2004: Estimate based on reported data.

2005: Estimate based on reported data.

2006: Estimate based on reported data.

2007: Estimate based on reported data.

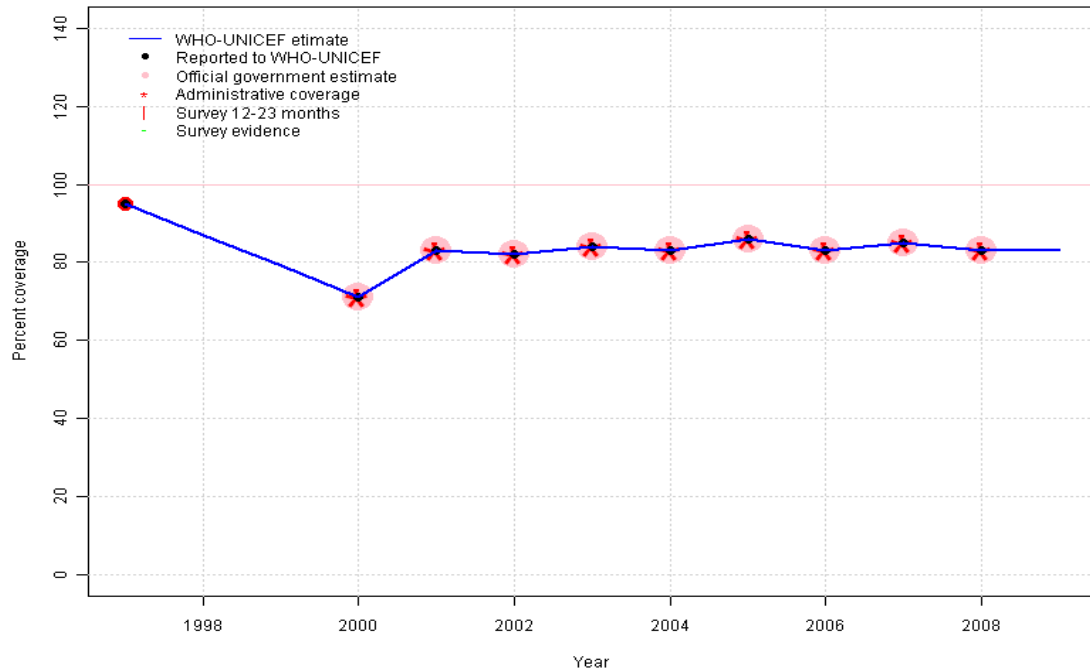
2008: Estimate based on reported data.

2009: Estimate based on trend in reported data. Missing or ignored reported value estimated by extrapolation from 2008 reported value of 83 percent.

	1997	1998	1999	2000	2001	2002	2003	2004	2005	2006	2007	2008	2009
Estimate	90	82	74	81	84	83	84	83	86	83	85	83	83
Reported	90	NA	74	81	84	83	84	83	86	83	85	83	NA
Official	NA	NA	74	81	84	83	84	83	86	83	85	83	NA
Administrative	NA	NA	74	81	84	83	84	83	86	83	85	83	NA
Survey	NA	NA	NA	NA	NA	NA	NA	NA	NA	NA	NA	NA	NA

Austria - Pol3

AUT - Pol3



Description:

1997: Legacy estimate.

1998: Estimate based on trend in reported data. Missing or ignored reported value estimated by interpolation between reported values of 95 percent in 1997 and 71 percent in 2000.

1999: Estimate based on trend in reported data. Missing or ignored reported value estimated by interpolation between reported values of 95 percent in 1997 and 71 percent in 2000.

2000: Estimate based on reported data.

2001: Estimate based on reported data.

2002: Estimate based on reported data.

2003: Estimate based on reported data.

2004: Estimate based on reported data.

2005: Estimate based on reported data.

2006: Estimate based on reported data.

2007: Estimate based on reported data.

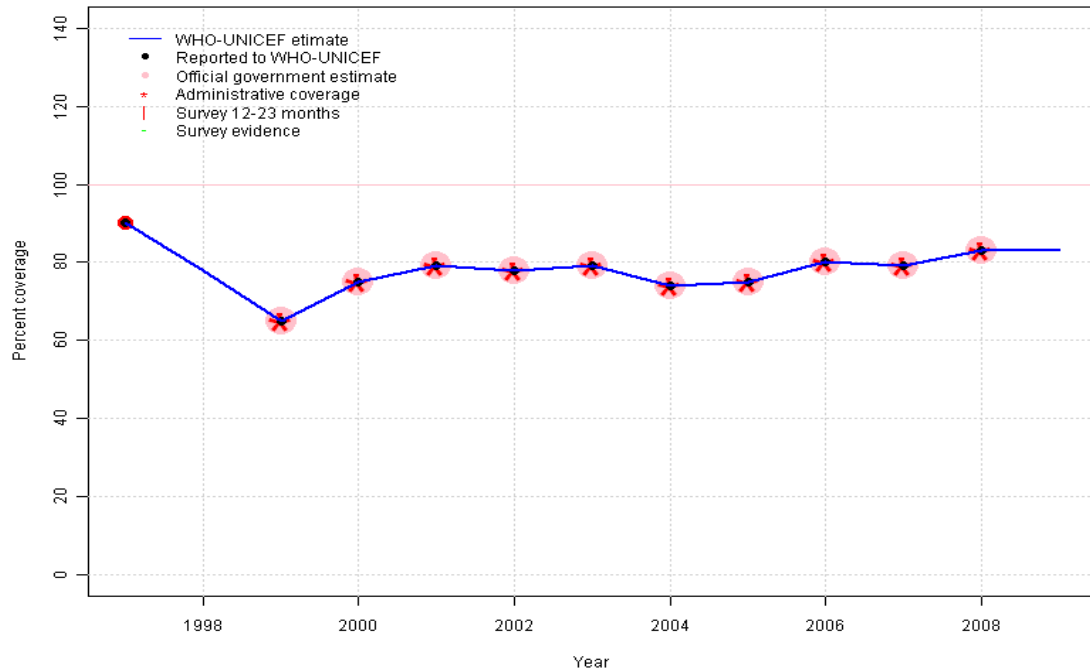
2008: Estimate based on reported data.

2009: Estimate based on trend in reported data. Missing or ignored reported value estimated by extrapolation from 2008 reported value of 83 percent.

	1997	1998	1999	2000	2001	2002	2003	2004	2005	2006	2007	2008	2009
Estimate	95	87	79	71	83	82	84	83	86	83	85	83	83
Reported	95	NA	NA	71	83	82	84	83	86	83	85	83	NA
Official	NA	NA	NA	71	83	82	84	83	86	83	85	83	NA
Administrative	NA	NA	NA	71	83	82	84	83	86	83	85	83	NA
Survey	NA	NA	NA	NA	NA	NA	NA	NA	NA	NA	NA	NA	NA

Austria - MCV

AUT - MCV



Description:

1997: Legacy estimate.

1998: Estimate based on trend in reported data. Missing or ignored reported value estimated by interpolation between reported values of 90 percent in 1997 and 65 percent in 1999.

1999: Estimate based on reported data.

2000: Estimate based on reported data.

2001: Estimate based on reported data.

2002: Estimate based on reported data.

2003: Estimate based on reported data.

2004: Estimate based on reported data.

2005: Estimate based on reported data.

2006: Estimate based on reported data.

2007: Estimate based on reported data.

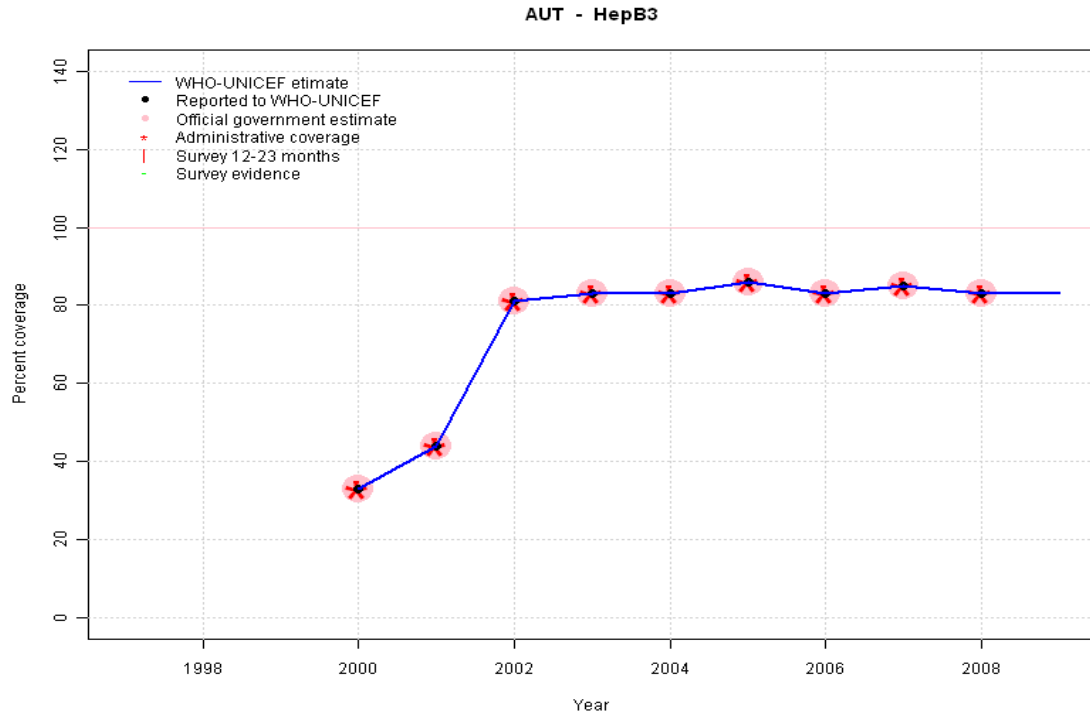
2008: Estimate based on reported data.

2009: Estimate based on trend in reported data. Missing or ignored reported value estimated by extrapolation from 2008 reported value of 83 percent.

	1997	1998	1999	2000	2001	2002	2003	2004	2005	2006	2007	2008	2009
Estimate	90	78	65	75	79	78	79	74	75	80	79	83	83
Reported	90	NA	65	75	79	78	79	74	75	80	79	83	NA
Official	NA	NA	65	75	79	78	79	74	75	80	79	83	NA
Administrative	NA	NA	65	75	79	78	79	74	75	80	79	83	NA
Survey	NA	NA	NA	NA	NA	NA	NA	NA	NA	NA	NA	NA	NA

Austria - HepB3

Description:



2000: Estimate based on reported data. HepB introduced in 1997. Reporting started in 2000.

2001: Estimate based on reported data.

2002: Estimate based on reported data.

2003: Estimate based on reported data.

2004: Estimate based on reported data.

2005: Estimate based on reported data.

2006: Estimate based on reported data.

2007: Estimate based on reported data.

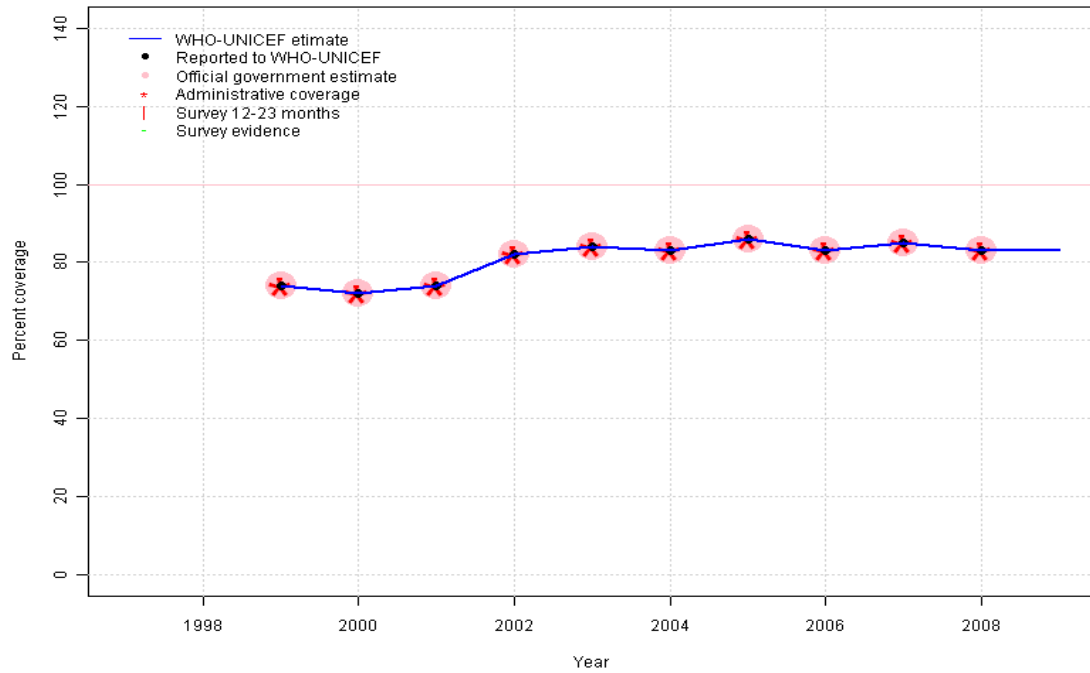
2008: Estimate based on reported data.

2009: Estimate based on reported data. Missing or ignored reported value estimated by extrapolation from 2008 reported value of 83 percent.

	1997	1998	1999	2000	2001	2002	2003	2004	2005	2006	2007	2008	2009
Estimate	NA	NA	NA	33	44	81	83	83	86	83	85	83	83
Reported	NA	NA	NA	33	44	81	83	83	86	83	85	83	NA
Official	NA	NA	NA	33	44	81	83	83	86	83	85	83	NA
Administrative	NA	NA	NA	33	44	81	83	83	86	83	85	83	NA
Survey	NA	NA	NA	NA	NA	NA	NA	NA	NA	NA	NA	NA	NA

Austria - Hib3

AUT - Hib3



Description:

- 1999: Estimate based on reported data. Hib introduced in 1994. Reporting started in 1999.
- 2000: Estimate based on reported data.
- 2001: Estimate based on reported data.
- 2002: Estimate based on reported data.
- 2003: Estimate based on reported data.
- 2004: Estimate based on reported data.
- 2005: Estimate based on reported data.
- 2006: Estimate based on reported data.
- 2007: Estimate based on reported data.
- 2008: Estimate based on reported data.
- 2009: Estimate based on reported data. Missing or ignored reported value estimated by extrapolation from 2008 reported value of 83 percent.

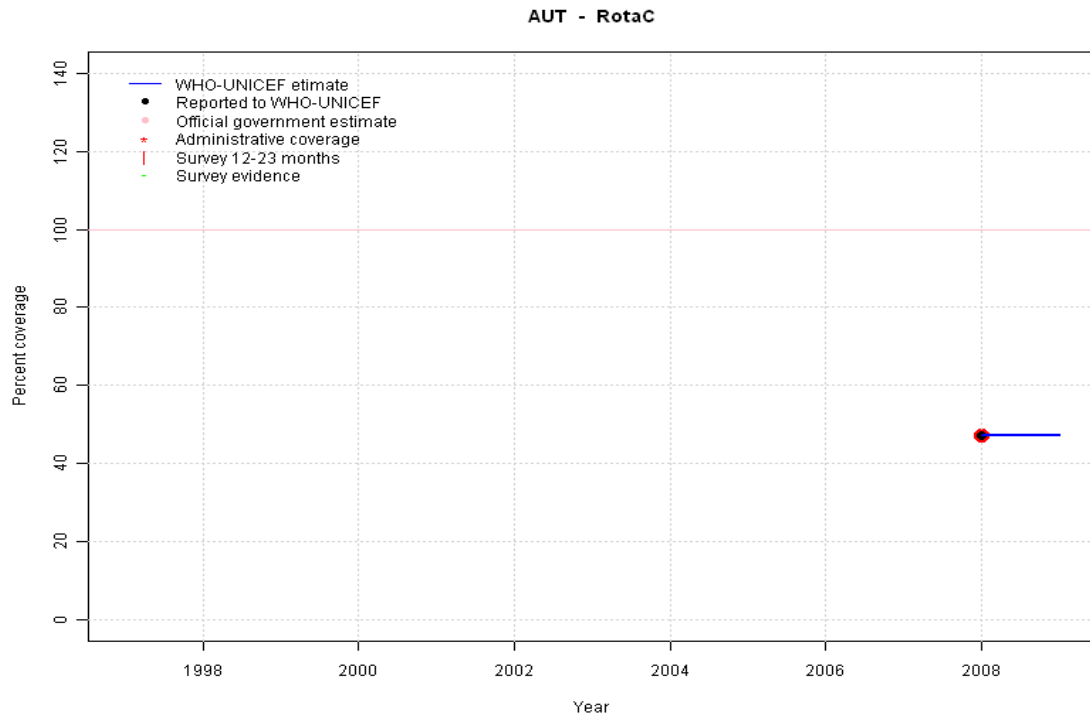
	1997	1998	1999	2000	2001	2002	2003	2004	2005	2006	2007	2008	2009
Estimate	NA	NA	74	72	74	82	84	83	86	83	85	83	83
Reported	NA	NA	74	72	74	82	84	83	86	83	85	83	NA
Official	NA	NA	74	72	74	82	84	83	86	83	85	83	NA
Administrative	NA	NA	74	72	74	82	84	83	86	83	85	83	NA
Survey	NA	NA	NA	NA	NA	NA	NA	NA	NA	NA	NA	NA	NA

Austria - RotaC

Description:

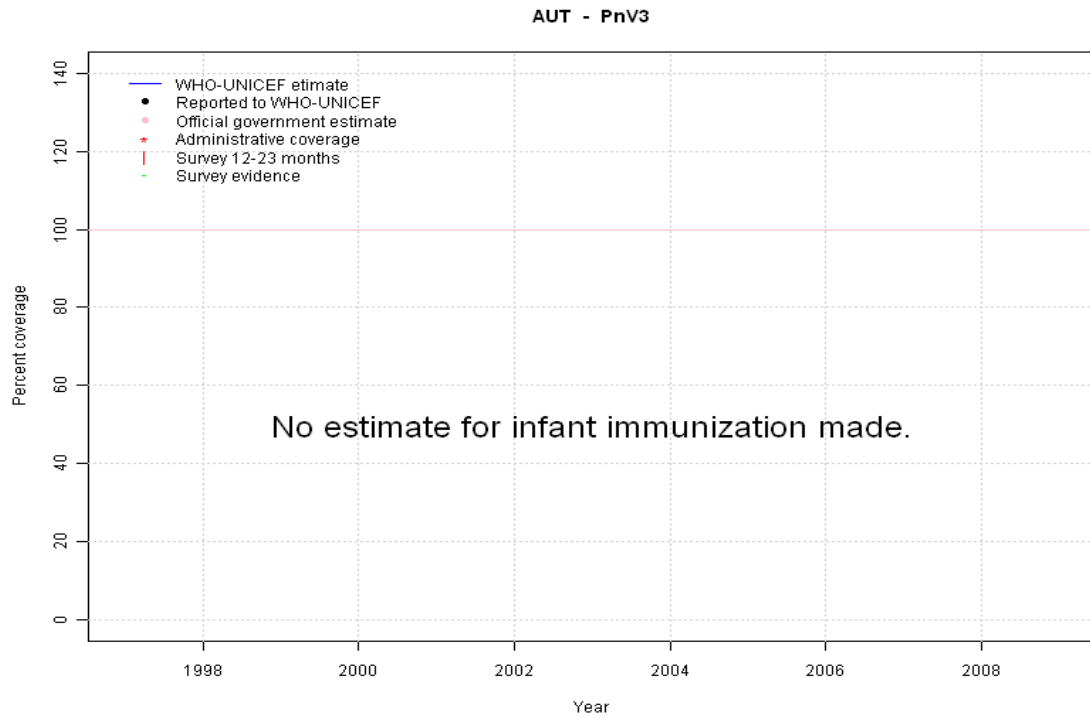
2008: Estimate based on reported data. Rota introduced in 2006 reporting started in 2008

2009: Estimate based on reported data. Missing or ignored reported value estimated by extrapolation from 2008 reported value of 47 percent.



	1997	1998	1999	2000	2001	2002	2003	2004	2005	2006	2007	2008	2009
Estimate	NA	NA	NA	NA	NA	NA	NA	NA	NA	NA	NA	47	47
Reported	NA	NA	NA	NA	NA	NA	NA	NA	NA	NA	NA	47	NA
Official	NA	NA	NA	NA	NA	NA	NA	NA	NA	NA	NA	NA	NA
Administrative	NA	NA	NA	NA	NA	NA	NA	NA	NA	NA	NA	NA	NA
Survey	NA	NA	NA	NA	NA	NA	NA	NA	NA	NA	NA	NA	NA

Austria - PnV3



	1997	1998	1999	2000	2001	2002	2003	2004	2005	2006	2007	2008	2009
Estimate	NA	NA	NA	NA	NA	NA	NA	NA	NA	NA	NA	NA	NA
Reported	NA	NA	NA	NA	NA	NA	NA	NA	NA	NA	NA	NA	NA
Official	NA	NA	NA	NA	NA	NA	NA	NA	NA	NA	NA	NA	NA
Administrative	NA	NA	NA	NA	NA	NA	NA	NA	NA	NA	NA	NA	NA
Survey	NA	NA	NA	NA	NA	NA	NA	NA	NA	NA	NA	NA	NA

Further information and estimates for 1980-1996 are available at:

http://www.childinfo.org/immunization_countryreports.html

http://www.who.int/immunization_monitoring/routine/immunization_coverage/en/index4.html