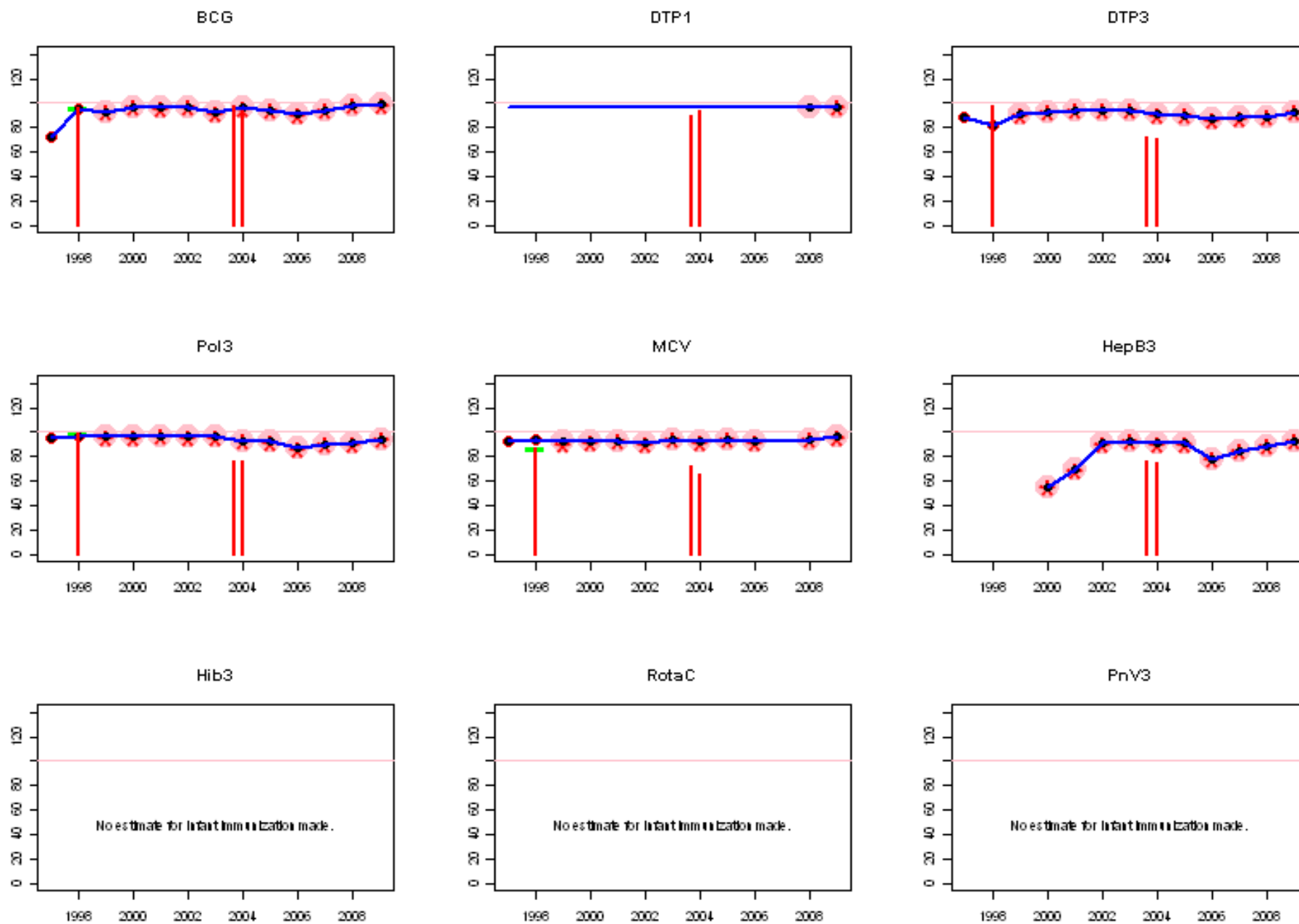
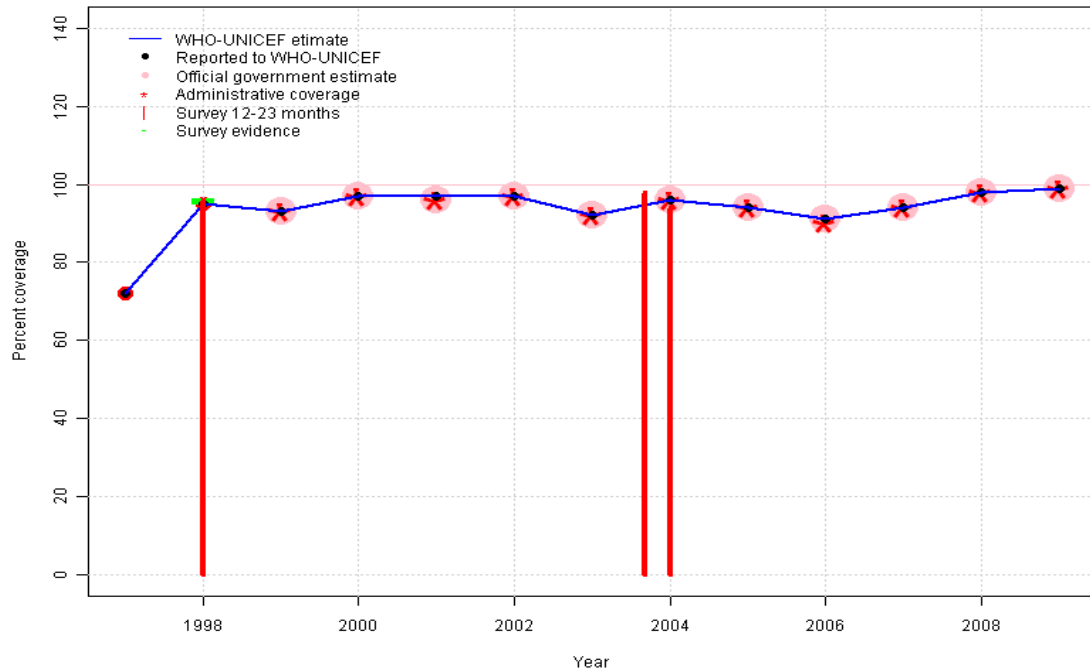


Armenia: WHO and UNICEF estimates of immunization coverage, 1997 - 2009



# Armenia - BCG

ARM - BCG



## Description:

1997: Legacy estimate.

1998: Estimate based on reported data (95 percent) confirmed by survey (96 percent).

1999: Estimate based on reported data.

2000: Estimate based on reported data.

2001: Estimate based on reported data.

2002: Estimate based on reported data.

2003: Estimate based on reported data.

2004: Estimate based on reported data. Survey results of 98 percent ignored by working group. Sample size small, 302 children. Survey results of 94 percent ignored by working group. Sample size small, 302 children.

2005: Estimate based on reported data.

2006: Estimate based on reported data.

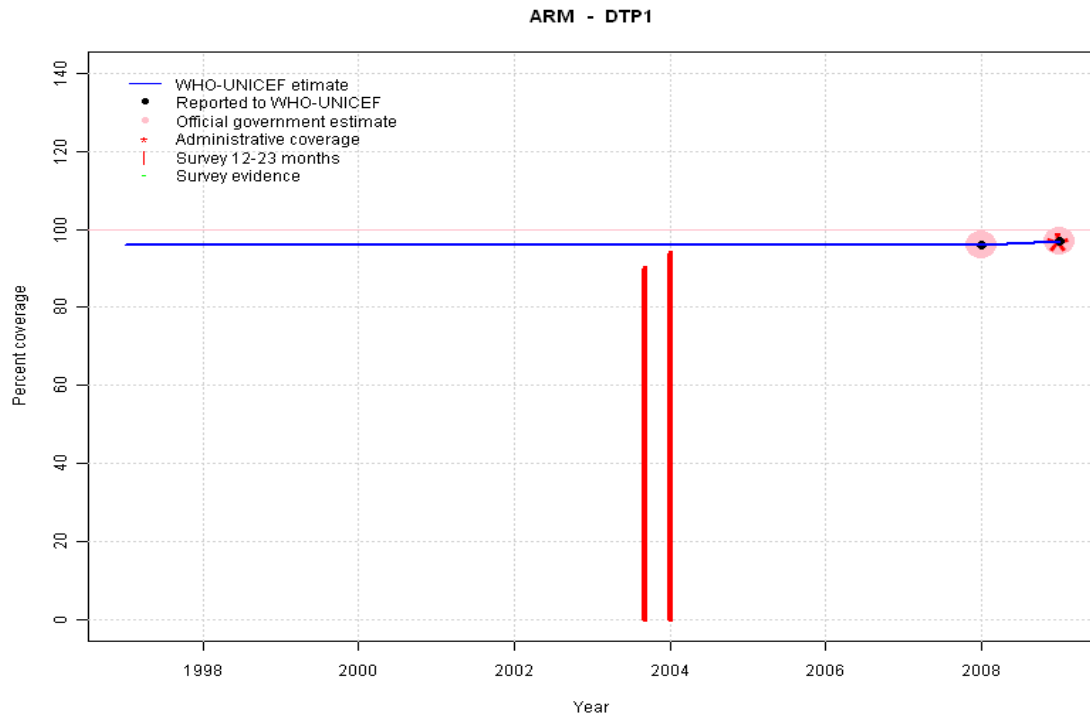
2007: Estimate based on reported data.

2008: Estimate based on reported data.

2009: Estimate based on reported data.

	1997	1998	1999	2000	2001	2002	2003	2004	2005	2006	2007	2008	2009
Estimate	72	95	93	97	97	97	92	96	94	91	94	98	99
Reported	72	95	93	97	97	97	92	96	94	91	94	98	99
Official	NA	NA	93	97	96	97	92	96	94	91	94	98	99
Administrative	NA	NA	93	97	96	97	92	96	94	90	94	98	99
Survey	NA	96	NA	NA	NA	NA	NA	NA	NA	NA	NA	NA	NA

# Armenia - DTP1



	1997	1998	1999	2000	2001	2002	2003	2004	2005	2006	2007	2008	2009
Estimate	96	96	96	96	96	96	96	96	96	96	96	96	97
Reported	NA	NA	NA	NA	NA	NA	NA	NA	NA	NA	NA	96	97
Official	NA	NA	NA	NA	NA	NA	NA	NA	NA	NA	NA	96	97
Administrative	NA	NA	NA	NA	NA	NA	NA	NA	NA	NA	NA	NA	97
Survey	NA	NA	NA	NA	NA	NA	NA	NA	NA	NA	NA	NA	NA

## Description:

1997: Legacy estimate.

1998: Estimate based on trend in reported data. Missing or ignored reported value estimated by extrapolation from 2008 reported value of 96 percent.

1999: Estimate based on trend in reported data. Missing or ignored reported value estimated by extrapolation from 2008 reported value of 96 percent.

2000: Estimate based on trend in reported data. Missing or ignored reported value estimated by extrapolation from 2008 reported value of 96 percent.

2001: Estimate based on trend in reported data. Missing or ignored reported value estimated by extrapolation from 2008 reported value of 96 percent.

2002: Estimate based on trend in reported data. Missing or ignored reported value estimated by extrapolation from 2008 reported value of 96 percent.

2003: Estimate based on trend in reported data. Missing or ignored reported value estimated by extrapolation from 2008 reported value of 96 percent.

2004: Estimate based on trend in reported data. Missing or ignored reported value estimated by extrapolation from 2008 reported value of 96 percent. Survey results of 90 percent ignored by working group. Sample size small, 302 children. Survey results of 94 percent ignored by working group. Sample size small, 302 children.

2005: Estimate based on trend in reported data. Missing or ignored reported value estimated by extrapolation from 2008 reported value of 96 percent.

2006: Estimate based on trend in reported data. Missing or ignored reported value estimated by extrapolation from 2008 reported value of 96 percent.

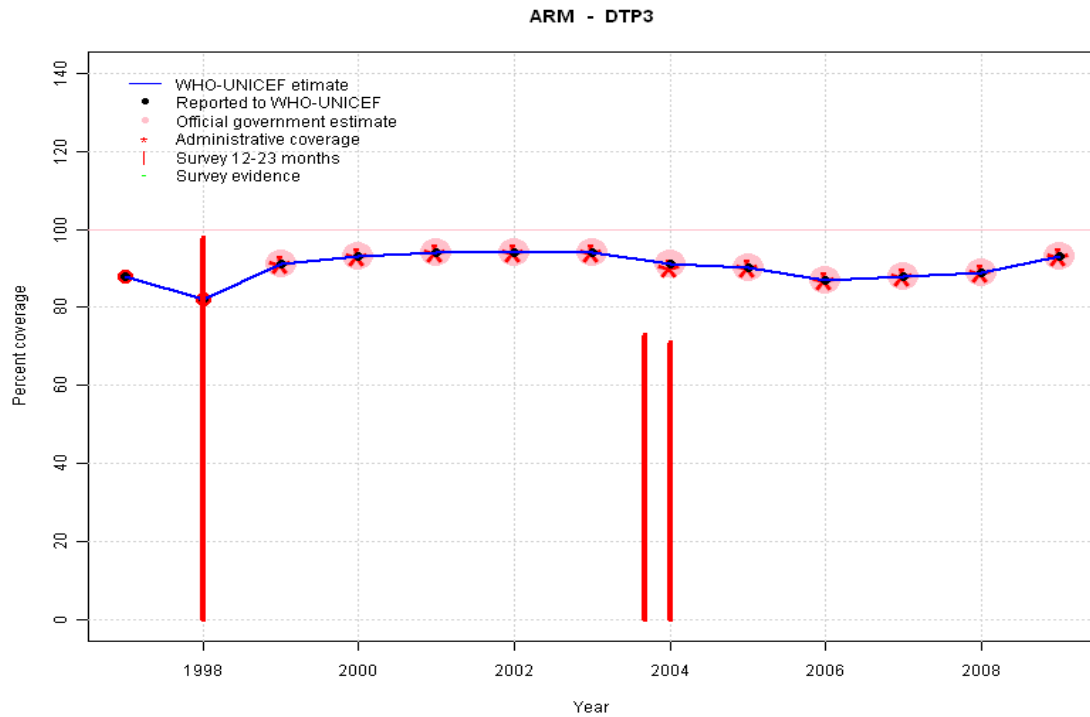
2007: Estimate based on trend in reported data. Missing or ignored reported value estimated by extrapolation from 2008 reported value of 96 percent.

2008: Estimate based on reported data.

2009: Estimate based on reported data.

# Armenia - DTP3

## Description:



1997: Legacy estimate.

1998: Estimate based on reported data. Survey results of 98 percent ignored by working group. Estimates based on reported data. Survey confirms reported coverage for all other vaccines.

1999: Estimate based on reported data.

2000: Estimate based on reported data.

2001: Estimate based on reported data.

2002: Estimate based on reported data.

2003: Estimate based on reported data.

2004: Estimate based on reported data. Survey results of 73 percent ignored by working group. Sample size small, 302 children. Survey results of 71 percent ignored by working group. Sample size small, 302 children.

2005: Estimate based on reported data.

2006: Estimate based on reported data.

2007: Estimate based on reported data.

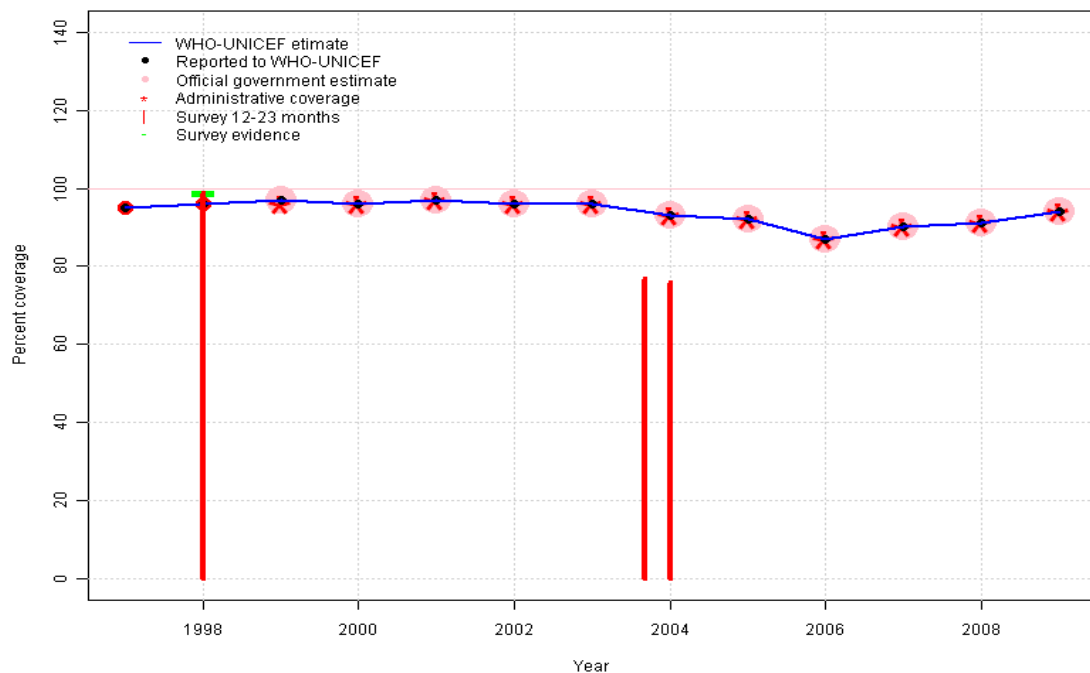
2008: Estimate based on reported data.

2009: Estimate based on reported data.

	1997	1998	1999	2000	2001	2002	2003	2004	2005	2006	2007	2008	2009
Estimate	88	82	91	93	94	94	94	91	90	87	88	89	93
Reported	88	82	91	93	94	94	94	91	90	87	88	89	93
Official	NA	NA	91	93	94	94	94	91	90	87	88	89	93
Administrative	NA	NA	91	93	94	94	94	90	90	87	88	89	93
Survey	NA	NA	NA	NA	NA	NA	NA	NA	NA	NA	NA	NA	NA

# Armenia - Pol3

ARM - Pol3



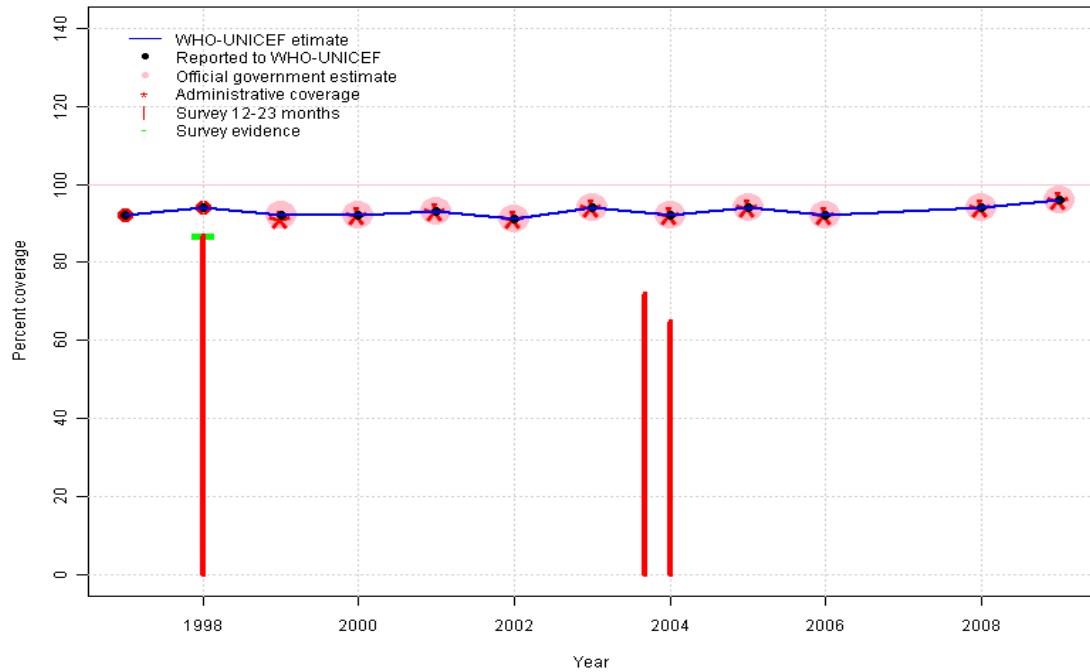
## Description:

- 1997: Legacy estimate.
- 1998: Estimate based on reported data (96 percent) confirmed by survey (99 percent).
- 1999: Estimate based on reported data.
- 2000: Estimate based on reported data.
- 2001: Estimate based on reported data.
- 2002: Estimate based on reported data.
- 2003: Estimate based on reported data.
- 2004: Estimate based on reported data. Survey results of 77 percent ignored by working group. Sample size small, 302 children. Survey results of 76 percent ignored by working group. Sample size small, 302 children.
- 2005: Estimate based on reported data.
- 2006: Estimate based on reported data.
- 2007: Estimate based on reported data.
- 2008: Estimate based on reported data.
- 2009: Estimate based on reported data.

	1997	1998	1999	2000	2001	2002	2003	2004	2005	2006	2007	2008	2009
Estimate	95	96	97	96	97	96	96	93	92	87	90	91	94
Reported	95	96	97	96	97	96	96	93	92	87	90	91	94
Official	NA	NA	97	96	97	96	96	93	92	87	90	91	94
Administrative	NA	NA	96	96	97	96	96	93	92	87	90	91	94
Survey	NA	99	NA	NA	NA	NA	NA	NA	NA	NA	NA	NA	NA

# Armenia - MCV

ARM - MCV



	1997	1998	1999	2000	2001	2002	2003	2004	2005	2006	2007	2008	2009
Estimate	92	94	92	92	93	91	94	92	94	92	93	94	96
Reported	92	94	92	92	93	91	94	92	94	92	NA	94	96
Official	NA	NA	92	92	93	91	94	92	94	92	NA	94	96
Administrative	NA	NA	91	92	93	91	94	92	94	92	NA	94	96
Survey	NA	87	NA	NA	NA	NA	NA	NA	NA	NA	NA	NA	NA

## Description:

1997: Legacy estimate.

1998: Estimate based on reported data (94 percent) confirmed by survey (87 percent).

1999: Estimate based on reported data.

2000: Estimate based on reported data.

2001: Estimate based on reported data.

2002: Estimate based on reported data.

2003: Estimate based on reported data.

2004: Estimate based on reported data. Survey results of 72 percent ignored by working group. Sample size small, 302 children. Survey results of 65 percent ignored by working group. Sample size small, 302 children.

2005: Estimate based on reported data.

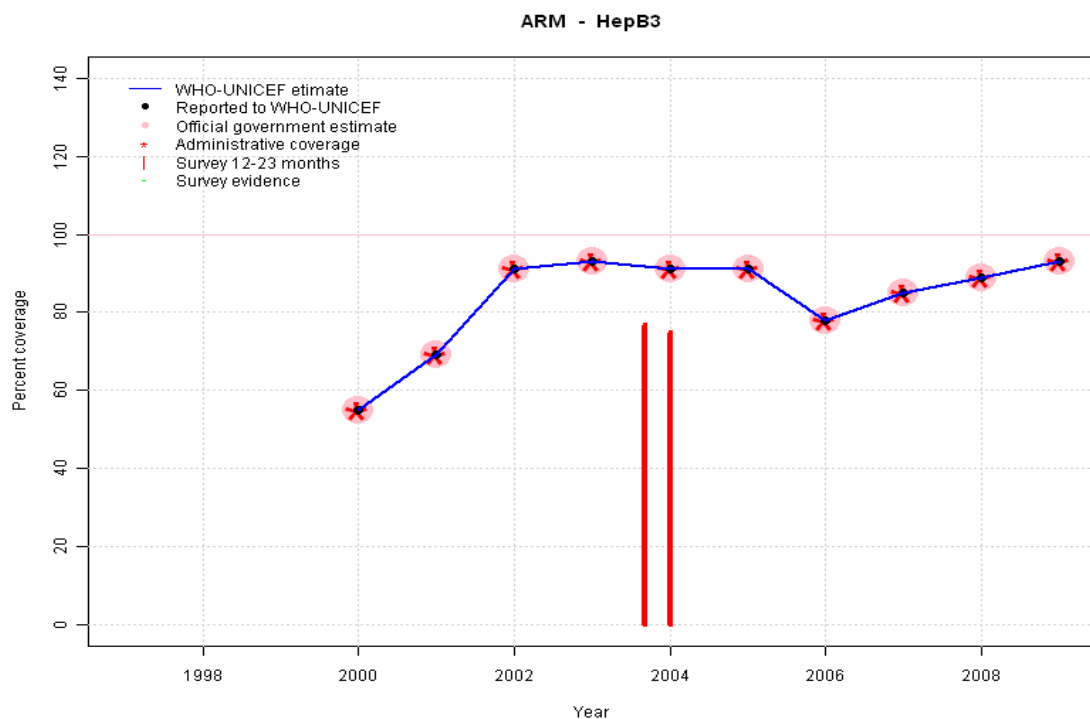
2006: Estimate based on reported data.

2007: Estimate based on trend in reported data. Missing or ignored reported value estimated by interpolation between reported values of 92 percent in 2006 and 94 percent in 2008.

2008: Estimate based on reported data.

2009: Estimate based on reported data.

# Armenia - HepB3

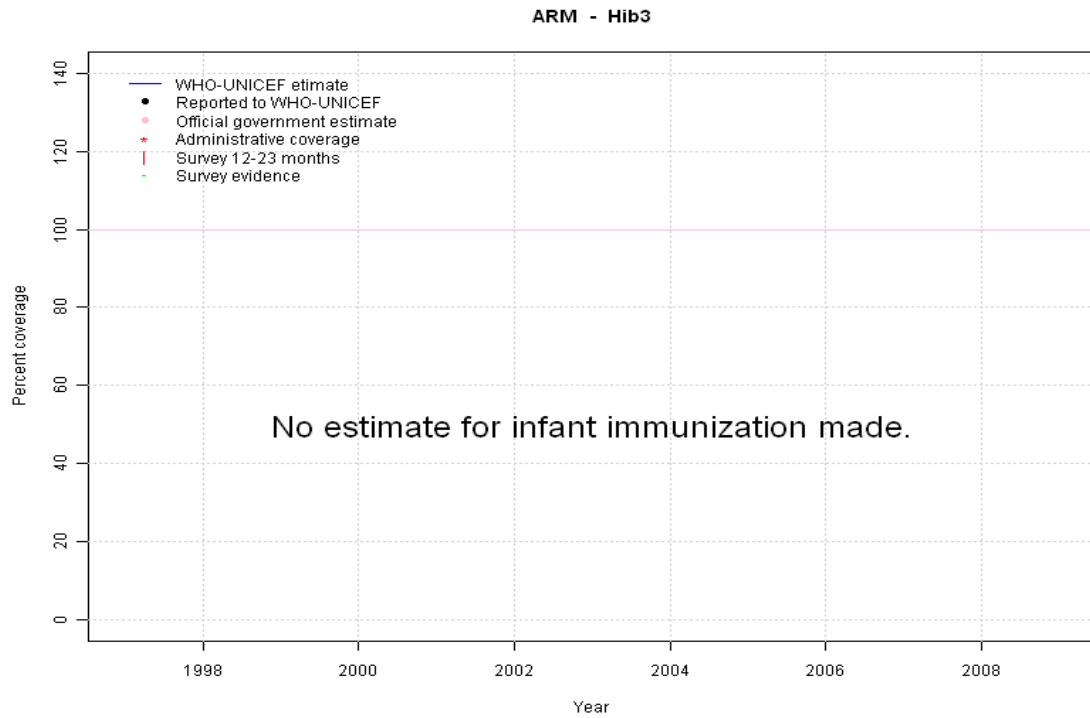


## Description:

- 2000: Estimate based on reported data. HepB introduced in 1999. Reporting started in 2000. Vaccine presentation is HepB .
- 2001: Estimate based on reported data.
- 2002: Estimate based on reported data.
- 2003: Estimate based on reported data.
- 2004: Estimate based on reported data. Survey results of 77 percent ignored by working group. Sample size small, 302 children. Survey results of 75 percent ignored by working group. Sample size small, 302 children.
- 2005: Estimate based on reported data.
- 2006: Estimate based on reported data.
- 2007: Estimate based on reported data.
- 2008: Estimate based on reported data.
- 2009: Estimate based on reported data.

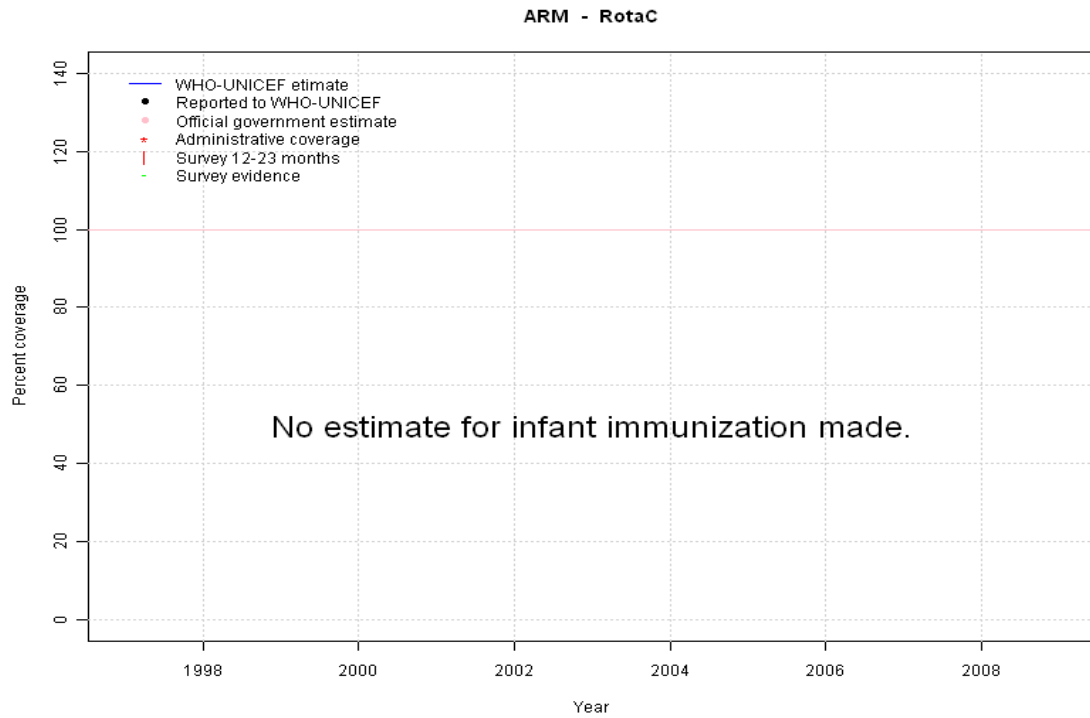
	1997	1998	1999	2000	2001	2002	2003	2004	2005	2006	2007	2008	2009
Estimate	NA	NA	NA	55	69	91	93	91	91	78	85	89	93
Reported	NA	NA	NA	55	69	91	93	91	91	78	85	89	93
Official	NA	NA	NA	55	69	91	93	91	91	78	85	89	93
Administrative	NA	NA	NA	55	69	91	93	91	91	78	85	89	93
Survey	NA	NA	NA	NA	NA	NA	NA	NA	NA	NA	NA	NA	NA

# Armenia - Hib3



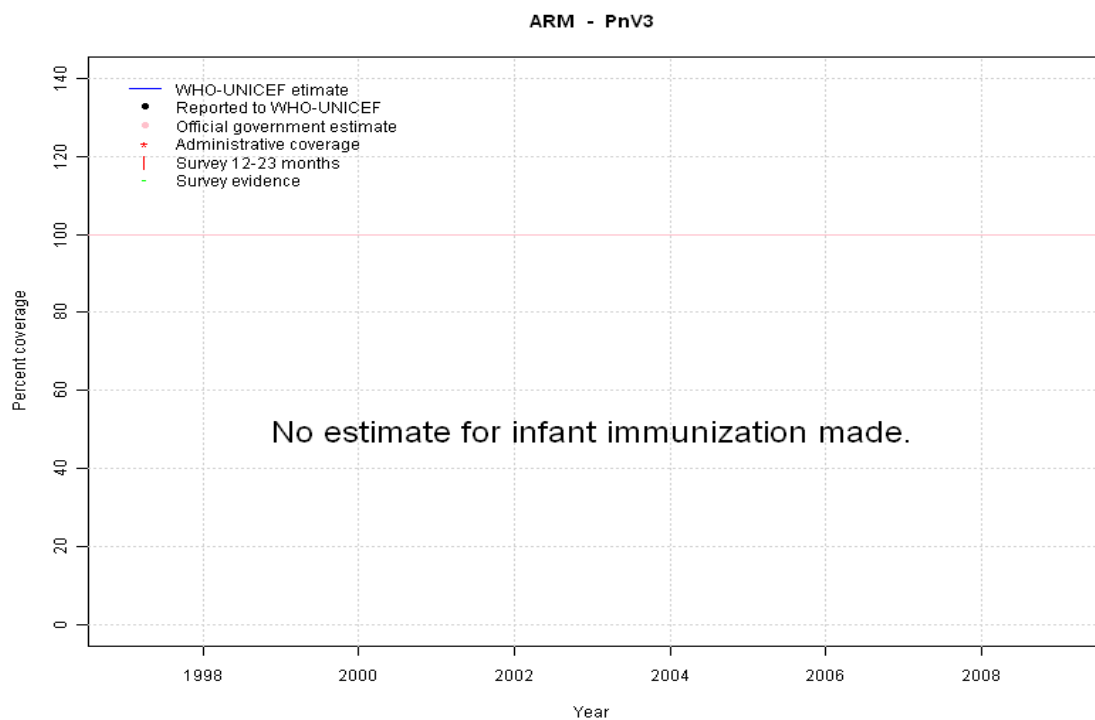
	1997	1998	1999	2000	2001	2002	2003	2004	2005	2006	2007	2008	2009
Estimate	NA	NA	NA	NA	NA	NA	NA	NA	NA	NA	NA	NA	NA
Reported	NA	NA	NA	NA	NA	NA	NA	NA	NA	NA	NA	NA	NA
Official	NA	NA	NA	NA	NA	NA	NA	NA	NA	NA	NA	NA	NA
Administrative	NA	NA	NA	NA	NA	NA	NA	NA	NA	NA	NA	NA	NA
Survey	NA	NA	NA	NA	NA	NA	NA	NA	NA	NA	NA	NA	NA

# Armenia - RotaC



	1997	1998	1999	2000	2001	2002	2003	2004	2005	2006	2007	2008	2009
Estimate	NA	NA	NA	NA	NA	NA	NA	NA	NA	NA	NA	NA	NA
Reported	NA	NA	NA	NA	NA	NA	NA	NA	NA	NA	NA	NA	NA
Official	NA	NA	NA	NA	NA	NA	NA	NA	NA	NA	NA	NA	NA
Administrative	NA	NA	NA	NA	NA	NA	NA	NA	NA	NA	NA	NA	NA
Survey	NA	NA	NA	NA	NA	NA	NA	NA	NA	NA	NA	NA	NA

# Armenia - PnV3



	1997	1998	1999	2000	2001	2002	2003	2004	2005	2006	2007	2008	2009
Estimate	NA	NA	NA	NA	NA	NA	NA	NA	NA	NA	NA	NA	NA
Reported	NA	NA	NA	NA	NA	NA	NA	NA	NA	NA	NA	NA	NA
Official	NA	NA	NA	NA	NA	NA	NA	NA	NA	NA	NA	NA	NA
Administrative	NA	NA	NA	NA	NA	NA	NA	NA	NA	NA	NA	NA	NA
Survey	NA	NA	NA	NA	NA	NA	NA	NA	NA	NA	NA	NA	NA

# Armenia - survey details

## 2004 Armenia Demographic and Health Survey 2005

Vaccine	Confirmation method	Coverage	Age cohort	Sample	Cards seen
BCG	C or H <12 months	98	12-23 m	302	92
BCG	Card	90	12-23 m	302	92
BCG	Card or History	98	12-23 m	302	92
BCG	Card or History	94	12-23 m	302	92
BCG	History	8	12-23 m	302	92
DTP1	C or H <12 months	87	12-23 m	302	92
DTP1	Card	87	12-23 m	302	92
DTP1	Card or History	94	12-23 m	302	92
DTP1	Card or History	90	12-23 m	302	92
DTP1	History	7	12-23 m	302	92
DTP3	History	3	12-23 m	302	92
DTP3	C or H <12 months	45	12-23 m	302	92
DTP3	Card	68	12-23 m	302	92
DTP3	Card or History	71	12-23 m	302	92
DTP3	Card or History	73	12-23 m	302	92
HepB1	Card	90	12-23 m	302	92
HepB1	History	7	12-23 m	302	92
HepB1	Card or History	94	12-23 m	302	92
HepB1	Card or History	98	12-23 m	302	92
HepB1	C or H <12 months	97	12-23 m	302	92
HepB3	Card or History	77	12-23 m	302	92
HepB3	Card or History	75	12-23 m	302	92
HepB3	Card	72	12-23 m	302	92
HepB3	C or H <12 months	66	12-23 m	302	92
HepB3	History	4	12-23 m	302	92
MCV	History	3	12-23 m	302	92
MCV	Card or History	65	12-23 m	302	92
MCV	Card or History	72	12-23 m	302	92
MCV	Card	69	12-23 m	302	92
MCV	C or H <12 months	3	12-23 m	302	92

Pol1	Card or History	93	12-23 m	302	92
Pol1	C or H <12 months	93	12-23 m	302	92
Pol1	History	8	12-23 m	302	92
Pol1	Card	90	12-23 m	302	92
Pol1	Card or History	98	12-23 m	302	92
Pol3	History	4	12-23 m	302	92
Pol3	C or H <12 months	42	12-23 m	302	92
Pol3	Card	72	12-23 m	302	92
Pol3	Card or History	77	12-23 m	302	92
Pol3	Card or History	76	12-23 m	302	92

## 1999 Armenia Demographic and Health Survey 2000, 2001

Vaccine	Confirmation method	Coverage	Age cohort	Sample	Cards seen
BCG	Card	89	12-23 m	283	93
DTP1	Card	92	12-23 m	283	93
DTP3	Card	88	12-23 m	283	93
MCV	Card	73	12-23 m	283	93
Pol1	Card	93	12-23 m	283	93
Pol3	Card	91	12-23 m	283	93

## 1998 Evaluation of the National Immunization Program of the Republic of Armenia 1999

Vaccine	Confirmation method	Coverage	Age cohort	Sample	Cards seen
BCG	Card or History	96	15-26 m	2145	0
DTP3	Card or History	98	15-26 m	2145	0
MCV	Card or History	87	15-26 m	2145	0
Pol3	Card or History	99	15-26 m	2145	0

Further information and estimates for 1980-1996 are available at:

[http://www.childinfo.org/immunization\\_countryreports.html](http://www.childinfo.org/immunization_countryreports.html)

[http://www.who.int/immunization\\_monitoring/routine/immunization\\_coverage/en/index4.html](http://www.who.int/immunization_monitoring/routine/immunization_coverage/en/index4.html)