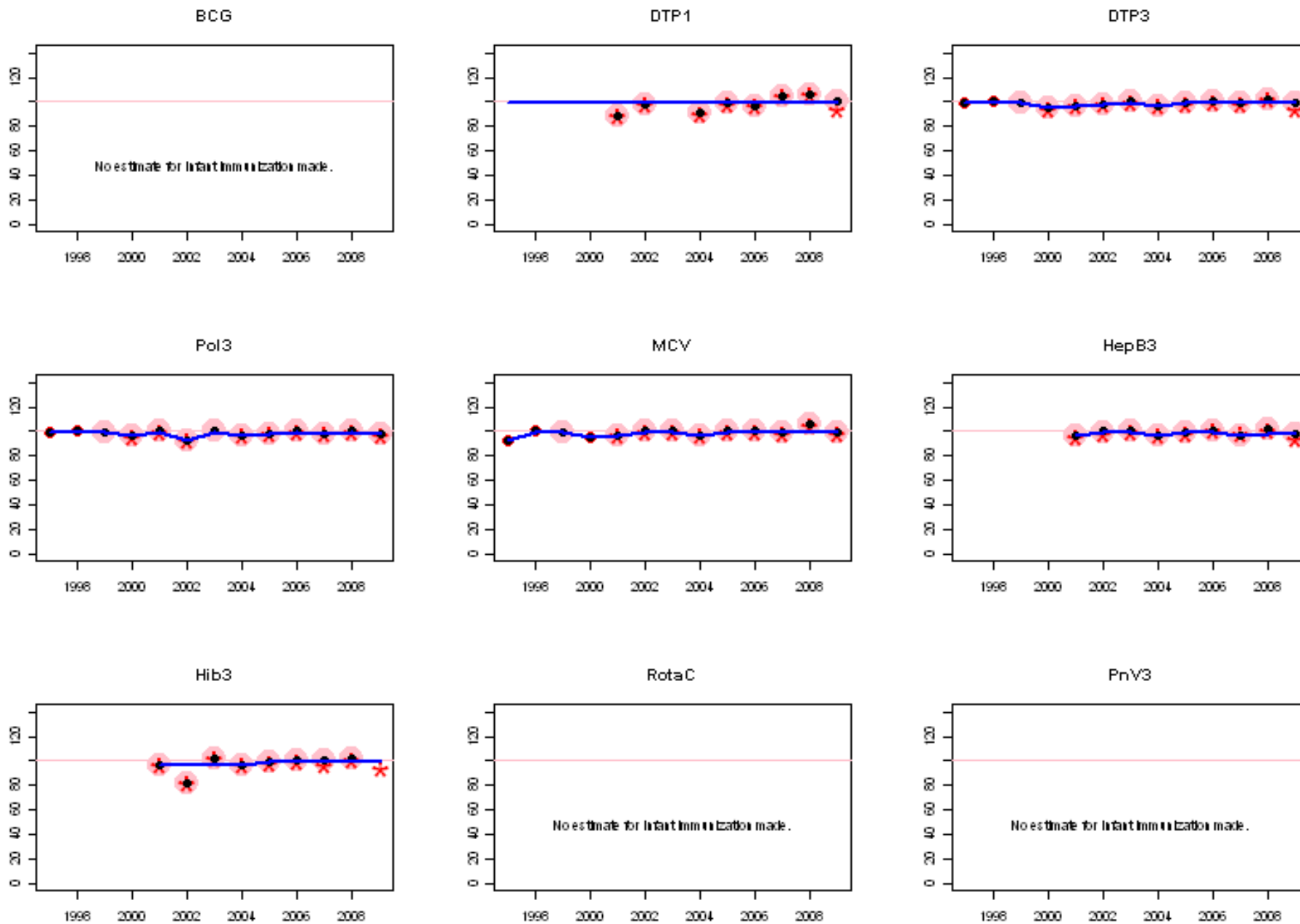
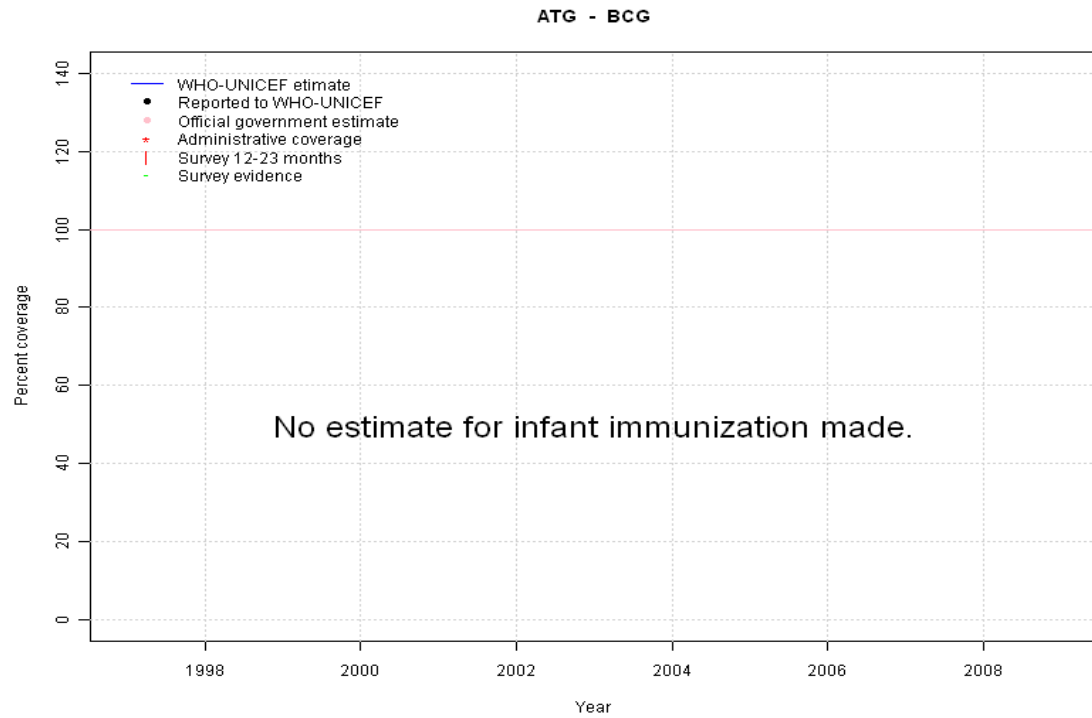


Antigua and Barbuda: WHO and UNICEF estimates of immunization coverage, 1997 - 2009



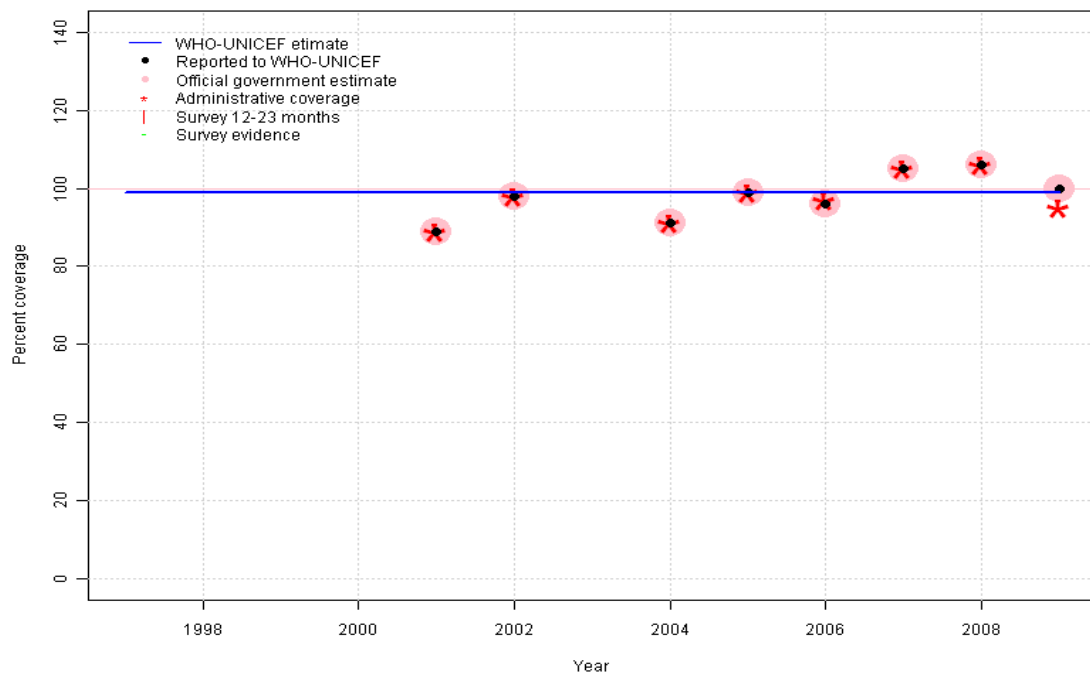
Antigua and Barbuda - BCG



	1997	1998	1999	2000	2001	2002	2003	2004	2005	2006	2007	2008	2009
Estimate	NA	NA	NA	NA	NA	NA	NA	NA	NA	NA	NA	NA	NA
Reported	NA	NA	NA	NA	NA	NA	NA	NA	NA	NA	NA	NA	NA
Official	NA	NA	NA	NA	NA	NA	NA	NA	NA	NA	NA	NA	NA
Administrative	NA	NA	NA	NA	NA	NA	NA	NA	NA	NA	NA	NA	NA
Survey	NA	NA	NA	NA	NA	NA	NA	NA	NA	NA	NA	NA	NA

Antigua and Barbuda - DTP1

ATG - DTP1



	1997	1998	1999	2000	2001	2002	2003	2004	2005	2006	2007	2008	2009
Estimate	99	99	99	99	99	99	99	99	99	99	99	99	99
Reported	NA	NA	NA	NA	89	98	NA	91	99	96	105	106	100
Official	NA	NA	NA	NA	89	98	NA	91	99	96	105	106	100
Administrative	NA	NA	NA	NA	89	98	NA	91	99	97	105	106	95
Survey	NA	NA	NA	NA	NA	NA	NA	NA	NA	NA	NA	NA	NA

Description:

1997: Legacy estimate.

1998: Estimate calibrated to 1997 level (99 percent) and reported coverage (89 percent).

1999: Estimate calibrated to 1997 level (99 percent) and reported coverage (89 percent).

2000: Estimate calibrated to 1997 level (99 percent) and reported coverage (89 percent).

2001: Estimate calibrated to 1997 level (99 percent) and reported coverage (89 percent).

2002: Estimate calibrated to 1997 level (99 percent) and reported coverage (98 percent).

2003: Estimate calibrated to 1997 level (99 percent) and reported coverage (95 percent).

2004: Estimate calibrated to 1997 level (99 percent) and reported coverage (91 percent).

2005: Estimate calibrated to 1997 level (99 percent) and reported coverage (99 percent).

2006: Estimate calibrated to 1997 level (99 percent) and reported coverage (96 percent).

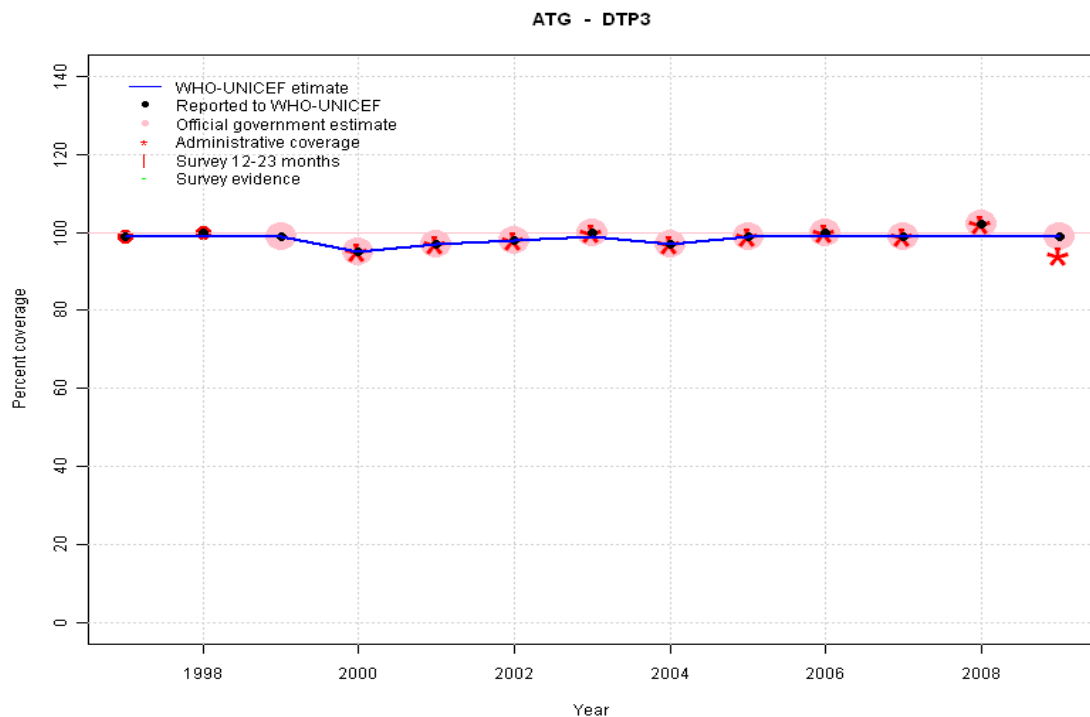
2007: Estimate calibrated to 1997 level (99 percent) and reported coverage (97 percent). 2007 reported data (105 percent) ignored; greater than 100 percent.

2008: Estimate calibrated to 1997 level (99 percent) and reported coverage (99 percent). 2008 reported data (106 percent) ignored; greater than 100 percent.

2009: Estimate calibrated to 1997 level (99 percent) and reported coverage (99 percent).

Antigua and Barbuda - DTP3

Description:

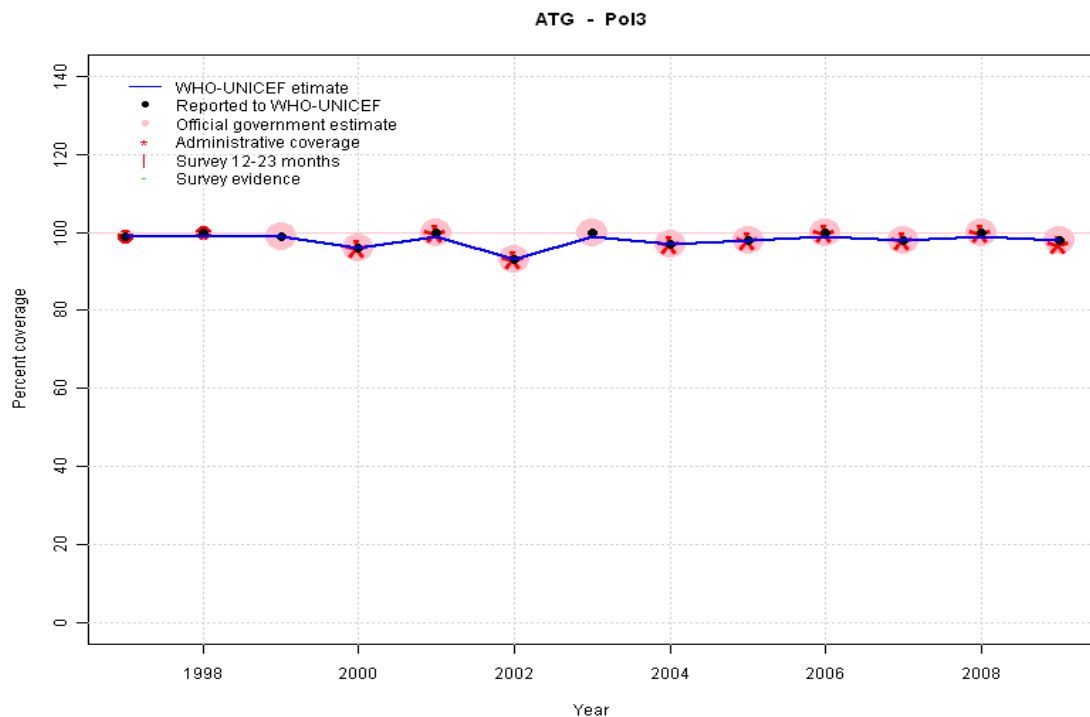


- 1997: Legacy estimate.
- 1998: Estimate based on reported data.
- 1999: Estimate based on reported data.
- 2000: Estimate based on reported data.
- 2001: Estimate based on reported data.
- 2002: Estimate based on reported data.
- 2003: Estimate based on reported data.
- 2004: Estimate based on reported data.
- 2005: Estimate based on reported data.
- 2006: Estimate based on reported data.
- 2007: Estimate based on reported data.
- 2008: Estimate based on trend in reported data. Missing or ignored reported value estimated by interpolation between reported values of 99 percent in 2007 and 99 percent in 2009. 2008 reported data (102 percent) ignored; greater than 100 percent.
- 2009: Estimate based on reported data.

	1997	1998	1999	2000	2001	2002	2003	2004	2005	2006	2007	2008	2009
Estimate	99	99	99	95	97	98	99	97	99	99	99	99	99
Reported	99	100	99	95	97	98	100	97	99	100	99	102	99
Official	NA	NA	99	95	97	98	100	97	99	100	99	102	99
Administrative	NA	NA	NA	95	97	98	100	97	99	100	99	102	94
Survey	NA	NA	NA	NA	NA	NA	NA	NA	NA	NA	NA	NA	NA

Antigua and Barbuda - Pol3

Description:

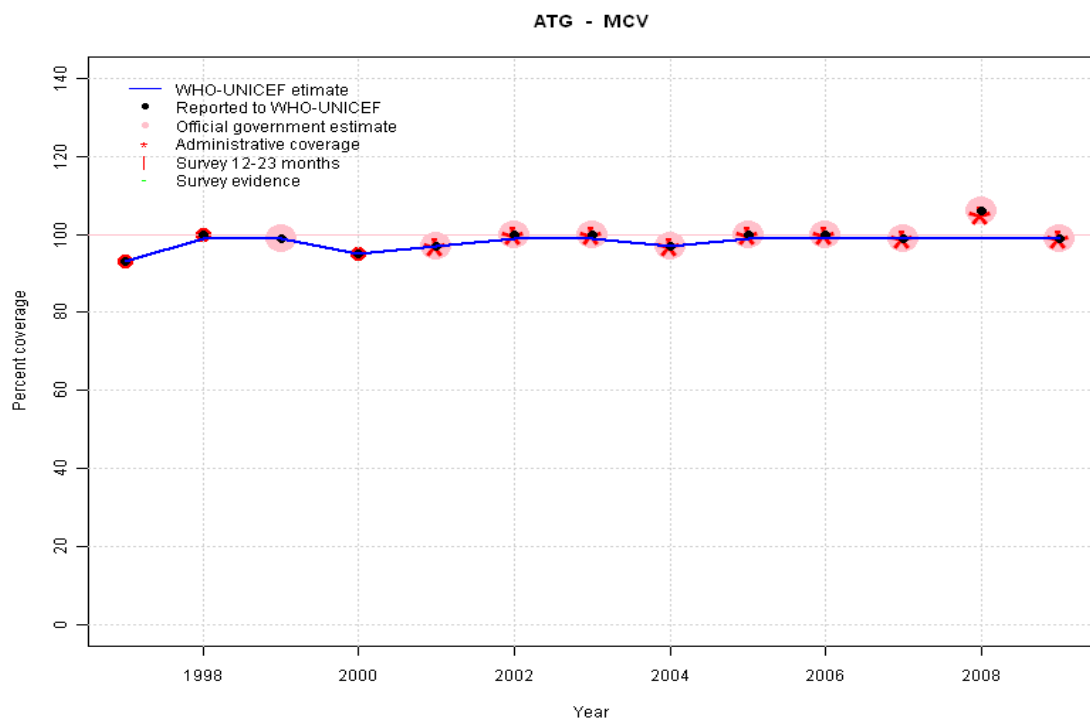


1997: Legacy estimate.
 1998: Estimate based on reported data.
 1999: Estimate based on reported data.
 2000: Estimate based on reported data.
 2001: Estimate based on reported data.
 2002: Estimate based on reported data.
 2003: Estimate based on reported data.
 2004: Estimate based on reported data.
 2005: Estimate based on reported data.
 2006: Estimate based on reported data.
 2007: Estimate based on reported data.
 2008: Estimate based on reported data.
 2009: Estimate based on reported data.

	1997	1998	1999	2000	2001	2002	2003	2004	2005	2006	2007	2008	2009
Estimate	99	99	99	96	99	93	99	97	98	99	98	99	98
Reported	99	100	99	96	100	93	100	97	98	100	98	100	98
Official	NA	NA	99	96	100	93	100	97	98	100	98	100	98
Administrative	NA	NA	NA	96	100	93	NA	97	98	100	98	100	97
Survey	NA	NA	NA	NA	NA	NA	NA	NA	NA	NA	NA	NA	NA

Antigua and Barbuda - MCV

Description:

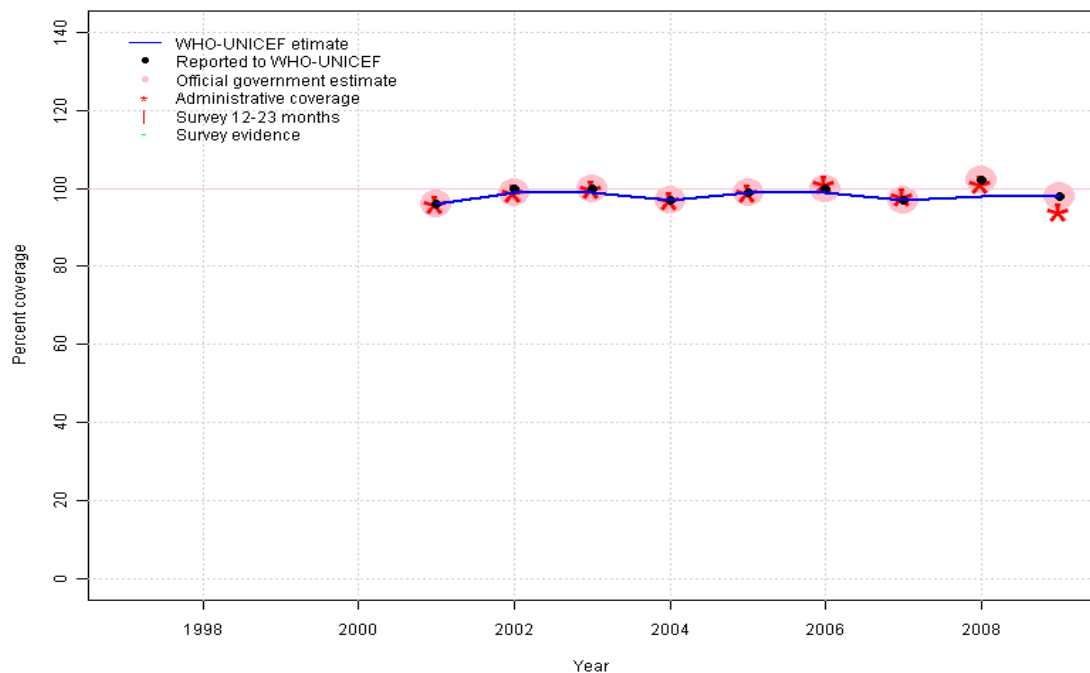


- 1997: Legacy estimate.
- 1998: Estimate based on reported data.
- 1999: Estimate based on reported data.
- 2000: Estimate based on reported data.
- 2001: Estimate based on reported data.
- 2002: Estimate based on reported data.
- 2003: Estimate based on reported data.
- 2004: Estimate based on reported data.
- 2005: Estimate based on reported data.
- 2006: Estimate based on reported data.
- 2007: Estimate based on reported data.
- 2008: Estimate based on trend in reported data. Missing or ignored reported value estimated by interpolation between reported values of 99 percent in 2007 and 99 percent in 2009. 2008 reported data (106 percent) ignored; greater than 100 percent.
- 2009: Estimate based on reported data.

	1997	1998	1999	2000	2001	2002	2003	2004	2005	2006	2007	2008	2009
Estimate	93	99	99	95	97	99	99	97	99	99	99	99	99
Reported	93	100	99	95	97	100	100	97	100	100	99	106	99
Official	NA	NA	99	NA	97	100	100	97	100	100	99	106	99
Administrative	NA	NA	NA	NA	97	100	100	97	100	100	99	105	99
Survey	NA	NA	NA	NA	NA	NA	NA	NA	NA	NA	NA	NA	NA

Antigua and Barbuda - HepB3

ATG - HepB3



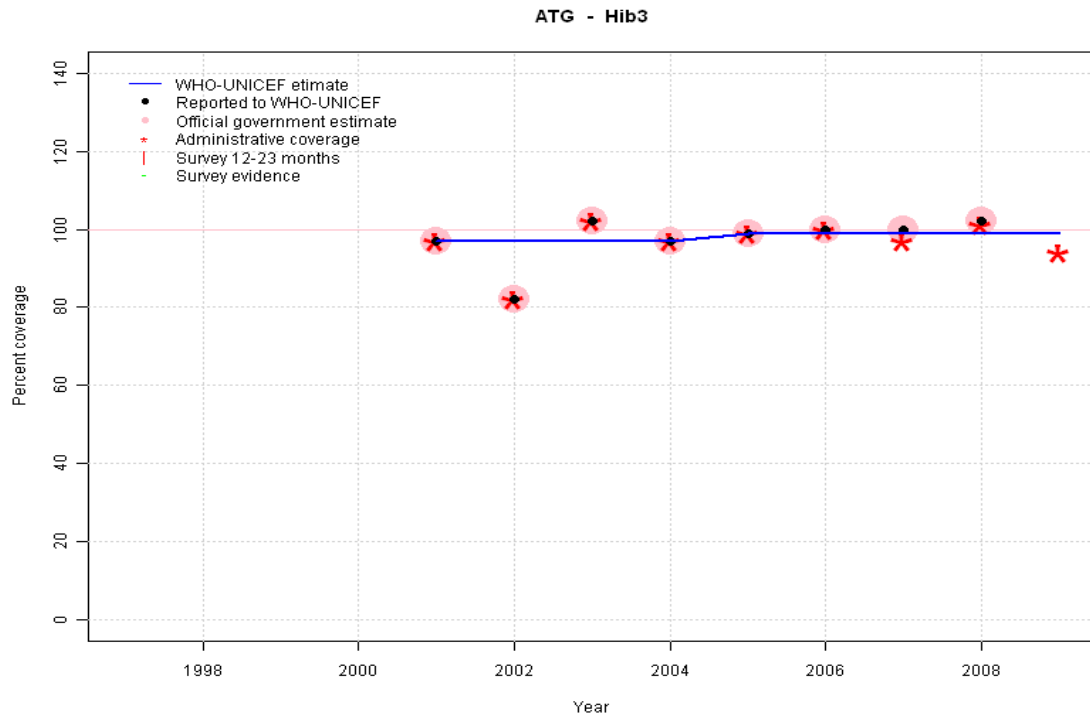
Description:

- 2001: Estimate based on reported data. HepB introduced in 1999. Reporting started in 2001.
- 2002: Estimate based on reported data.
- 2003: Estimate based on reported data.
- 2004: Estimate based on reported data.
- 2005: Estimate based on reported data.
- 2006: Estimate based on reported data.
- 2007: Estimate based on reported data.
- 2008: Estimate based on reported data. Missing or ignored reported value estimated by interpolation between reported values of 97 percent in 2007 and 98 percent in 2009. 2008 reported data (102 percent) ignored; greater than 100 percent.
- 2009: Estimate based on reported data.

	1997	1998	1999	2000	2001	2002	2003	2004	2005	2006	2007	2008	2009
Estimate	NA	NA	NA	NA	96	99	99	97	99	99	97	98	98
Reported	NA	NA	NA	NA	96	100	100	97	99	100	97	102	98
Official	NA	NA	NA	NA	96	99	100	97	99	100	97	102	98
Administrative	NA	NA	NA	NA	96	99	100	97	99	101	98	101	94
Survey	NA	NA	NA	NA	NA	NA	NA	NA	NA	NA	NA	NA	NA

Antigua and Barbuda - Hib3

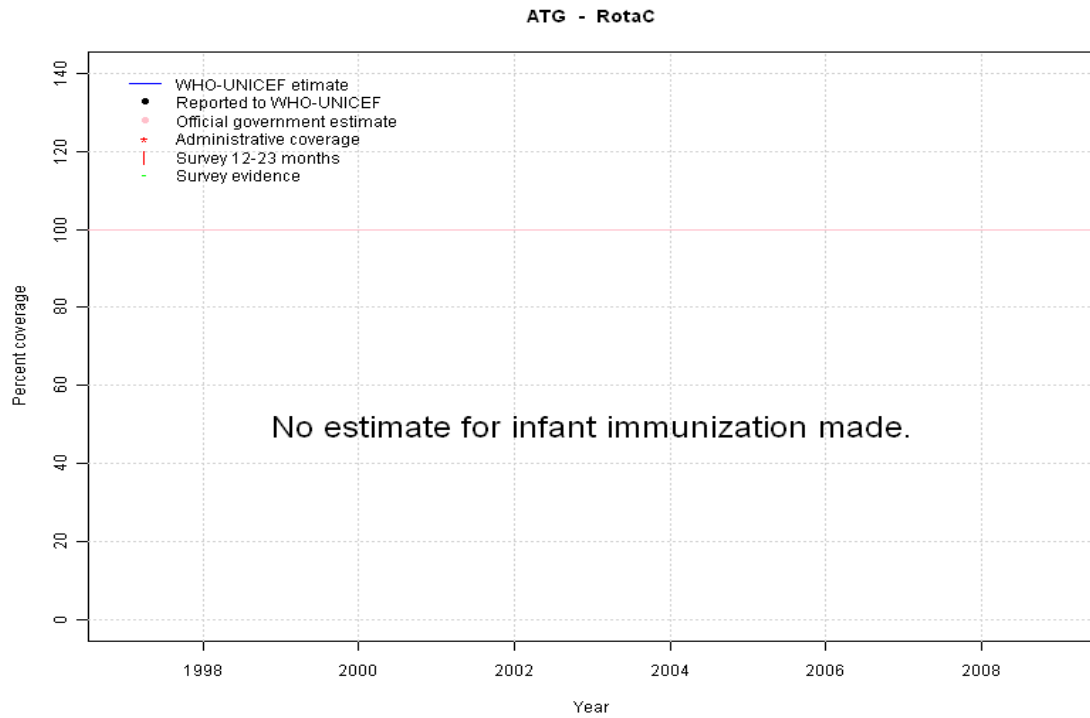
Description:



- 2001: Estimate based on reported data. Hib introduced in 2000. Reporting started in 2001. Vaccine presentation is DTP-HepB-Hib.
- 2002: Estimate based on reported data. Missing or ignored reported value estimated by interpolation between reported values of 97 percent in 2001 and 97 percent in 2004. 2002 reported data (82 percent) inconsistent with data from other years.
- 2003: Estimate based on reported data. Missing or ignored reported value estimated by interpolation between reported values of 97 percent in 2001 and 97 percent in 2004. 2003 reported data (102 percent) ignored; greater than 100 percent.
- 2004: Estimate based on reported data.
- 2005: Estimate based on reported data.
- 2006: Estimate based on reported data.
- 2007: Estimate based on reported data.
- 2008: Estimate based on reported data. Missing or ignored reported value estimated by extrapolation from 2007 reported value of 99 percent. 2008 reported data (102 percent) ignored; greater than 100 percent.
- 2009: Estimate based on reported data. Missing or ignored reported value estimated by extrapolation from 2007 reported value of 99 percent.

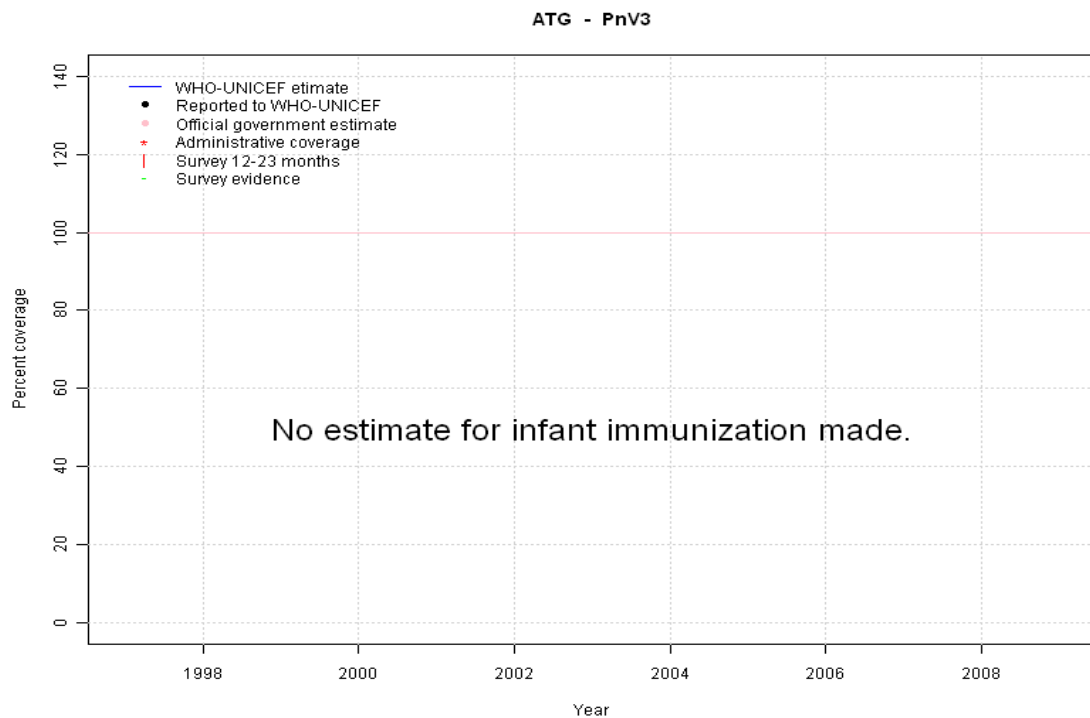
	1997	1998	1999	2000	2001	2002	2003	2004	2005	2006	2007	2008	2009
Estimate	NA	NA	NA	NA	97	97	97	97	99	99	99	99	99
Reported	NA	NA	NA	NA	97	82	102	97	99	100	100	102	NA
Official	NA	NA	NA	NA	97	82	102	97	99	100	100	102	NA
Administrative	NA	NA	NA	NA	97	82	102	97	99	100	97	101	94
Survey	NA	NA	NA	NA	NA	NA	NA	NA	NA	NA	NA	NA	NA

Antigua and Barbuda - RotaC



	1997	1998	1999	2000	2001	2002	2003	2004	2005	2006	2007	2008	2009
Estimate	NA	NA	NA	NA	NA	NA	NA	NA	NA	NA	NA	NA	NA
Reported	NA	NA	NA	NA	NA	NA	NA	NA	NA	NA	NA	NA	NA
Official	NA	NA	NA	NA	NA	NA	NA	NA	NA	NA	NA	NA	NA
Administrative	NA	NA	NA	NA	NA	NA	NA	NA	NA	NA	NA	NA	NA
Survey	NA	NA	NA	NA	NA	NA	NA	NA	NA	NA	NA	NA	NA

Antigua and Barbuda - PnV3



	1997	1998	1999	2000	2001	2002	2003	2004	2005	2006	2007	2008	2009
Estimate	NA	NA	NA	NA	NA	NA	NA	NA	NA	NA	NA	NA	NA
Reported	NA	NA	NA	NA	NA	NA	NA	NA	NA	NA	NA	NA	NA
Official	NA	NA	NA	NA	NA	NA	NA	NA	NA	NA	NA	NA	NA
Administrative	NA	NA	NA	NA	NA	NA	NA	NA	NA	NA	NA	NA	NA
Survey	NA	NA	NA	NA	NA	NA	NA	NA	NA	NA	NA	NA	NA

Further information and estimates for 1980-1996 are available at:

http://www.childinfo.org/immunization_countryreports.html

http://www.who.int/immunization_monitoring/routine/immunization_coverage/en/index4.html