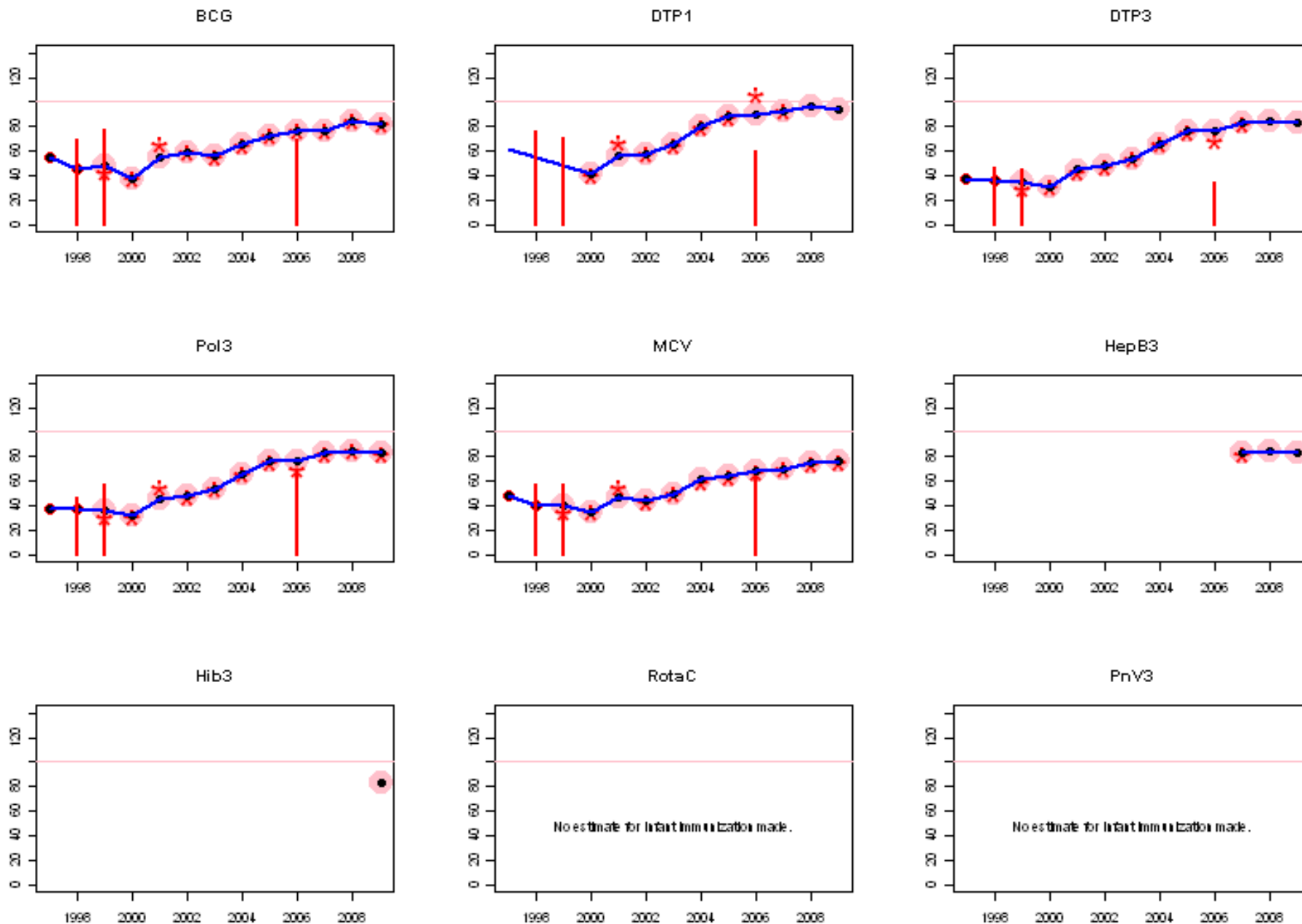
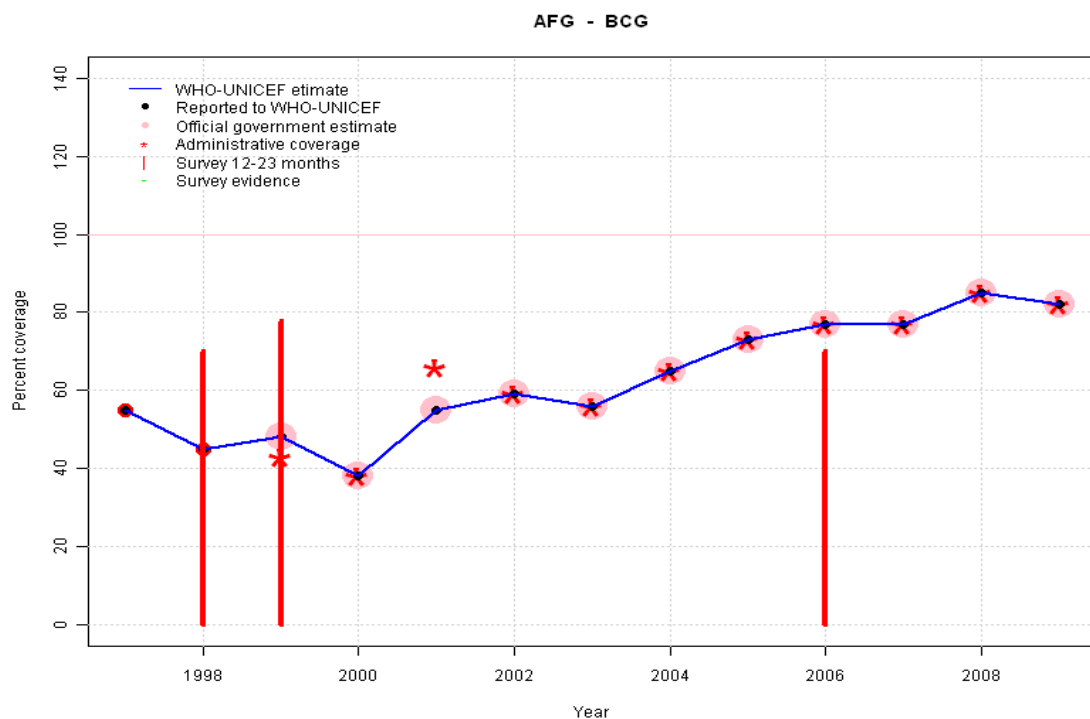


# Afghanistan: WHO and UNICEF estimates of immunization coverage, 1997 - 2009



# Afghanistan - BCG

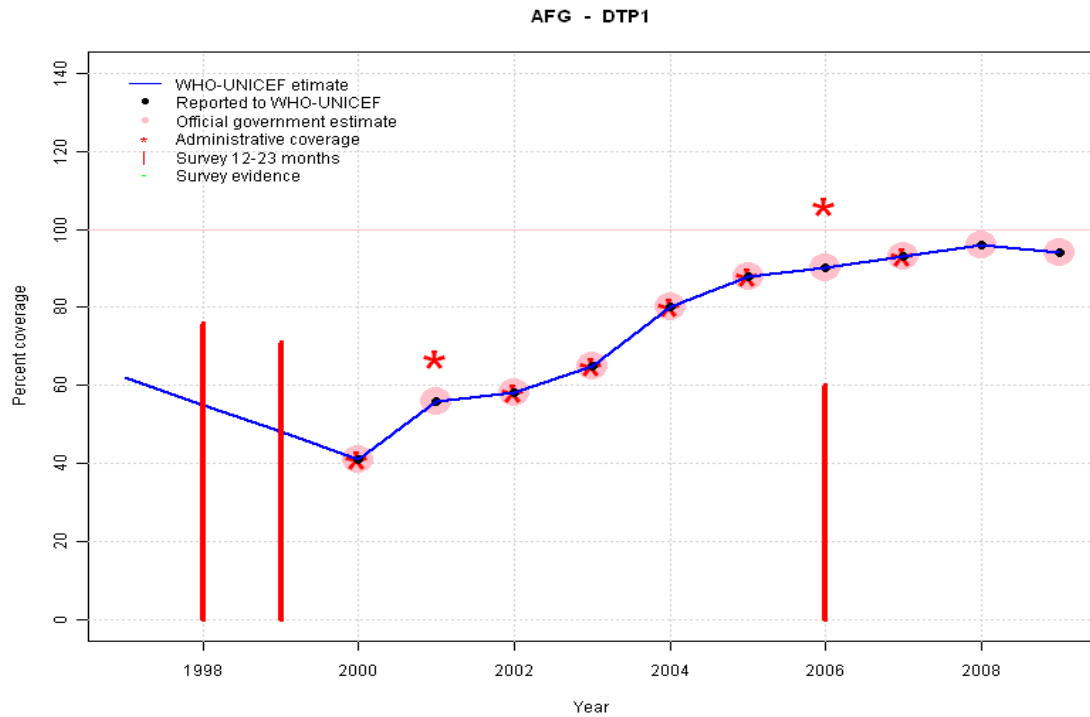


## Description:

- 1997: Legacy estimate.
- 1998: Estimate based on reported data. Survey results of 70 percent ignored by working group. Survey includes immunizations given during national immunization days.
- 1999: Estimate based on reported data. Survey results of 78 percent with sample size 223 ignored; sample size less than 300. Survey results of 78 percent ignored by working group. Survey includes immunizations given during national immunization days.
- 2000: Estimate based on reported data. Data reflects unstable situation in the country.
- 2001: Estimate based on reported data.
- 2002: Estimate based on reported data.
- 2003: Estimate based on reported data.
- 2004: Estimate based on reported data.
- 2005: Estimate based on reported data.
- 2006: Estimate based on reported data. Survey results of 70 percent ignored by working group. Survey does not include 5 provinces and card retention was 17 percent.
- 2007: Estimate based on reported data.
- 2008: Estimate based on reported data.
- 2009: Estimate based on reported data.

	1997	1998	1999	2000	2001	2002	2003	2004	2005	2006	2007	2008	2009
Estimate	55	45	48	38	55	59	56	65	73	77	77	85	82
Reported	55	45	48	38	55	59	56	65	73	77	77	85	82
Official	NA	NA	48	38	55	59	56	65	73	77	77	85	82
Administrative	NA	NA	43	38	66	59	56	65	73	77	77	85	82
Survey	NA	NA	NA	NA	NA	NA	NA	NA	NA	NA	NA	NA	NA

# Afghanistan - DTP1



## Description:

1997: Legacy estimate.

1998: Estimate interpolated between 1997 and 2000 estimates. Survey results of 76 percent ignored by working group. Survey includes immunizations given during national immunization days.

1999: Estimate interpolated between 1997 and 2000 estimates. Survey results of 71 percent with sample size 223 ignored; sample size less than 300. Survey results of 71 percent ignored by working group. Survey includes immunizations given during national immunization days.

2000: Survey data not taken. Estimates based on reported data.

2001: Estimate based on reported data.

2002: Estimate based on reported data.

2003: Estimate based on reported data.

2004: Estimate based on reported data.

2005: Estimate based on reported data.

2006: Estimate based on reported data. Survey results of 60 percent ignored by working group. Survey does not include 5 provinces and card retention was 17 percent.

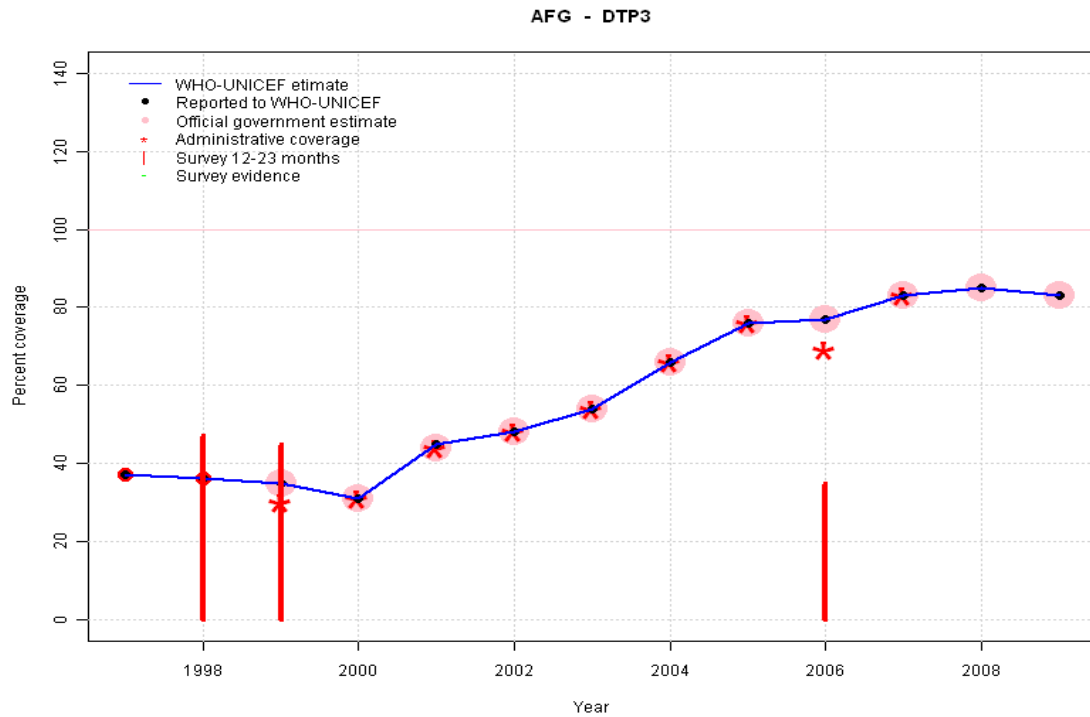
2007: Estimate based on reported data.

2008: Estimate based on reported data.

2009: Estimate based on reported data.

	1997	1998	1999	2000	2001	2002	2003	2004	2005	2006	2007	2008	2009
Estimate	62	55	48	41	56	58	65	80	88	90	93	96	94
Reported	NA	NA	NA	41	56	58	65	80	88	90	93	96	94
Official	NA	NA	NA	41	56	58	65	80	88	90	93	96	94
Administrative	NA	NA	NA	41	67	58	65	80	88	106	93	NA	NA
Survey	NA	NA	NA	NA	NA	NA	NA	NA	NA	NA	NA	NA	NA

# Afghanistan - DTP3



## Description:

1997: Legacy estimate.

1998: Estimate based on reported data. Survey results of 47 percent ignored by working group. Survey includes immunizations given during national immunization days.

1999: Estimate based on reported data. Survey results of 45 percent with sample size 223 ignored; sample size less than 300. Survey results of 45 percent ignored by working group. Survey includes immunizations given during national immunization days.

2000: Estimate based on reported data.

2001: Estimate based on reported data.

2002: Estimate based on reported data.

2003: Estimate based on reported data.

2004: Estimate based on reported data.

2005: Estimate based on reported data.

2006: Estimate based on reported data. Survey results of 35 percent ignored by working group. Survey does not include 5 provinces and card retention was 17 percent.

2007: Estimate based on reported data.

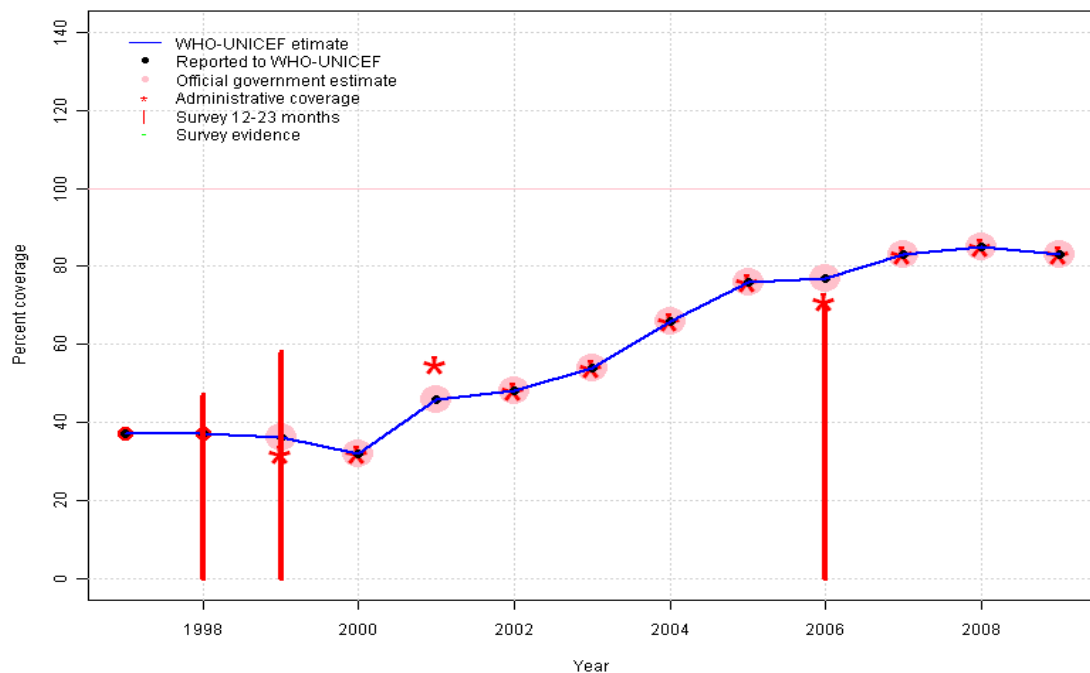
2008: Estimate based on reported data.

2009: Estimate based on reported data.

	1997	1998	1999	2000	2001	2002	2003	2004	2005	2006	2007	2008	2009
Estimate	37	36	35	31	45	48	54	66	76	77	83	85	83
Reported	37	36	35	31	45	48	54	66	76	77	83	85	83
Official	NA	NA	35	31	44	48	54	66	76	77	83	85	83
Administrative	NA	NA	30	31	44	48	54	66	76	69	83	NA	NA
Survey	NA	NA	NA	NA	NA	NA	NA	NA	NA	NA	NA	NA	NA

# Afghanistan - Pol3

AFG - Pol3



## Description:

1997: Legacy estimate.

1998: Estimate based on reported data. Survey results of 47 percent ignored by working group. Survey includes immunizations given during national immunization days.

1999: Estimate based on reported data. Survey results of 58 percent with sample size 223 ignored; sample size less than 300. Survey results of 58 percent ignored by working group. Survey includes immunizations given during national immunization days.

2000: Estimate based on reported data.

2001: Estimate based on reported data.

2002: Estimate based on reported data.

2003: Estimate based on reported data.

2004: Estimate based on reported data.

2005: Estimate based on reported data.

2006: Estimate based on reported data. Survey results of 70 percent ignored by working group. Survey does not include 5 provinces and card retention was 17 percent.

2007: Estimate based on reported data.

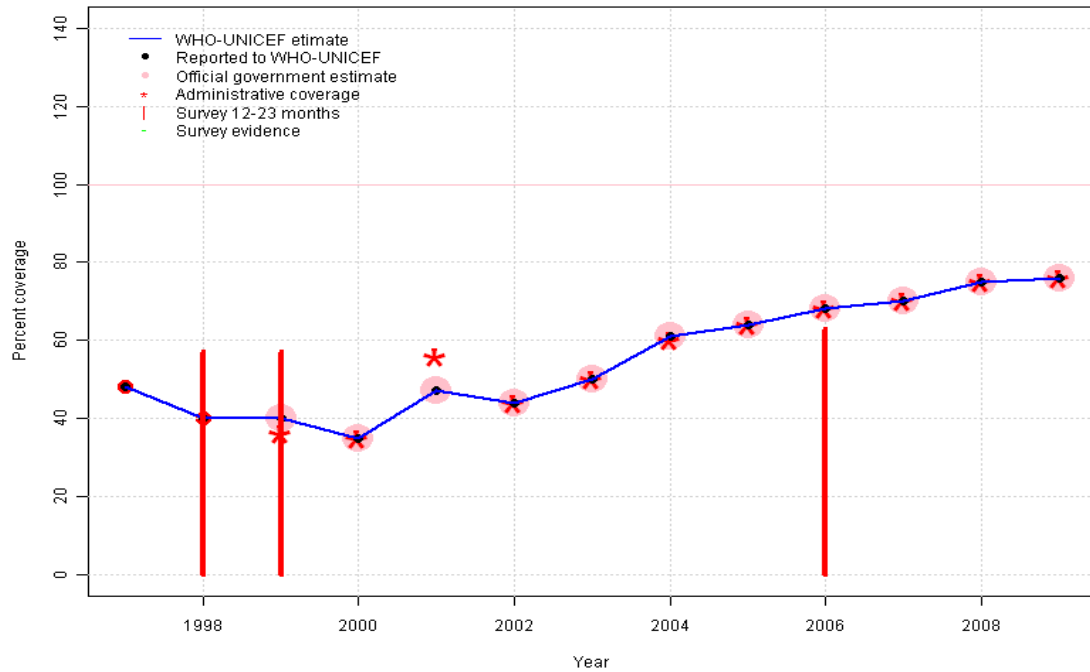
2008: Estimate based on reported data.

2009: Estimate based on reported data.

	1997	1998	1999	2000	2001	2002	2003	2004	2005	2006	2007	2008	2009
Estimate	37	37	36	32	46	48	54	66	76	77	83	85	83
Reported	37	37	36	32	46	48	54	66	76	77	83	85	83
Official	NA	NA	36	32	46	48	54	66	76	77	83	85	83
Administrative	NA	NA	32	32	55	48	54	66	76	71	83	85	83
Survey	NA	NA	NA	NA	NA	NA	NA	NA	NA	NA	NA	NA	NA

# Afghanistan - MCV

AFG - MCV



	1997	1998	1999	2000	2001	2002	2003	2004	2005	2006	2007	2008	2009
Estimate	48	40	40	35	47	44	50	61	64	68	70	75	76
Reported	48	40	40	35	47	44	50	61	64	68	70	75	76
Official	NA	NA	40	35	47	44	50	61	64	68	70	75	76
Administrative	NA	NA	36	35	56	44	50	60	64	68	70	75	76
Survey	NA	NA	NA	NA	NA	NA	NA	NA	NA	NA	NA	NA	NA

## Description:

1997: Legacy estimate.

1998: Estimate based on reported data. Survey results of 57 percent ignored by working group. Survey includes immunizations given during national immunization days.

1999: Estimate based on reported data. Survey results of 57 percent with sample size 223 ignored; sample size less than 300. Survey results of 57 percent ignored by working group. Survey includes immunizations given during national immunization days.

2000: Estimate based on reported data.

2001: Estimate based on reported data.

2002: Estimate based on reported data.

2003: Estimate based on reported data.

2004: Estimate based on reported data.

2005: Estimate based on reported data.

2006: Estimate based on reported data. Survey results of 63 percent ignored by working group. Survey does not include 5 provinces and card retention was 17 percent.

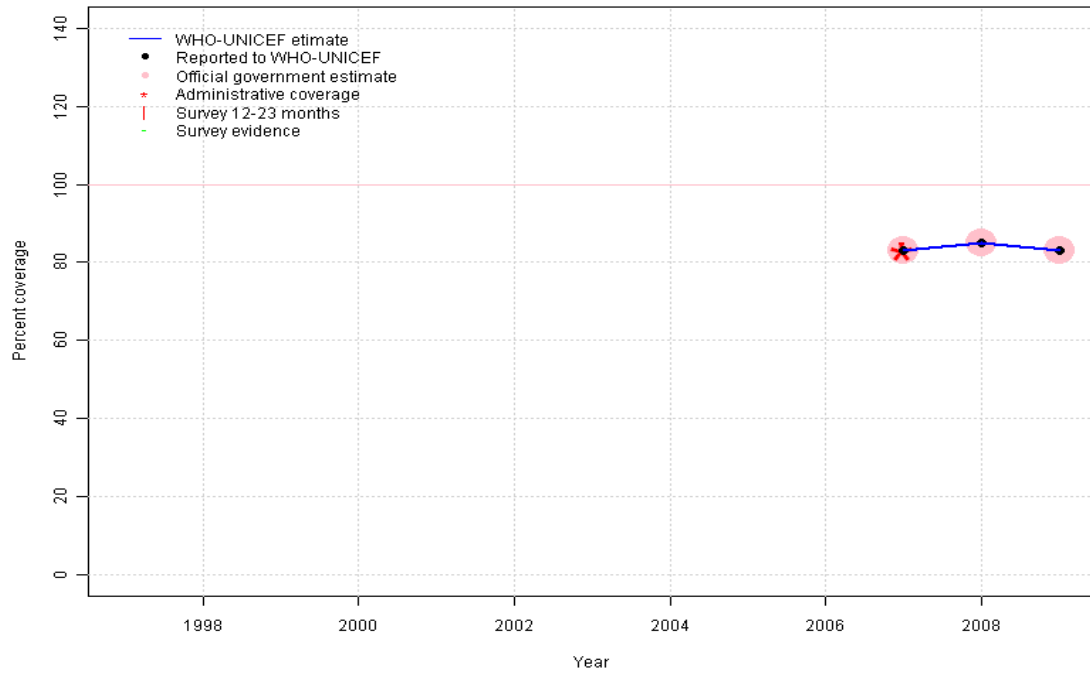
2007: Estimate based on reported data.

2008: Estimate based on reported data.

2009: Estimate based on reported data.

# Afghanistan - HepB3

AFG - HepB3



## Description:

2007: Estimate based on reported data. HepB introduced in 2006. Reporting started in 2007.

2008: Estimate based on reported data.

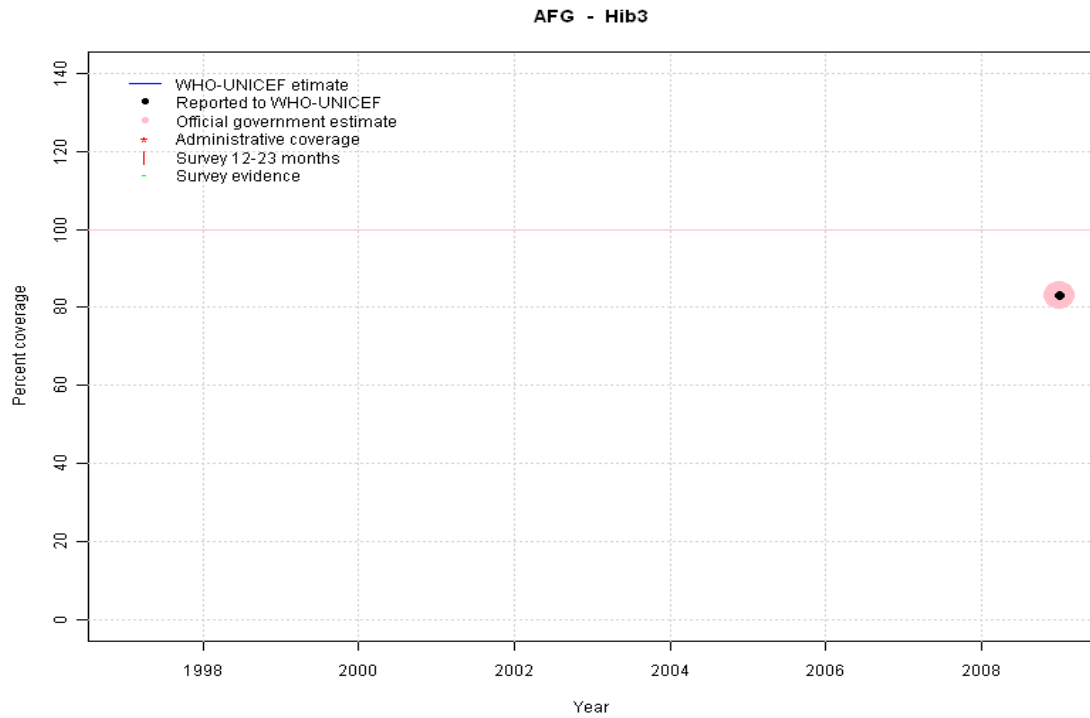
2009: Estimate based on reported data.

	1997	1998	1999	2000	2001	2002	2003	2004	2005	2006	2007	2008	2009
Estimate	NA	NA	NA	NA	NA	NA	NA	NA	NA	NA	83	85	83
Reported	NA	NA	NA	NA	NA	NA	NA	NA	NA	NA	83	85	83
Official	NA	NA	NA	NA	NA	NA	NA	NA	NA	NA	83	85	83
Administrative	NA	NA	NA	NA	NA	NA	NA	NA	NA	NA	83	NA	NA
Survey	NA	NA	NA	NA	NA	NA	NA	NA	NA	NA	NA	NA	NA

# Afghanistan - Hib3

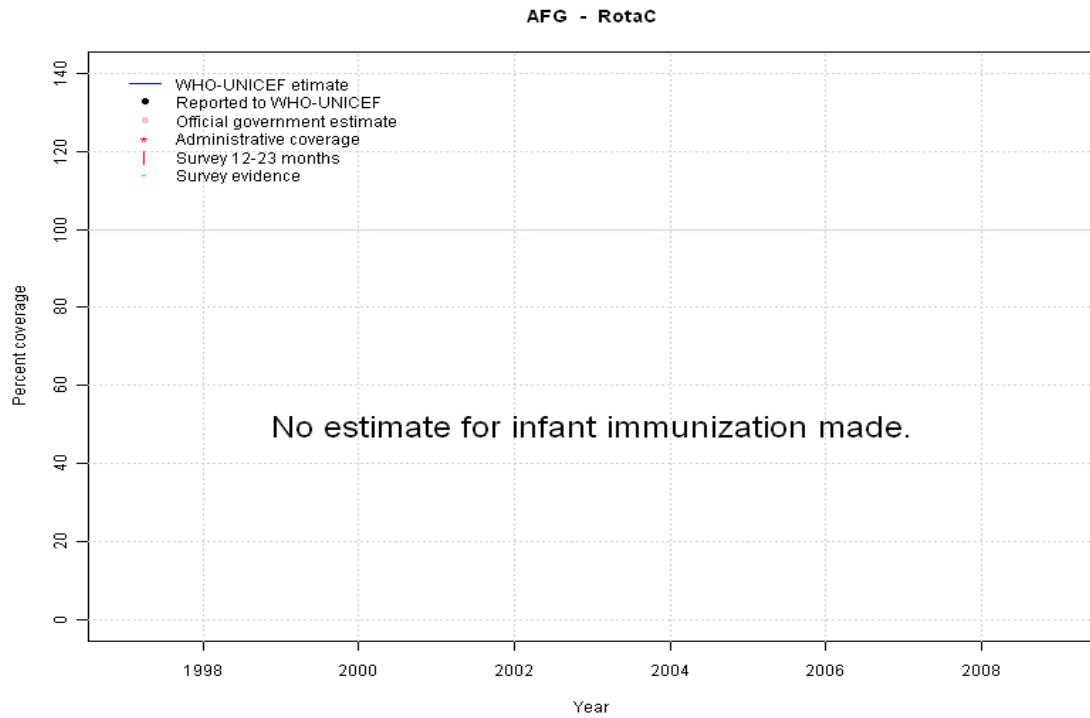
## Description:

2009: Estimate based on reported data. Hib introduced in 2009 Vaccine presentation is DTP-HepB-Hib.



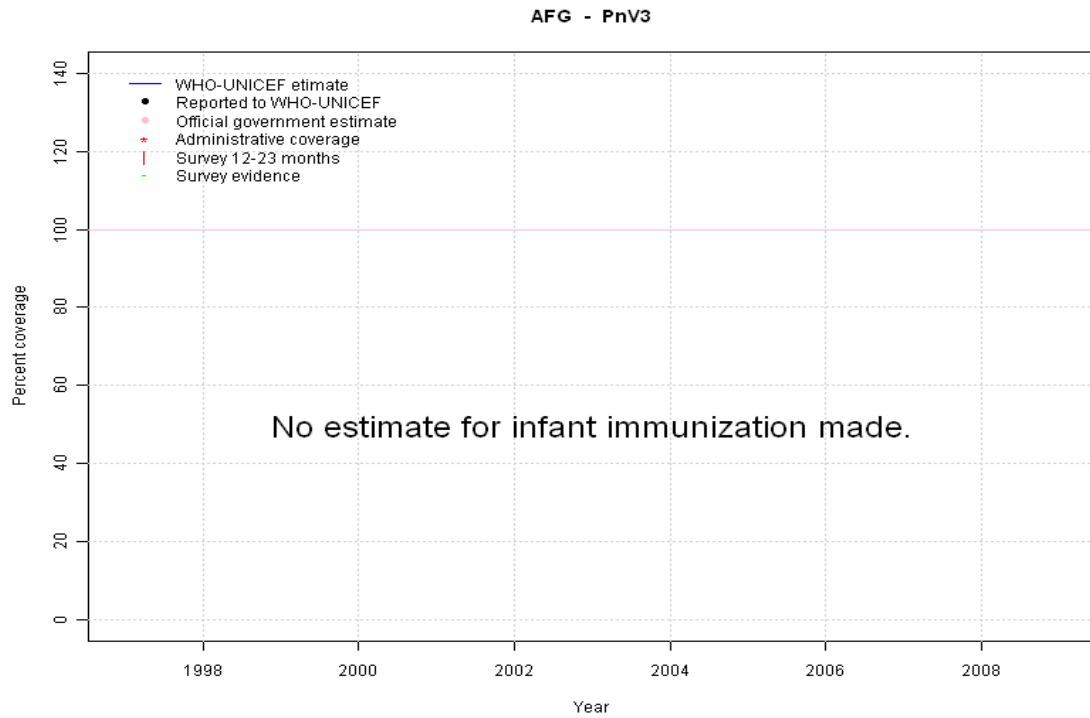
	1997	1998	1999	2000	2001	2002	2003	2004	2005	2006	2007	2008	2009
Estimate	NA	NA	NA	NA	NA	NA	NA	NA	NA	NA	NA	NA	83
Reported	NA	NA	NA	NA	NA	NA	NA	NA	NA	NA	NA	NA	83
Official	NA	NA	NA	NA	NA	NA	NA	NA	NA	NA	NA	NA	83
Administrative	NA	NA	NA	NA	NA	NA	NA	NA	NA	NA	NA	NA	NA
Survey	NA	NA	NA	NA	NA	NA	NA	NA	NA	NA	NA	NA	NA

# Afghanistan - RotaC



	1997	1998	1999	2000	2001	2002	2003	2004	2005	2006	2007	2008	2009
Estimate	NA	NA	NA	NA	NA	NA	NA	NA	NA	NA	NA	NA	NA
Reported	NA	NA	NA	NA	NA	NA	NA	NA	NA	NA	NA	NA	NA
Official	NA	NA	NA	NA	NA	NA	NA	NA	NA	NA	NA	NA	NA
Administrative	NA	NA	NA	NA	NA	NA	NA	NA	NA	NA	NA	NA	NA
Survey	NA	NA	NA	NA	NA	NA	NA	NA	NA	NA	NA	NA	NA

# Afghanistan - PnV3



	1997	1998	1999	2000	2001	2002	2003	2004	2005	2006	2007	2008	2009
Estimate	NA	NA	NA	NA	NA	NA	NA	NA	NA	NA	NA	NA	NA
Reported	NA	NA	NA	NA	NA	NA	NA	NA	NA	NA	NA	NA	NA
Official	NA	NA	NA	NA	NA	NA	NA	NA	NA	NA	NA	NA	NA
Administrative	NA	NA	NA	NA	NA	NA	NA	NA	NA	NA	NA	NA	NA
Survey	NA	NA	NA	NA	NA	NA	NA	NA	NA	NA	NA	NA	NA

# Afghanistan - survey details

## 2006 Afghanistan Health Survey 2006

Vaccine	Confirmation method	Coverage	Age cohort	Sample	Cards seen
BCG	Card or History	70	12-23 m	1665	17
DTP1	Card or History	60	12-23 m	1665	17
DTP3	Card or History	35	12-23 m	1665	17
MCV	Card or History	63	12-23 m	1665	17
Pol3	Card or History	70	12-23 m	1665	17

## 2002 Moving Beyond 2 decades of war: Progress of Provinces

Vaccine	Confirmation method	Coverage	Age cohort	Sample	Cards seen
DTP3	n.a.	30	12-23 m	0	61
Pol3	n.a.	51	12-23 m	0	61

## 1999 Afghanistan Multiple Indicator Cluster Survey, 2000, East of Afghanistan

Vaccine	Confirmation method	Coverage	Age cohort	Sample	Cards seen
BCG	Card or History	78	12-23 m	223	0
DTP1	Card or History	71	12-23 m	223	0
DTP3	Card or History	45	12-23 m	223	0
MCV	Card or History	57	12-23 m	223	0
Pol1	Card or History	88	12-23 m	223	0

Pol3 Card or History 58 12-23 m 223 0

## 1998 EPI Coverage Situation in Women and Children of Afghanistan, Report of Post NID's, Routine Coverage and Acceleration Campaign Survey in Afghanistan (1999)

Vaccine	Confirmation method	Coverage	Age cohort	Sample	Cards seen
BCG	Card	40	12-23 m	1681	48
BCG	Card or History	70	12-23 m	1681	48
BCG	History	30	12-23 m	1681	48
DTP1	Card or History	76	12-23 m	1681	48
DTP1	History	29	12-23 m	1681	48
DTP1	Card	46	12-23 m	1681	48
DTP3	History	20	12-23 m	1681	48
DTP3	Card	27	12-23 m	1681	48
DTP3	Card or History	47	12-23 m	1681	48
MCV	History	20	12-23 m	1681	48
MCV	Card or History	57	12-23 m	1681	48
MCV	Card	37	12-23 m	1681	48
Pol1	History	29	12-23 m	1681	48
Pol1	Card or History	76	12-23 m	1681	48
Pol1	Card	46	12-23 m	1681	48
Pol3	Card or History	47	12-23 m	1681	48
Pol3	History	20	12-23 m	1681	48
Pol3	Card	27	12-23 m	1681	48

Further information and estimates for 1980-1996 are available at:

[http://www.childinfo.org/immunization\\_countryreports.html](http://www.childinfo.org/immunization_countryreports.html)

[http://www.who.int/immunization\\_monitoring/routine/immunization\\_coverage/en/index4.html](http://www.who.int/immunization_monitoring/routine/immunization_coverage/en/index4.html)

## Afghanistan

### WHO/UNICEF Estimates of Protection at Birth (PAB) against tetanus

In countries where tetanus is recommended for girls and women coverage is usually reported as "TT2+", i.e. the proportion of (pregnant) women who have received their second or superior TT dose in a given year. TT2 + coverage, however, can under-represent the actual proportion of births that are protected against tetanus as it does not include women who have previously received protective doses, women who received one dose without documentation of previous doses, and women who received doses in TT (or Td) supplemental immunization activities (SIA). In addition, girls who have received DTP in their childhood and are entering childbearing age, may be protected with TT booster doses.

WHO and UNICEF have developed a model that takes into account the above scenarios, and calculates the proportion of births in a given year that can be considered as having been protected against tetanus - "Protection at Birth".

In this model, annual cohorts of women are followed from infancy through their life. A proportion receive DTP in infancy (estimated based on the WHO-UNICEF estimates of DTP3 coverage). In addition some of these women also receive TT through routine services when they are pregnant and may also receive TT during SIAs. The model also adjusts reported data, taking into account coverage patterns in other years, and/or results available through surveys. The duration of protection is then calculated, based on WHO estimates of the duration of protection by doses ever received. The proportion of births that are protected against tetanus as a result of maternal immunization reflects the tetanus immunization received by the mother throughout her life rather than simply the TT immunizations received during the current pregnancy.

Year	PAB coverage estimate (%)
1997	19
1998	21
1999	28
2000	32
2001	47
2002	52
2003	62
2004	95
2005	96
2006	95
2007	84
2008	83
2009	89

---

<sup>1</sup> This model is described in: Griffiths U., Wolfson L., Quddus A., Younus M., Hafiz R.. Incremental cost-effectiveness of supplementary immunization activities to prevent neo-natal tetanus in Pakistan. Bulletin of the World Health Organization 2004; 82:643-651.